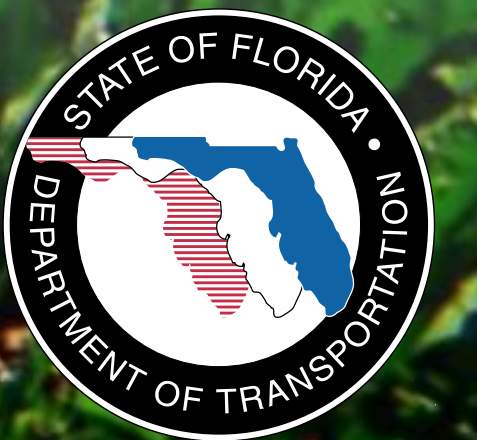




## A Regional Transportation Solution

Association of Eminent Domain  
Professionals  
Nov. 8, 2013

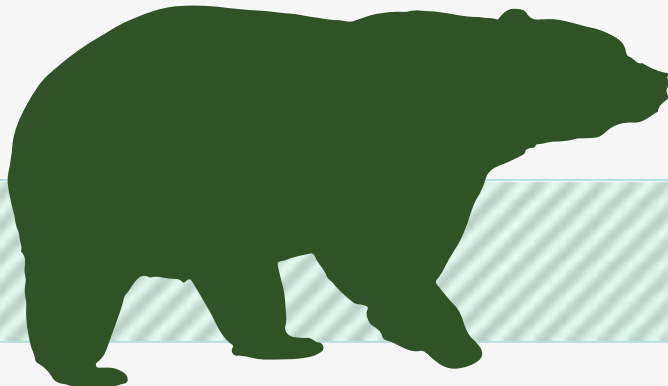
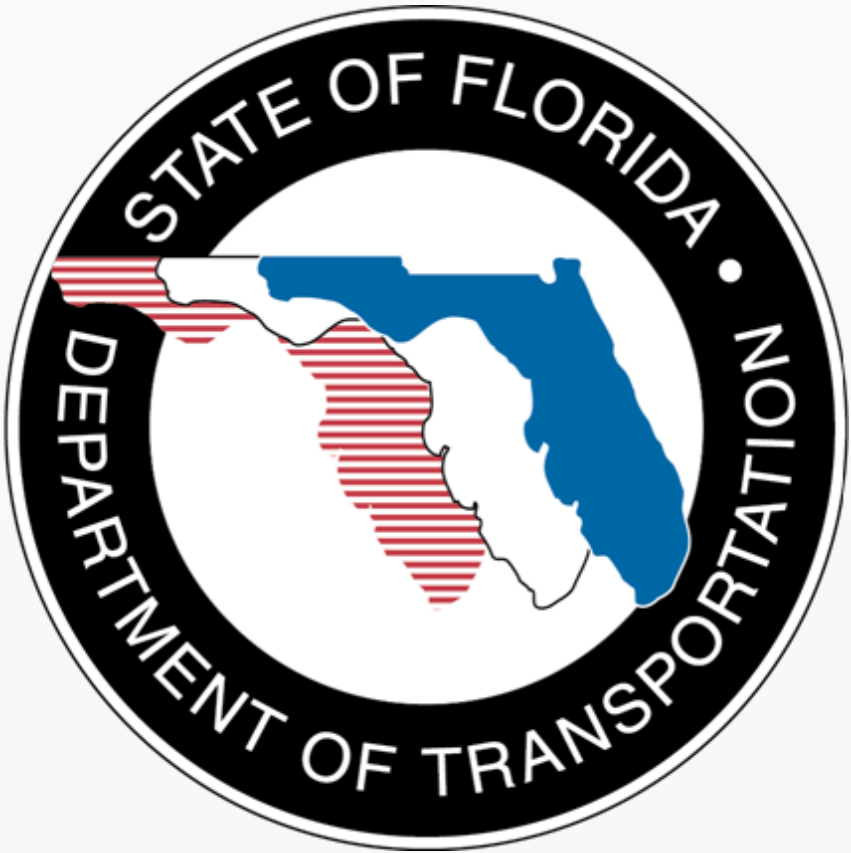




# CENTRAL FLORIDA LEGACY PROJECTS



# Funding Partners





# WEKIVA PARKWAY

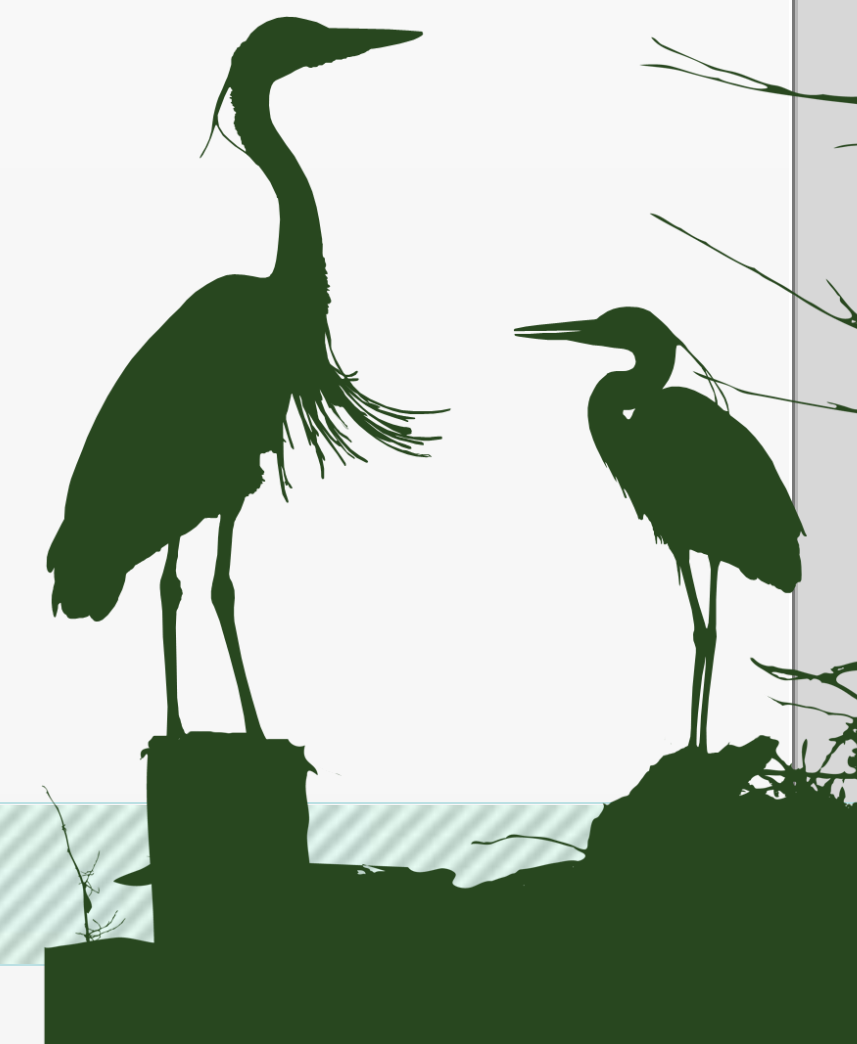


**WEKIVA PARKWAY**



# Project Description

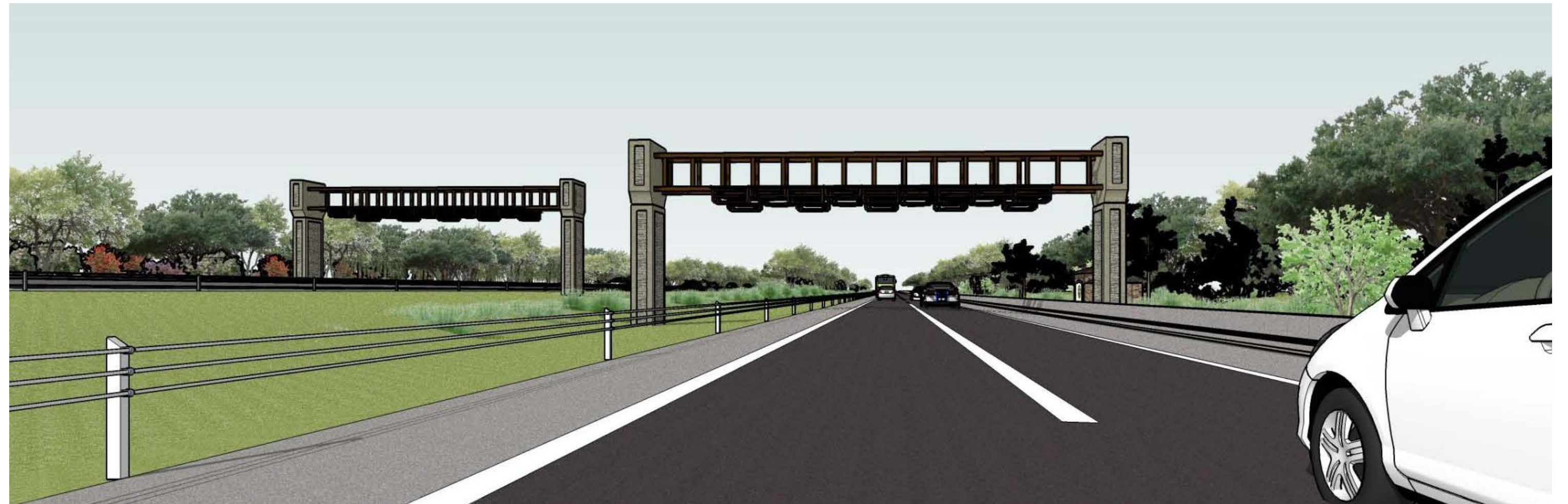
- **\$1.6 Billion Completion of Central Florida's Beltway**
- **25-mile Toll Road**
- **Non-Toll Road Improvements:**
  - **Widening SR 46 in Lake & Seminole Counties**
  - **Rebuilding the US 441/SR 46 Interchange in Mount Dora**
  - **Relocating CR 46A to Improve Wildlife Connectivity**
  - **Parallel Service Roads in East Lake & Seminole Counties**
- **Multi-use Trail (Portions of East Lake & Seminole Counties)**





# All Electronic Tolling (AET)

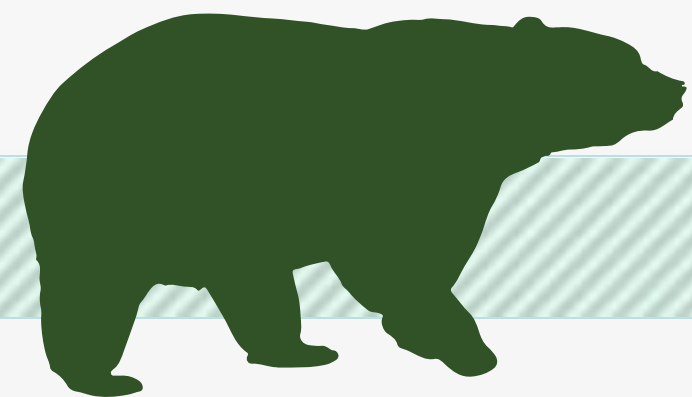
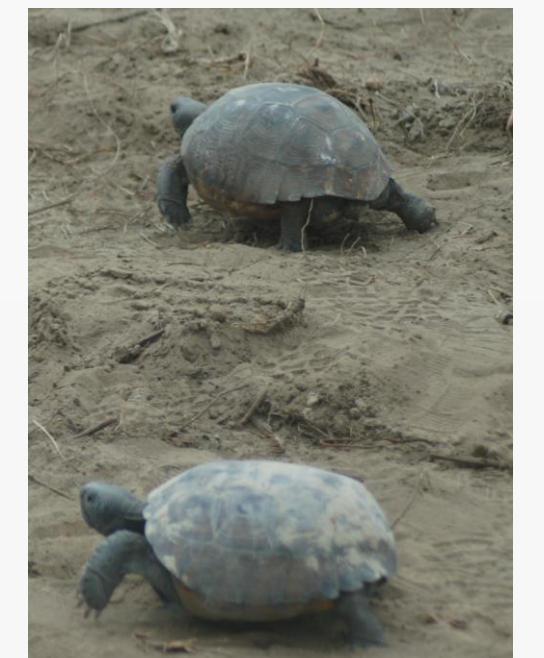
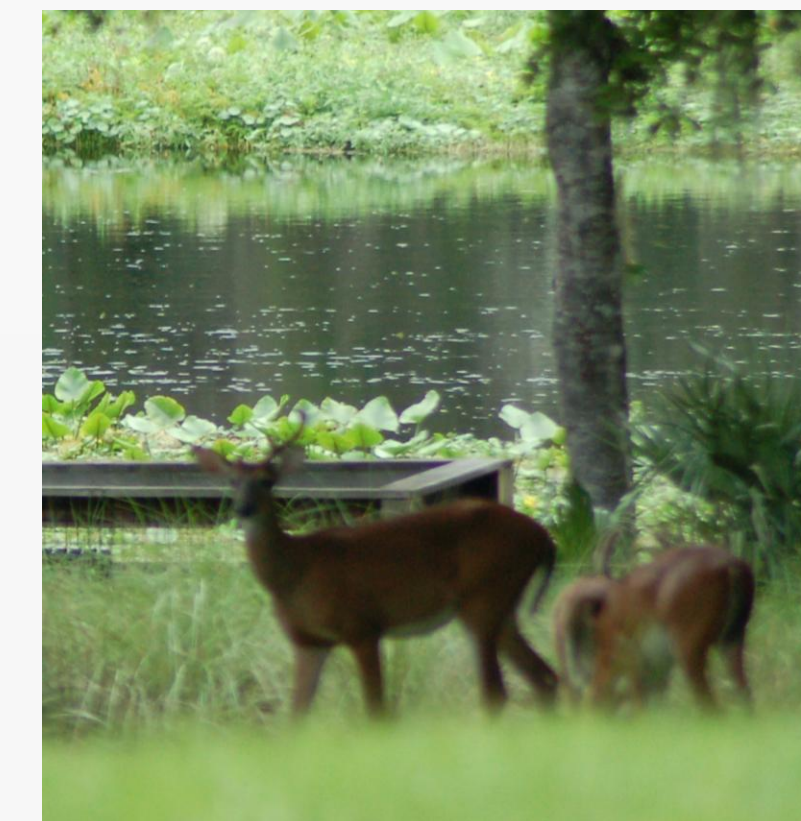
- First in Central Florida
- No Toll Plazas (SUNPass or E-Pass)
- Improved Traffic Flow Efficiency
- Enhanced Safety
- Reduced Noise
- Toll Costs Pending





## Protecting Nature

- **Wekiva River: Outstanding Florida Water & National Wild & Scenic River**
- **Authorized by the 2004 Wekiva Parkway and Protection Act**
  - **Setting Aside More than 3,400 Acres for Conservation**
  - **Largely Elevated to Reduce Accidents Between Vehicles & Wildlife**
  - **Several Wildlife Bridges**
  - **Few Interchanges (Reduce Development)**





# PROJECT ECONOMIC IMPACT

At an estimated cost of \$1.6 Billion for Engineering & Construction, the Wekiva Parkway is Projected to Provide:

<b>Construction Related Jobs</b>	<b>12,272</b>
<b>Supporting Industries Jobs</b>	<b>5,570</b>
<b>Induced Employment Jobs</b>	<b>17,983</b>

**\*Estimated Total Jobs 35,825**

\*Job Multiplier Source: Federal Highway Administration (FHWA) Employment Impacts of Highway Infrastructure Investment; Updated March 2010



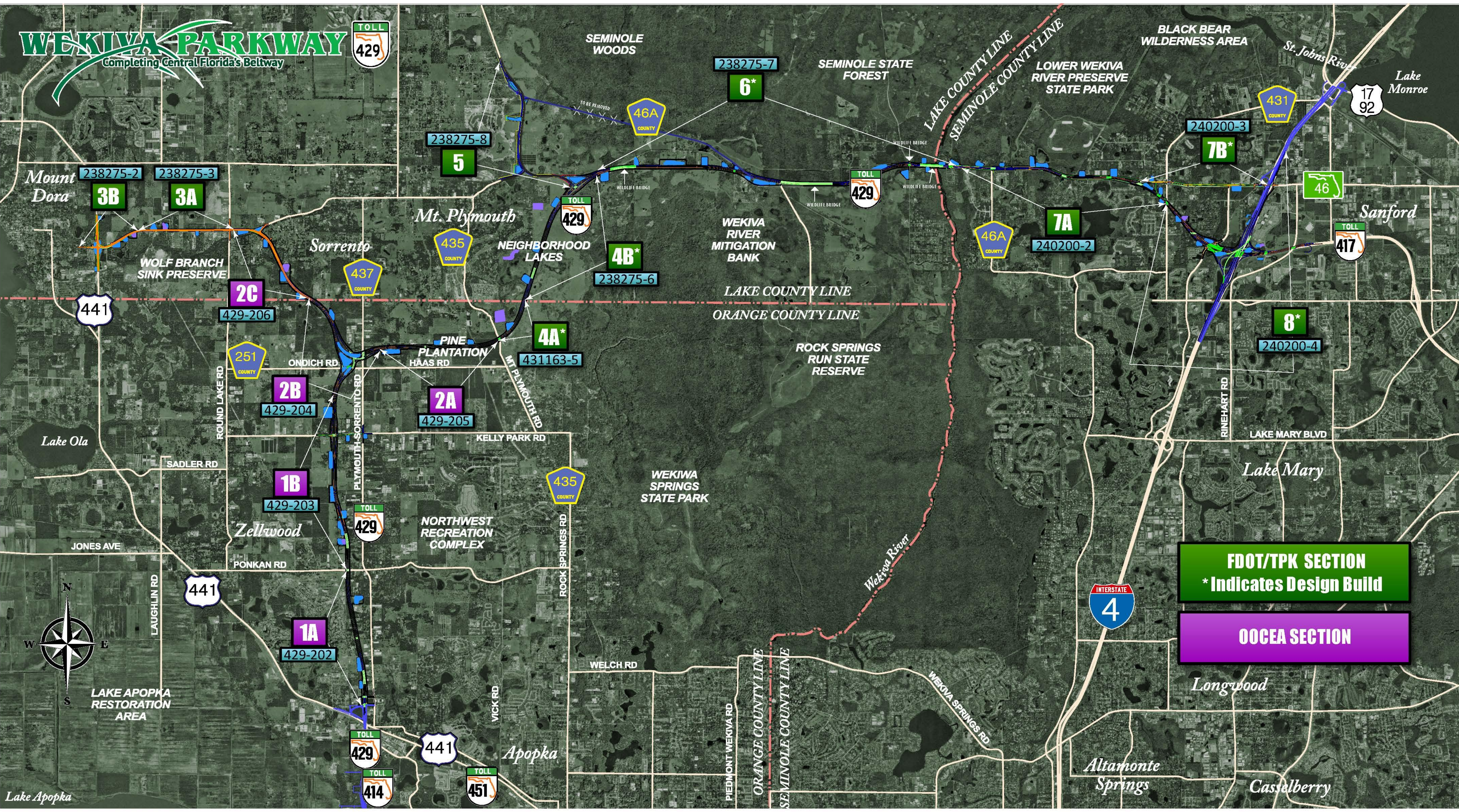
# Project Sections





# WEKIWA PARKWAY

Completing Central Florida's Beltway



**FDOT/TPK SECTION**  
\* Indicates Design Build

**OOCEA SECTION**



# Expressway Authority Sections





# Pier Option

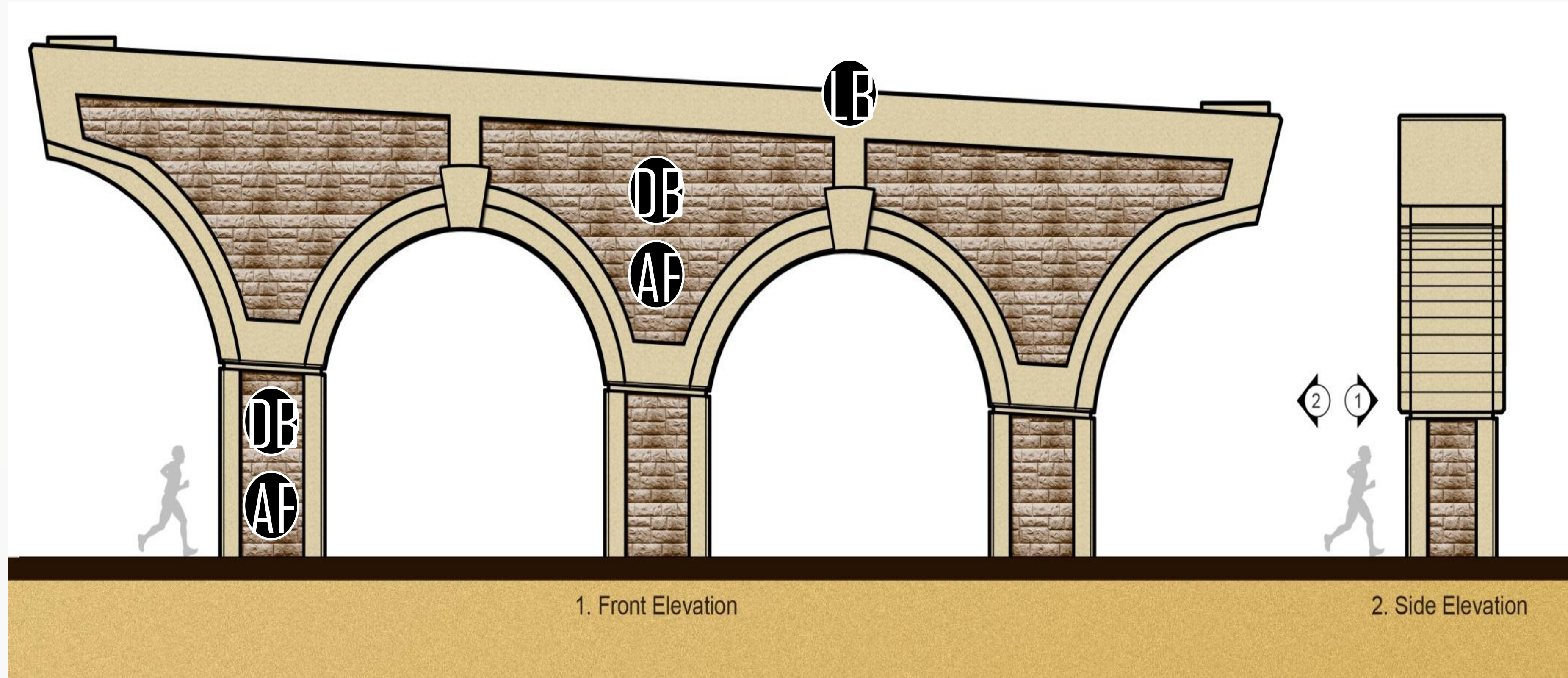
## Standard Colors



Light Brown  
Dark Green

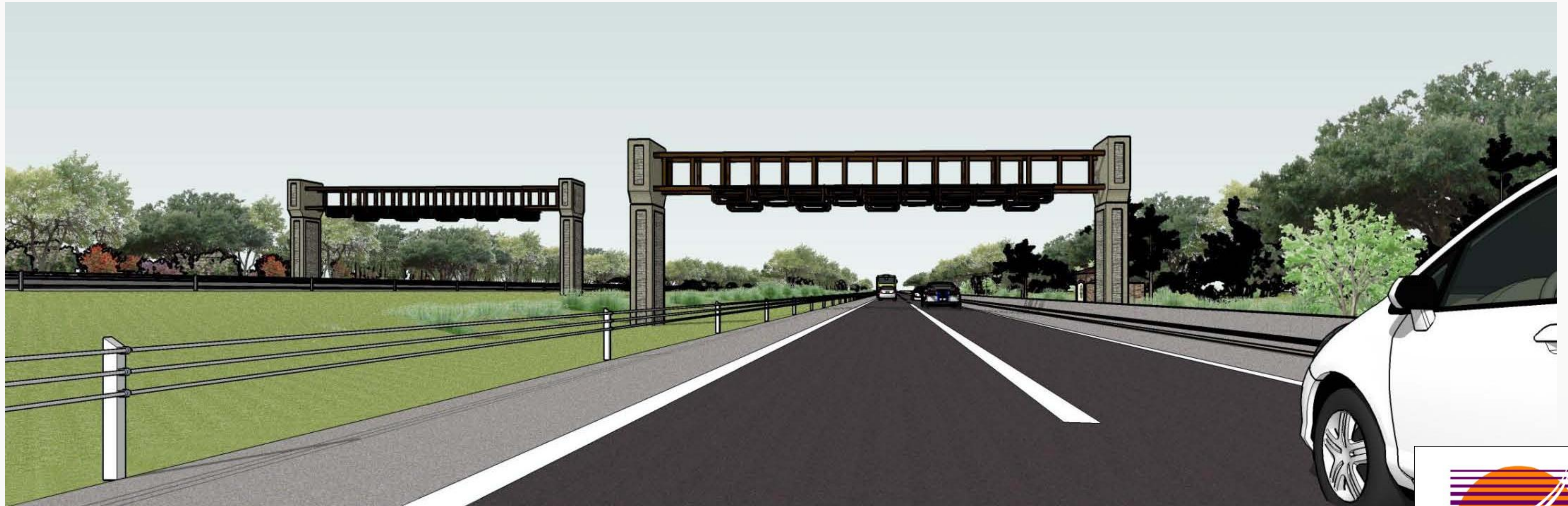


Dark Brown  
Ashlar Formline





# Gantry Support Option

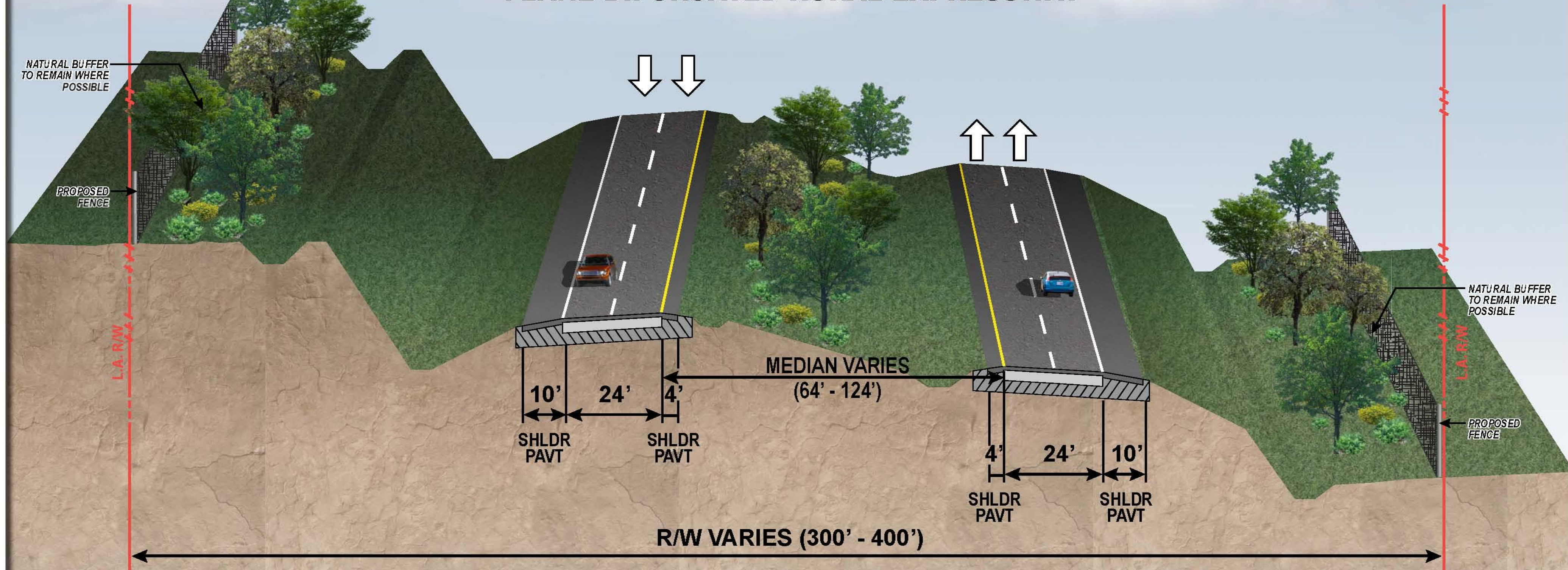




# WEKIVA PARKWAY

## TYPICAL SECTION

### SR 429 (WEKIVA PARKWAY) 4-LANE BIFURCATED RURAL EXPRESSWAY

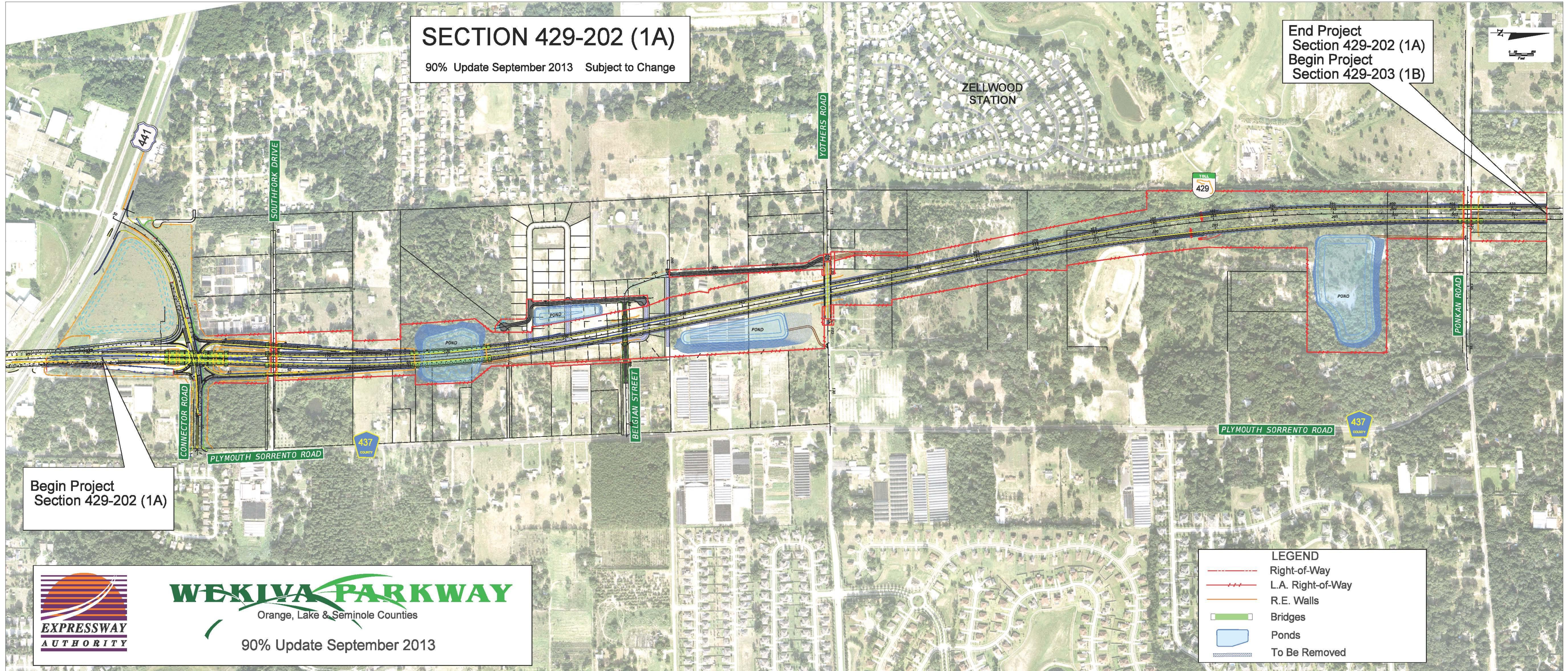


NOTE: PRELIMINARY, SUBJECT TO CHANGE





# Section 1A



**SECTION 429-202 (1A)**  
 90% Update September 2013 Subject to Change

End Project  
 Section 429-202 (1A)  
 Begin Project  
 Section 429-203 (1B)

Begin Project  
 Section 429-202 (1A)

**WEKIVA PARKWAY**  
 Orange, Lake & Seminole Counties  
 90% Update September 2013

LEGEND	
	Right-of-Way
	L.A. Right-of-Way
	R.E. Walls
	Bridges
	Ponds
	To Be Removed



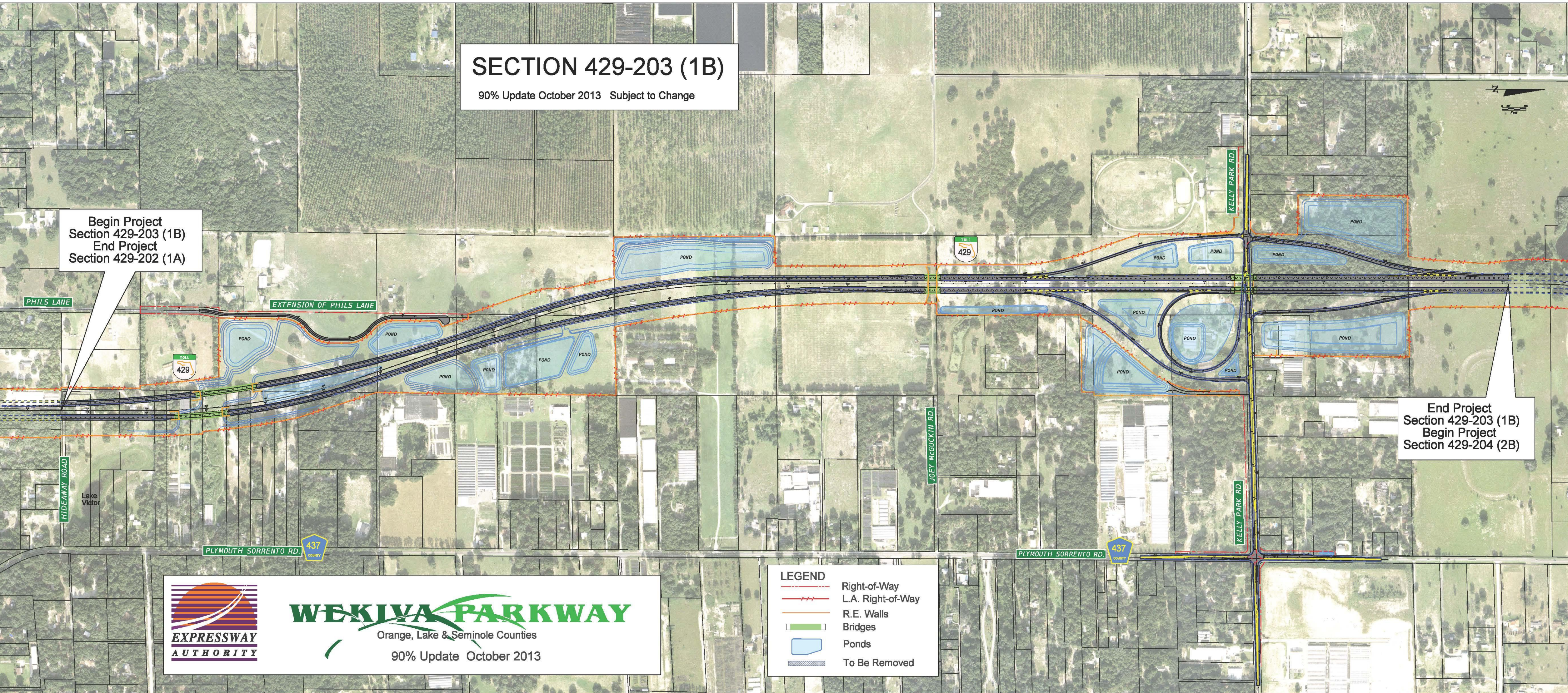
# Section 1B

## SECTION 429-203 (1B)

90% Update October 2013 Subject to Change

Begin Project  
Section 429-203 (1B)  
End Project  
Section 429-202 (1A)

End Project  
Section 429-203 (1B)  
Begin Project  
Section 429-204 (2B)



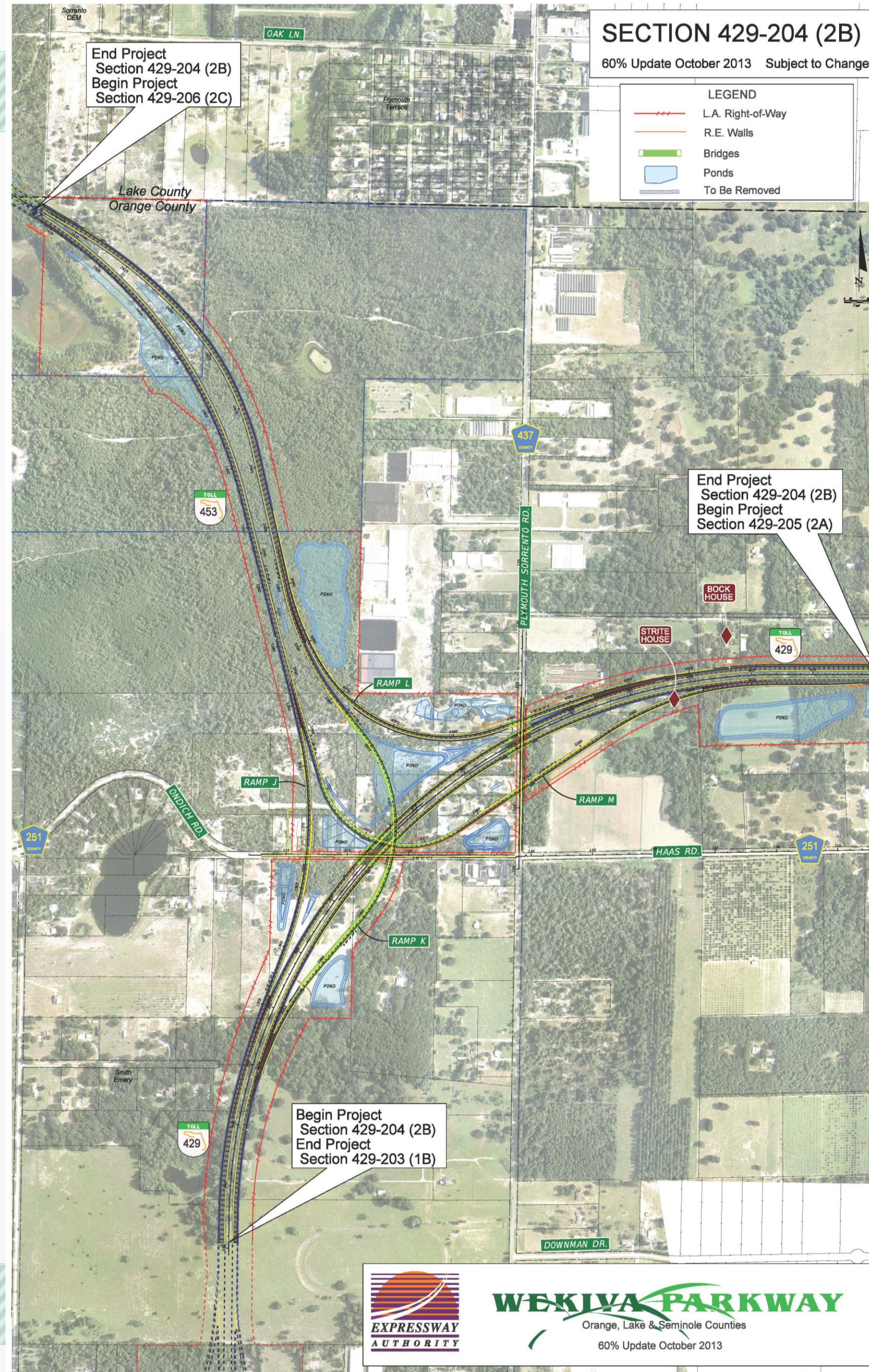
**WEKIIVA PARKWAY**  
Orange, Lake & Seminole Counties  
90% Update October 2013

**LEGEND**

	Right-of-Way
	L.A. Right-of-Way
	R.E. Walls
	Bridges
	Ponds
	To Be Removed



# Section 2B







# WEKIVA PARKWAY

Orange, Lake & Seminole Counties

Updated July 2013

## SECTION 429-205 (2A)

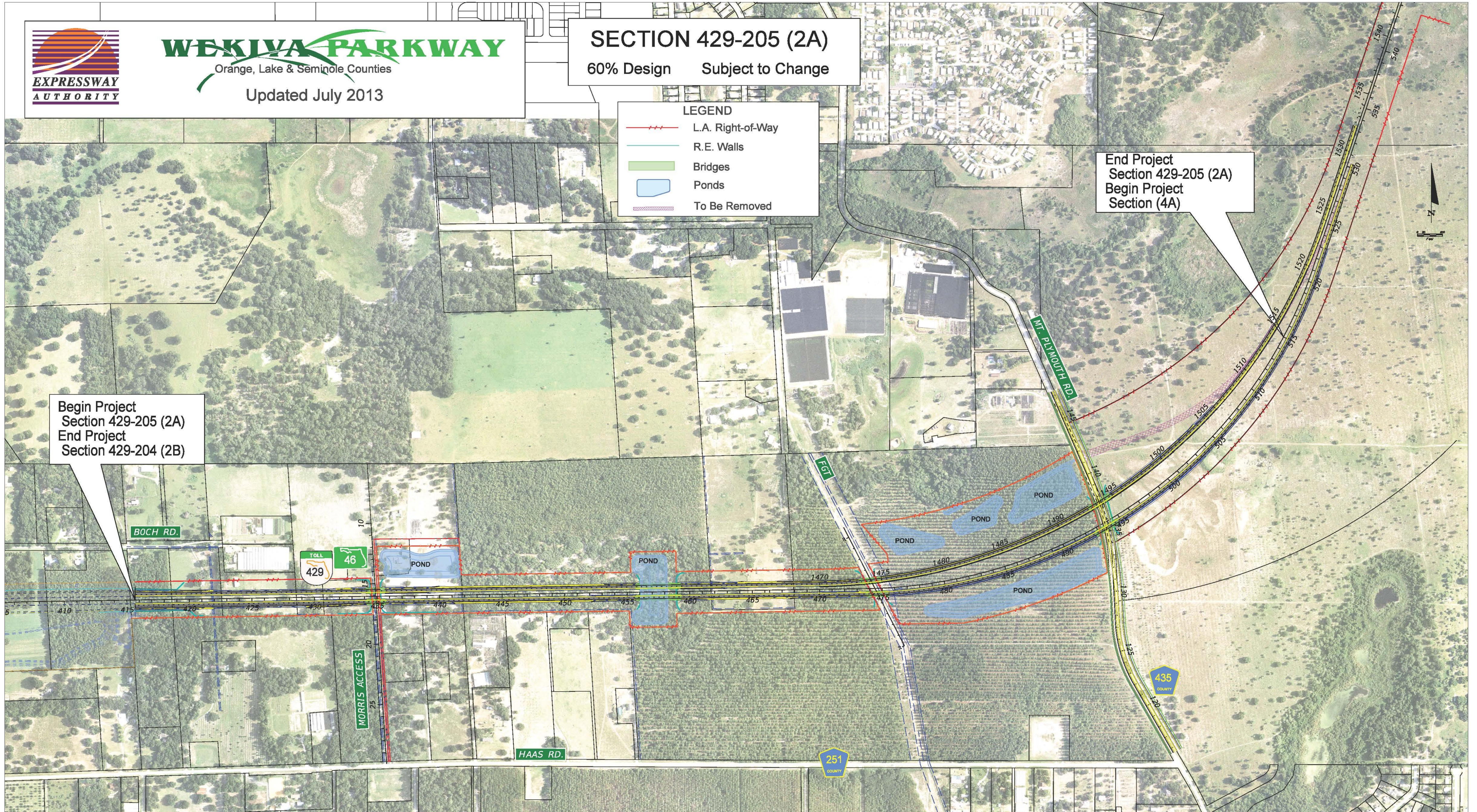
60% Design Subject to Change

### LEGEND

- L.A. Right-of-Way
- R.E. Walls
- Bridges
- Ponds
- To Be Removed

End Project  
Section 429-205 (2A)  
Begin Project  
Section (4A)

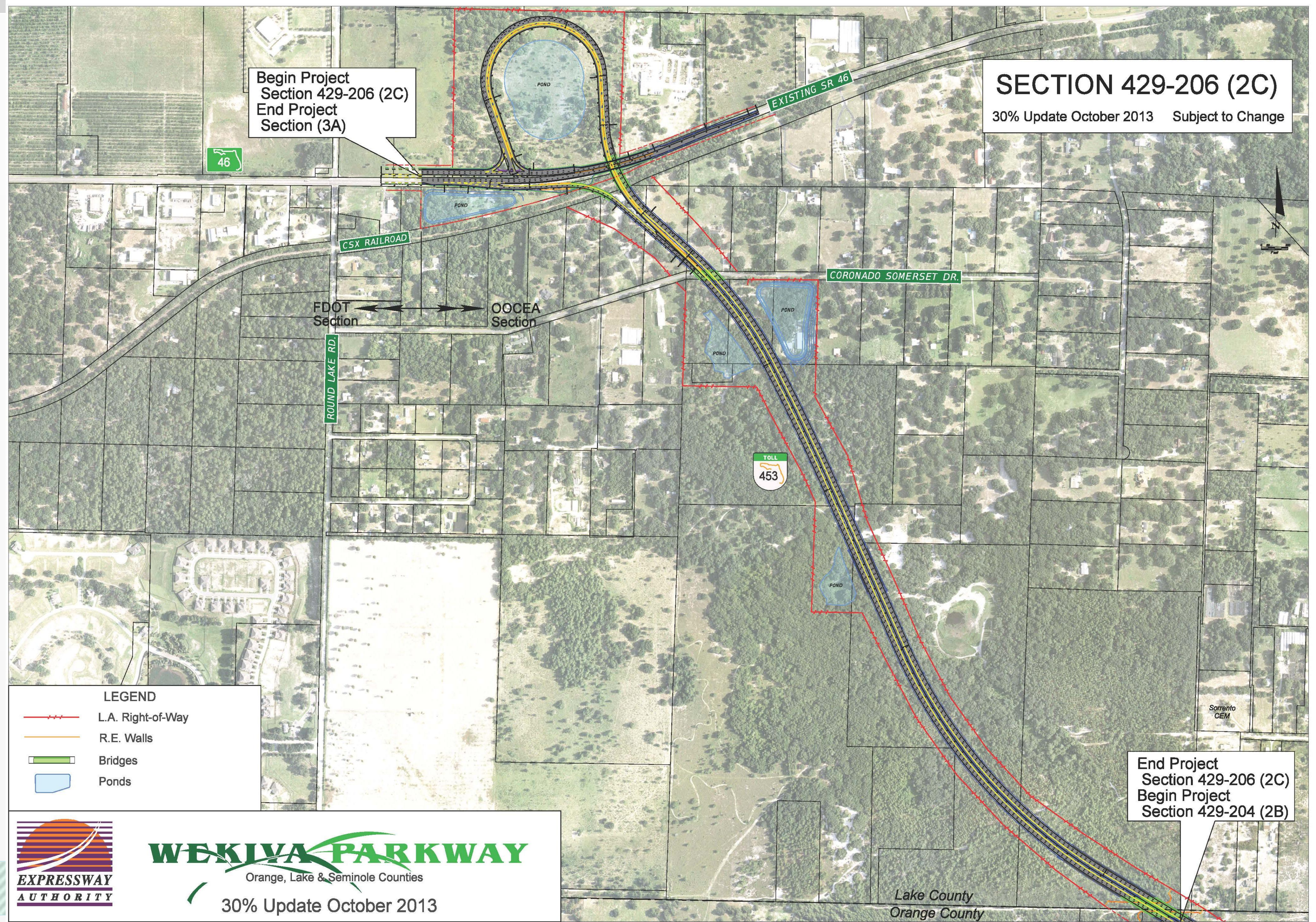
Begin Project  
Section 429-205 (2A)  
End Project  
Section 429-204 (2B)





# Section 2C

**SECTION 429-206 (2C)**  
30% Update October 2013 Subject to Change



**LEGEND**

-  L.A. Right-of-Way
-  R.E. Walls
-  Bridges
-  Ponds



**WEKIIVA PARKWAY**  
Orange, Lake & Seminole Counties  
30% Update October 2013

Lake County  
Orange County

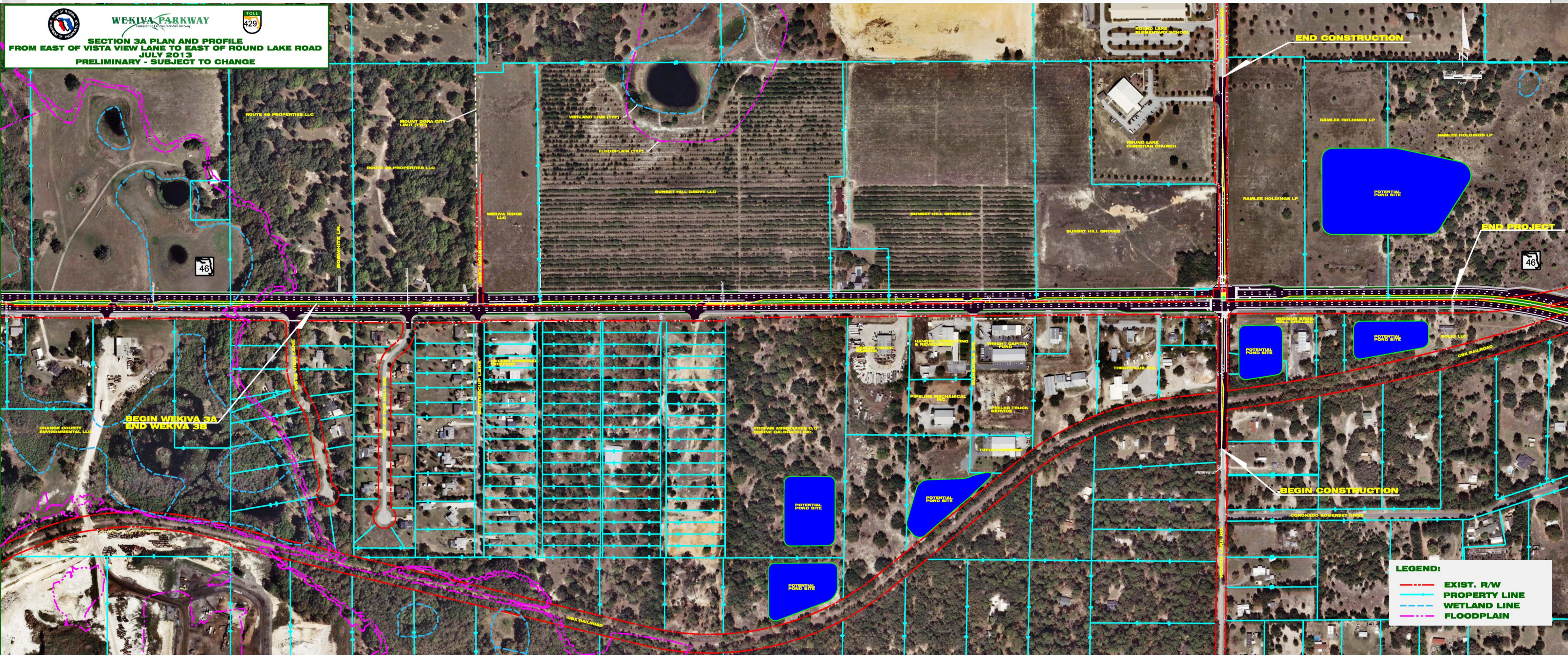


# FDOT Sections





# Section 3A









# Section 4A & 4B



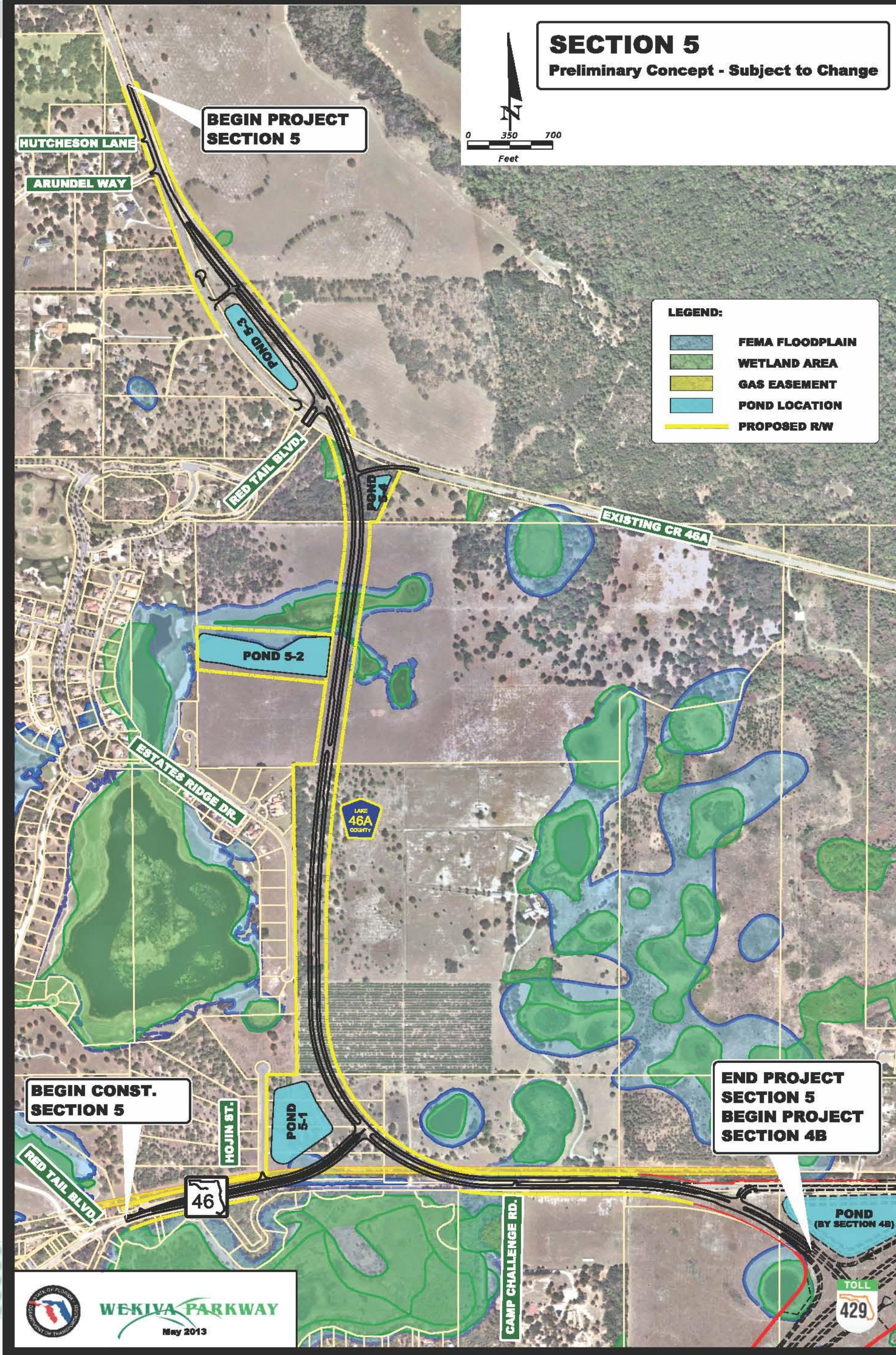


# Section 4A & 4B





# Section 5





# Section 6

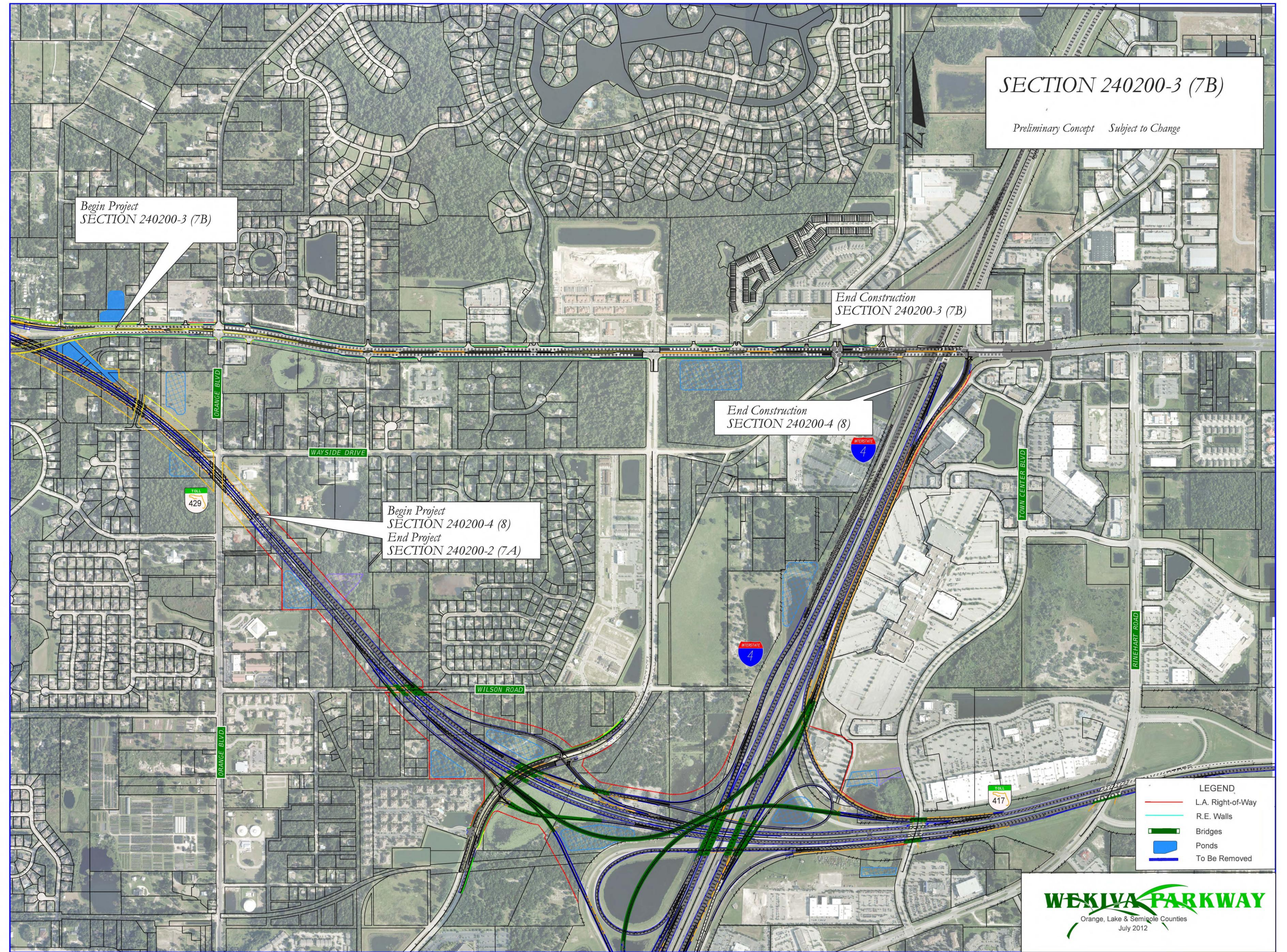








# Sections 7B & 8







# Wekiva Parkway (SR 429) Schedule\*



	2012				2013				2014				2015				2016				2017				2018				2019				2020				2021			
	Q1	Q2	Q3	Q4	Q1	Q2	Q3	Q4	Q1	Q2	Q3	Q4	Q1	Q2	Q3	Q4	Q1	Q2	Q3	Q4	Q1	Q2	Q3	Q4	Q1	Q2	Q3	Q4	Q1	Q2	Q3	Q4	Q1	Q2	Q3	Q4				
<b>Section 1A - OOCEA</b>																																								
Final Design																																								
Right of Way																																								
Construction																																								
<b>Section 1B - OOCEA</b>																																								
Final Design																																								
Right of Way																																								
Construction																																								
<b>Section 2B - OOCEA</b>																																								
Final Design																																								
Right of Way																																								
Construction																																								
<b>Section 2A - OOCEA</b>																																								
Final Design																																								
Right of Way																																								
Construction																																								
<b>Section 2C - OOCEA</b>																																								
Final Design																																								
Right of Way																																								
Construction																																								
<b>Section 3A - FDOT</b>																																								
Final Design																																								
Right of Way																																								
Construction																																								
<b>Section 3B - FDOT</b>																																								
Final Design																																								
Right of Way																																								
Construction																																								
<b>Section 4A* &amp; 4B* - FDOT</b>																																								
Design-Build																																								
<b>Section 5 - FDOT</b>																																								
Final Design																																								
Right of Way																																								
Construction																																								
<b>Section 6* - FDOT</b>																																								
Preliminary Design																																								
Right of Way																																								
Design-Build																																								
<b>Section 7A - FDOT</b>																																								
Final Design																																								
Right of Way																																								
Construction																																								
<b>Section 7B* - FDOT</b>																																								
Design-Build																																								
<b>Section 8* - FDOT</b>																																								
Right of Way																																								
Design-Build																																								





# Schedule Recap

The Wekiva Parkway will be completed and **open to traffic\***  
as follows:

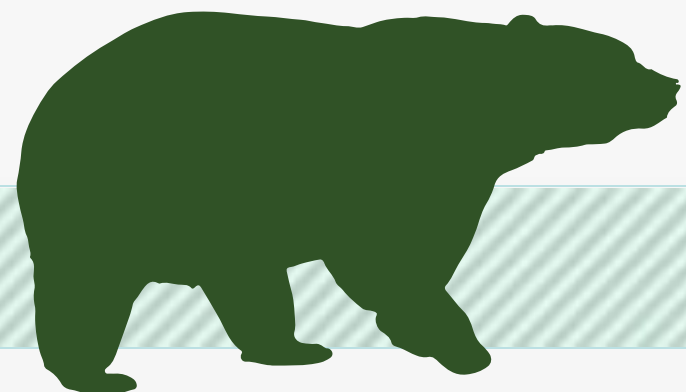
## Orlando-Orange County Expressway Authority Sections:

- 1A & 1B – Late 2016
- 2A, 2B & 2C – 2019

## Florida Department of Transportation Sections

- 3A, 3B & 5 – 2019
- 4A & 4B – Late 2014 (Under Construction)
- 6 – 2020
- 7A – 2020 - 2021
- 7B & 8 – 2021

\*Schedule Subject to Change





# What's Next?

- **Final Design Continues**
- **Opportunities for Community Input**
  - ✓ **Public Meetings: Section 2 – Nov. 7, 2013**  
**Section 7A – Nov. 12, 2013**
  - ✓ **Community Presentations**
  - ✓ **Updates & Comments via Website: [www.wekivaparkway.com](http://www.wekivaparkway.com)**
- **First Section (4A & 4B) Open to Traffic – Late 2014**





## For More Information:

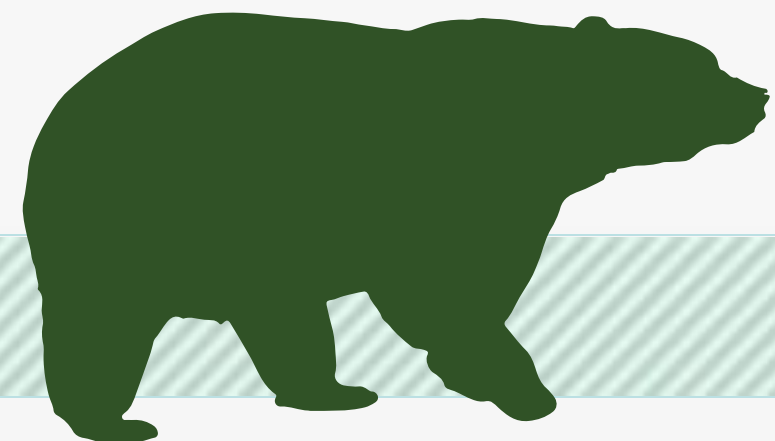
### Mary Brooks

### Public Involvement Coordinator

### C: 407-694-5505

### E: [Info@wekivaparkway.com](mailto:Info@wekivaparkway.com)

### W: [www.wekivaparkway.com](http://www.wekivaparkway.com)



The screenshot shows the official website for Wekiva Parkway, titled "Completing Central Florida's Beltway". The page features a navigation menu with links for Home, FDOT Projects, OOCEA Projects, Projects by County, Project History, and Contact Us. A "TOLL 429" logo is prominently displayed. The main content area includes a "WELCOME" section with a project overview and a list of improvements: building seven miles of four- and six-laning of SR 46, rebuilding the US 441/SR 46 interchange, and relocating the CR 46A connection. A "WEKIVA PARKWAY PROJECT SECTION MAP" is shown, with a legend indicating "FDOT/TPK SECTION" (green) and "OOCEA SECTION" (purple). A "LATEST NEWS" sidebar on the right lists recent updates from August 2013 to May 2013, including design plan milestones and public meetings. At the bottom, there are social media icons for Twitter and Facebook.





# WEKIWA PARKWAY

Completing Central Florida's Beltway



**Thank You!**  
**Questions?**

