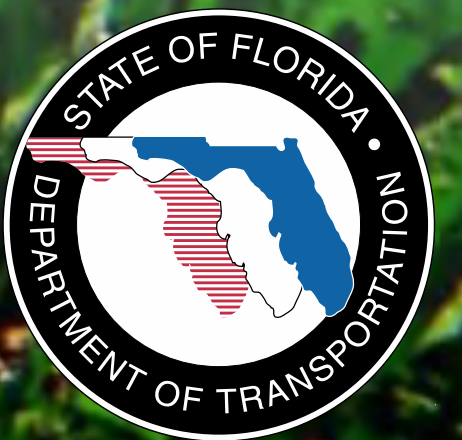




A Regional Transportation Solution

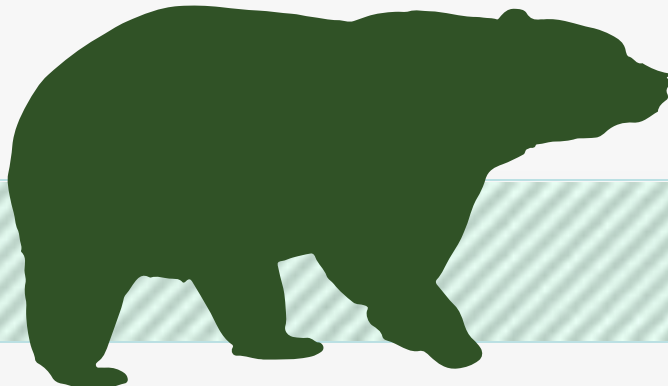
Bella Foresta HOA
Oct. 24, 2013



CENTRAL FLORIDA LEGACY PROJECTS



Funding Partners



WEKIVA PARKWAY



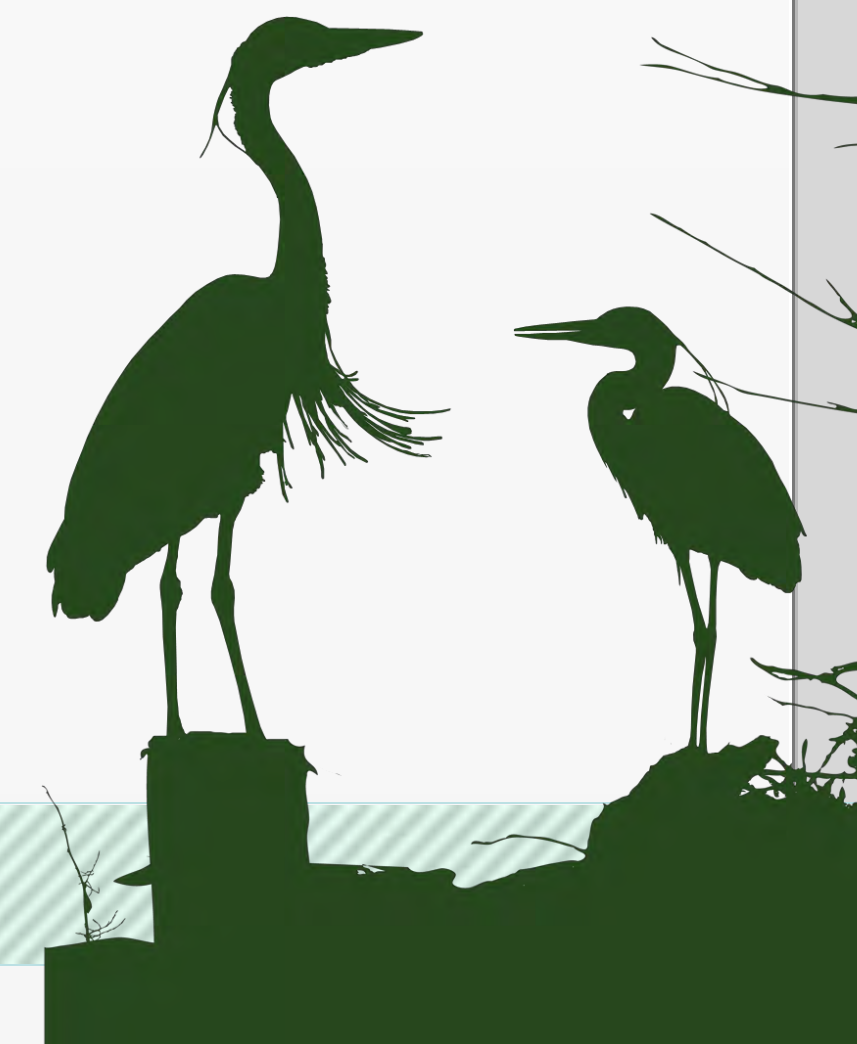
LEGEND

- Existing OCEA System
- Future OCEA Segments (Under Design)
- | OCEA Toll Facility
- Florida's Turnpike System
- - - Future Florida's Turnpike Segments
- Wekiva Parkway PD&E
- Under Construction

WEKIVA PARKWAY

Project Description

- **\$1.6 Billion Completion of Central Florida's Beltway**
- **25-mile Toll Road**
- **Non-Toll Road Improvements:**
 - **Widening SR 46 in Lake & Seminole Counties**
 - **Rebuilding the US 441/SR 46 Interchange in Mount Dora**
 - **Relocating CR 46A to Improve Wildlife Connectivity**
 - **Parallel Service Roads in East Lake & Seminole Counties**
- **Multi-use Trail (Portions of East Lake & Seminole Counties)**



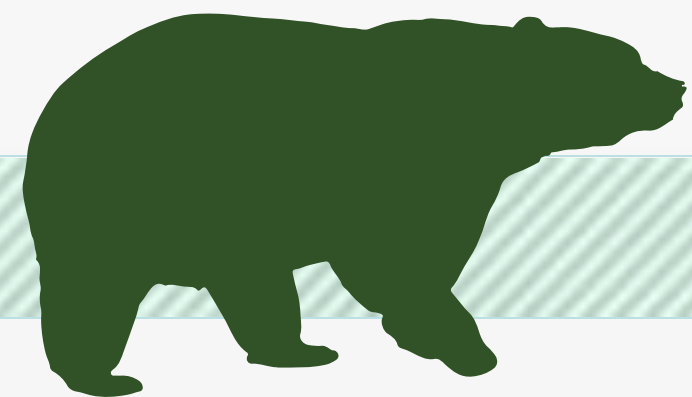
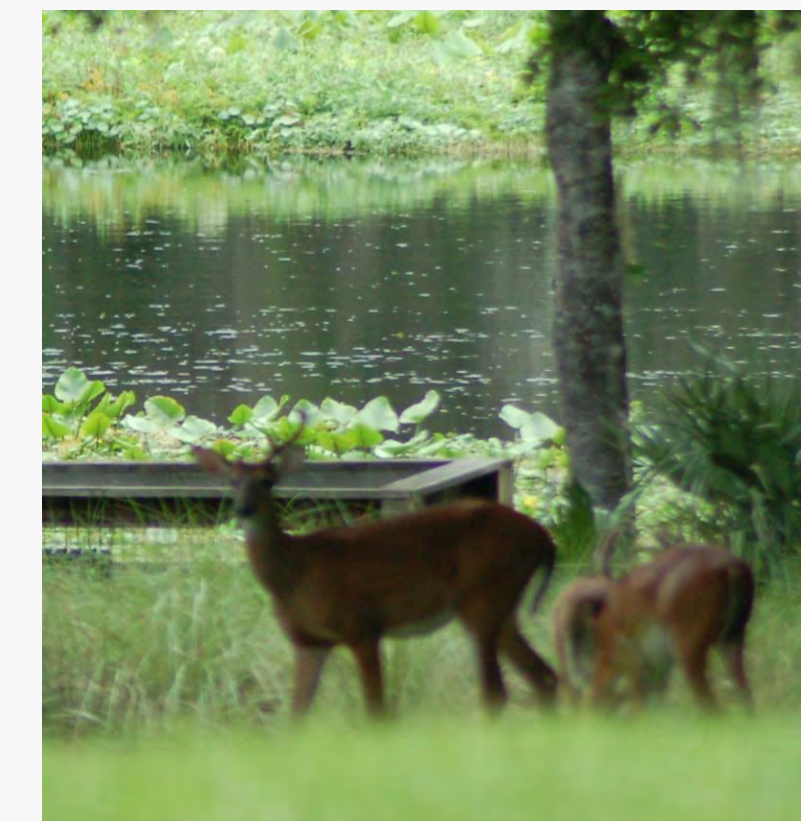
All Electronic Tolling (AET)

- **First in Central Florida**
- **No Toll Plazas (SUNPass or E-Pass)**
- **Improved Traffic Flow Efficiency**
- **Enhanced Safety**
- **Under Development: Locations & Costs**



Protecting Nature

- **Wekiva River: Outstanding Florida Water & National Wild & Scenic River**
- **Authorized by the 2004 Wekiva Parkway and Protection Act**
 - **Setting Aside More than 3,400 Acres for Conservation**
 - **Largely Elevated to Reduce Accidents Between Vehicles & Wildlife**
 - **Several Wildlife Bridges**
 - **Few Interchanges (Reduce Development)**



PROJECT ECONOMIC IMPACT

At an estimated cost of \$1.6 Billion for Engineering & Construction, the Wekiva Parkway is Projected to Provide:

Construction Related Jobs	12,272
Supporting Industries Jobs	5,570
Induced Employment Jobs	17,983

***Estimated Total Jobs 35,825**

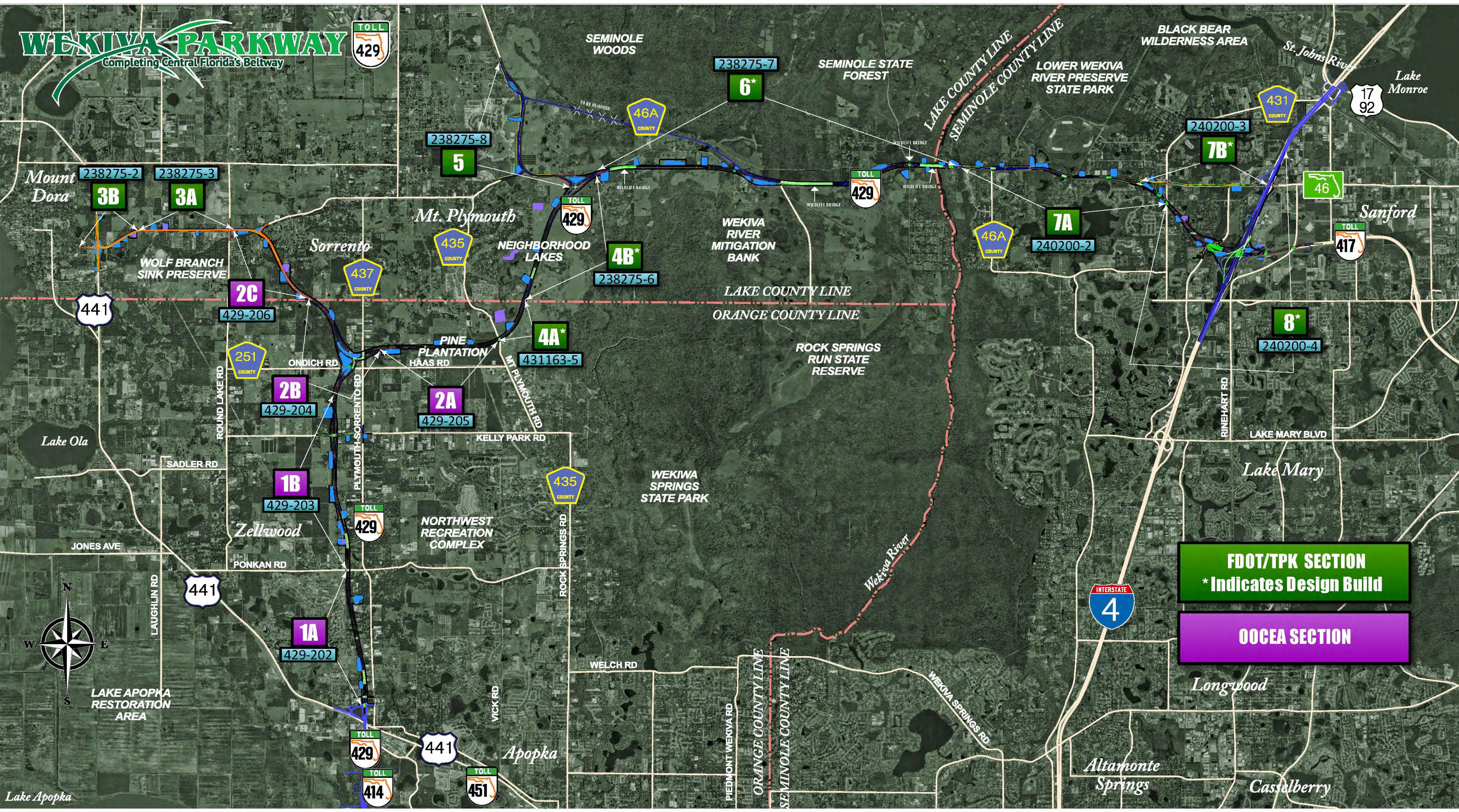
*Job Multiplier Source: Federal Highway Administration (FHWA) Employment Impacts of Highway Infrastructure Investment; Updated March 2010

Project Sections



WEKIWA PARKWAY

Completing Central Florida's Beltway



FDOT/TPK SECTION
* Indicates Design Build

OOCEA SECTION



Lake Apopka

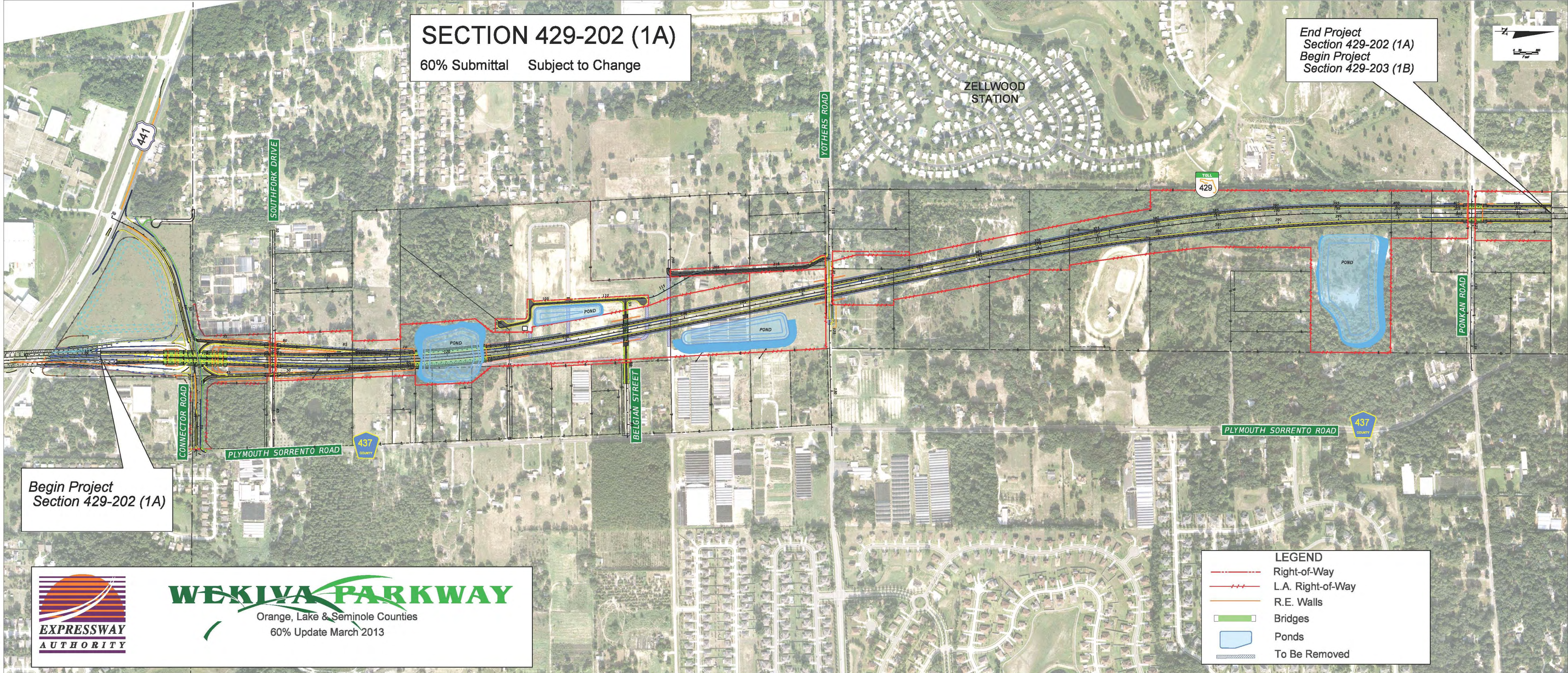
Expressway Authority Sections



Section 1A

SECTION 429-202 (1A)
 60% Submittal Subject to Change

End Project
 Section 429-202 (1A)
 Begin Project
 Section 429-203 (1B)



Begin Project
 Section 429-202 (1A)



WEKIIVA PARKWAY
 Orange, Lake & Seminole Counties
 60% Update March 2013

LEGEND	
	Right-of-Way
	L.A. Right-of-Way
	R.E. Walls
	Bridges
	Ponds
	To Be Removed

Section 1B

SECTION 429-203 (1B)

60% Update March 2013 Subject to Change

Begin Project
Section 429-203 (1B)
End Project
Section 429-202 (1A)

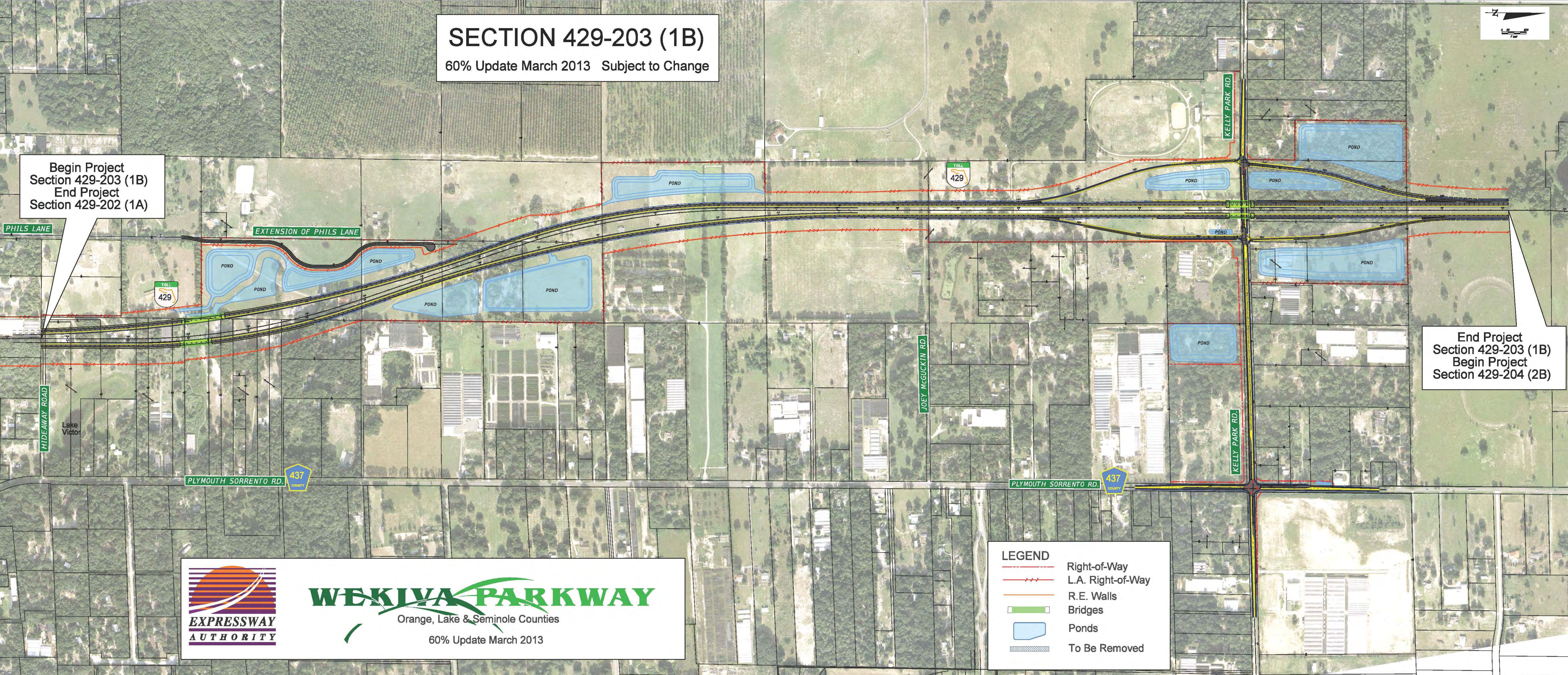
End Project
Section 429-203 (1B)
Begin Project
Section 429-204 (2B)

LEGEND

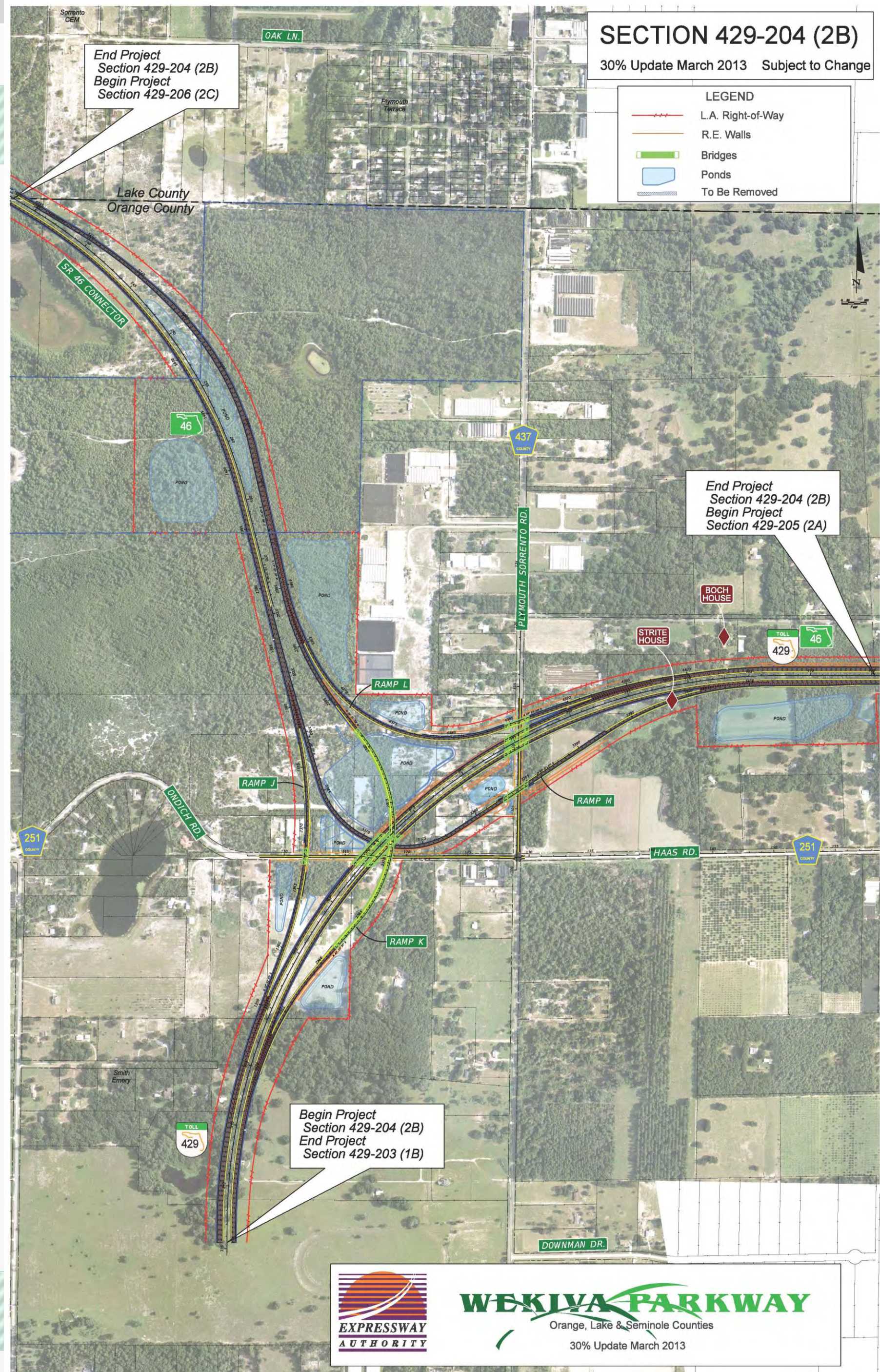
-  Right-of-Way
-  L.A. Right-of-Way
-  R.E. Walls
-  Bridges
-  Ponds
-  To Be Removed



WEKIWA PARKWAY
Orange, Lake & Seminole Counties
60% Update March 2013



Section 2B





WEKIVA PARKWAY

Orange, Lake & Seminole Counties

Updated July 2013

SECTION 429-205 (2A)

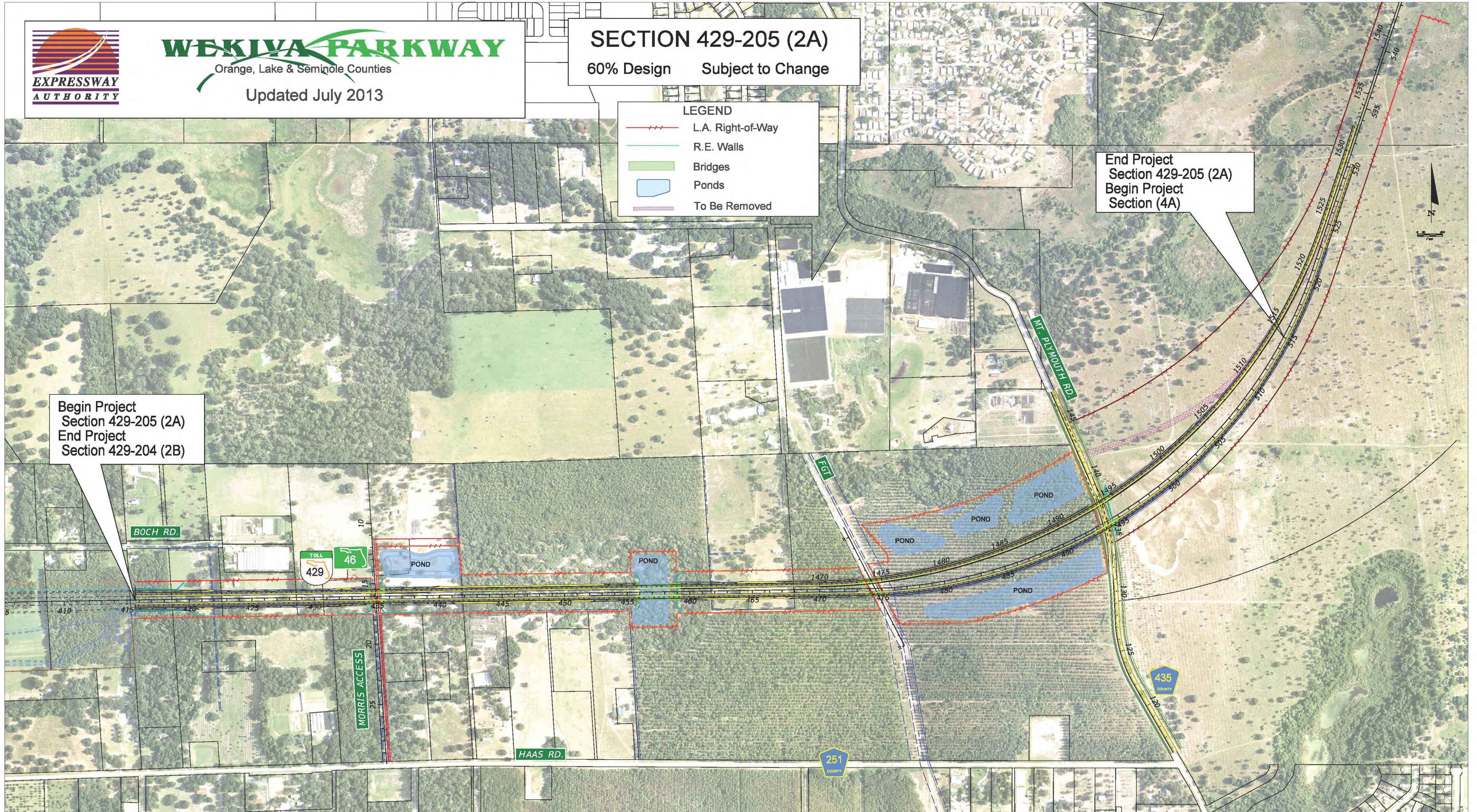
60% Design Subject to Change

LEGEND

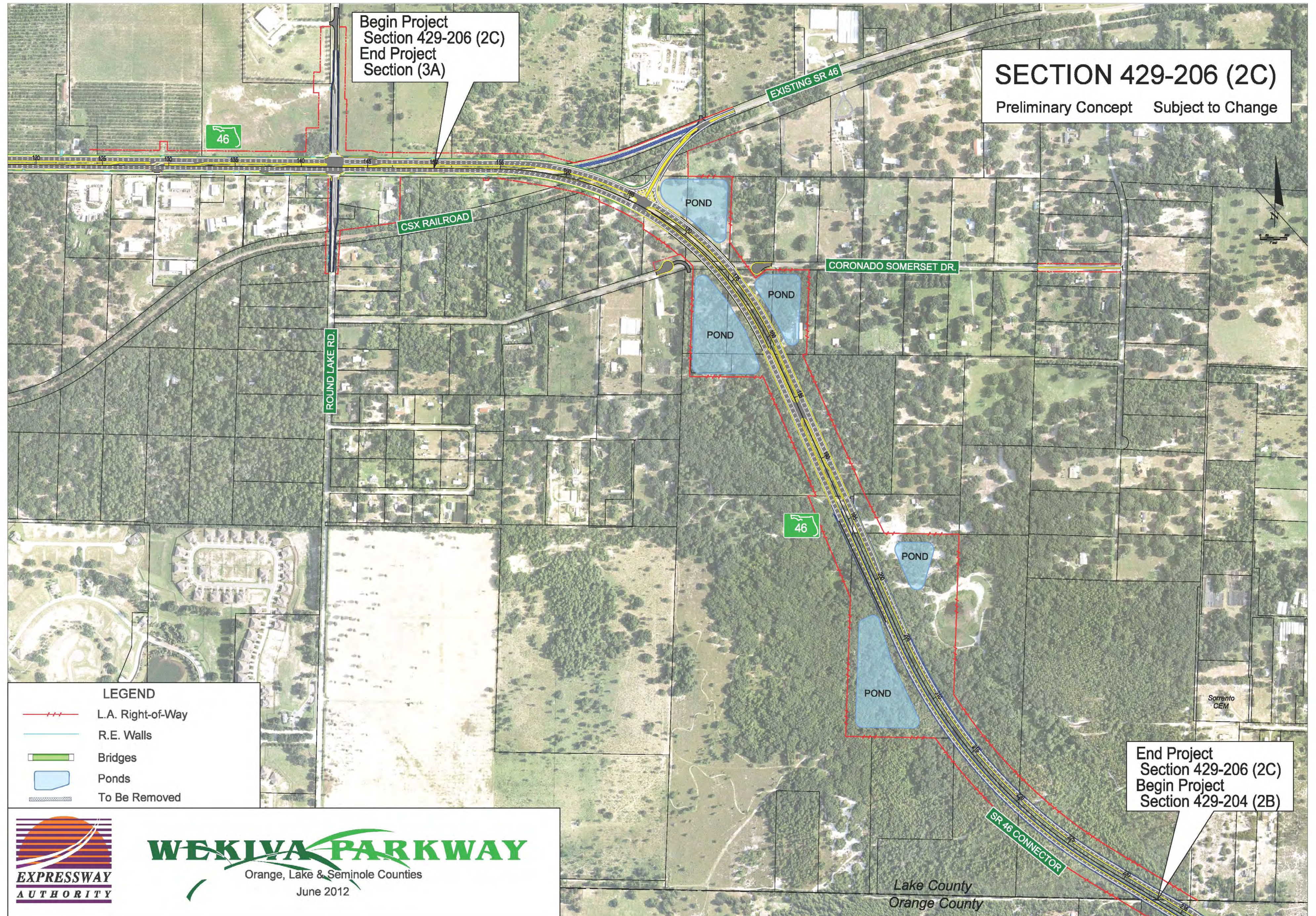
- L.A. Right-of-Way
- R.E. Walls
- Bridges
- Ponds
- To Be Removed

End Project
Section 429-205 (2A)
Begin Project
Section (4A)

Begin Project
Section 429-205 (2A)
End Project
Section 429-204 (2B)



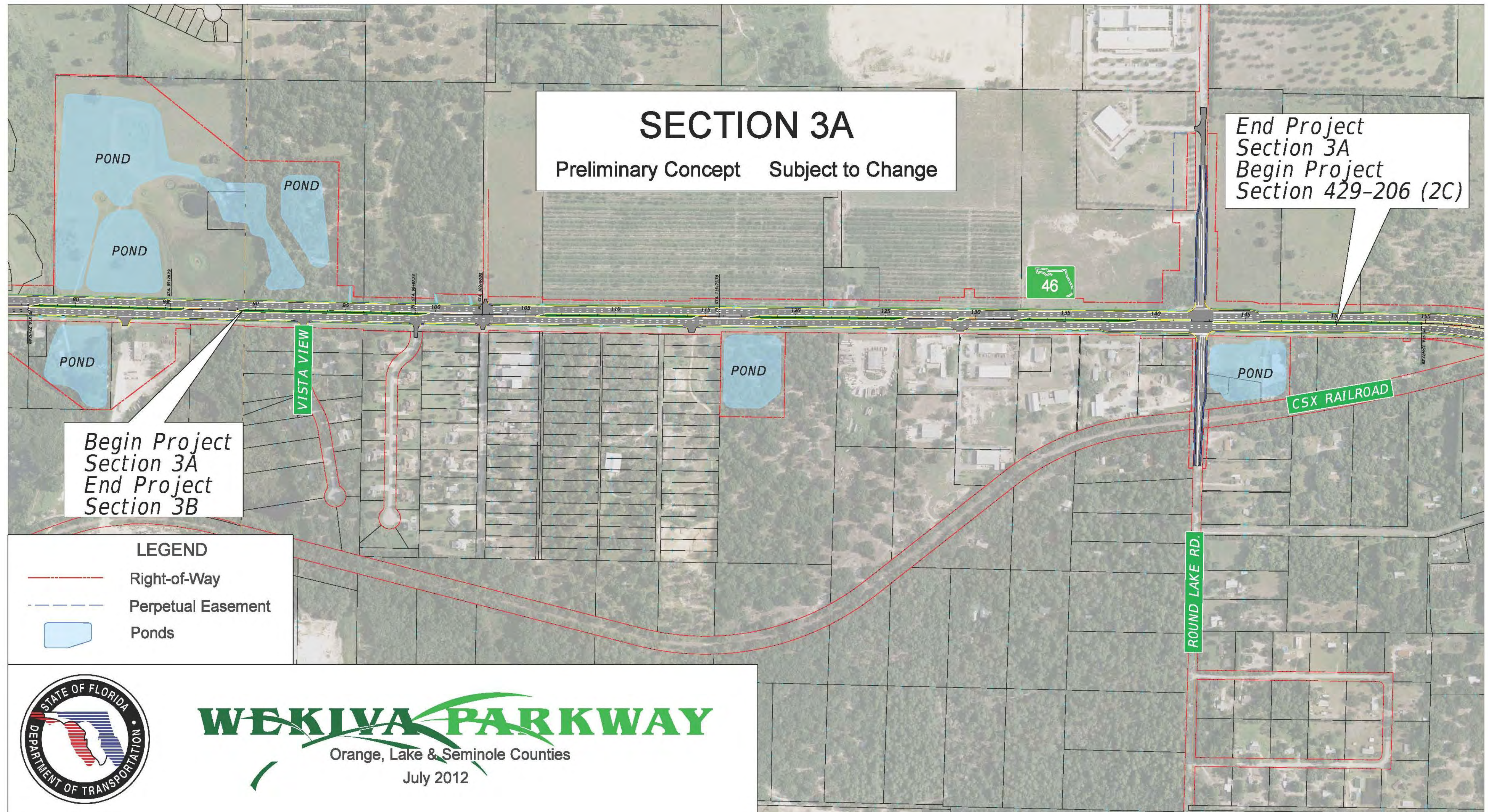
Section 2C



FDOT Sections



Section 3A



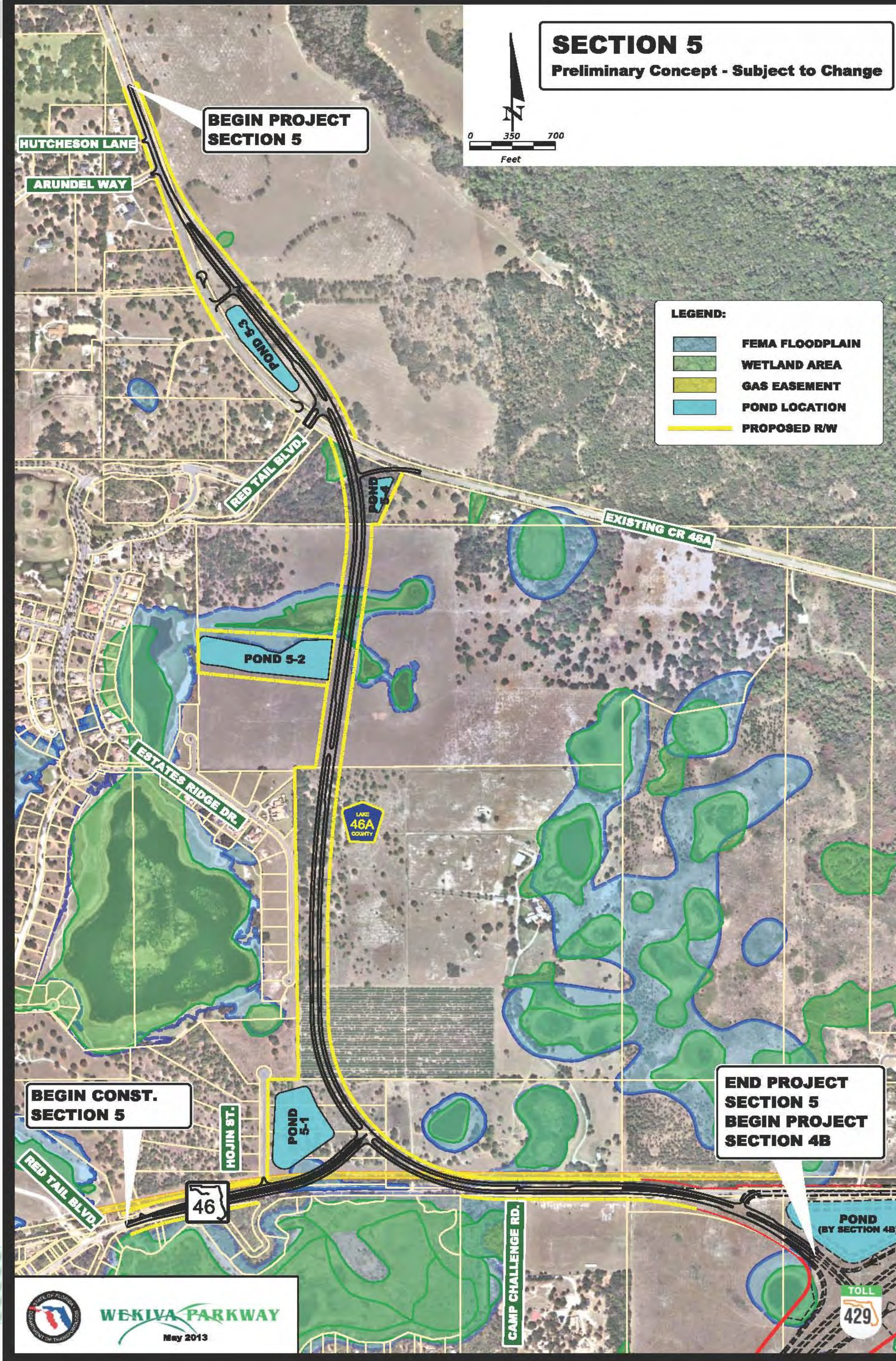
Section 4A & 4B



Section 4A & 4B



Section 5



Section 6

SECTION 238275-7 (6)

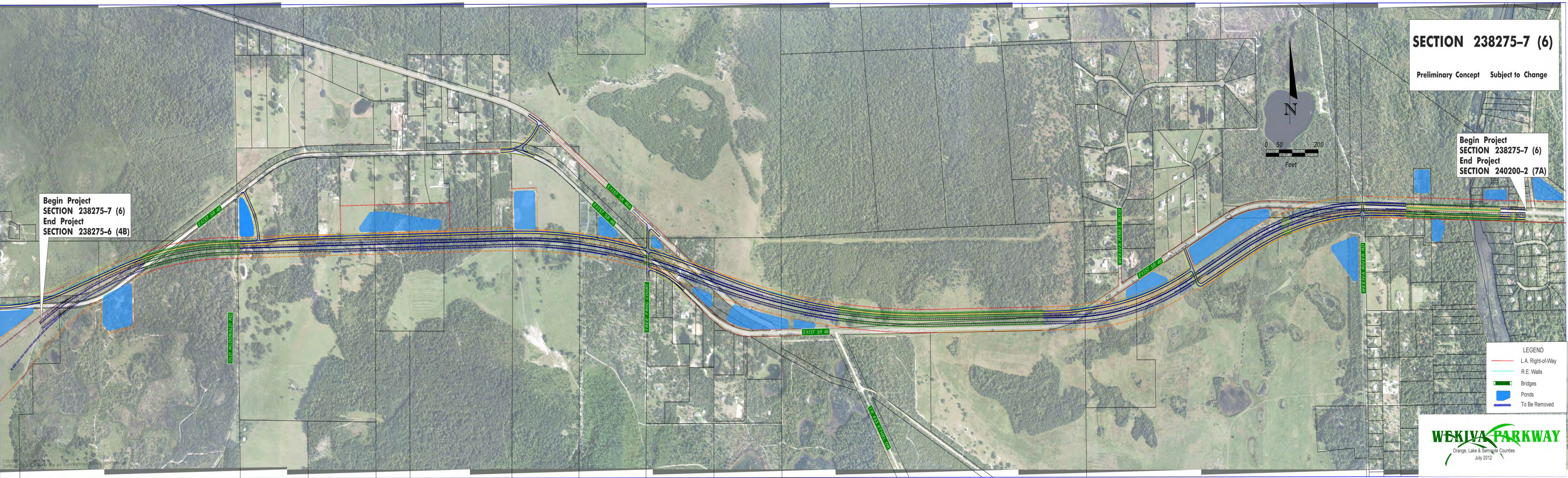
Preliminary Concept Subject to Change

Begin Project
SECTION 238275-7 (6)
End Project
SECTION 240200-2 (7A)

Begin Project
SECTION 238275-7 (6)
End Project
SECTION 238275-6 (4B)



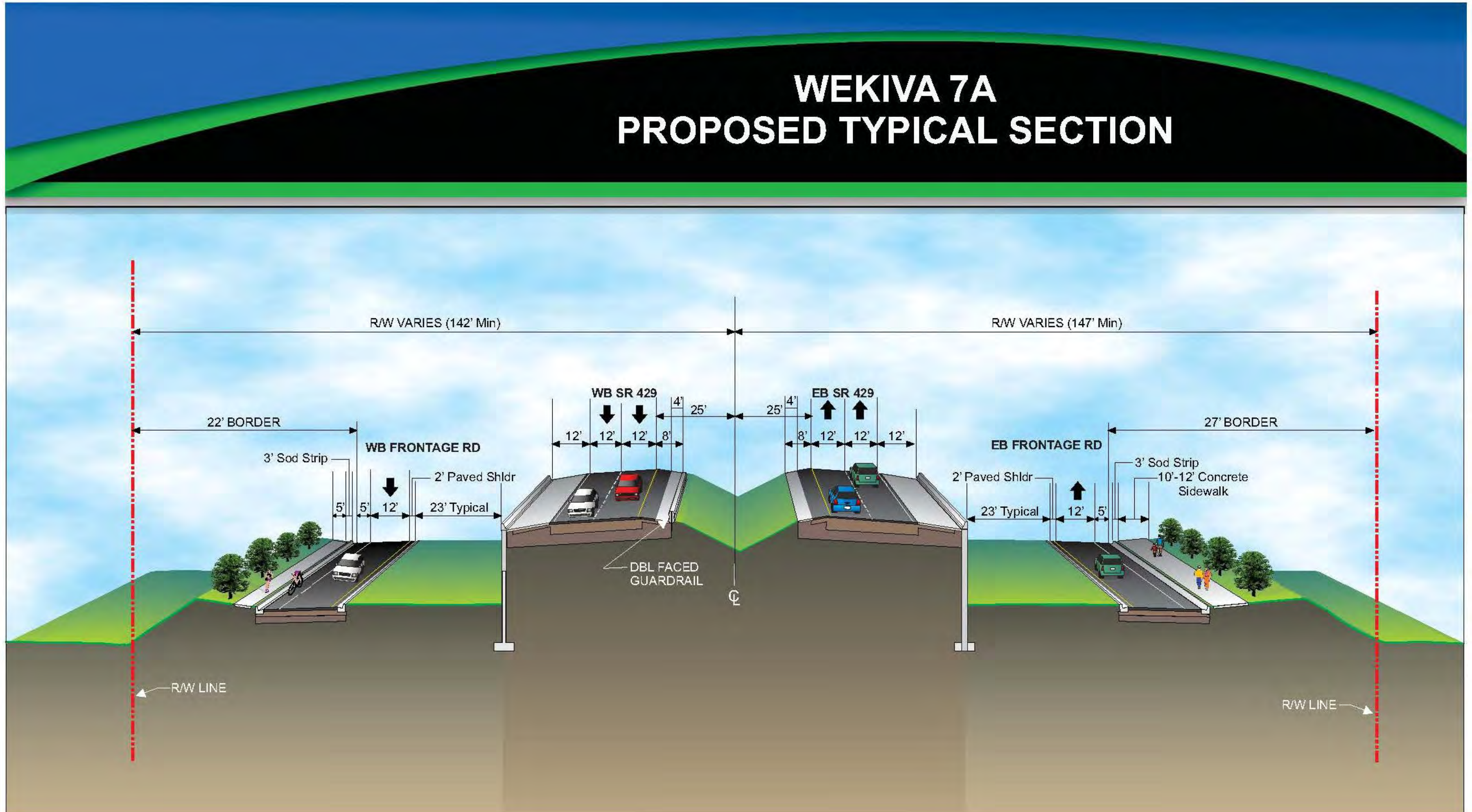
- LEGEND
- L.A. Right-of-Way
 - R.E. Walls
 - Bridges
 - Ponds
 - To Be Removed



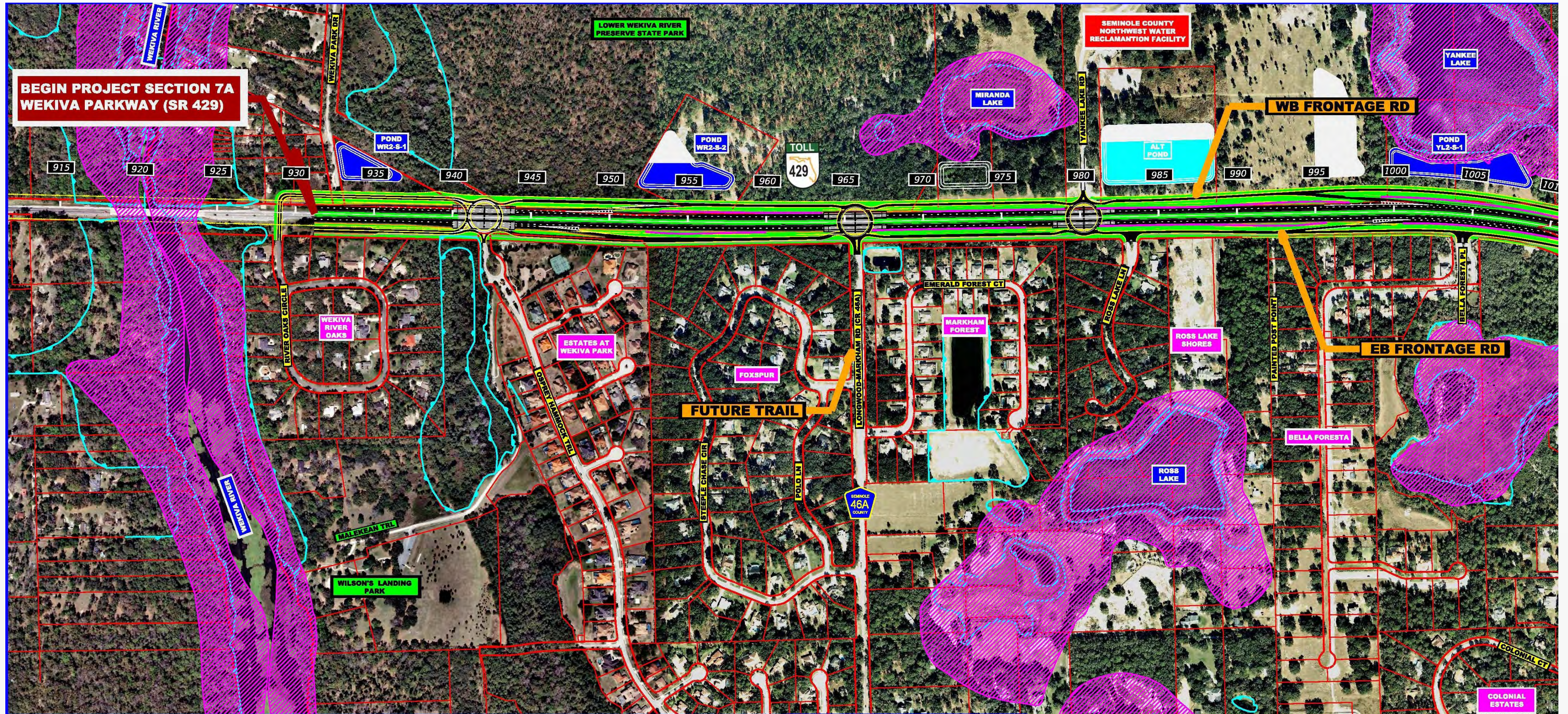
Section 7A



Section 7A – Typical Section



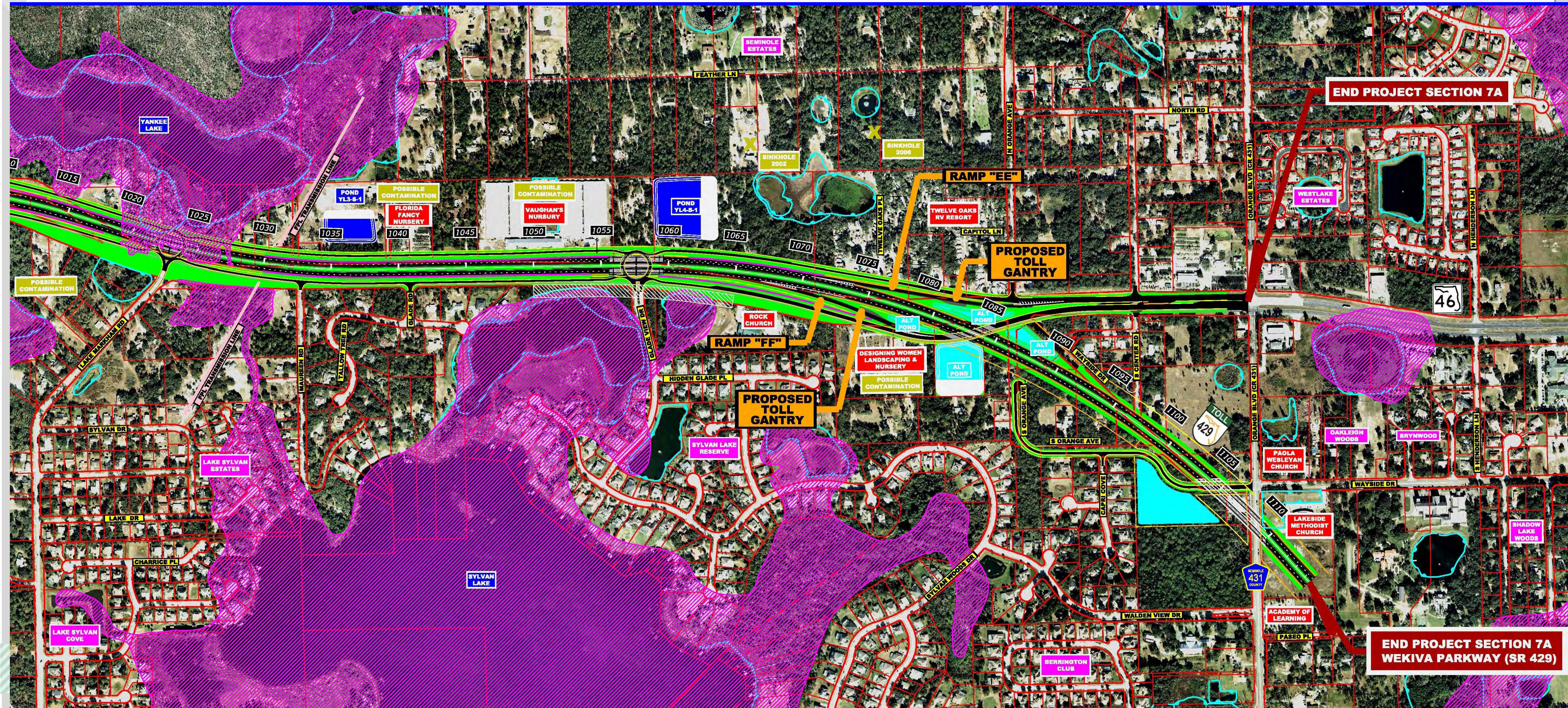
Section 7A – Safety Enhancements



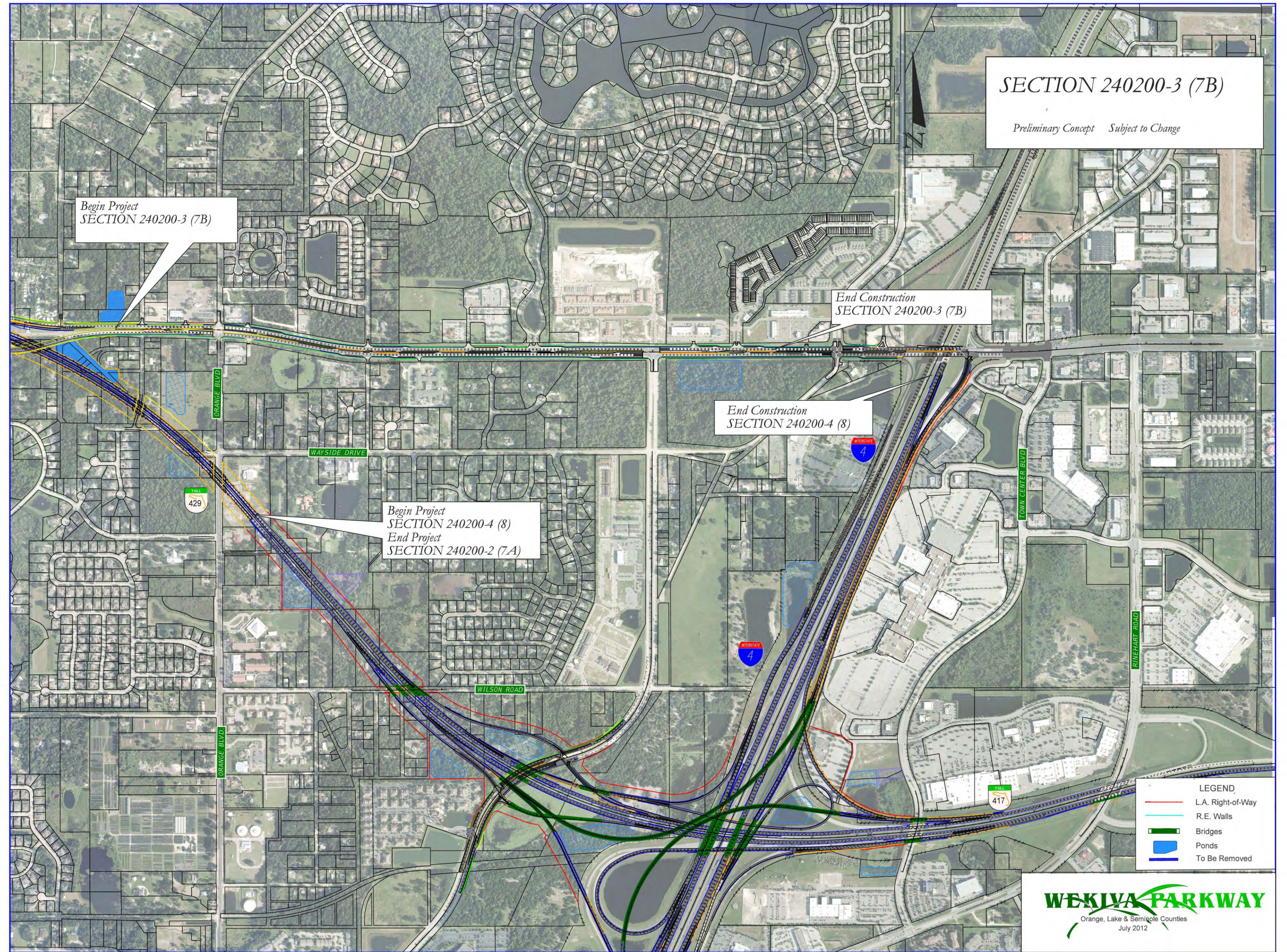
WEKIVA PARKWAY (SR 429)
SECTION 7A
FEBRUARY 14, 2013

LEGEND					
	PROPOSED ROADWAY		SOD		SIGNALIZED INTERSECTION
	PROPOSED BRIDGE		FLOODPLAIN		EXISTING ROW & PROPERTY LINE
	PROPOSED PONDS		PROPOSED SIDEWALK & SHARED USE PATH		MUCK LIMITS
	WETLANDS		PROPOSED ROW		
	PROPOSED I/A ROW				

Section 7A – Safety Enhancements



Sections 7B & 8





Wekiva Parkway (SR 429) Schedule*



	2012				2013				2014				2015				2016				2017				2018				2019				2020				2021							
	Q1	Q2	Q3	Q4	Q1	Q2	Q3	Q4	Q1	Q2	Q3	Q4	Q1	Q2	Q3	Q4	Q1	Q2	Q3	Q4	Q1	Q2	Q3	Q4	Q1	Q2	Q3	Q4	Q1	Q2	Q3	Q4	Q1	Q2	Q3	Q4	Q1	Q2	Q3	Q4				
Section 1A - OOCEA																																												
Final Design																																												
Right of Way																																												
Construction																																												
Section 1B - OOCEA																																												
Final Design																																												
Right of Way																																												
Construction																																												
Section 2B - OOCEA																																												
Final Design																																												
Right of Way																																												
Construction																																												
Section 2A - OOCEA																																												
Final Design																																												
Right of Way																																												
Construction																																												
Section 2C - OOCEA																																												
Final Design																																												
Right of Way																																												
Construction																																												
Section 3A - FDOT																																												
Final Design																																												
Right of Way																																												
Construction																																												
Section 3B - FDOT																																												
Final Design																																												
Right of Way																																												
Construction																																												
Section 4A* & 4B* - FDOT																																												
Design-Build																																												
Section 5 - FDOT																																												
Final Design																																												
Right of Way																																												
Construction																																												
Section 6* - FDOT																																												
Preliminary Design																																												
Right of Way																																												
Design-Build																																												
Section 7A - FDOT																																												
Final Design																																												
Right of Way																																												
Construction																																												
Section 7B* - FDOT																																												
Design-Build																																												
Section 8* - FDOT																																												
Right of Way																																												
Design-Build																																												



Schedule Recap

The Wekiva Parkway will be completed and **open to traffic*** as follows:

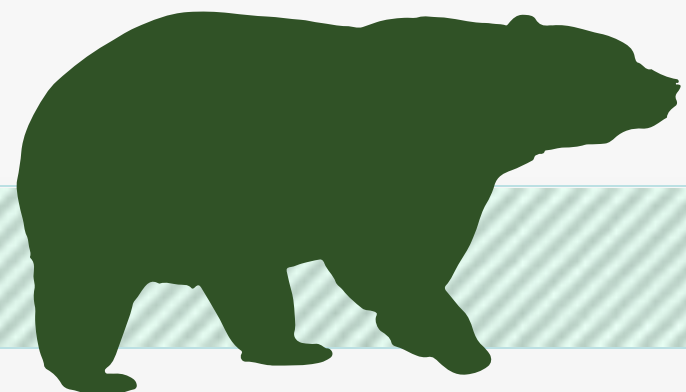
Orlando-Orange County Expressway Authority Sections:

- 1A & 1B – Late 2016
- 2A, 2B & 2C – 2019

Florida Department of Transportation Sections

- 3A, 3B & 5 – 2019
- 4A & 4B – Late 2014 (Under Construction)
- 6 – 2020
- **7A – 2020 - 2021**
- 7B & 8 – 2021

*Schedule Subject to Change



What's Next?

- **Final Design Continues**
- **Opportunities for Community Input**
 - ✓ **Public Meetings: Section 2 – Nov. 7, 2013**
Section 7A – Nov. 12, 2013
 - ✓ **Community Presentations**
 - ✓ **Updates & Comments via Website: www.wekivaparkway.com**
- **First Section (4A & 4B) Open to Traffic – Late 2014**



For More Information:

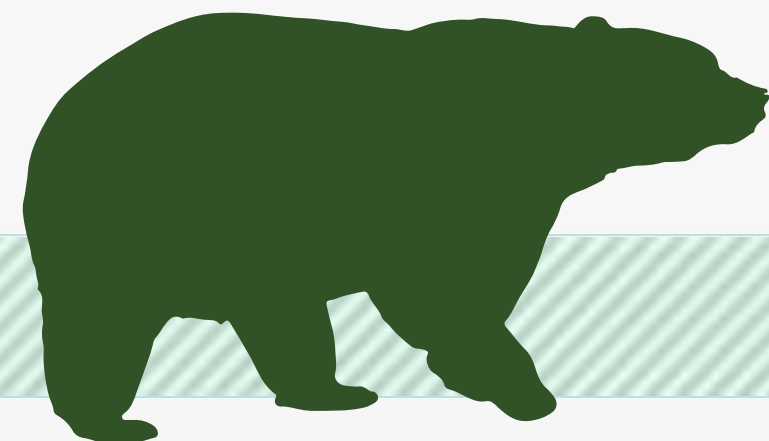
Mary Brooks

Public Involvement Coordinator

C: 407-694-5505

E: Info@wekivaparkway.com

W: www.wekivaparkway.com



WEKIVA PARKWAY
Completing Central Florida's Beltway

TOLL 429

HOME | PROJECTS | COCEA PROJECTS | PROJECTS BY COUNTY | PROJECT HISTORY | FAQ | CONTACT US

WELCOME

On behalf of the Florida Department of Transportation and the Orlando-Orange County Expressway Authority, thank you for your interest in the Wekiva Parkway design and construction projects. The Wekiva Parkway (State Road 429) is a cooperative effort between these agencies and the Florida's Turnpike Enterprise.

The Wekiva Parkway (SR 429) would connect to SR 417, completing the beltway around northwest metropolitan Orlando. This estimated \$1.5 billion project includes \$500 million of non-toll road improvements including:

- Building seven (7) miles of four- and six-laning of SR 46 in Lake and Seminole Counties
- Rebuilding the US 441/SR 46 interchange in Mount Dora
- Relocating the CR 46A connection to SR 46 to provide improved wildlife connectivity and additional local road system benefits

[Click here](#) to view the overall project schedule. Please understand schedules are subject to change due to a host of variables.

WEKIVA PARKWAY PROJECT SECTION MAP

Click on a Section Number for Project Details.

[Click here to view larger map](#)

The 25-mile tolled expressway will provide travel alternatives and relieve US 441, SR 46 and other area roads of traffic congestion resulting from growth and travel between Orange, Lake and Seminole Counties.

Authorized in 2004 by the Wekiva Parkway and Protection Act (Chapter 369, Part III, F.S.), this expressway has been heralded as a shining example for transportation planning through an environmentally sensitive area. Development of the Wekiva Parkway has included setting aside more than 3,400 acres of

LATEST NEWS

Click on text for details

August 2013
COCEA Reaches 60% Design Plans on Section 2A

July 2013
FDOT Kicks Off Design for Section 7A

July 2013
Gov. Scott Kicks Off Wekiva Parkway - July 10, 2013

July 2013
150 Attend Section 3A & 3B Public Meeting Open House - July 11, 2013

June 2013
Nearly 200 Attend FDOT Section 8 Public Meeting - June 11, 2013

May 2013
Lake Co. Commissioners Adopt Recommended CR 46A Alignment

PUBLIC MEETING - Sections 3A & 3B Preliminary Design Open House Reop

PROJECT DOCUMENTS

PRESENTATIONS

PRE 88 RELEASES

[All News](#)

CONTACT US

Mary Brooks
Public Information Officer
Info@wekivaparkway.com
407-694-5505

twitter

facebook

WEKIWA PARKWAY

Completing Central Florida's Beltway



Thank You!

Questions?

