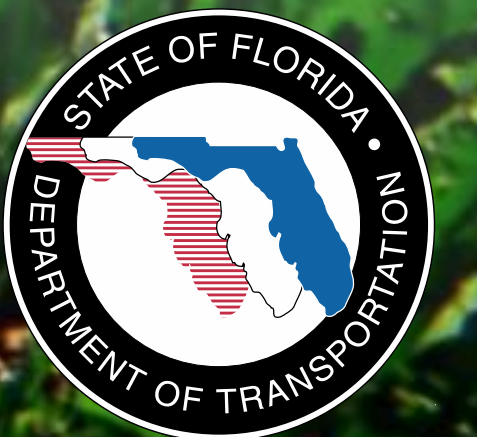




# A Regional Transportation Solution

**City of Apopka Board of Commissioners  
March 6, 2013**



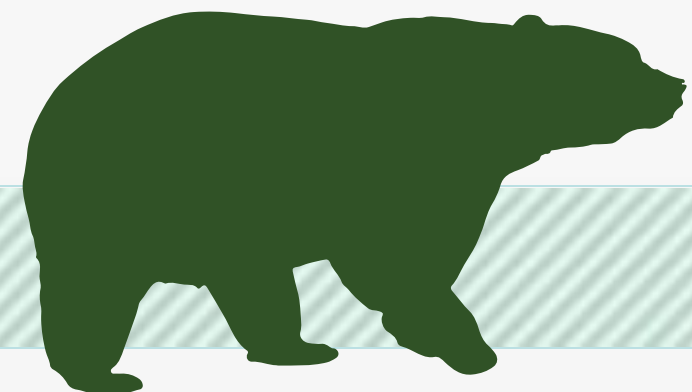
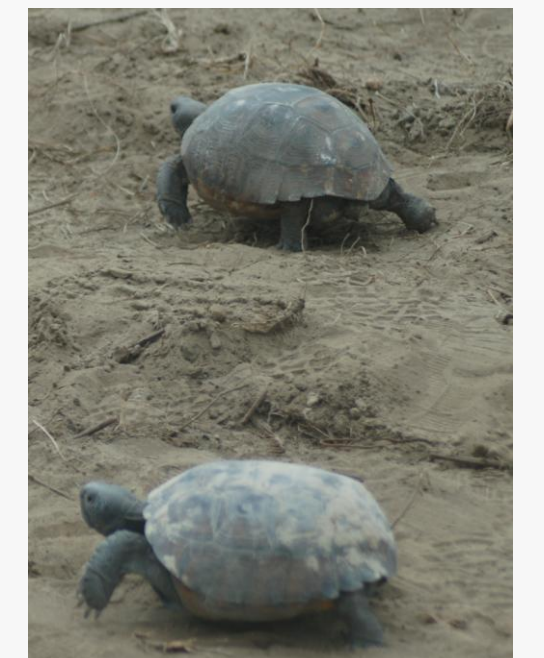
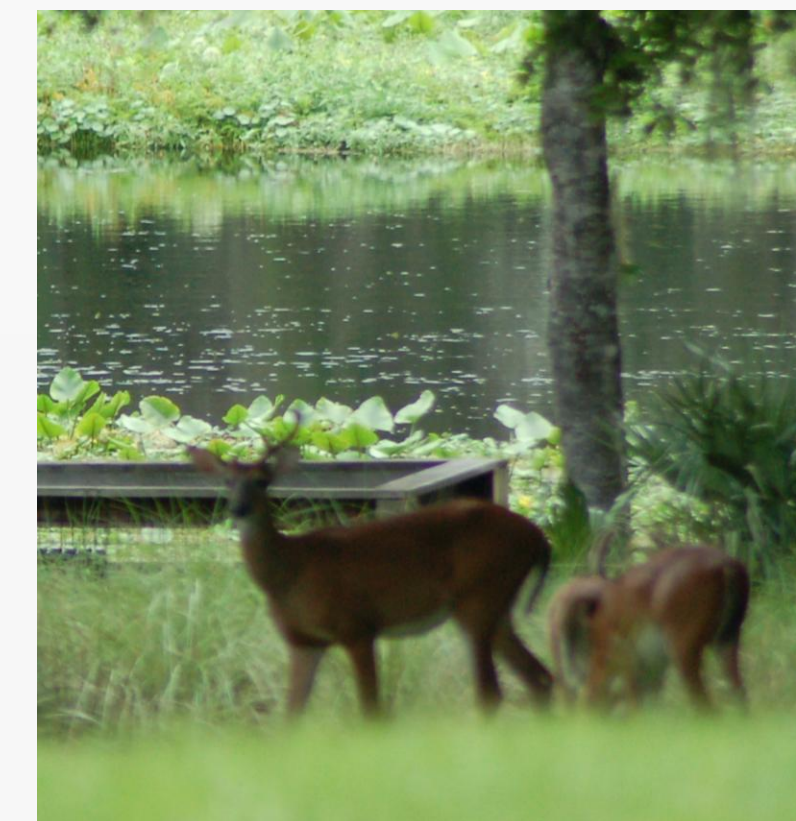
## Project Description

- **\$1.7 Billion Completion of Central Florida's Beltway**
- **25-mile Toll Road**
- **Non-Toll Road Improvements:**
  - **4- and 6-Laning about 7 Miles of SR 46 in Lake and Seminole Counties**
  - **Rebuilding the US 441/SR 46 Interchange in Mount Dora**
  - **Relocating CR 46A to Improve Wildlife Connectivity**
  - **Parallel Service Roads in East Lake and Seminole Counties**
- **Connectivity to SR 417 and I-4 Corridors**



## Protecting Nature

- **Wekiva River: Outstanding Florida Water & National Wild & Scenic River**
- **Authorized by the 2004 Wekiva Parkway and Protection Act**
  - **Setting Aside More than 3,400 Acres for Conservation**
  - **Largely Elevated to Reduce Accidents Between Vehicles & Wildlife**
  - **Several Wildlife Bridges**



# WEKIVA PARKWAY



**LEGEND**

- Existing OCEEA System
- Future OCEEA Segments (Under Design)
- OCEEA Toll Facility
- Florida's Turnpike System
- Future Florida's Turnpike Segments
- Wekiva Parkway PD&E
- Under Construction



# PROJECT ECONOMIC IMPACT

At an estimated cost of \$1.7 Billion for Engineering & Construction, the Wekiva Parkway is Projected to Provide:

Construction Related Jobs	11,536
Supporting Industries Jobs	5,236
Induced Employment Jobs	16,905

**\*Estimated Total Jobs 33,677**

\*Job Multiplier Source: Federal Highway Administration (FHWA) Employment Impacts of Highway Infrastructure Investment; Updated March 2010

# Project Sections



# WEKIVA PARKWAY

Completing Central Florida's Beltway



**3B**  
238275-2

**3A**  
238275-3

**5**  
238275-8

**6**  
238275-7

**7B\***  
240200-3

**4B\***  
238275-6

**2C**  
429-206

**2B**  
429-204

**7A**  
240200-2

**8\***  
240200-4

**4A\***  
431163-5

**2A**  
429-205

**1B**  
429-203

**1A**  
429-202

**FDOT/TPK SECTION**  
\* Indicates Design Build

**OCEA SECTION**



LAKE APOPKA RESTORATION AREA

SR 429/SR 414 JOHN LAND APOPKA EXPRESSWAY (UNDER CONSTRUCTION)



Casselberry

Altamonte Springs

Longwood

Lake Mary

Sanford

BLACK BEAR WILDERNESS AREA

LOWER WEKIVA RIVER PRESERVE STATE PARK

SEMINOLE STATE FOREST

SEMINOLE WOODS

WEKIVA RIVER MITIGATION BANK

ROCK SPRINGS RUN STATE RESERVE

WEKIVA SPRINGS STATE PARK

NORTHWEST RECREATION COMPLEX

WOLF BRANCH SINK PRESERVE

Sorrento

Mt. Plymouth

Mount Dora

St. Johns River

Lake Monroe

Lake Ola

Lake Apopka

ORANGE COUNTY LINE

SEMINOLE COUNTY LINE

LAKE COUNTY LINE

SEMINOLE COUNTY LINE

LAKE COUNTY LINE

ORANGE COUNTY LINE

46A COUNTY

46

46A COUNTY

46

437 COUNTY

435 COUNTY

251 COUNTY

435 COUNTY

ROUND LAKE RD  
SADLER RD  
PONYKAN RD  
LAUGHLIN RD

PLYMOUTH-SORRENTO RD

HAAS RD

KELLY PARK RD

ROCK SPRINGS RD

WELCH RD

VICK RD

PIEDMONT WEKIVA RD

WEKIVA SPRINGS RD

RINEHART RD

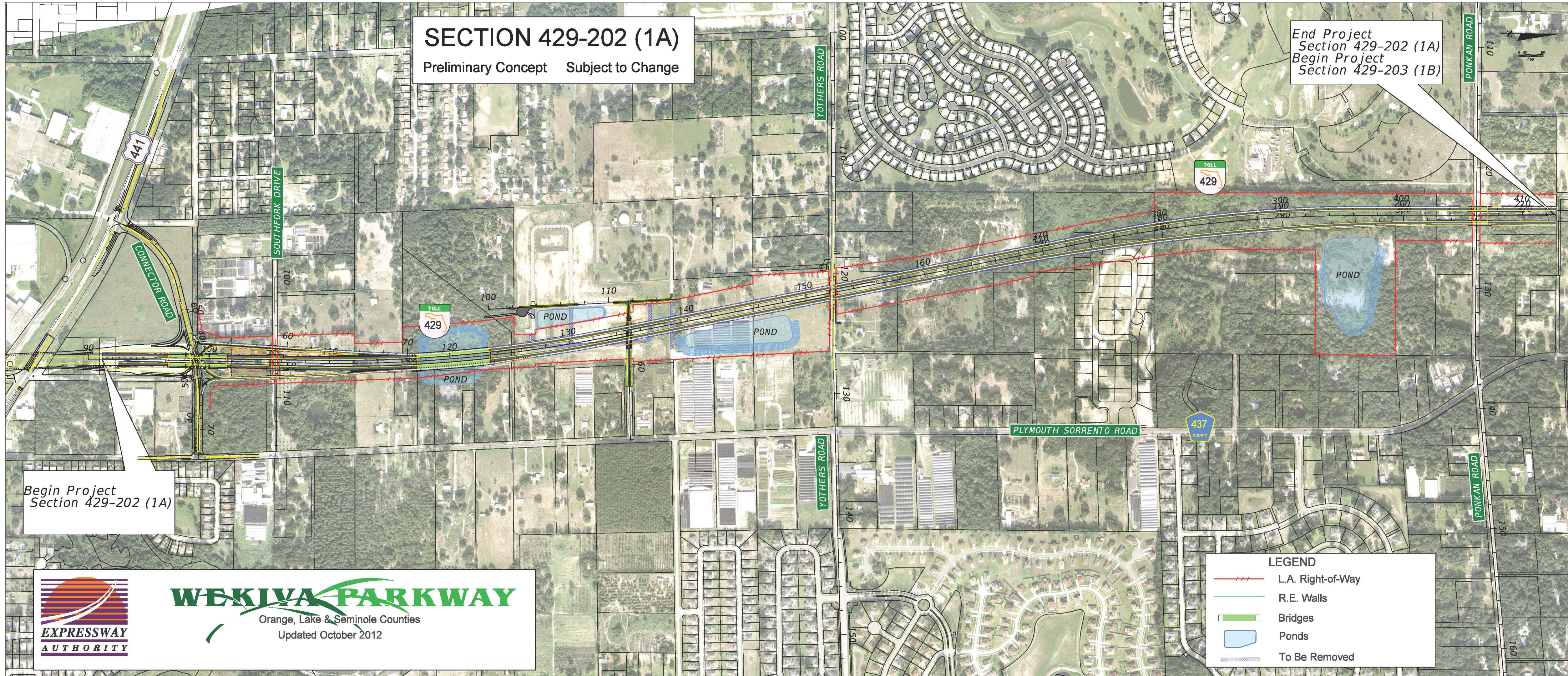
LAKE MARY BLVD

# Expressway Authority Sections





# Section 1A



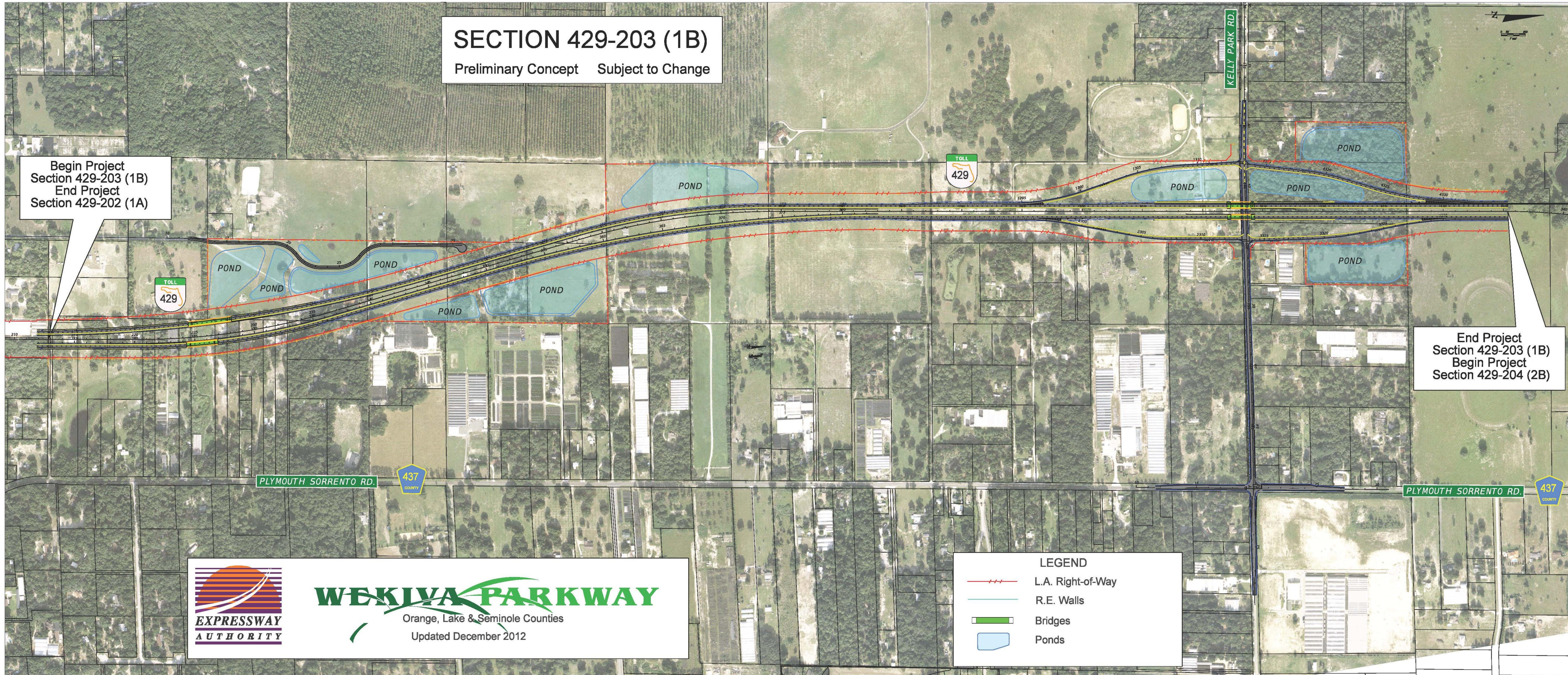
# Section 1B

## SECTION 429-203 (1B)

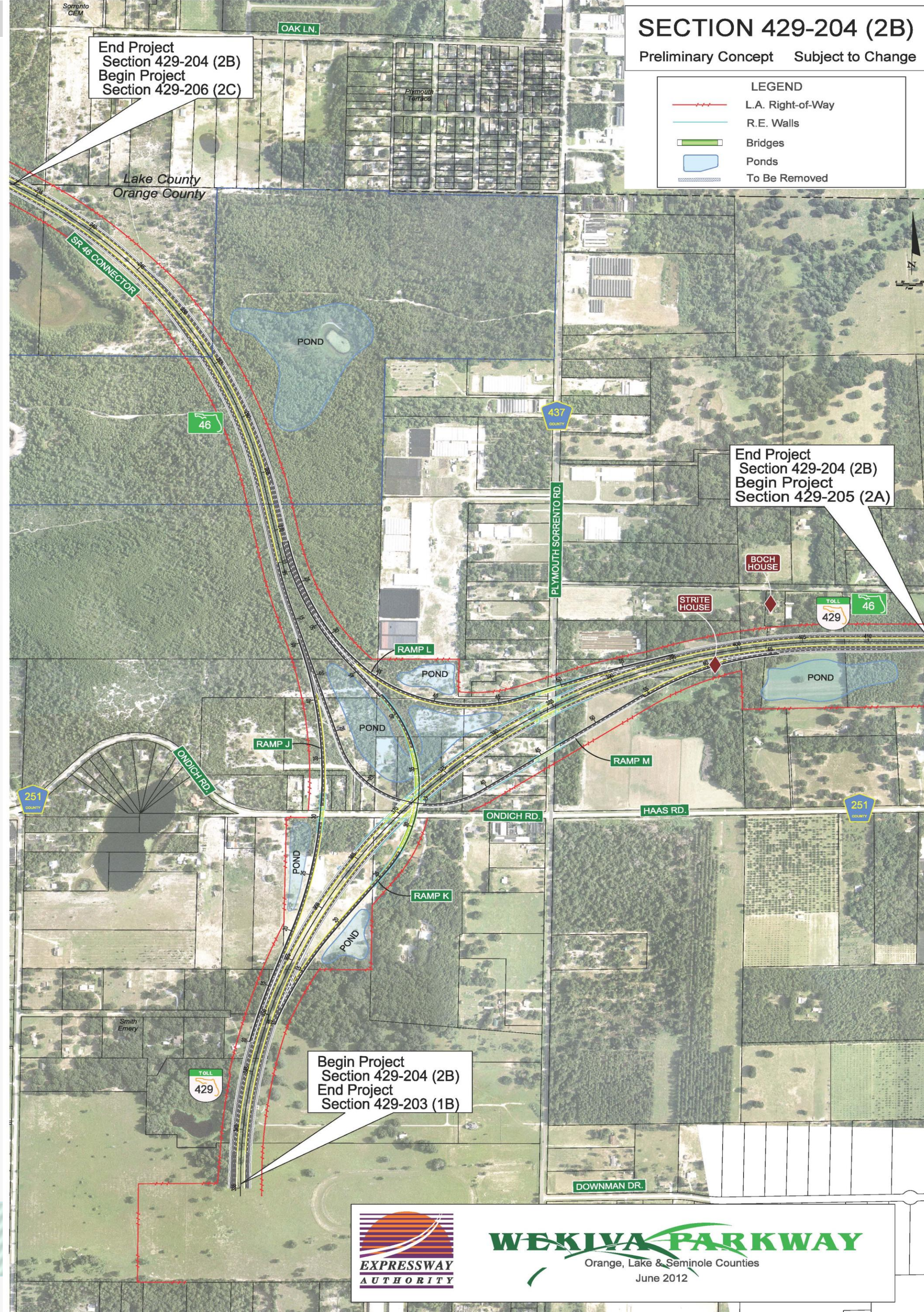
Preliminary Concept Subject to Change

Begin Project  
Section 429-203 (1B)  
End Project  
Section 429-202 (1A)

End Project  
Section 429-203 (1B)  
Begin Project  
Section 429-204 (2B)



# Section 2B



**WEKIIVA PARKWAY**

**WEKIIVA PARKWAY**  
 Orange, Lake & Seminole Counties  
 June 2012

**EXPRESSWAY AUTHORITY**

# Section 2A



## WEKIYA PARKWAY

Orange, Lake & Seminole Counties  
June 2012

### SECTION 429-205 (2A)

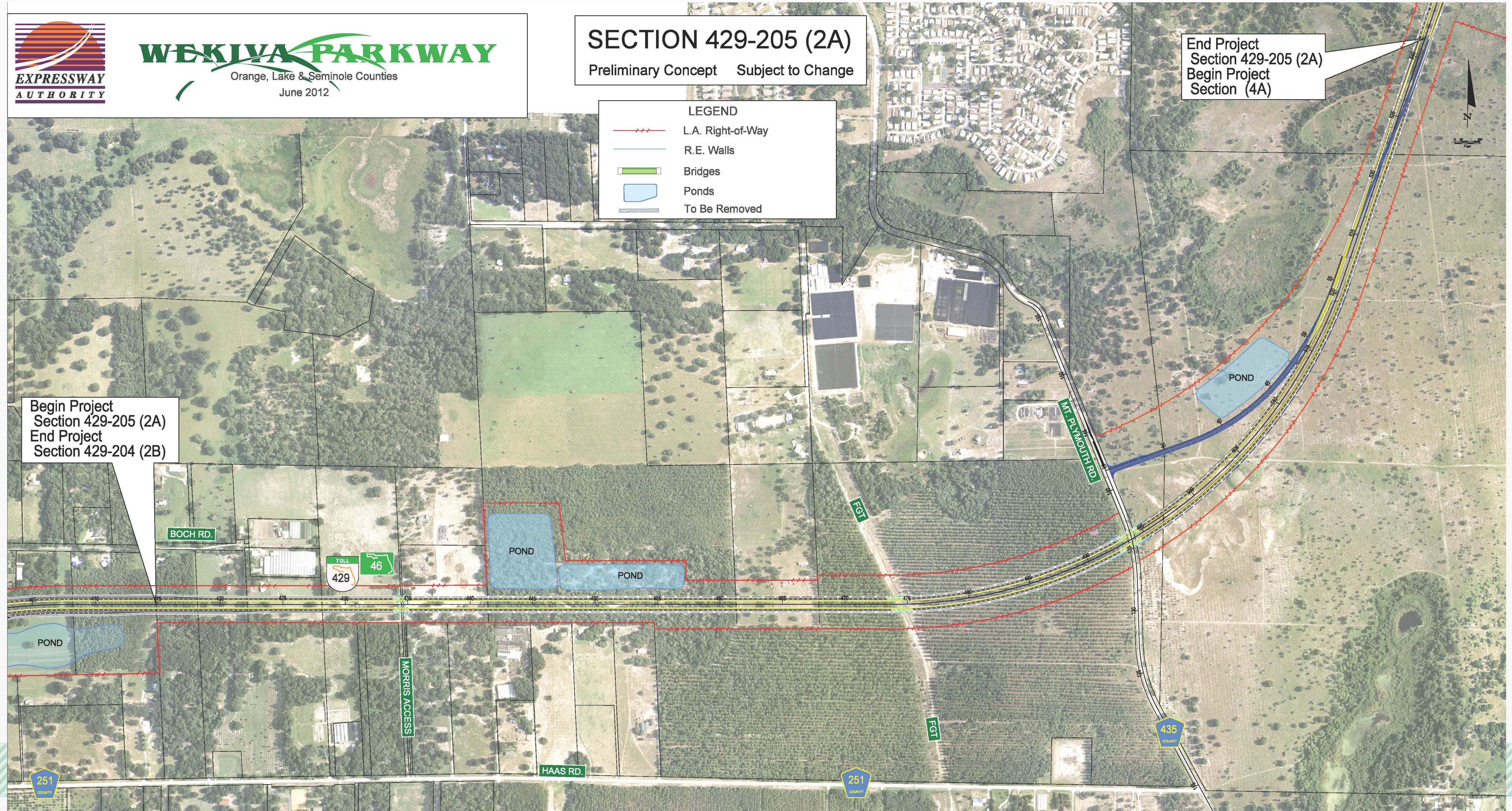
Preliminary Concept Subject to Change

#### LEGEND

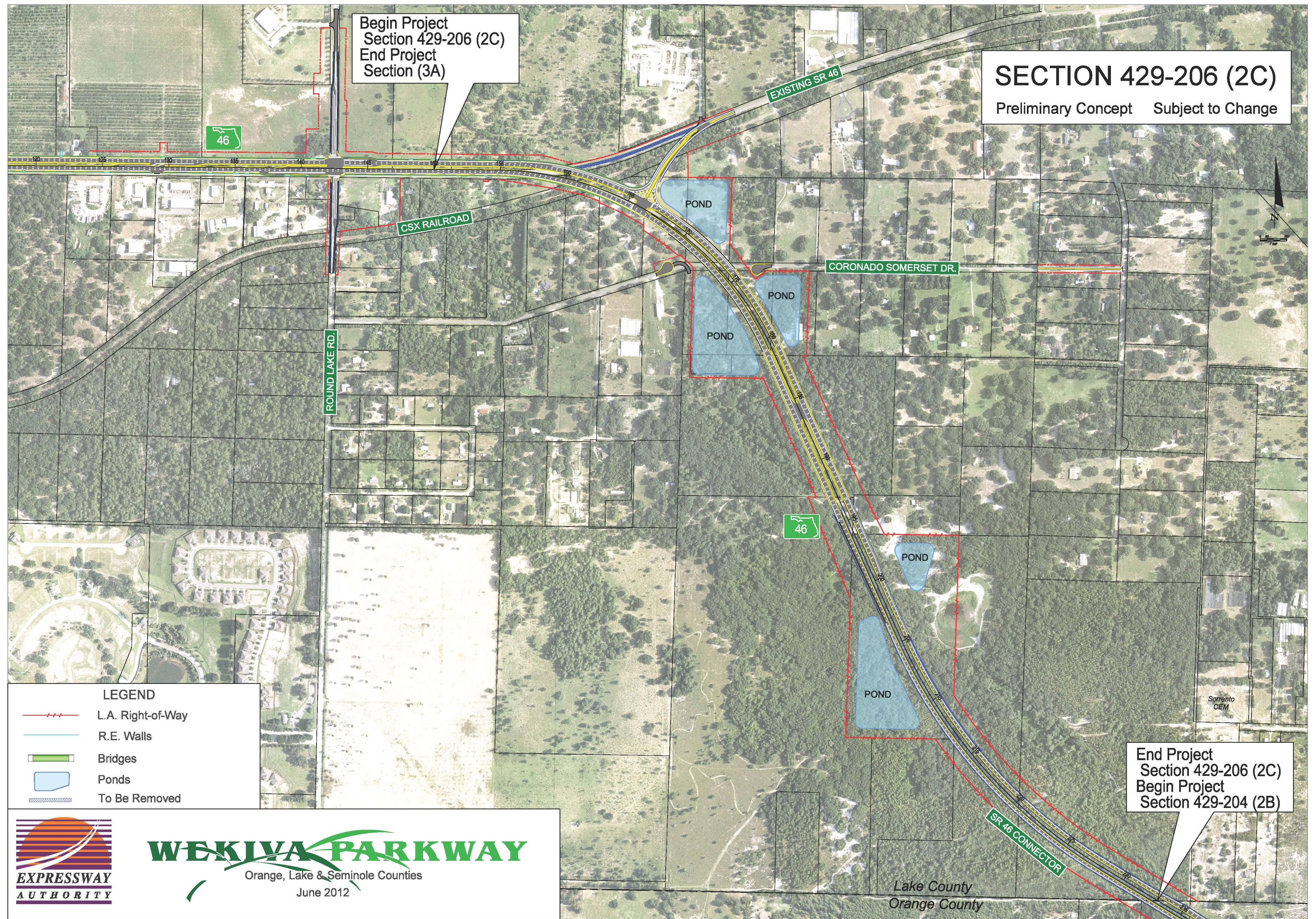
- L.A. Right-of-Way
- R.E. Walls
- Bridges
- Ponds
- To Be Removed

End Project  
Section 429-205 (2A)  
Begin Project  
Section (4A)

Begin Project  
Section 429-205 (2A)  
End Project  
Section 429-204 (2B)



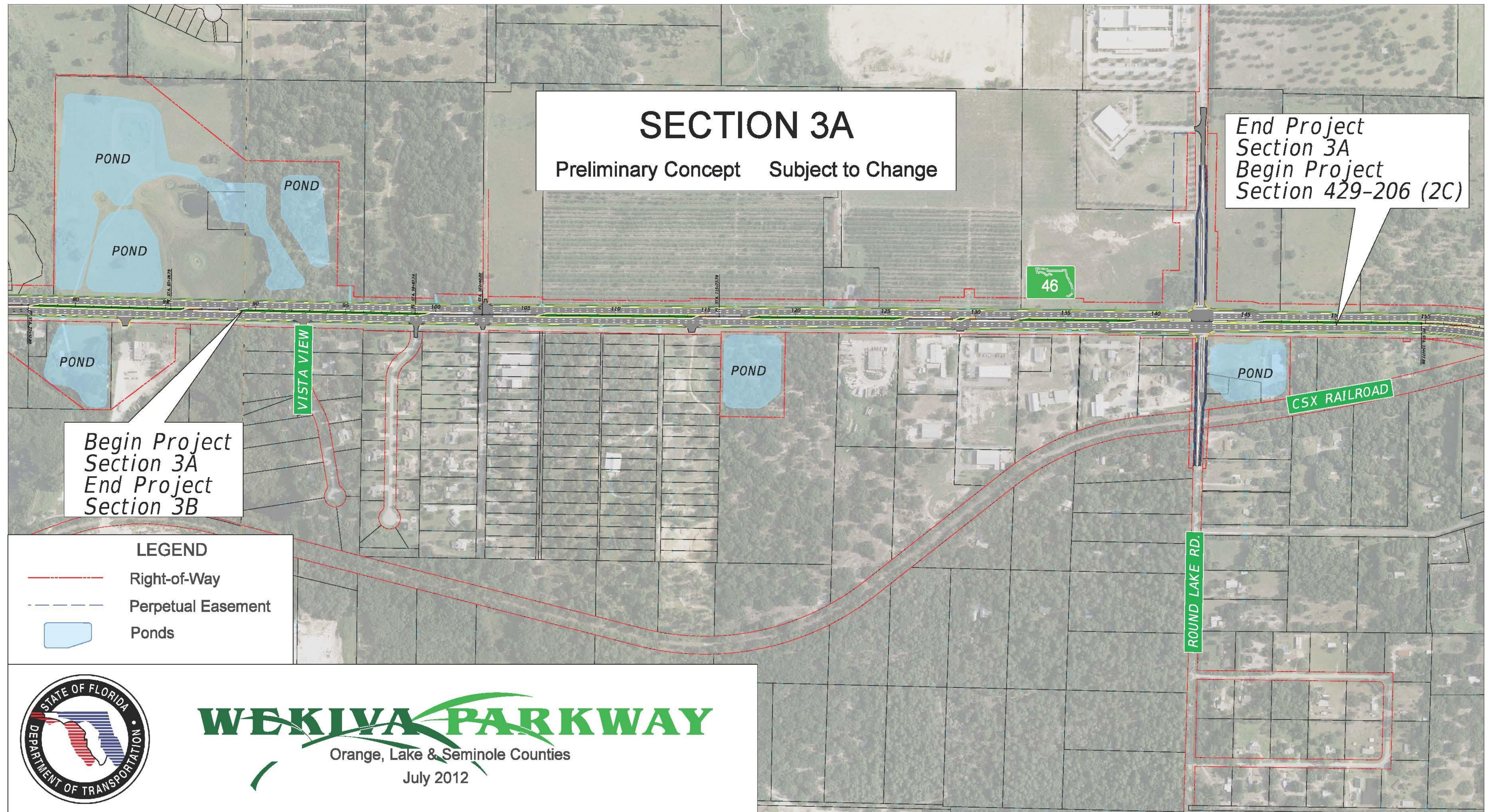
# Section 2C



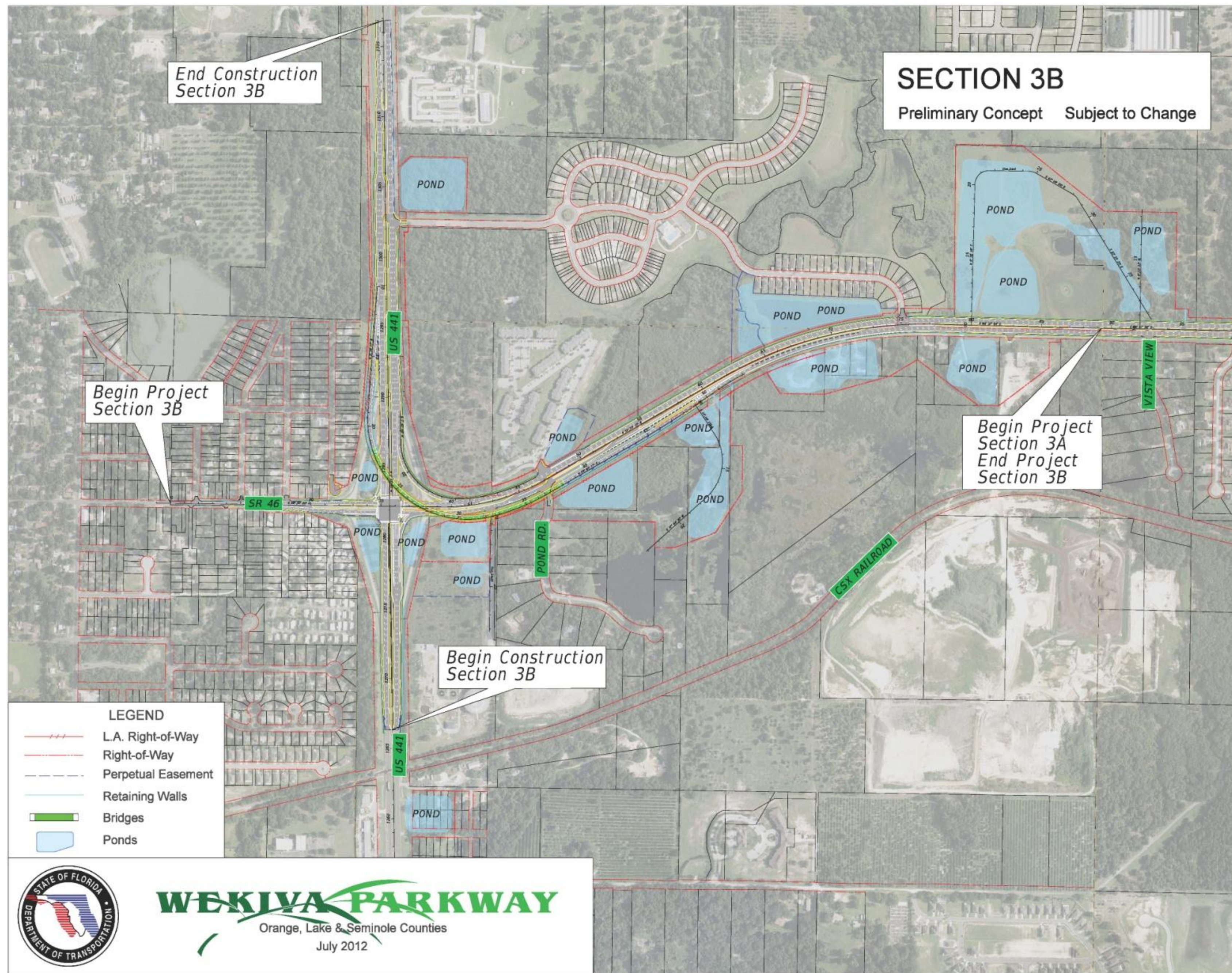
# FDOT Sections



# Section 3A



# Section 3B

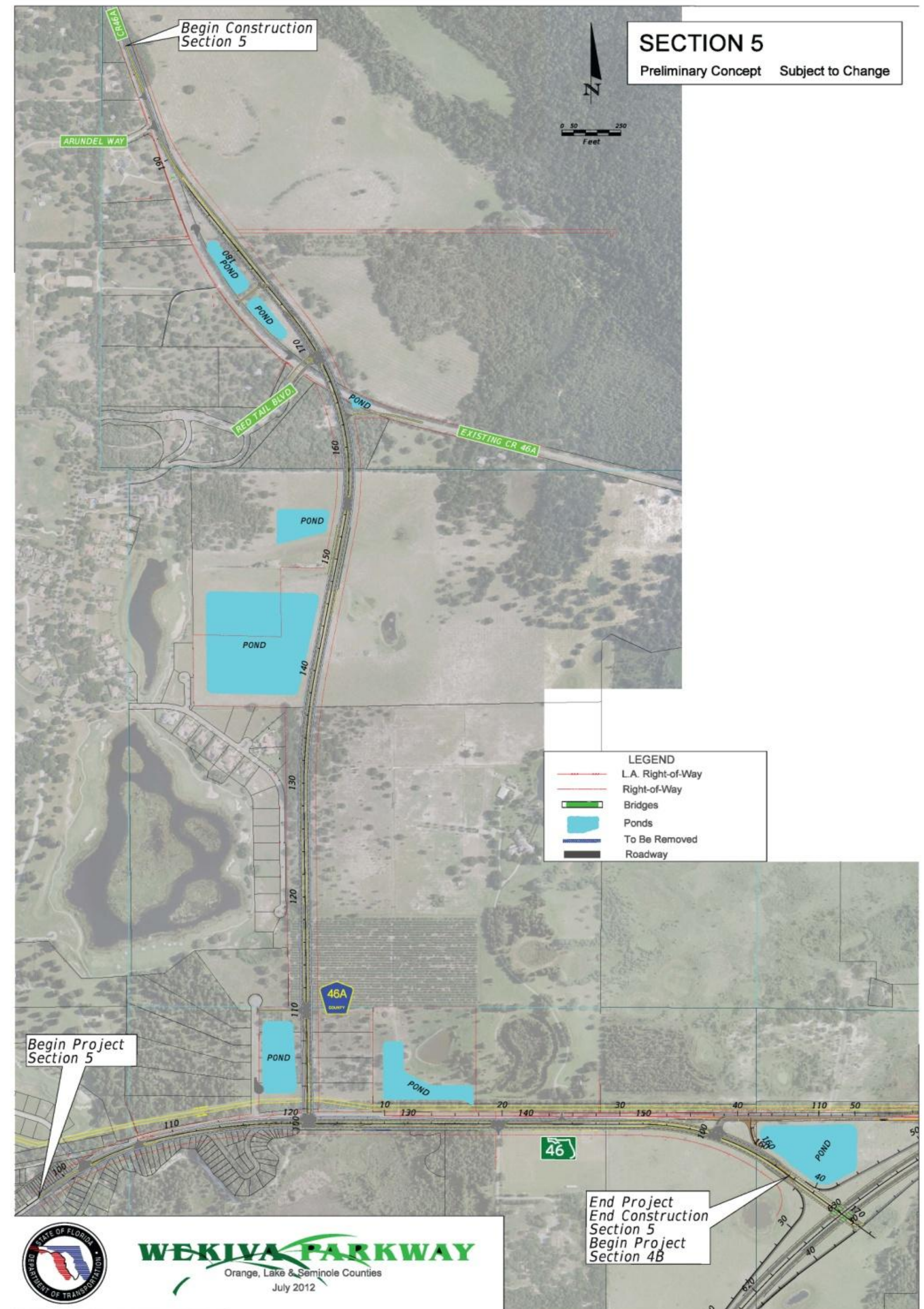




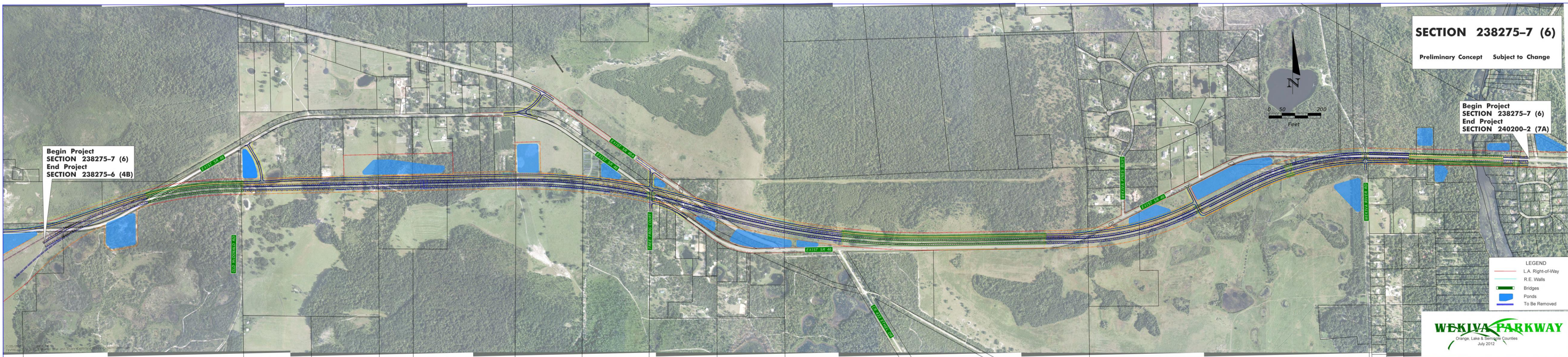
# Section 4A & 4B



# Section 5



# Section 6



**SECTION 238275-7 (6)**

Preliminary Concept Subject to Change

Begin Project SECTION 238275-7 (6)  
End Project SECTION 240200-2 (7A)

Begin Project SECTION 238275-7 (6)  
End Project SECTION 238275-6 (4B)

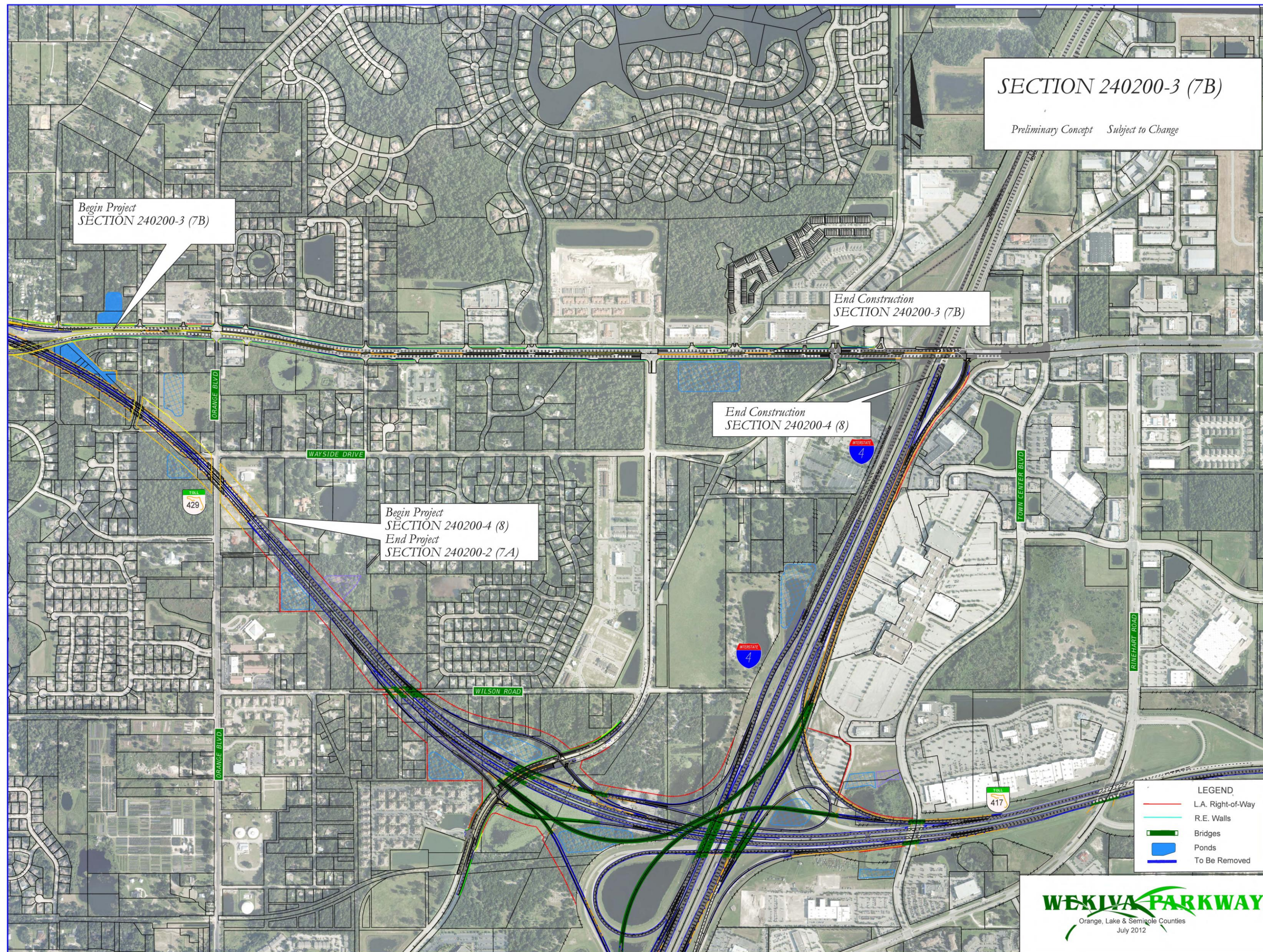
- LEGEND
- L.A. Right-of-Way
- R.E. Walls
- Bridges
- Ponds
- To Be Removed



# Section 7A



# Sections 7B & 8



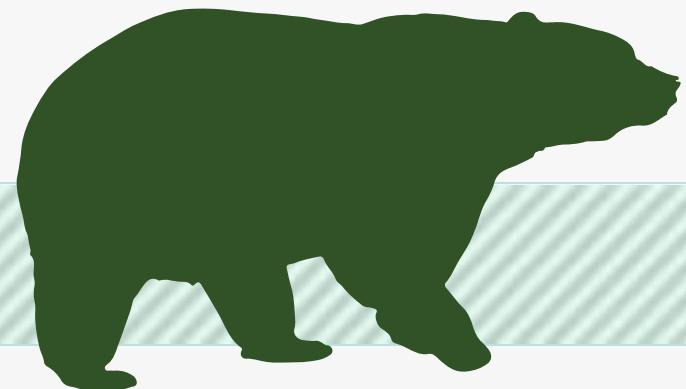
# Project Status

## Final Design

- OOCEA Sections 1A, 1B – 60% complete plans Feb. 2013
- OOCEA Section 2A – 60% complete plans April 2013
- OOCEA Section 2B – 30% complete plans March 2013
- OOCEA Section 2C – 30% complete plans May 2013
  
- FDOT Section 3A – Design begins May-June 2013
- FDOT Section 3B – Design to reach 30% plans Apr.-May 2013
- FDOT Section 5 – Design started Feb. 25, 2013
- FDOT Section 6 – Design starts March-Apr. 2013
- FDOT Section 7A – Design starts June-July 2013

## Construction

- FDOT Section 4A & 4B – Clearing & grubbing started Feb. 18
- **Wekiva Parkway Complete - Fall 2021**



# What's Next?

- **Final Design Underway**
- **Continued community coordination**
- **Opportunities for Community Input**
  - ✓ **Public Meetings: Section 1 - March 21, 2013 at 6 p.m.**  
Apopka High School, 555 W. Martin St.
  - ✓ **Community Presentations**
  - ✓ **Updates & Comments via Website: [www.wekivaparkway.com](http://www.wekivaparkway.com)**
- **First Section (4A & 4B) Open to Traffic – Late 2014**



## For More Information:

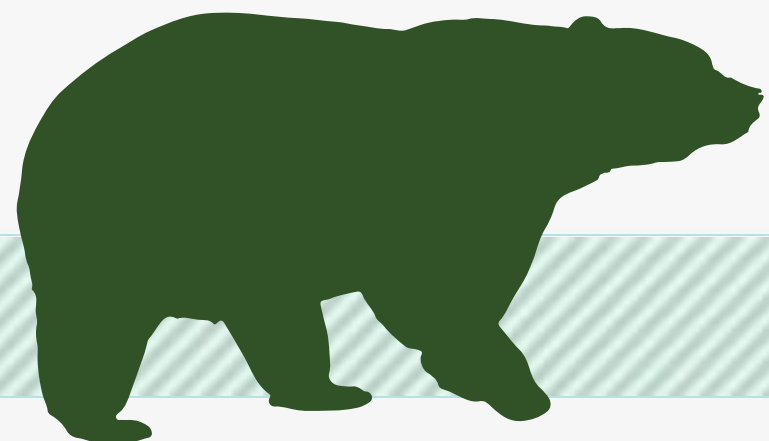
### Mary Brooks

### Public Involvement Coordinator

### C: 407-694-5505

### E: [Info@wekivaparkway.com](mailto:Info@wekivaparkway.com)

### W: [www.wekivaparkway.com](http://www.wekivaparkway.com)



The screenshot shows the Wekiva Parkway website homepage. At the top, the logo reads "WEKIVA PARKWAY Completing Central Florida's Beltway" with a "TOLL 429" icon. Navigation links include HOME, FDOT PROJECTS, OOCEA PROJECTS, PROJECTS BY COUNTY, PROJECT HISTORY, and CONTACT US. The main content area features a "WELCOME" section with a message from the Florida Department of Transportation and the Orlando-Orange County Expressway Authority, followed by a list of project details. Below this is a "WEKIVA PARKWAY PROJECT SECTION MAP" with a legend for "FOOT/TPK SECTION" and "OOCEA SECTION". The map displays various project sections (1A through 8) across a geographic area. On the right side, there is a "LATEST NEWS" section with several news items dated from May 2012 to October 2012, and a "PROJECT DOCUMENTS" section with links for presentations, press releases, and public meeting notices. A small image of a wetland is visible in the news section.

twitter

facebook



# WEKIWA PARKWAY

Completing Central Florida's Beltway



**Thank You!**  
**Questions?**

