



## A Regional Transportation Solution

**East Lake – NW Orange County  
Elected Officials Committee  
July 23, 2015**





## Project Description

- **\$1.6 Billion Completion of Central Florida's Beltway**
- **25-mile Toll Road**
- **Non-Toll Road Improvements:**
  - **Improving SR 46 in Lake & Seminole Counties**
  - **Parallel Service Roads in East Lake & Seminole Counties**
- **Protecting Nature:**
  - **Conservation: 3,400 Acres**
  - **Moving CR 46A Out of State Forest**
  - **Wildlife Bridges**
  - **Limited Interchanges**
- **10-mile Multi-use Trail (Parts of East Lake & Seminole Counties)**
- **First in Central Florida: All Electronic Tolling (AET)**

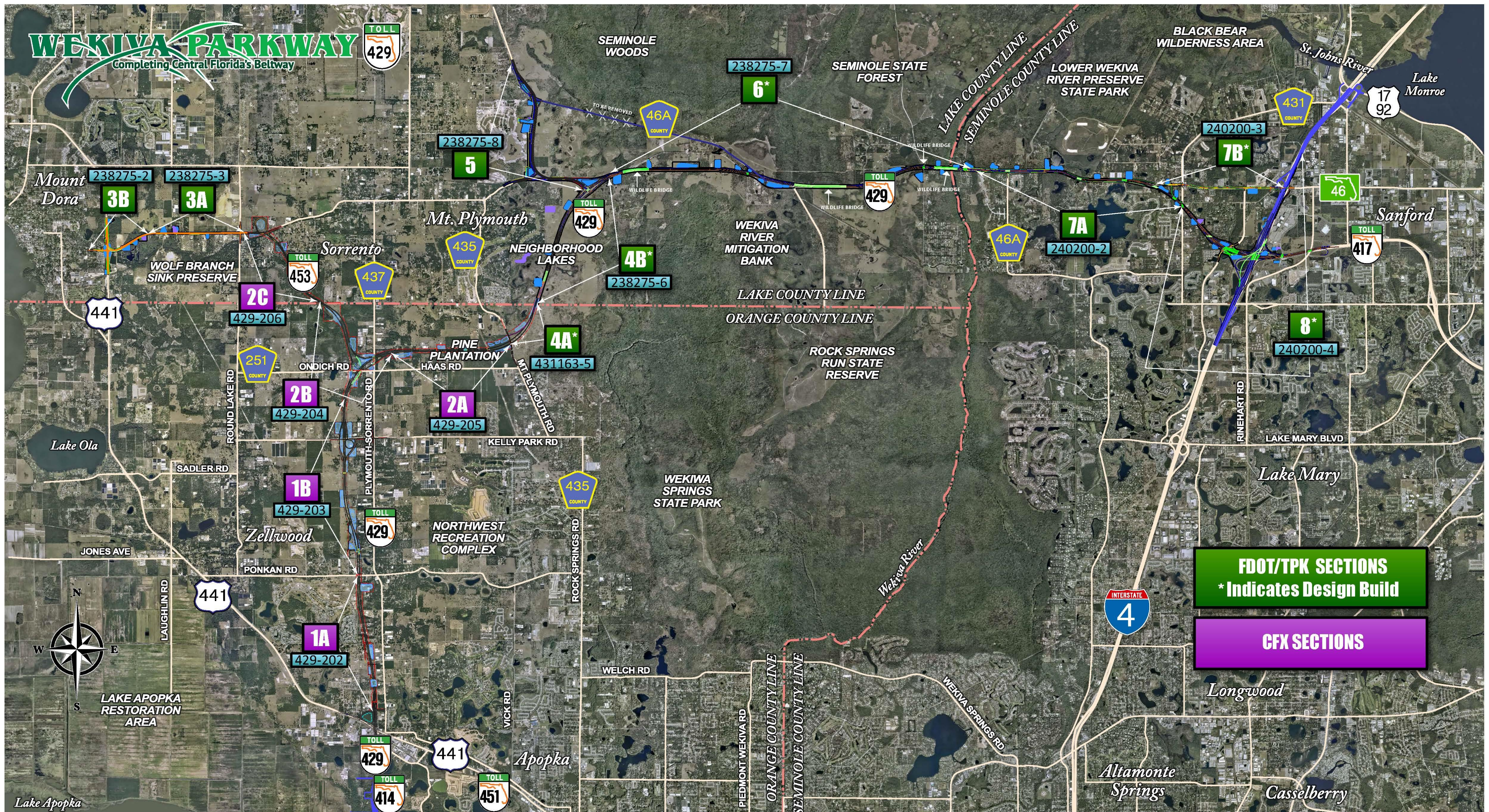
CENTRAL  
FLORIDA  
EXPRESSWAY  
AUTHORITY





# WEKIVA PARKWAY

Completing Central Florida's Beltway



**FDOT/TPK SECTIONS**  
\* Indicates Design Build

**CFX SECTIONS**

Lake Apopka

LAKE APOPKA RESTORATION AREA



Altamonte Springs

Casselberry

Longwood

Lake Mary

Sanford

Lake Monroe

BLACK BEAR WILDERNESS AREA

LOWER WEKIVA RIVER PRESERVE STATE PARK

SEMINOLE STATE FOREST

SEMINOLE WOODS

ROCK SPRINGS RUN STATE RESERVE

WEKIWA SPRINGS STATE PARK

LAKE COUNTY LINE  
ORANGE COUNTY LINE

WEKIVA RIVER MITIGATION BANK

NEIGHBORHOOD LAKES

Mt. Plymouth

WOLF BRANCH SINK PRESERVE

Mount Dora

St. Johns River

Sorrento

Zellwood

Apopka

WEKIWA SPRINGS RD

ORANGE COUNTY LINE  
SEMINOLE COUNTY LINE

ROCK SPRINGS RD

KELLY PARK RD

MT. PLYMOUTH RD

PINE PLANTATION HAAS RD

ONDICH RD

PLYMOUTH-SORRENTO RD

SADLER RD

JONES AVE

LAUGHLIN RD

PONKAN RD

VICK RD

WELCH RD

LAKE MARY BLVD

RINEHART RD

TOLL 417

TOLL 17 92

431 COUNTY

46

46A COUNTY

46A COUNTY

437 COUNTY

435 COUNTY

251 COUNTY

441

TOLL 429

441

TOLL 451

TOLL 414

TOLL 429

TOLL 453

TOLL 429

TOLL 429

INTERSTATE 4

3B

3A

2C

2B

1B

1A

5

4B\*

4A\*

6\*

7B\*

7A

8\*

238275-8

238275-6

431163-5

238275-7

240200-3

240200-2

240200-4

238275-2

238275-3

429-206

429-204

429-203

429-202

435

435

251

441

TOLL 429

441

TOLL 451

TOLL 414

TOLL 429

TOLL 453

TOLL 429

TOLL 429

INTERSTATE 4

3B

3A

2C

2B

1B

1A

5

4B\*

4A\*

6\*

7B\*

7A

8\*

238275-8

238275-6

431163-5

238275-7

240200-3

240200-2

240200-4

238275-2

238275-3

429-206

429-204

429-203

429-202

435

435

251

441

TOLL 429

441

TOLL 451

TOLL 414

TOLL 429

TOLL 453

TOLL 429

TOLL 429

INTERSTATE 4

3B

3A

2C

2B

1B

1A

5

4B\*

4A\*

6\*

7B\*

7A

8\*

238275-8

238275-6

431163-5

238275-7

240200-3

240200-2

240200-4

238275-2

238275-3

429-206

429-204

429-203

429-202

435

435

251

441

TOLL 429

441

TOLL 451

TOLL 414

TOLL 429

TOLL 453

TOLL 429

TOLL 429

INTERSTATE 4



# Central Florida Expressway Authority Sections





# CFX Sections 1A & 1B Update

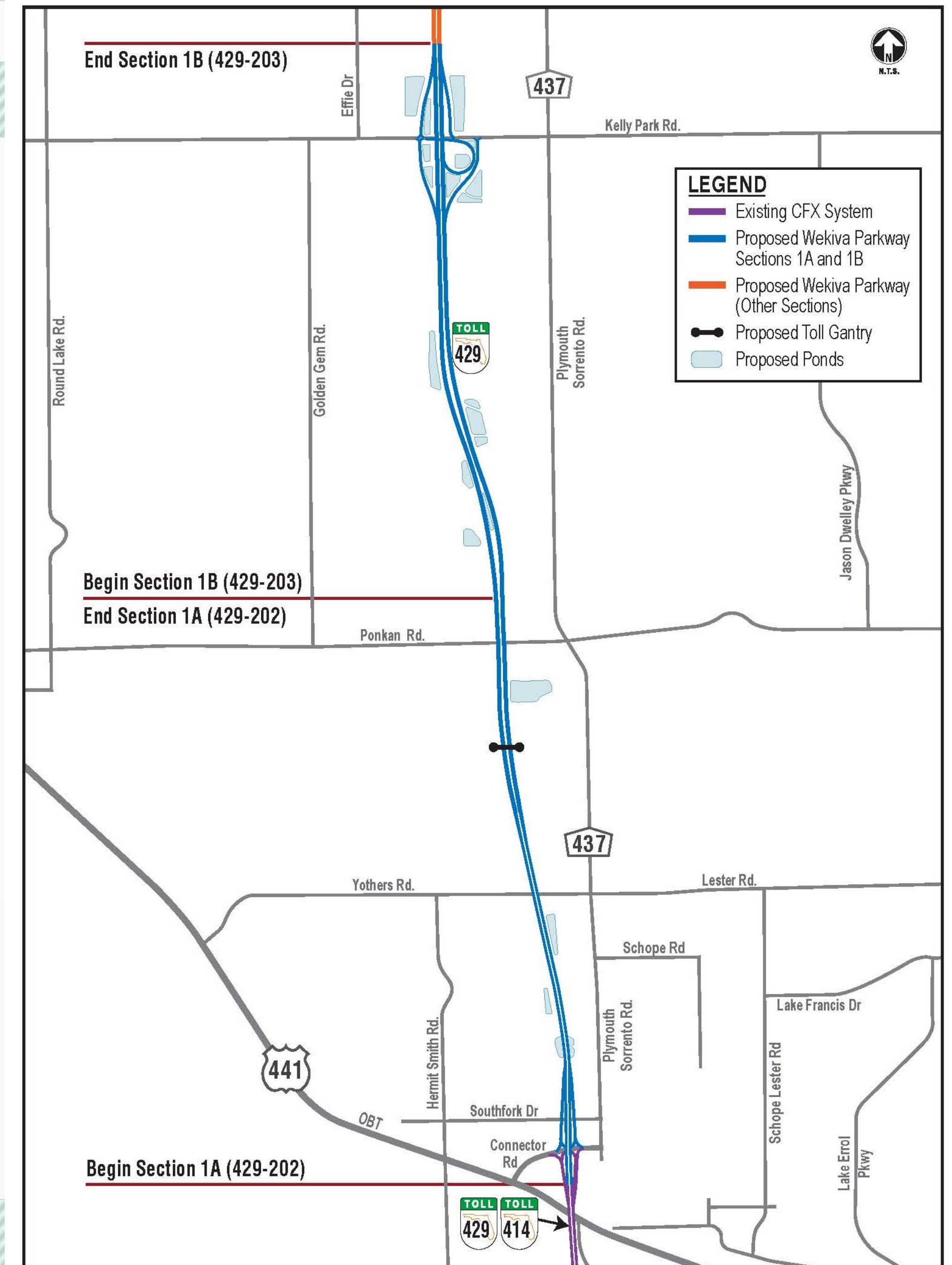
## Section 1A

- Construction Start: June 8, 2015
- US 441 / Connector Rd. to Ponkan Rd.
- Contractor: Prince; CEI: RK&K

## Section 1B

- Construction Start: Aug. 3, 2015
- Ponkan Rd. to Kelly Park Rd. Interchange
- Contractor: Superior Construction; CEI: GAI

**Completion: Spring 2017**





# Section 1A

Crews carefully excavate and relocate gopher tortoises.

Number Relocated:  
191  
(July 9, 2015)

Burrows Excavated:  
380

Completion: Aug 7



**WEKIYA PARKWAY**  
Completing Central Florida's Beltway





# Section 1A

Clearing north of the SR  
429/414 Connector Road near  
US 441





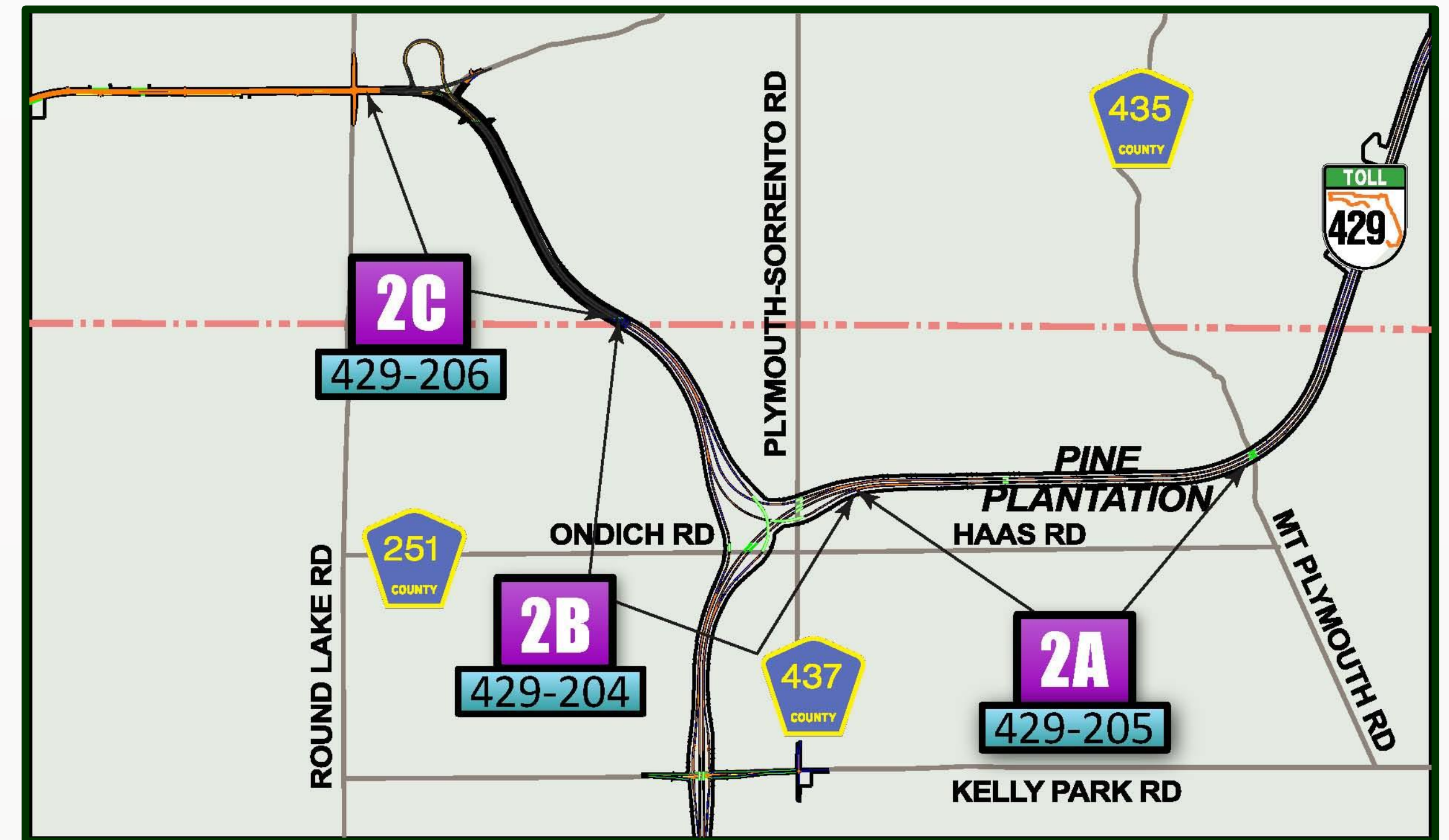
# Section 1A





# CFX Sections 2A, 2B & 2C Update

- ✓ Design Complete: 2015
- ✓ Section 2B:
  - ✓ CEI Selected: A Squared
  - ✓ Contractor Ad: Aug. 2015
  - ✓ Construction Start: Jan. 1, 2016
- ✓ Section 2C
  - ✓ CEI Procurement: Aug.-Sept. 2015
  - ✓ Contractor Ad: Dec. 2015
  - ✓ Construction Start: Apr. 1, 2016
- ✓ Section 2A
  - ✓ CEI Procurement: Aug.-Sept. 2015
  - ✓ Contractor Ad: Dec. 2015
  - ✓ Construction Start: May 1, 2016



- ✓ **Pre-Construction Public Meeting:**  
September 2015

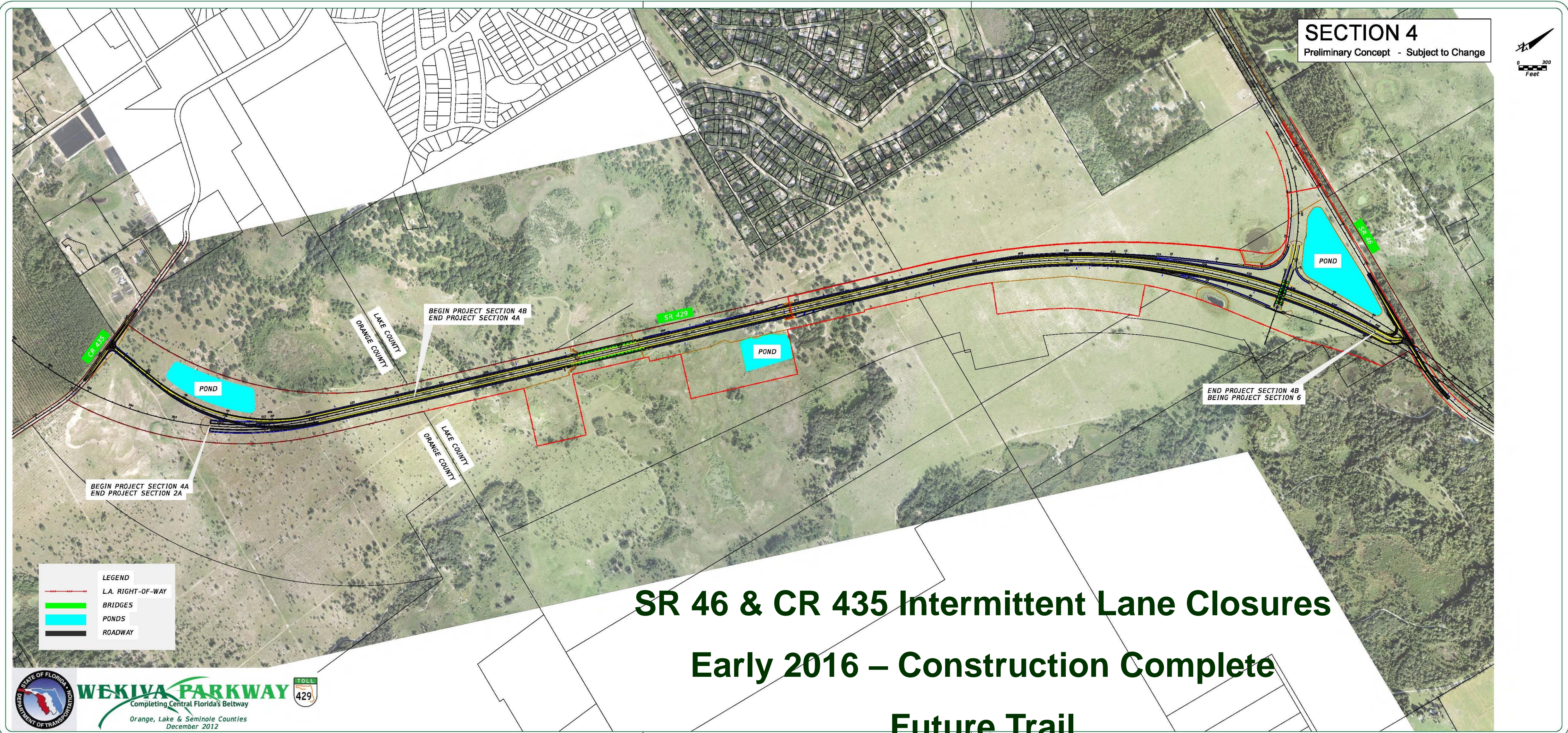


# FDOT Sections





# Section 4A & 4B





# Sections 4A & 4B



Pavement, street lights and wildlife fencing on Section 4A near CR 435 (Mt Plymouth Road)





# Sections 4A & 4B



## Wildlife Jump Out & Bridge Work Near SR 46





# Sections 4A & 4B





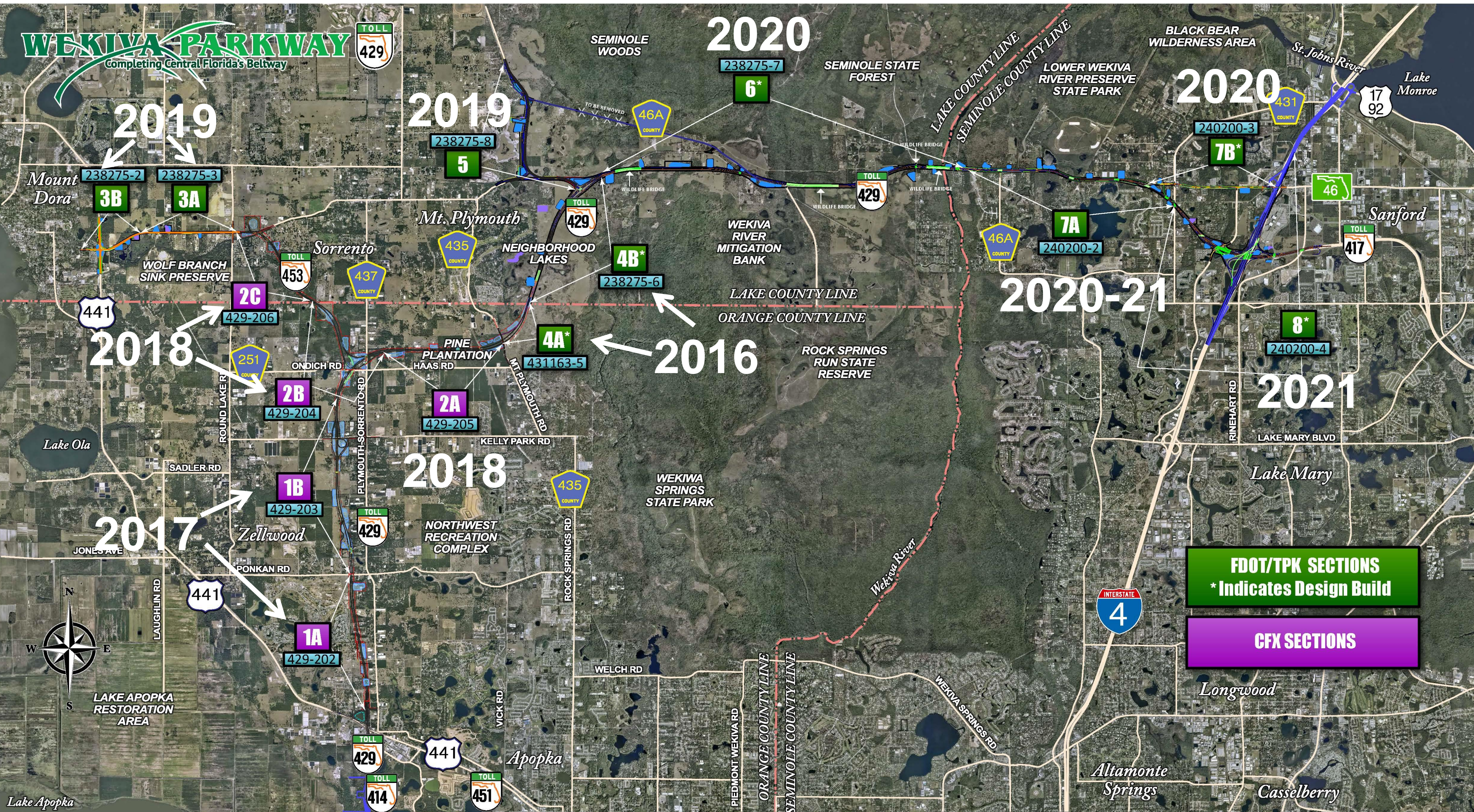
# Sections 4A & 4B





# WEKIWA PARKWAY

Completing Central Florida's Beltway



**FDOT/TPK SECTIONS**  
\* Indicates Design Build

**CFX SECTIONS**

Lake Apopka

LAKE APOPKA RESTORATION AREA



Altamonte Springs

Casselberry

Longwood

Lake Mary

LAKE MARY BLVD

2021

2020-21

2016

2018

2017

2018

2019

2019

2020

2020

2020

Mount Dora

WOLF BRANCH SINK PRESERVE

ROUND LAKE RD

LAUGHLIN RD

JONES AVE

PONKAN RD

Zellwood

429-202

1A

429-203

1B

429-204

2B

429-205

2A

429-206

2C

ONDICH RD

437

435

431

430

429

428

427

426

425

424

423

422

421

420

419

418

417

416

Mt. Plymouth

435

437

439

441

443

445

447

449

451

453

455

457

459

461

463

465

467

469

NEIGHBORHOOD LAKES

435

437

439

441

443

445

447

449

451

453

455

457

459

461

463

465

467

435

437

439

441

443

445

447

449

WELCH RD

429

428

427

426

425

Apopka

429

414

PIEDMONT WEKIWA RD

ORANGE COUNTY LINE

SEMINOLE COUNTY LINE

Wekiwa River

WEKIWA SPRINGS RD

LAKE COUNTY LINE

SEMINOLE COUNTY LINE

LAKE COUNTY LINE

ORANGE COUNTY LINE

LAKE COUNTY LINE

ORANGE COUNTY LINE

LAKE COUNTY LINE

ORANGE COUNTY LINE

LAKE COUNTY LINE

ORANGE COUNTY LINE

LAKE COUNTY LINE

ORANGE COUNTY LINE

LAKE COUNTY LINE

ORANGE COUNTY LINE

LAKE COUNTY LINE

WELCH RD

429

428

427

Altamonte Springs

429

414

451

417

416

415

414

413

412

411

410

409

408

407

406

405

404

403

402

401

400

399

398

397

396

395

394

393

392

391

390

389

388

387

386

385

384

383

382

381

380

379

378

377

376

375

374

373

372

371

370

369

368

367

366

365

364

363

362

361

360

359

358

357

356

355

354

353

352

351

350

349

348

347

346

345

344

343

342

341

340

339

338

337

336

335

334

333

332

331

330

329

328

327

326

325

324

323

322

321

320

319

318

317

316

315

314

313

312

311

310

309

308

307

306

305

304

303

302

301

300

299

298

297

296

295

294

293

292

291

290

289

288

287

286

285

284

283

282

281

280

279

278

277

276

275

274

273



# What's Next?

- **Public Meetings: Section 2 Pre-Construction**  
**Sept. 24, 2015**  
**N.O.C.I.A. Bdg., Ponkan Rd.**  
**5:30 p.m.-7:30 p.m.**



- **Next CFX Section Begins Construction – August 2015**
- **First Section (4A & 4B) Open to Traffic – Early 2016**

Community Presentations

Website Updates: [www.wekivaparkway.com](http://www.wekivaparkway.com)



**For More Information:**

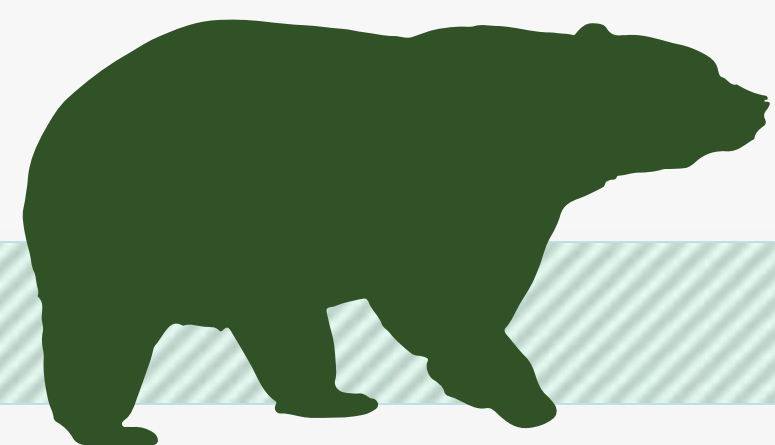
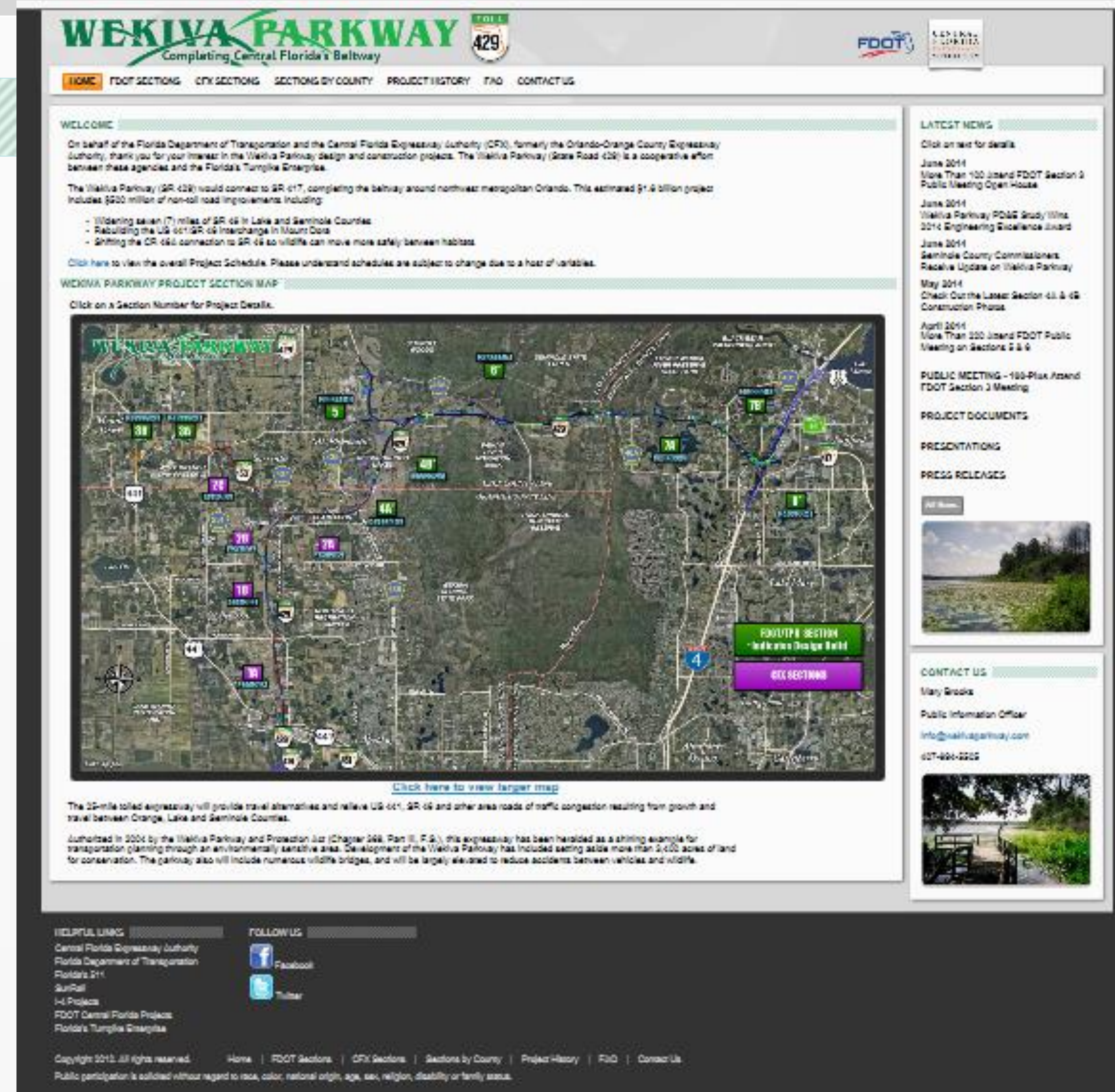
**Mary Brooks**

**Public Information Officer**

**C: 407-694-5505**

**E: [Info@wekivaparkway.com](mailto:Info@wekivaparkway.com)**

**W: [www.wekivaparkway.com](http://www.wekivaparkway.com)**

**WEKIVA PARKWAY**  
Completing Central Florida's Parkway

HOME | FDOT SECTIONS | CFY SECTIONS | SECTIONS BY COUNTY | PROJECT HISTORY | FID | CONTACT US

**WELCOME**

On behalf of the Florida Department of Transportation and the Central Florida Expressway Authority (CFE), formerly the Orlando-Orange County Expressway Authority, thank you for your interest in the Wekiva Parkway design and construction projects. The Wekiva Parkway (State Road 429) is a cooperative effort between these agencies and the Florida's Turnpike Enterprise.

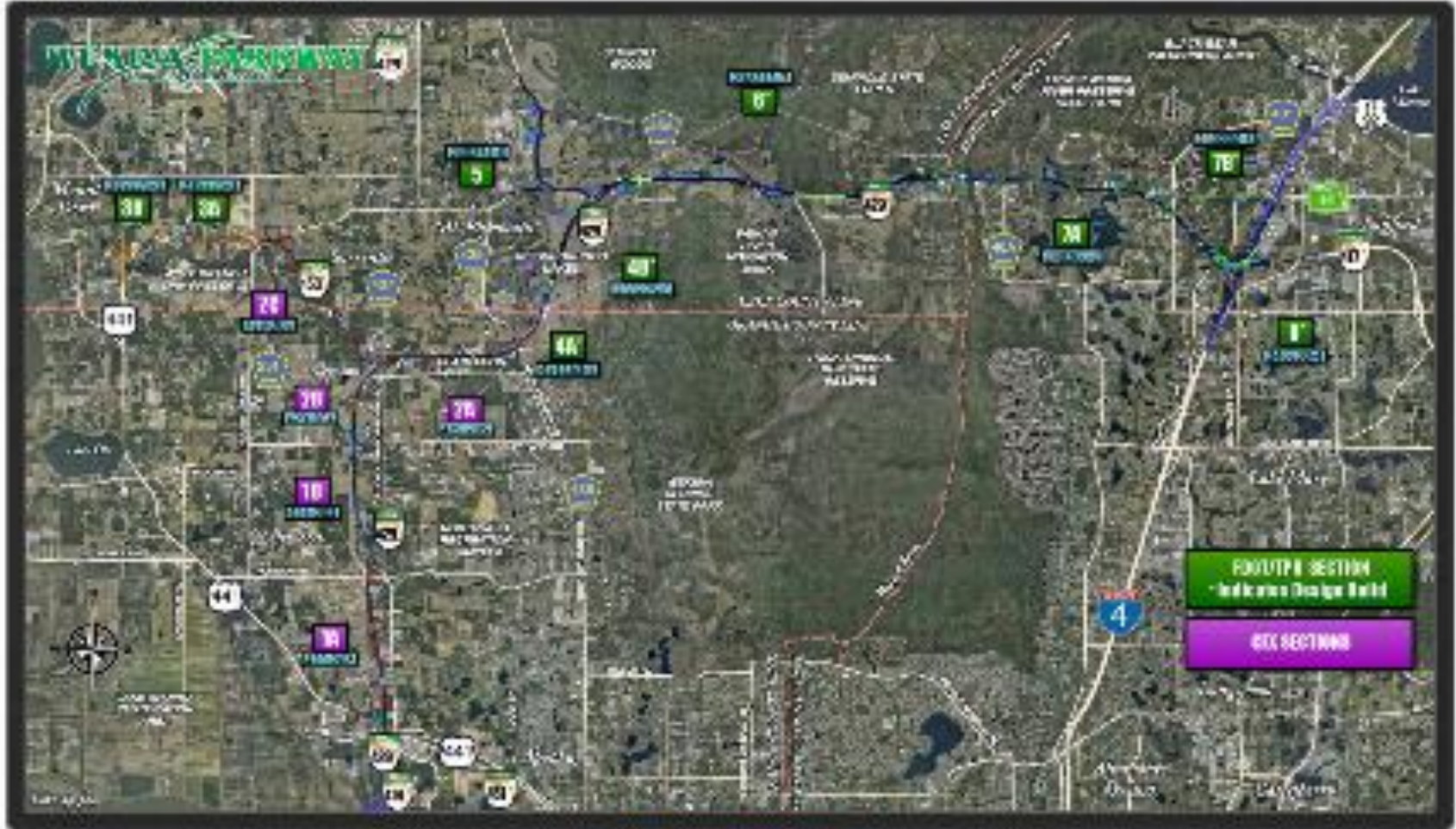
The Wekiva Parkway (SR 429) would connect to SR 417, completing the beltway around northwest metropolitan Orlando. This estimated \$1.4 billion project includes \$200 million of non-toll road improvements including:

- Widening seven (7) miles of SR 46 in Lake and Seminole Counties
- Rebuilding the US 64/SR 46 interchange in Mount Dora
- Shifting the CR 460 connection to SR 46 so wildlife can move more safely between habitats.

[Click here to view the overall Project Schedule.](#) Please understand schedules are subject to change due to a host of variables.

**WEKIVA PARKWAY PROJECT SECTION MAP**

Click on a Section Number for Project Details.



[Click here to view larger map](#)

The 32-mile tolled expressway will provide travel alternatives and relieve US 64, SR 46 and other area roads of traffic congestion resulting from growth and travel between Orange, Lake and Seminole Counties.

Authorized in 2004 by the Wekiva Parkway and Protection Act (Chapter 268, Part II, F.S.), this expressway has been heralded as a shining example for transportation planning through an environmentally sensitive area. Development of the Wekiva Parkway has included setting aside more than 2,400 acres of land for conservation. The parkway also will include numerous wildlife bridges, and will be largely elevated to reduce accidents between vehicles and wildlife.

**HELPFUL LINKS**

- Central Florida Expressway Authority
- Florida Department of Transportation
- Florida 511
- SunRail
- I-4 Project
- FDOT Central Florida Project
- Florida's Turnpike Enterprise

**FOLLOW US**

- Facebook
- Twitter

Copyright 2012. All rights reserved. Home | FDOT Sections | CFY Sections | Sections by County | Project History | FID | Contact Us  
Public participation is solicited without regard to race, color, national origin, age, sex, religion, disability or family status.

**LATEST NEWS**

Click on text for details.

- June 2014  
More Than 100 Attend FDOT Section 9 Public Meeting Open House
- June 2014  
Wekiva Parkway PD&E Study Wins 2014 Engineering Excellence Award
- June 2014  
Seminole County Commissioners Receive Update on Wekiva Parkway
- May 2014  
Check Out the Latest Section 43 & 45 Construction Photos
- April 2014  
More Than 200 Attend FDOT Public Meeting on Sections 2 & 9

**PUBLIC MEETING - 100-Plus Attend FDOT Section 3 Meeting**

**PROJECT DOCUMENTS**

**PRESENTATIONS**

**PRESS RELEASES**

**CONTACT US**

Mary Brooks  
Public Information Officer  
[Info@wekivaparkway.com](mailto:Info@wekivaparkway.com)  
407-694-5505

