



LAKE COUNTY

FLORIDA

Wekiva Parkway CR 46A Alignment

May 21, 2013

Presentation Prepared By
The Florida Department of Transportation and
The Lake County Public Works Department

Purpose



- Present the Board of County Commissioners with alignment alternatives for CR 46A which will be realigned with the construction of the Wekiva Parkway.

Presentation Outline



- Background
- LSMPO Comments
- FDOT Presentation/Recommendation

Background

Background



- In 2004, the Wekiva Parkway was authorized by the Wekiva Parkway and Protection Act (Ch. 369, Part III, F.S.)
- The PD&E study began in 2005 and was approved as a final document in May 2012 by the Federal Highway Administration.
- On March 12, 2012 at a presentation to the BCC, the FDOT agreed to revisit the alignment of CR 46A in association with the design of the Wekiva Parkway.

Previous BCC discussion



- 2007** ● **Oct 23** - BCC: Approved a letter recommending the final alignment of CR46A
- 2010** ● **Oct 26** - BCC: Agreement with OOCEA on design and construction of the Wekiva Parkway
- 2010** ● **Dec 7** - BCC: Agreement with OOCEA/FDOT on ownership and maintenance of improvements
- 2012** ● **March 12** - BCC: FDOT agrees to reevaluate the CR 46A alignment.
- 2013** ● **May 21** - BCC: Presentation by FDOT on their recommended alignment for CR 46A

LSMPO Comments

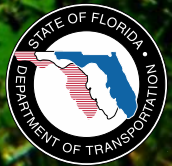
FDOT Presentation & Recommendation

WEKIVA PARKWAY
Completing Central Florida's Beltway

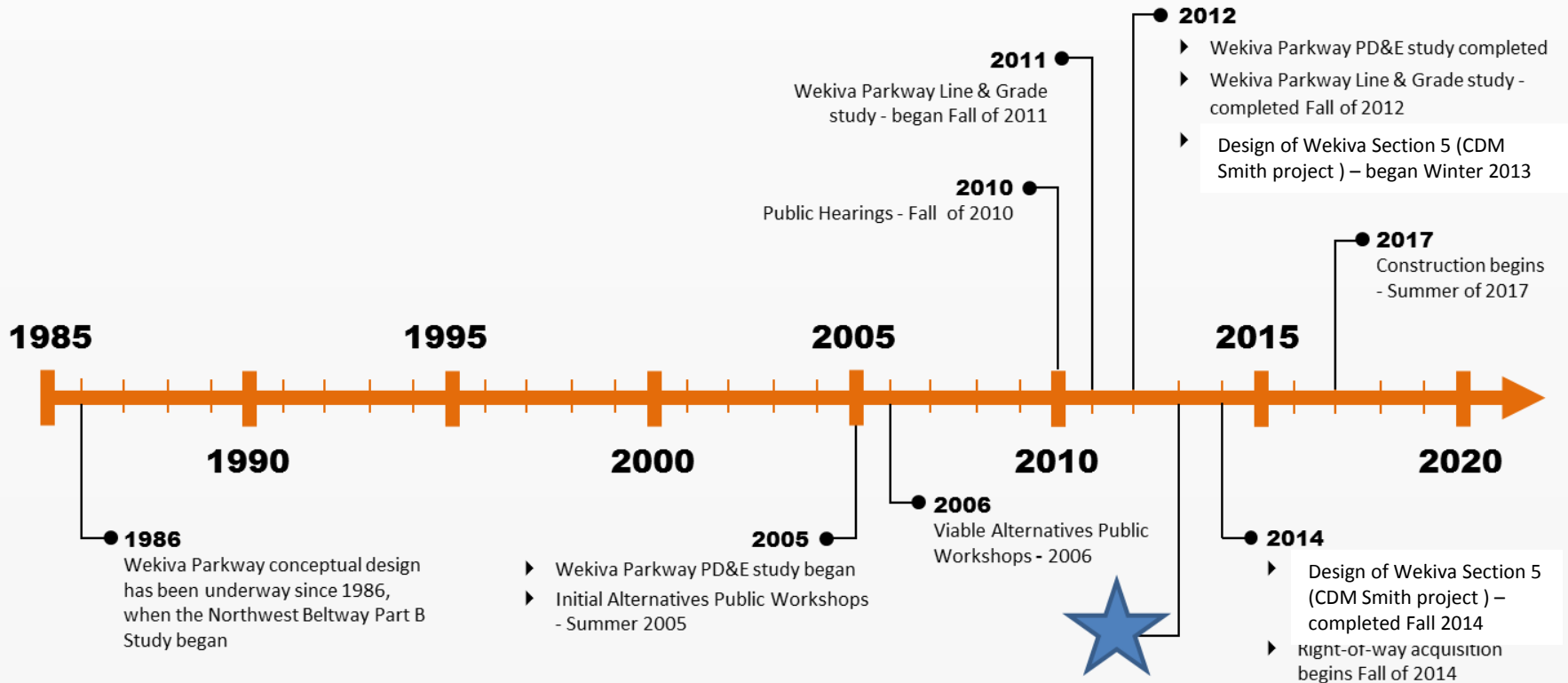


**CR 46A Realignment (Section 5)
From North of Arundel Way to Wekiva Parkway**

**Lake County Board of County Commissioners
May 21, 2013**

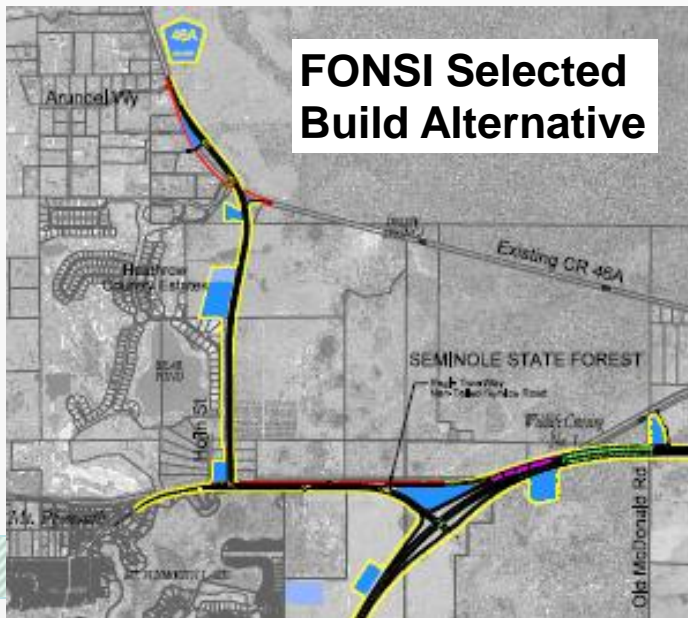


Project History



Project History

- October 2007 – Lake County BOCC Approved PD&E Preferred Alternative
- January 2012 – FDOT Agreed to Consider Alternative Alignments
- May 11, 2012 – Approved FONSI received from FHWA
- December 2012 – Design Traffic Technical Memorandum Completed
- February 4, 2013 – Notice-to-Proceed for Design



October 24, 2007

Ms. Norraine Downs
District V Secretary
Florida Department of Transportation
719 South Woodward Boulevard
Deland, Florida 32720

RE: Realignment of CR 46A

Dear Ms. Downs:

On August 28, 2007, the Lake County Board of County Commissioners was asked to clarify their position on the alignment of the CR 46A Corridor in east Lake County. At that meeting, the Commission approved sending a letter signed by the Chairman to your office outlining which of the options they approved. The Option selected is the option that concerns Mr. Taylor's property east of Heathrow Estates. Under this option, we are requesting that a 100 foot buffer be established between Heathrow and the right of way of CR 46A. We are also requesting right of way of CR 46A be limited to a 150 foot width.

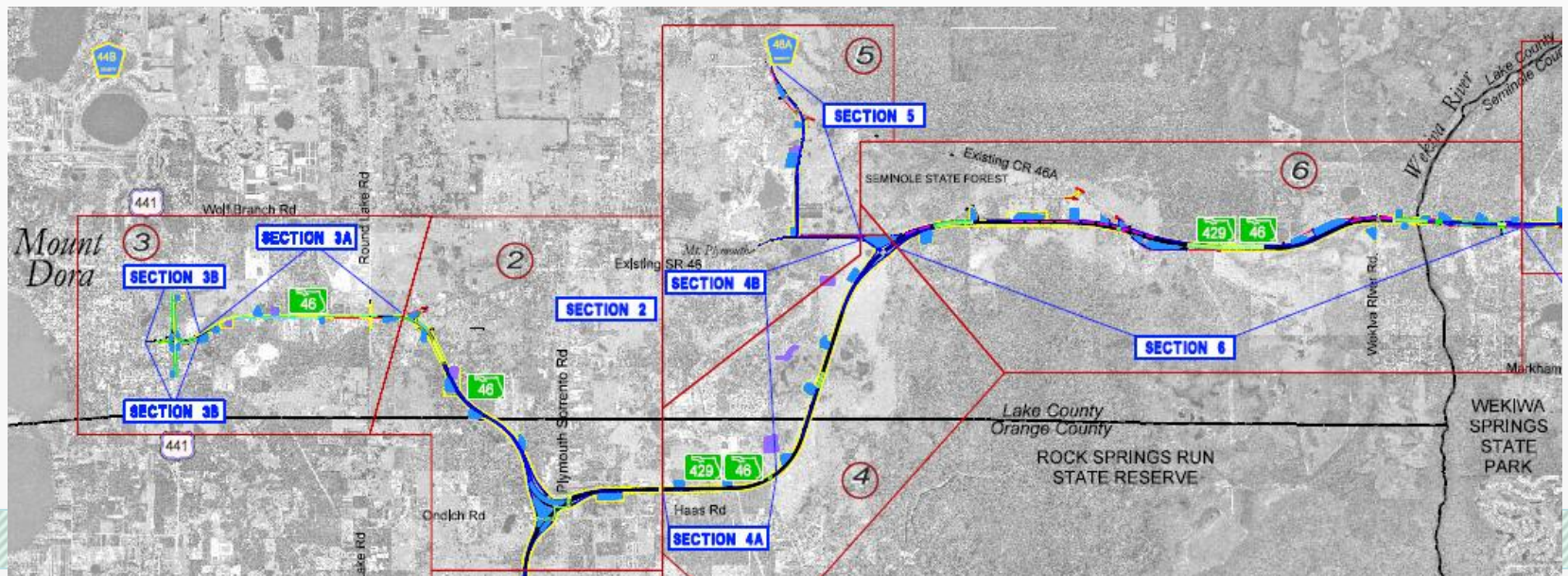
Therefore, the total width required is 250 feet. It is our understanding that the entire portion in this area would come from Mr. Taylor's property.

Sincerely,

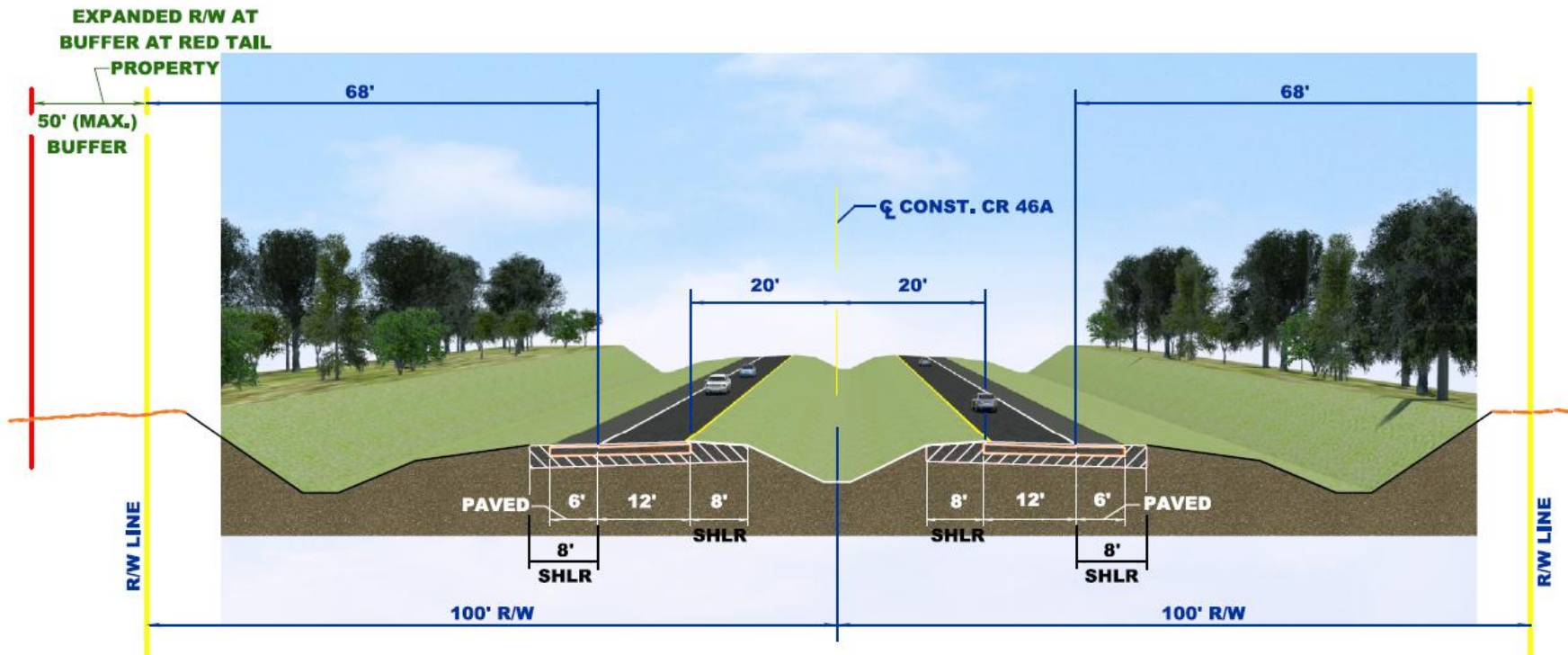
Welton G. Cadwell
Chairman

Project Status – Lake County Sections

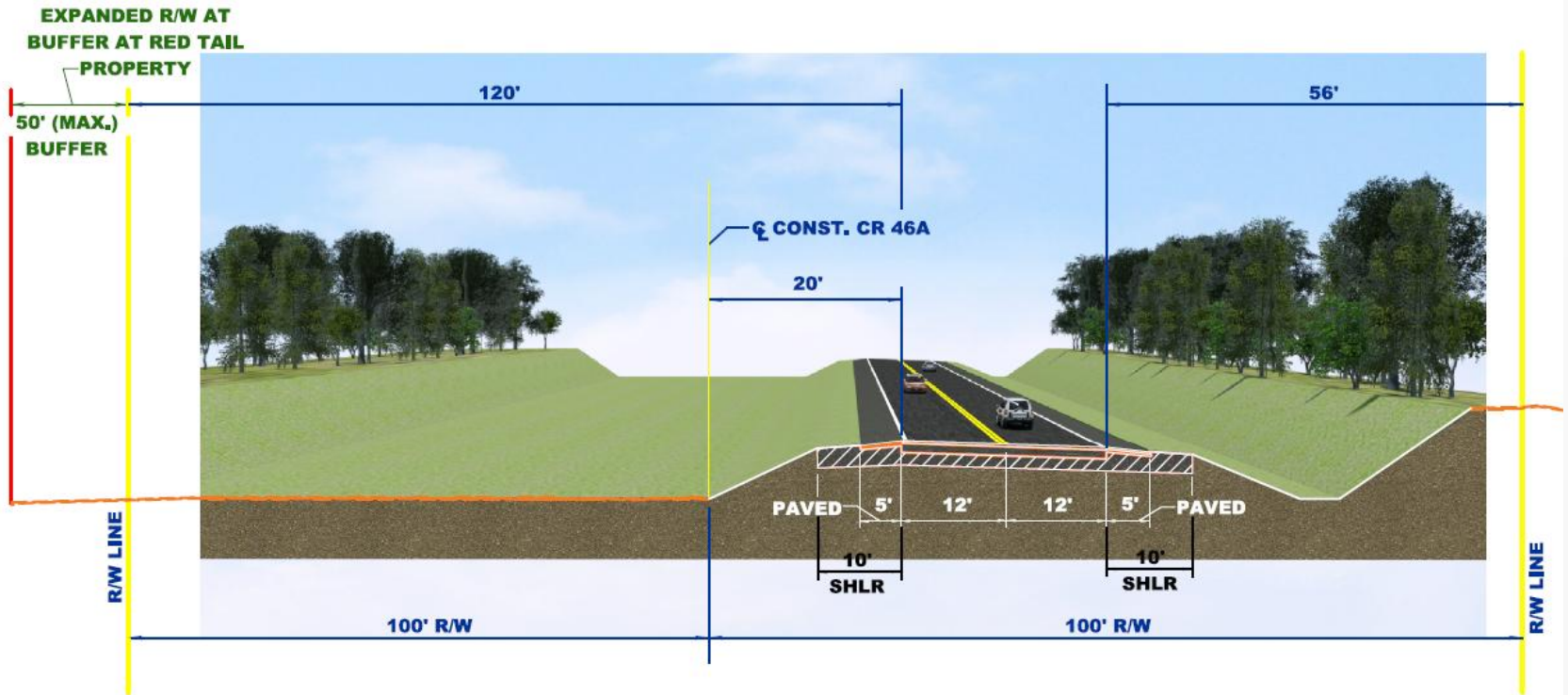
- FDOT Section 3A – Design began in May 2013
- FDOT Section 3B – Design to reach 30% plans in May 2013
- FDOT Section 5 – Design began February 4, 2013
- FDOT Section 6 – Design began April 30, 2013
- FDOT Section 4A & 4B – Clearing & grubbing started in February



2-Lane Divided Typical Section Future Inside Lanes with 40-ft Median

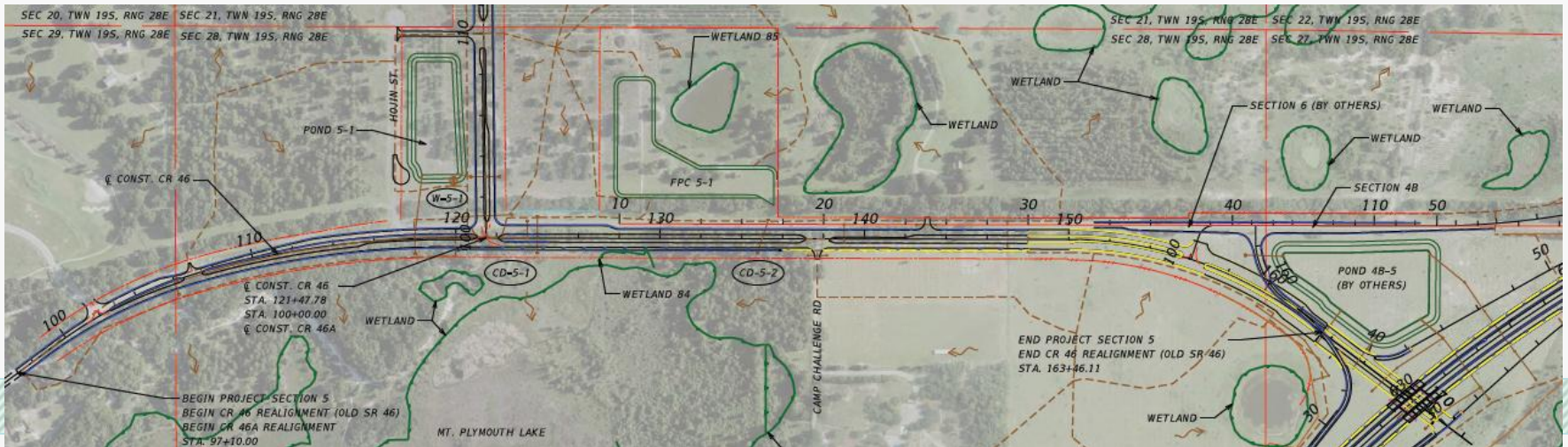


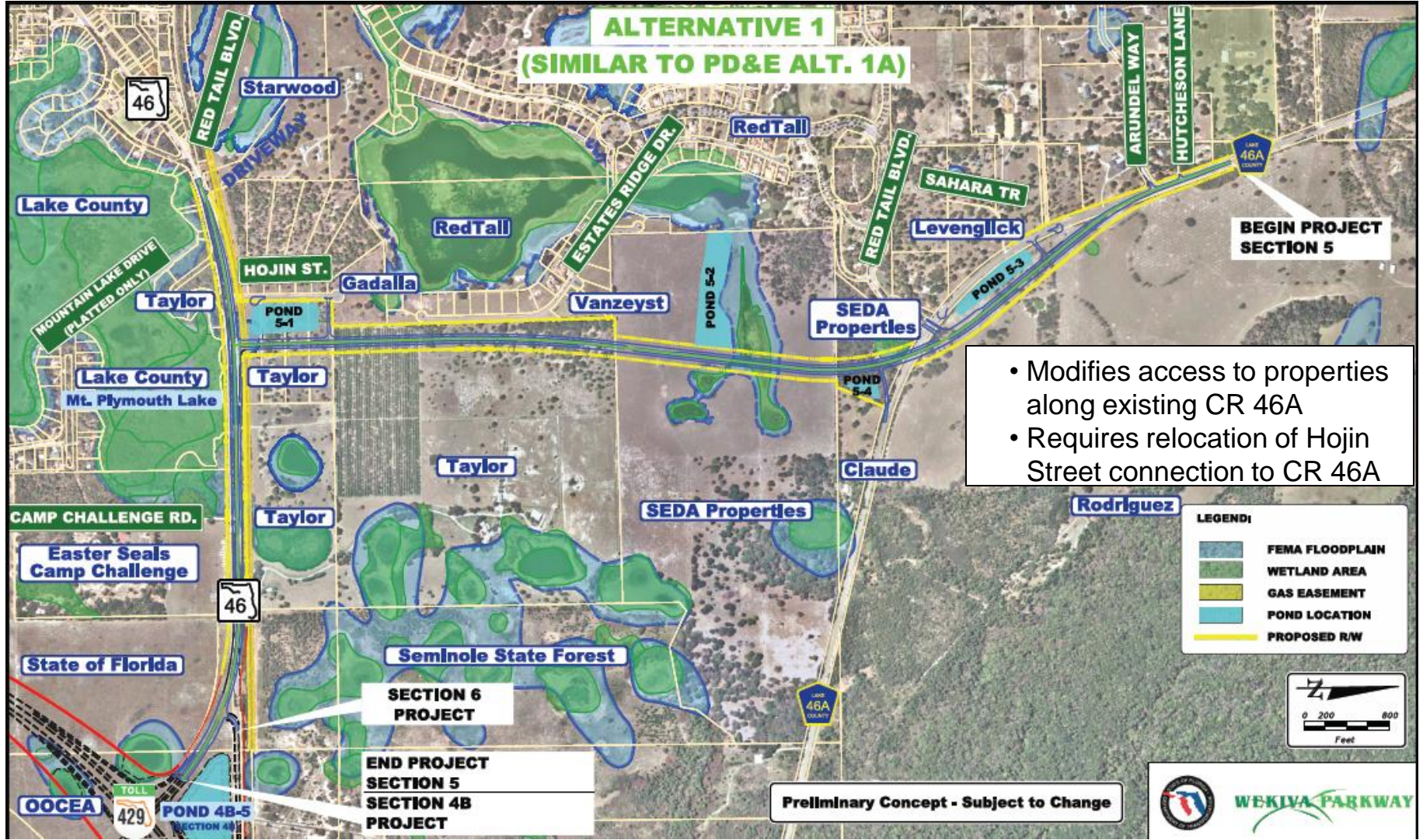
2-Lane Undivided Typical Section Future Northbound Lanes



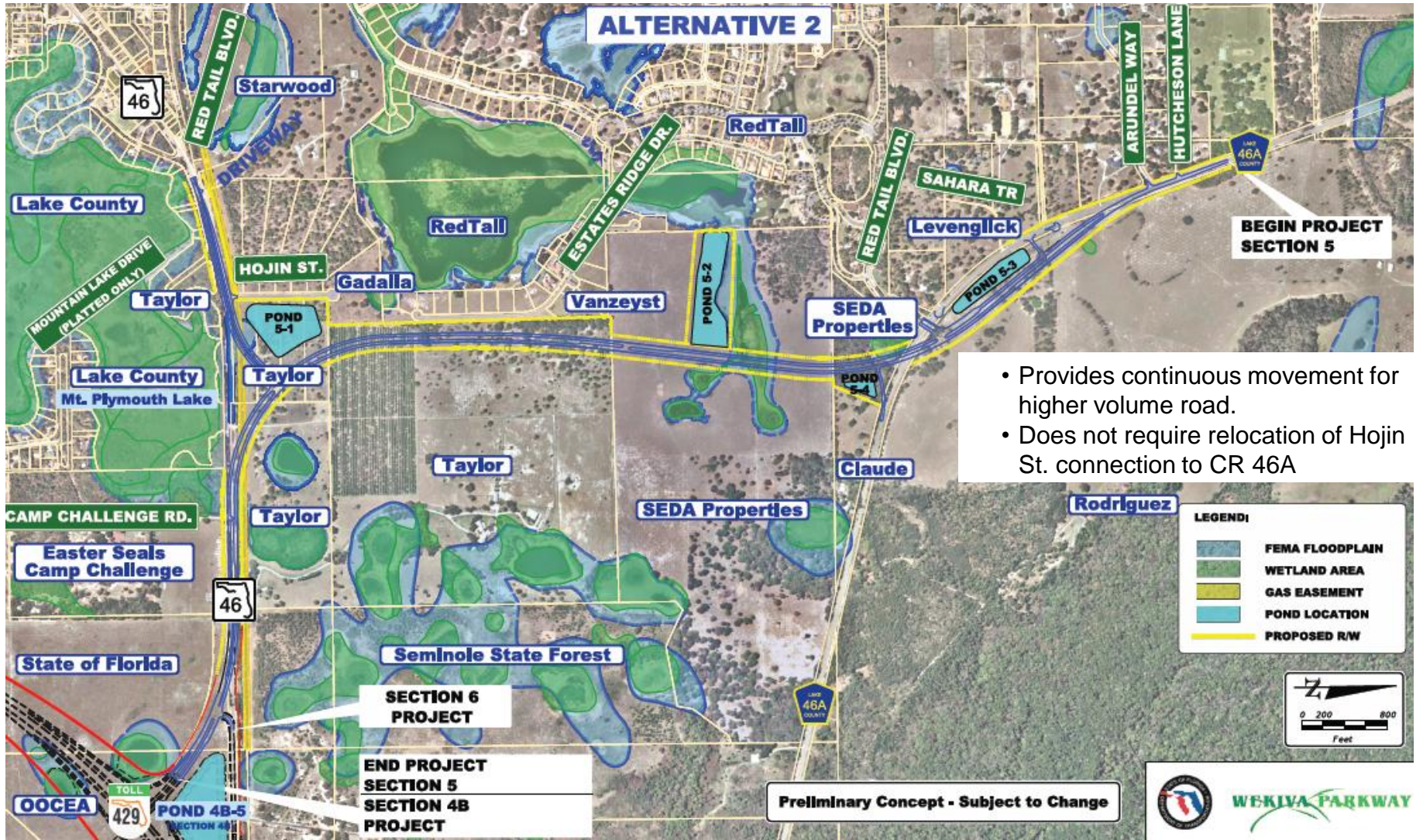
Project Description

- SR 46 Widening to Wekiva Parkway
 - Four-lane, divided roadway along existing SR 46
 - Accommodates bike lane
 - Terminates at Wekiva Parkway interchange
 - Typical section to be developed once design alternative is selected
 - Access to adjacent properties to be evaluated during design



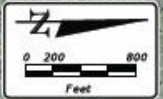


- Modifies access to properties along existing CR 46A
- Requires relocation of Hojin Street connection to CR 46A



- Provides continuous movement for higher volume road.
- Does not require relocation of Hojin St. connection to CR 46A

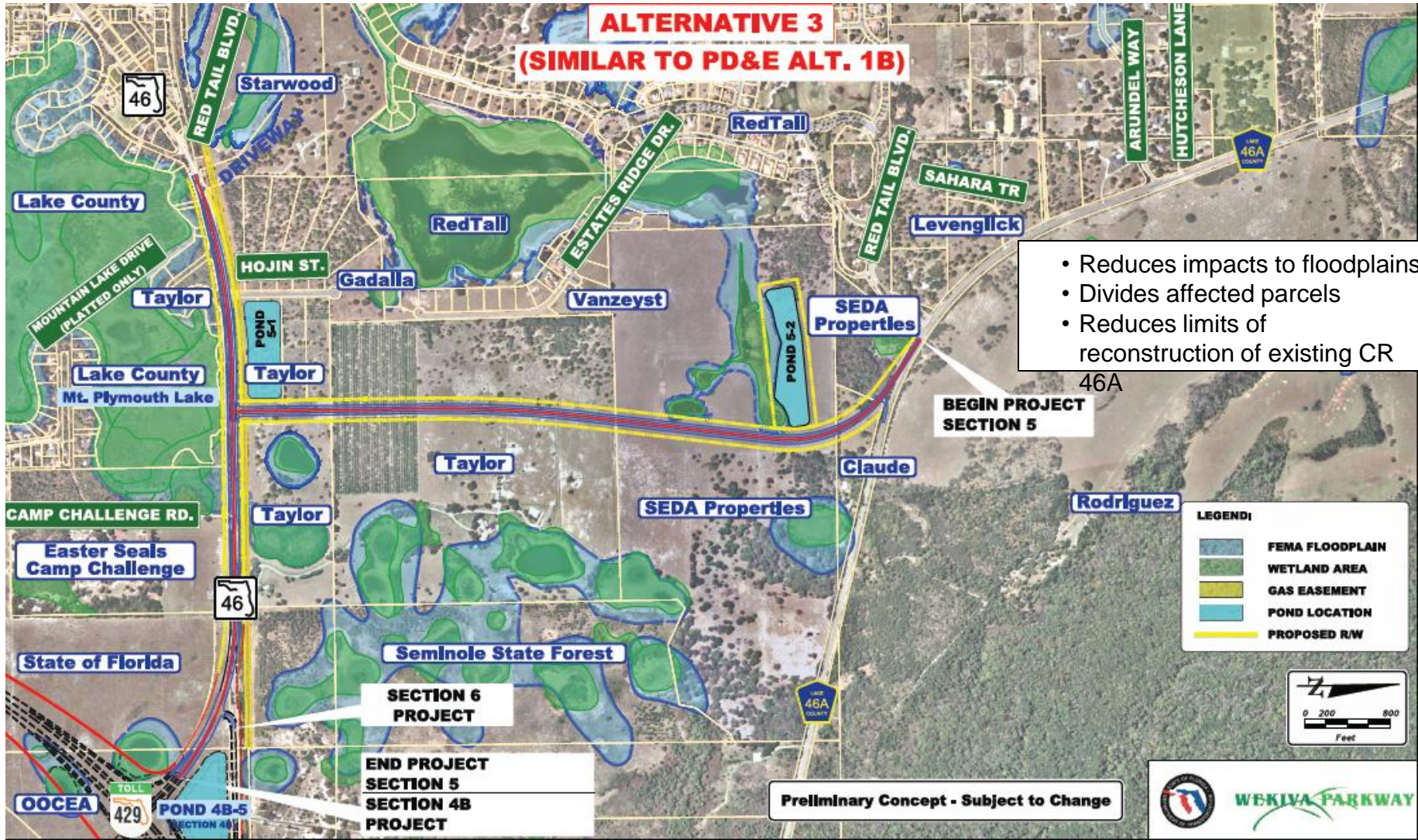
LEGEND	
	FEMA FLOODPLAIN
	WETLAND AREA
	GAS EASEMENT
	POND LOCATION
	PROPOSED R/W



Preliminary Concept - Subject to Change



**ALTERNATIVE 3
(SIMILAR TO PD&E ALT. 1B)**



- Reduces impacts to floodplains
- Divides affected parcels
- Reduces limits of reconstruction of existing CR

BEGIN PROJECT SECTION 5

SECTION 6 PROJECT

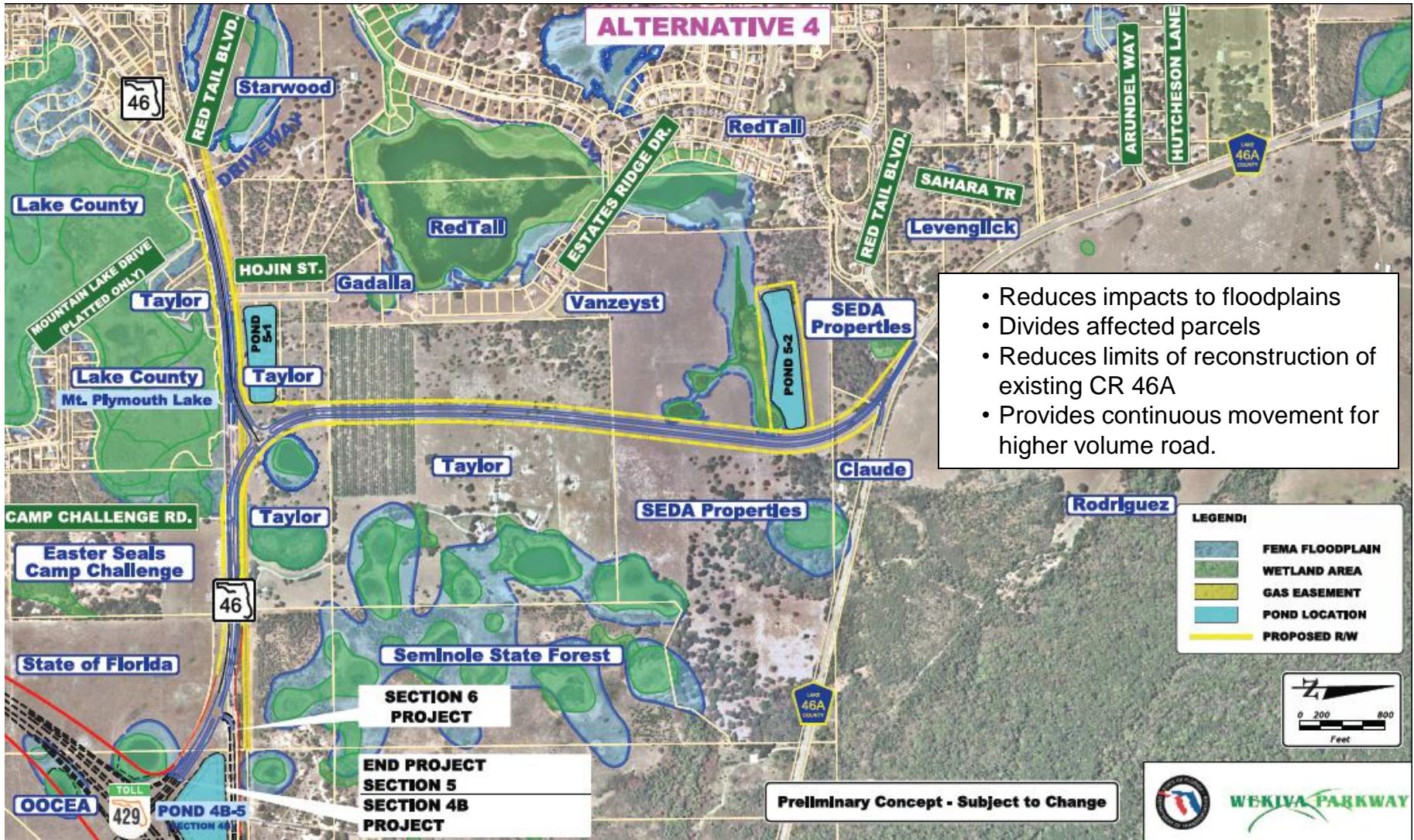
END PROJECT SECTION 5
SECTION 4B PROJECT

Preliminary Concept - Subject to Change

LEGEND:

	FEMA FLOODPLAIN
	WETLAND AREA
	GAS EASEMENT
	POND LOCATION
	PROPOSED R/W



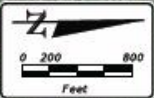


ALTERNATIVE 4

- Reduces impacts to floodplains
- Divides affected parcels
- Reduces limits of reconstruction of existing CR 46A
- Provides continuous movement for higher volume road.

LEGEND

	FEMA FLOODPLAIN
	WETLAND AREA
	GAS EASEMENT
	POND LOCATION
	PROPOSED R/W



Preliminary Concept - Subject to Change

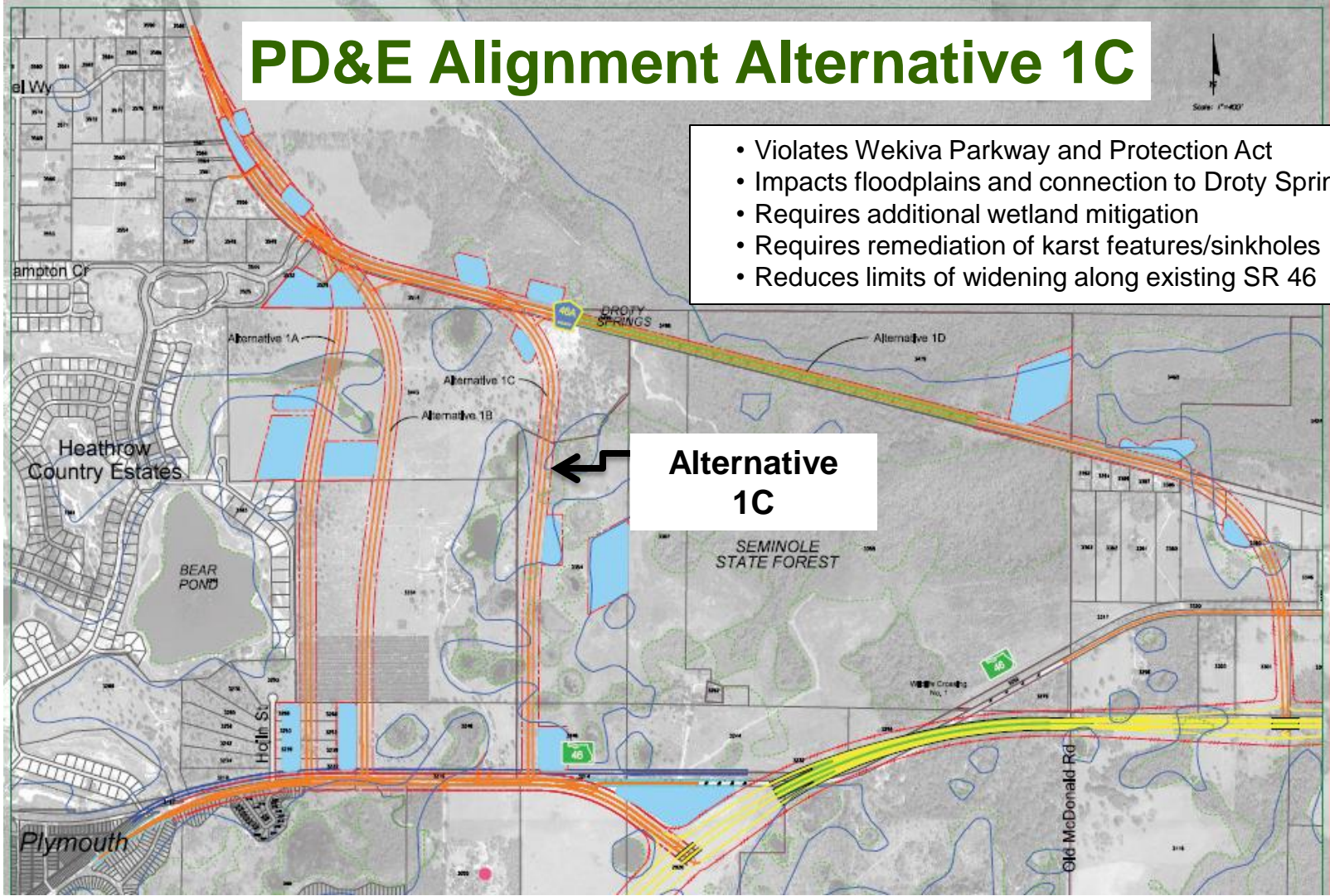


PD&E Alignment Alternative 1C



- Violates Wekiva Parkway and Protection Act
- Impacts floodplains and connection to Drotty Springs
- Requires additional wetland mitigation
- Requires remediation of karst features/sinkholes
- Reduces limits of widening along existing SR 46

**Alternative
1C**



Evaluation Matrix

	Alternatives				
	1 (Similar to PD&E Alternative 1A)	2	3 (Similar to PD&E Alternative 1B)	4	PD&E 1C
Estimated Total Cost (\$ Million)	20.2	20.6	18.2	17.8	24.7
Wetland Impacts (Acres)	2	2	2	2	4
Floodplain Impacts (Acres)	13	13	5	5	15
Affected Parcels	18	16	16	16	21
Traffic Level of Service (2032)	F	D	F	D	F
Acquisition Risk	Low	Low	High	High	High
Schedule Risk	Low	Low	High	High	High

FDOT Recommendation

The Florida Department of Transportation recommends that the Lake County Board of County Commissioners adopts Alternative 2 of the CR 46A Realignment (Wekiva Parkway – Section 5), which includes the following elements:

- Westerly Alignment
- Additional Buffer Along West Right of Way Line
- Depressed Profile
- Continuous Movement for CR 46A with existing SR 46 terminating at a “T” intersection with CR 46A



For More Information:

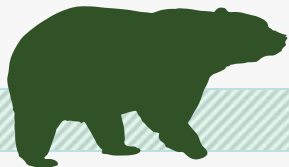
Mary Brooks

Public Involvement Coordinator

C: 407-694-5505

E: Info@wekivaparkway.com

W: www.wekivaparkway.com



The screenshot shows the Wekiva Parkway website with the following content:

- WELCOME:** A message from the Florida Department of Transportation and the Orlando-Orange County Expressway Authority, thanking visitors for their interest in the Wekiva Parkway design and construction projects. It states that the project is a cooperative effort between these agencies and the Florida Turnpike Enterprise. The Wekiva Parkway (SR 429) would connect to SR 417, completing the beltway around northwest metropolitan Orlando. This estimated \$1.7 billion project includes \$500 million of non-toll road improvements including:
 - Building seven (7) miles of four-lane and six-lane of SR 48 in Lake and Seminole Counties
 - Rebuilding the US 441/SR 48 interchange in Mount Dora
 - Relocating the CR 48A connection to SR 48 to provide improved wildlife connectivity and additional local road system benefits
- WEKIVA PARKWAY PROJECT SECTION MAP:** A map showing the project sections (1A through 8) and their locations. A legend indicates that green boxes represent 'ROADWAY SECTION' and purple boxes represent 'DUCOA SECTION'. A note says 'Click on a Section Number for Project Details.'
- LATEST NEWS:** A list of recent news items:
 - Click on text for details
 - May 2012: [FOOT Advisories for Section 3B Design Firm](#)
 - June 2012: [FOOT Advisories for Section 2C Design Firm](#)
 - August 2012: [FOOT Advisories for Section 6 Design Firm](#)
 - October 2012: [Design-Build Team Selected for Sections 4A & 4B](#)
 - Fall 2012: [Wekiva Parkway Groundbreaking](#)
- PROJECT DOCUMENTS**
- PRESENTATIONS**
- PRE & RELEASES**
- PUBLIC MEETING NOTICES**
- CONTACT US:** Mary Brooks

twitter

facebook