

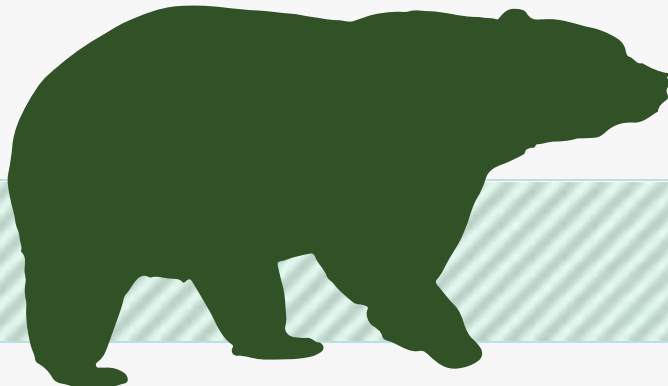


## A Regional Transportation Solution

Lake County  
Board of County Commissioners' Update  
March 25, 2014



# Funding Partners



# WEKIVA PARKWAY



**WEKIVA PARKWAY**



**1985**

**1995**

**2004**  
Wekiva Parkway & Protection Act

**2005**

**2011**  
Line & Grade Began (Fall)

**2012**

FHWA Approved PD&E Study (May)  
FDOT Line & Grade Completed (Fall)  
OOCEA Sections Start Design

**2016**

Section 1A & 1B  
Open to Traffic

**2021**

Wekiva Parkway  
Fully Open to  
Traffic



**1990**

**2000**

**2010**

**2020**

**1986**  
Wekiva Parkway conceptual design gets underway via Northwest Beltway Part B Study

**2002**  
Wekiva Basin Area Task Force Created

**2006**  
Viable Alternatives Public Workshops

**2019**

Section 6 & 7A Open to Traffic  
**2020**  
Sections 2A, 2B, 2C, 3A, 3B, 5 & 7B Open to Traffic

**2003**  
Wekiva River Basin Coordinating Committee Created

**2005**  
PD&E Study Began  
Initial Alternatives Public Workshops ( Summer)

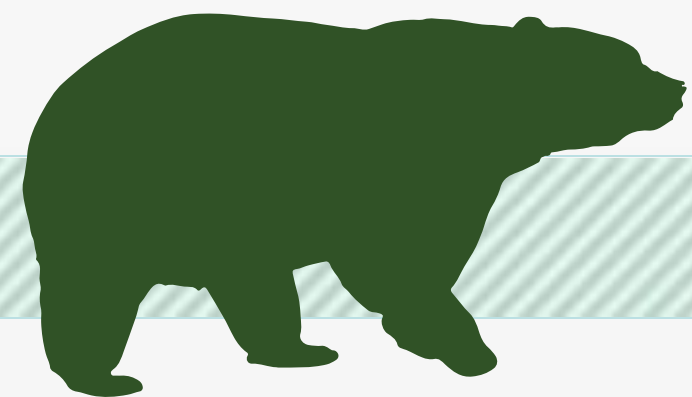
**2013**  
Section 4A & 4B Construction Begins (Feb.)  
Section 1A & 1B 60% Design Public Meeting (March)  
Section 8 Public Meeting - 15% Line & Grade Design (June)  
Section 3A & 3B Preliminary Design Public Meeting

**2015**  
Section 4A & 4B Open to Traffic



## Protecting Nature

- **Wekiva River: Outstanding Florida Water & National Wild & Scenic River**
- **Authorized by the 2004 Wekiva Parkway and Protection Act**
  - **Setting Aside More than 3,400 Acres for Conservation**
  - **Largely Elevated to Reduce Accidents Between Vehicles & Wildlife**
  - **Several Wildlife Bridges**
  - **Few Interchanges (Reduce Development)**



# PROJECT ECONOMIC IMPACT

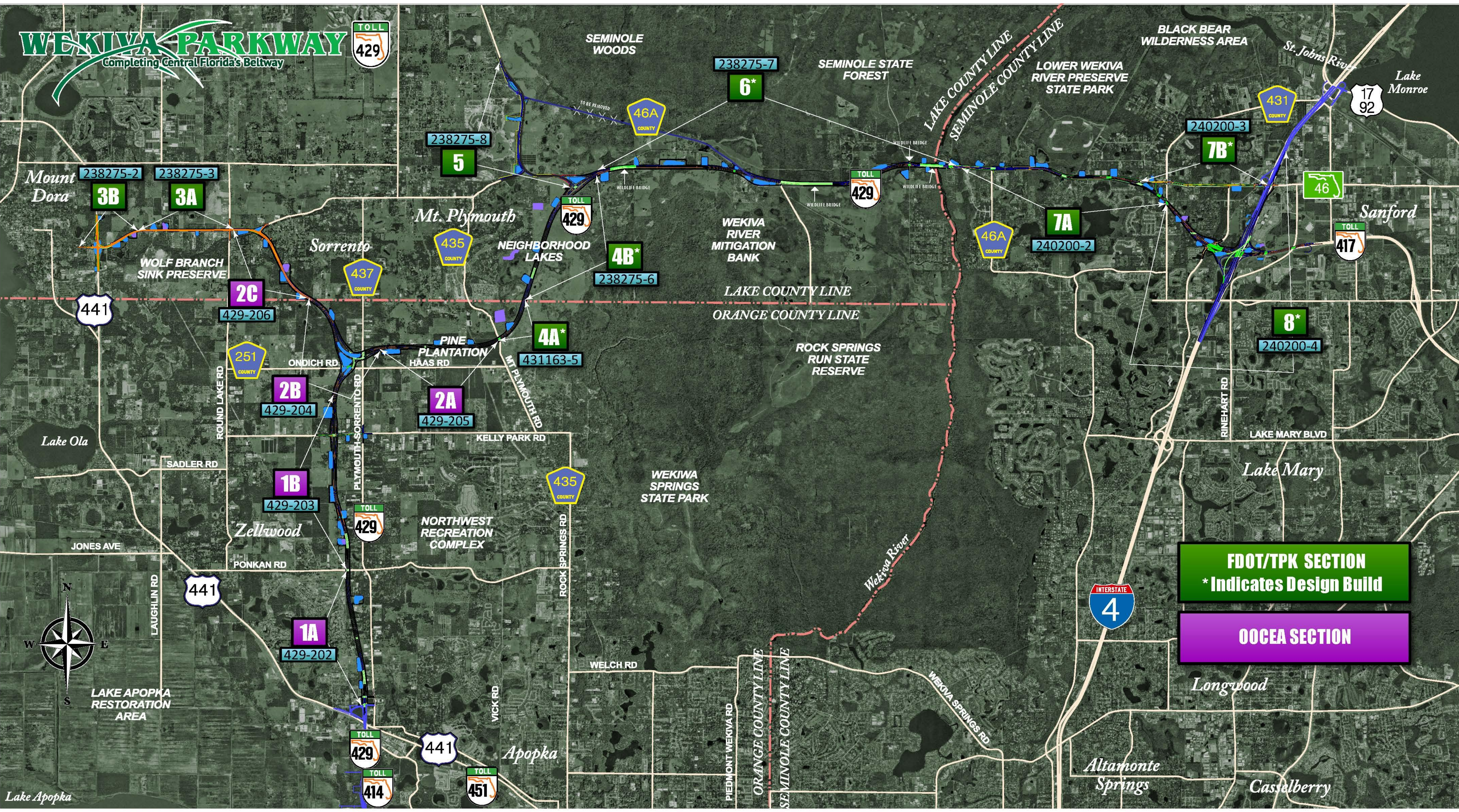
At an estimated cost of \$1.6 Billion for Engineering & Construction, the Wekiva Parkway is Projected to Provide:

Construction Related Jobs	12,272
Supporting Industries Jobs	5,570
Induced Employment Jobs	17,983

**\*Estimated Total Jobs 35,825**

# WEKIWA PARKWAY

Completing Central Florida's Beltway



**FDOT/TPK SECTION**  
 \* Indicates Design Build

**OOCEA SECTION**

# Design Status

SECTION	MILESTONE	SUBMITTAL SCHEDULE
1A & 1B	100%	March - May 2014
2A	90%	March 2014
2B	90%	Feb. 2014
<b>2C</b>	<b>60%</b>	<b>March 2014</b>
<b>3A</b>	<b>60%</b>	<b>April 2014</b>
<b>3B</b>	<b>60%</b>	<b>April 2014</b>
<b>5</b>	<b>60%</b>	<b>April 2014</b>
<b>6</b>	<b>30%</b>	<b>April 2014</b>
7A	30%	May 2014
7B & 8	Design-Build	





# Expressway Authority Sections



# Pier Option

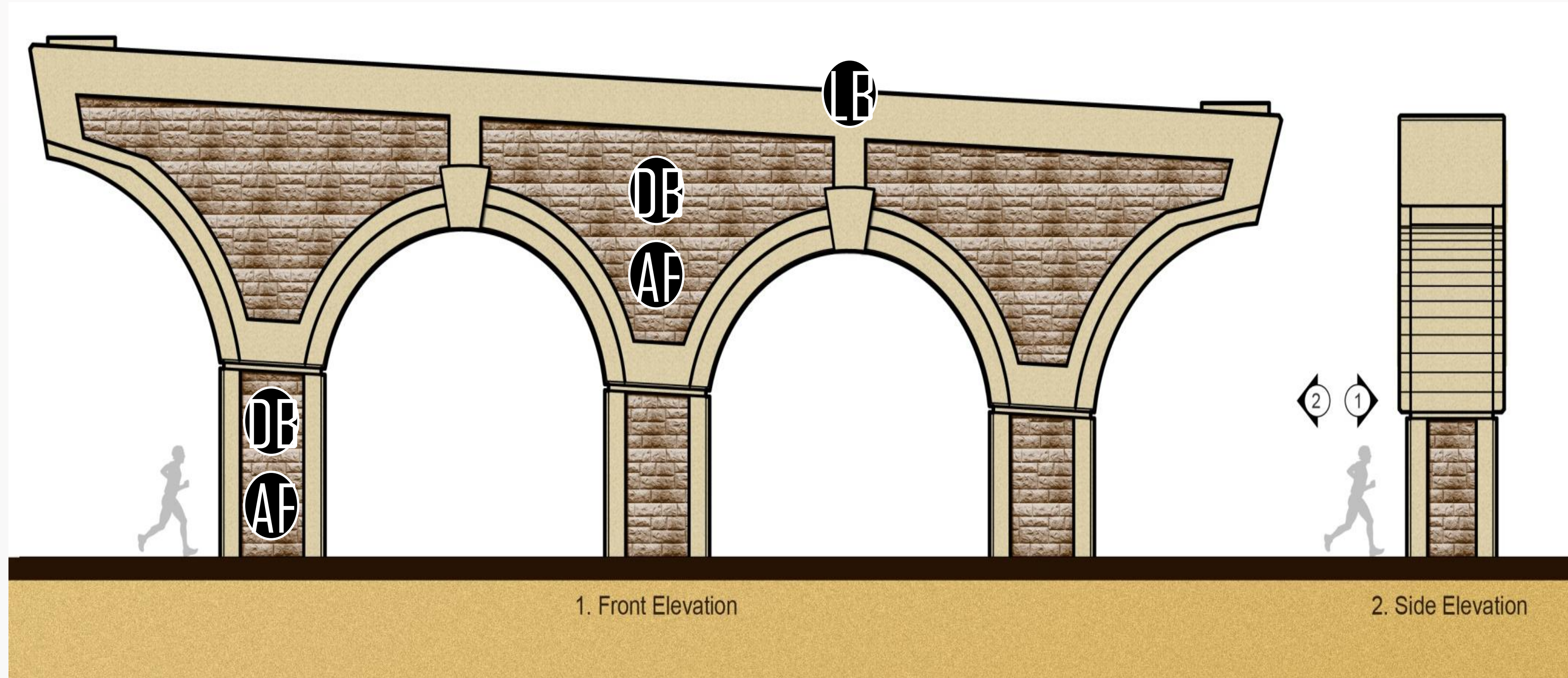
## Standard Colors



Light Brown  
Dark Green



Dark Brown  
Ashlar Formline



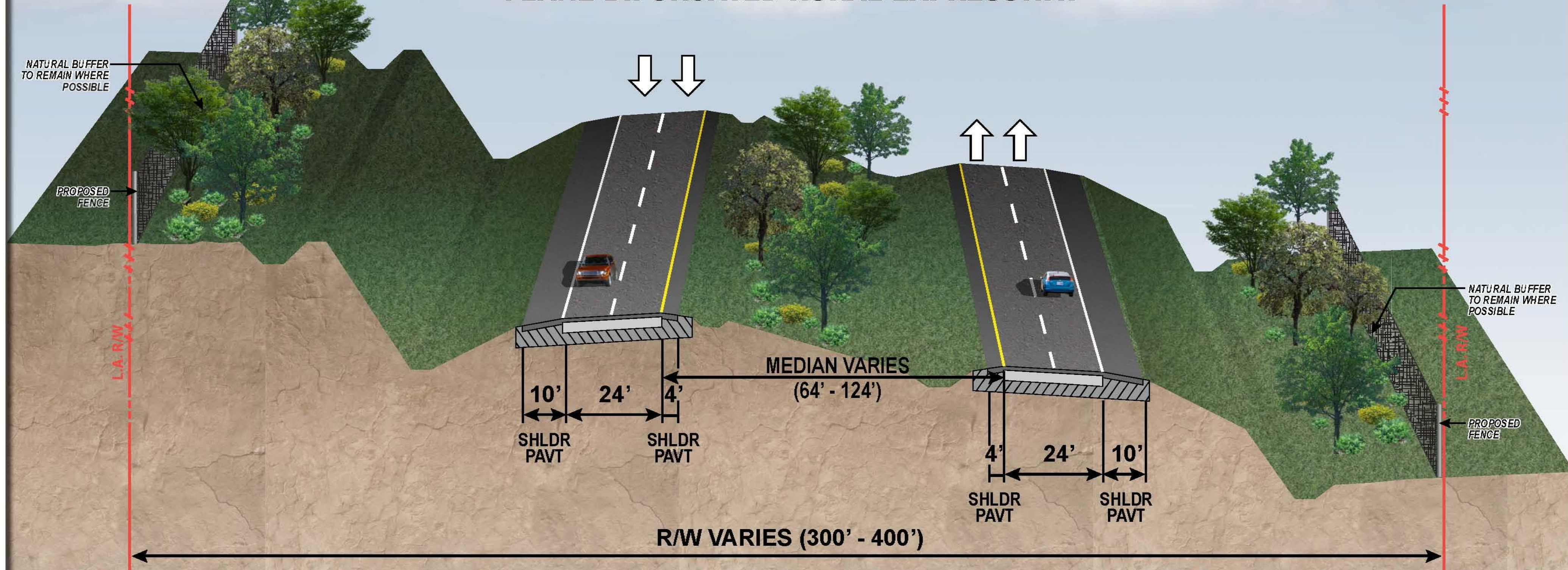
1. Front Elevation

2. Side Elevation

# WEKIVA PARKWAY

## TYPICAL SECTION

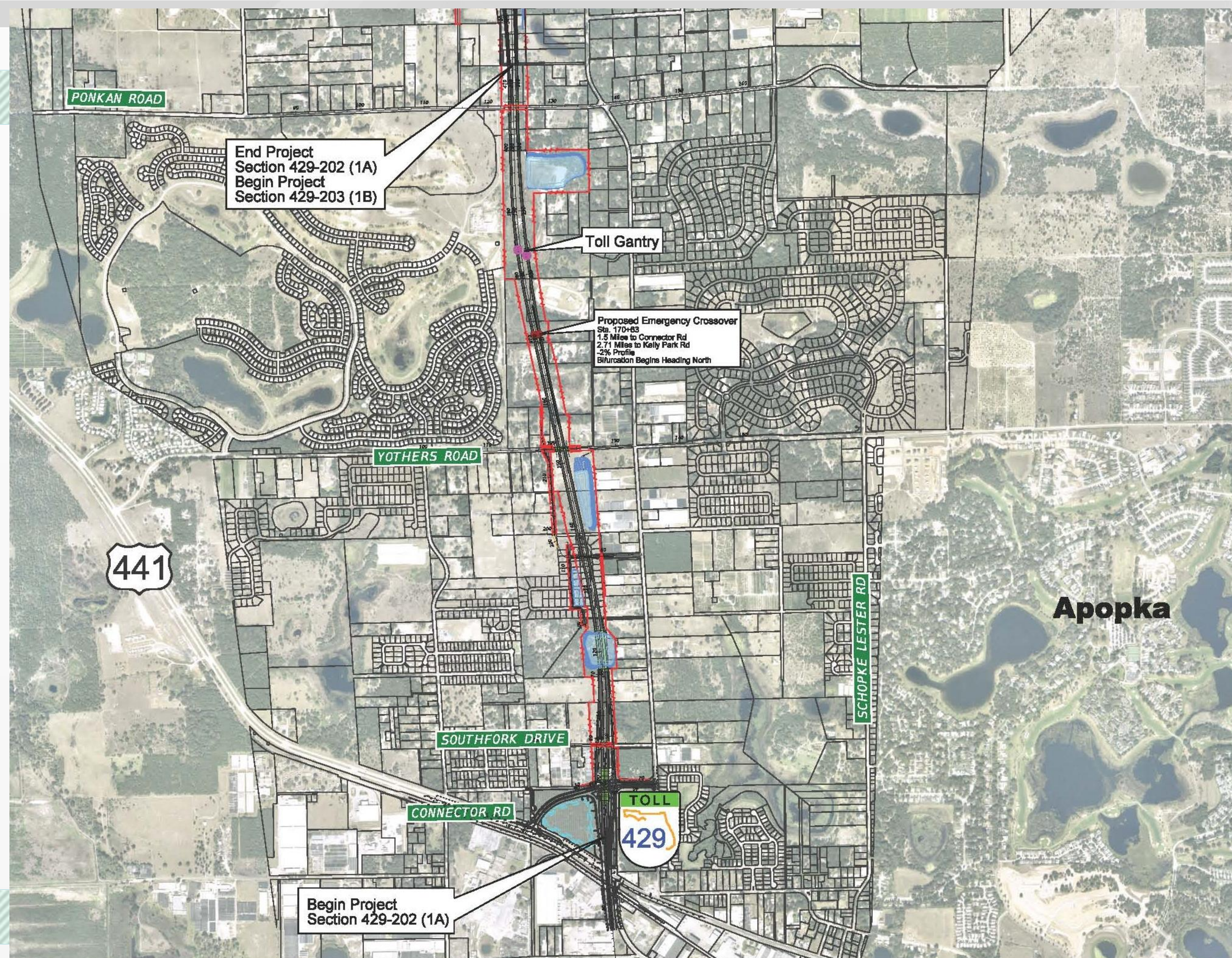
### SR 429 (WEKIVA PARKWAY) 4-LANE BIFURCATED RURAL EXPRESSWAY



NOTE: PRELIMINARY, SUBJECT TO CHANGE



# OOCEA Section 1A



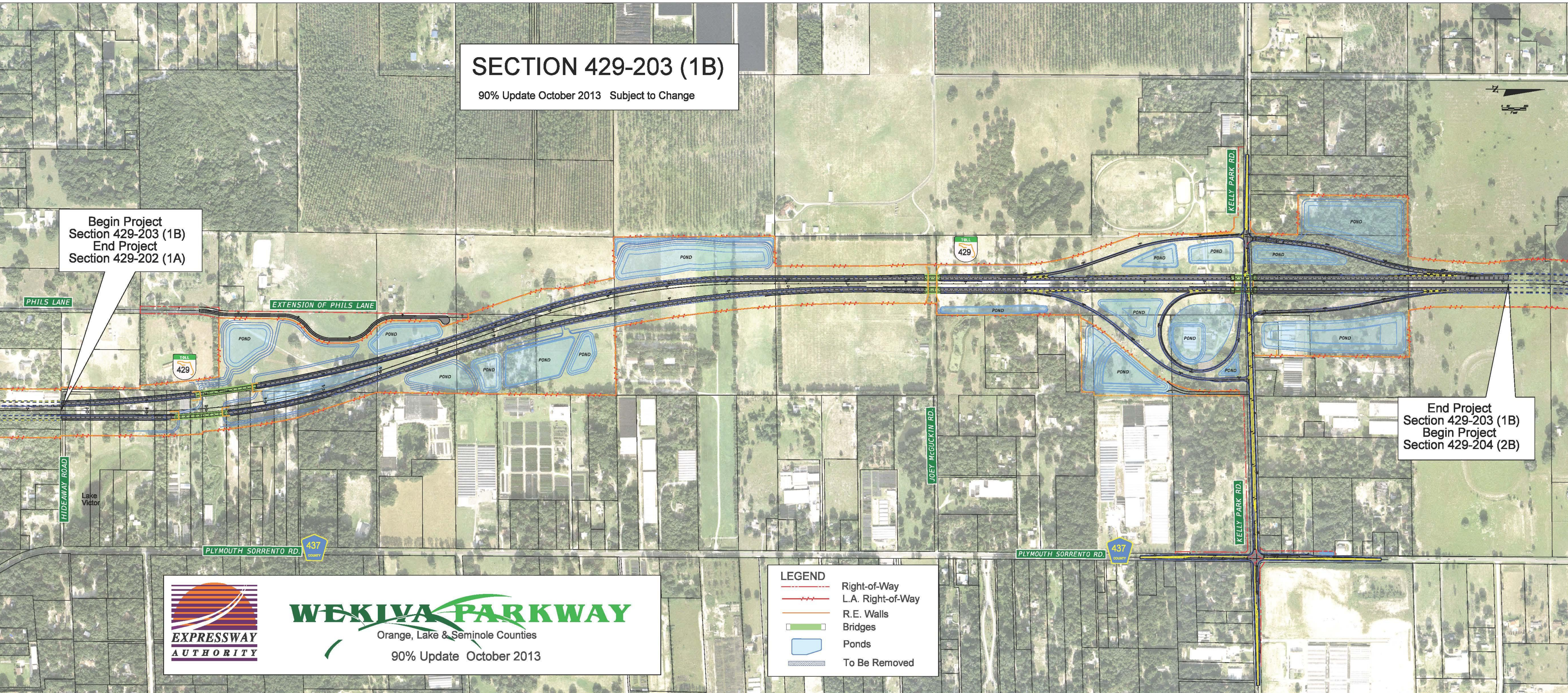
# Section 1B

## SECTION 429-203 (1B)

90% Update October 2013 Subject to Change

Begin Project  
Section 429-203 (1B)  
End Project  
Section 429-202 (1A)

End Project  
Section 429-203 (1B)  
Begin Project  
Section 429-204 (2B)

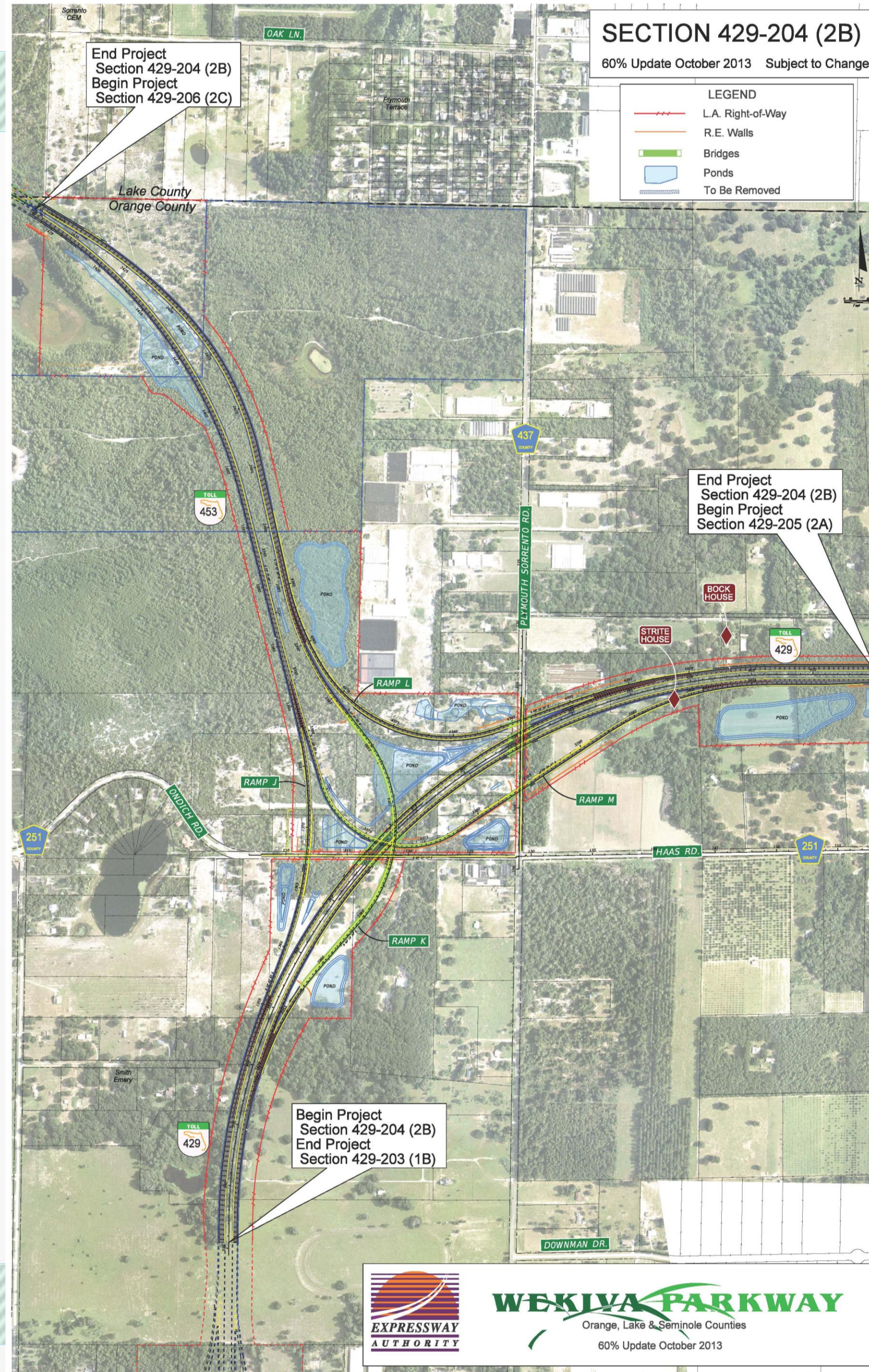


**WEKIIVA PARKWAY**  
Orange, Lake & Seminole Counties  
90% Update October 2013

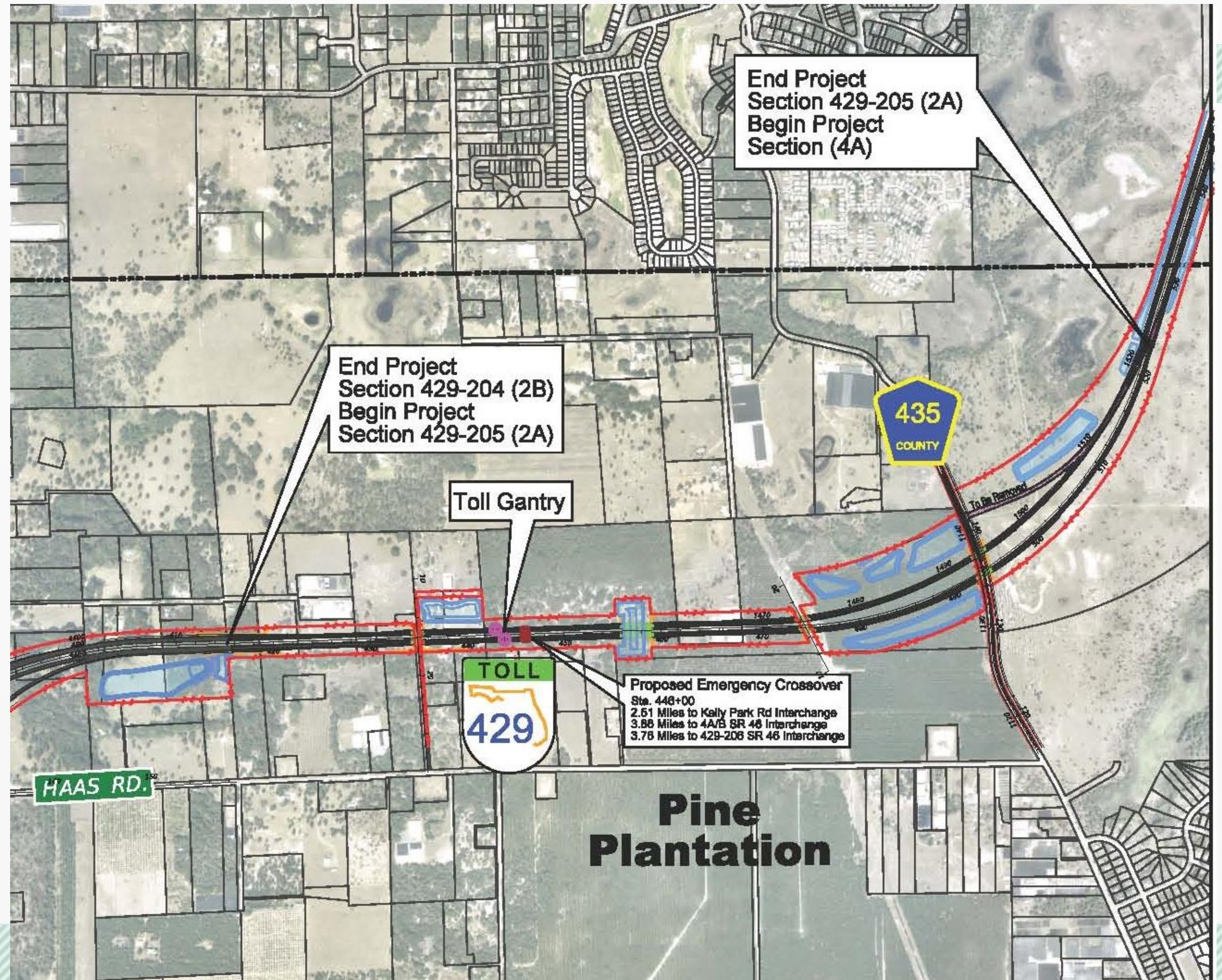
**LEGEND**

	Right-of-Way
	L.A. Right-of-Way
	R.E. Walls
	Bridges
	Ponds
	To Be Removed

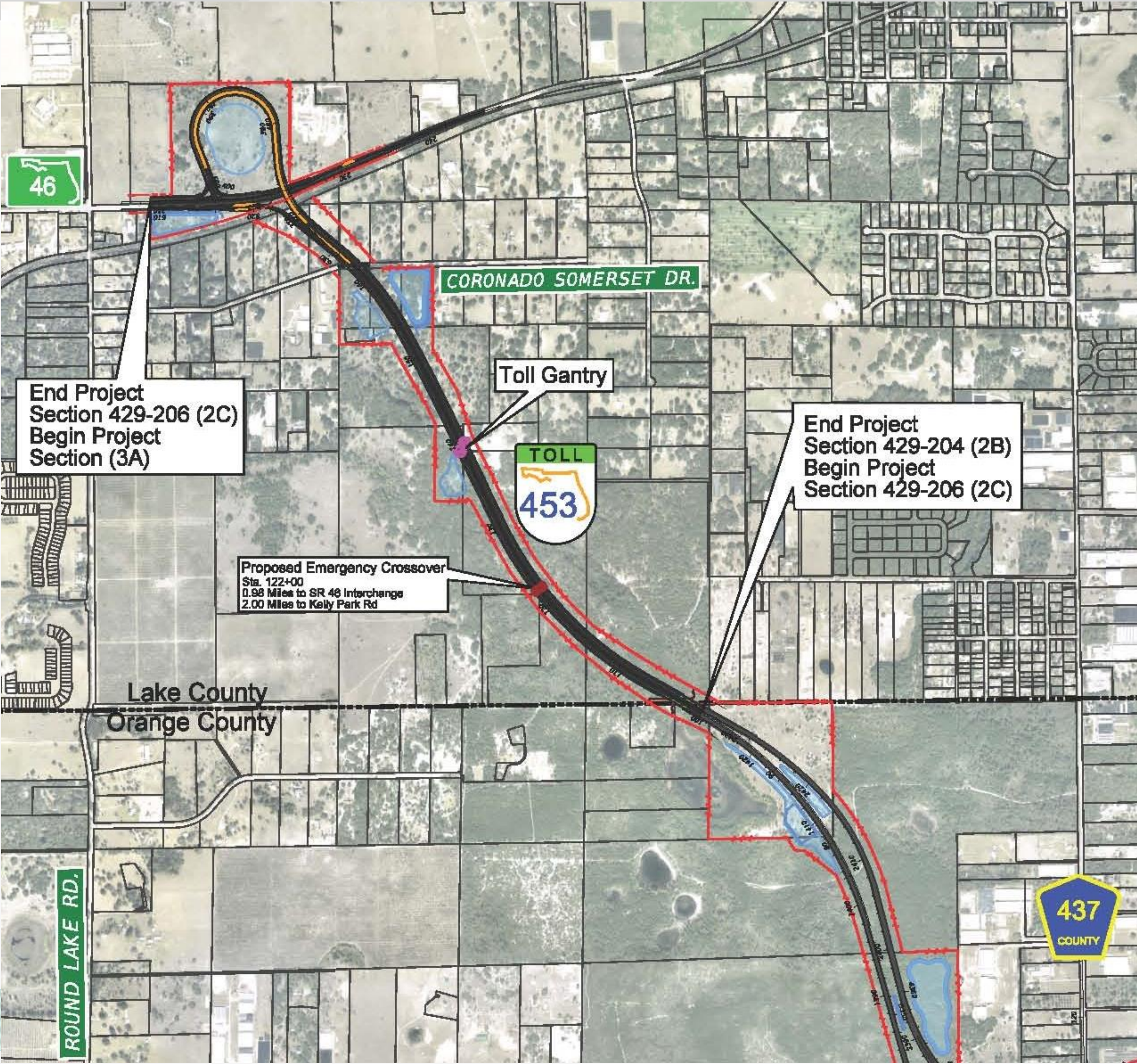
# Section 2B



# Section 2A

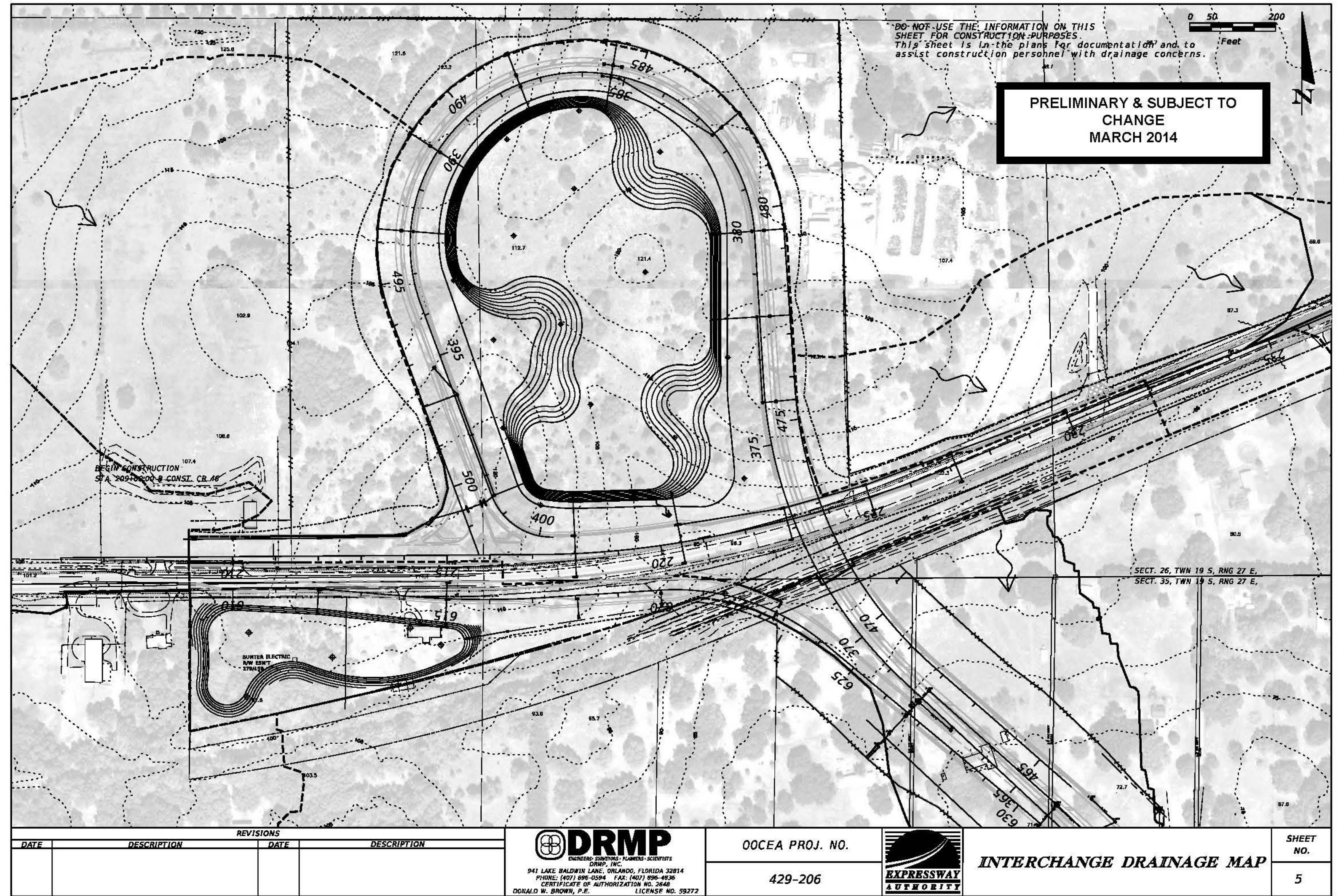


# Section 2C





# Section 2C - Pond Contours



# Section 2C

## - Pond Aesthetics

PRELIMINARY & SUBJECT TO  
CHANGE  
MARCH 2014

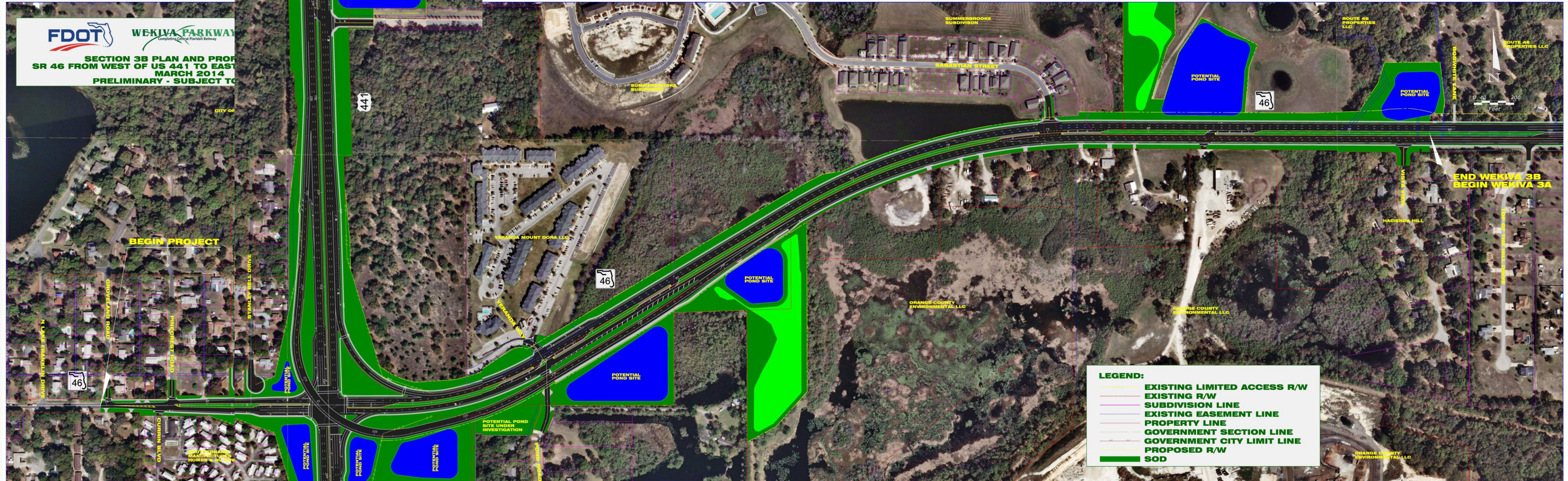


# FDOT Sections





# Section 3B



# Section 4A & 4B



# Section 4A & 4B

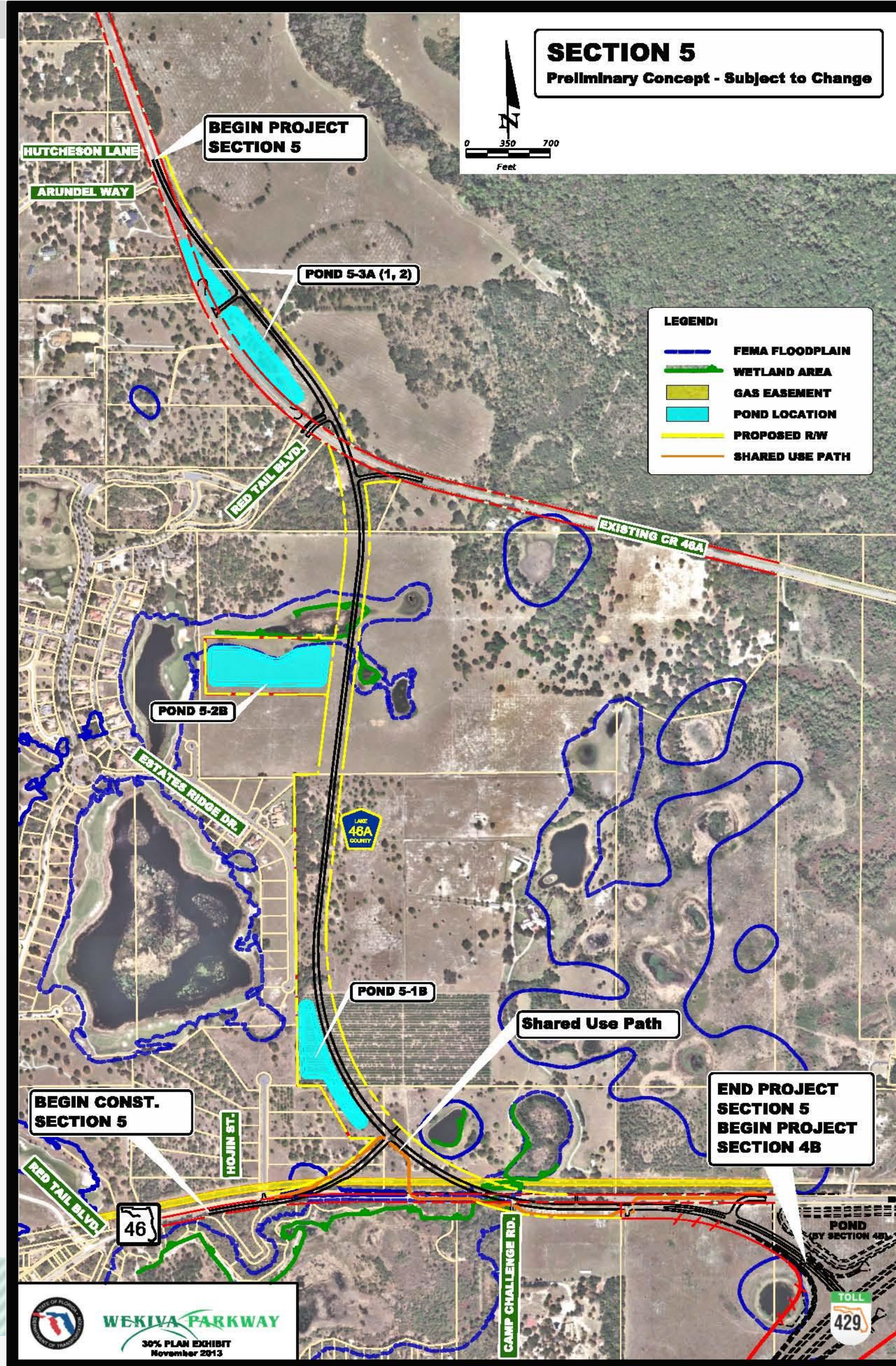


# Section 4A & 4B

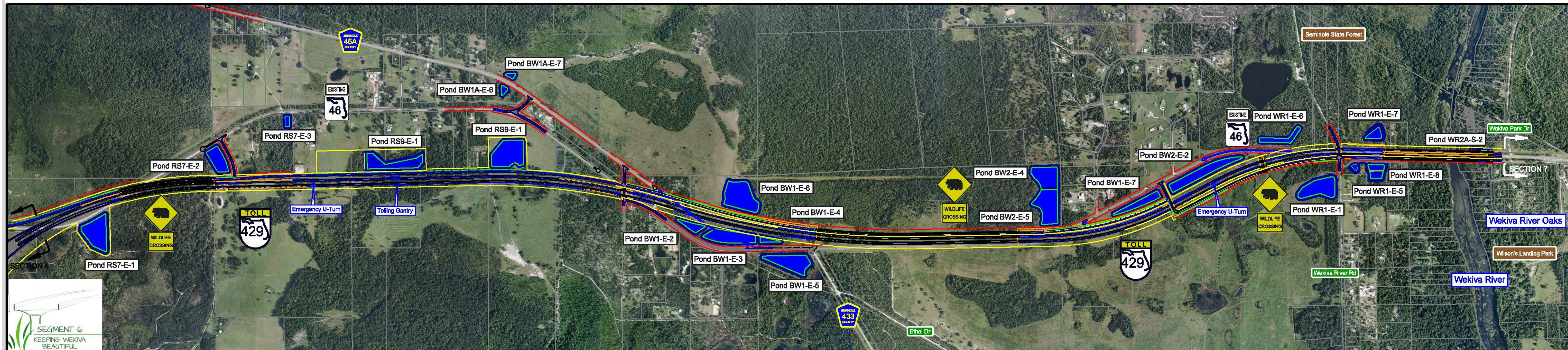




# Section 5



# Section 6



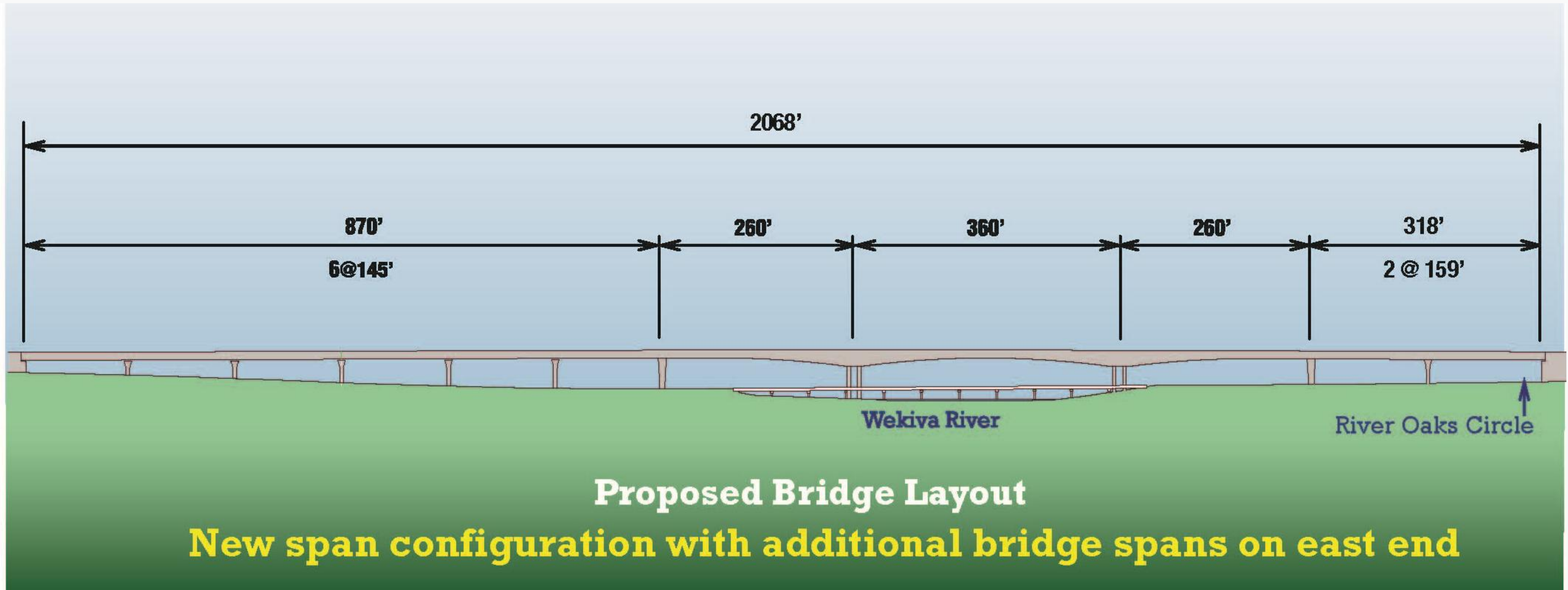
# Wekiva River Bridge - Profile



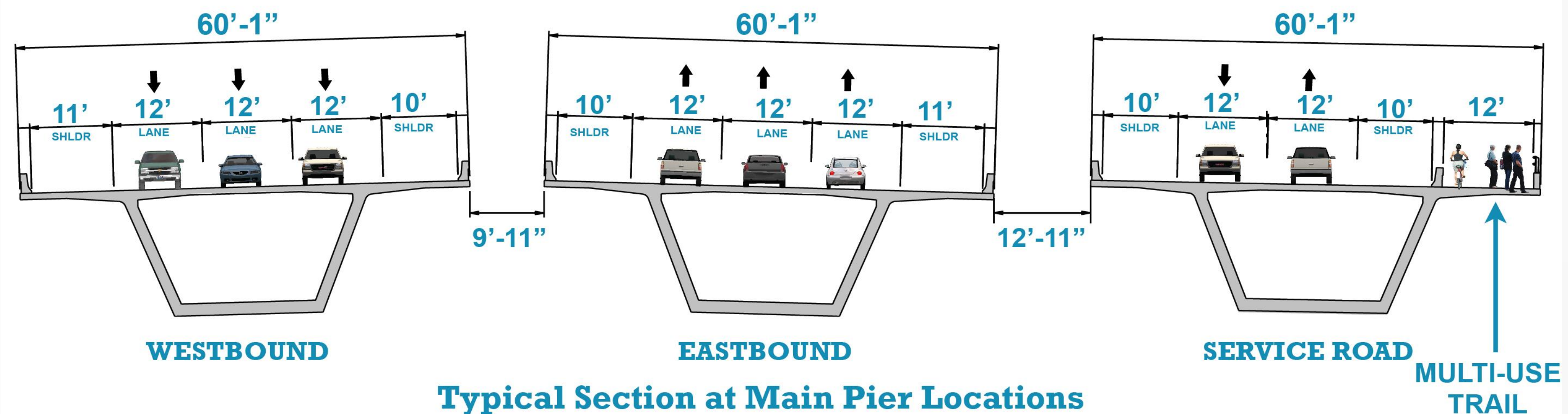
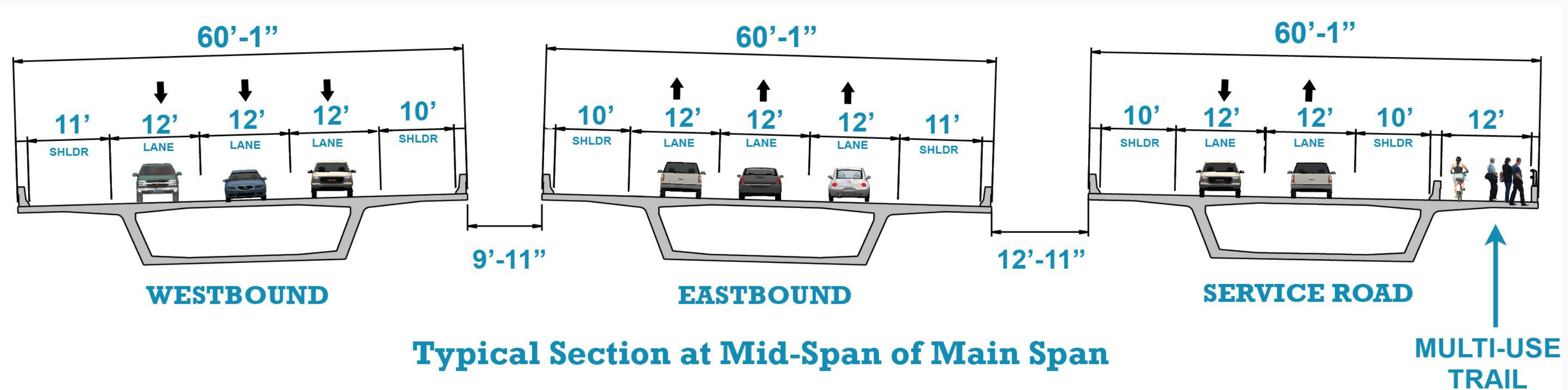
# Wekiva River Bridges – River User's View



# Wekiva River Bridge - Layout



# Wekiva River Bridge - Cross Sections

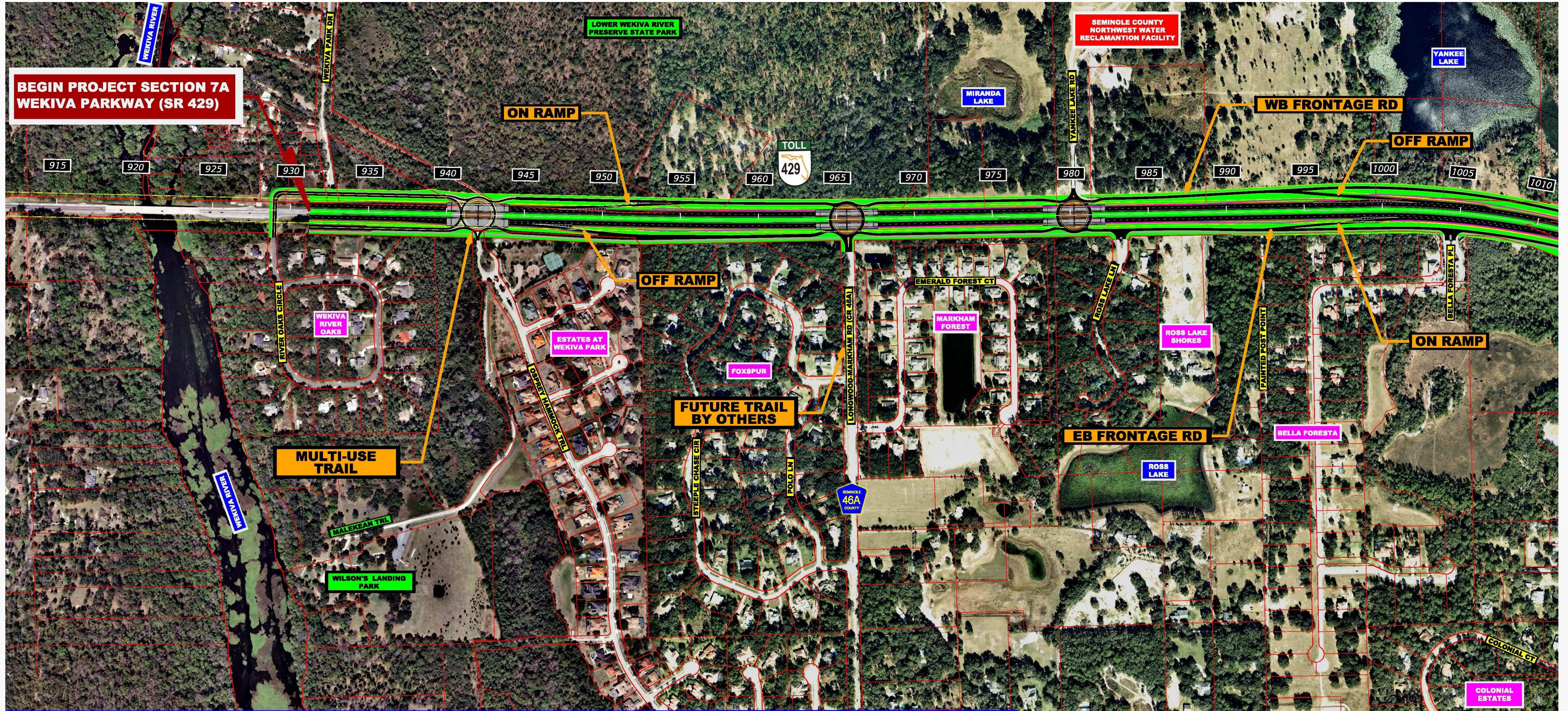



**Showing ultimate configuration.  
Parkway bridges will have 2 lanes in each direction  
for initial configuration.**

# Wekiva River – Ped Rail











# Section 7A - West




**WEKIVA PARKWAY (SR 429)**  
**SECTION 7A**

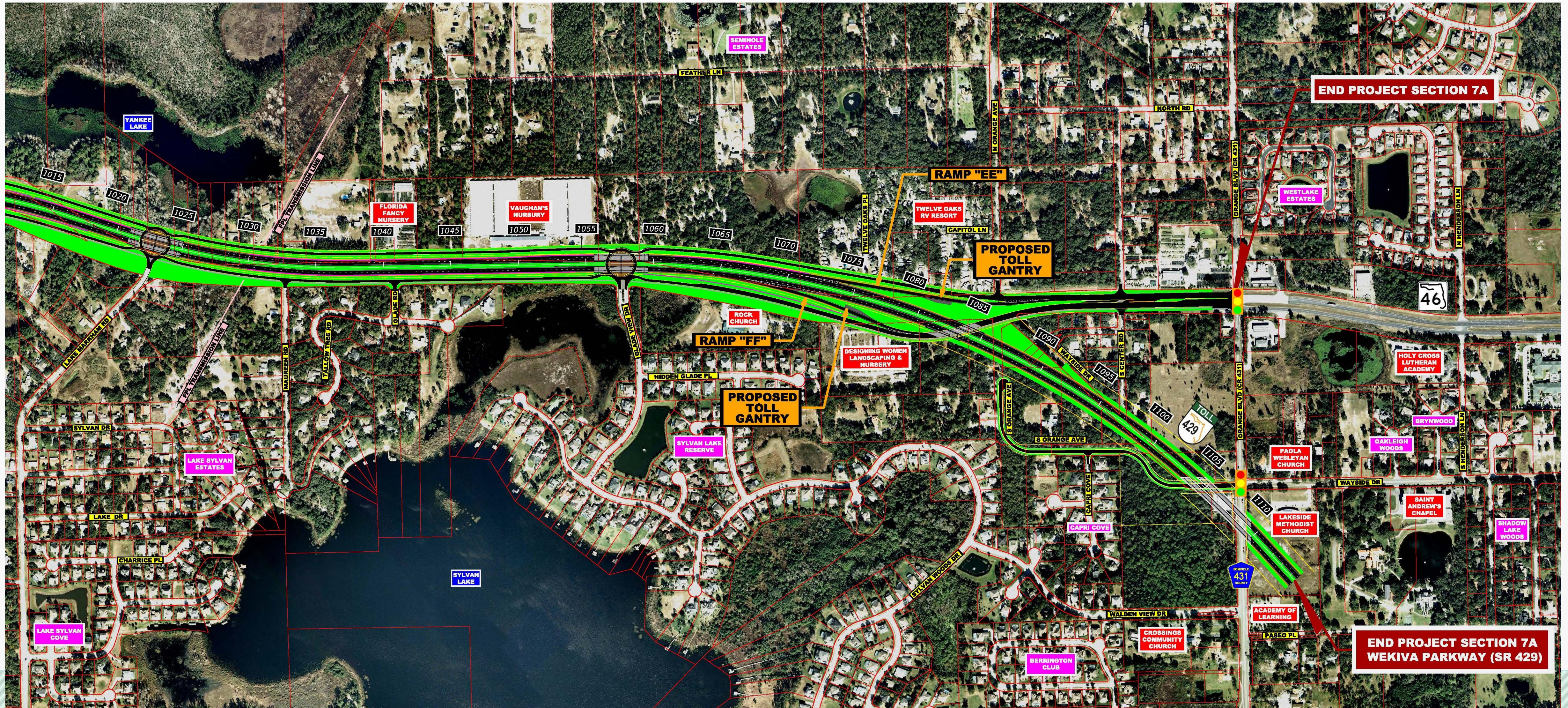
**LEGEND**

	PROPOSED ROADWAY		SOD		SIGNALIZED INTERSECTION
	PROPOSED BRIDGE		PROPOSED SIDEWALK & SHARED USE PATH		EXISTING ROW & PROPERTY LINE
	PROPOSED L/A ROW		PROPOSED ROW		

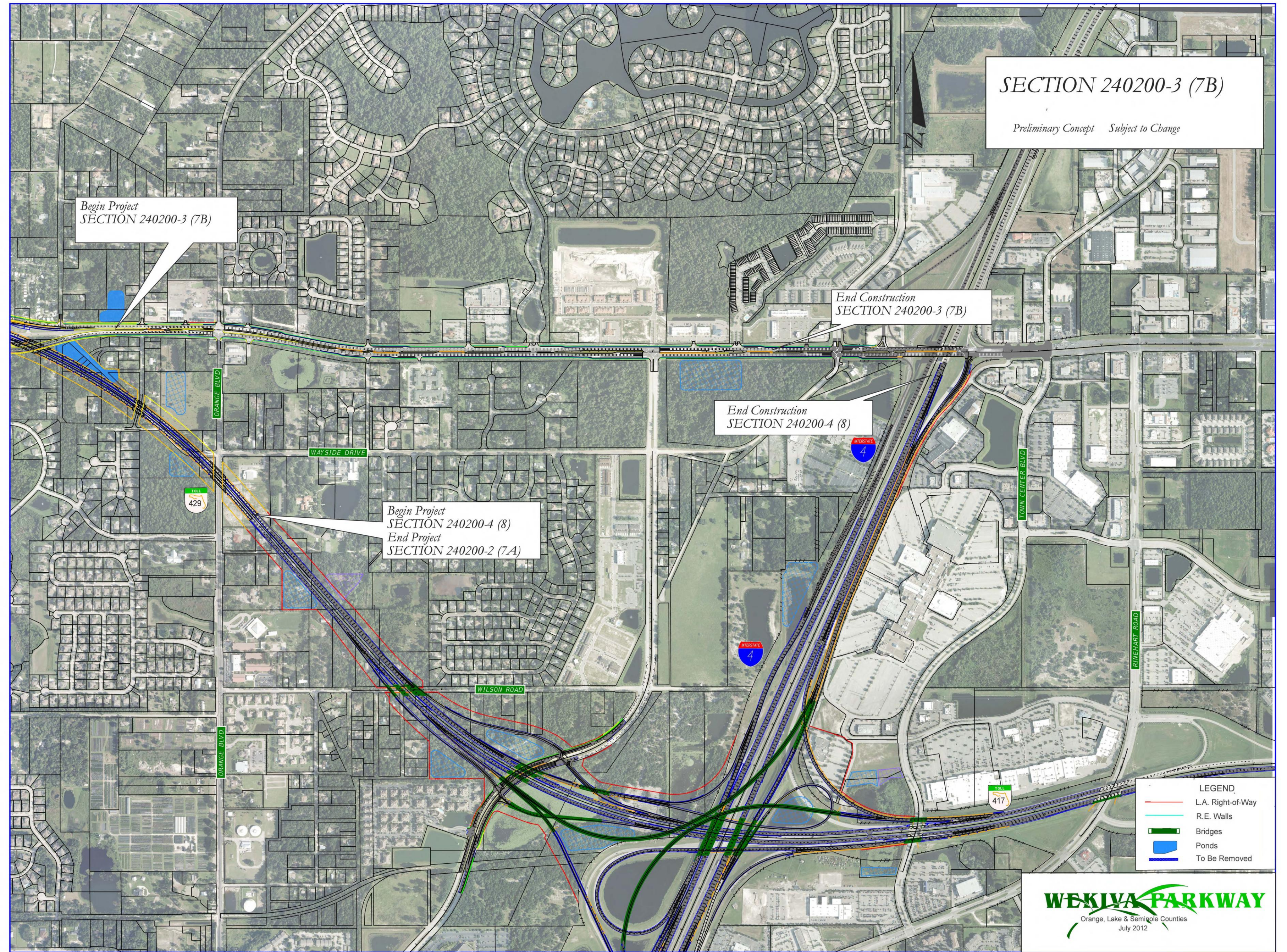




# Section 7A - East



# Sections 7B & 8



# Schedule Recap

The Wekiva Parkway will be completed and **open to traffic\***  
as follows:

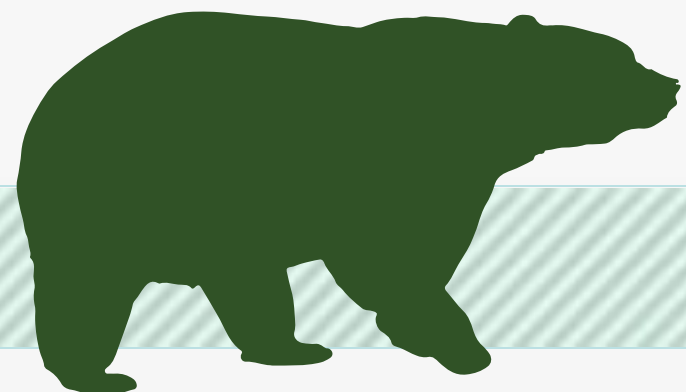
## Orlando-Orange County Expressway Authority Sections:

- 1A & 1B – Late 2016
- 2A, 2B & 2C – 2019

## Florida Department of Transportation Sections

- 3A, 3B, 5 & 7B – 2019
- 4A & 4B – Early 2015 (Under Construction)
- 6 – 2020
- 7A – 2020 - 2021
- 8 – 2021

\*Schedule Subject to Change



# What's Next?

- **Final Design: Completion 2015**
- **Opportunities for Community Input**
  - ✓ **Public Meetings: Section 5 & 6 – April 29, 2014**  
**Section 1A & 1B – Fall 2014**
  - ✓ **Community Presentations**
  - ✓ **Updates & Comments via Website: [www.wekivaparkway.com](http://www.wekivaparkway.com)**
- **First Section (4A & 4B) Open to Traffic – Early 2015**
- **First OOCEA Sections Begin Construction – Early 2015**



For More Information:

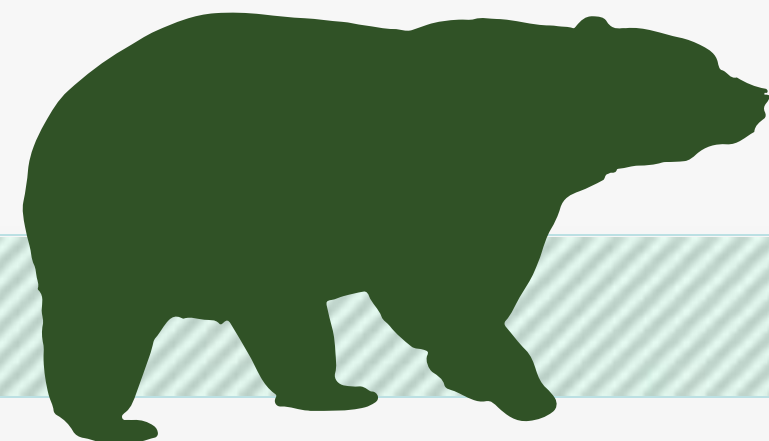
Mary Brooks

Public Involvement Coordinator

C: 407-694-5505

E: [Info@wekivaparkway.com](mailto:Info@wekivaparkway.com)

W: [www.wekivaparkway.com](http://www.wekivaparkway.com)



**WEKIVA PARKWAY**  
Completing Central Florida's Beltway

**TOLL 429**

HOME | FDOT PROJECTS | OOCEA PROJECTS | PROJECTS BY COUNTY | PROJECT HISTORY | FAQ | CONTACT US

**WELCOME**

On behalf of the Florida Department of Transportation and the Orlando-Orange County Expressway Authority, thank you for your interest in the Wekiva Parkway design and construction projects. The Wekiva Parkway (State Road 429) is a cooperative effort between these agencies and the Florida's Turnpike Enterprise.

The Wekiva Parkway (SR 429) would connect to SR 417, completing the beltway around northwest metropolitan Orlando. This estimated \$1.5 billion project includes \$500 million of non-toll road improvements including:

- Building seven (7) miles of four- and six-laning of SR 46 in Lake and Seminole Counties
- Rebuilding the US 441/SR 46 interchange in Mount Dora
- Relocating the CR 46A connection to SR 46 to provide improved wildlife connectivity and additional local road system benefits

[Click here](#) to view the overall project schedule. Please understand schedules are subject to change due to a host of variables.

**WEKIVA PARKWAY PROJECT SECTION MAP**

Click on a Section Number for Project Details.

[Click here to view larger map](#)

The 25-mile tolled expressway will provide travel alternatives and relieve US 441, SR 46 and other area roads of traffic congestion resulting from growth and travel between Orange, Lake and Seminole Counties.

Authorized in 2004 by the Wekiva Parkway and Protection Act (Chapter 369, Part III, F.S.), this expressway has been heralded as a shining example for transportation planning through an environmentally sensitive area. Development of the Wekiva Parkway has included setting aside more than 3,400 acres of

**LATEST NEWS**

Click on text for details

August 2013  
OOCEA Reaches 60% Design Plans on Section 2A

July 2013  
FDOT Kicks Off Design for Section 7A

July 2013  
Gov. Scott Kicks Off Wekiva Parkway - July 10, 2013

July 2013  
150 Attend Section 3A & 3B Public Meeting Open House - July 11, 2013

June 2013  
Nearly 200 Attend FDOT Section 8 Public Meeting - June 11, 2013

May 2013  
Lake Co. Commissioners Adopt Recommended CR 46A Alignment

**PUBLIC MEETING - Sections 3A & 3B Preliminary Design Open House Reop**

**PROJECT DOCUMENTS**

**PRESENTATIONS**

**PRESS RELEASES**

All News

**CONTACT US**

Mary Brooks  
Public Information Officer  
[Info@wekivaparkway.com](mailto:Info@wekivaparkway.com)  
407-694-5505

twitter

facebook

# WEKIWA PARKWAY

Completing Central Florida's Beltway



**Thank You!**  
**Questions?**

