

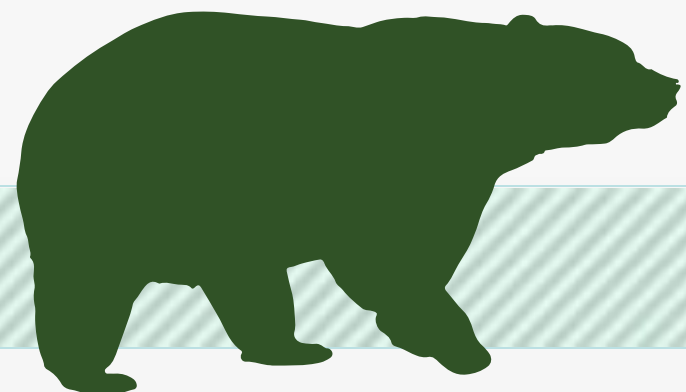


A Regional Transportation Solution

**MetroPlan Orlando
Board Update
March 11, 2015**



Funding Partners



WEKIVA PARKWAY

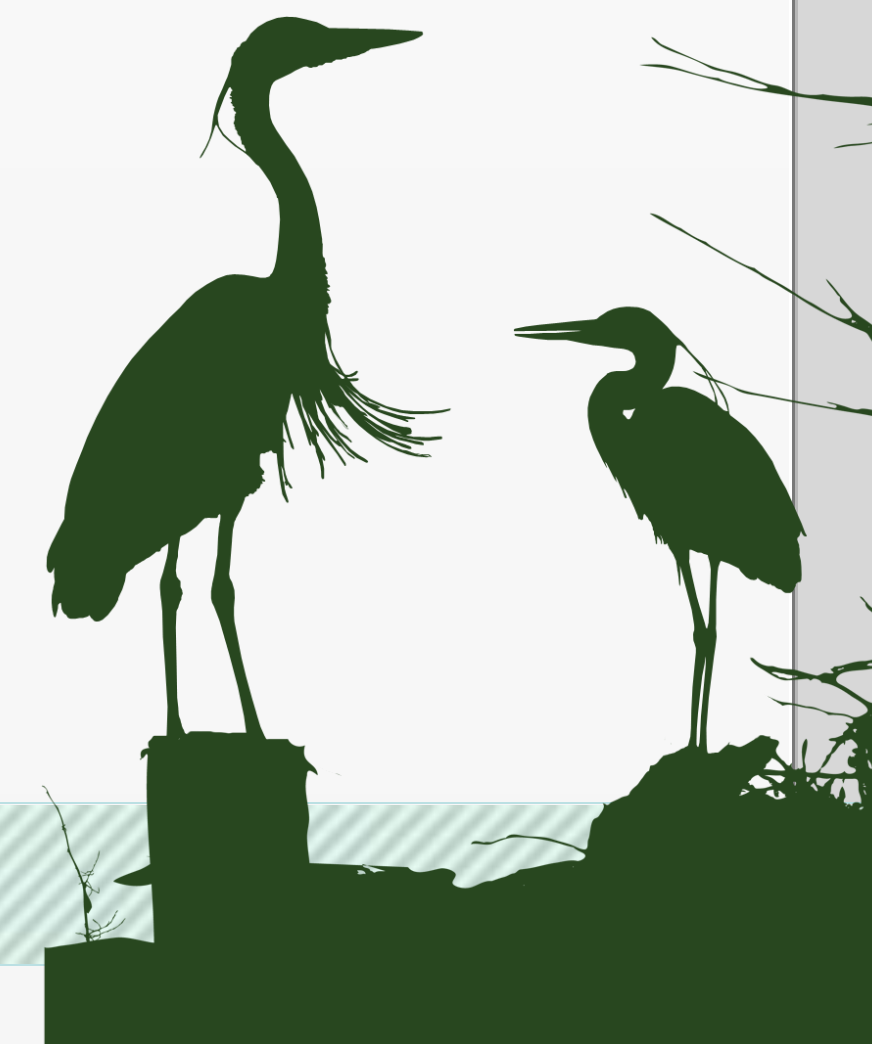


WEKIVA PARKWAY

Project Description

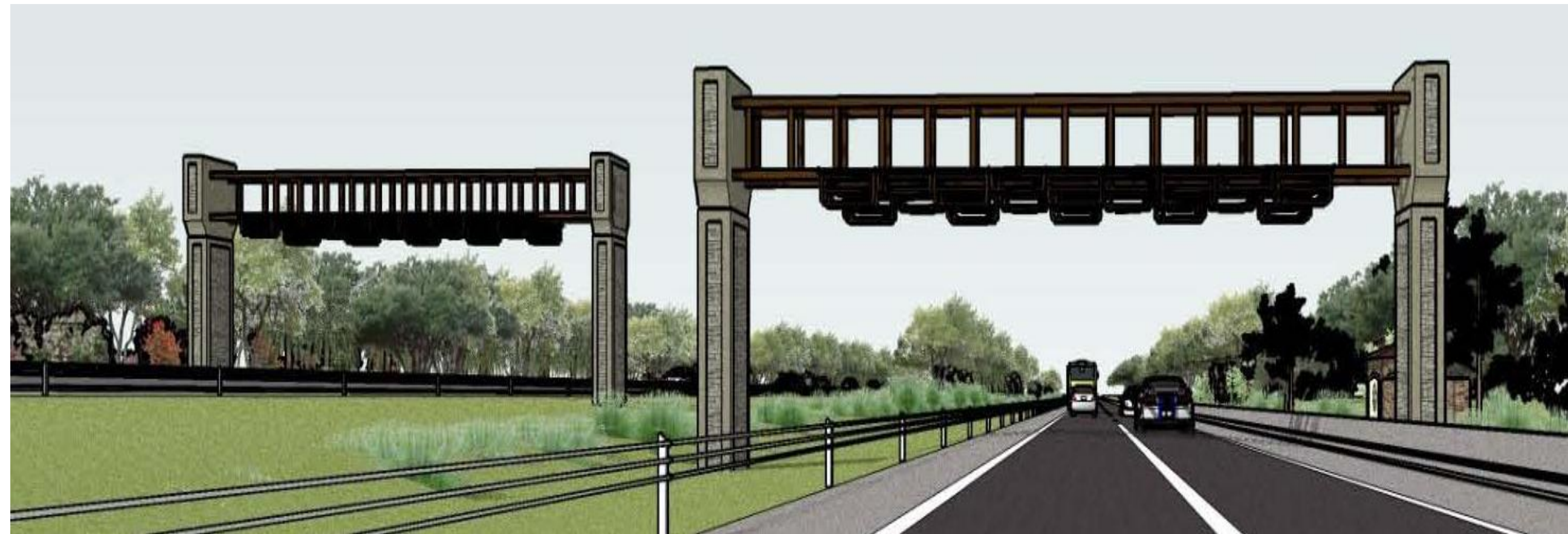
- **\$1.6 Billion Completion of Central Florida's Beltway**
- **25-mile Toll Road**
- **Non-Toll Road Improvements:**
 - **Improving SR 46 in Lake & Seminole Counties**
 - **Rebuilding the US 441/SR 46 Interchange in Mount Dora**
 - **Relocating CR 46A to Improve Wildlife Connectivity**
 - **Parallel Service Roads in East Lake & Seminole Counties**
- **Multi-use Trail (Parts of East Lake & Seminole Counties)**

WEKIIVA PARKWAY



All Electronic Tolling (AET)

- First in Central Florida
 - No Toll Plazas – No Cash
 - Enhances Safety
 - Maximizes Convenience
 - AET Info on Website
- Reduces Noise & Pollution
 - Improves Mobility
 - Saves Money



Protecting Nature

- **Wekiva River: Outstanding Florida Water & National Wild & Scenic River**
- **Authorized by the 2004 Wekiva Parkway and Protection Act**
 - **Setting Aside More than 3,400 Acres for Conservation**
 - **Largely Elevated to Reduce Accidents Between Vehicles & Wildlife**
 - **Several Wildlife Bridges**
 - **Few Interchanges (Reduce Development)**



Wekiva Parkway Trail

10 Miles

Concurrent: Sections 5, 6 & 7A

✓ **2017-2021**

Separate: Sections 4A & 4B

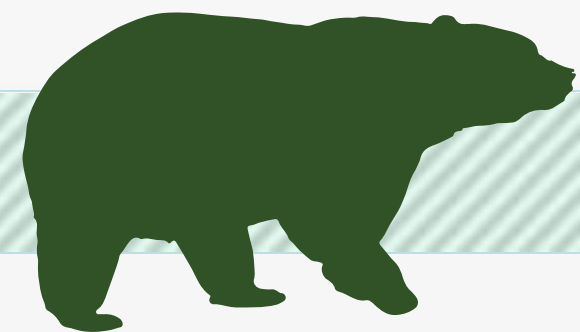
✓ **2017-2021**

Connections:

✓ **West Orange Trail Extension**

✓ **Lake-Wekiva Trail (Planned)**

✓ **Seminole-Wekiva Trail Extension**



PROJECT ECONOMIC IMPACT

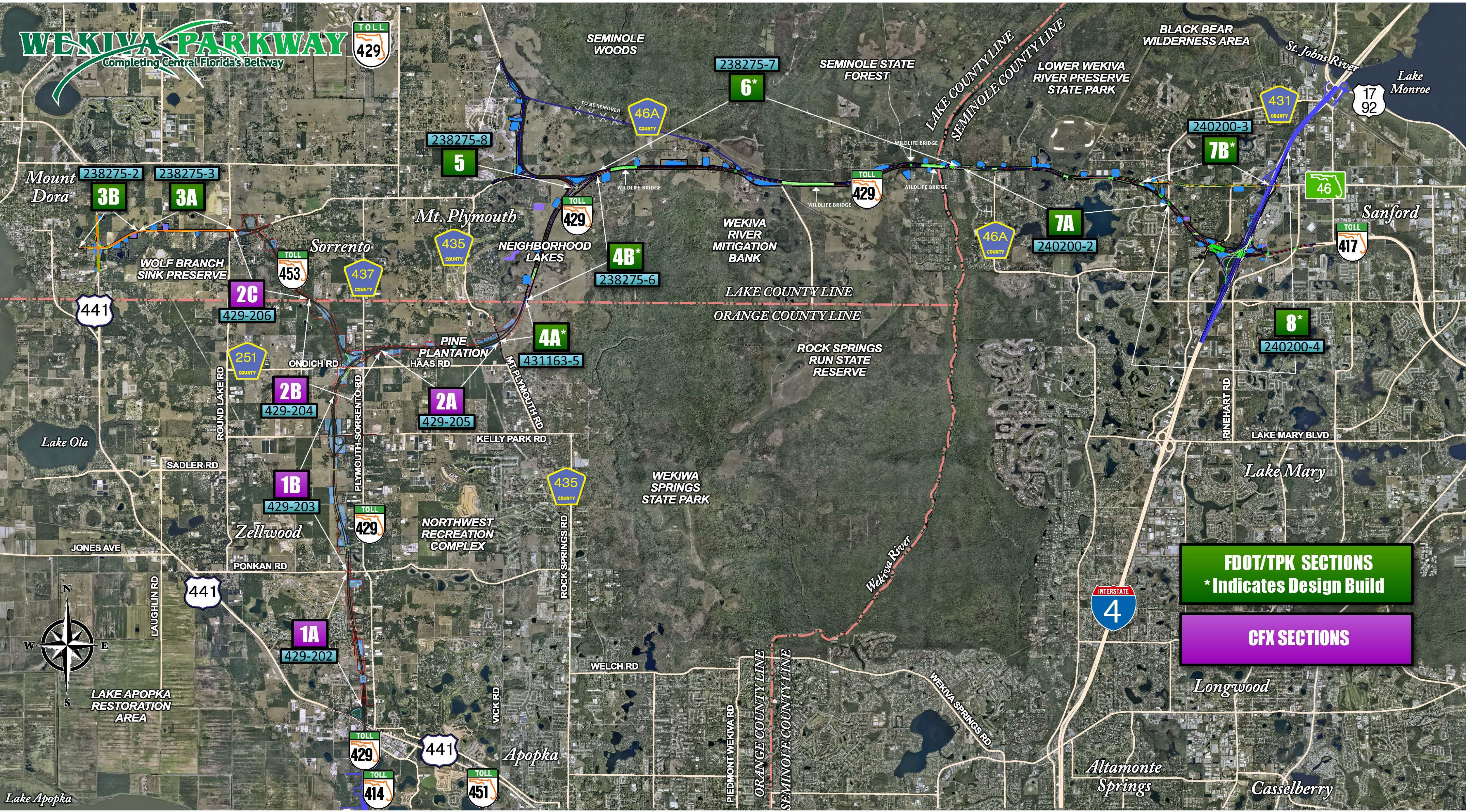
At an estimated cost of \$1.6 Billion for Engineering & Construction, the Wekiva Parkway is Projected to Provide:

Construction Related Jobs	12,272
Supporting Industries Jobs	5,570
Induced Employment Jobs	17,983

***Estimated Total Jobs 35,825**

WEKIVA PARKWAY

Completing Central Florida's Beltway



FDOT/TPK SECTIONS
* Indicates Design Build

CFX SECTIONS



Lake Apopka

Design Status

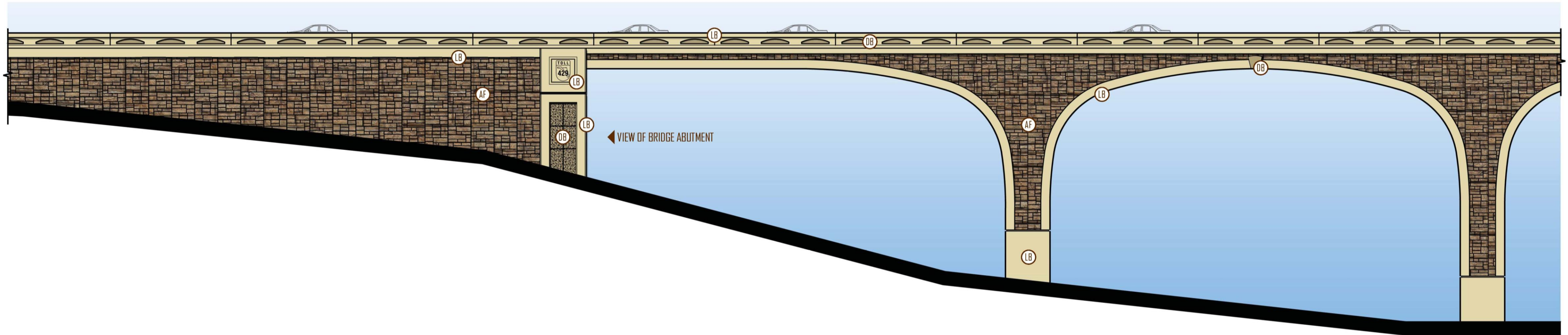
SECTION	MILESTONE	SUBMITTAL SCHEDULE
1A	100%	July 2014
1B	100%	June 2014
2A	100%	June 2014
2B	100%	March-April 2015
2C	100%	April 2015
3A	100%	December 2014
3B	90%	March 2015
5	100%	March 2015
6	60%	February 2015
7A	60%	February 2015
7B	Design Starts 2016	Construction 2018
8	Design-Build	Construction 2018



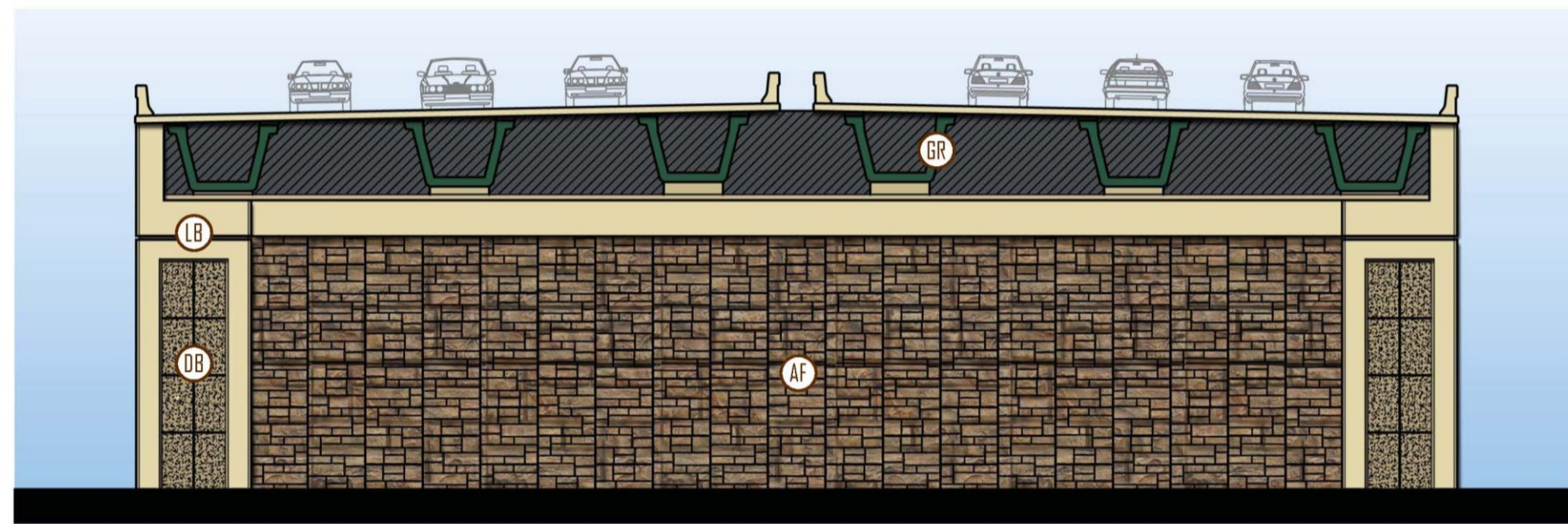
Central Florida Expressway Authority Sections



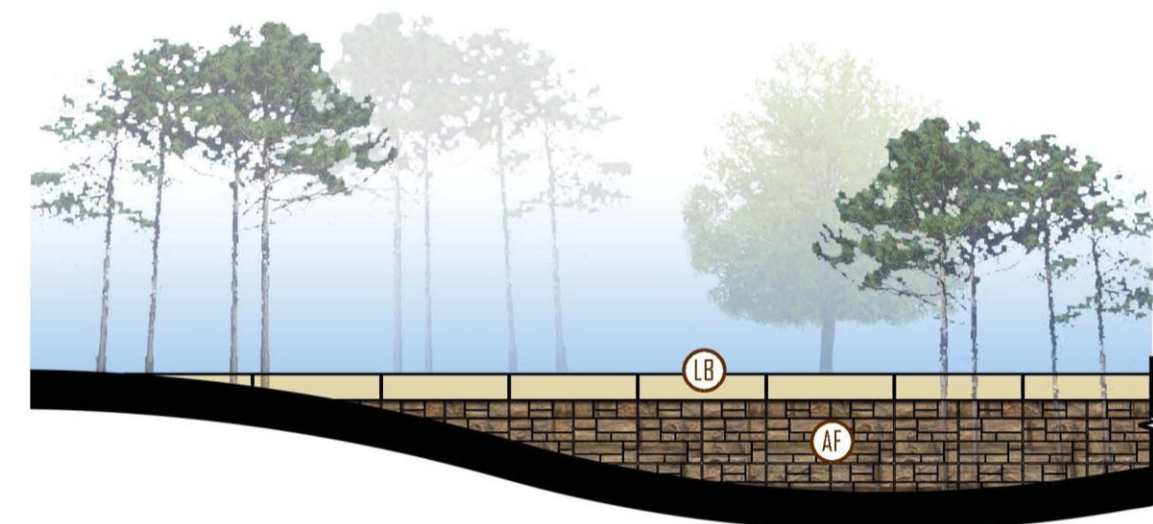
Aesthetics Plans



LOW AREA/LAKE VICTOR - BRIDGE MSE WALL ELEVATION NOT TO SCALE



LOW AREA/LAKE VICTOR
BRIDGE MSE WALL ABUTMENT ELEVATION NOT TO SCALE



TIERED / LANDSCAPE WALL NOT TO SCALE

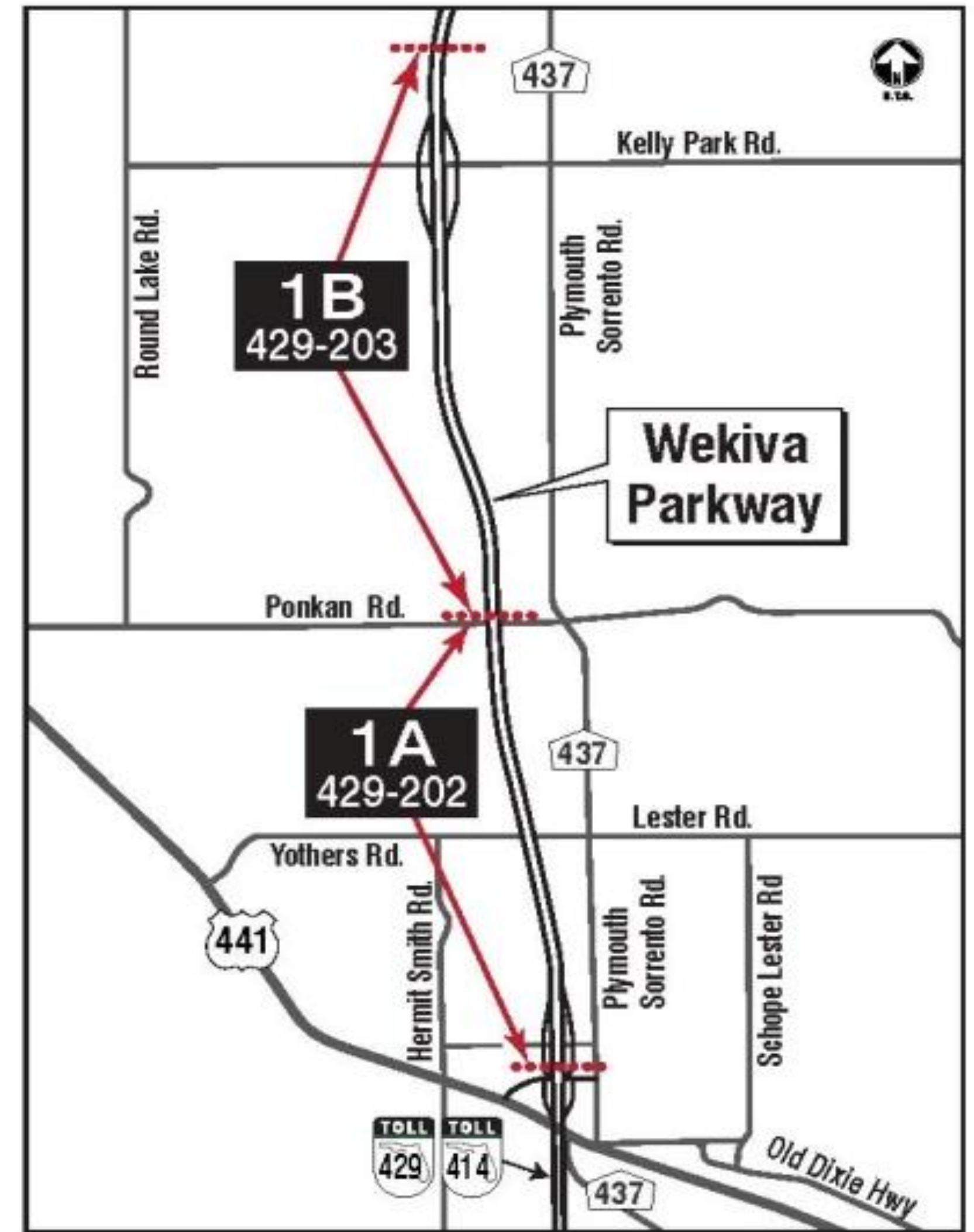
LEGEND

- LARGE ASHLAR FORMLINER
 PATTERN: CUSTOMROCK #1501-R2
 MAX. RELIEF = 2"
 BASE COLOR: FED. COLOR #33510
 HIGHLIGHTS: #SW-2195 [50-60%]
 #SW-2124 [10-20%]
 #SW-2070 [WASH COAT]
- ⓁⓁ LIGHT BROWN (FED. COLOR #33690)
 FINISH: SMOOTH / LIGHT SANDBLAST
- ⓁⓁ DARK BROWN (FED. COLOR #33446)
 FINISH: SMOOTH / LIGHT SANDBLAST
- ⓁⓁ DARK GREEN (FED. COLOR #34227)
- ⓁⓁ DARK BRONZE (FED. COLOR #20062)

NOTES: ALL COLORS ARE FEDERAL STANDARD 595B (7/1994) COLORS OR SHERWIN WILLIAMS (SW) COLORS.

CFX Sections 1A & 1B Update

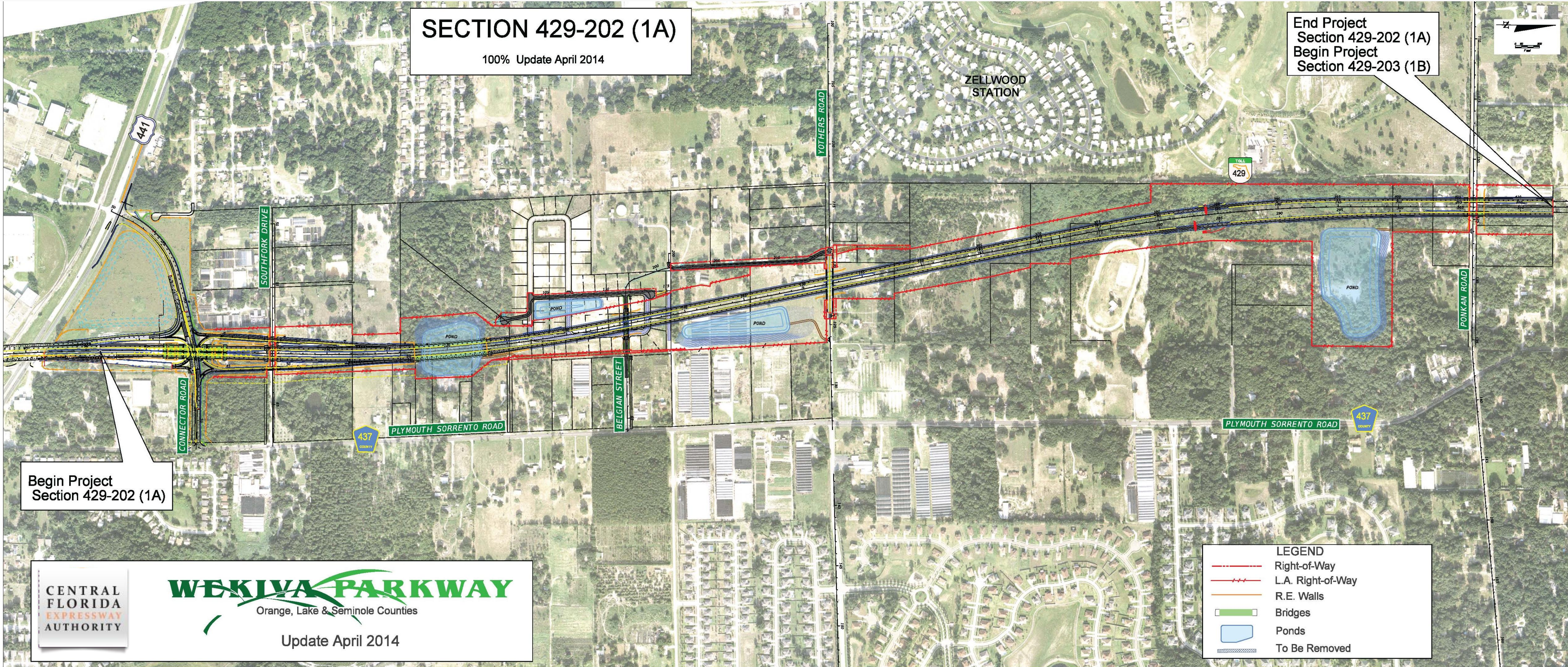
- ✓ Design Complete
- ✓ CEI 's Selected: RK&K, GAI
- ✓ Ad for Contractor Bid – Feb. 9 (1A)
- ✓ Construction Start Section 1A: Summer 2015



Section 1A

SECTION 429-202 (1A)
100% Update April 2014

End Project
Section 429-202 (1A)
Begin Project
Section 429-203 (1B)



Begin Project
Section 429-202 (1A)

CENTRAL FLORIDA EXPRESSWAY AUTHORITY

WEKIVA PARKWAY
Orange, Lake & Seminole Counties

Update April 2014

LEGEND

- Right-of-Way
- - - - L.A. Right-of-Way
- R.E. Walls
- ▬ Bridges
- ▭ Ponds
- ▭ To Be Removed

Section 1B

SECTION 429-203 (1B)

90% Update October 2013 Subject to Change

Begin Project
Section 429-203 (1B)
End Project
Section 429-202 (1A)

End Project
Section 429-203 (1B)
Begin Project
Section 429-204 (2B)



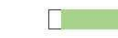


CENTRAL
FLORIDA
EXPRESSWAY
AUTHORITY

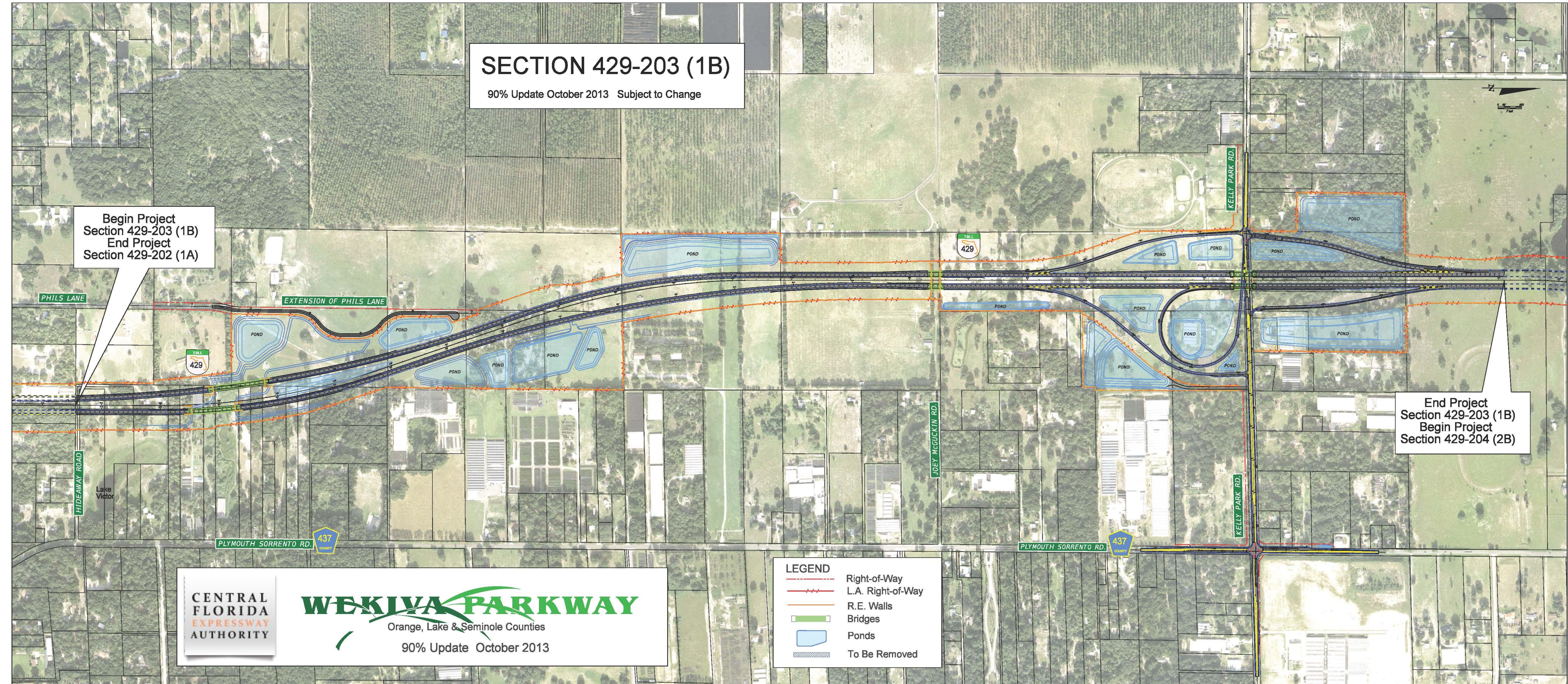
WEKIVA PARKWAY

Orange, Lake & Seminole Counties

90% Update October 2013

LEGEND

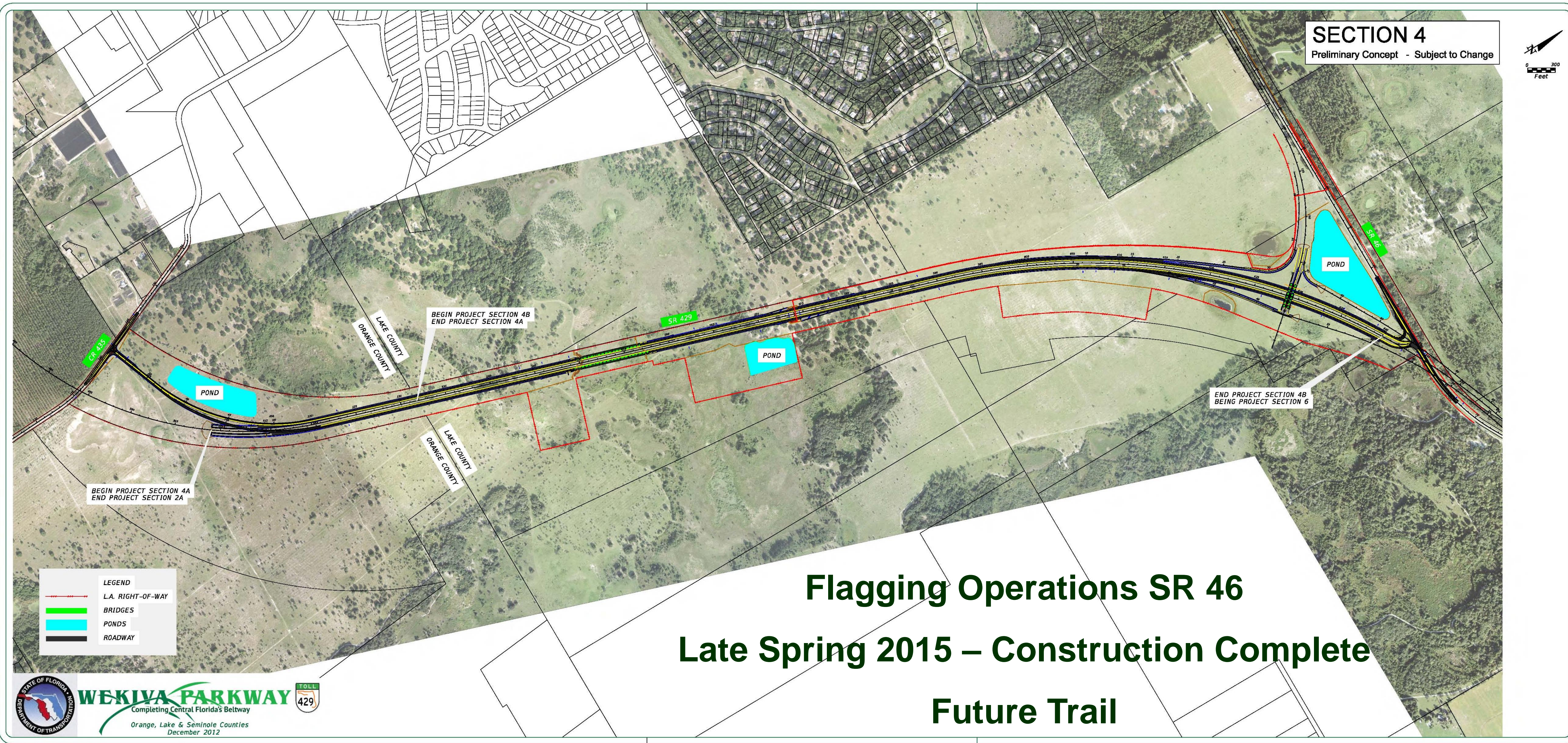
-  Right-of-Way
-  L.A. Right-of-Way
-  R.E. Walls
-  Bridges
-  Ponds
-  To Be Removed



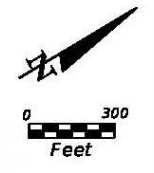
FDOT Sections



Section 4A & 4B



SECTION 4
Preliminary Concept - Subject to Change



BEGIN PROJECT SECTION 4A
END PROJECT SECTION 2A

BEGIN PROJECT SECTION 4B
END PROJECT SECTION 4A

END PROJECT SECTION 4B
BEING PROJECT SECTION 6

LEGEND

- L.A. RIGHT-OF-WAY
- BRIDGES
- PONDS
- ROADWAY

Flagging Operations SR 46
Late Spring 2015 – Construction Complete
Future Trail

STATE OF FLORIDA
DEPARTMENT OF TRANSPORTATION

WEKIVA PARKWAY
Completing Central Florida's Beltway
Orange, Lake & Seminole Counties
December 2012

TOLL 429

Sections 4A & 4B



Pavement, street lights and wildlife fencing on Section 4A near CR 435 (Mt Plymouth Road)



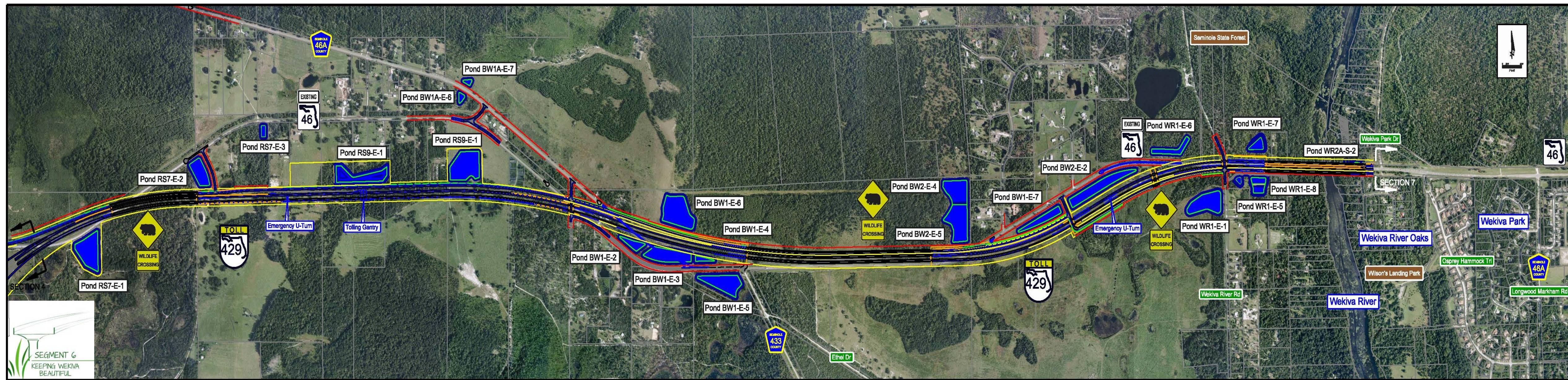
Sections 4A & 4B



Sections 4A & 4B



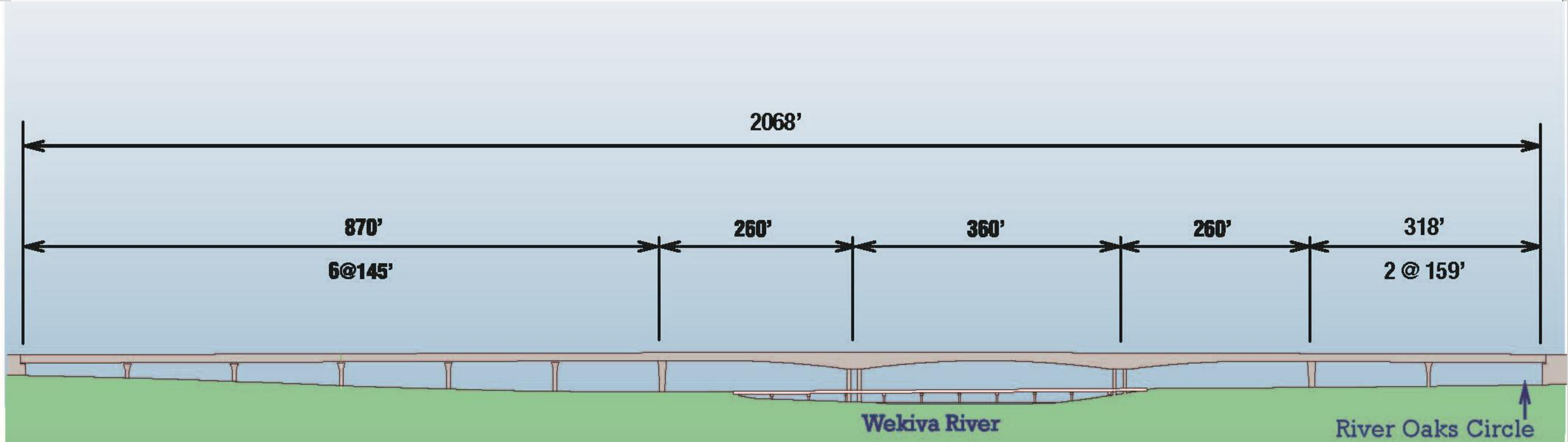
Section 6



Wekiva River Bridge - Profile



Wekiva River Bridge - Layout



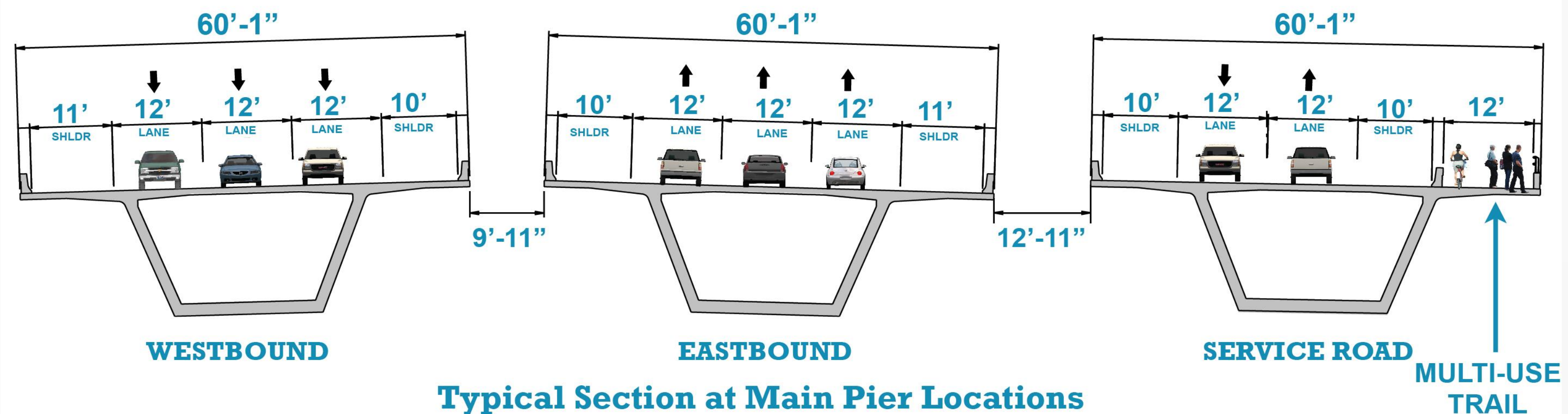
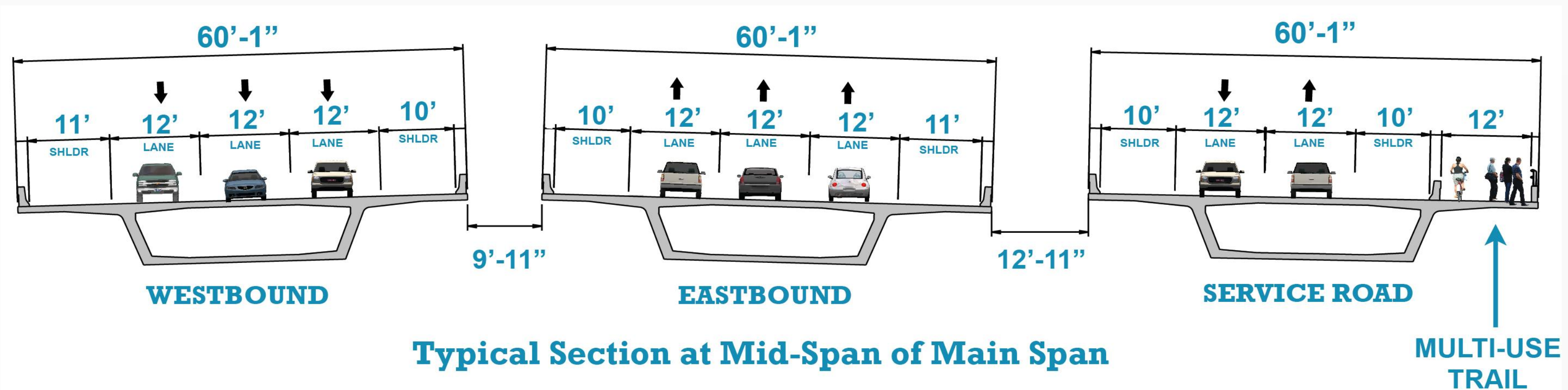
Proposed Bridge Layout

New span configuration with additional bridge spans on east end

Wekiva River Bridges – River User's View

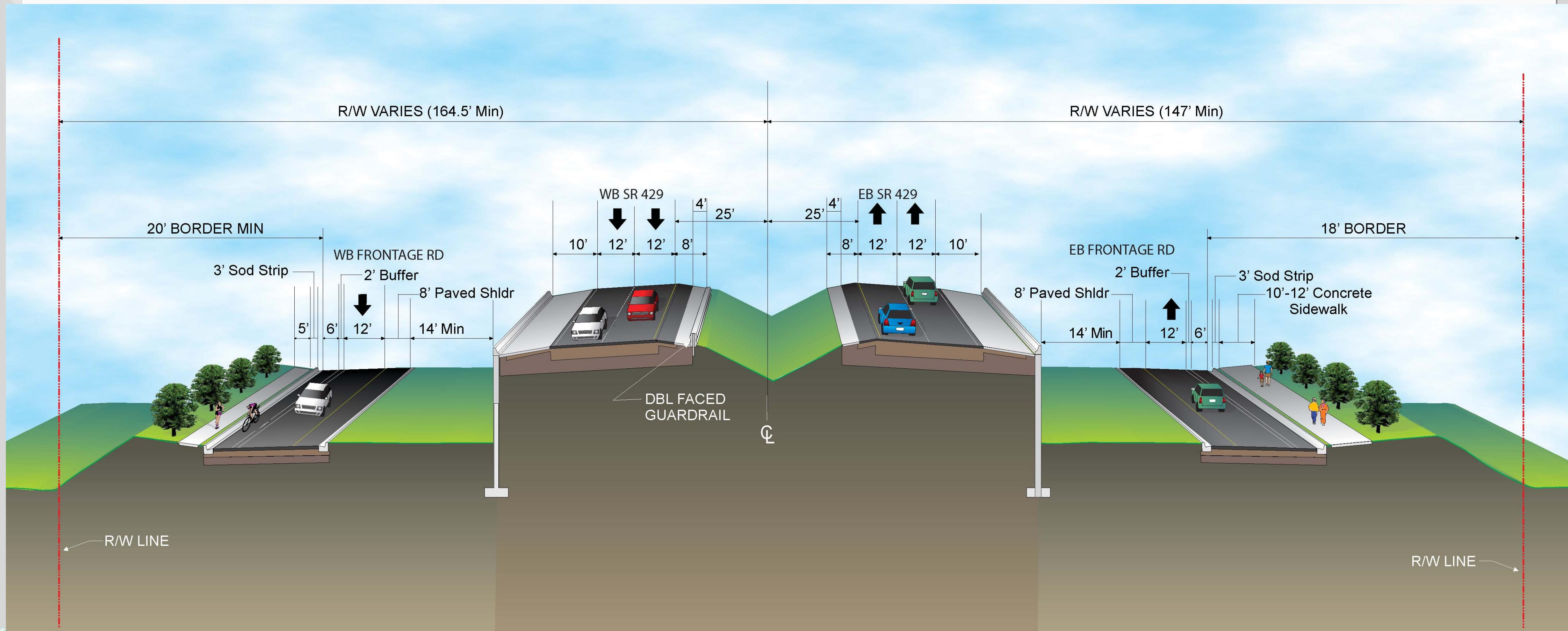


Wekiva River Bridge - Cross Sections



*Showing ultimate configuration.
Parkway bridges will have 2 lanes in each direction
for initial configuration.*

Section 7A – Typical Section



Section 7A – Roundabout Concept



Lighting is planned at roundabout approaches & under bridges. No lighting on the parkway mainline.

WEKIWA PARKWAY

Completing Central Florida's Beltway

2020

2019-20

2020-21

2021

2019

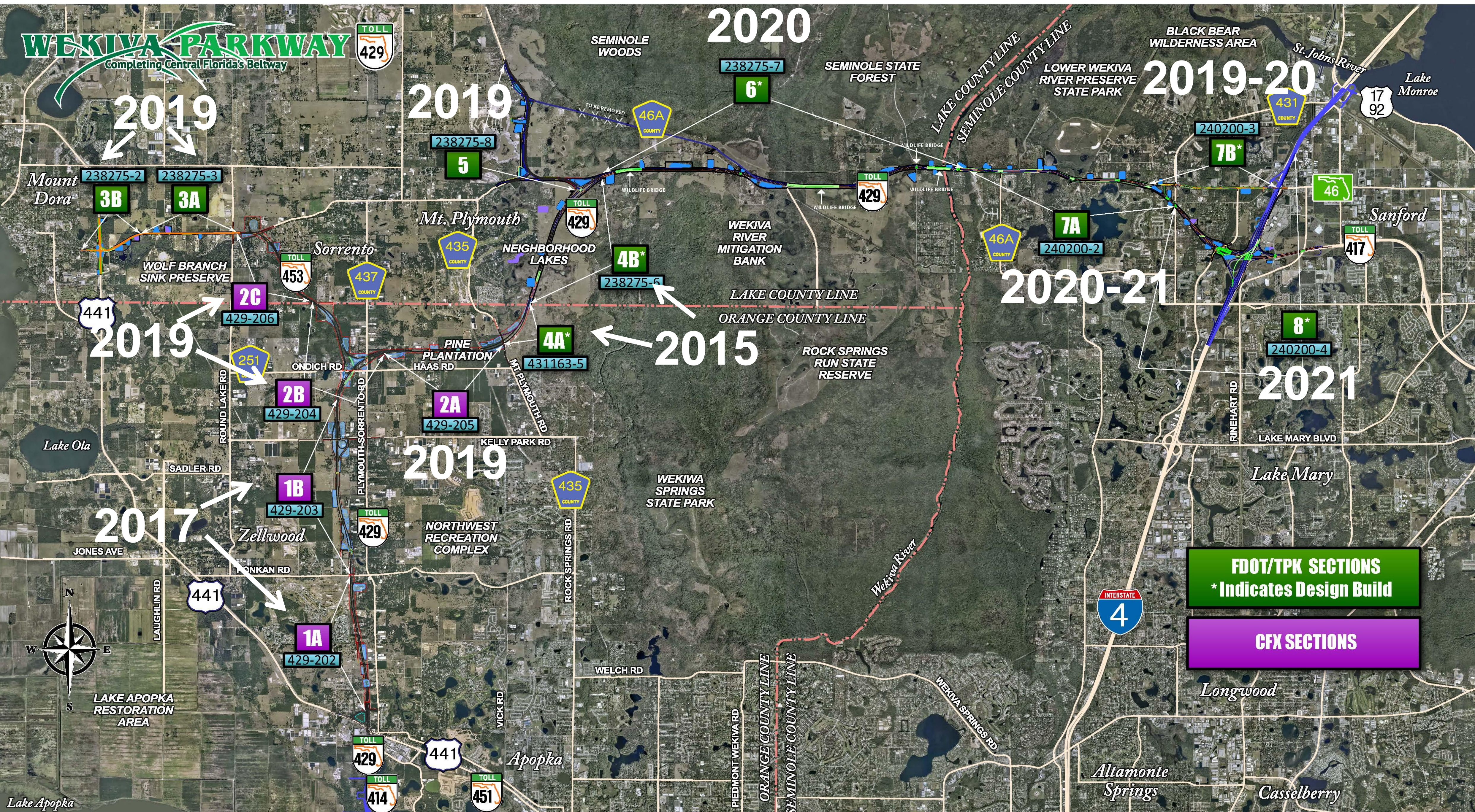
2019

2019

2015

2017

2019



FDOT/TPK SECTIONS
* Indicates Design Build

CFX SECTIONS



Lake Apopka Restoration Area

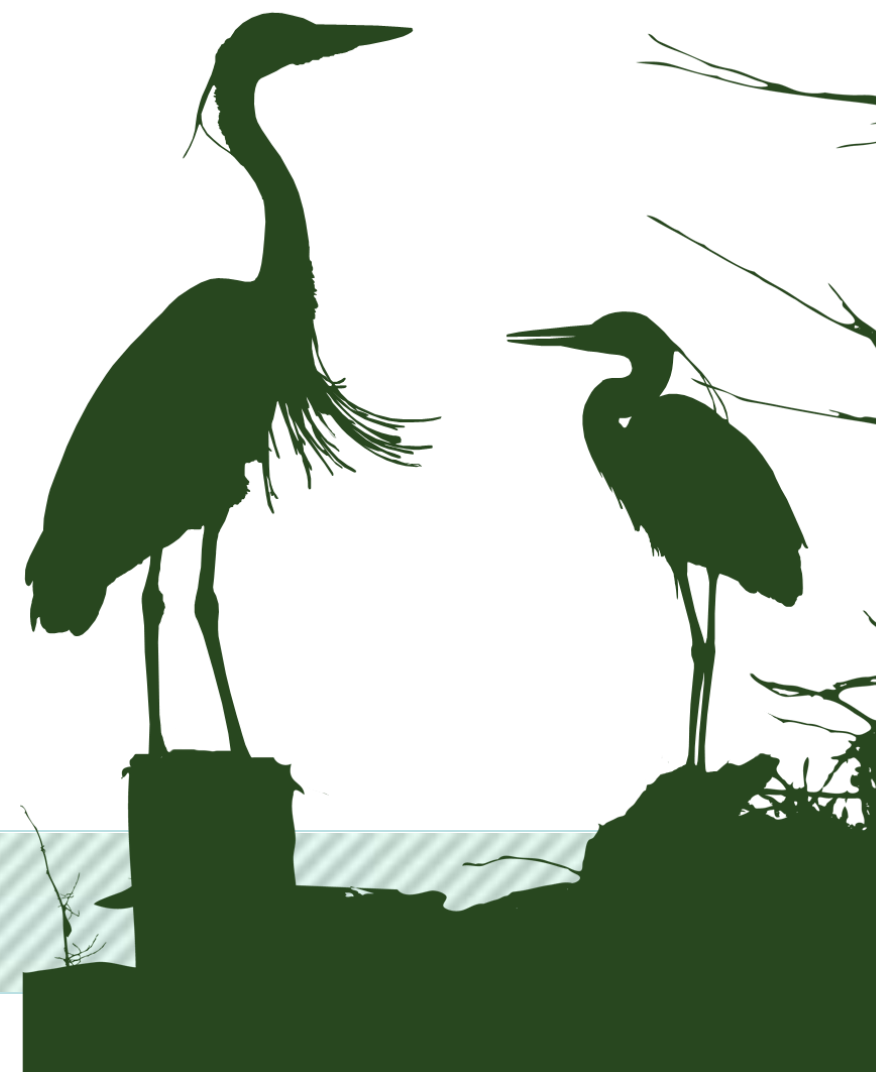
Lake Apopka

What's Next?

- **Public Meetings: Sections 5 & 6 – April 7, 2015**
Camp Challenge, 530 p.m.-730 p.m.

Community Presentations

Updates via Website: www.wekivaparkway.com
- **First Section (4A & 4B) Open to Traffic – Summer 2015**
- **First CFX Sections Begin Construction – Summer 2015**



For More Information:

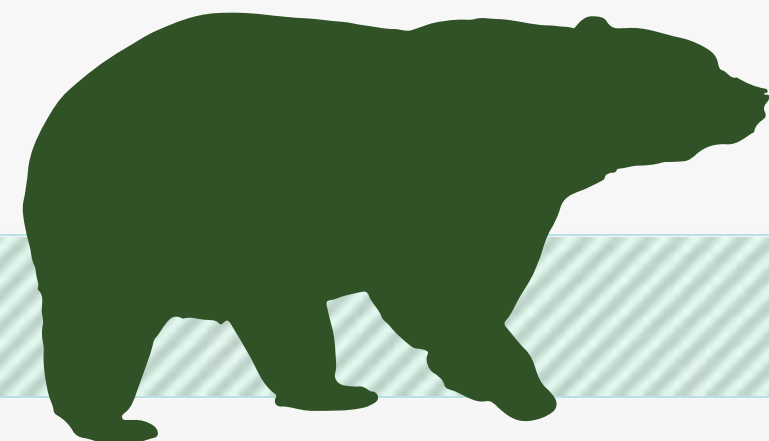
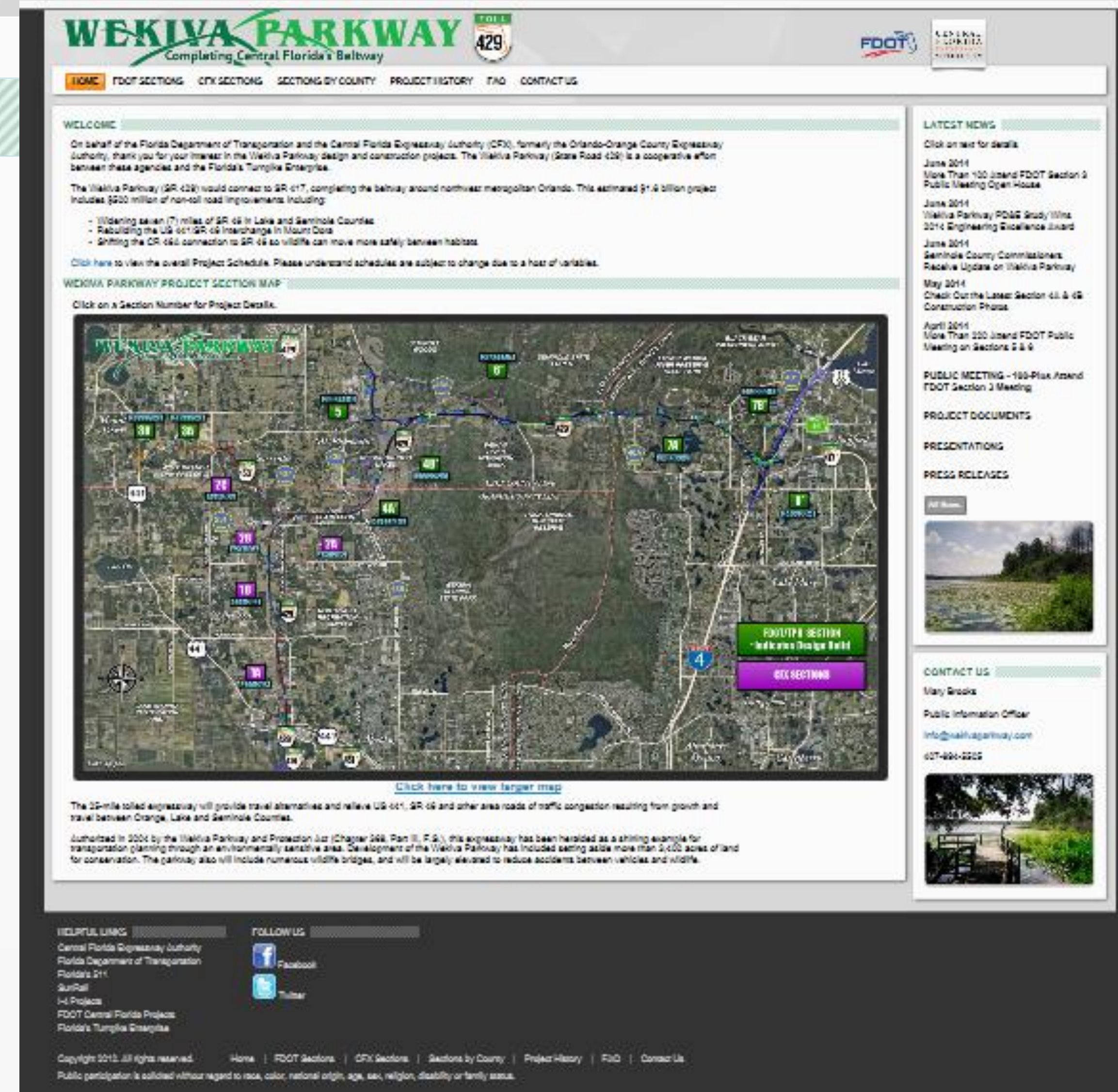
Mary Brooks

Public Information Officer

C: 407-694-5505

E: Info@wekivaparkway.com

W: www.wekivaparkway.com

WEKIVA PARKWAY
Completing Central Florida's Parkway

HOME | FDOT SECTIONS | CFY SECTIONS | SECTIONS BY COUNTY | PROJECT HISTORY | FID | CONTACT US

WELCOME

On behalf of the Florida Department of Transportation and the Central Florida Expressway Authority (CFE), formerly the Orlando-Orange County Expressway Authority, thank you for your interest in the Wekiva Parkway design and construction project. The Wekiva Parkway (State Road 429) is a cooperative effort between these agencies and the Florida's Turnpike Enterprise.


The Wekiva Parkway (SR 429) would connect to SR 417, completing the parkway around northeast metropolitan Orlando. This estimated \$1.4 billion project includes \$200 million of non-toll road improvements including:

- Widening seven (7) miles of SR 46 in Lake and Seminole Counties
- Rebuilding the US 601/SR 46 interchange in Mount Dora
- Shifting the CR 460 connection to SR 46 so wildlife can move more safely between habitats.

[Click here to view the overall Project Schedule.](#) Please understand schedules are subject to change due to a host of variables.

WEKIVA PARKWAY PROJECT SECTION MAP

Click on a Section Number for Project Details.



[Click here to view larger map](#)

The 32-mile tolled expressway will provide travel alternatives and relieve US 601, SR 46 and other area roads of traffic congestion resulting from growth and travel between Orange, Lake and Seminole Counties.

Authorized in 2004 by the Wekiva Parkway and Protection Act (Chapter 269, Part II, F.S.), this expressway has been heralded as a shining example for transportation planning through an environmentally sensitive area. Development of the Wekiva Parkway has included setting aside more than 2,000 acres of land for conservation. The parkway also will include numerous wildlife bridges, and will be largely elevated to reduce accidents between vehicles and wildlife.

HELPFUL LINKS

- Central Florida Expressway Authority
- Florida Department of Transportation
- Florida's Turnpike Enterprise
- SunRail
- I-4 Project
- FDOT Central Florida Project
- Florida's Turnpike Enterprise

FOLLOW US

- Facebook
- Twitter

Copyright 2012. All rights reserved. Home | FDOT Sections | CFY Sections | Sections by County | Project History | FID | Contact Us
Public participation is solicited without regard to race, color, national origin, age, sex, religion, disability or family status.

LATEST NEWS

Click on text for details.

- June 2014
More Than 100 Attend FDOT Section 3 Public Meeting Open House
- June 2014
Wekiva Parkway PD&E Study Wins 2014 Engineering Excellence Award
- June 2014
Seminole County Commissioners Receive Update on Wekiva Parkway
- May 2014
Check Out the Latest Section 43 & 45 Construction Photos
- April 2014
More Than 200 Attend FDOT Public Meeting on Sections 2 & 9

PUBLIC MEETING - 100-Plus Attend FDOT Section 3 Meeting

PROJECT DOCUMENTS

PRESENTATIONS

PRESS RELEASES

CONTACT US

Mary Brooks
Public Information Officer
Info@wekivaparkway.com
407-694-5505





Thank You!

Questions?

