

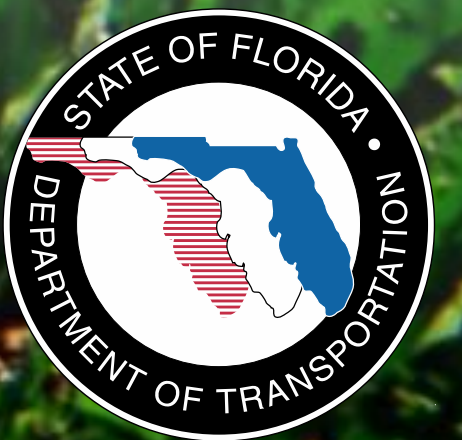
WEKIWA PARKWAY

Completing Central Florida's Beltway



A Regional Transportation Solution

Orange County Board of County Commissioners
March 26, 2013



Project Description

- **\$1.7 Billion Completion of Central Florida's Beltway**
- **25-mile Toll Road**
- **Non-Toll Road Improvements:**
 - **4- and 6-Laning about 7 Miles of SR 46 in Lake and Seminole Counties**
 - **Rebuilding the US 441/SR 46 Interchange in Mount Dora**
 - **Relocating CR 46A to Improve Wildlife Connectivity**
 - **Parallel Service Roads in East Lake and Seminole Counties**
- **Connectivity to SR 417 and I-4 Corridors**



PROJECT ECONOMIC IMPACT

At an estimated cost of \$1.7 Billion for Engineering & Construction, the Wekiva Parkway is Projected to Provide:

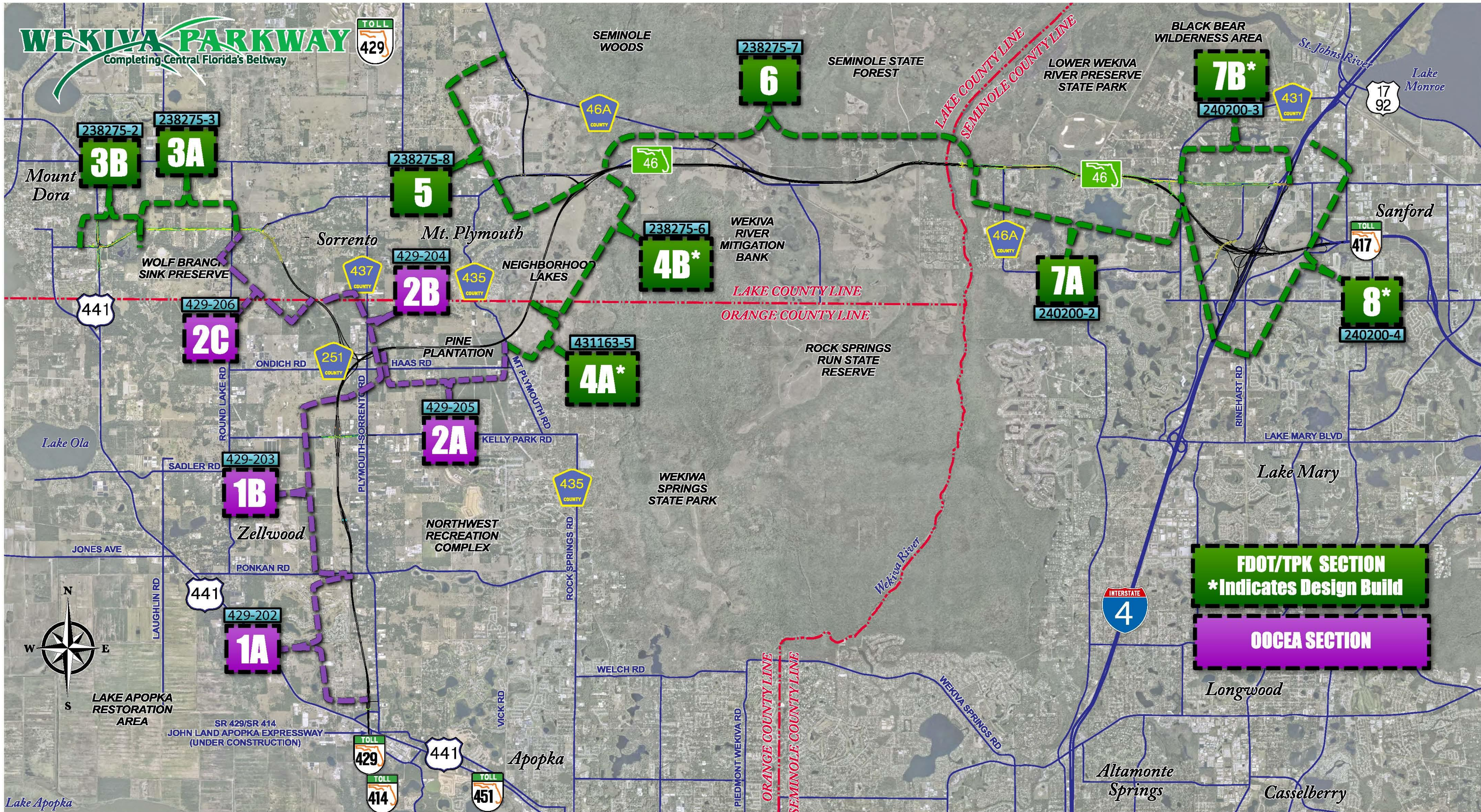
Construction Related Jobs	11,536
Supporting Industries Jobs	5,236
Induced Employment Jobs	16,905

***Estimated Total Jobs 33,677**

*Job Multiplier Source: Federal Highway Administration (FHWA) Employment Impacts of Highway Infrastructure Investment; Updated March 2010

WEKIVA PARKWAY

Completing Central Florida's Beltway



LAKE APOPKA RESTORATION AREA

SR 429/SR 414 JOHN LAND APOPKA EXPRESSWAY (UNDER CONSTRUCTION)

LAKE APOPKA

FDOT/TPK SECTION
*Indicates Design Build

OOCEA SECTION

238275-2
3B

238275-3
3A

429-206
2C

429-203
1B

429-202
1A

238275-8
5

429-204
2B

429-205
2A

431163-5
4A*

238275-6
4B*

238275-7
6

240200-2
7A

240200-3
7B*

240200-4
8*

Mount Dora

WOLF BRANCH SINK PRESERVE

Sorrento

Mt. Plymouth

NEIGHBORHOOD LAKES

WEKIWA RIVER MITIGATION BANK

LAKE COUNTY LINE
ORANGE COUNTY LINE

ROCK SPRINGS RUN STATE RESERVE

WEKIWA SPRINGS STATE PARK

NORTHWEST RECREATION COMPLEX

SEMINOLE STATE FOREST

BLACK BEAR WILDERNESS AREA

LOWER WEKIWA RIVER PRESERVE STATE PARK

Sanford

Lake Mary

Longwood

Altamonte Springs

Casselberry

Apopka



Expressway Authority Sections



Section 1A

SECTION 429-202 (1A)
60% Submittal Subject to Change

End Project
Section 429-202 (1A)
Begin Project
Section 429-203 (1B)

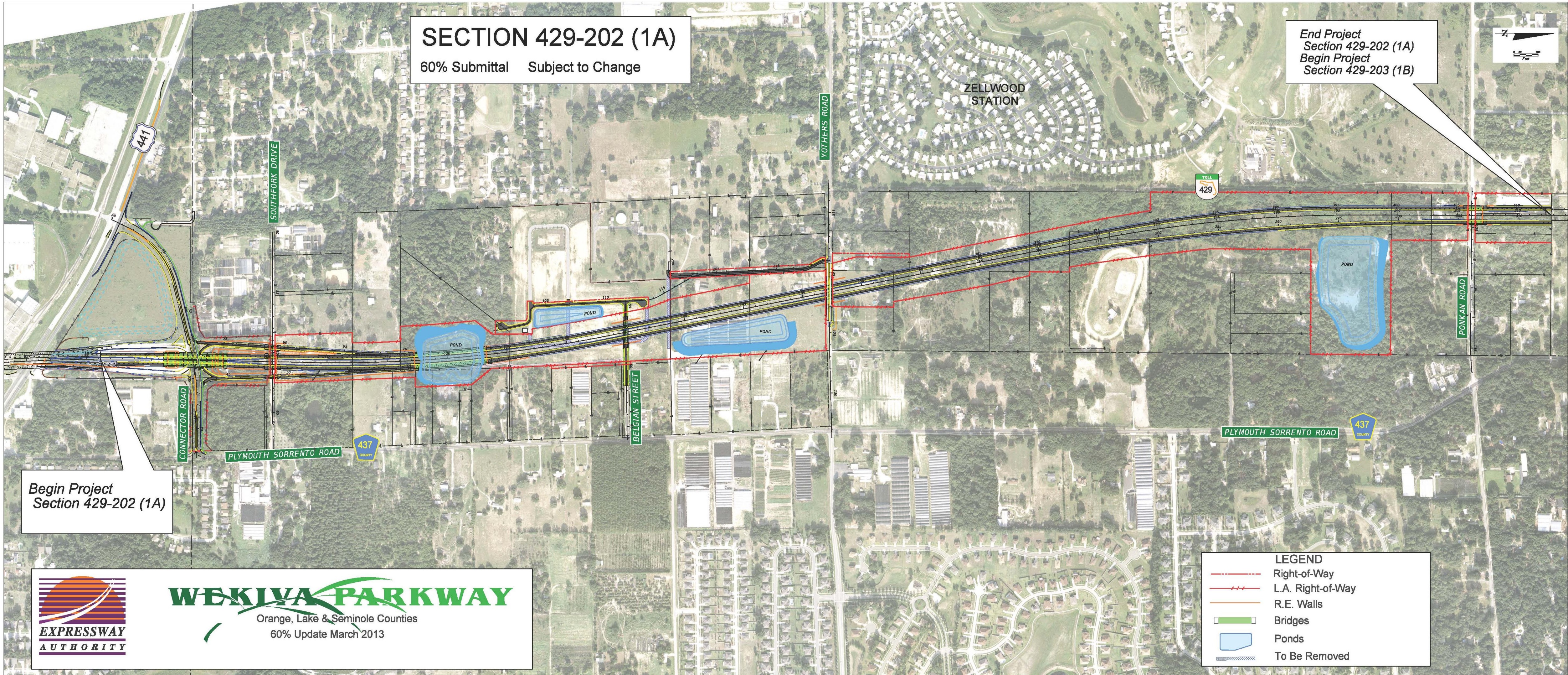
Begin Project
Section 429-202 (1A)



WEKIIVA PARKWAY
Orange, Lake & Seminole Counties
60% Update March 2013

LEGEND

- Right-of-Way
- L.A. Right-of-Way
- R.E. Walls
- Bridges
- Ponds
- To Be Removed



Section 1B

SECTION 429-203 (1B)

60% Update March 2013 Subject to Change

Begin Project
Section 429-203 (1B)
End Project
Section 429-202 (1A)

End Project
Section 429-203 (1B)
Begin Project
Section 429-204 (2B)









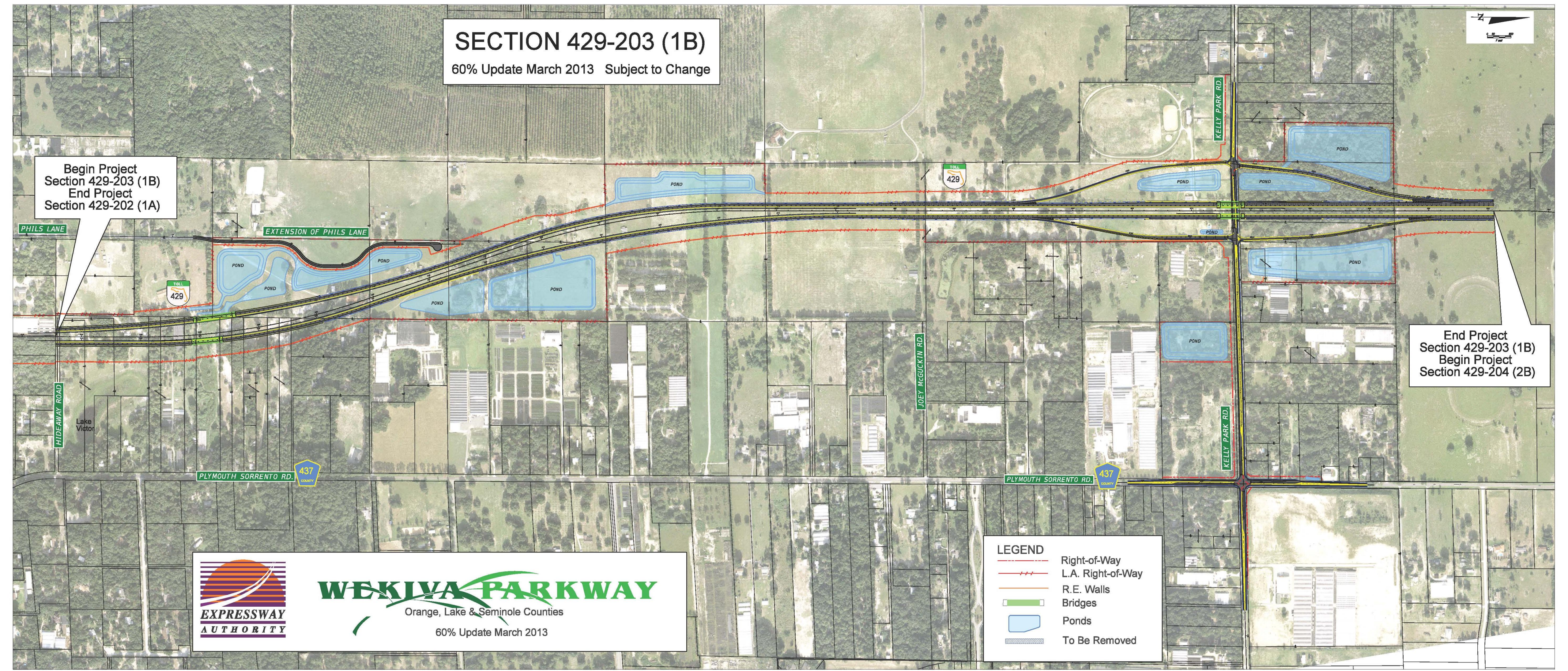
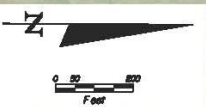
WEKIVA PARKWAY

Orange, Lake & Seminole Counties

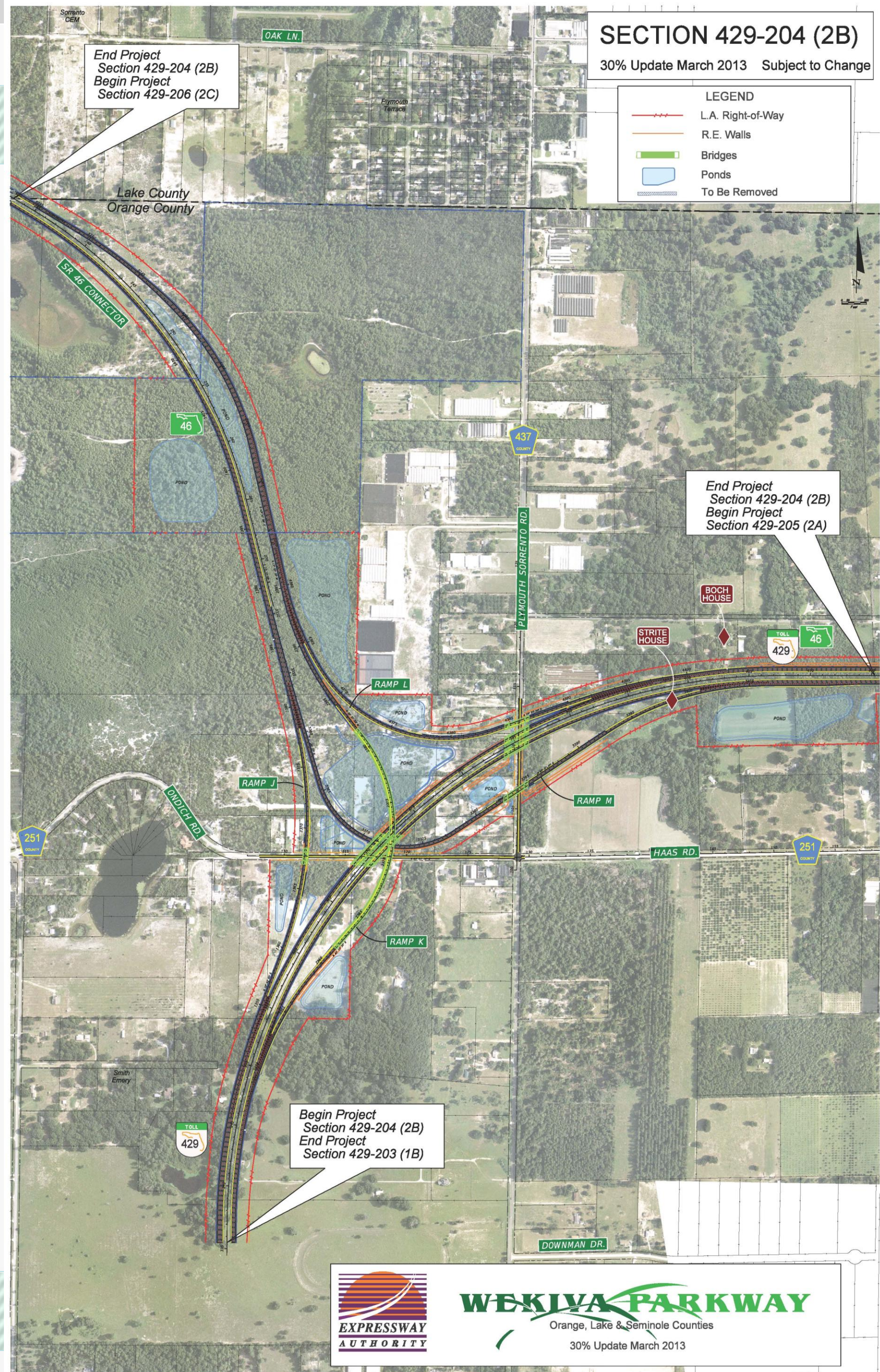
60% Update March 2013

LEGEND

-  Right-of-Way
-  L.A. Right-of-Way
-  R.E. Walls
-  Bridges
-  Ponds
-  To Be Removed



Section 2B



Section 2A



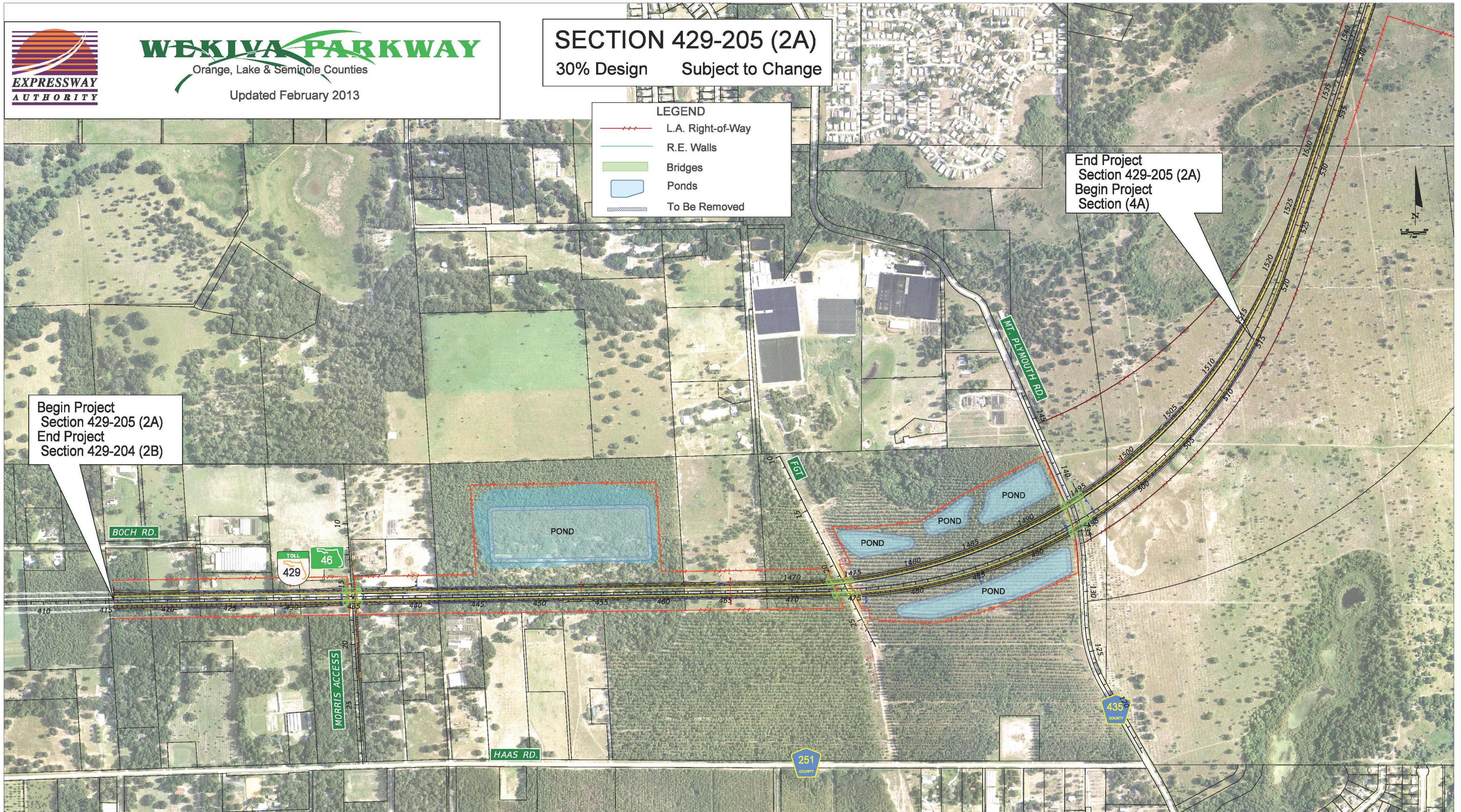
WEKIVA PARKWAY
Orange, Lake & Seminole Counties
Updated February 2013

SECTION 429-205 (2A)
30% Design Subject to Change

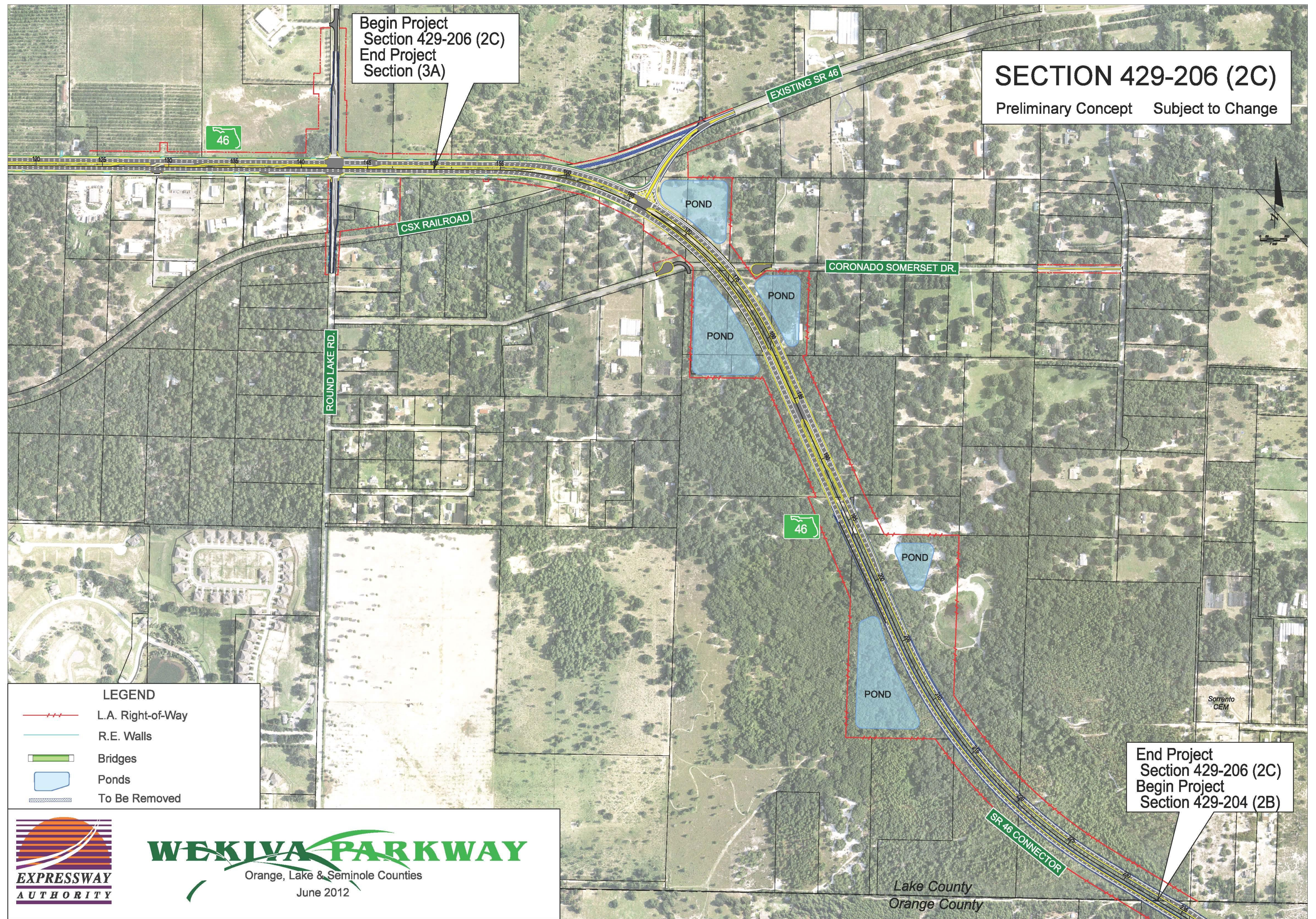
- LEGEND**
- L.A. Right-of-Way
 - R.E. Walls
 - Bridges
 - Ponds
 - To Be Removed

End Project
Section 429-205 (2A)
Begin Project
Section (4A)

Begin Project
Section 429-205 (2A)
End Project
Section 429-204 (2B)



Section 2C



SECTION 429-206 (2C)
Preliminary Concept Subject to Change

Begin Project
Section 429-206 (2C)
End Project
Section (3A)

End Project
Section 429-206 (2C)
Begin Project
Section 429-204 (2B)

- LEGEND**
- L.A. Right-of-Way
 - R.E. Walls
 - Bridges
 - Ponds
 - To Be Removed



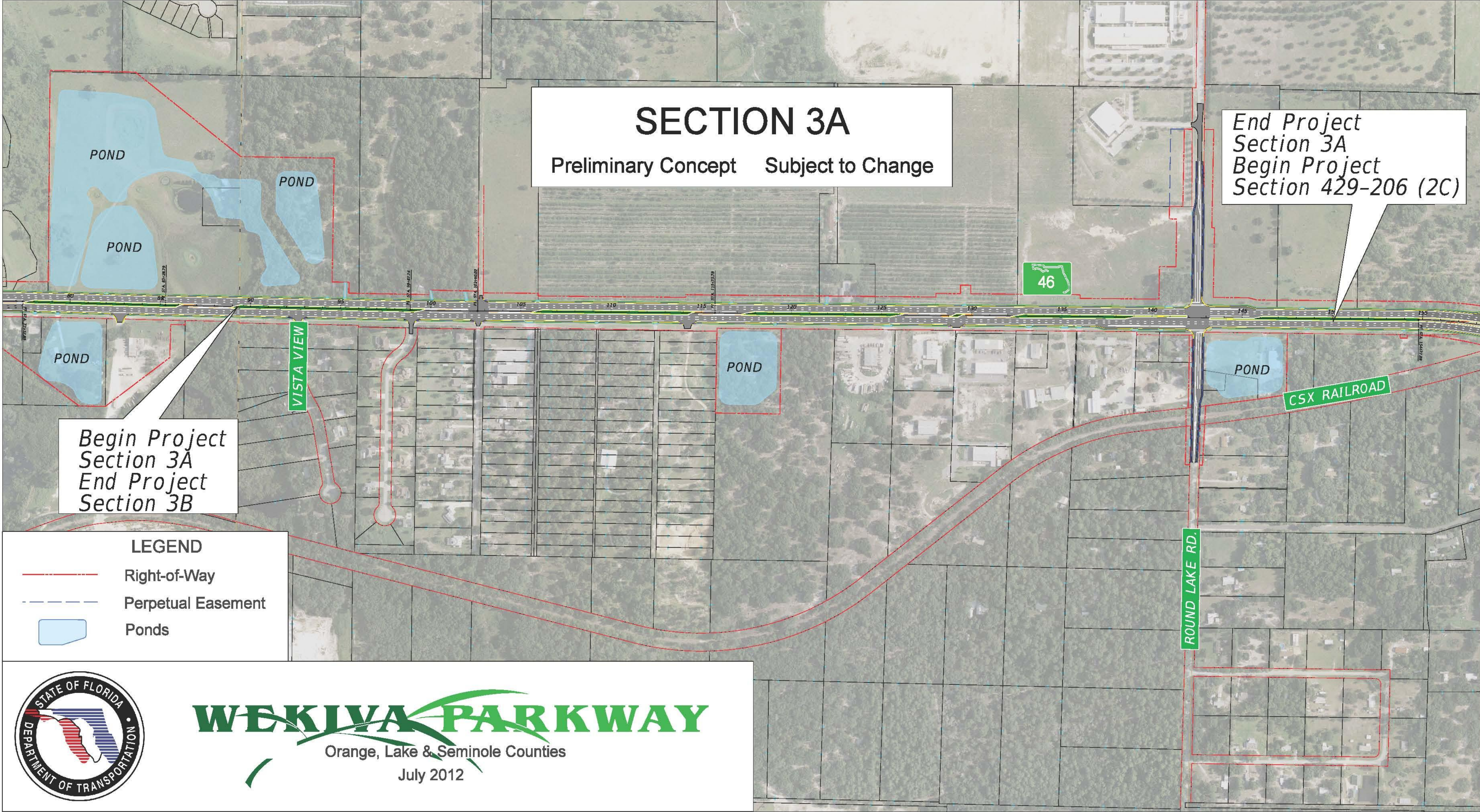
WEKIIVA PARKWAY
Orange, Lake & Seminole Counties
June 2012

Lake County
Orange County

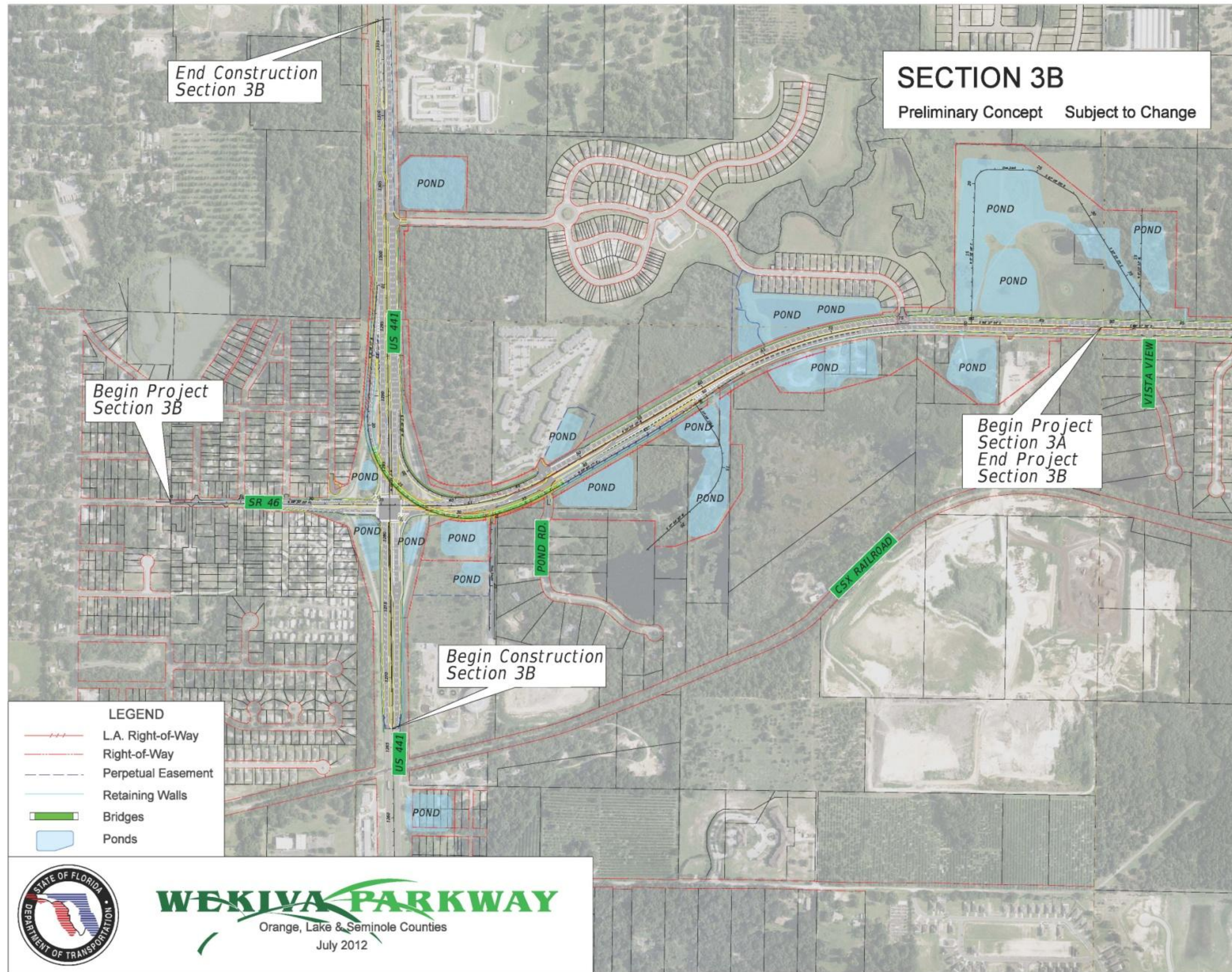
FDOT Sections



Section 3A



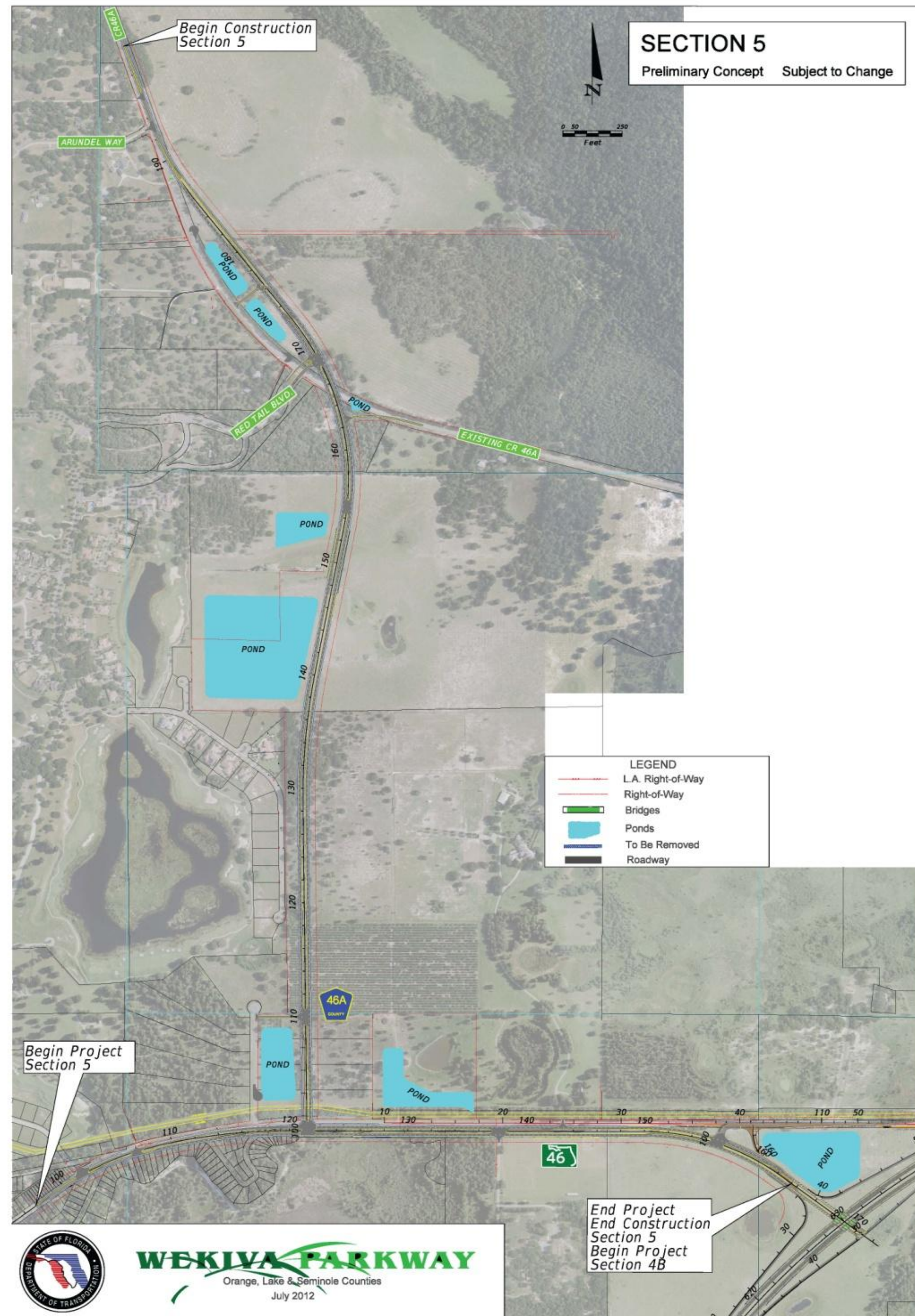
Section 3B



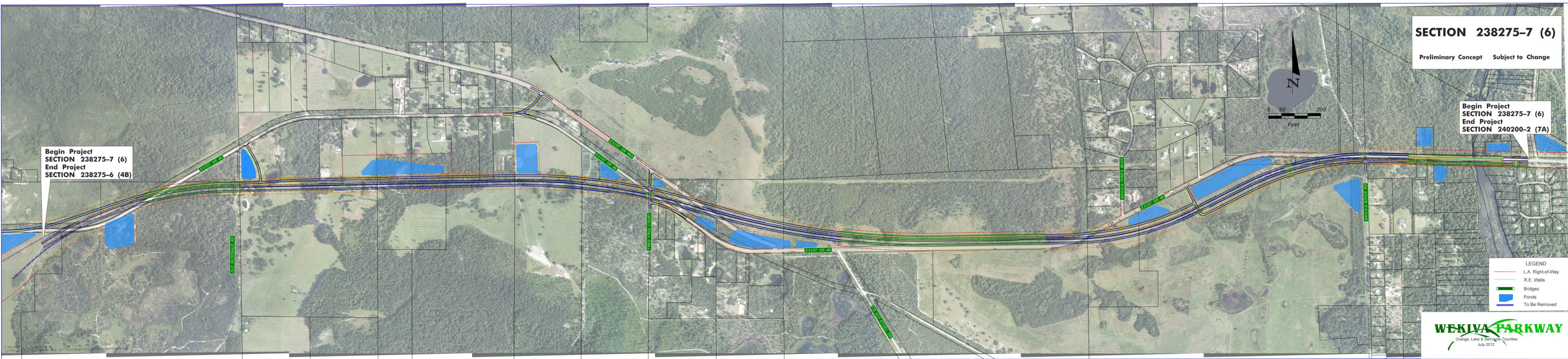
Section 4A & 4B



Section 5



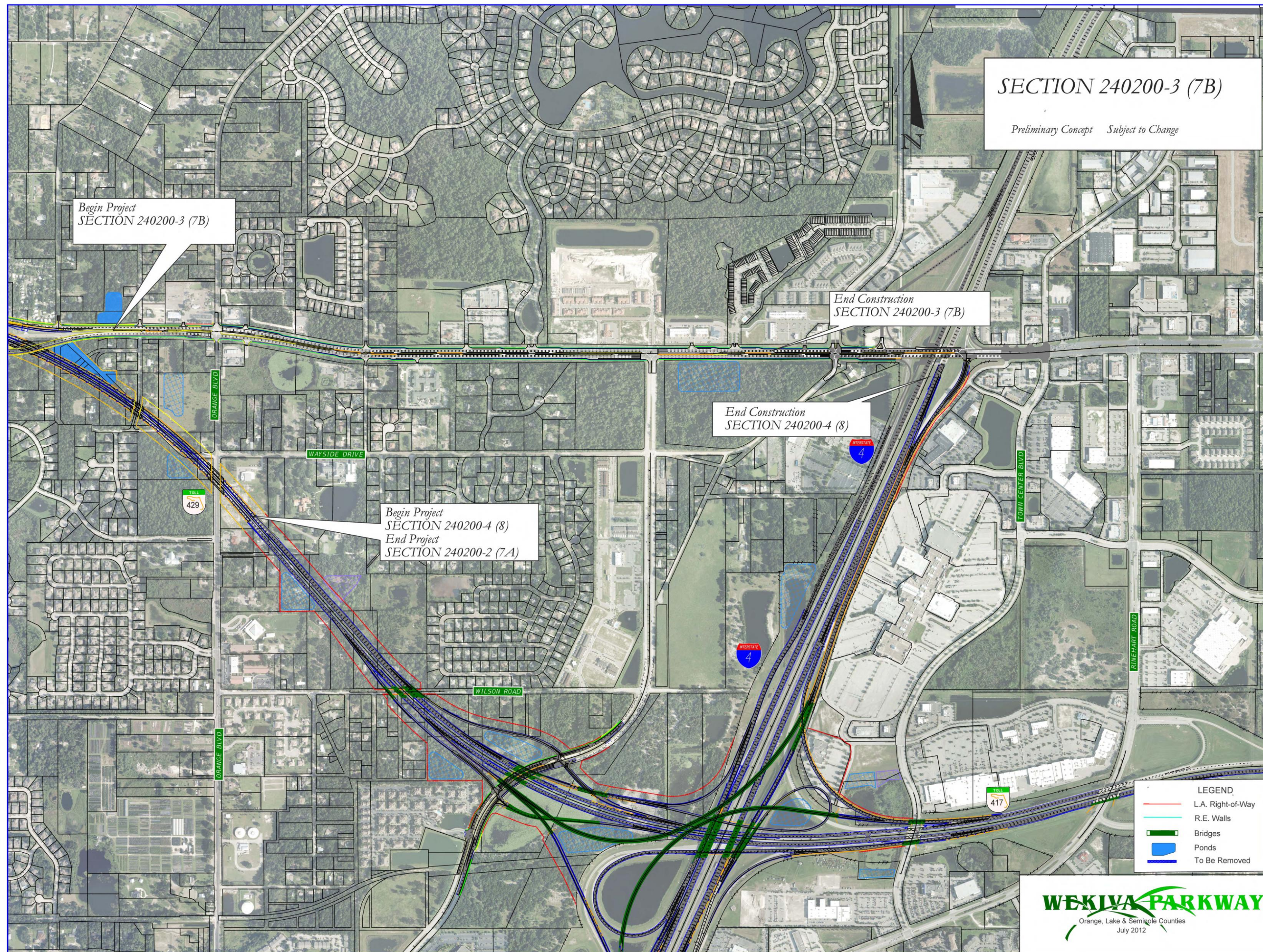
Section 6



Section 7A



Sections 7B & 8



What's Next?

- **Final Design Underway**
- **Continued Agency Coordination**
- **Opportunities for Community Input**
 - ✓ Public Meetings: June – September 2013
 - ✓ Community Presentations
 - ✓ Updates & Comments via Website: www.wekivaparkway.com
- **First Section (4A & 4B) Open to Traffic – Late 2014**



WEKIWA PARKWAY

Completing Central Florida's Beltway



Thank You!

Questions?

