

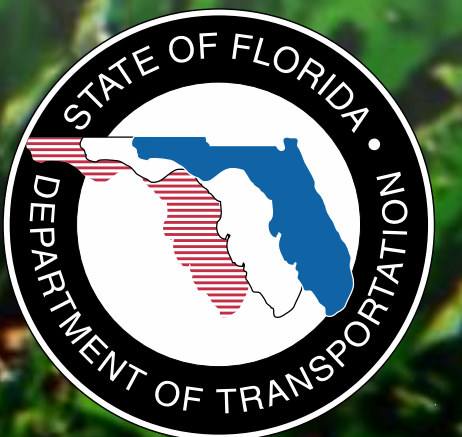
# WEKIWA PARKWAY

Completing Central Florida's Beltway



## A Regional Transportation Solution

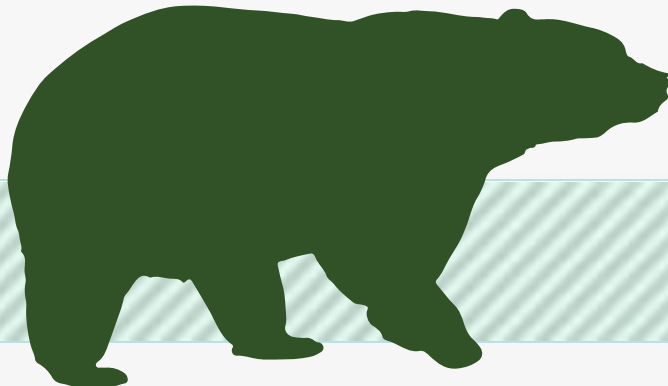
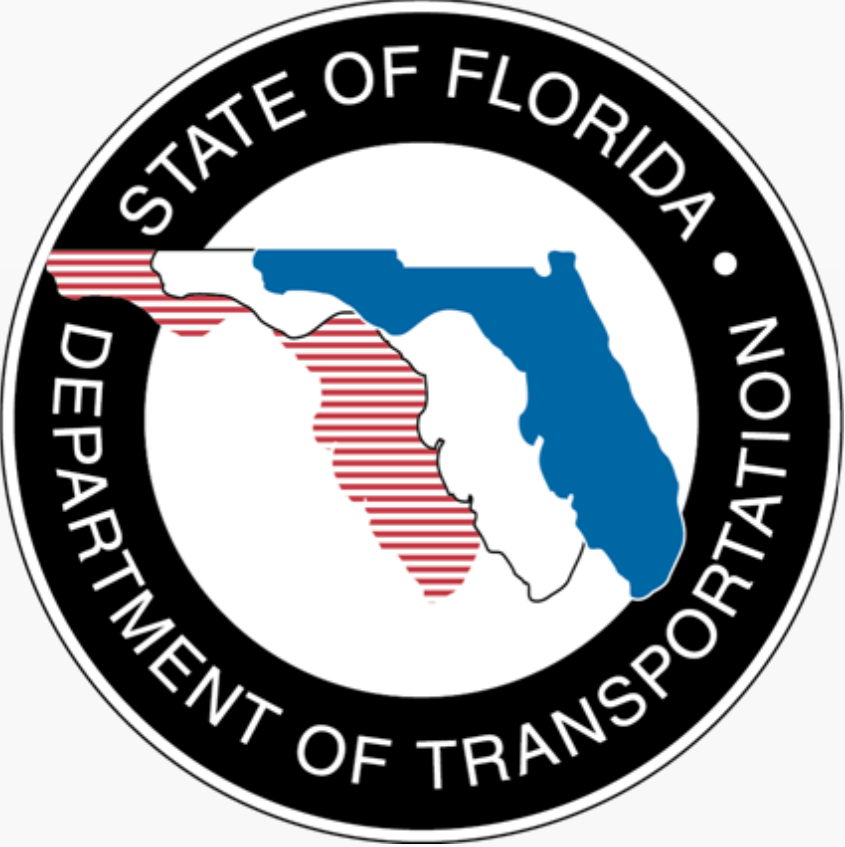
Rock Springs Ridge HOA Board  
Aug. 21, 2013



# CENTRAL FLORIDA LEGACY PROJECTS



# Funding Partners



## Project Description

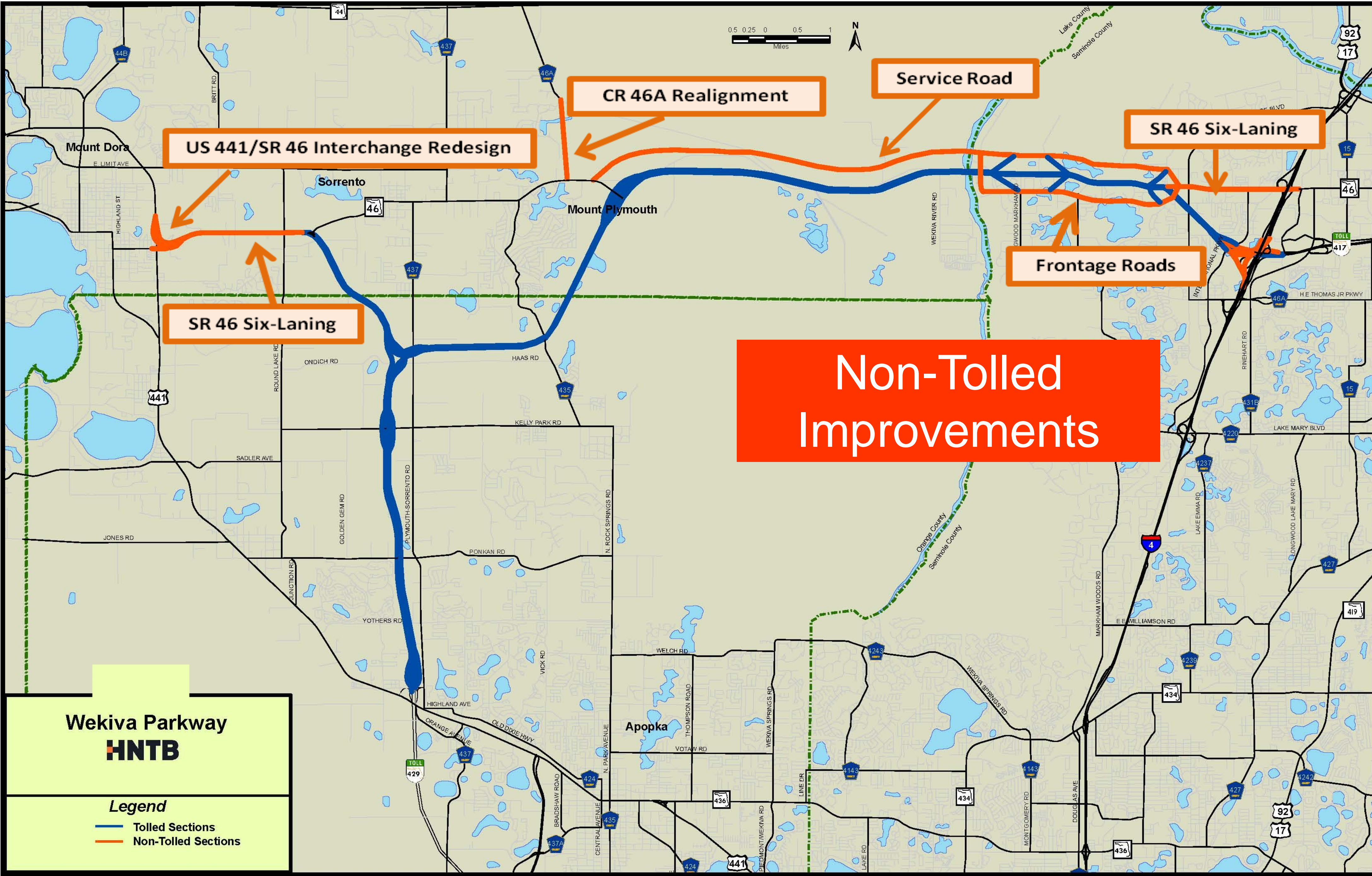
- **\$1.5 Billion Completion of Central Florida's Beltway**
- **25-mile Toll Road**
- **Non-Toll Road Improvements:**
  - **4- and 6-Laning about 7 Miles of SR 46 in Lake and Seminole Counties**
  - **Rebuilding the US 441/SR 46 Interchange in Mount Dora**
  - **Relocating CR 46A to Improve Wildlife Connectivity**
  - **Parallel Service Roads in East Lake and Seminole Counties**
- **Connectivity to SR 417 and I-4 Corridors**



# WEKIVA PARKWAY



**WEKIVA PARKWAY**



US 441/SR 46 Interchange Redesign

CR 46A Realignment

Service Road

SR 46 Six-Laning

SR 46 Six-Laning

Frontage Roads

Non-Tolled Improvements

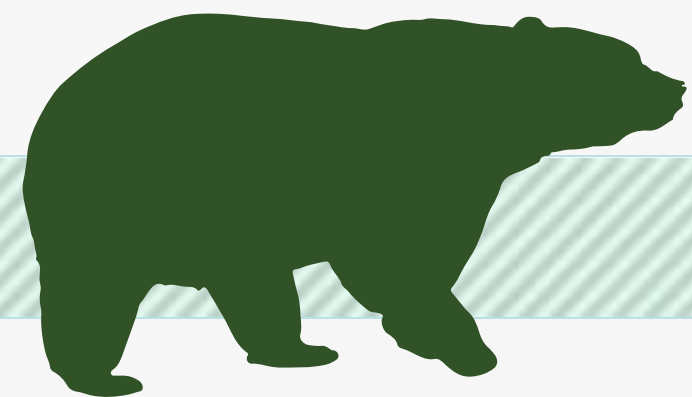
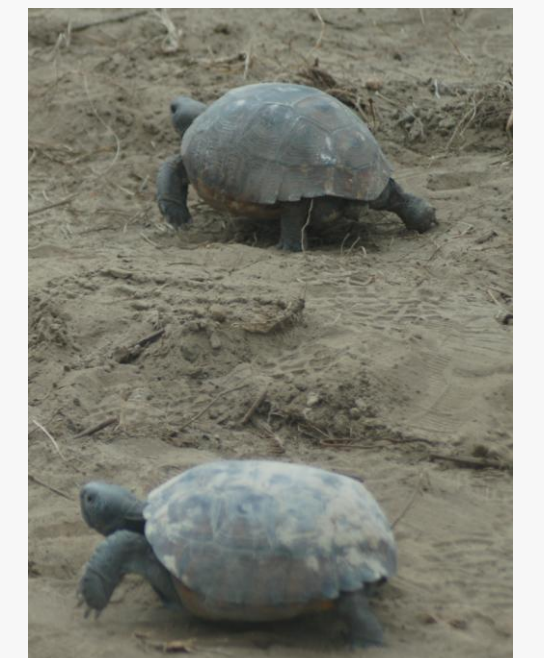
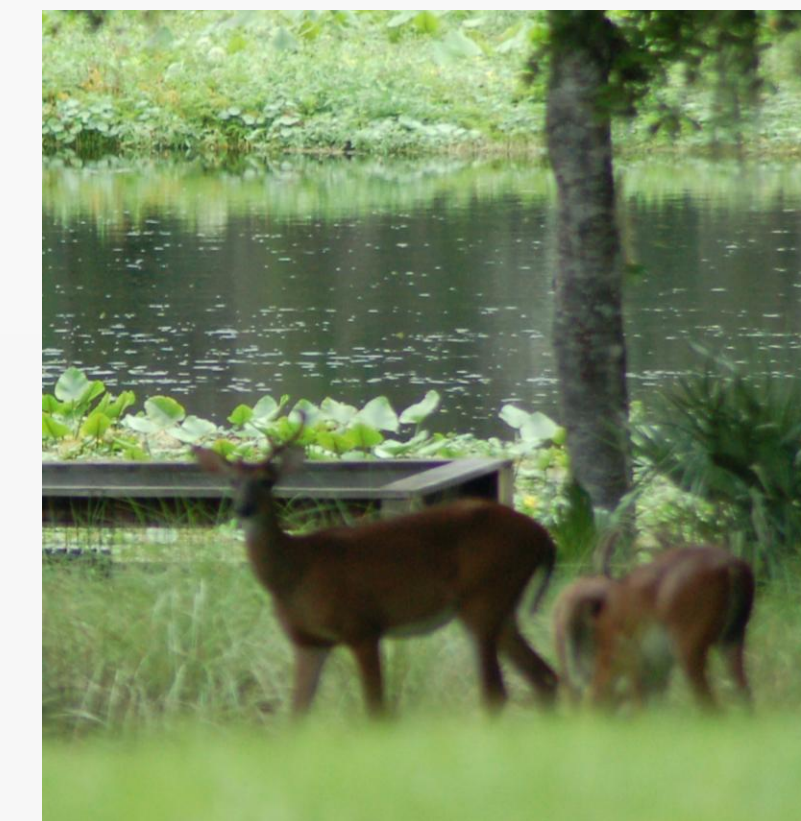
**Wekiva Parkway**  
**HNTB**

*Legend*

- Tolled Sections
- Non-Tolled Sections

## Protecting Nature

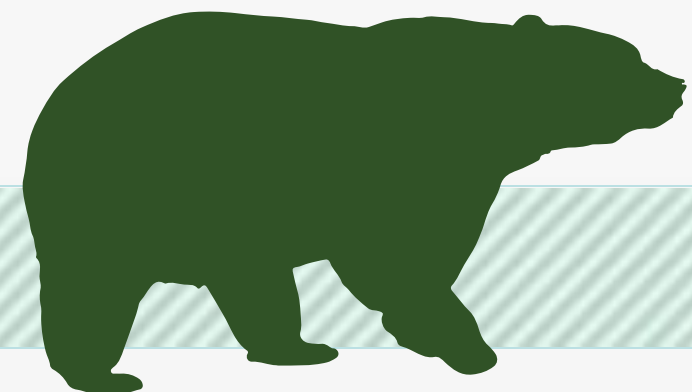
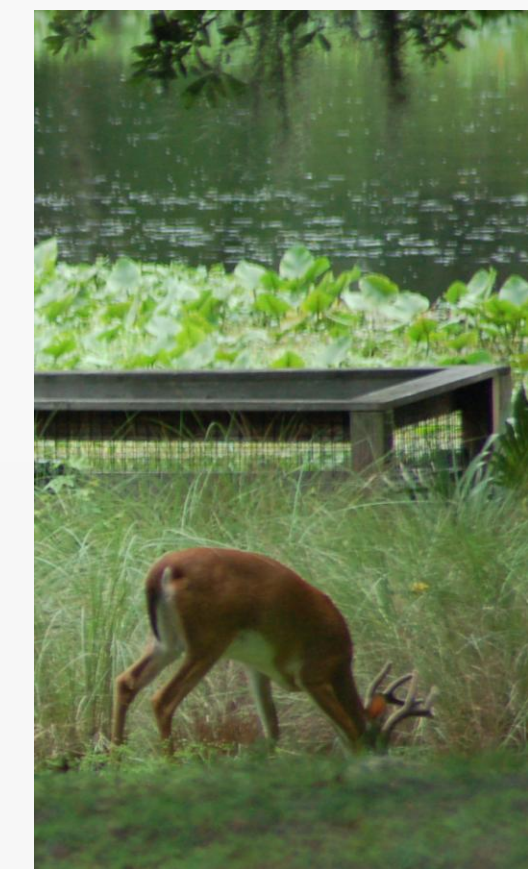
- **Wekiva River: Outstanding Florida Water & National Wild & Scenic River**
- **Authorized by the 2004 Wekiva Parkway and Protection Act**
  - **Setting Aside More than 3,400 Acres for Conservation**
  - **Largely Elevated to Reduce Accidents Between Vehicles & Wildlife**
  - **Several Wildlife Bridges**
  - **Few Interchanges (Reduce Development)**



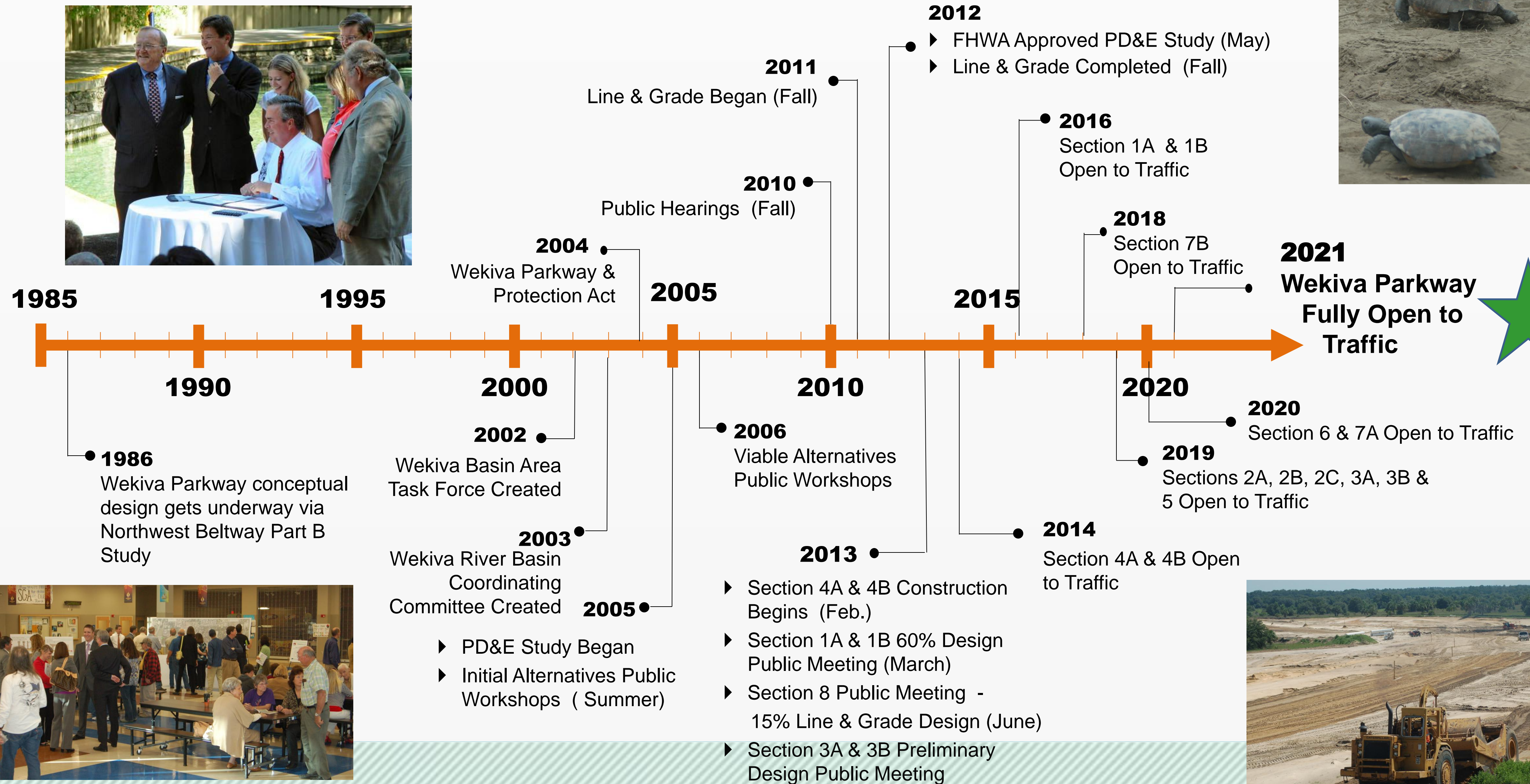
# Regional Project

## By the Numbers:

- 3 Agencies
- 14 Project Sections
- 3 Counties, 3 Cities, State & Federal Agencies
- Wekiva River Basin Area Task Force, Coordinating Committee & Wekiva River Basin Commission
- 30,000+ Property Owners in PD&E Study Area
- 400+ Community & Agency Stakeholder Meetings
- 12 Public Meetings & Hearings Drawing 4,100 People







# Kick-off Event – July 10, 2013



# PROJECT ECONOMIC IMPACT

At an estimated cost of \$1.5 Billion for Engineering & Construction, the Wekiva Parkway is Projected to Provide:

Construction Related Jobs	12,272
Supporting Industries Jobs	5,570
Induced Employment Jobs	17,983

**\*Estimated Total Jobs 35,825**

\*Job Multiplier Source: Federal Highway Administration (FHWA) Employment Impacts of Highway Infrastructure Investment; Updated March 2010

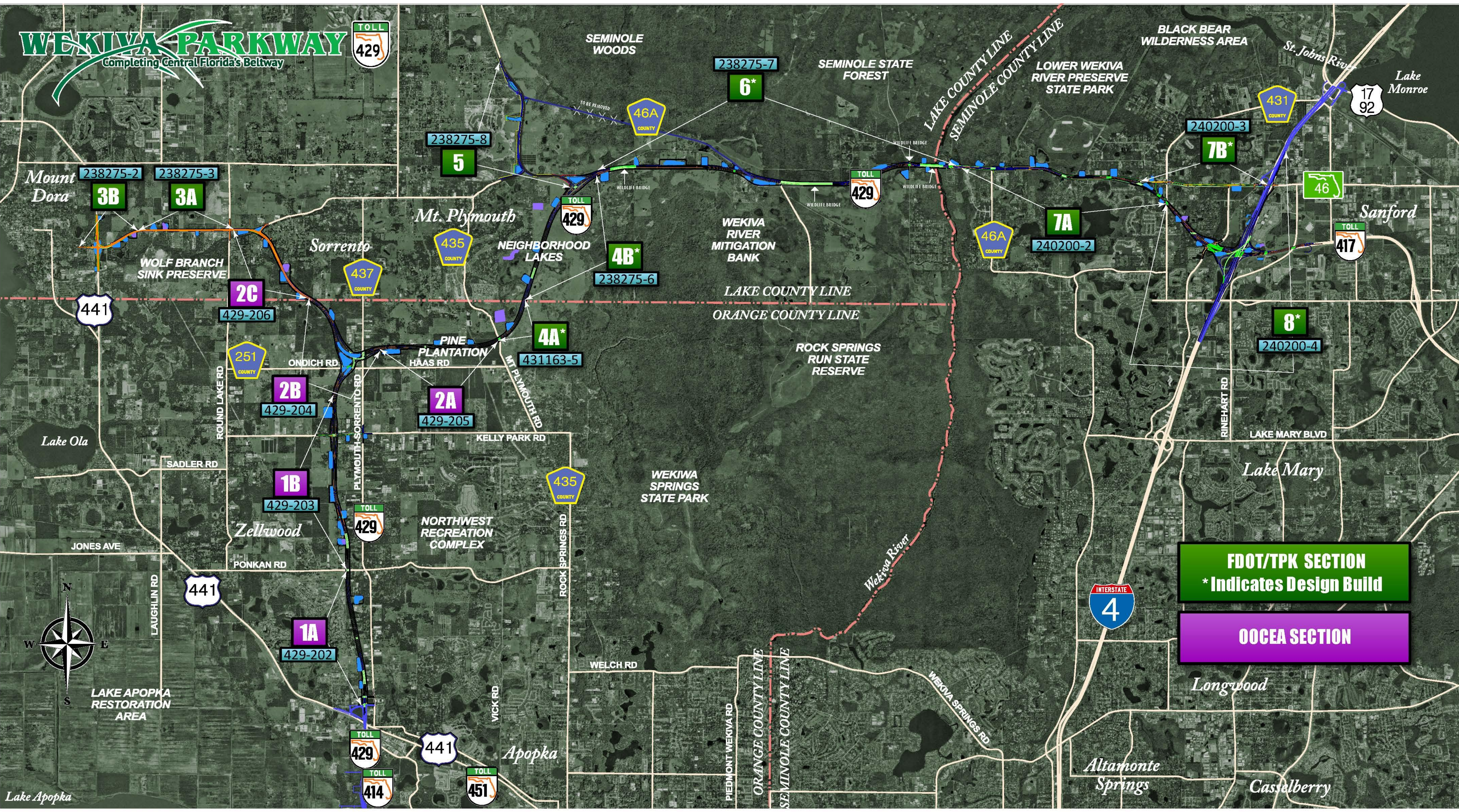


# Project Sections



# WEKIVA PARKWAY

Completing Central Florida's Beltway



**FDOT/TPK SECTION**  
\* Indicates Design Build

**OOCEA SECTION**

# Expressway Authority Sections



# Pier Option

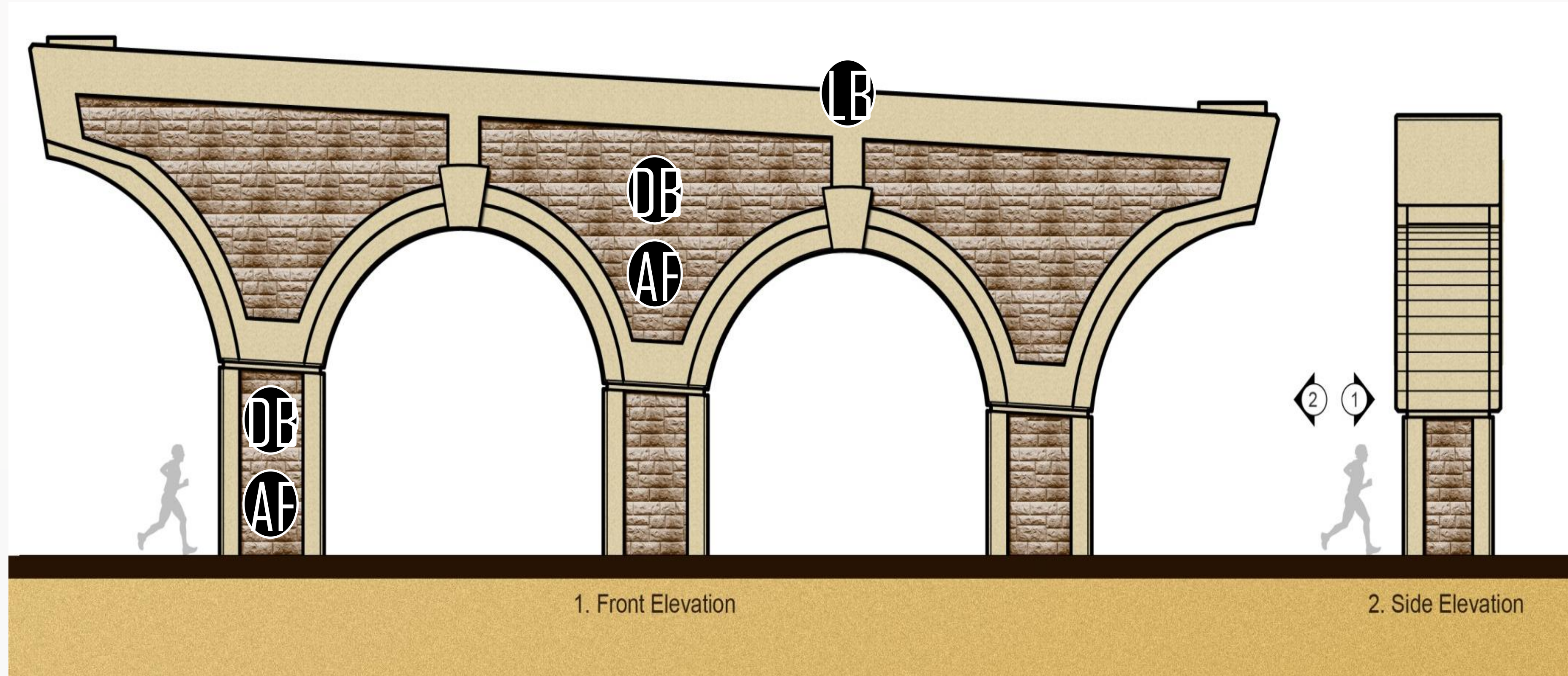
## Standard Colors



Light Brown  
Dark Green



Dark Brown  
Ashlar Formline



# Gantry Support Option

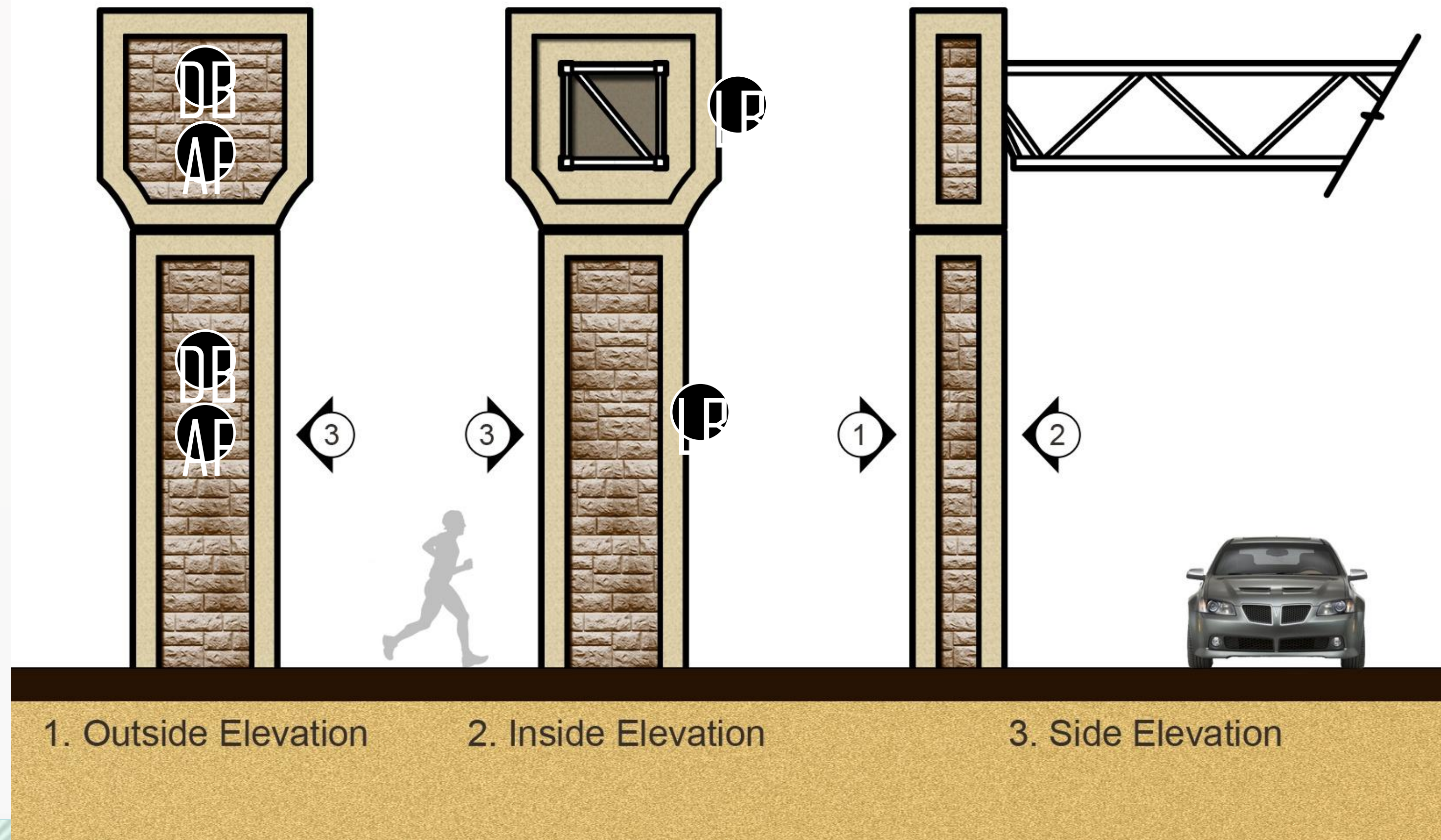
## Standard Colors



Light Brown  
Dark Green



Dark Brown  
Ashlar Formliner





# Bridge Wall Option

## Standard Colors



Light Brown



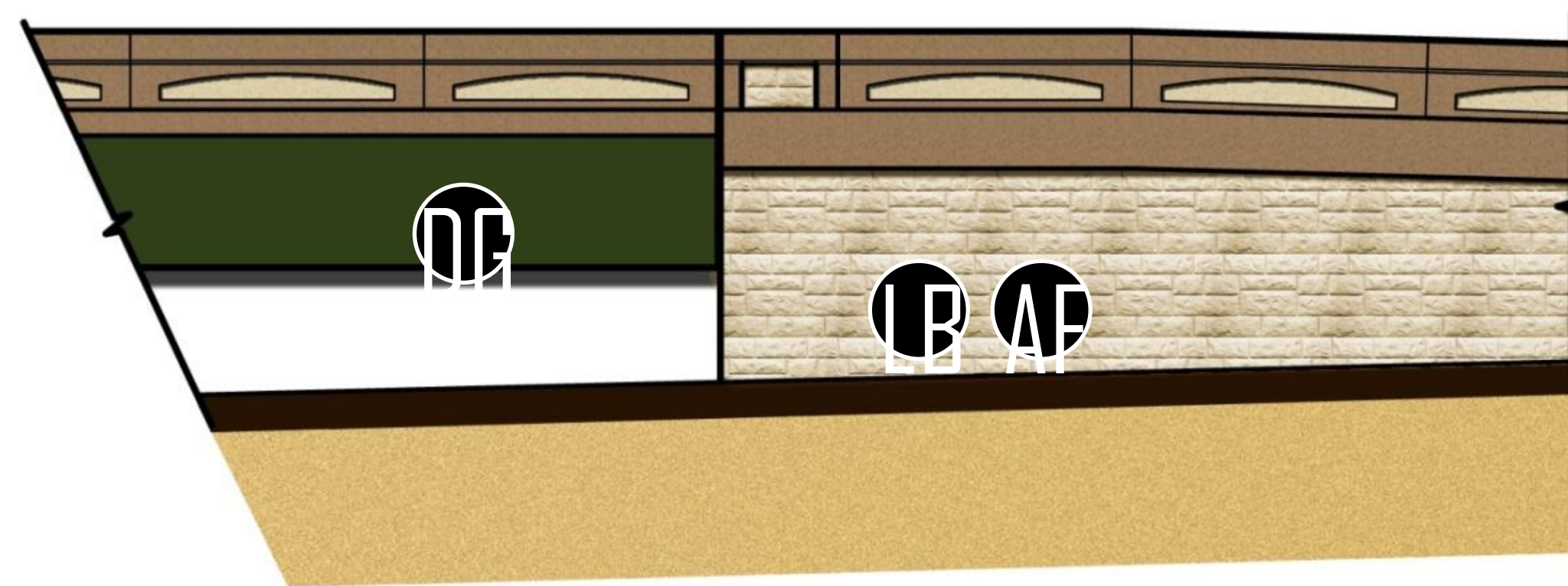
Dark Brown



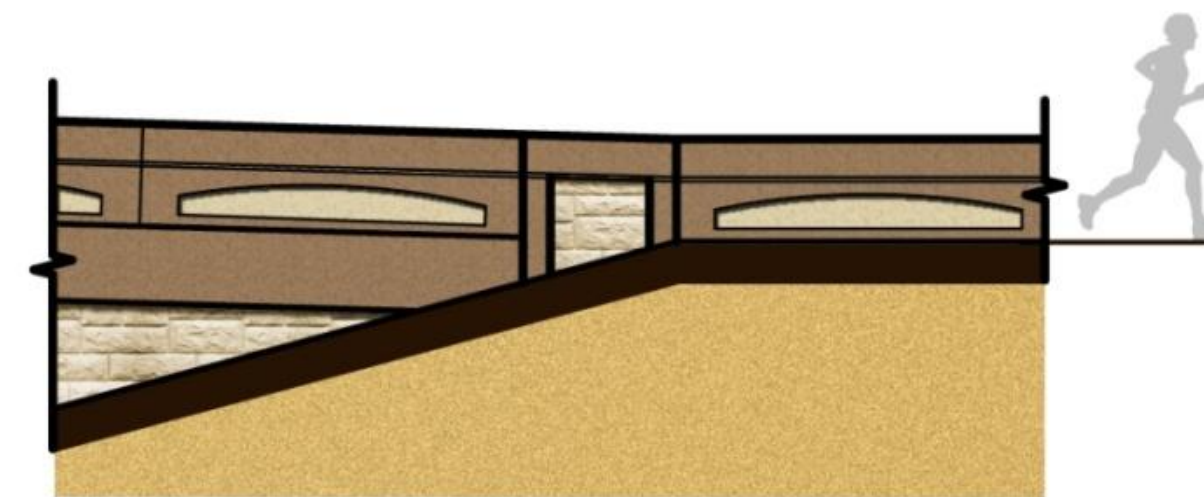
Dark Green



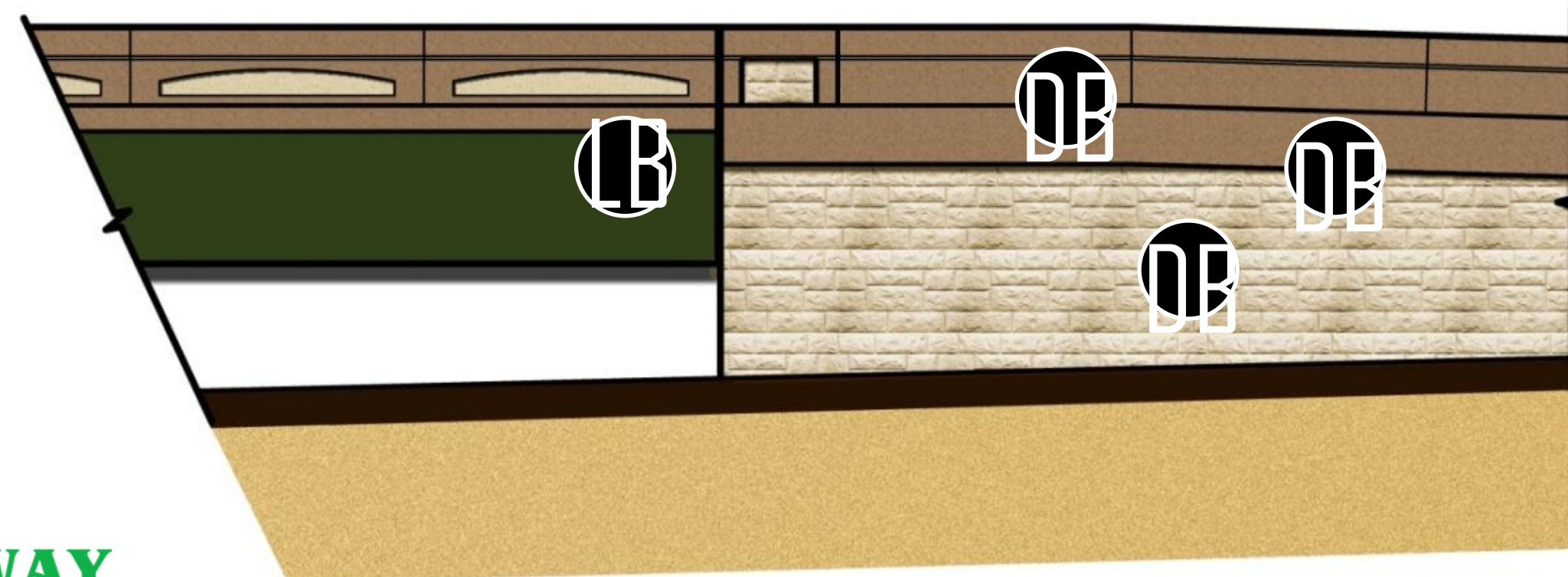
Ashlar Formliner



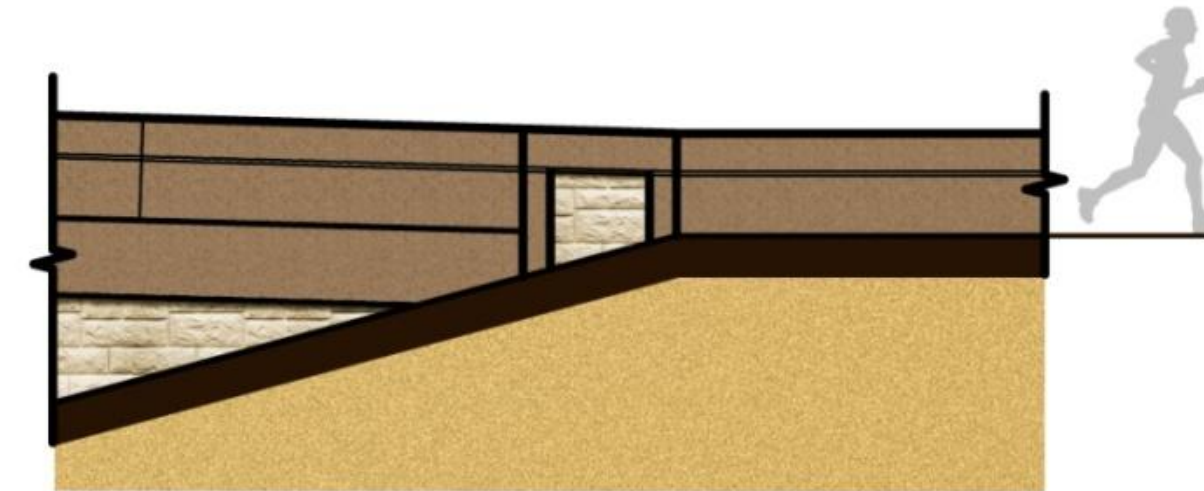
End of Bridge Treatment - Arched Railing



End of Wall Treatment - Arched Railing



End of Bridge Treatment - Standard Railing

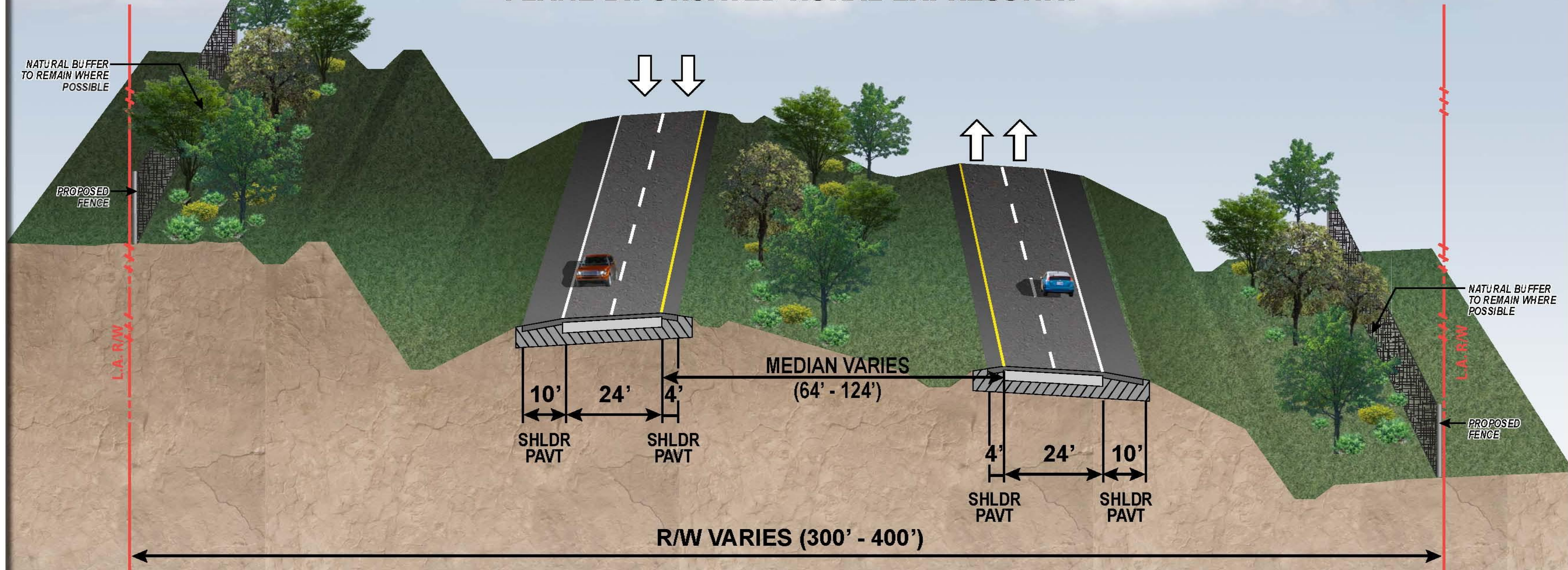


End of Wall Treatment - Standard Railing

# WEKIVA PARKWAY

## TYPICAL SECTION

### SR 429 (WEKIVA PARKWAY) 4-LANE BIFURCATED RURAL EXPRESSWAY



NOTE: PRELIMINARY, SUBJECT TO CHANGE



# Section 1A

**SECTION 429-202 (1A)**  
60% Submittal Subject to Change

End Project  
Section 429-202 (1A)  
Begin Project  
Section 429-203 (1B)

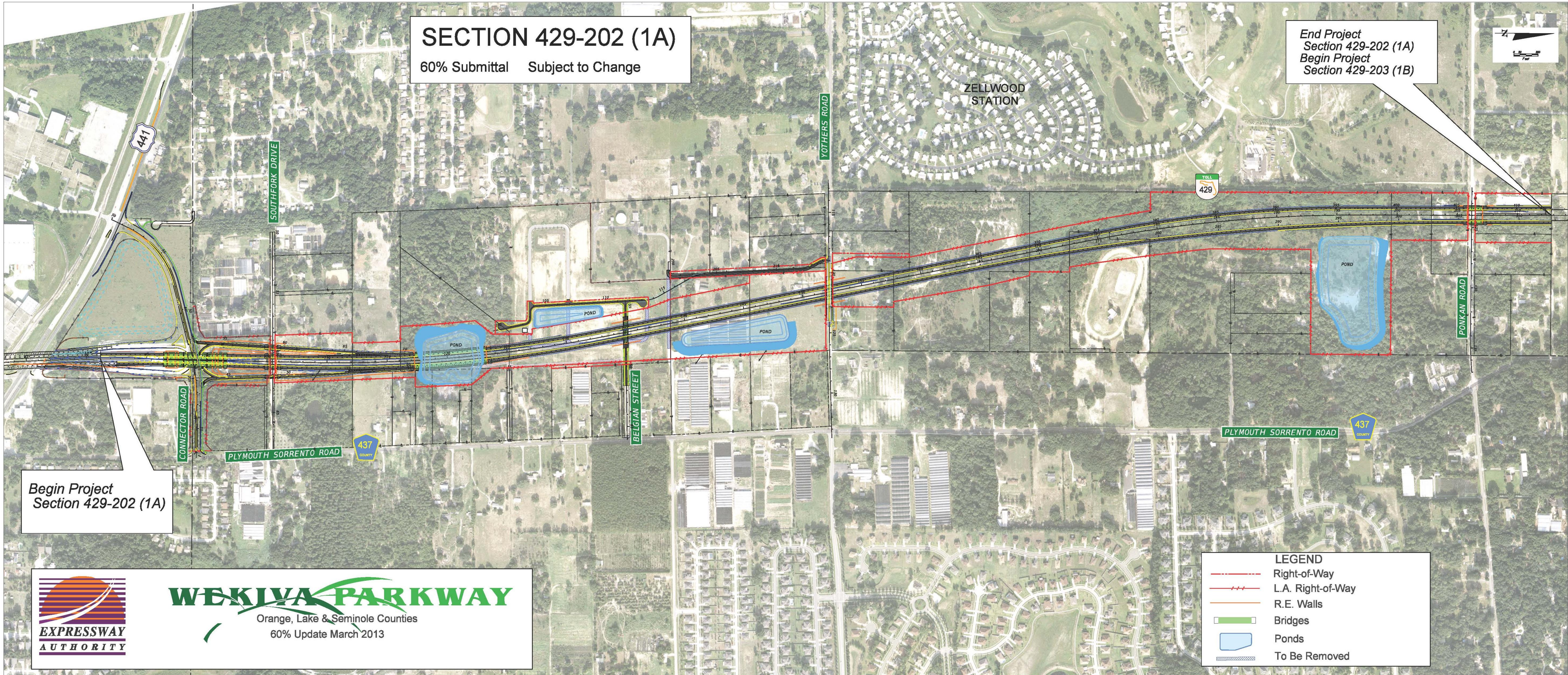
Begin Project  
Section 429-202 (1A)



**WEKIIVA PARKWAY**  
Orange, Lake & Seminole Counties  
60% Update March 2013

**LEGEND**

- Right-of-Way
- L.A. Right-of-Way
- R.E. Walls
- Bridges
- Ponds
- To Be Removed



# Section 1B

## SECTION 429-203 (1B)

60% Update March 2013 Subject to Change

Begin Project  
Section 429-203 (1B)  
End Project  
Section 429-202 (1A)

End Project  
Section 429-203 (1B)  
Begin Project  
Section 429-204 (2B)





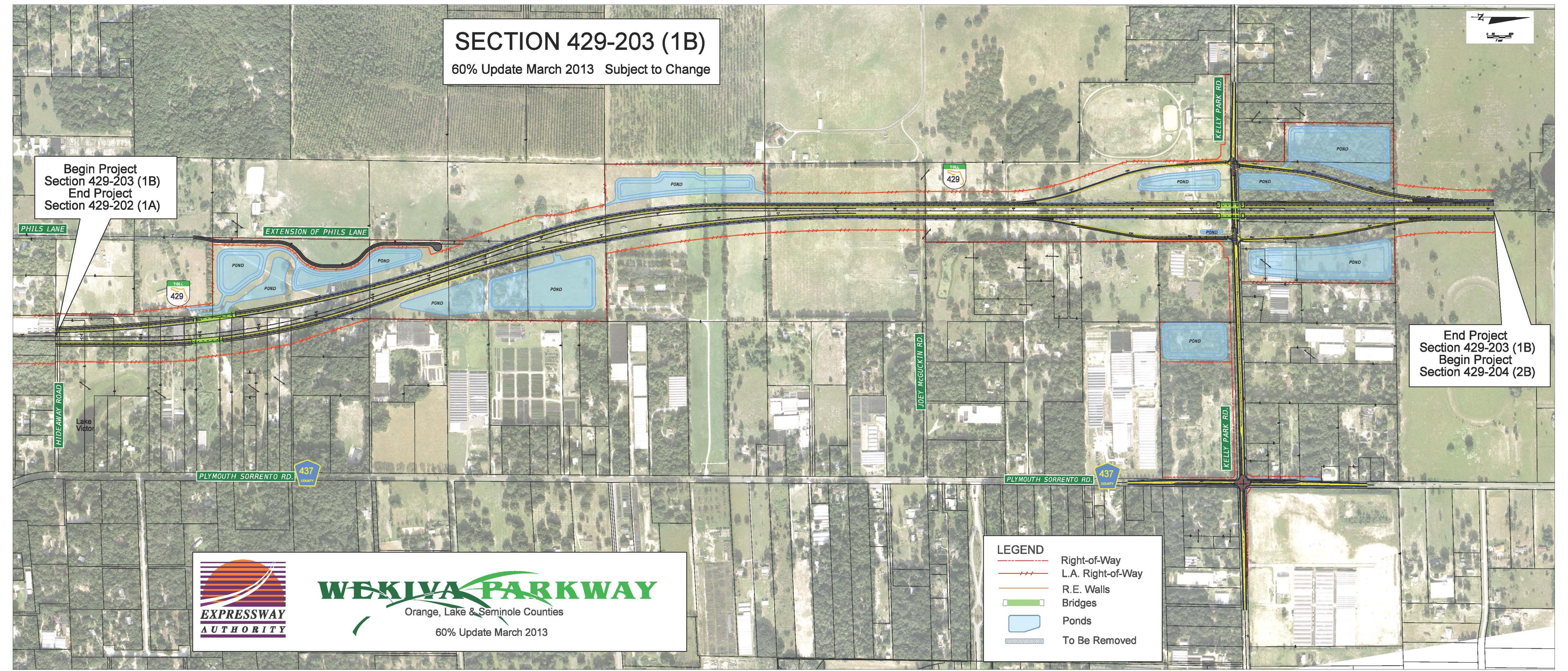
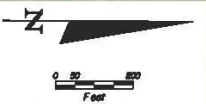
### WEKIVA PARKWAY

Orange, Lake & Seminole Counties

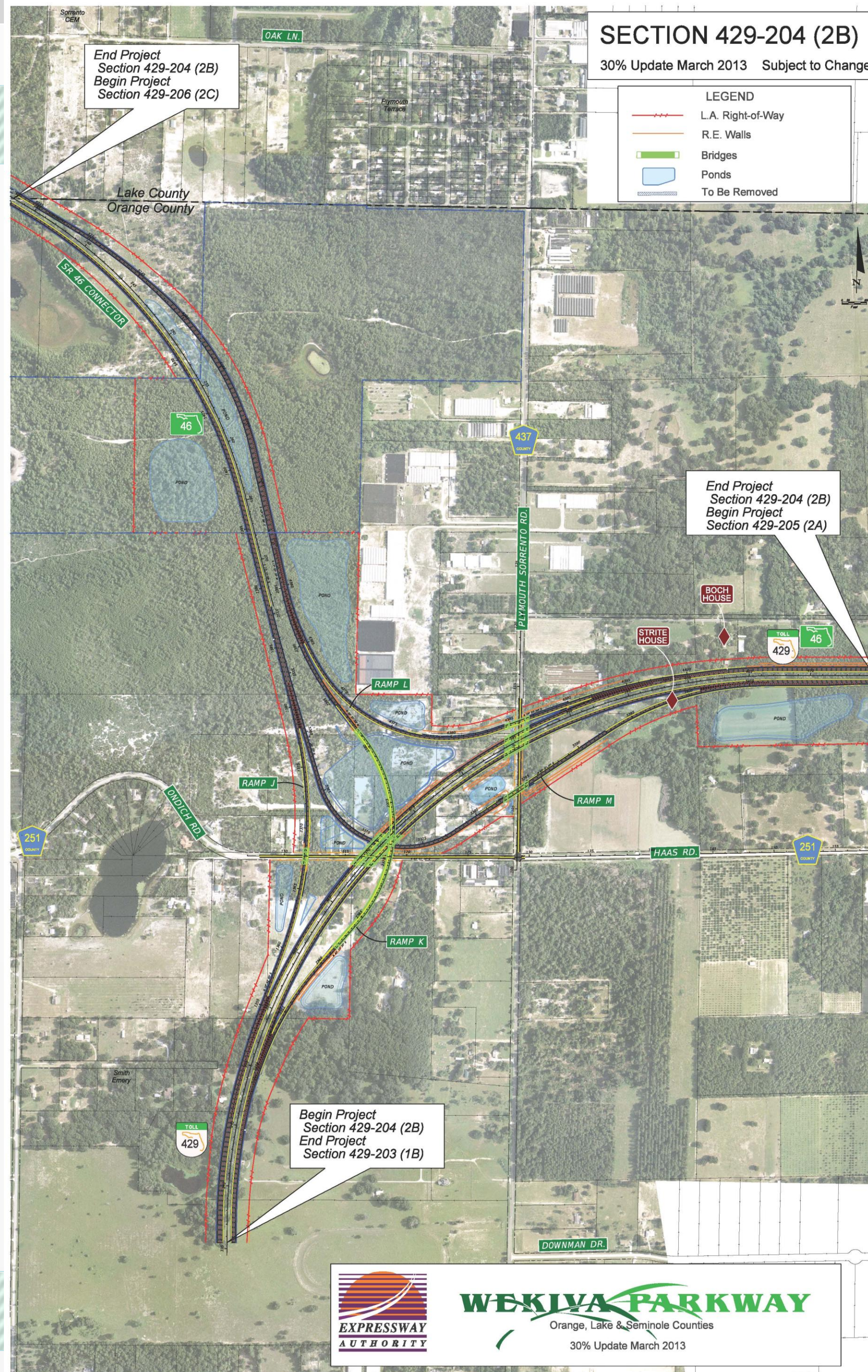
60% Update March 2013

#### LEGEND

-  Right-of-Way
-  L.A. Right-of-Way
-  R.E. Walls
-  Bridges
-  Ponds
-  To Be Removed



# Section 2B





# WEKIVA PARKWAY






Orange, Lake & Seminole Counties

Updated July 2013

## SECTION 429-205 (2A)

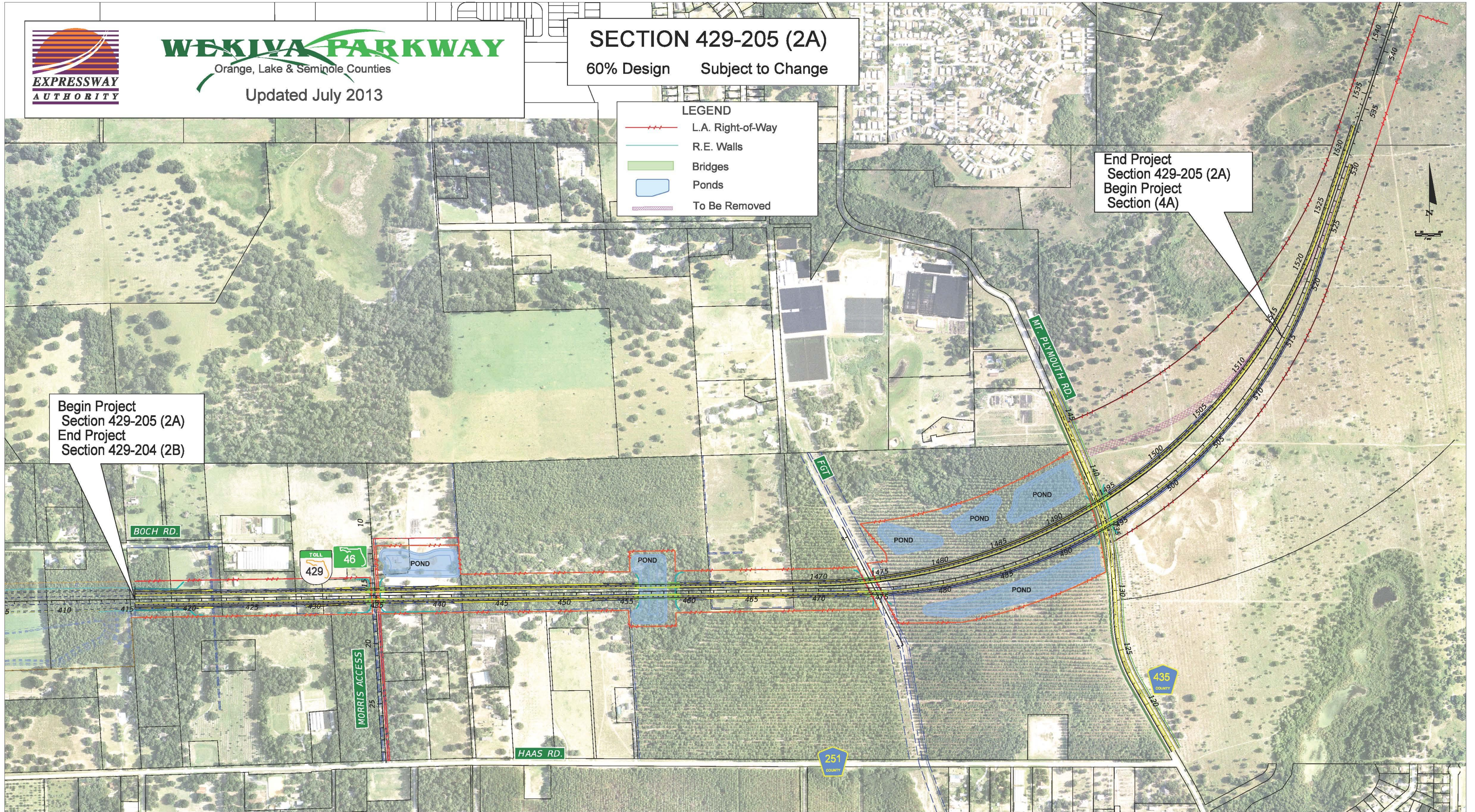
60% Design Subject to Change

### LEGEND

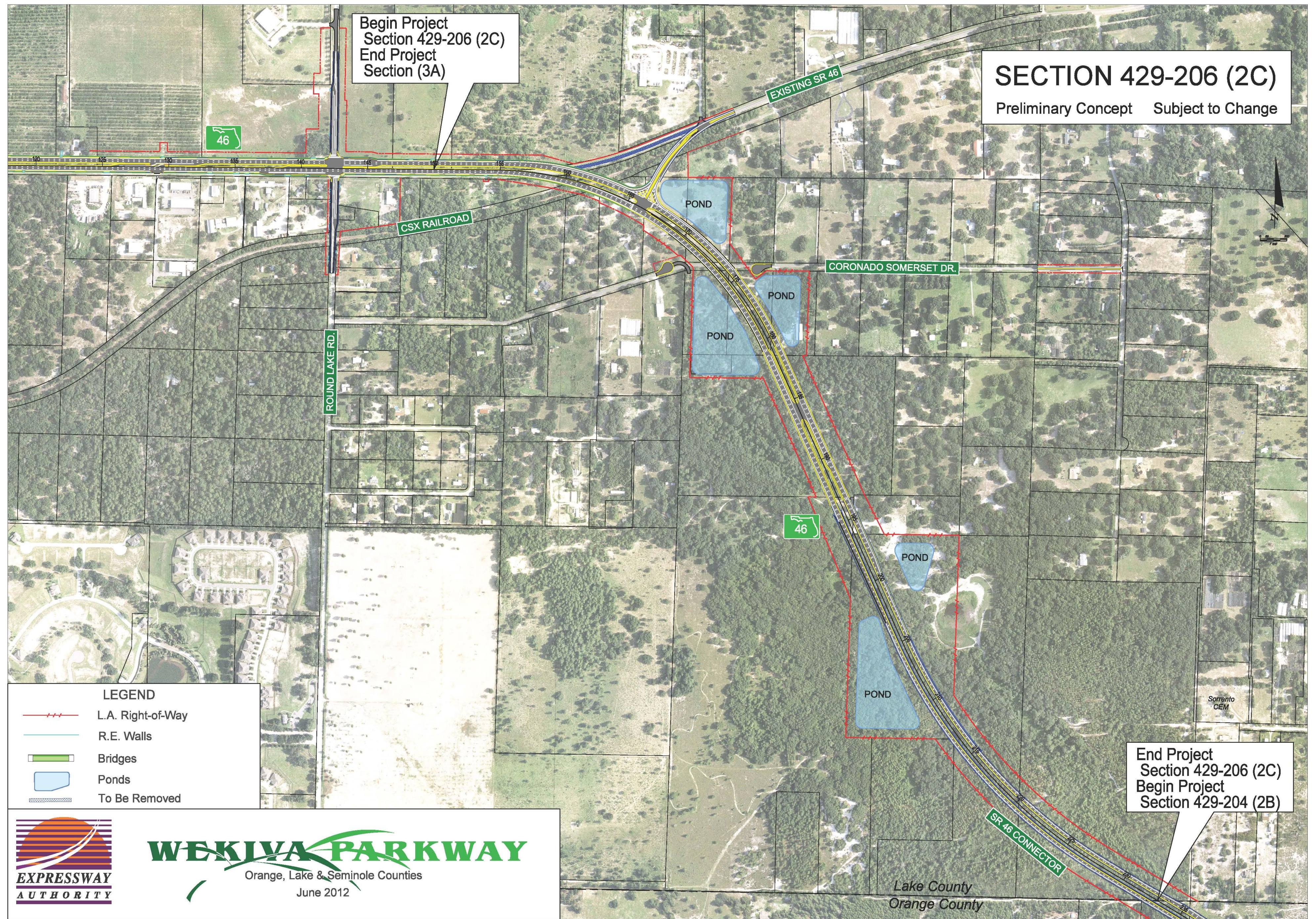
-  L.A. Right-of-Way
-  R.E. Walls
-  Bridges
-  Ponds
-  To Be Removed

End Project  
Section 429-205 (2A)  
Begin Project  
Section (4A)

Begin Project  
Section 429-205 (2A)  
End Project  
Section 429-204 (2B)



# Section 2C



**SECTION 429-206 (2C)**  
Preliminary Concept Subject to Change

Begin Project  
Section 429-206 (2C)  
End Project  
Section (3A)

End Project  
Section 429-206 (2C)  
Begin Project  
Section 429-204 (2B)

- LEGEND**
- L.A. Right-of-Way
  - R.E. Walls
  - Bridges
  - Ponds
  - To Be Removed

**WEKIIVA PARKWAY**  
Orange, Lake & Seminole Counties  
June 2012

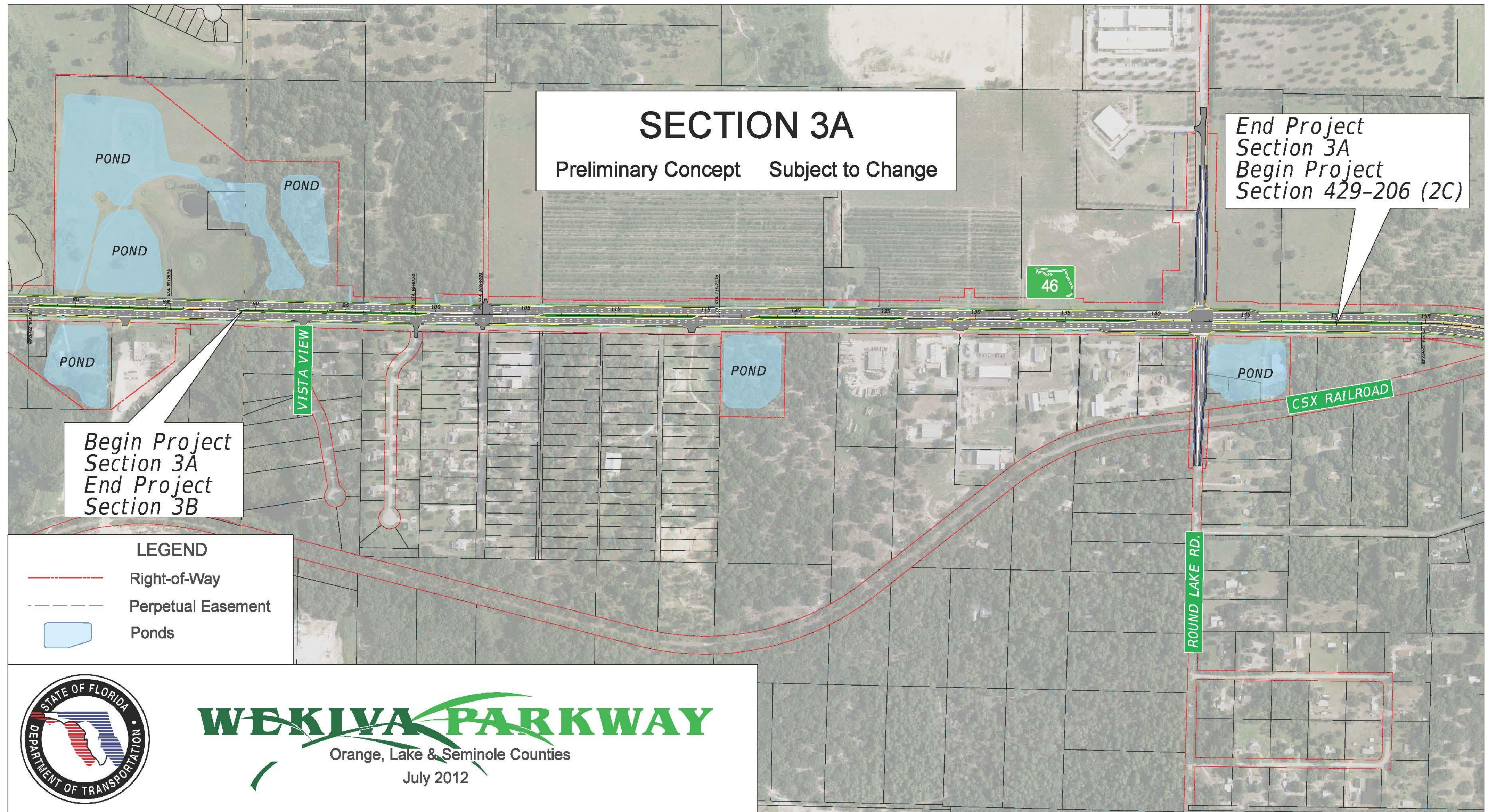
Lake County  
Orange County

# FDOT Sections



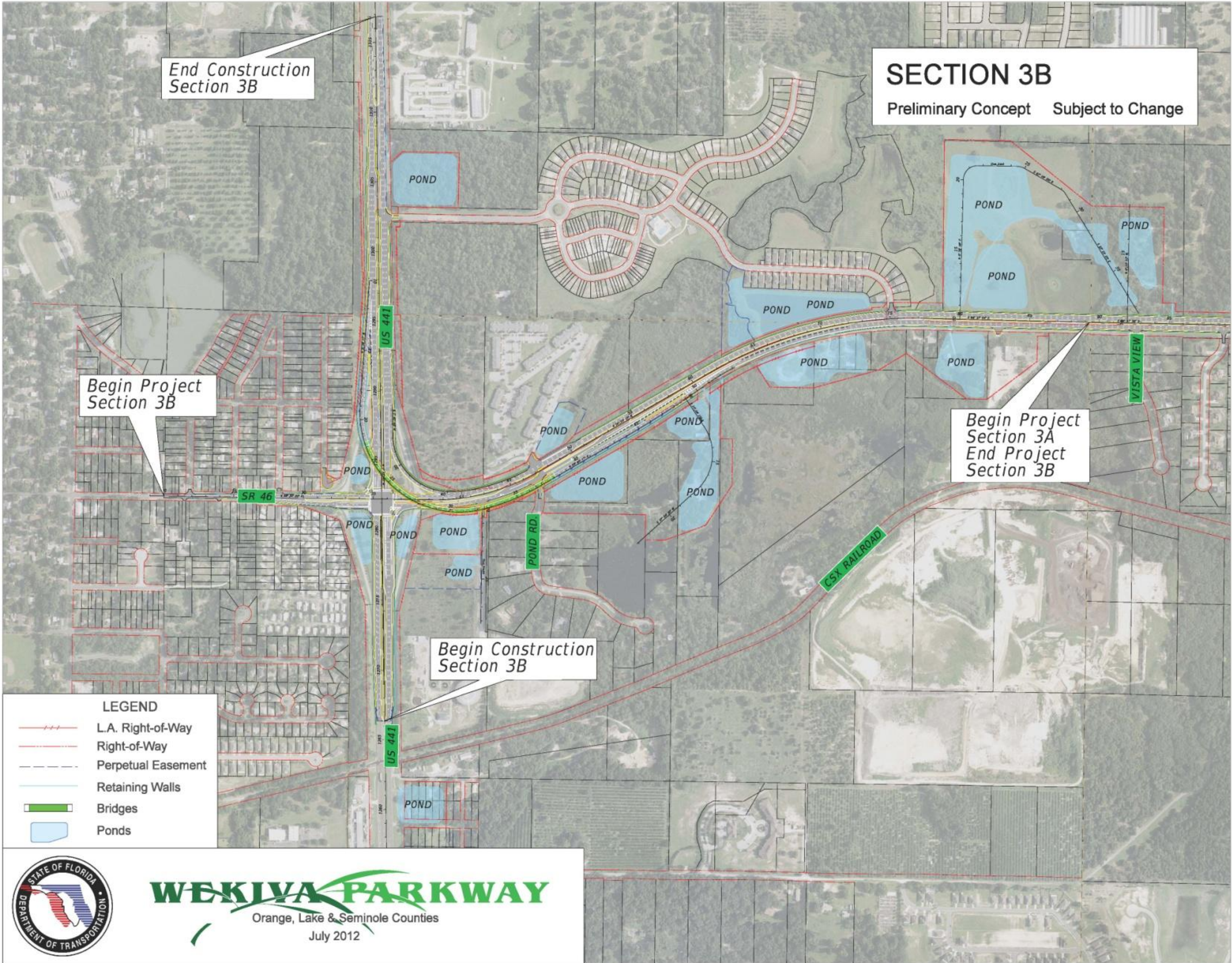


# Section 3A



# Section 3B

**SECTION 3B**  
Preliminary Concept Subject to Change



## WEKIWA PARKWAY

Orange, Lake & Seminole Counties  
July 2012

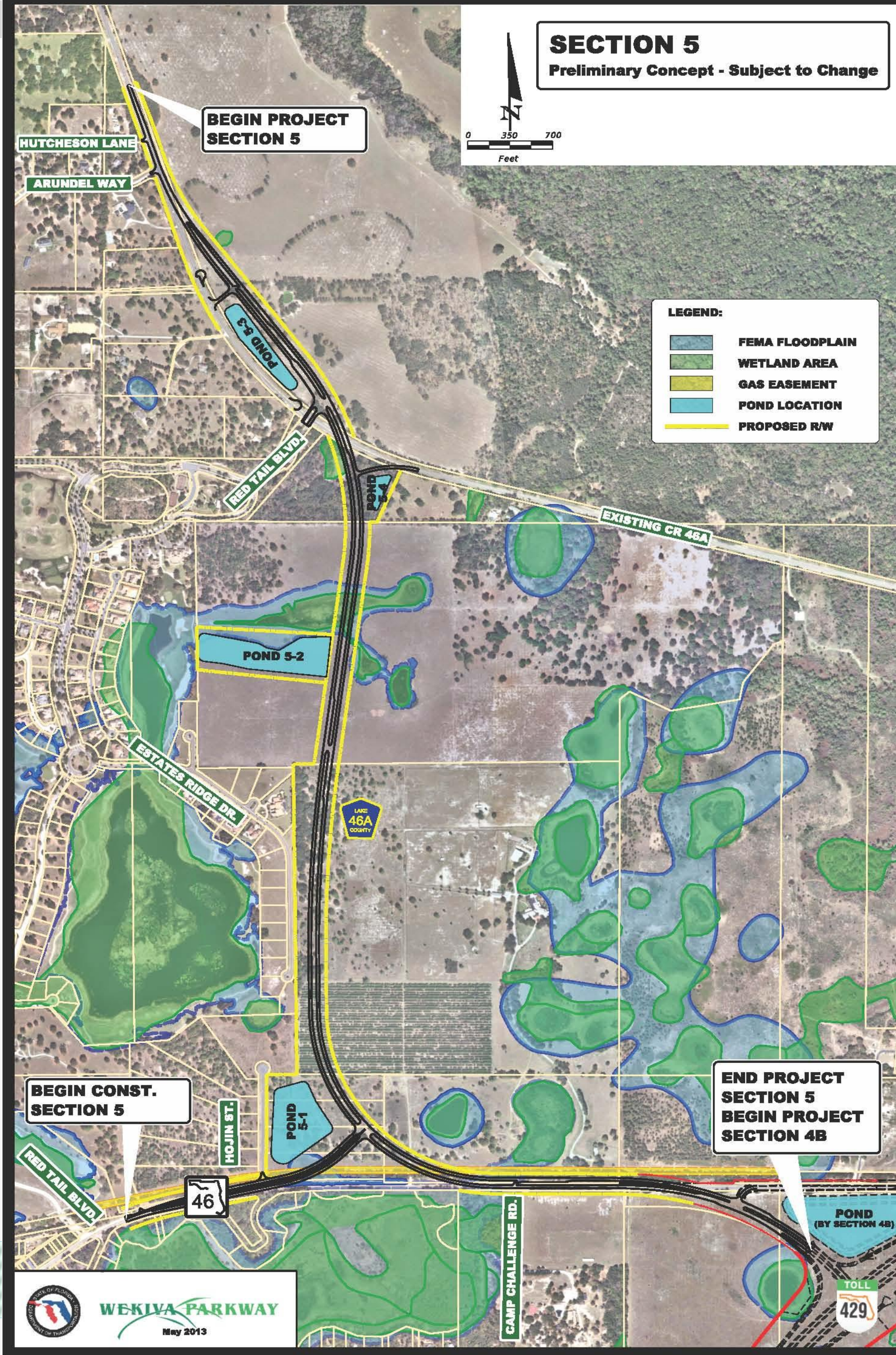
# Section 4A & 4B



# Section 4A & 4B



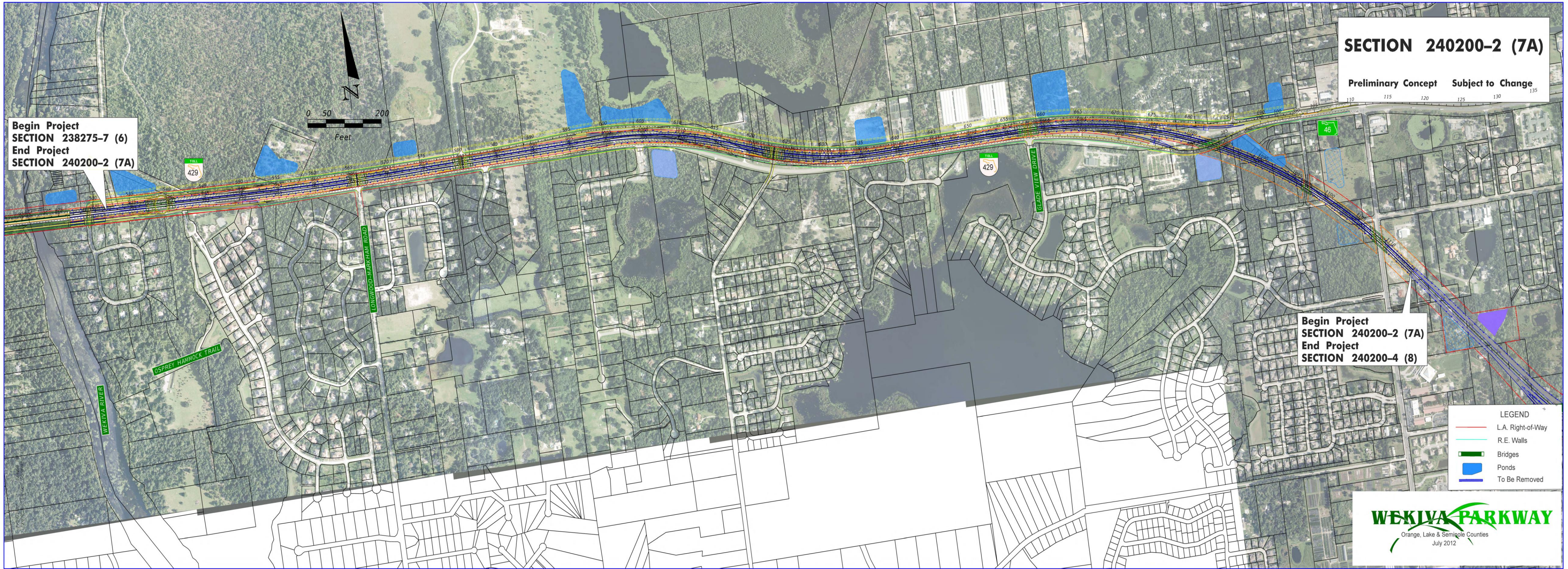
# Section 5



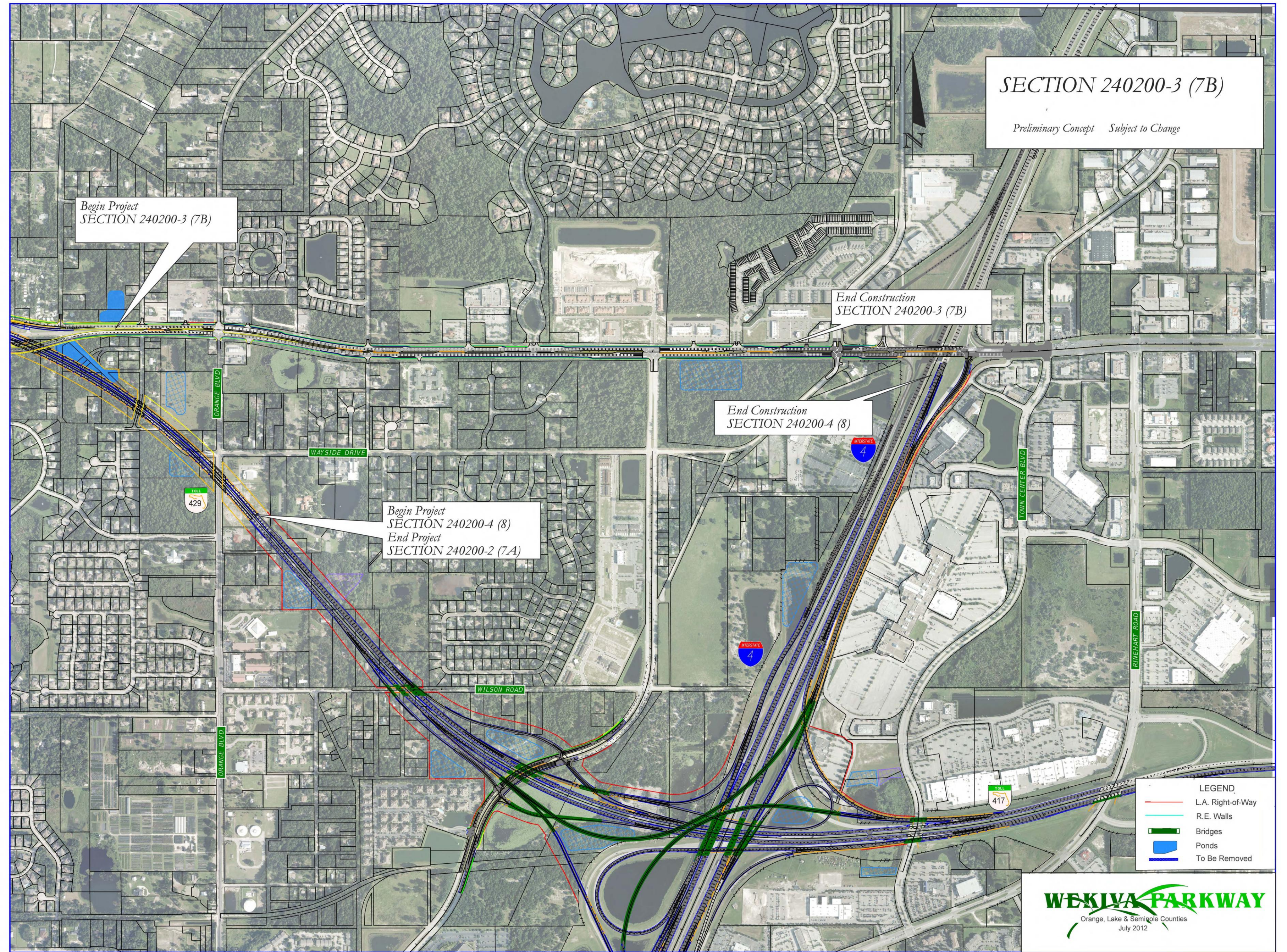
# Section 6



# Section 7A



# Sections 7B & 8







# Wekiva Parkway (SR 429) Schedule\*



	2012				2013				2014				2015				2016				2017				2018				2019				2020				2021							
	Q1	Q2	Q3	Q4	Q1	Q2	Q3	Q4	Q1	Q2	Q3	Q4	Q1	Q2	Q3	Q4	Q1	Q2	Q3	Q4	Q1	Q2	Q3	Q4	Q1	Q2	Q3	Q4	Q1	Q2	Q3	Q4	Q1	Q2	Q3	Q4	Q1	Q2	Q3	Q4				
<b>Section 1A - OOCEA</b>																																												
Final Design																																												
Right of Way																																												
Construction																																												
<b>Section 1B - OOCEA</b>																																												
Final Design																																												
Right of Way																																												
Construction																																												
<b>Section 2B - OOCEA</b>																																												
Final Design																																												
Right of Way																																												
Construction																																												
<b>Section 2A - OOCEA</b>																																												
Final Design																																												
Right of Way																																												
Construction																																												
<b>Section 2C - OOCEA</b>																																												
Final Design																																												
Right of Way																																												
Construction																																												
<b>Section 3A - FDOT</b>																																												
Final Design																																												
Right of Way																																												
Construction																																												
<b>Section 3B - FDOT</b>																																												
Final Design																																												
Right of Way																																												
Construction																																												
<b>Section 4A* &amp; 4B* - FDOT</b>																																												
Design-Build																																												
<b>Section 5 - FDOT</b>																																												
Final Design																																												
Right of Way																																												
Construction																																												
<b>Section 6* - FDOT</b>																																												
Preliminary Design																																												
Right of Way																																												
Design-Build																																												
<b>Section 7A - FDOT</b>																																												
Final Design																																												
Right of Way																																												
Construction																																												
<b>Section 7B* - FDOT</b>																																												
Design-Build																																												
<b>Section 8* - FDOT</b>																																												
Right of Way																																												
Design-Build																																												



# Schedule Recap

The Wekiva Parkway will be completed and **open to traffic\***  
as follows:

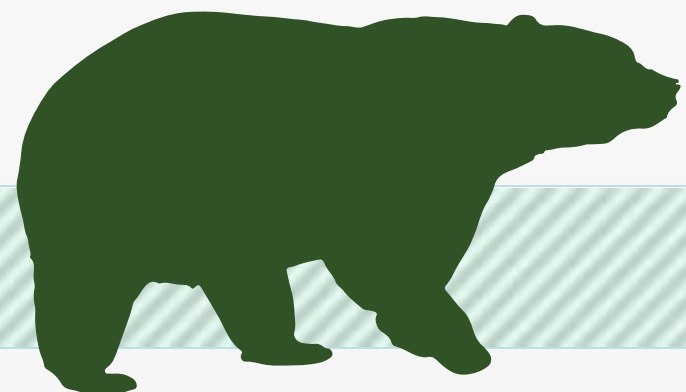
## Orlando-Orange County Expressway Authority Sections:

- 1A & 1B – Late 2016
- 2A, 2B & 2C – 2019

## Florida Department of Transportation Sections

- 3A, 3B & 5 – 2019
- 4A & 4B – Late 2014 (Under Construction)
- 6 – 2020
- 7A – 2020 - 2021
- 7B & 8 – 2021

\*Schedule Subject to Change



# What's Next?

- **Final Design Continues**
- **Continued community coordination**
- **Opportunities for Community Input**
  - ✓ **Public Meetings: Section 3 – July 11, 2013**  
**Section 2 – November 2013**
  - ✓ **Community Presentations**
  - ✓ **Updates & Comments via Website: [www.wekivaparkway.com](http://www.wekivaparkway.com)**
- **First Section (4A & 4B) Open to Traffic – Late 2014**



For More Information:

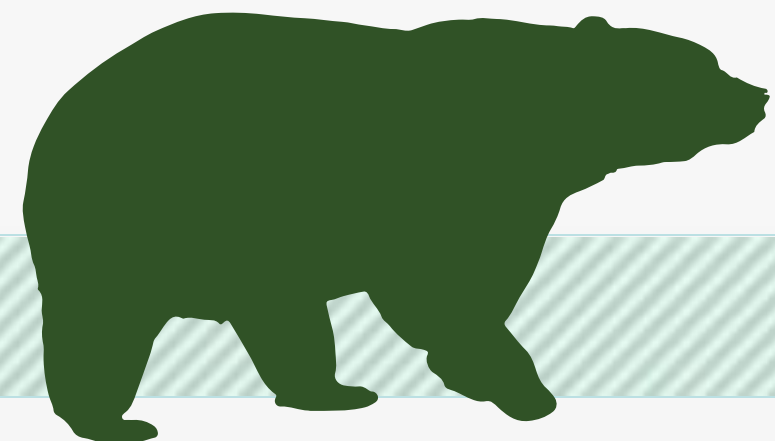
Mary Brooks

Public Involvement Coordinator

C: 407-694-5505

E: [Info@wekivaparkway.com](mailto:Info@wekivaparkway.com)

W: [www.wekivaparkway.com](http://www.wekivaparkway.com)



**WEKIVA PARKWAY**  
Completing Central Florida's Beltway

**TOLL 429**

HOME | FDOT PROJECTS | OOCEA PROJECTS | PROJECTS BY COUNTY | PROJECT HISTORY | FAQ | CONTACT US

**WELCOME**

On behalf of the Florida Department of Transportation and the Orlando-Orange County Expressway Authority, thank you for your interest in the Wekiva Parkway design and construction projects. The Wekiva Parkway (State Road 429) is a cooperative effort between these agencies and the Florida's Turnpike Enterprise.

The Wekiva Parkway (SR 429) would connect to SR 417, completing the beltway around northwest metropolitan Orlando. This estimated \$1.5 billion project includes \$500 million of non-toll road improvements including:

- Building seven (7) miles of four- and six-laning of SR 46 in Lake and Seminole Counties
- Rebuilding the US 441/SR 46 interchange in Mount Dora
- Relocating the CR 46A connection to SR 46 to provide improved wildlife connectivity and additional local road system benefits

[Click here](#) to view the overall project schedule. Please understand schedules are subject to change due to a host of variables.

**WEKIVA PARKWAY PROJECT SECTION MAP**

Click on a Section Number for Project Details.

**LATEST NEWS**

Click on text for details

**August 2013**  
OOCEA Reaches 60% Design Plans on Section 2A

**July 2013**  
FDOT Kicks Off Design for Section 7A

**July 2013**  
Gov. Scott Kicks Off Wekiva Parkway - July 10, 2013

**July 2013**  
150 Attend Section 3A & 3B Public Meeting Open House - July 11, 2013

**June 2013**  
Nearly 200 Attend FDOT Section 8 Public Meeting - June 11, 2013

**May 2013**  
Lake Co. Commissioners Adopt Recommended CR 46A Alignment

**PUBLIC MEETING - Sections 3A & 3B Preliminary Design Open House Reop**

**PROJECT DOCUMENTS**

**PRESENTATIONS**

**PRESS RELEASES**

All News

**CONTACT US**

Mary Brooks  
Public Information Officer  
[Info@wekivaparkway.com](mailto:Info@wekivaparkway.com)  
407-694-5505

The 25-mile tolled expressway will provide travel alternatives and relieve US 441, SR 46 and other area roads of traffic congestion resulting from growth and travel between Orange, Lake and Seminole Counties.

Authorized in 2004 by the Wekiva Parkway and Protection Act (Chapter 369, Part III, F.S.), this expressway has been heralded as a shining example for transportation planning through an environmentally sensitive area. Development of the Wekiva Parkway has included setting aside more than 3,400 acres of



# WEKIWA PARKWAY

Completing Central Florida's Beltway



Thank You!  
Questions?

