

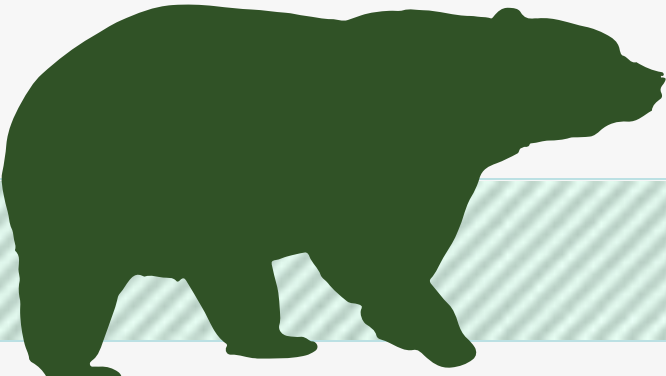


A Regional Transportation Solution

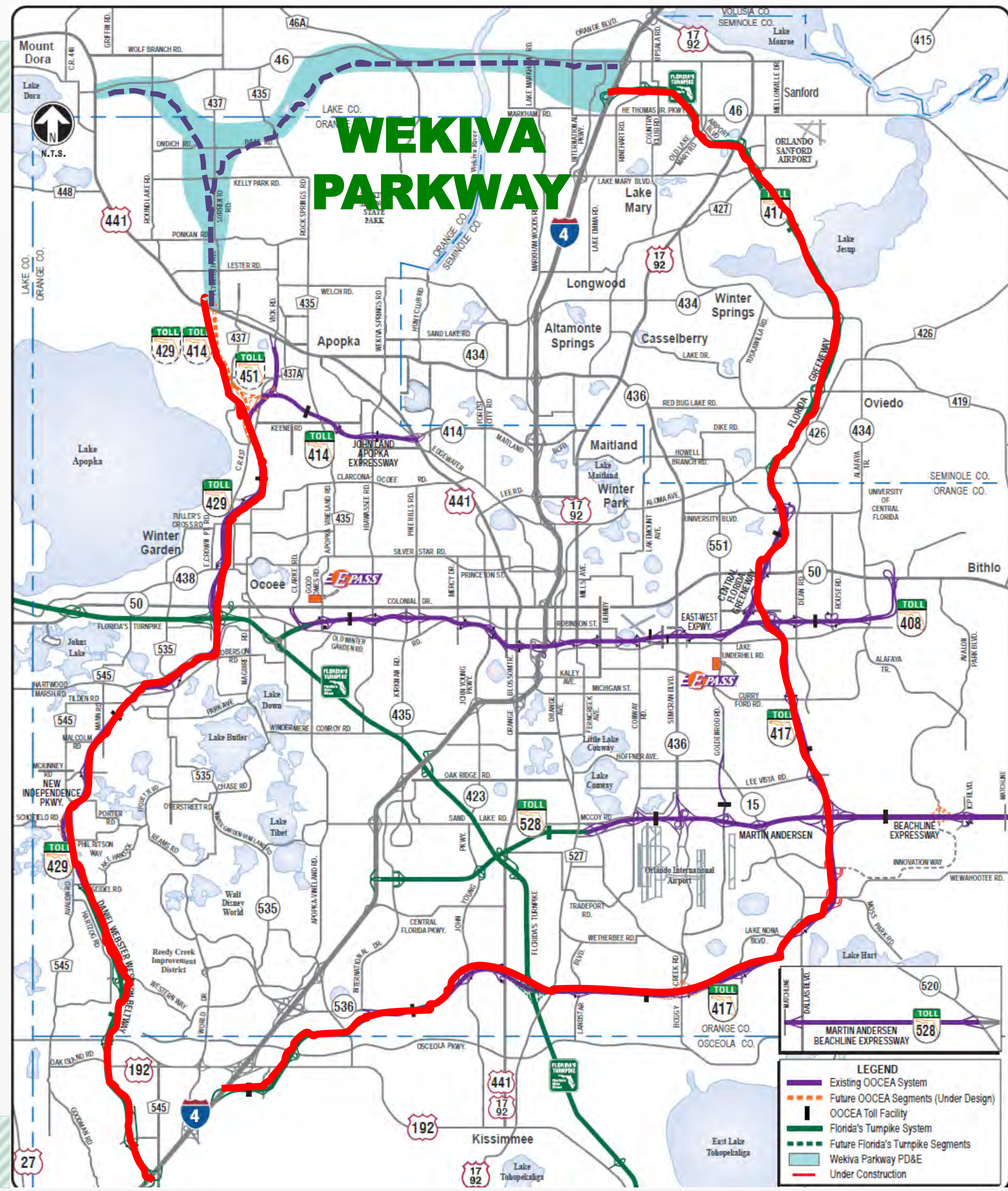
**Seminole County Board of
County Commissioners Update
June 10, 2014**



Funding Partners



WEKIVA PARKWAY



LEGEND

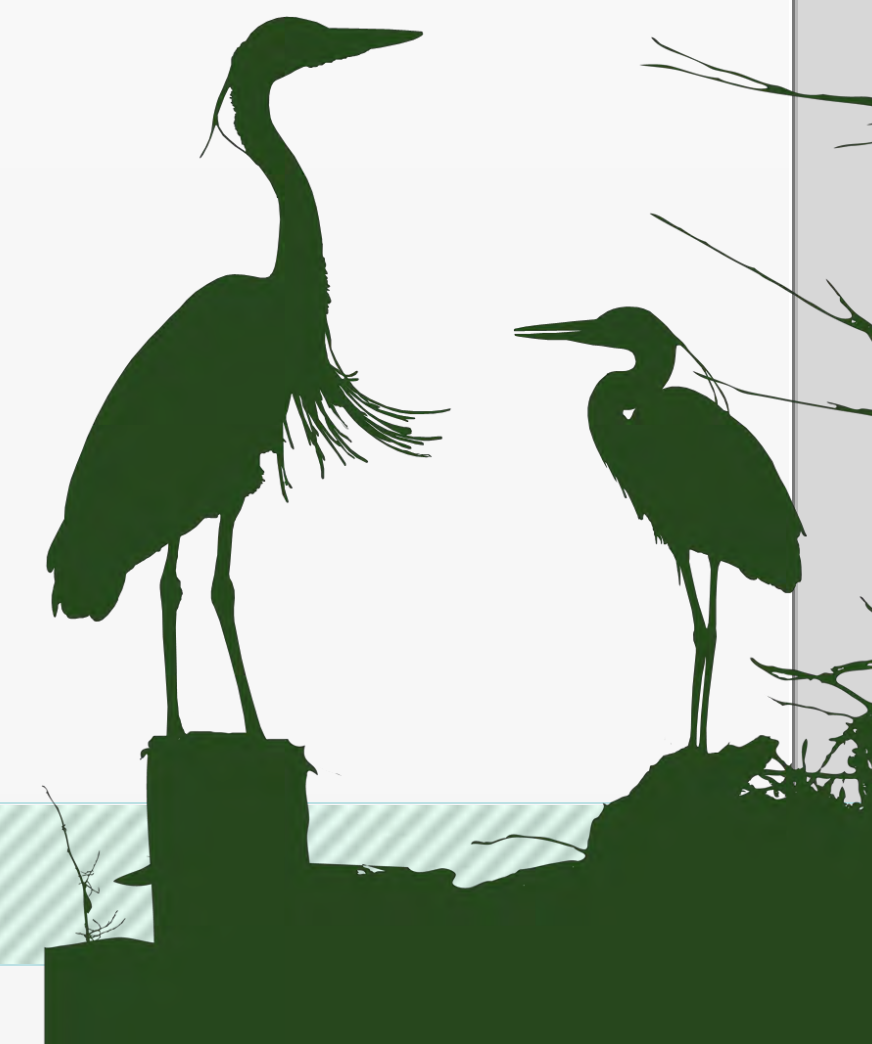
- Existing OOCEA System
- Future OOCEA Segments (Under Design)
- OOCEA Toll Facility
- Florida's Turnpike System
- Future Florida's Turnpike Segments
- Wekiva Parkway PD&E
- Under Construction



Project Description

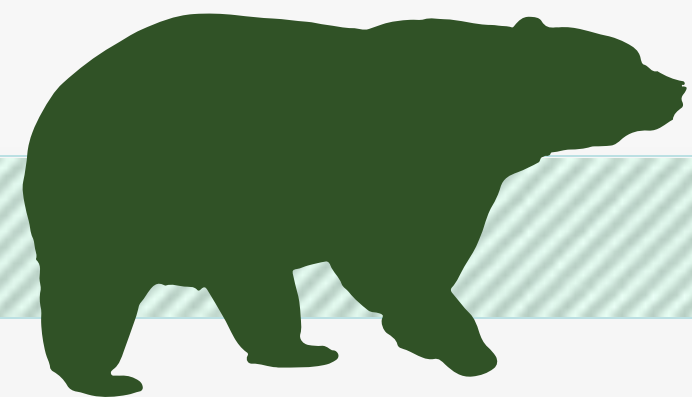
- **\$1.6 Billion Completion of Central Florida's Beltway**
- **25-mile Toll Road**
- **Non-Toll Road Improvements:**
 - **Widening SR 46 in Lake & Seminole Counties**
 - **Rebuilding the US 441/SR 46 Interchange in Mount Dora**
 - **Relocating CR 46A to Improve Wildlife Connectivity**
 - **Parallel Service Roads in East Lake & Seminole Counties**
- **Multi-use Trail (Portions of East Lake & Seminole Counties)**

WEKIIVA PARKWAY



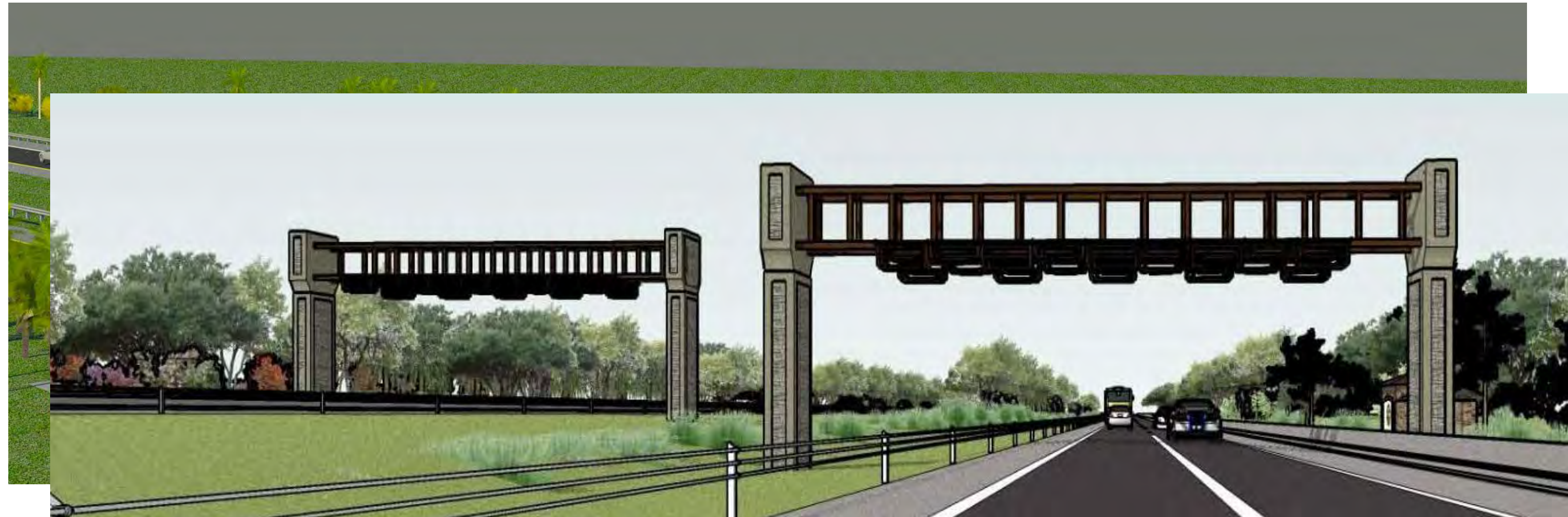
Protecting Nature

- **Wekiva River: Outstanding Florida Water & National Wild & Scenic River**
- **Authorized by the 2004 Wekiva Parkway and Protection Act**
 - **Setting Aside More than 3,400 Acres for Conservation**
 - **Largely Elevated to Reduce Accidents Between Vehicles & Wildlife**
 - **Several Wildlife Bridges**
 - **Few Interchanges (Reduce Development)**



All Electronic Tolling (AET)

- First in Central Florida
- No Toll Plazas (SUNPass or E-Pass)
- Improved Traffic Flow Efficiency
- Enhanced Safety
- Reduced Noise
- Toll Costs Pending



PROJECT ECONOMIC IMPACT

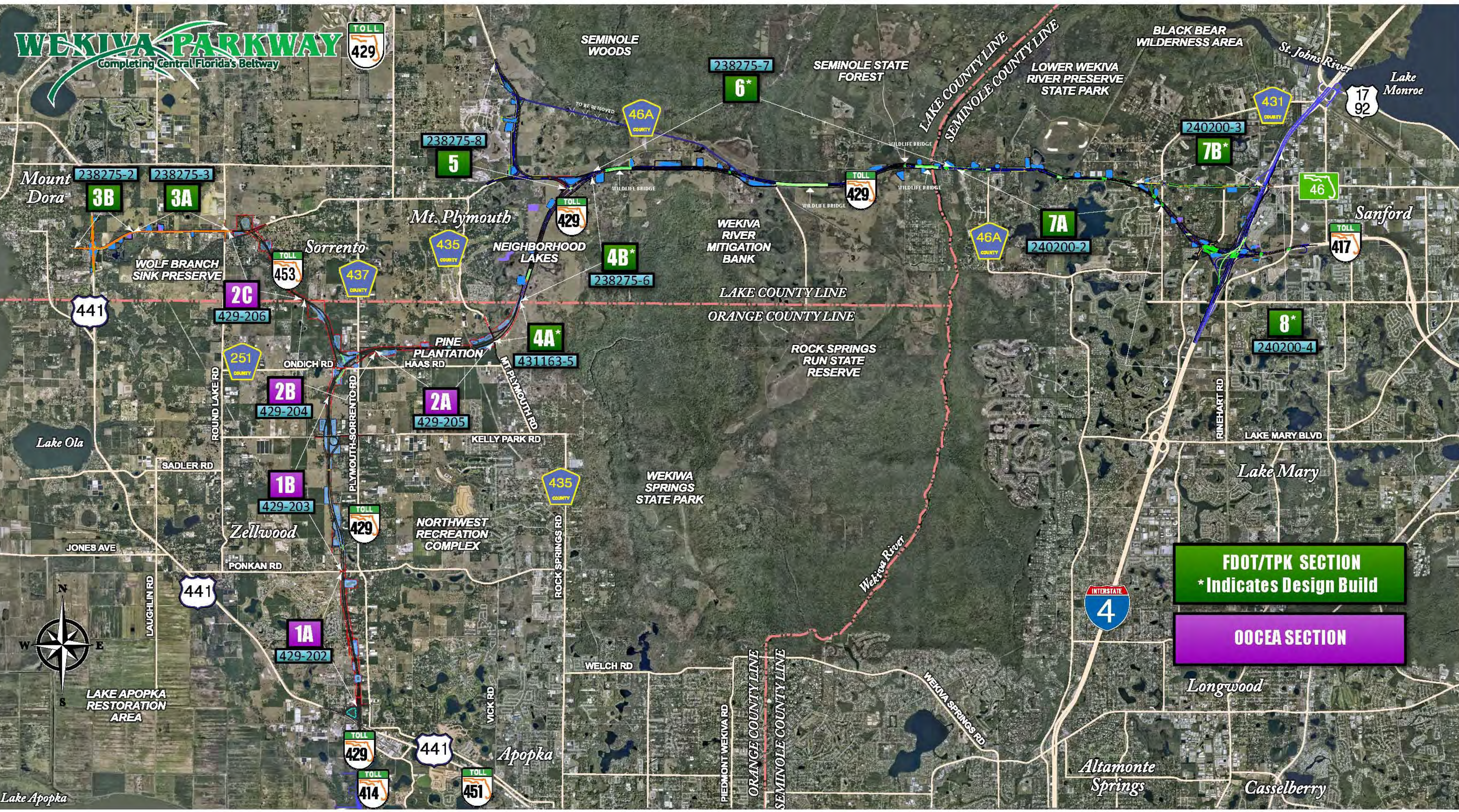
At an estimated cost of \$1.6 Billion for Engineering & Construction, the Wekiva Parkway is Projected to Provide:

Construction Related Jobs	12,272
Supporting Industries Jobs	5,570
Induced Employment Jobs	17,983

***Estimated Total Jobs 35,825**

WEKIVA PARKWAY

Completing Central Florida's Beltway



FDOT/TPK SECTION
* Indicates Design Build

OOCEA SECTION



Design Status

SECTION	MILESTONE	SUBMITTAL SCHEDULE
1A	100%	July 2014
1B	100%	June 2014
2A	100%	June 2014
2B	100%	June/July 2014
2C	90%	July 2014
3A	90%	August 2014
3B	90%	August 2014
5	90%	November 2014
6	90%	November 2014
7A	90%	November 2014
7B & 8	Design-Build	



Expressway Authority Sections



Pier Option

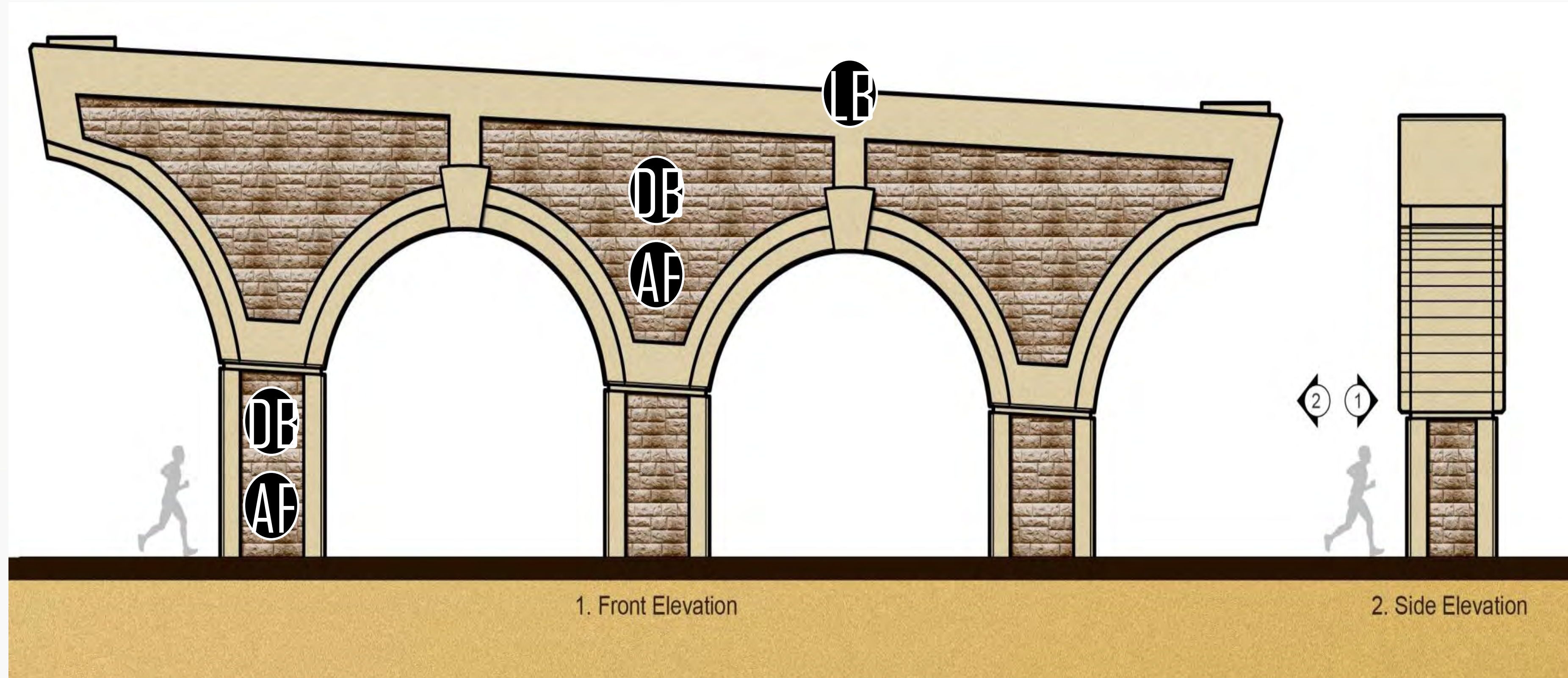
Standard Colors



Light Brown
Dark Green



Dark Brown
Ashlar Formline



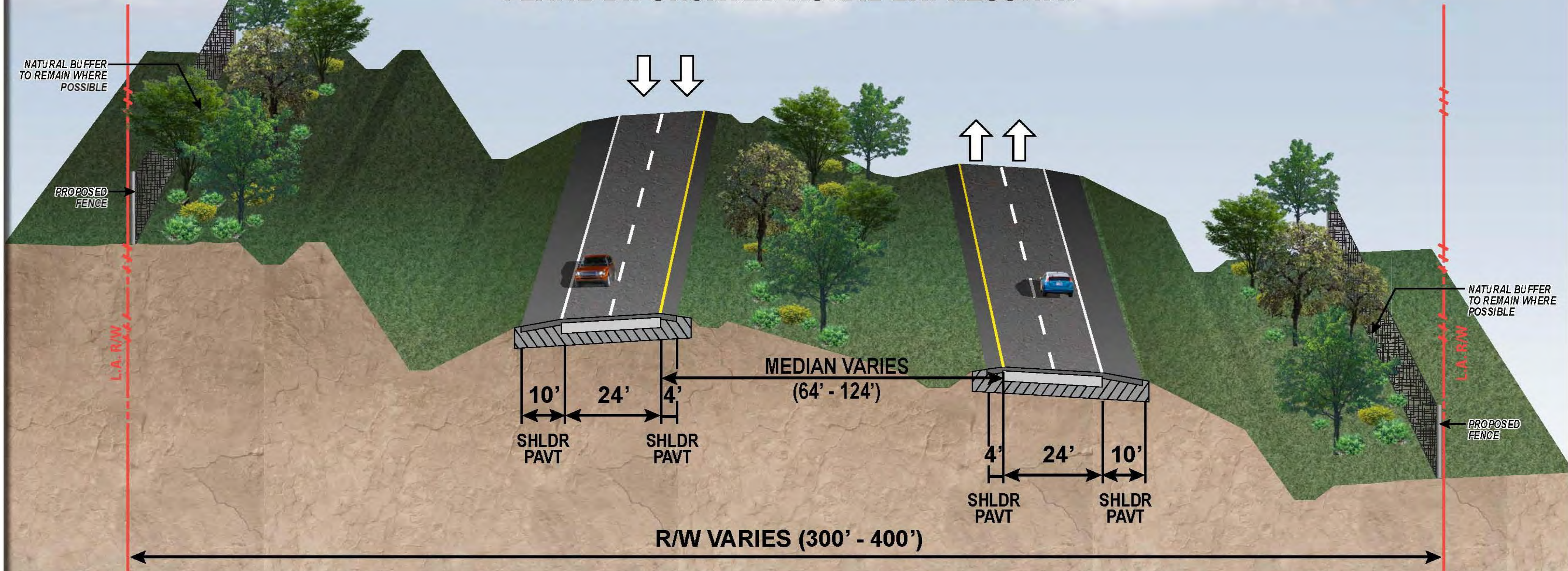
1. Front Elevation

2. Side Elevation

WEKIVA PARKWAY

TYPICAL SECTION

SR 429 (WEKIVA PARKWAY) 4-LANE BIFURCATED RURAL EXPRESSWAY



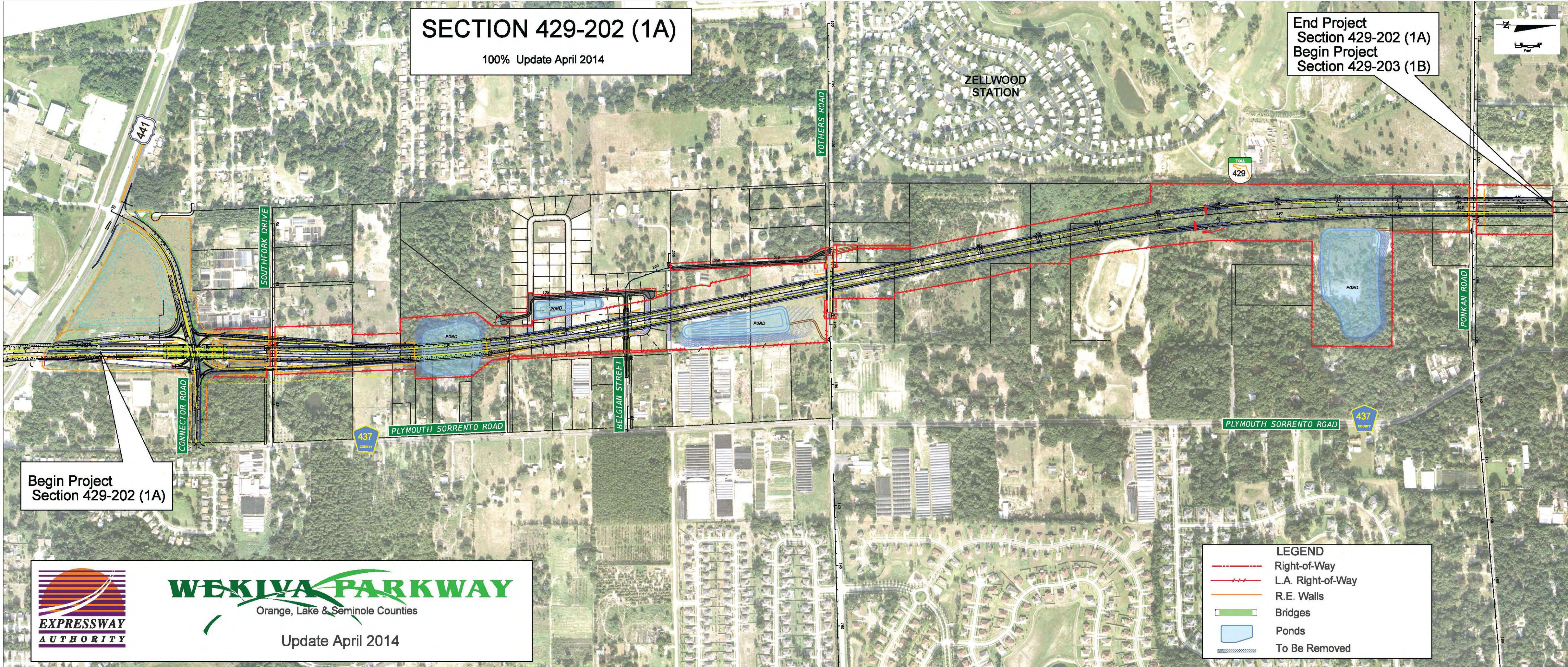
NOTE: PRELIMINARY, SUBJECT TO CHANGE



Section 1A

SECTION 429-202 (1A)
100% Update April 2014

End Project
Section 429-202 (1A)
Begin Project
Section 429-203 (1B)



Begin Project
Section 429-202 (1A)



WEKIVA PARKWAY

Orange, Lake & Seminole Counties

Update April 2014

LEGEND	
	Right-of-Way
	L.A. Right-of-Way
	R.E. Walls
	Bridges
	Ponds
	To Be Removed

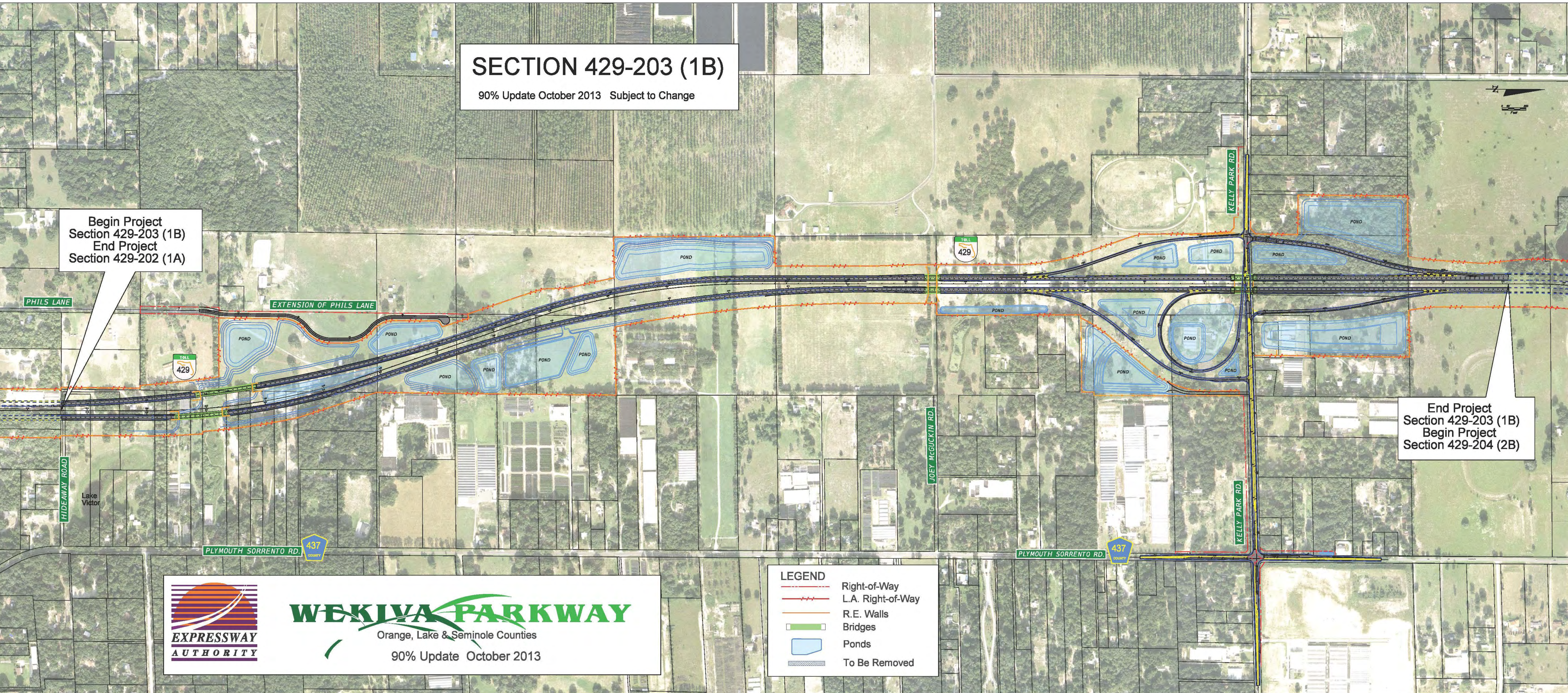
Section 1B

SECTION 429-203 (1B)

90% Update October 2013 Subject to Change

Begin Project
Section 429-203 (1B)
End Project
Section 429-202 (1A)

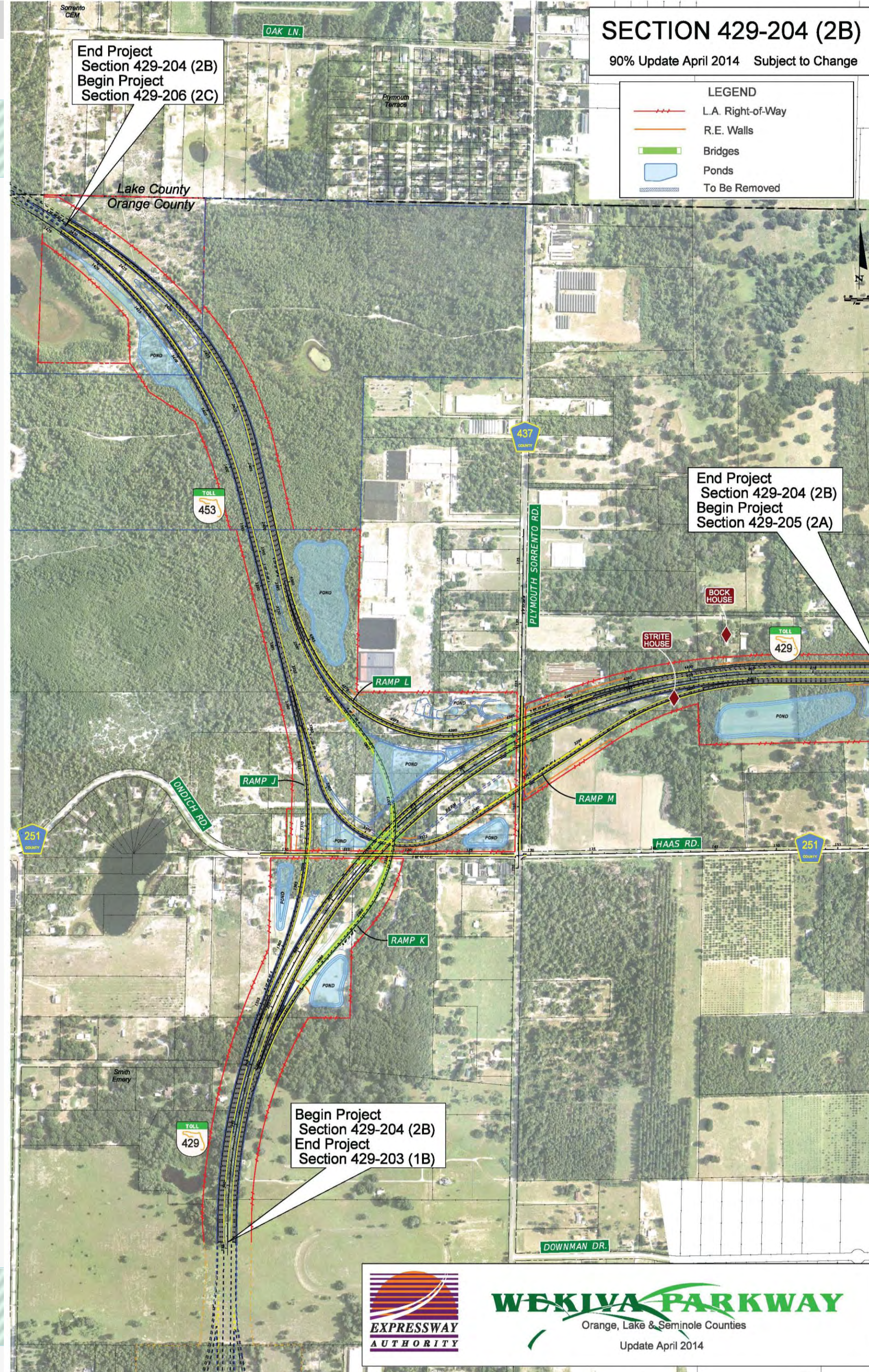
End Project
Section 429-203 (1B)
Begin Project
Section 429-204 (2B)



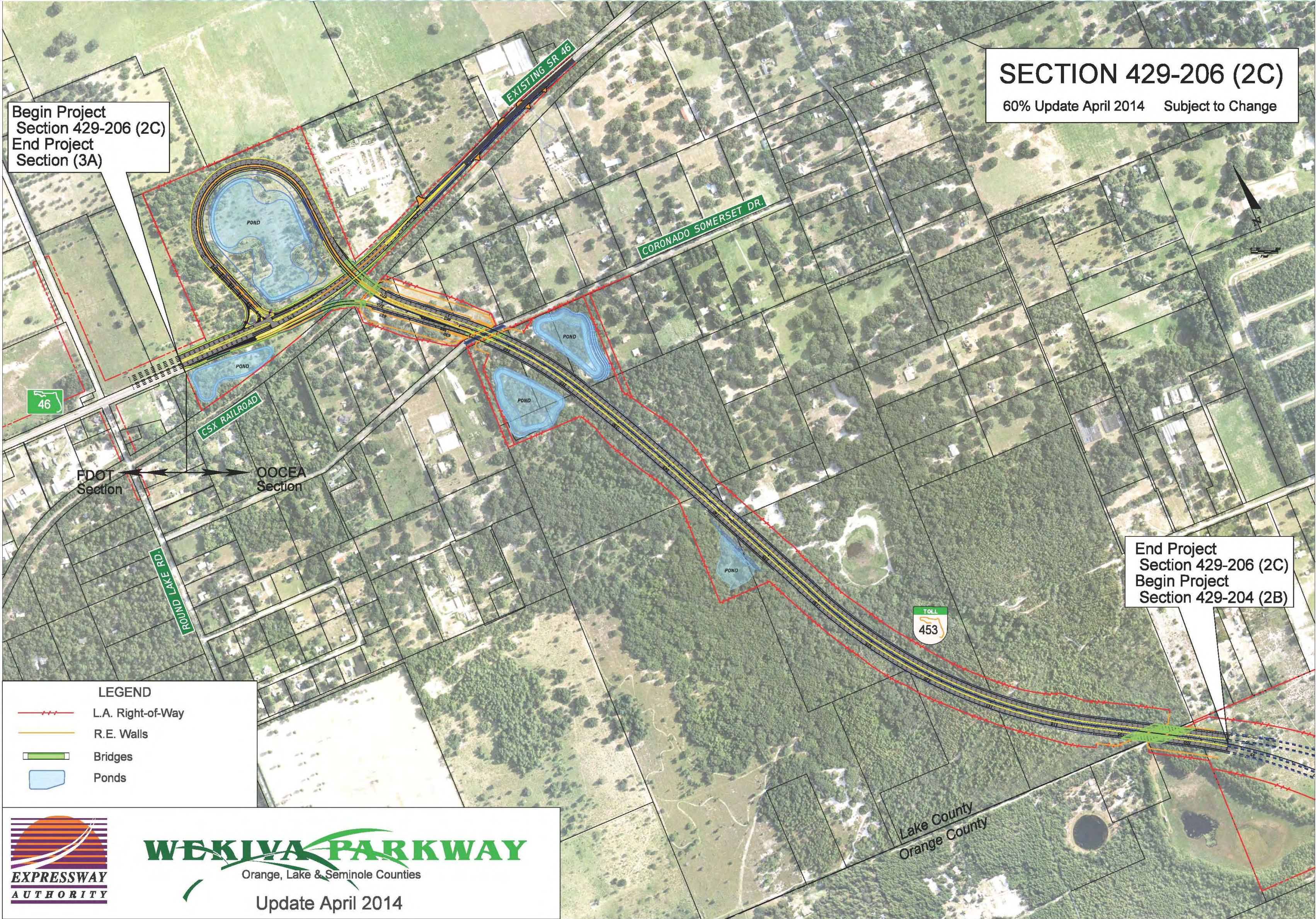
WEKIWA PARKWAY
Orange, Lake & Seminole Counties
90% Update October 2013

LEGEND	
	Right-of-Way
	L.A. Right-of-Way
	R.E. Walls
	Bridges
	Ponds
	To Be Removed

Section 2B

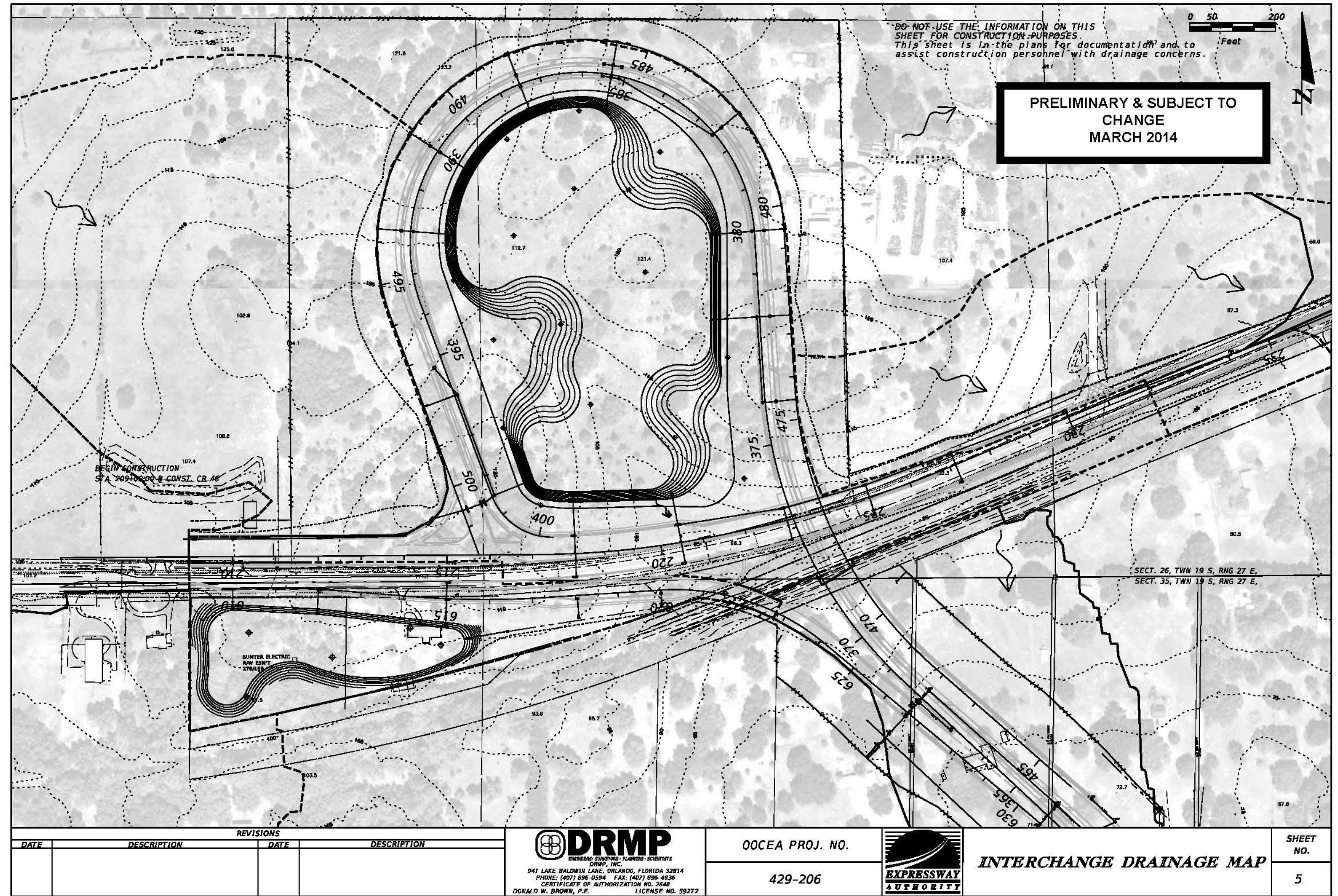


Section 2C



WEKIWA PARKWAY
 Orange, Lake & Seminole Counties
 Update April 2014

Section 2C - Pond Contours



FDOT Sections



Section 4A & 4B



Section 4A & 4B



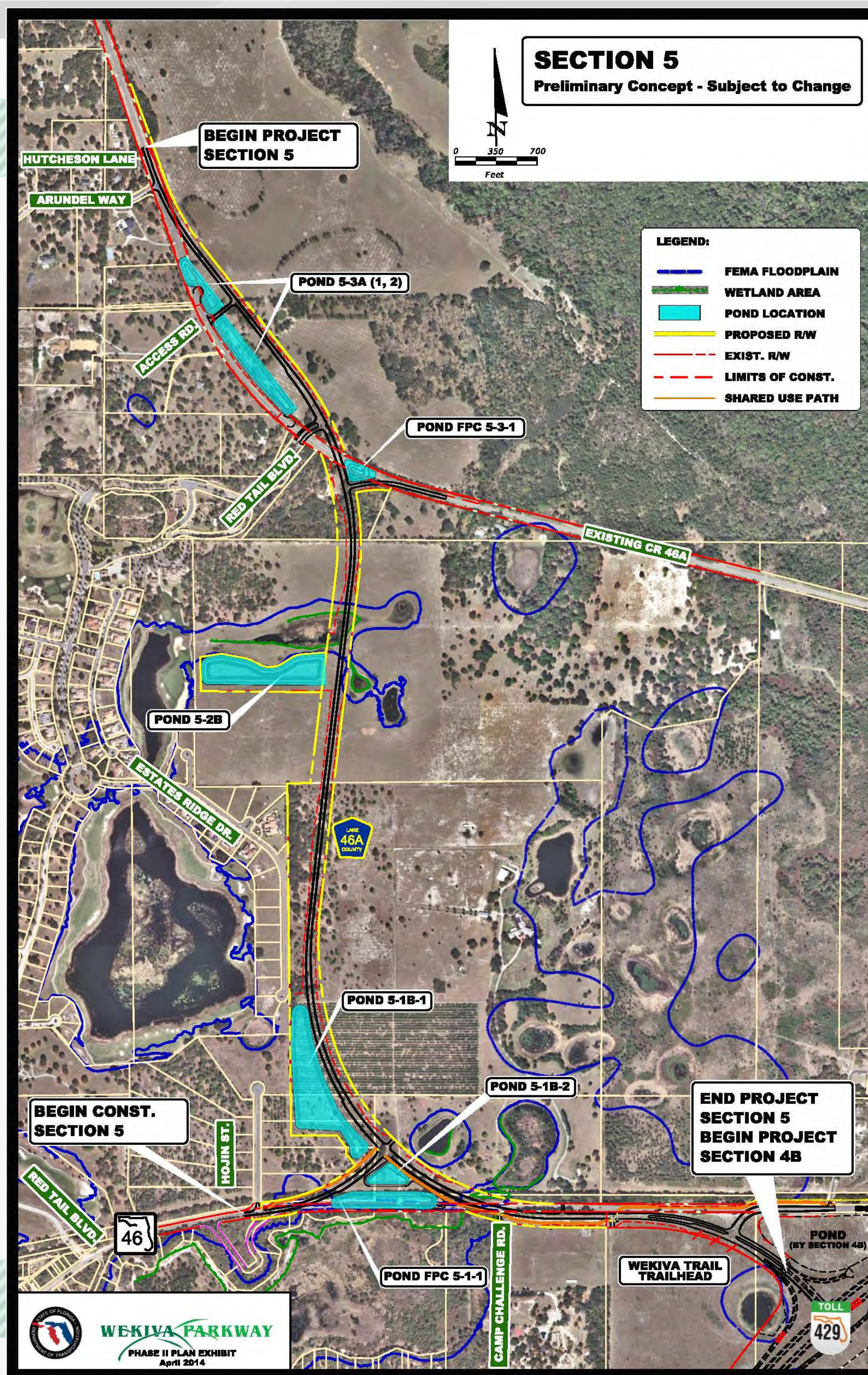
Section 4A & 4B



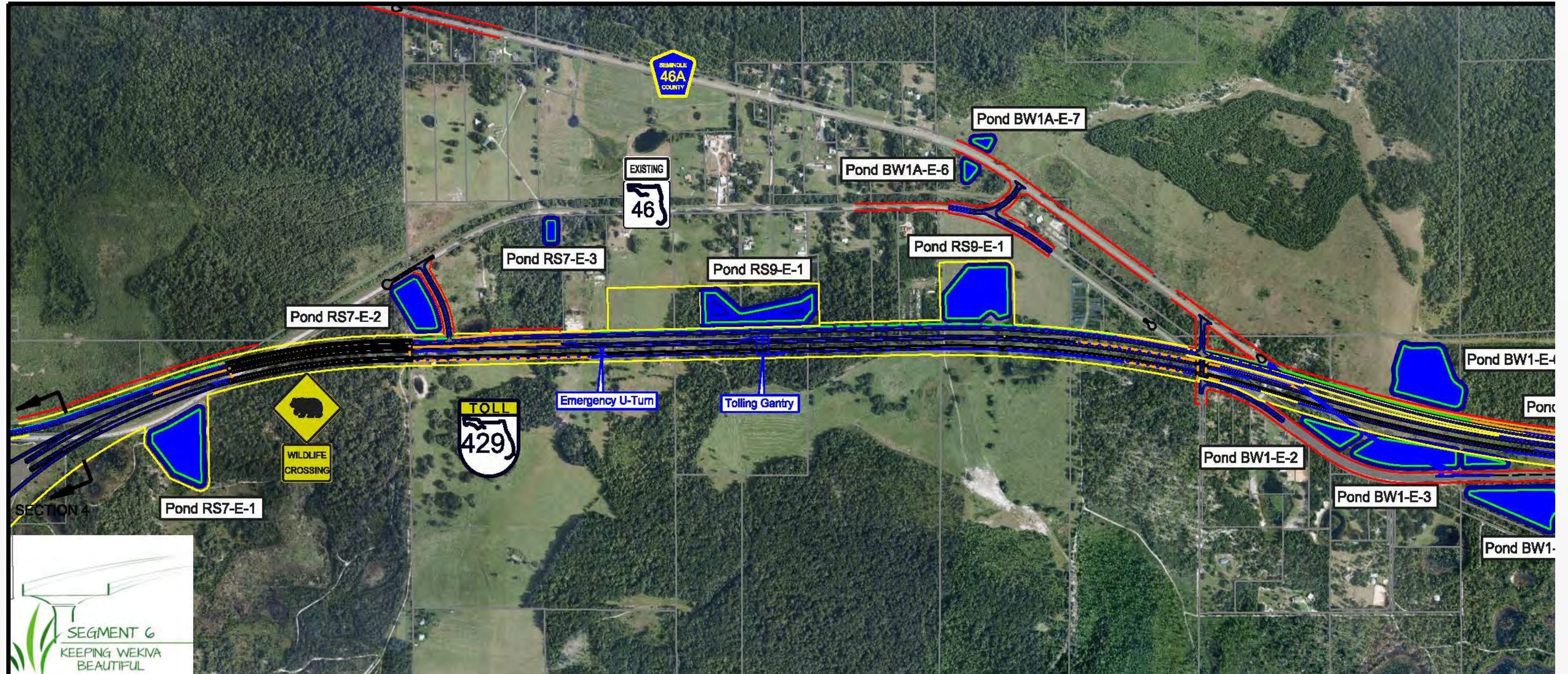
Section 4A & 4B



Section 5



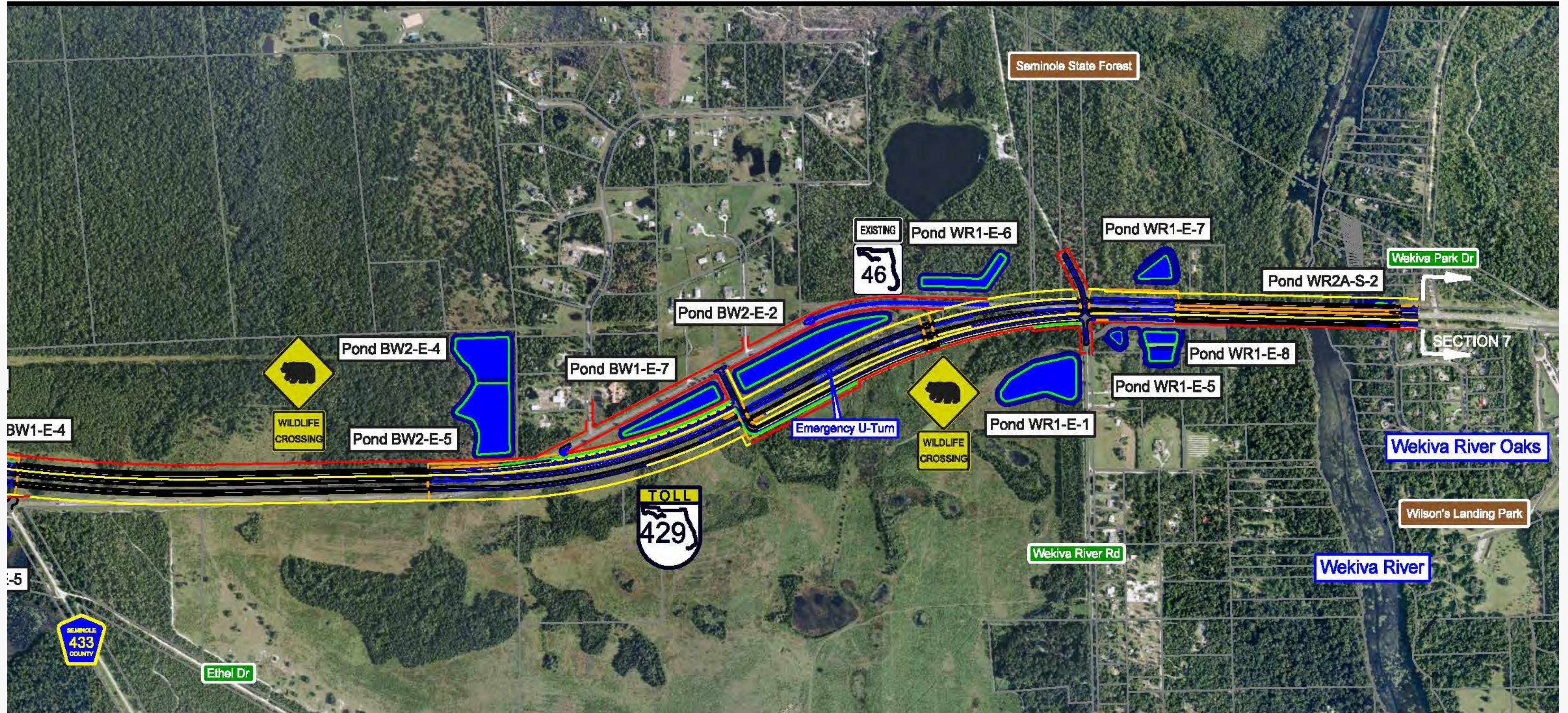
Section 6 - West



SECTION 4

SEGMENT 6
KEEPING WEKIVA
BEAUTIFUL

Section 6 - East



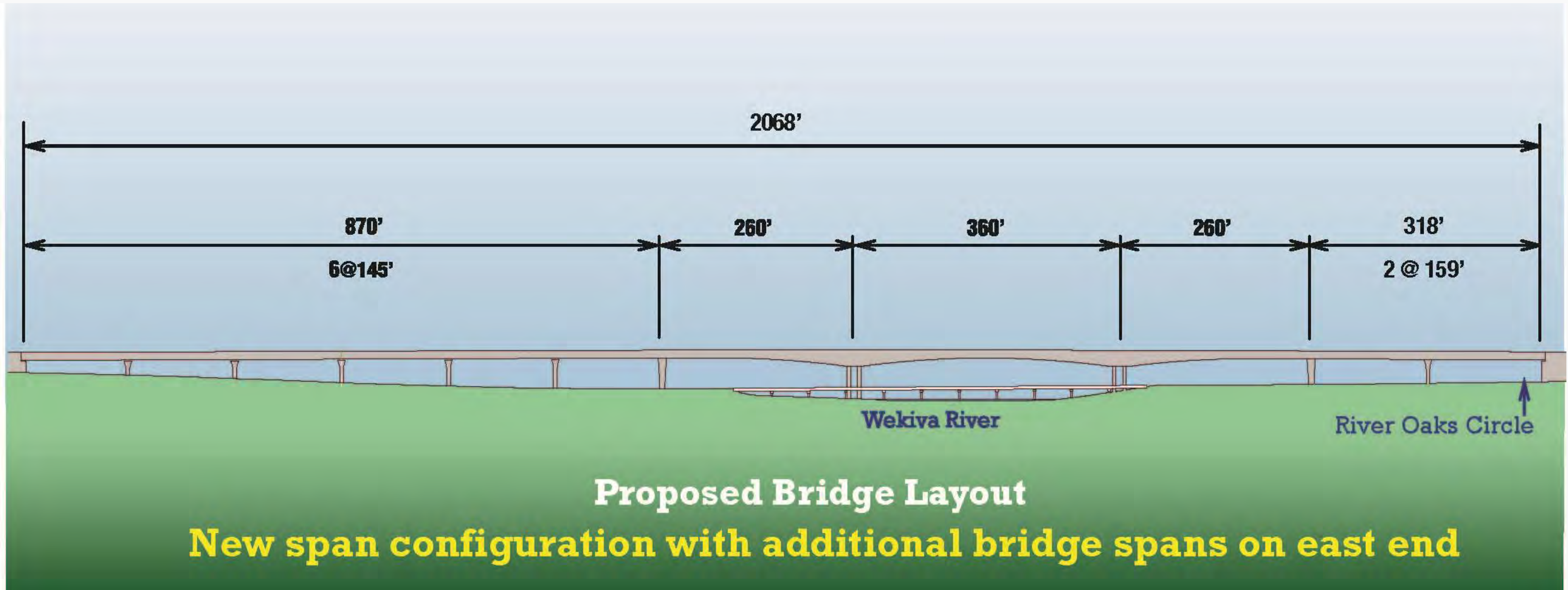
Wekiva River Bridge - Profile



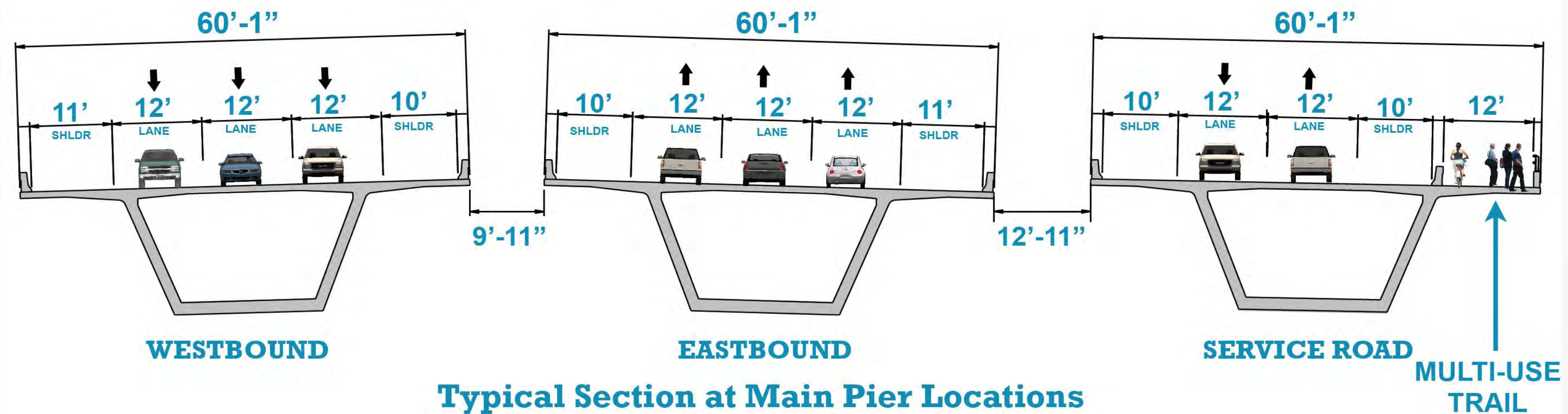
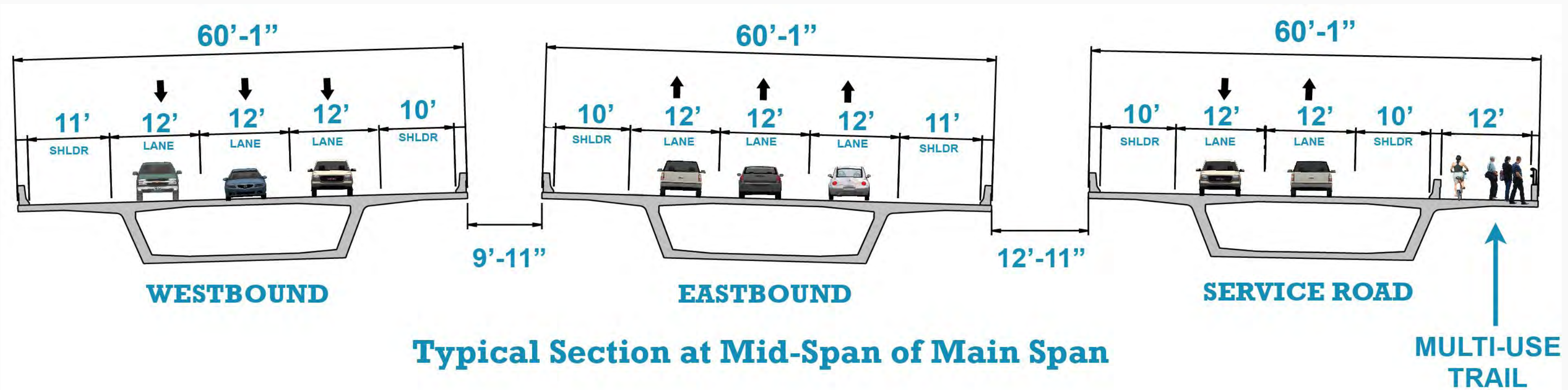
Wekiva River Bridges – River User's View



Wekiva River Bridge - Layout



Wekiva River Bridge - Cross Sections

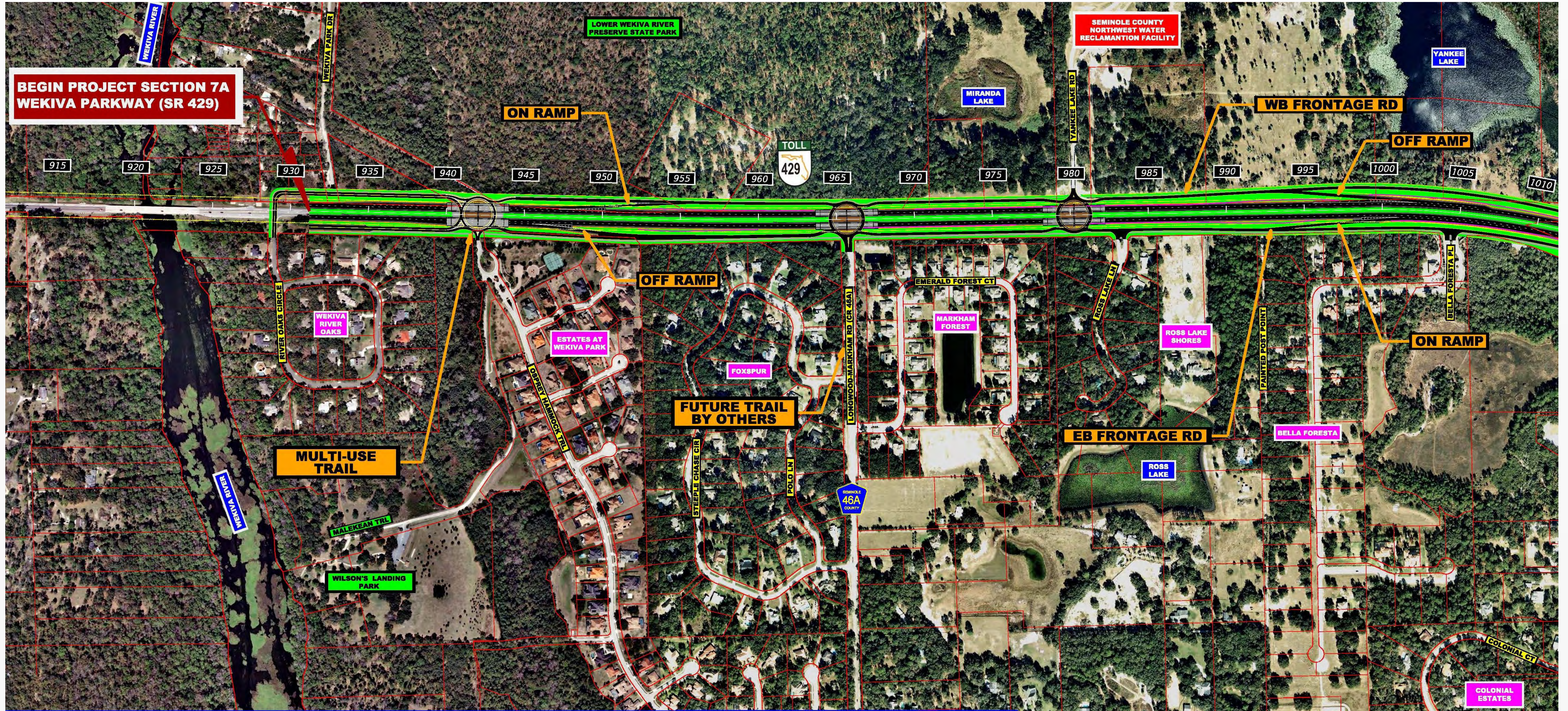


***Showing ultimate configuration.
Parkway bridges will have 2 lanes in each direction
for initial configuration.***





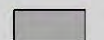



Wekiva River – Ped Rail



Section 7A - West



LEGEND

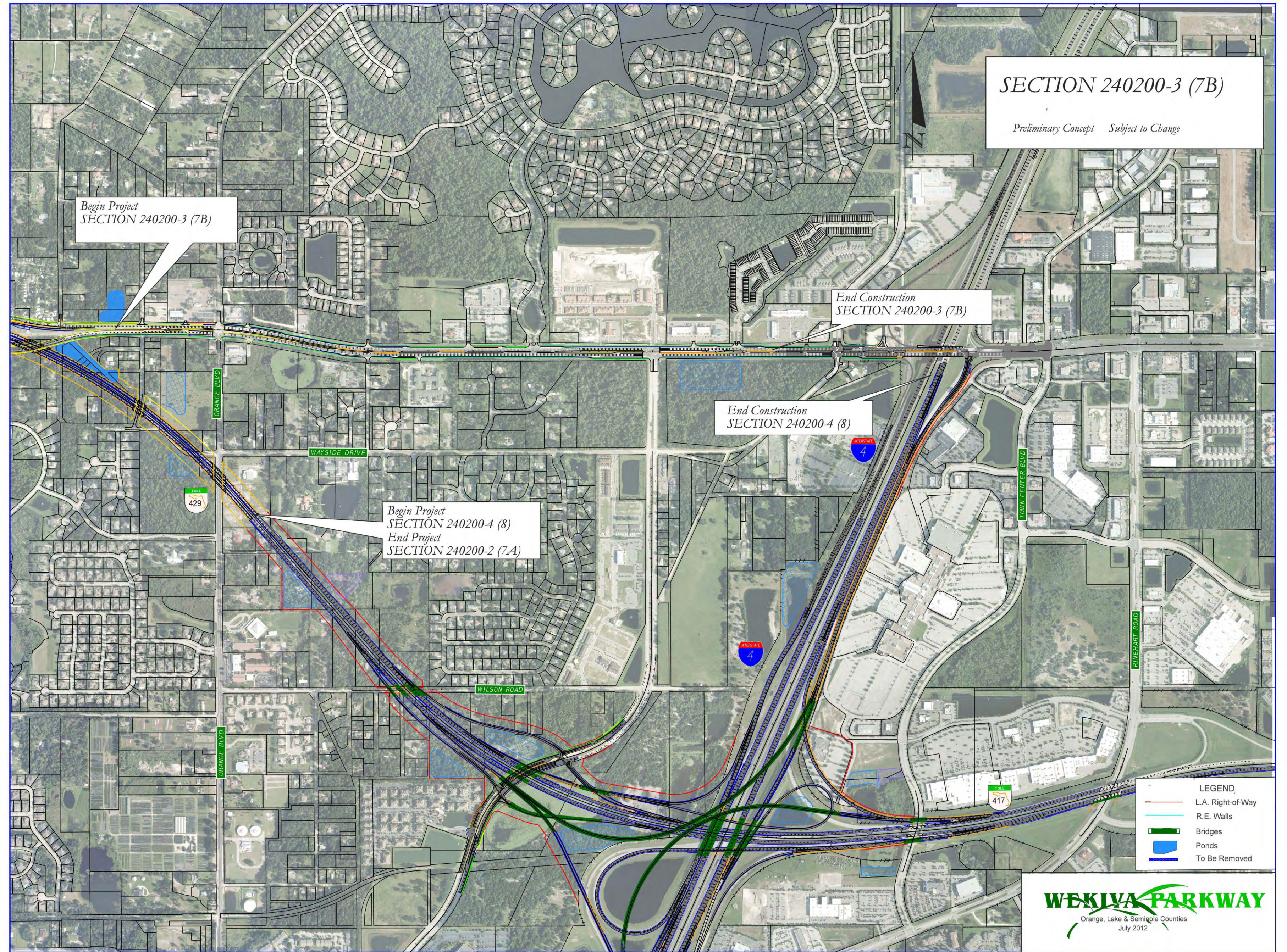
	PROPOSED ROADWAY		SOD		SIGNALIZED INTERSECTION
	PROPOSED BRIDGE		PROPOSED SIDEWALK & SHARED USE PATH		EXISTING ROW & PROPERTY LINE
	PROPOSED L/A ROW		PROPOSED ROW		



Section 7A – Roundabout Concept



Sections 7B & 8



What's Next?

- **Final Design: Completion 2015**
- **Opportunities for Community Input**

Public Meetings: Section 3A & 3B – June 24, 2014
Mount Dora Comm. Ctr., 6 p.m. - 8 p.m.

Section 7A – Fall 2014

Community Presentations

Updates & Comments via Website: www.wekivaparkway.com

- **First Section (4A & 4B) Open to Traffic – Early 2015**
- **First OOCEA Sections Begin Construction – Early 2015**



For More Information:

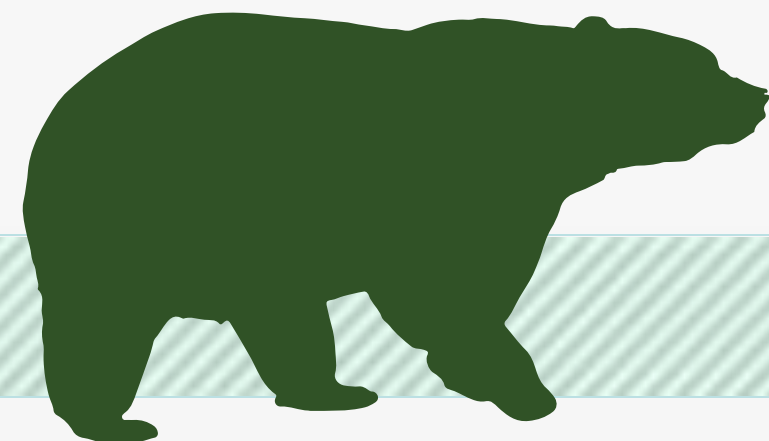
Mary Brooks

Public Involvement Coordinator

C: 407-694-5505

E: Info@wekivaparkway.com

W: www.wekivaparkway.com



WEKIVA PARKWAY
Completing Central Florida's Beltway

TOLL 429

HOME | PROJECTS | COCEA PROJECTS | PROJECTS BY COUNTY | PROJECT HISTORY | FAQ | CONTACT US

WELCOME

On behalf of the Florida Department of Transportation and the Orlando-Orange County Expressway Authority, thank you for your interest in the Wekiva Parkway design and construction projects. The Wekiva Parkway (State Road 429) is a cooperative effort between these agencies and the Florida's Turnpike Enterprise.

The Wekiva Parkway (SR 429) would connect to SR 417, completing the beltway around northwest metropolitan Orlando. This estimated \$1.5 billion project includes \$500 million of non-toll road improvements including:

- Building seven (7) miles of four- and six-laning of SR 46 in Lake and Seminole Counties
- Rebuilding the US 441/SR 46 interchange in Mount Dora
- Relocating the CR 46A connection to SR 46 to provide improved wildlife connectivity and additional local road system benefits

[Click here](#) to view the overall project schedule. Please understand schedules are subject to change due to a host of variables.

WEKIVA PARKWAY PROJECT SECTION MAP

Click on a Section Number for Project Details.

[Click here to view larger map](#)

The 25-mile tolled expressway will provide travel alternatives and relieve US 441, SR 46 and other area roads of traffic congestion resulting from growth and travel between Orange, Lake and Seminole Counties.

Authorized in 2004 by the Wekiva Parkway and Protection Act (Chapter 369, Part III, F.S.), this expressway has been heralded as a shining example for transportation planning through an environmentally sensitive area. Development of the Wekiva Parkway has included setting aside more than 3,400 acres of

LATEST NEWS

Click on text for details

August 2013
COCEA Reaches 60% Design Plans on Section 2A

July 2013
FDOT Kicks Off Design for Section 7A

July 2013
Gov. Scott Kicks Off Wekiva Parkway - July 10, 2013

July 2013
150 Attend Section 3A & 3B Public Meeting Open House - July 11, 2013

June 2013
Nearly 200 Attend FDOT Section 8 Public Meeting - June 11, 2013

May 2013
Lake Co. Commissioners Adopt Recommended CR 46A Alignment

PUBLIC MEETING - Sections 3A & 3B Preliminary Design Open House Reop

PROJECT DOCUMENTS

PRESENTATIONS

PRE 88 RELEASES

[All News](#)

CONTACT US

Mary Brooks
Public Information Officer
Info@wekivaparkway.com
407-694-5505

twitter

facebook

WEKIWA PARKWAY

Completing Central Florida's Beltway



Thank You!

Questions?

