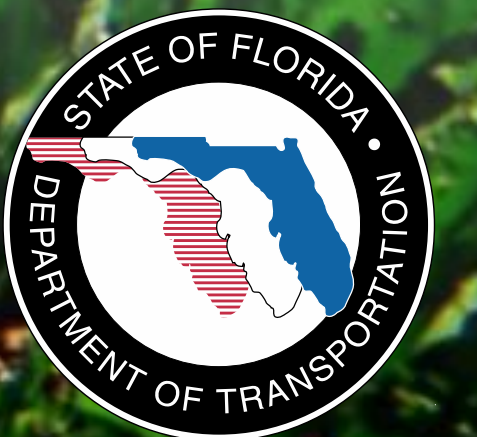




A Regional Transportation Solution

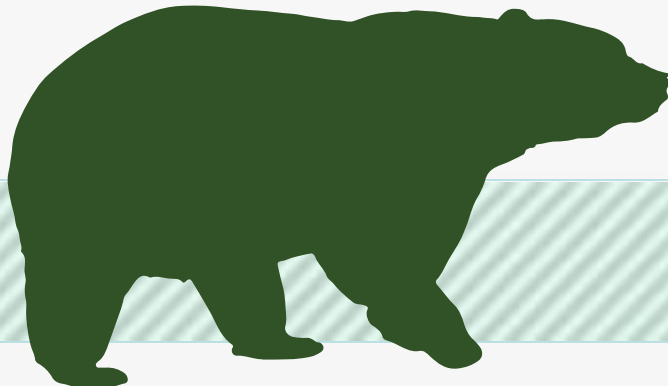
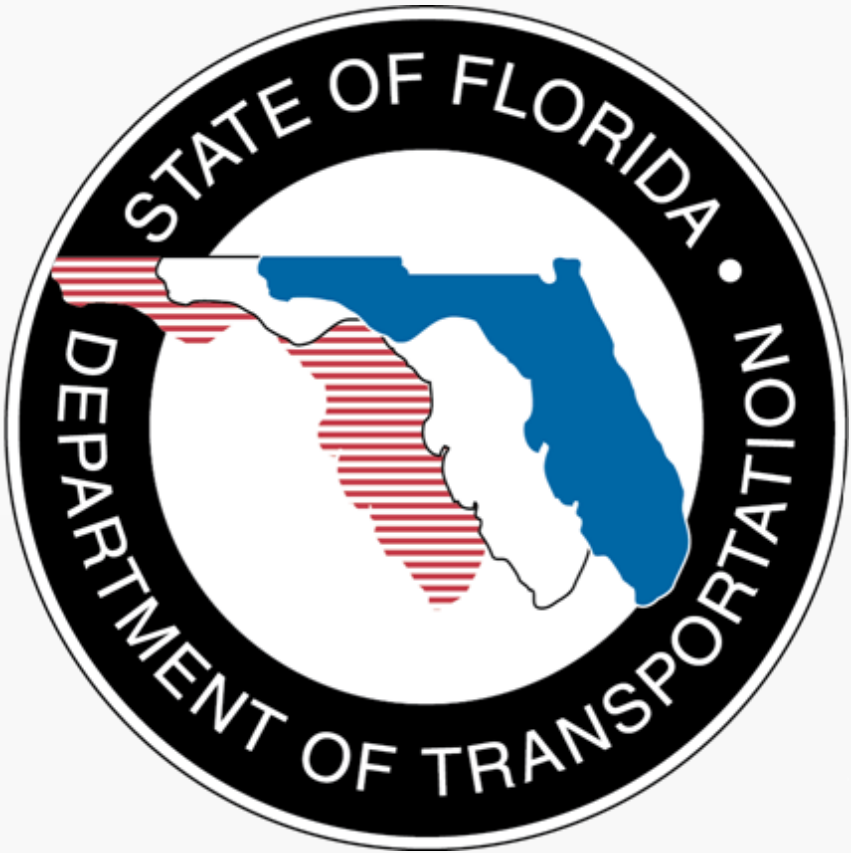
Sanford Rotary Club
Dec. 18, 2013



CENTRAL FLORIDA LEGACY PROJECTS



Funding Partners



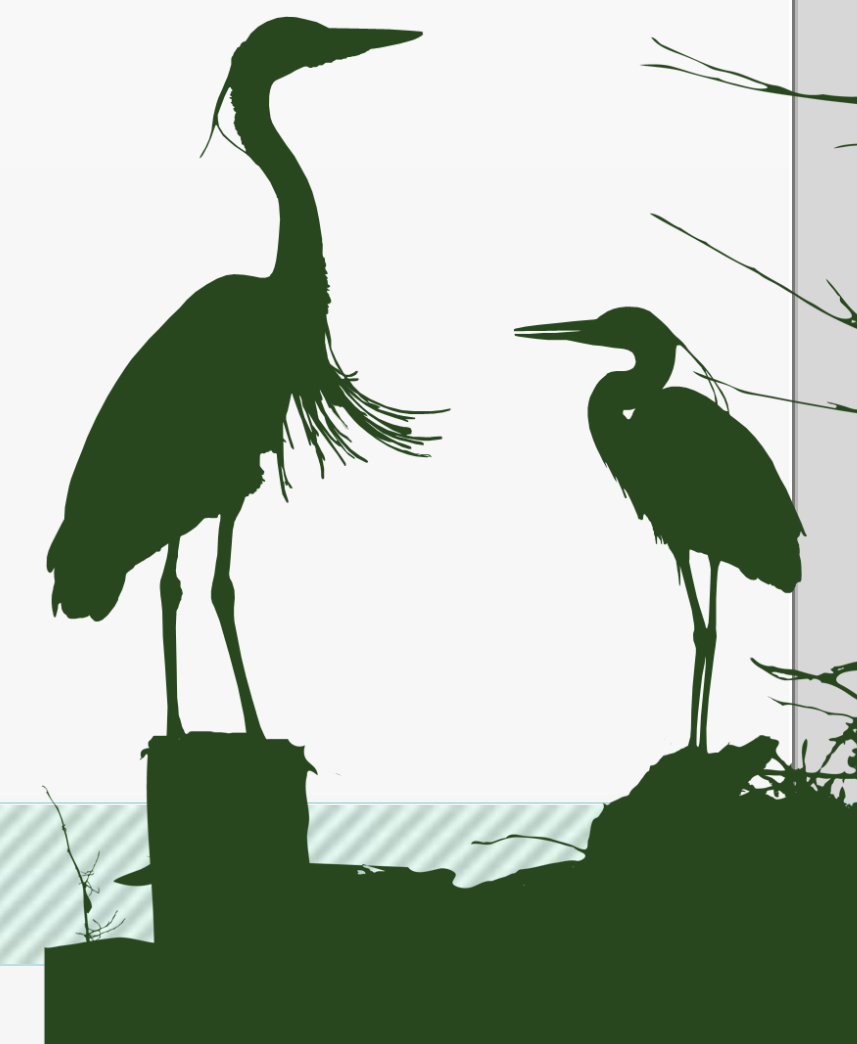
WEKIVA PARKWAY



WEKIVA PARKWAY

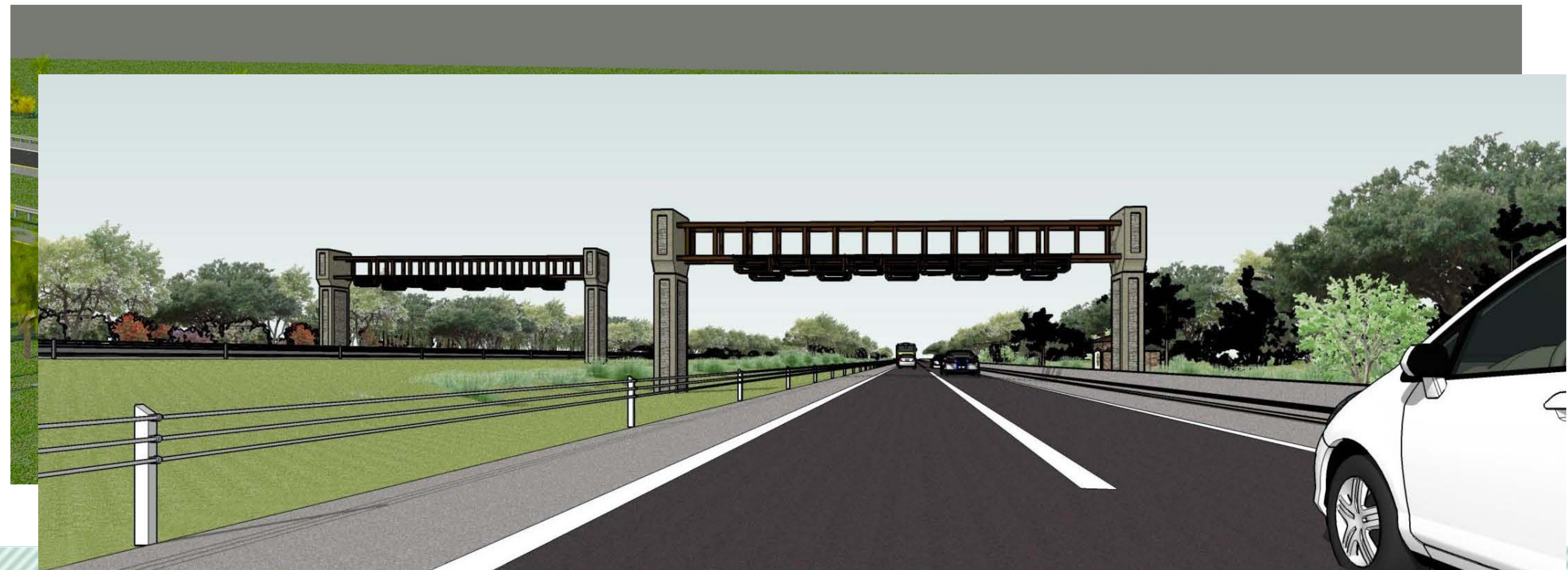
Project Description

- **\$1.6 Billion Completion of Central Florida's Beltway**
- **25-mile Toll Road**
- **Non-Toll Road Improvements:**
 - **Widening SR 46 in Lake & Seminole Counties**
 - **Rebuilding the US 441/SR 46 Interchange in Mount Dora**
 - **Relocating CR 46A to Improve Wildlife Connectivity**
 - **Parallel Service Roads in East Lake & Seminole Counties**
- **Multi-use Trail (Portions of East Lake & Seminole Counties)**



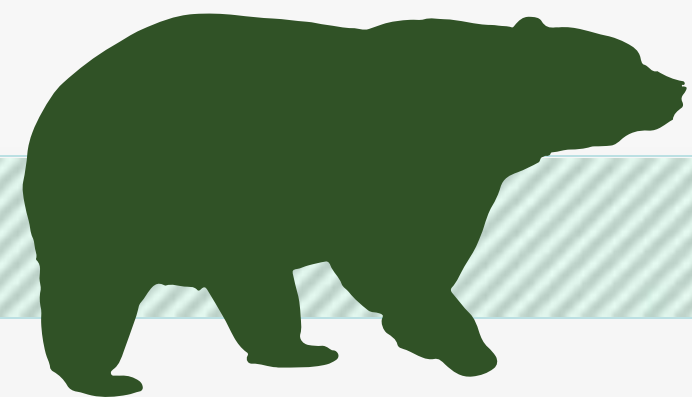
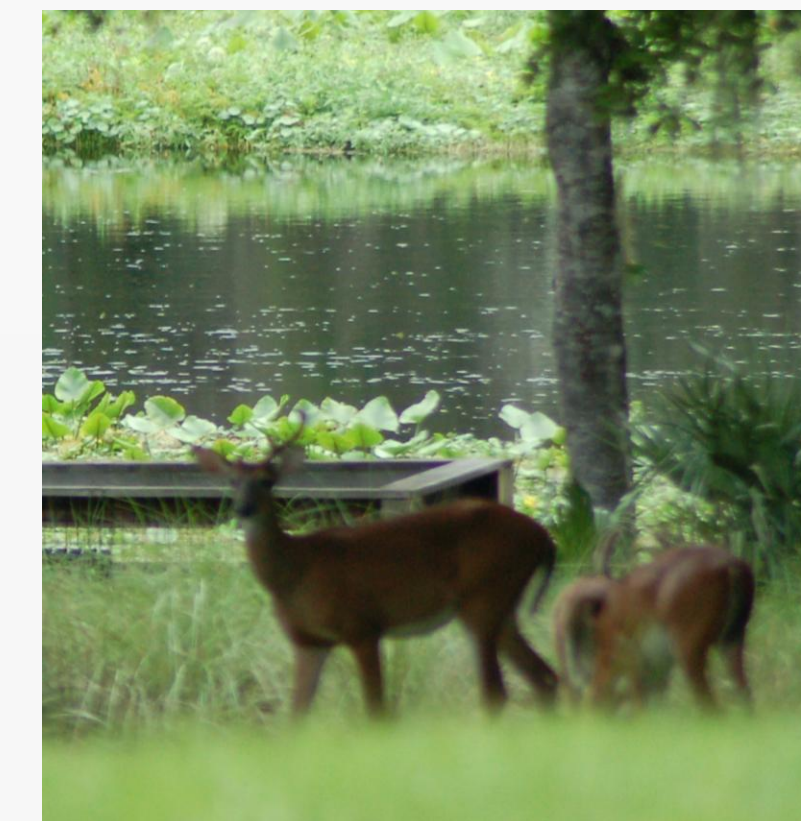
All Electronic Tolling (AET)

- **First in Central Florida**
- **No Toll Plazas (SUNPass or E-Pass)**
- **Improved Traffic Flow Efficiency**
- **Enhanced Safety**
- **Reduced Noise**
- **Toll Costs Pending**



Protecting Nature

- **Wekiva River: Outstanding Florida Water & National Wild & Scenic River**
- **Authorized by the 2004 Wekiva Parkway and Protection Act**
 - **Setting Aside More than 3,400 Acres for Conservation**
 - **Largely Elevated to Reduce Accidents Between Vehicles & Wildlife**
 - **Several Wildlife Bridges**
 - **Few Interchanges (Reduce Development)**



PROJECT ECONOMIC IMPACT

At an estimated cost of \$1.6 Billion for Engineering & Construction, the Wekiva Parkway is Projected to Provide:

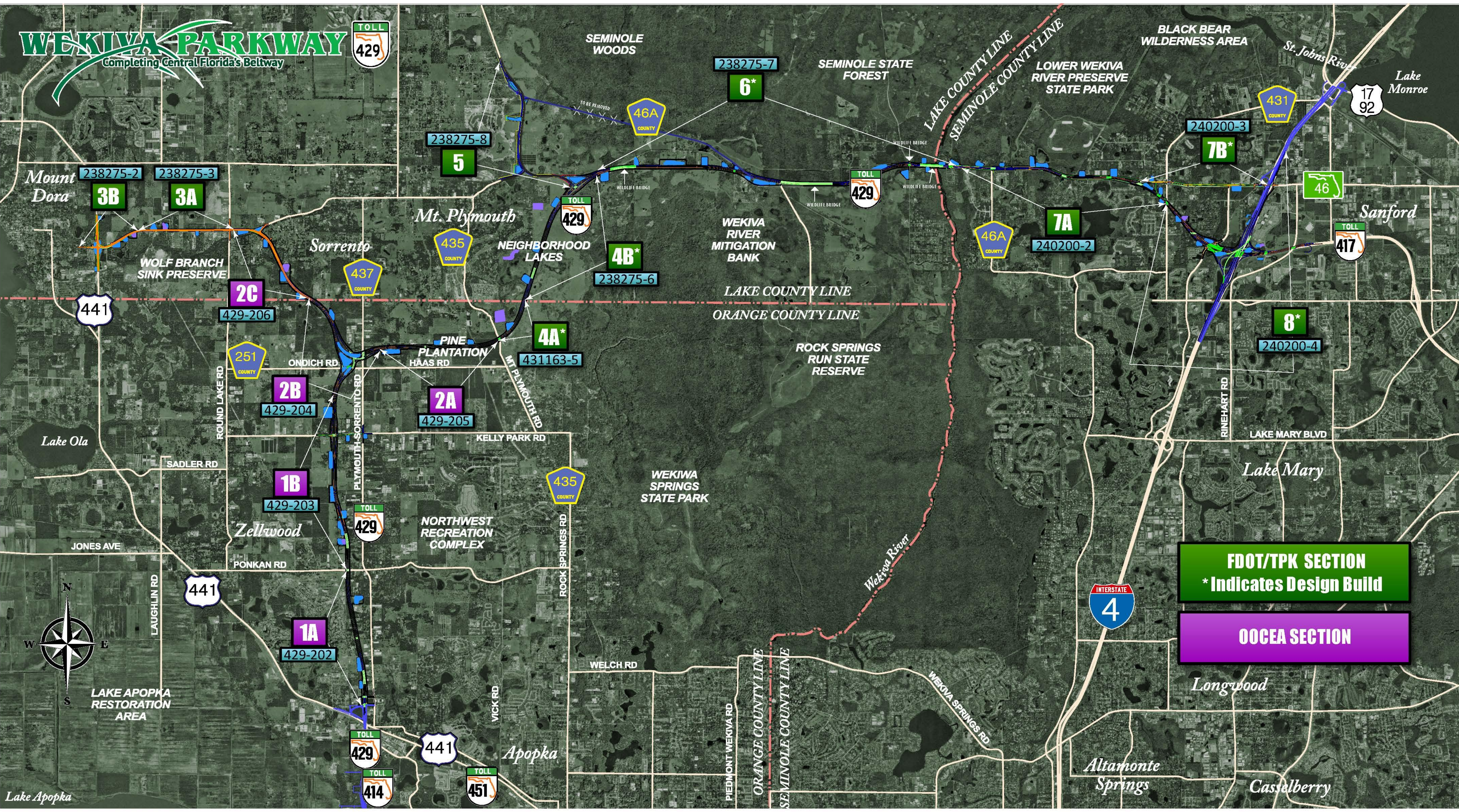
Construction Related Jobs	12,272
Supporting Industries Jobs	5,570
Induced Employment Jobs	17,983

***Estimated Total Jobs 35,825**

*Job Multiplier Source: Federal Highway Administration (FHWA) Employment Impacts of Highway Infrastructure Investment; Updated March 2010

WEKIWA PARKWAY

Completing Central Florida's Beltway



FDOT/TPK SECTION
* Indicates Design Build

OOCEA SECTION

Expressway Authority Sections



Pier Option

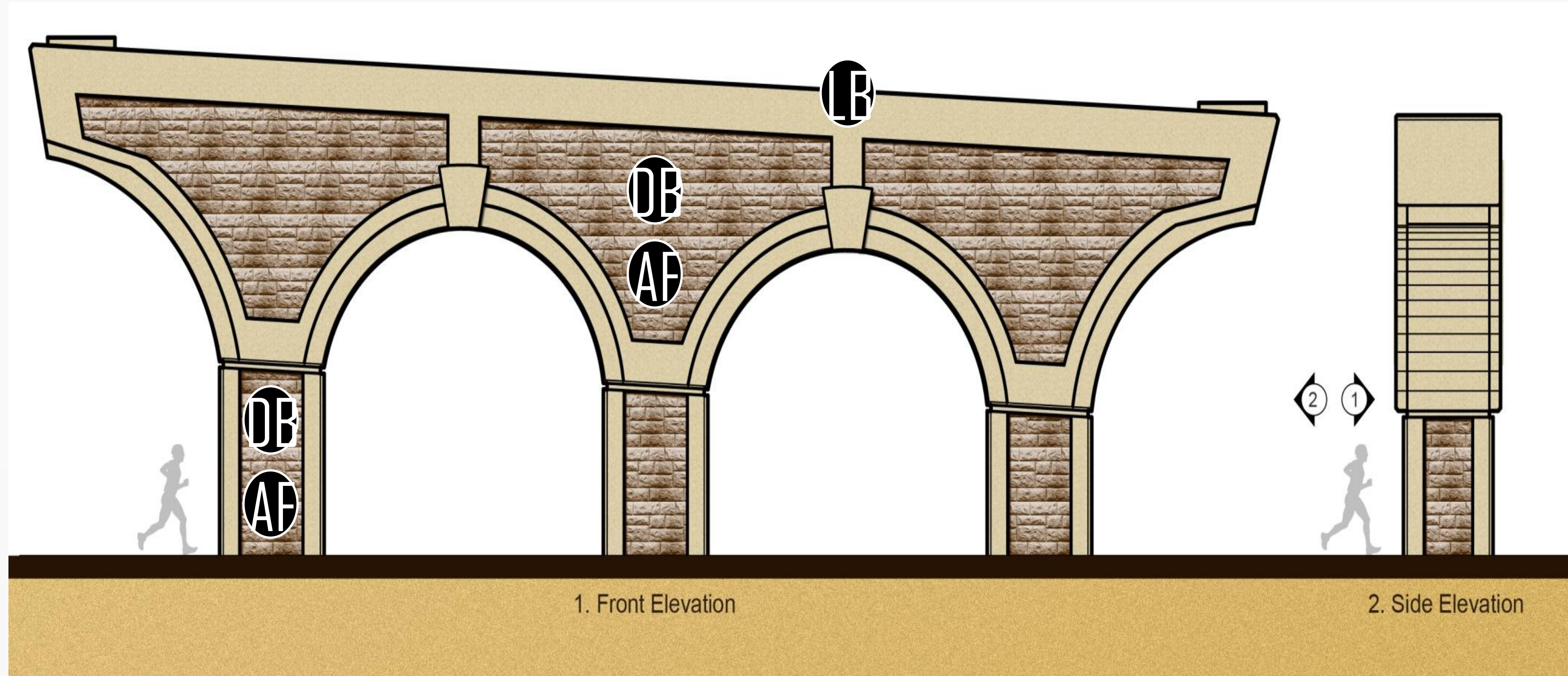
Standard Colors



Light Brown
Dark Green



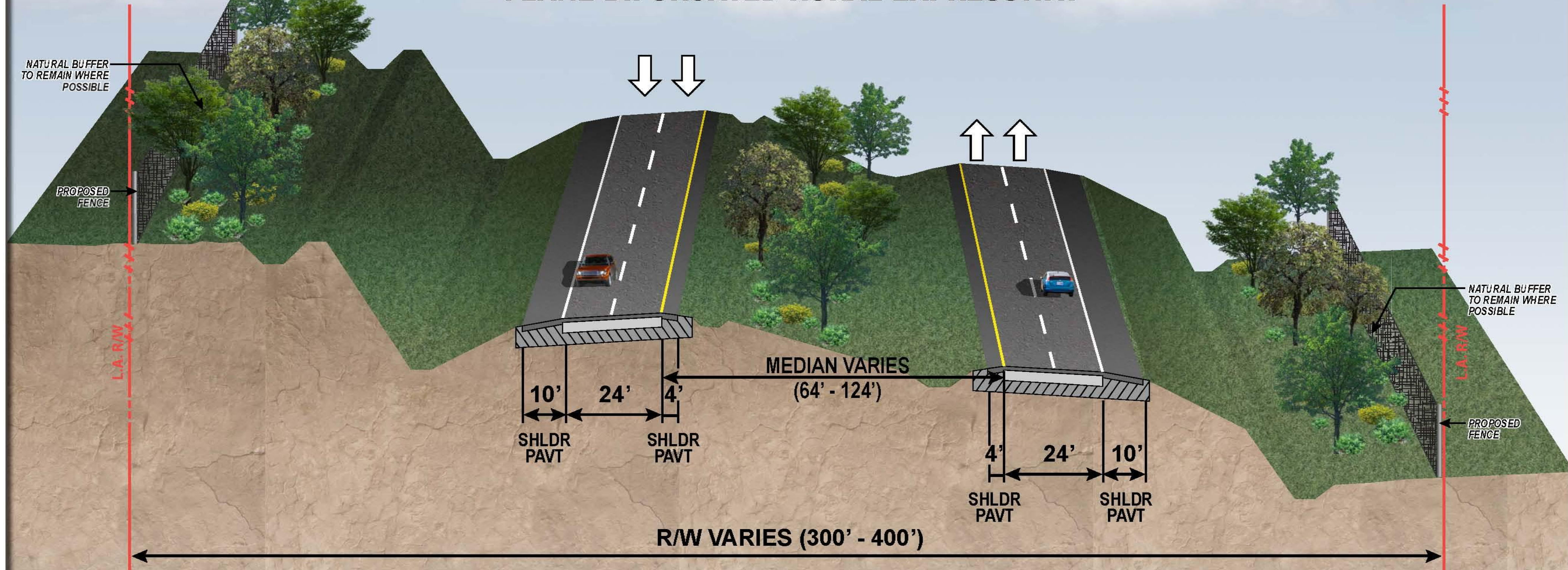
Dark Brown
Ashlar Formline



WEKIVA PARKWAY

TYPICAL SECTION

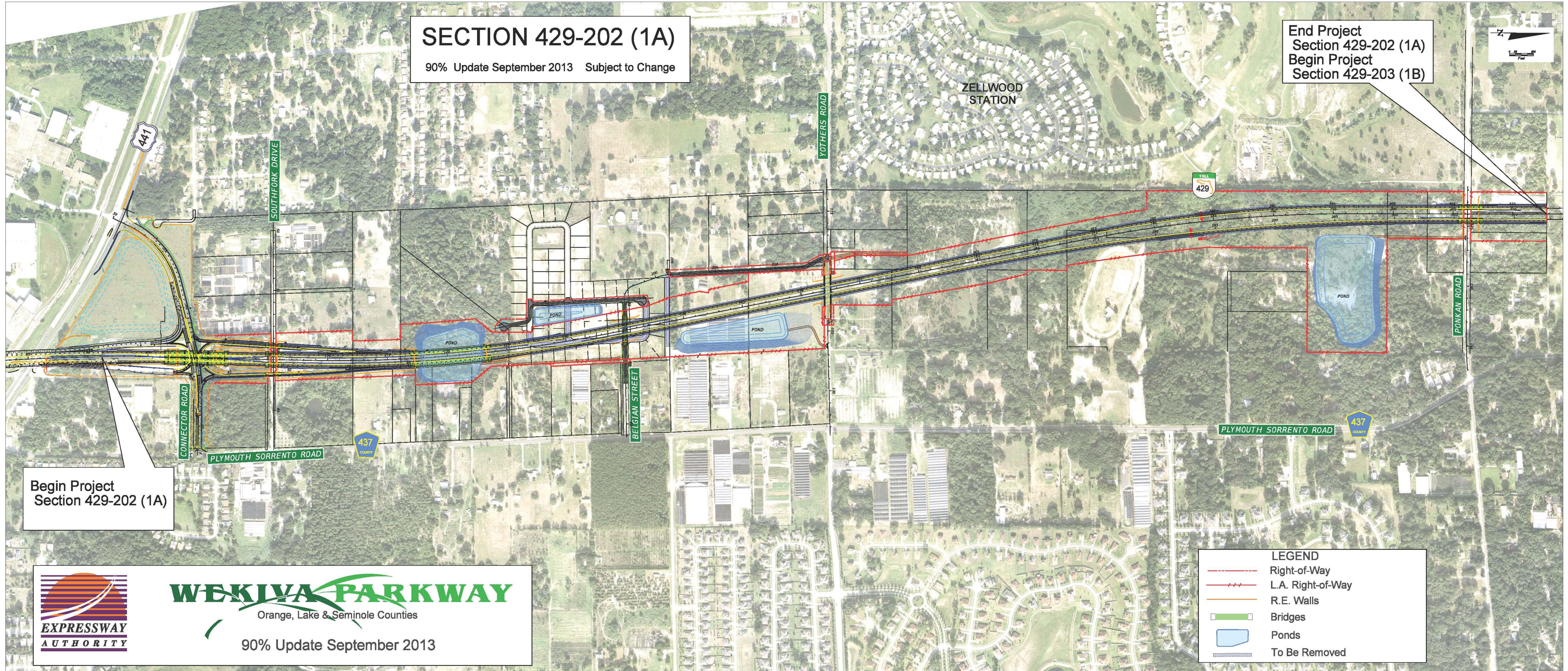
SR 429 (WEKIVA PARKWAY) 4-LANE BIFURCATED RURAL EXPRESSWAY



NOTE: PRELIMINARY, SUBJECT TO CHANGE



Section 1A



SECTION 429-202 (1A)
 90% Update September 2013 Subject to Change

End Project
 Section 429-202 (1A)
 Begin Project
 Section 429-203 (1B)

Begin Project
 Section 429-202 (1A)



WEKIVA PARKWAY
 Orange, Lake & Seminole Counties
 90% Update September 2013

LEGEND	
	Right-of-Way
	L.A. Right-of-Way
	R.E. Walls
	Bridges
	Ponds
	To Be Removed

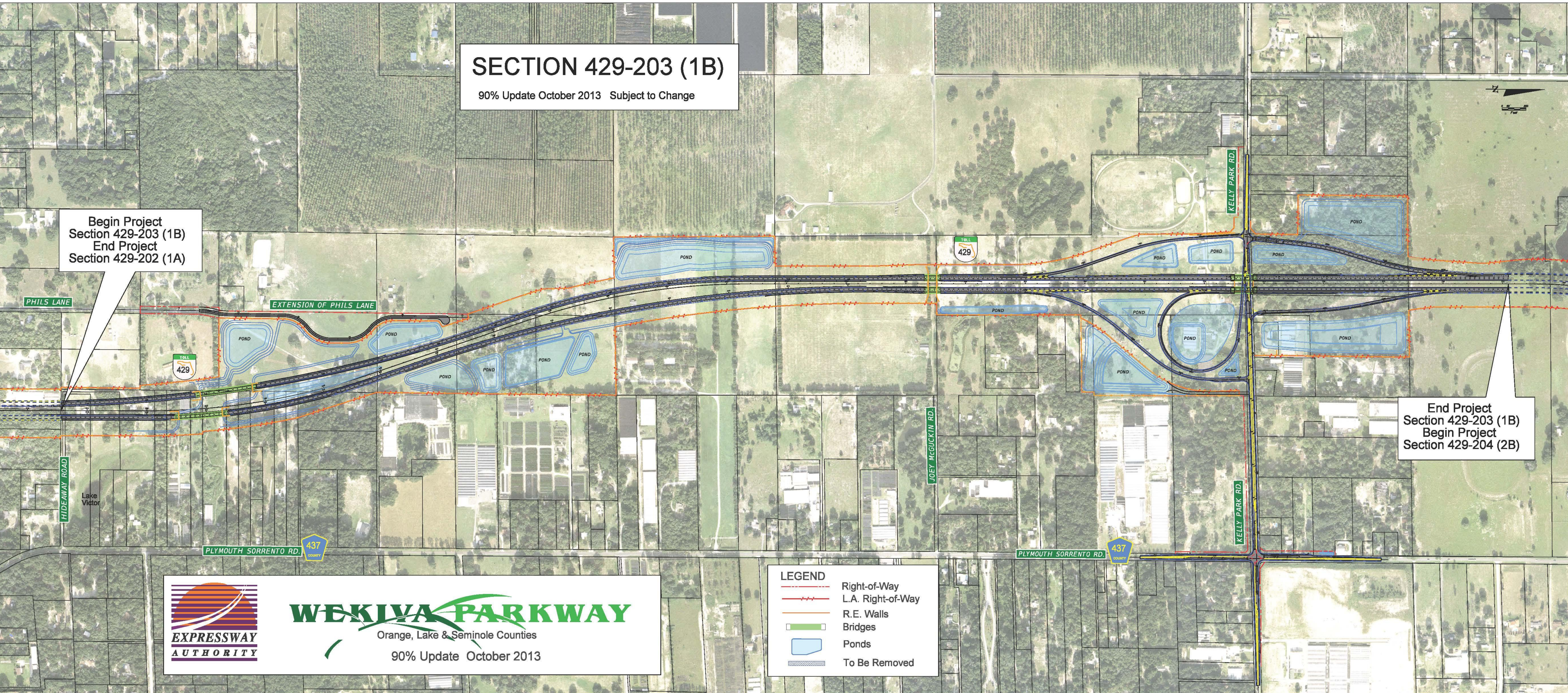
Section 1B

SECTION 429-203 (1B)

90% Update October 2013 Subject to Change

Begin Project
Section 429-203 (1B)
End Project
Section 429-202 (1A)

End Project
Section 429-203 (1B)
Begin Project
Section 429-204 (2B)



WEKIWA PARKWAY
Orange, Lake & Seminole Counties
90% Update October 2013

LEGEND	
	Right-of-Way
	L.A. Right-of-Way
	R.E. Walls
	Bridges
	Ponds
	To Be Removed



WEKIVA PARKWAY

Orange, Lake & Seminole Counties

Updated July 2013

SECTION 429-205 (2A)

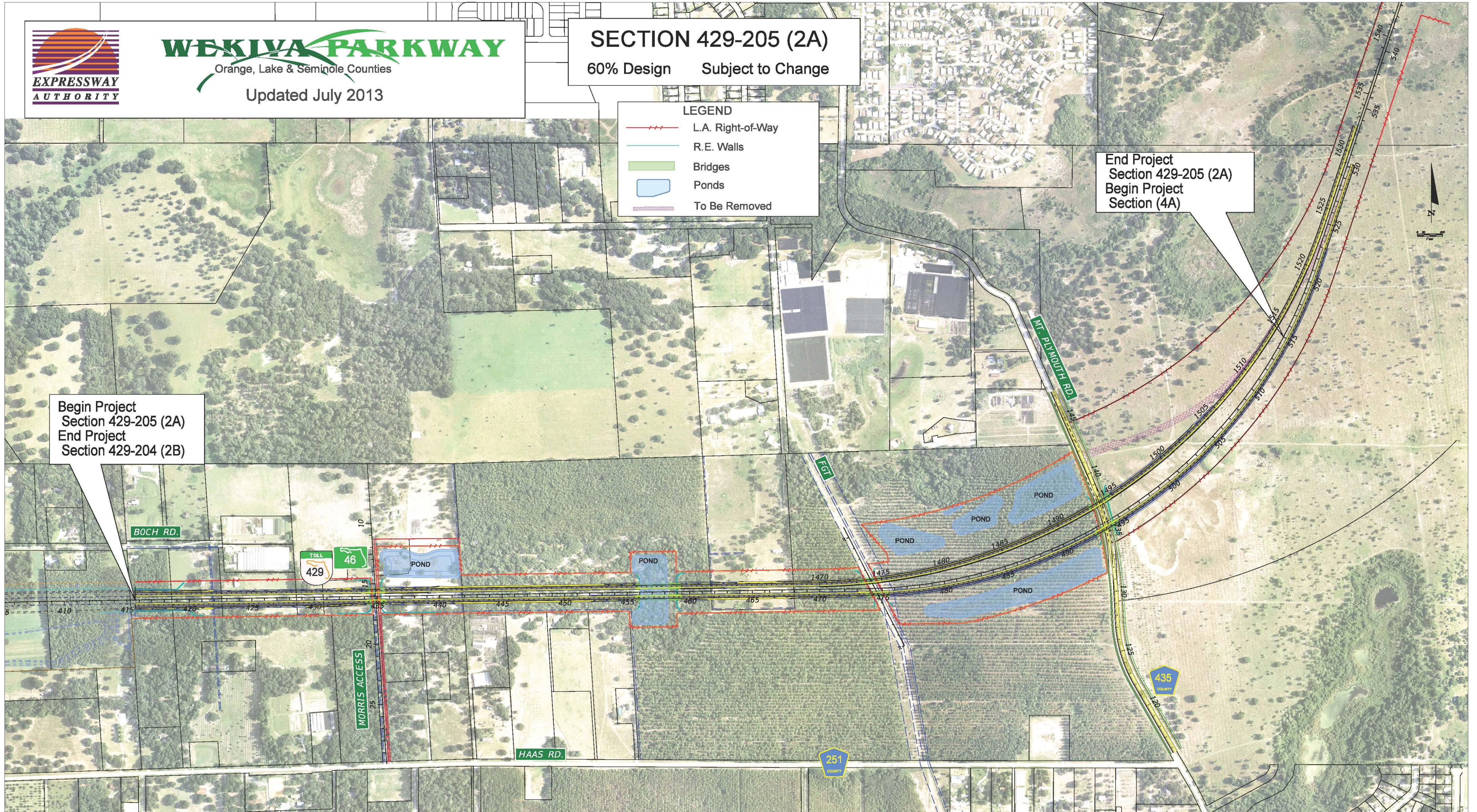
60% Design Subject to Change

LEGEND

- L.A. Right-of-Way
- R.E. Walls
- Bridges
- Ponds
- To Be Removed

End Project
Section 429-205 (2A)
Begin Project
Section (4A)

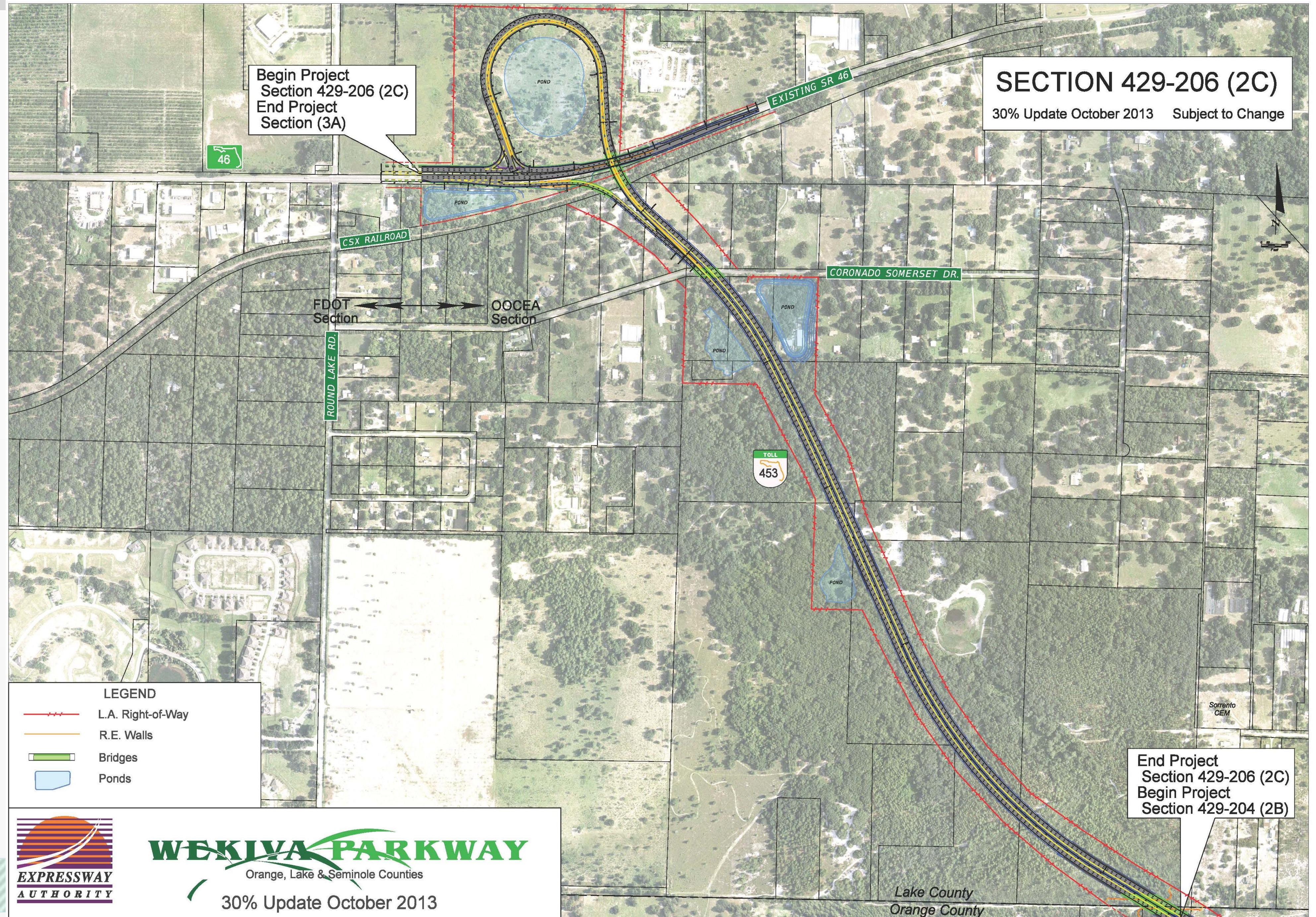
Begin Project
Section 429-205 (2A)
End Project
Section 429-204 (2B)



Section 2C

SECTION 429-206 (2C)

30% Update October 2013 Subject to Change



Begin Project
Section 429-206 (2C)
End Project
Section (3A)

End Project
Section 429-206 (2C)
Begin Project
Section 429-204 (2B)

LEGEND

- L.A. Right-of-Way
- R.E. Walls
- Bridges
- Ponds

WEKIIVA PARKWAY
Orange, Lake & Seminole Counties
30% Update October 2013

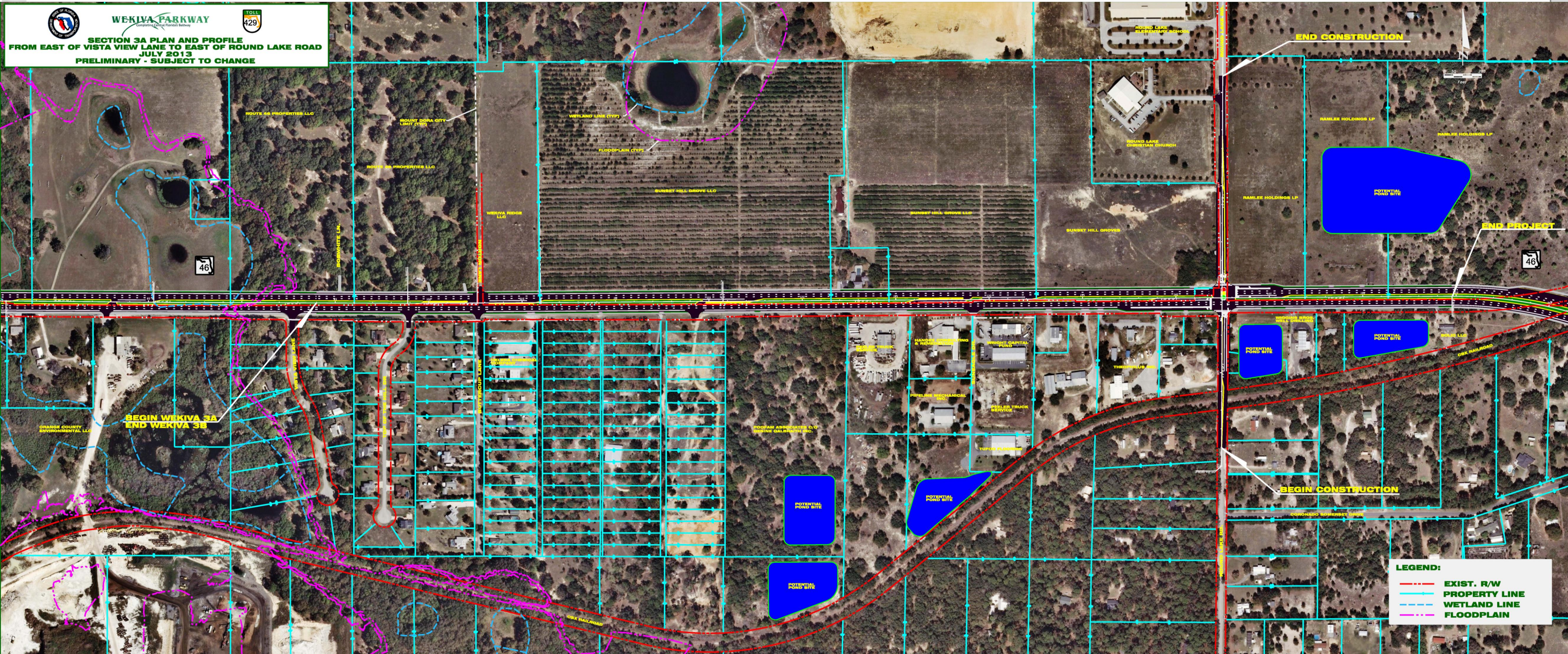
**EXPRESSWAY
AUTHORITY**

Lake County
Orange County

FDOT Sections



Section 3A



Section 3B



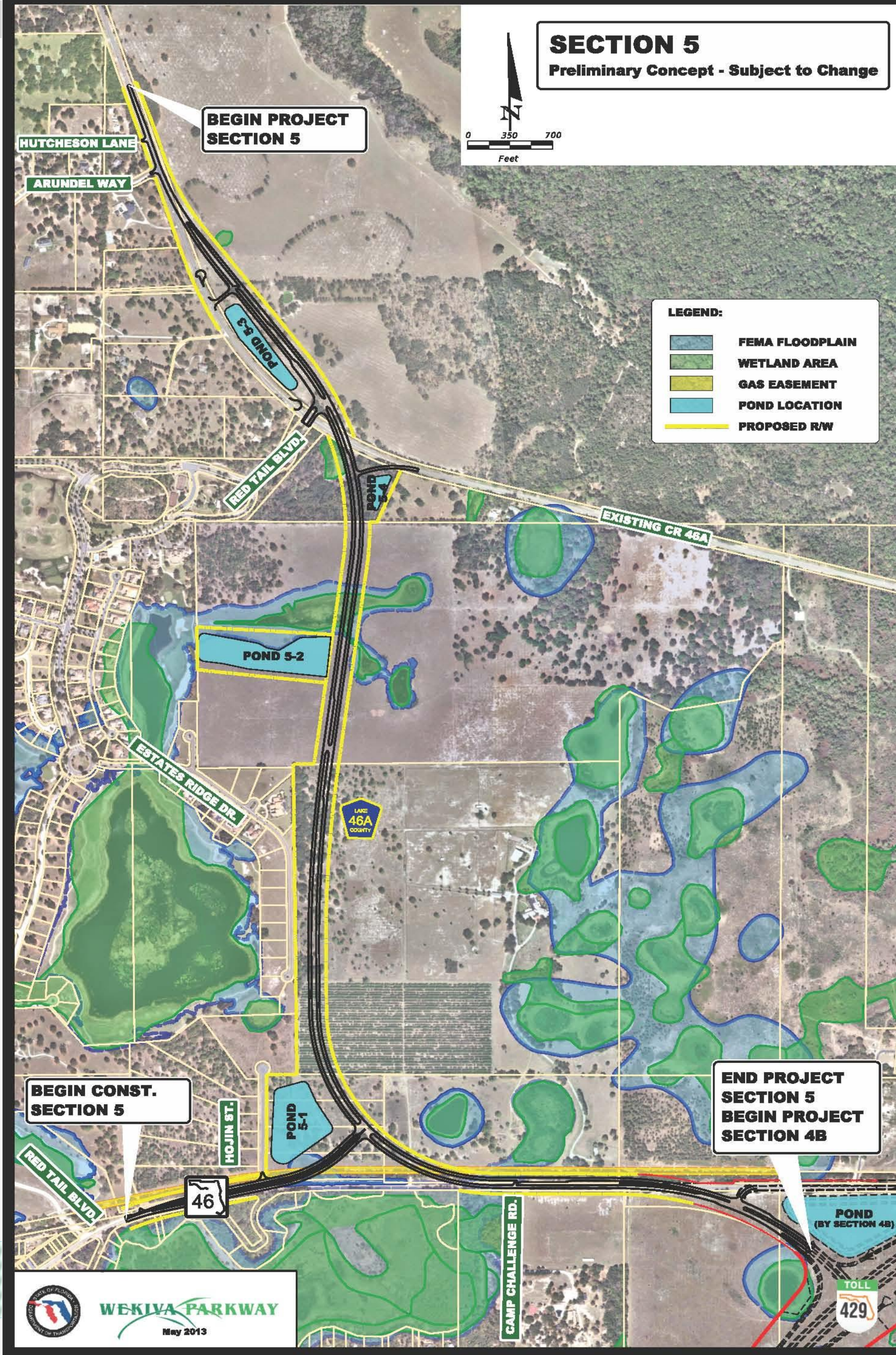
Section 4A & 4B



Section 4A & 4B



Section 5



Section 6



SECTION 238275-7 (6)

Preliminary Concept Subject to Change

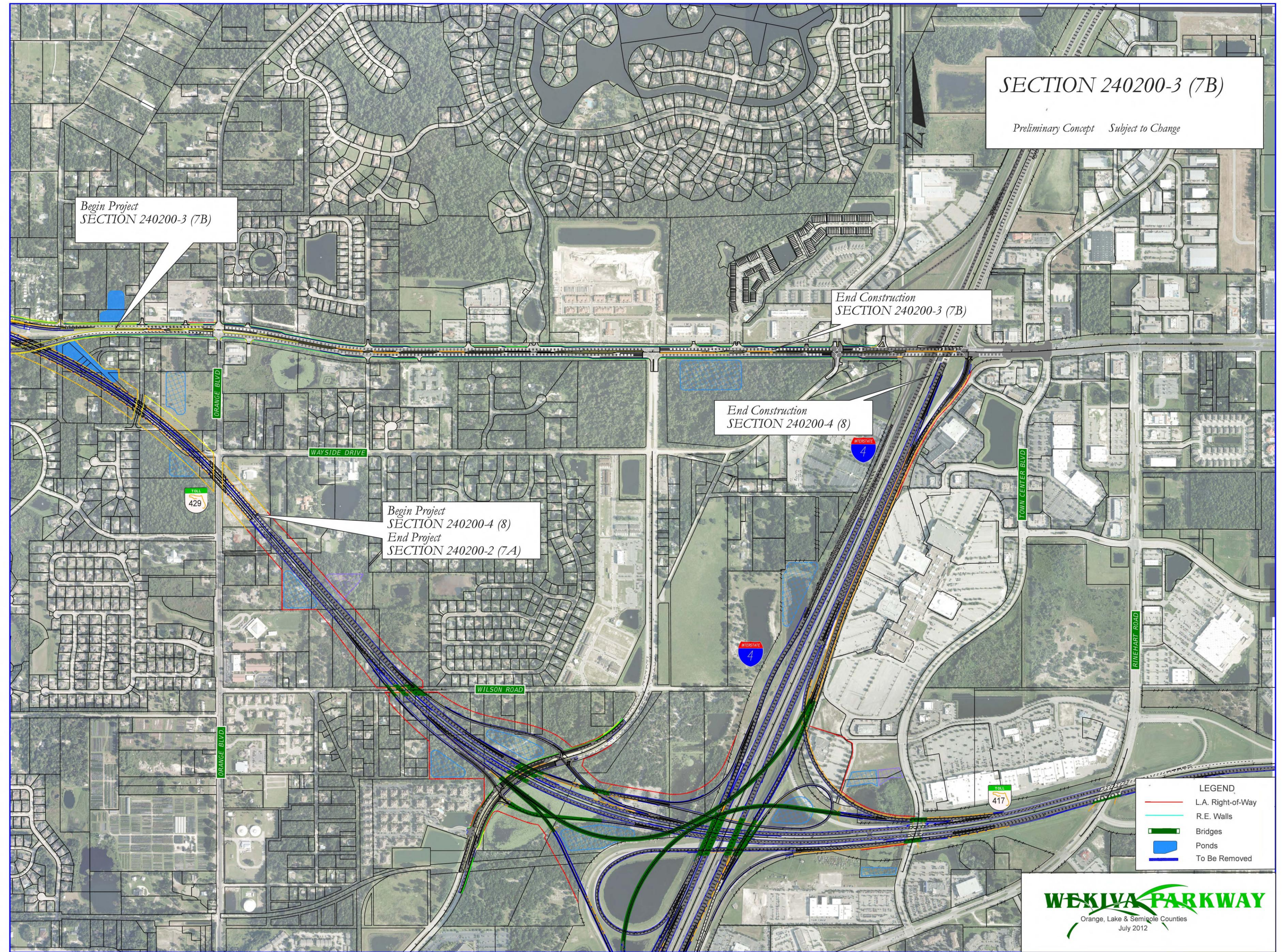
Begin Project
SECTION 238275-7 (6)
End Project
SECTION 238275-6 (4B)

Begin Project
SECTION 238275-7 (6)
End Project
SECTION 240200-2 (7A)

- LEGEND
- L.A. Right-of-Way
 - R.E. Walls
 - Bridges
 - Ponds
 - To Be Removed

WEKIVA PARKWAY
Orange, Lake & Seminole Counties
July 2012

Sections 7B & 8





Wekiva Parkway (SR 429) Schedule*



	2012				2013				2014				2015				2016				2017				2018				2019				2020				2021			
	Q1	Q2	Q3	Q4	Q1	Q2	Q3	Q4	Q1	Q2	Q3	Q4	Q1	Q2	Q3	Q4	Q1	Q2	Q3	Q4	Q1	Q2	Q3	Q4	Q1	Q2	Q3	Q4	Q1	Q2	Q3	Q4	Q1	Q2	Q3	Q4				
Section 1A - OOCEA																																								
Final Design																																								
Right of Way																																								
Construction																																								
Section 1B - OOCEA																																								
Final Design																																								
Right of Way																																								
Construction																																								
Section 2B - OOCEA																																								
Final Design																																								
Right of Way																																								
Construction																																								
Section 2A - OOCEA																																								
Final Design																																								
Right of Way																																								
Construction																																								
Section 2C - OOCEA																																								
Final Design																																								
Right of Way																																								
Construction																																								
Section 3A - FDOT																																								
Final Design																																								
Right of Way																																								
Construction																																								
Section 3B - FDOT																																								
Final Design																																								
Right of Way																																								
Construction																																								
Section 4A* & 4B* - FDOT																																								
Design-Build																																								
Section 5 - FDOT																																								
Final Design																																								
Right of Way																																								
Construction																																								
Section 6* - FDOT																																								
Preliminary Design																																								
Right of Way																																								
Design-Build																																								
Section 7A - FDOT																																								
Final Design																																								
Right of Way																																								
Construction																																								
Section 7B* - FDOT																																								
Design-Build																																								
Section 8* - FDOT																																								
Right of Way																																								
Design-Build																																								



Schedule Recap

The Wekiva Parkway will be completed and **open to traffic***
as follows:

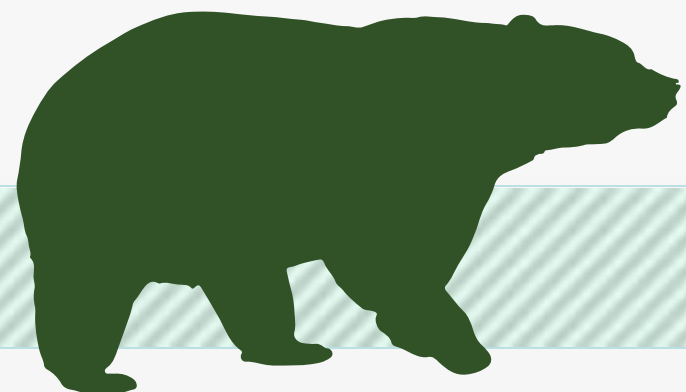
Orlando-Orange County Expressway Authority Sections:

- 1A & 1B – Late 2016
- 2A, 2B & 2C – 2019

Florida Department of Transportation Sections

- 3A, 3B & 5 – 2019
- 4A & 4B – Late 2014 (Under Construction)
- 6 – 2020
- 7A – 2020 - 2021
- 7B & 8 – 2021

*Schedule Subject to Change



What's Next?

- **Final Design Continues**
- **Opportunities for Community Input**
 - ✓ **Public Meetings: Section 5 & 6 – April 2014**
Section 1A & 1B – Summer 2014
 - ✓ **Community Presentations**
 - ✓ **Updates & Comments via Website: www.wekivaparkway.com**
- **First Section (4A & 4B) Open to Traffic – Late 2014**



For More Information:

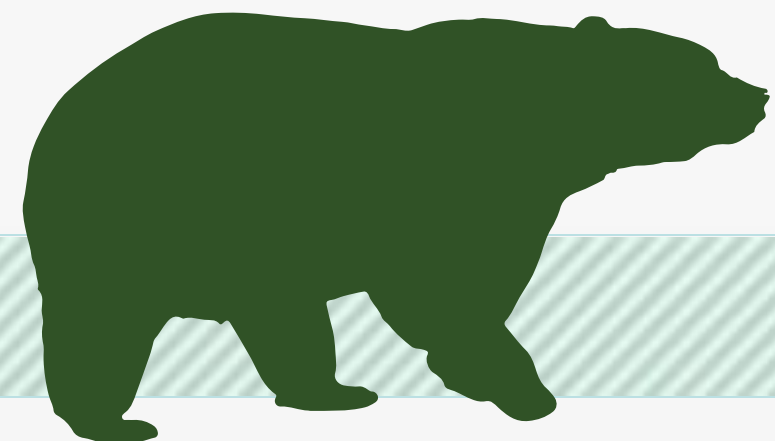
Mary Brooks

Public Involvement Coordinator

C: 407-694-5505

E: Info@wekivaparkway.com

W: www.wekivaparkway.com



The screenshot shows the official website for Wekiva Parkway, titled "Completing Central Florida's Beltway". The page features a navigation menu with links for Home, FDOT Projects, OOCEA Projects, Projects by County, Project History, and Contact Us. A "WELCOME" section provides an overview of the project, stating it is a cooperative effort between the Florida Department of Transportation and the Orlando-Orange County Expressway Authority. It details the project's goal to connect SR 429 to SR 417, with an estimated cost of \$1.5 billion. Key project components include building seven miles of four- and six-lane road, rebuilding the US 441/SR 46 interchange, and relocating the CR 46A connection. A "WELKIVA PARKWAY PROJECT SECTION MAP" is displayed, showing various project sections (e.g., 1A, 2A, 3A, 4A, 5A, 6A, 7A, 8A, 9A, 10A, 11A, 12A, 13A, 14A, 15A, 16A, 17A, 18A, 19A, 20A) along the route. A legend indicates that green boxes represent "FDOT/TPK SECTION" and purple boxes represent "OOCEA SECTION". The right sidebar contains a "LATEST NEWS" section with several recent updates, including "August 2013 OOCEA Reaches 60% Design Plans on Section 2A" and "July 2013 FDOT Kicks Off Design for Section 7A". A "PUBLIC MEETING" section is also present, listing upcoming events. The bottom of the page includes social media links for Twitter and Facebook.



WEKIWA PARKWAY

Completing Central Florida's Beltway



Thank You!
Questions?

