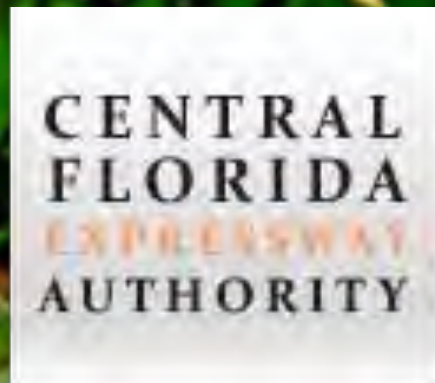




A Regional Transportation Solution

**Section 7A Design Update
Public Workshop
Feb. 17, 2015**





Florida Department of Transportation

This meeting and project are being conducted without regard to race, color, national origin, age, sex, religion, disability or family status. Persons wishing to express their concerns relative to FDOT compliance with Title VI may do so by contacting:

Jennifer Smith
FDOT District Five Title VI Coordinator
719 South Woodland Boulevard
Deland, Florida 32720
386-943-5367
Jennifer.smith2@dot.state.fl.us

Jacqueline Paramore
State Title VI Coordinator
605 Suwannee Street, Mail Station 65
Tallahassee, FL 32399-0450
850-414-4753
Jacqueline.paramore@dot.state.fl.us

All inquiries or complaints will be handled according to FDOT procedure and in a prompt and courteous manner.



WEKIVA PARKWAY

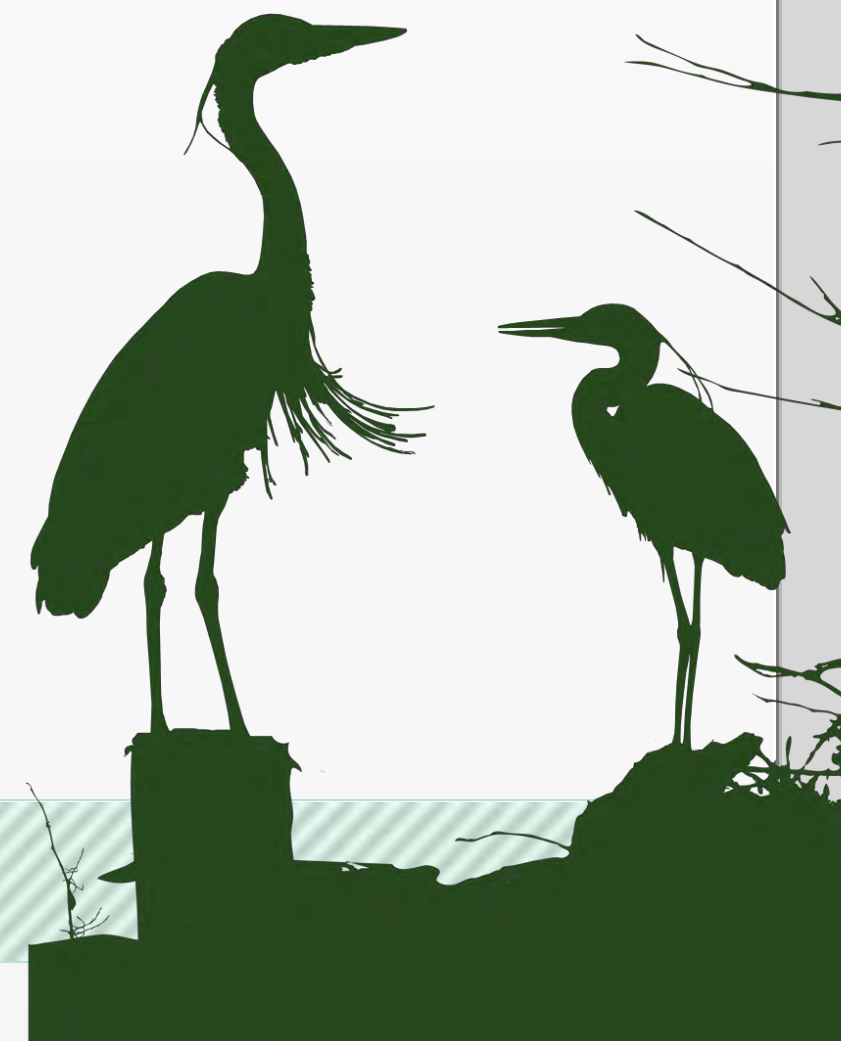


WEKIVA PARKWAY

Project Description

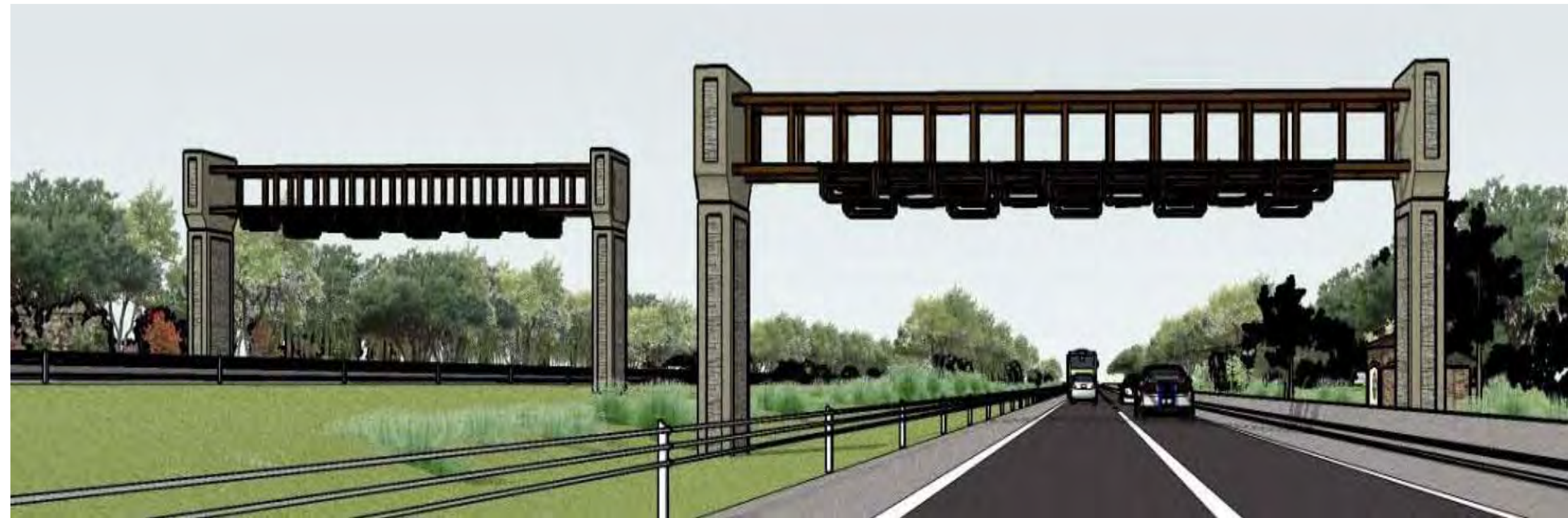
- **\$1.6 Billion Completion of Central Florida's Beltway**
- **25-mile Toll Road**
- **Non-Toll Road Improvements:**
 - **Widening SR 46 in Lake & Seminole Counties**
 - **Rebuilding the US 441/SR 46 Interchange in Mount Dora**
 - **Relocating CR 46A to Improve Wildlife Connectivity**
 - **Parallel Service Roads in East Lake & Seminole Counties**
- **Multi-use Trail (10 miles)**

WEKIYA PARKWAY



All Electronic Tolling (AET)

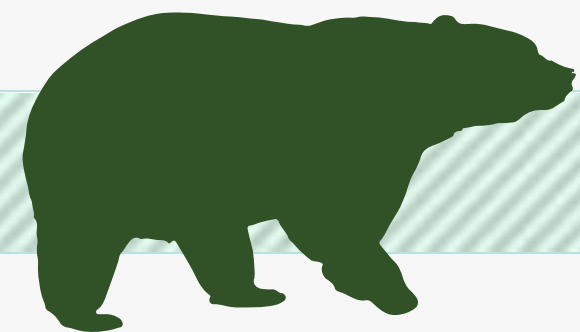
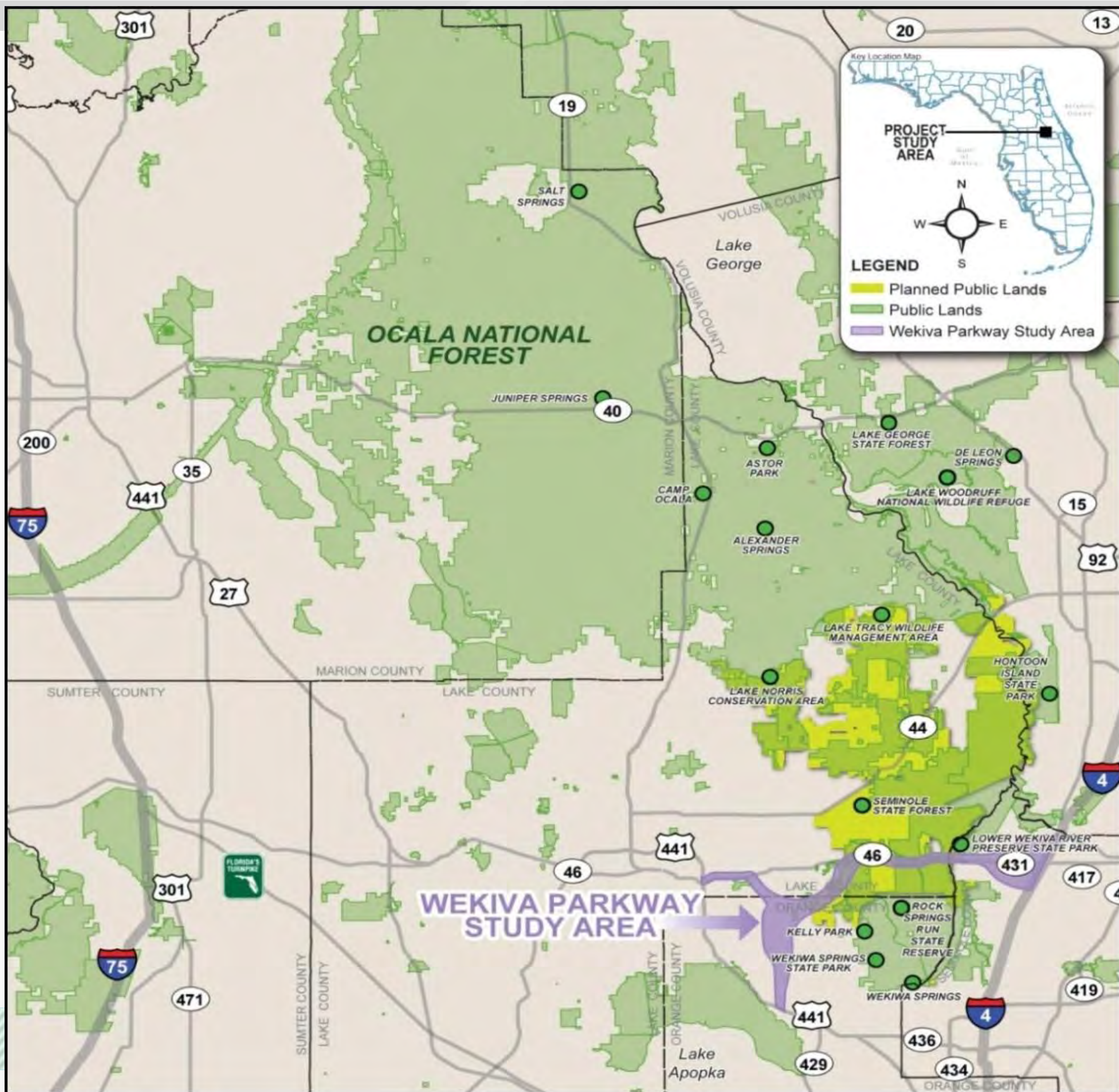
- First in Central Florida
- No Toll Plazas – No Cash
- Enhances Safety
- Maximizes Convenience
- Reduces Noise & Pollution
- Improves Mobility
- Saves Money
- AET Info on Website



Protecting Nature

- **Wekiva River: Outstanding Florida Water & National Wild & Scenic River**
- **Authorized by the 2004 Wekiva Parkway and Protection Act**
 - **Setting Aside More than 3,400 Acres for Conservation**
 - **Largely Elevated to Reduce Accidents Between Vehicles & Wildlife**
 - **Several Wildlife Bridges**
 - **Few Interchanges (Reduce Development)**





WEKIVA PARKWAY

Wekiva Parkway Trail

10 Miles

Concurrent: Sections 5, 6 & 7A

✓ **2017-2021**

Separate: Sections 4A & 4B

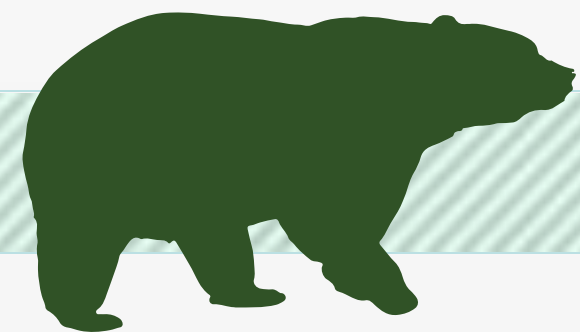
✓ **2017-2021**

Connections:

✓ **West Orange Trail Extension**

✓ **Lake-Wekiva Trail (Planned)**

✓ **Seminole-Wekiva Trail Extension**



PROJECT ECONOMIC IMPACT

At an estimated cost of \$1.6 Billion for Engineering & Construction, the Wekiva Parkway is Projected to Provide:

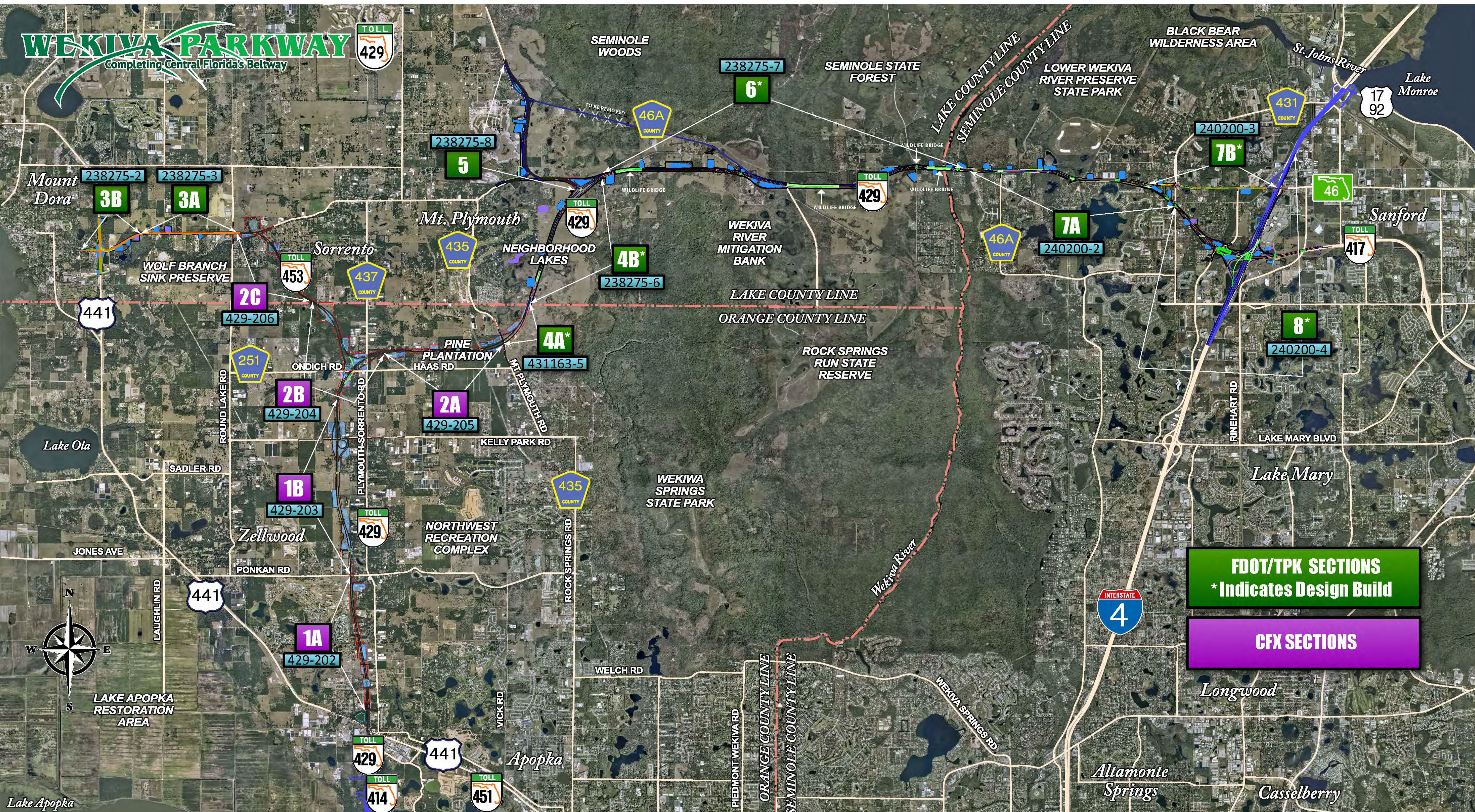
Construction Related Jobs	12,272
Supporting Industries Jobs	5,570
Induced Employment Jobs	17,983

***Estimated Total Jobs 35,825**

*Job Multiplier Source: Federal Highway Administration (FHWA) Employment Impacts of Highway Infrastructure Investment; Updated March 2010

WEKIVA PARKWAY

Completing Central Florida's Beltway



FDOT/TPK SECTIONS
* Indicates Design Build

CFX SECTIONS



Section 7A Design Update



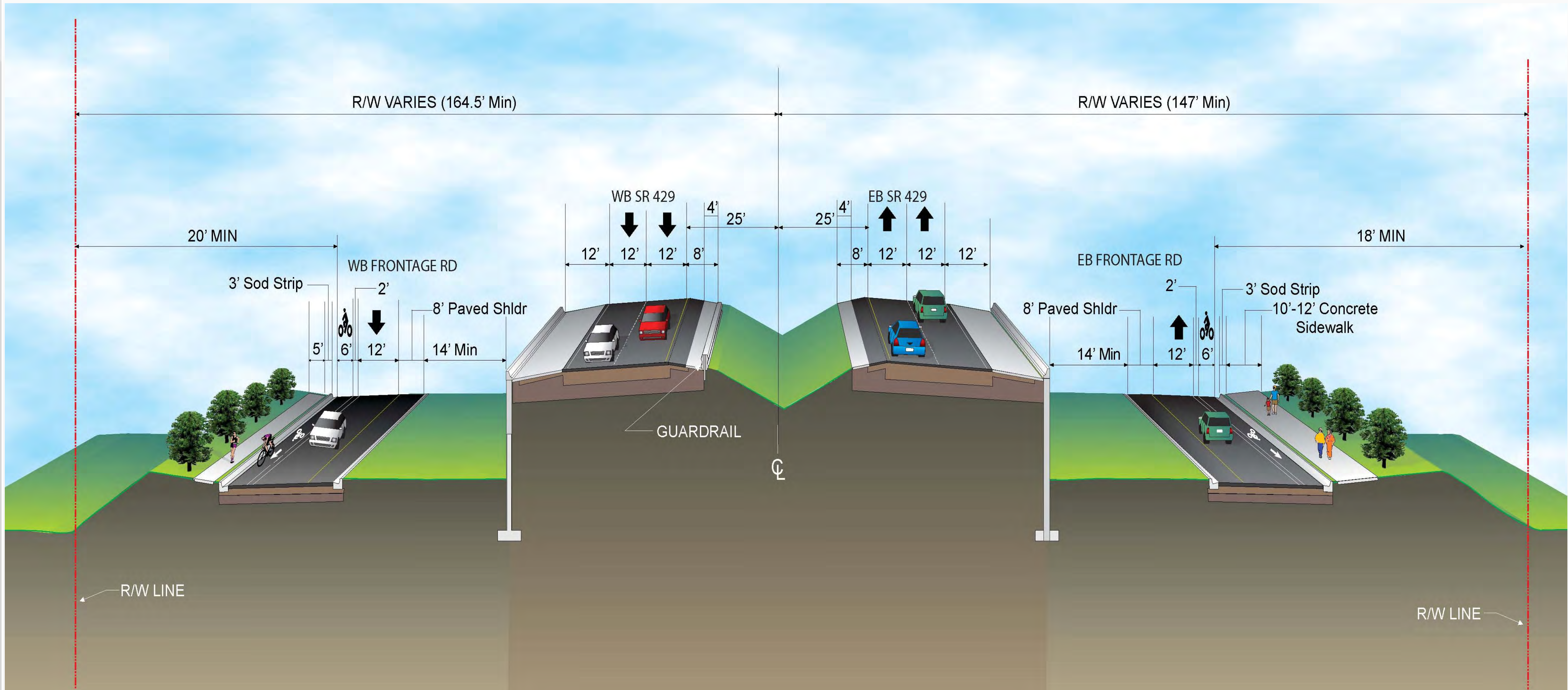
Section 7A - West



Section 7A - East



Section 7A – Typical Section

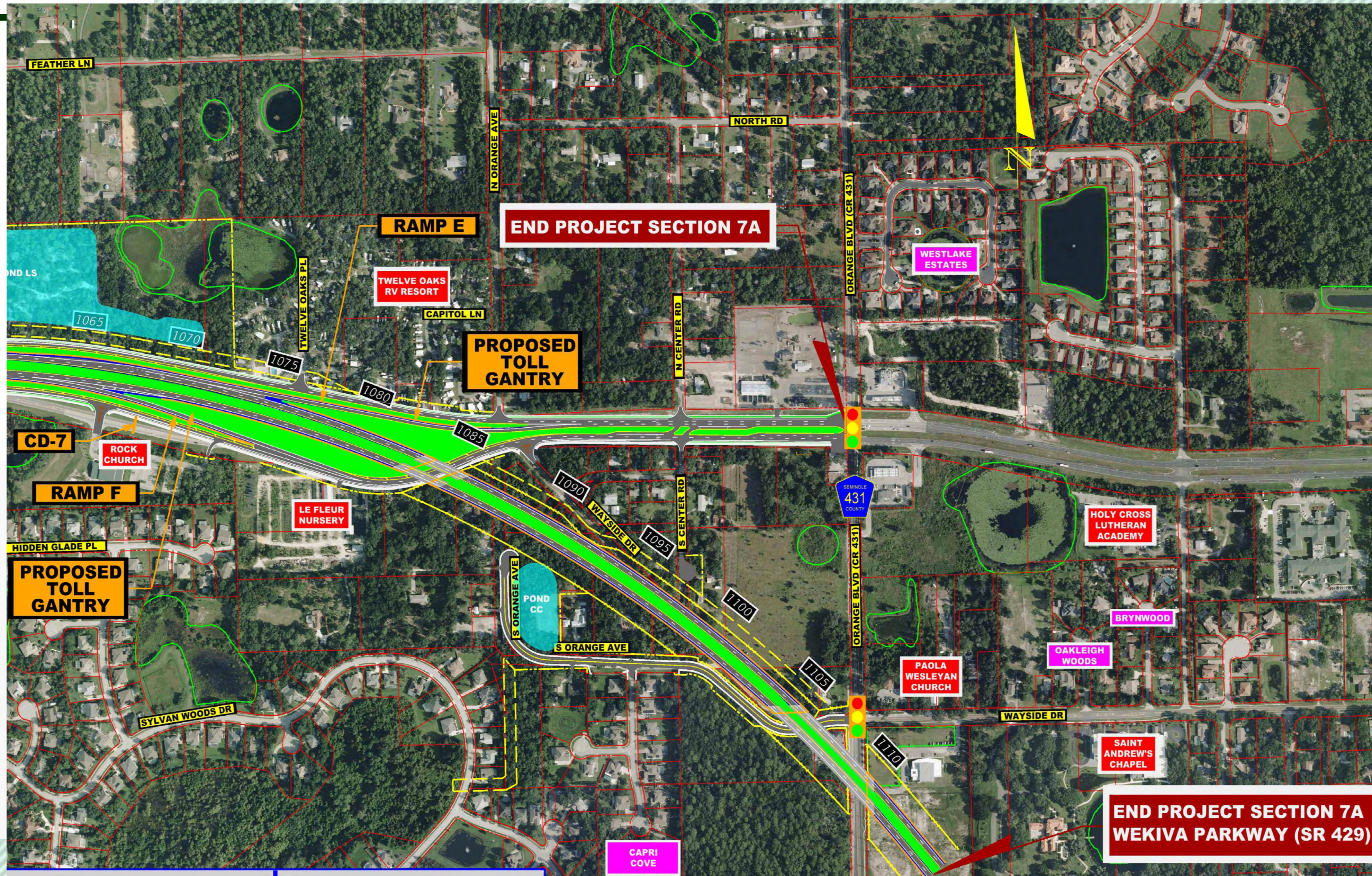


Section 7A – Roundabout Concept



Lighting is planned at roundabout approaches & under bridges. No lighting on the parkway mainline.

Section 7A – Capri Cove Access Orange Ave. Extension



Section 7A Cost & Schedule

PROJECT PHASE	COST	SCHEDULE
Design	\$ 7 Million	2013 – 2015
Right-Of-Way Acquisition	\$ 70 Million	2015 – 2017
Procurement		2017
Construction:	\$129 Million	2017 - 2020
TOTAL	\$206 Million	



WEKIVA PARKWAY

Completing Central Florida's Beltway

2020

2019-20

2020-21

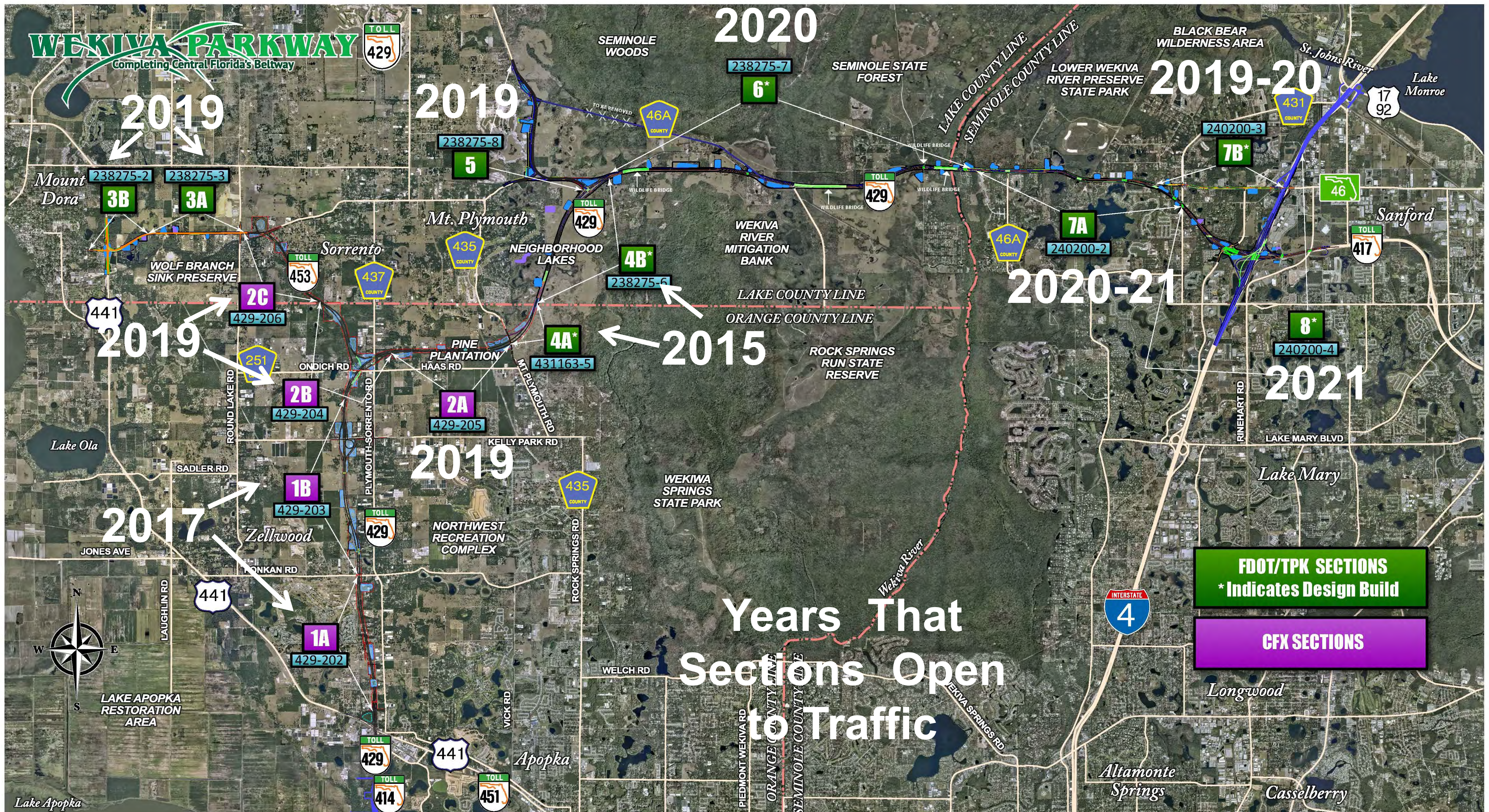
2021

2015

Years That Sections Open to Traffic

FDOT/TPK SECTIONS
* Indicates Design Build

CFX SECTIONS



For More Information:

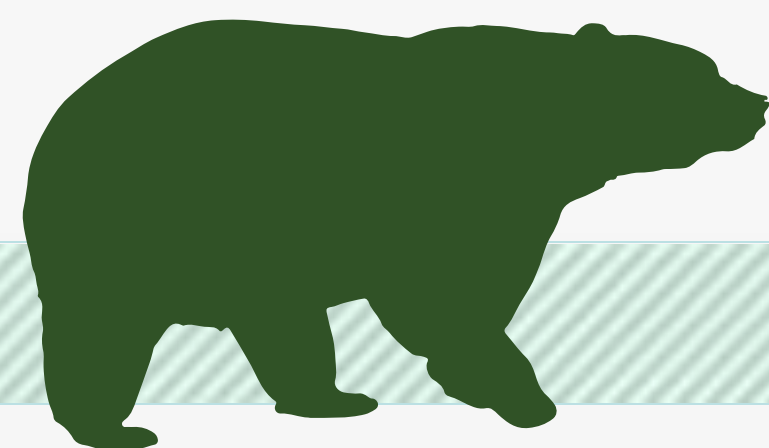
Mary Brooks

Public Information Officer

C: 407-694-5505

E: Info@wekivaparkway.com

W: www.wekivaparkway.com




WEKIVA PARKWAY
Completing Central Florida's Parkway

HOME | FDOT SECTIONS | OFX SECTIONS | SECTIONS BY COUNTY | PROJECT HISTORY | FAQ | CONTACT US

WELCOME
On behalf of the Florida Department of Transportation and the Central Florida Expressway Authority (CFE), formerly the Orlando-Orange County Expressway Authority, thank you for your interest in the Wekiva Parkway design and construction projects. The Wekiva Parkway (State Road 429) is a cooperative effort between these agencies and the Florida's Turnpike Enterprise.

The Wekiva Parkway (SR 429) would connect to SR 417, completing the beltway around northeast metropolitan Orlando. This estimated \$1.6 billion project includes \$200 million of non-toll road improvements including:

- Widening seven (7) miles of SR 429 in Lake and Seminole Counties
- Rebuilding the US 441/SR 429 interchange in Mount Dora
- Shifting the CR 443 connection to SR 429 so wildlife can move more safely between habitats.

[Click here to view the overall Project Schedule.](#) Please understand schedules are subject to change due to a host of variables.

WEKIVA PARKWAY PROJECT SECTION MAP
Click on a Section Number for Project Details.



[Click here to view larger map.](#)

The 30-mile tolled expressway will provide travel alternatives and relieve US 441, SR 429 and other area roads of traffic congestion resulting from growth and travel between Orange, Lake and Seminole Counties.

Authorized in 2002 by the Wekiva Parkway and Protection Act (Chapter 268, Part II, F.S.), this expressway has been heralded as a shining example for transportation planning through an environmentally sensitive area. Development of the Wekiva Parkway has included setting aside more than 2,000 acres of land for conservation. The parkway also will include numerous wildlife bridges, and will be largely elevated to reduce accidents between vehicles and wildlife.

HELPFUL LINKS
Central Florida Expressway Authority
Florida Department of Transportation
Roads 211
SunRail
I-4 Project
FDOT Central Florida Project
Florida's Turnpike Enterprise

FOLLOW US
Facebook
Twitter

Copyright 2012. All rights reserved. Home | FDOT Sections | OFX Sections | Sections by County | Project History | FAQ | Contact Us
Public participation is advised. Vehicles required to wear, color, national origin, age, sex, religion, disability or family status.

LATEST NEWS
Click on link for details.
June 2014
More Than 100 Attend FDOT Section 3 Public Meeting Open House
June 2014
Wekiva Parkway POAG Study Wins 2014 Engineering Excellence Award
June 2014
Seminole County Commissioners Receive Update on Wekiva Parkway
May 2014
Check Out the Latest Section 4.1 & 4.2 Construction Photos
April 2014
More Than 200 Attend FDOT Public Meeting on Sections 2 & 3

PUBLIC MEETING - 100 Plus Attend FDOT Section 3 Meeting

PROJECT DOCUMENTS

PRESENTATIONS

PRESS RELEASES

CONTACT US
Mary Brooks
Public Information Officer
Info@wekivaparkway.com
407-694-5505





Thank You!

This presentation will begin again shortly.

