



A Regional Transportation Solution

Community Open House

**Pre-Construction 100% Design
Section 2 (429-204, -205 & -206)
September 24, 2015**



We'd like to thank you for attending tonight's community open house on Wekiiva Parkway Section 2. The focus of tonight's meeting is the Central Florida Expressway Authority's second part of the parkway slated for construction.

These parkway sections will be built north of Kelly Park Road between Round Lake Road, Mount Plymouth Road, or County Road 435, and State Road 46. CFX is scheduled to begin building this portion of the parkway in 2016.

This presentation will provide: parkway overview information ...an update on Section 2 ... and information on the sections already under construction ... We'll also provide information on how to get updates on all of these projects during construction.

This meeting and project are being conducted without regard to race, color, national origin, age, sex, religion, disability or family status. Persons wishing to express their concerns relative to compliance with Title VI of the Civil Rights Act of 1964, 42 U.S.C. Section 2000d by the Central Florida Expressway Authority (CFX) may do so by contacting:



Joseph L. Passiatore
CFX General Counsel
4974 ORL Tower Road
Orlando, FL 32807
407-690-5000

Joe.Passiatore@CFXWay.com

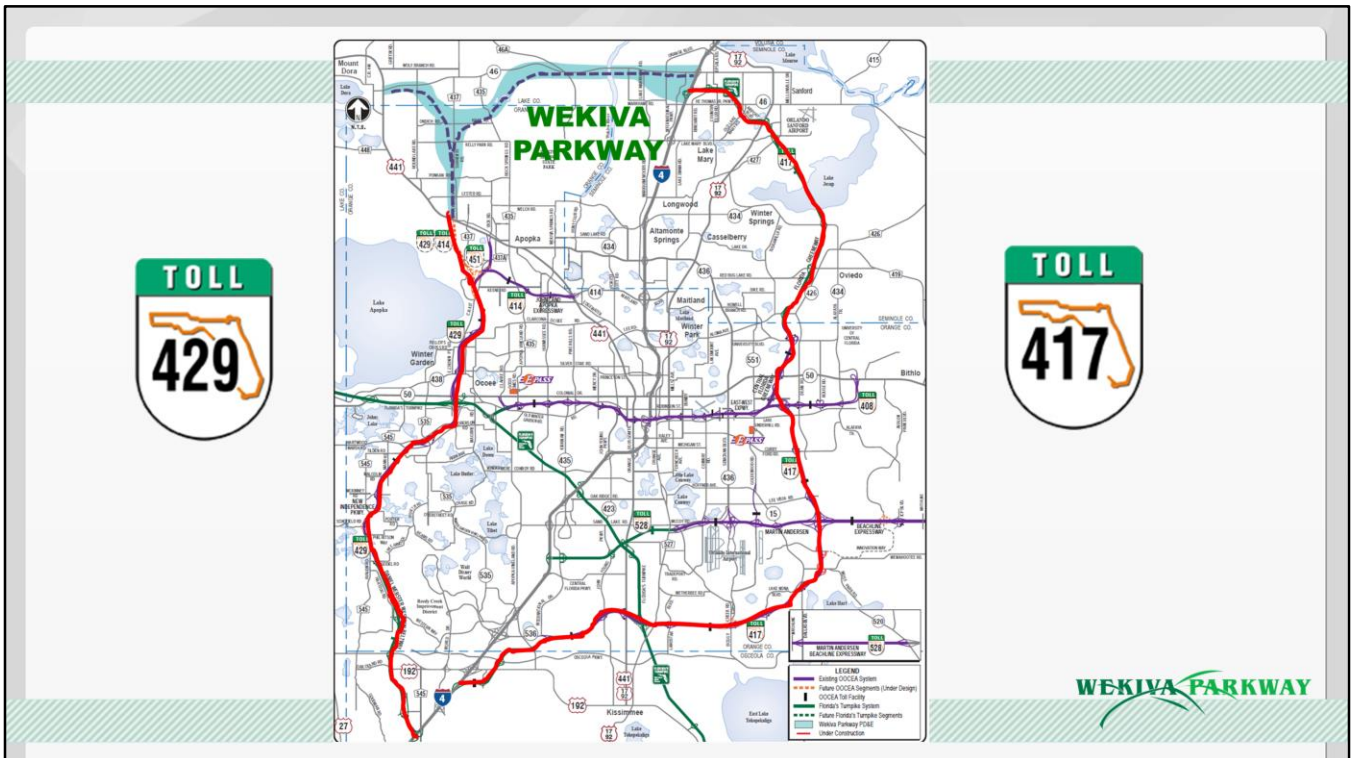
All inquiries or complaints will be handled according to CFX procedure and in a prompt and courteous manner.



This meeting and project are being conducted without regard to race, color, national origin, age, sex, religion, disability or family status.

Persons wishing to express their concerns relative to compliance with Title VI by the Central Florida Expressway Authority – or CFX – may do so by contacting the agency representative noted here.

All inquiries or complaints will be handled according to CFX procedure and in a prompt and courteous manner.



Here you can see how the 25-mile Wekiva Parkway will fill in the beltway's "missing link."

The long-awaited parkway will provide travel alternatives ... enhance safety ... and relieve traffic congestion on US 441, SR 46 and other area roads.

Project Description

- **\$1.6 Billion Completion of Central Florida's Beltway**
- **25-mile Toll Road**
- **Non-Toll Road Improvements:**
 - **Improving SR 46 in Lake & Seminole Counties**
 - **Rebuilding the US 441/SR 46 Interchange**
 - **Parallel Service Roads in East Lake & Seminole Counties**
- **Multi-use Trail (Parts of East Lake & Seminole Counties)**

CENTRAL
FLORIDA
EXPRESSWAY
AUTHORITY



WEKIVA PARKWAY

The parkway is a collaborative effort between the Central Florida Expressway Authority and the Florida Department of Transportation – District Five. The Florida's Turnpike Enterprise will operate the Department's sections once complete.

The \$1.6 Billion Wekiva Parkway – a new 25-mile toll road -- will include a number of non-toll road improvements:

- Widening about 7 miles of SR 46
- Rebuilding the US 441/SR 46 interchange in Mount Dora
- And building parallel service roads for those who don't want to pay a toll for local trips

The Department also will be including a 10-mile, multi-use trail along its portion of the parkway.

All Electronic Tolling (AET)

- First in Central Florida
- No Toll Plazas – No Cash
- Enhances Safety
- Maximizes Convenience
- AET Info on Website
- Reduces Noise & Pollution
- Improves Mobility
- Saves Money



The Wekiva Parkway will be the first expressway in Central Florida to feature All Electronic Tolling. There will be no toll plazas – we encourage users to get an E-PASS or SunPass to pay their tolls at safe, highway speeds. Both FDOT and CFX will accommodate those who do not have a transponder.

All Electronic Tolling – or AET: Enhances safety by eliminating the weaving between different lanes at toll plazas.

Maximizes convenience: Customers pay their tolls at safe highway and ramp speeds, without having to slow down or stop.

Improves Mobility: Traffic flows more freely with non-stop travel for all customers.

You can find out more about AET on the wekivaparkway.com website under All electronic tolling.

Protecting Nature

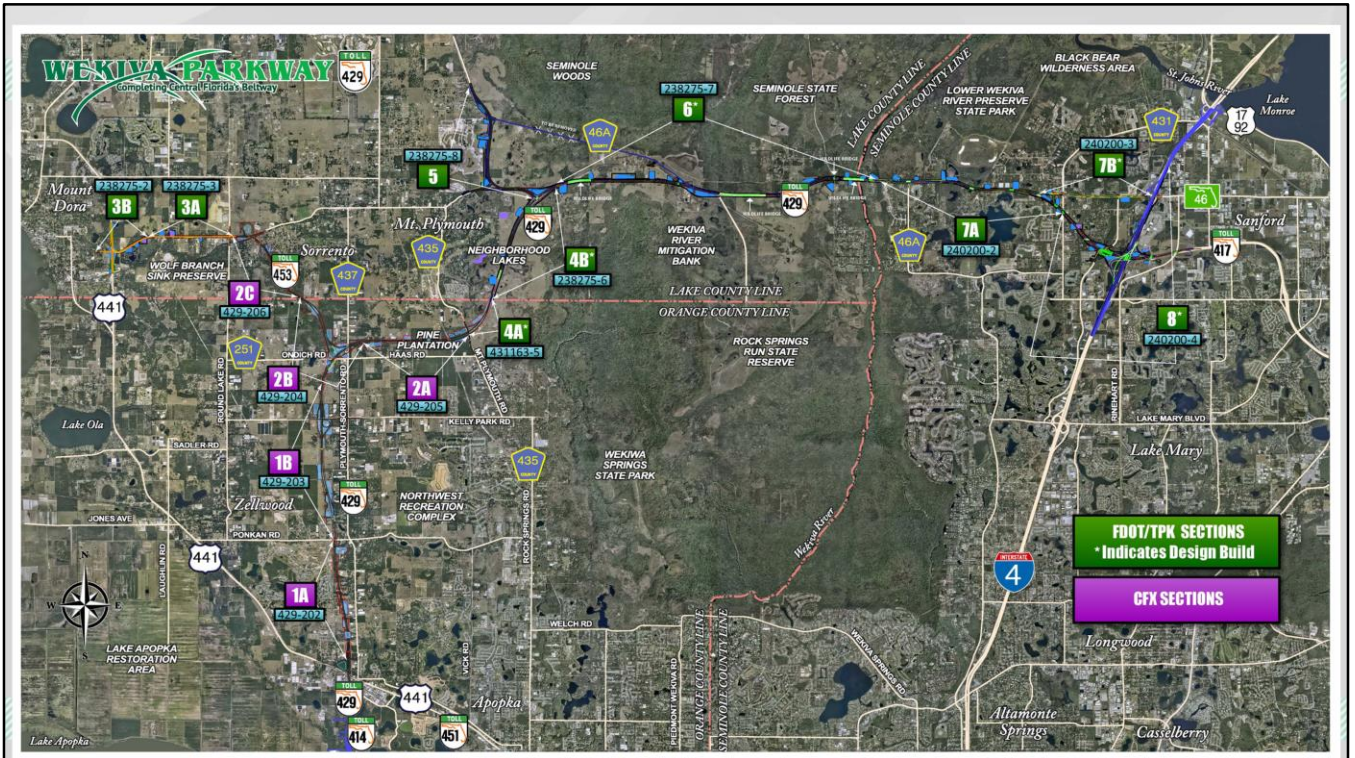
- **Wekiva River: Outstanding Florida Water & National Wild & Scenic River**
- **Authorized: 2004 Wekiva Parkway & Protection Act**
 - **Setting Aside 3,400 Acres for Conservation**
 - **Largely Elevated to Reduce Collisions Between Vehicles & Wildlife**
 - **Several Wildlife Bridges**
 - **Moving CR 46A Out of Seminole State Forest**
 - **Limited Interchanges (Curb New Development)**



WEKIVA PARKWAY

The Wekiva Parkway features unique environmental considerations to help protect wildlife and other natural resources in the Wekiva River Basin. The river is an outstanding Florida waterway, and a national wild and scenic river. It passes through habitat that is home to dozens of wildlife species including the Florida black bear, bald eagle, burrowing owls and sandhill cranes.

The agencies have diligently adhered to the 2004 Wekiva Parkway and Protection Act, ... including setting aside 3,400 acres for conservation ... and planning several substantial wildlife bridges. The parkway also will have a minimal number of interchanges - to limit the amount of related development in this environmentally sensitive area.



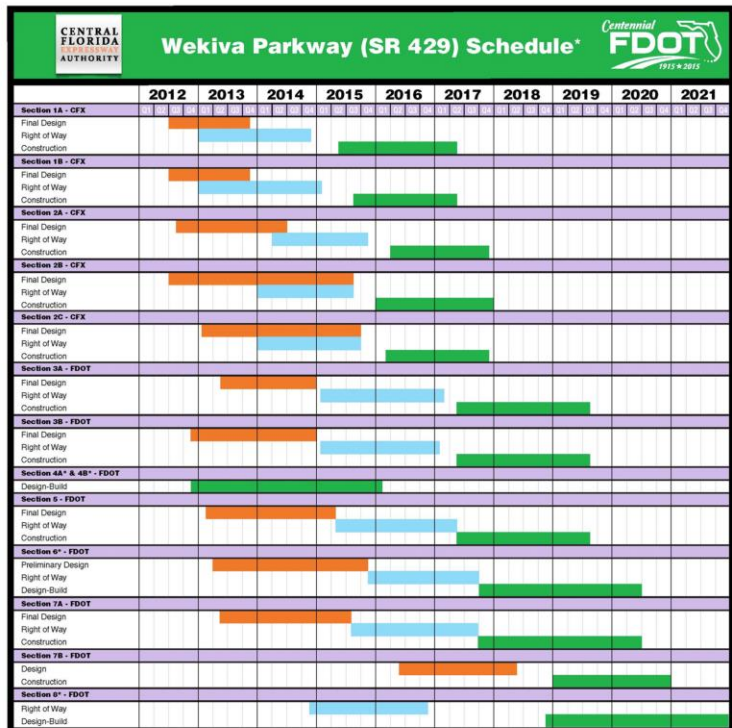
As shown on this map, the Wekiva Parkway consists of 14 project sections.

The sections are split between CFX and the FDOT for design, construction, operation and maintenance.

The CFX sections are shown in purple. The FDOT sections are shown in green. This map can also be found on the www.wekivaparkway.com project website. The map on the website is interactive – click on the section icon of interest to get section-specific maps and other information.

The Overall Wekiva Parkway Schedule is available for review at tonight's meeting.

Please keep in mind that schedules are subject to change.



Here is the latest overall project schedule reflecting the federal TIFIA loan received earlier this year for the CFX sections. The federal funding will allow all five CFX sections to be open to traffic by January of 2018 – more than a year earlier than originally planned.

Keeping in mind that schedules are subject to change ... Wekiva Parkway Design – as shown by the orange bars – should largely wrap up for the parkway in 2015.

Right of Way acquisition – shown in blue – should roughly be done by the end of 2017.

The green bars represent construction – with all of the sections scheduled to be open to traffic by late 2021.

Central Florida Expressway Authority



WEKIVA PARKWAY
Completing Central Florida's Beltway

So let's focus in more now on the CFX sections of the parkway.

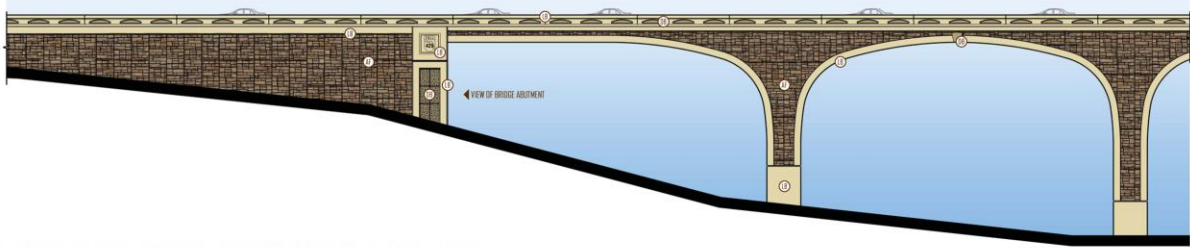
CFX Sections



WEKIVA PARKWAY

Here you can see the five sections of the Wekiva Parkway being developed by CFX. The sections are largely in Orange County, with one section – 2C in the upper left corner – crossing into Lake County. CFX is building about 10 miles of the parkway. These sections stretch from near US 441, where the SR 429 currently ends ... to SR 46 to the north ... and CR 435 to the east.

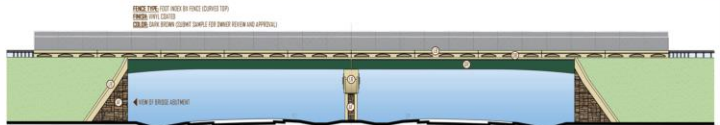
Aesthetics Plans



LOW AREA/LAKE VICTOR - BRIDGE MSE WALL ELEVATION NOT TO SCALE



LOW AREA/LAKE VICTOR
BRIDGE MSE WALL ABUTMENT ELEVATION NOT TO SCALE



YOTHERS ROAD BRIDGE NOT TO SCALE



KELLY PARK ROAD BRIDGE NOT TO SCALE

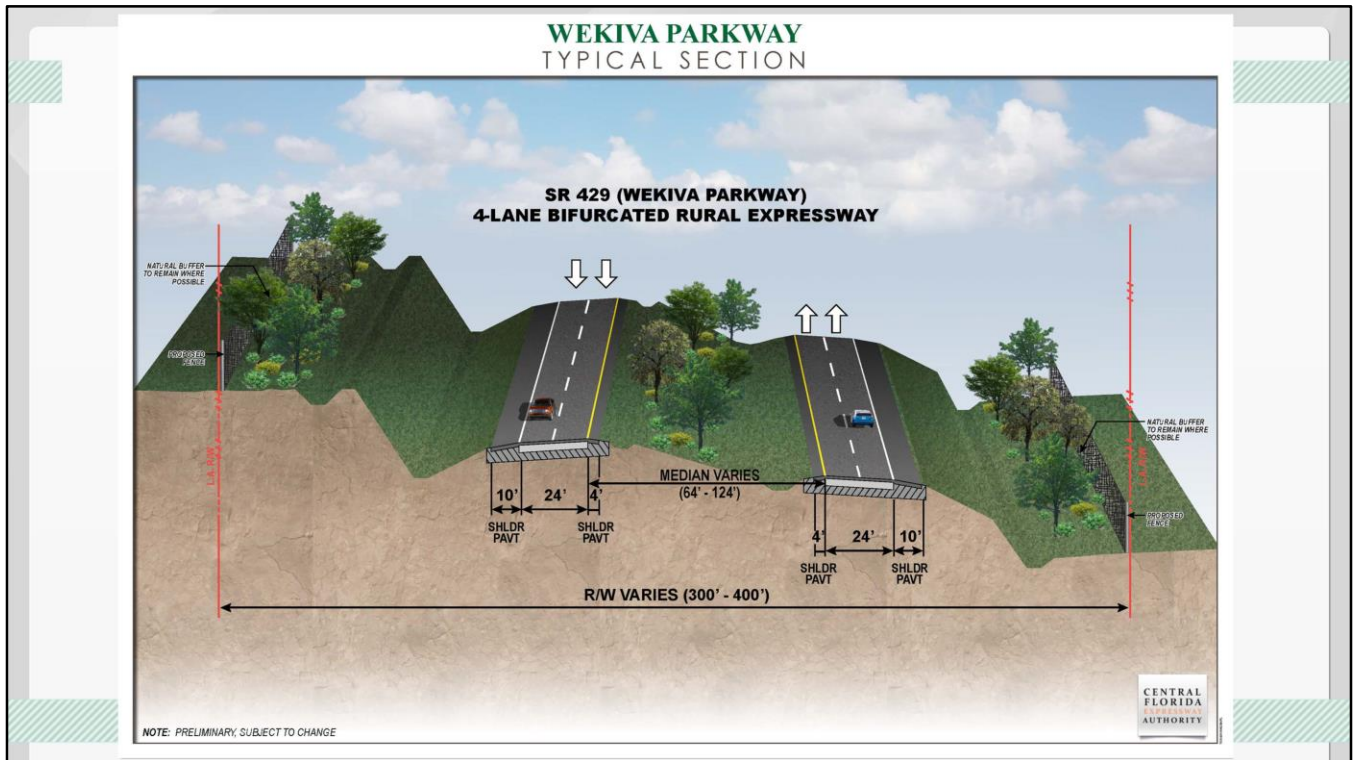
There has been a lot of discussion about ensuring this expressway has a “parkway feel.” CFX has developed designs for giving bridges and other structures a more rustic or natural appearance. Here you see examples of some of the coloring and stone relief that are being planned for bridge structures.

Aesthetics – Wall Mockup



WEKIVA PARKWAY

Here's a real-world mockup of what a retaining wall on Section 1A will look like. The textured concrete will be stained with warm brown and tan colors, giving the stone relief a rustic appearance to the surrounding community.



CFX is also working to give the roadway that “parkway feel” through leaving natural, vegetative buffers wherever possible.

Where space allows, we’re planning bifurcated -- or wider -- medians that will give more room for landscaping.

This is in an effort to enhance the driver experience and also help the roadway blend in more with its surroundings.

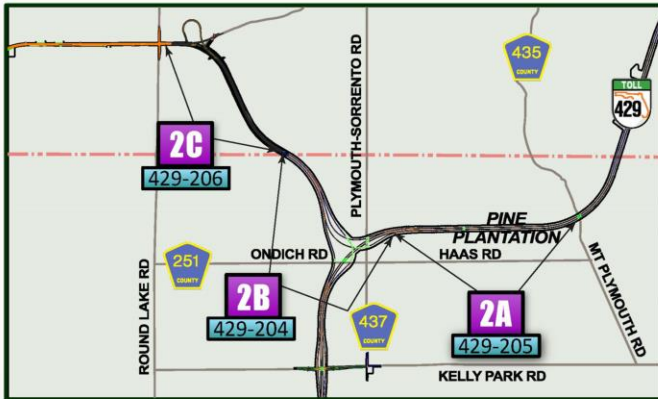
Central Florida Expressway Authority

**Sections 2A, 2B & 2C
(429-204, -205 & -206)**



The focus of tonight's meeting is to show you the 100 percent design plans for CFX's next three sections slated for construction.

CFX Sections 2A, 2B & 2C Update



WEKIVA PARKWAY

- ✓ **Design Complete: 2015**
- ✓ **Section 2B:**
 - ✓ CEI Selected: A Squared
 - ✓ Contractor: Under Procurement
 - ✓ Construction Start: Jan. 2016
- ✓ **Section 2C:**
 - ✓ CEI Procurement: Underway
 - ✓ Contractor Ad: Nov. 2015
 - ✓ Construction Start: Mar. 2016
- ✓ **Section 2A:**
 - ✓ CEI Procurement: Underway
 - ✓ Contractor Ad: Jan. 2016
 - ✓ Construction Start: Apr. 2016

CFX has finished design on Sections 2A, 2B and 2C, shown on the map inset here. The hiring of firms to do this work is well underway. These projects in Orange and Lake Counties are planned between Kelly Park Road, Round Lake Road, State Road 46 and Mount Plymouth Road – or County Road 435.

Construction is planned to begin in 2016. Completion of all three sections is scheduled in January of 2018. As mentioned earlier, this is an accelerated timeframe from the original schedule.

Now let's look at the individual sections starting next year...

Construction Impacts

Affected Side Streets:

Ondich Rd.
Plymouth Sorrento Rd.
Mt. Plymouth Rd. / County Road 435

Coronado Somerset Dr.
State Road 46

Construction Vehicles

Detours

Noise

Night Work

- No Pile Driving 10 p.m. – 6 a.m.

Road & Lane Closures

Utility Work

Vibration

Dust



CFX wants drivers to be aware of some of the construction impacts to travelways that will occur during these projects. To allow construction of the various bridges for the Section 2B interchange, for example, Ondich Road traffic will shift onto temporary lanes for some time.

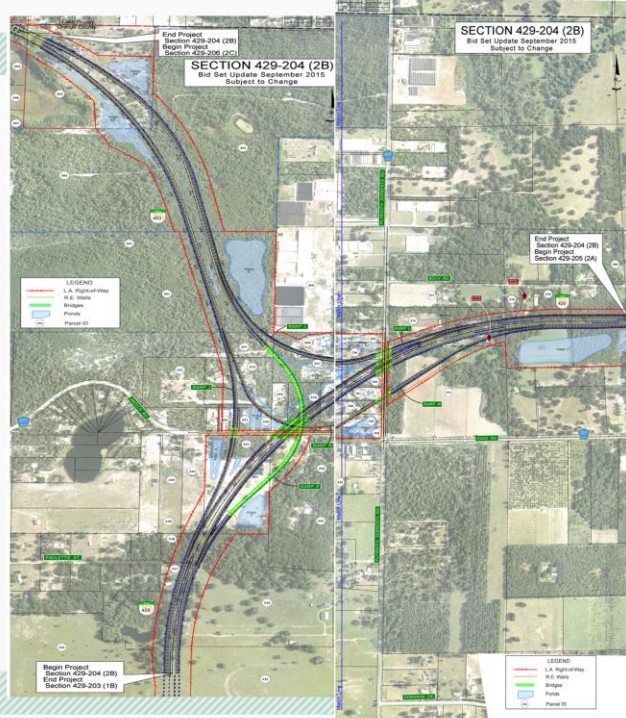
Motorists also can expect lane closures on the other roadways, as well as other construction impacts, shown here.

CFX posts news about lane and road closures on wekivaparkway.com and www.CFXway.com about.

Motorists should always obey the posted speed limits, safety signs and devices in the work zone. Drivers should be mindful of construction vehicles entering and leaving the roadway.

Noise, dust and vibration are unavoidable byproducts of construction. We will do what we can to try to minimize these impacts. We also will provide the community with advance notification of lane and road closures, detours and night work, whenever possible.

CFX Section 2B



WEKIVA PARKWAY

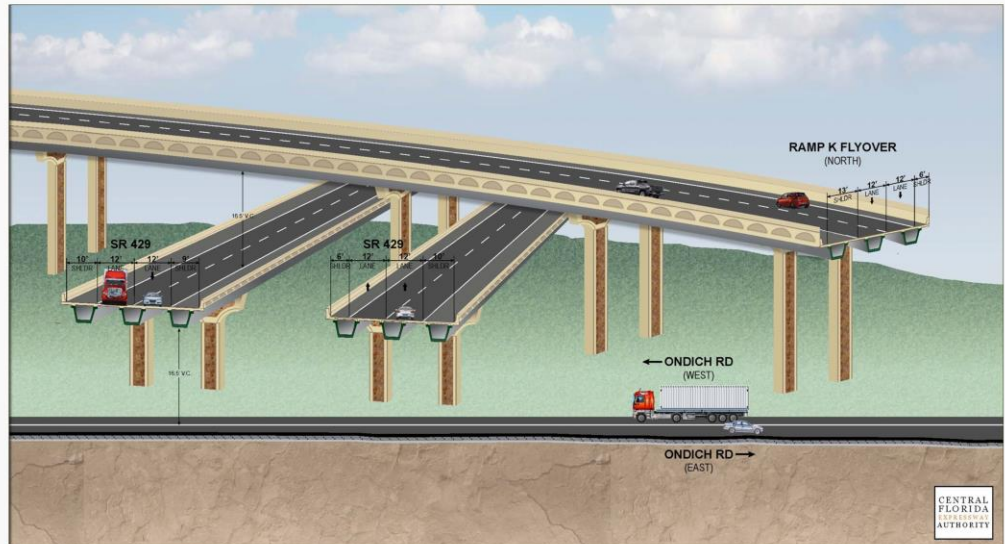
T890205130022509L

This 1.5-mile project includes a multi-level interchange and will extend the expressway northwest from Ondich Road to the Lake County line. On the east side of the interchange the roadway will extend to just east of Plymouth Sorrento Road. Bridges are shown here in green.

This systems interchange will allow drivers to decide whether to go east toward East Lake and Seminole Counties, ... or northwest toward Mount Dora.

CFX Section 2B – Typical Section

Multi-level
Systems
Interchange
with
Aesthetics



WEEKIVA PARKWAY

Here is a typical section view of the multi-level interchange on Section 2B. In this view from Ondich Road, you can see the mainline SR 429 as it passes under the Ramp K Flyover. Ramp K will allow motorists to head north toward the Lake-Orange County line and SR 46.

SR 429 in this area begins to veer east toward Section 2A and County Road 435. Also in this location, but not shown here, is Ramp M, which will pass under SR 429 for drivers coming from the area of SR 46, south across the county line and east toward Section 2A and County Road 435.

At its highest point, Ramp K will reach 60-65 feet in order to be able to get over the other interchange levels.

CFX Section 2C



WEKIVA PARKWAY

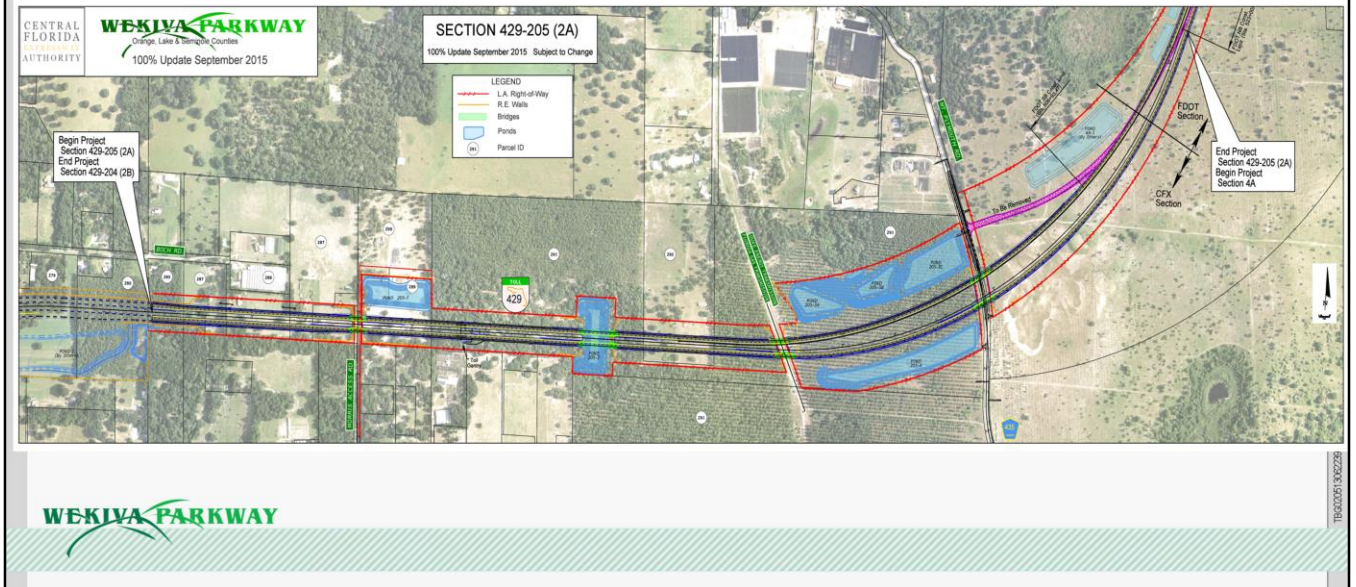
CENTRAL FLORIDA AUTHORITY
WEKIVA PARKWAY
Orange, Lake, and Osceola Counties
100% Update September 2015

T:\8002051\8002250\RL

Section 2C involves building 1.6 miles of expressway from the Lake County-Orange County line to a loop interchange at SR 46 just east of Round Lake Road. Section 2C will connect to the Florida Department of Transportation's Section 3A to the west along SR 46. The green portions of the parkway indicate bridges at Coronado Somerset Drive and State Road 46.

The retention pond inside the loop will hold roadway runoff for both the CFX Section 2C and FDOT Section 3A. This collaboration helped to minimize the impacts to nearby property owners on both sections. The pond is also naturally shaped and will be landscaped to be more pleasing to the eye.

CFX Section 2A



The 2-mile Section 2A parallels Haas-Ondich Road. Section 2A will connect with section 2B to the west and FDOT's Sections 4A & 4B to the east. Work will include new bridges over Morris Access Road, a Florida Gas Transmission easement and Mount Plymouth Road (County Road 435).

Section 2A goes through the former Pine Plantation property – the large dark green area shown here on the west side of CR 435. This property was one of several parcels purchased for conservation as part of developing the Wekiva Parkway.

Central Florida Expressway Authority

Sections Under Construction



So now let's look at the CFX sections already under construction.

CFX Sections 1A & 1B Under Construction

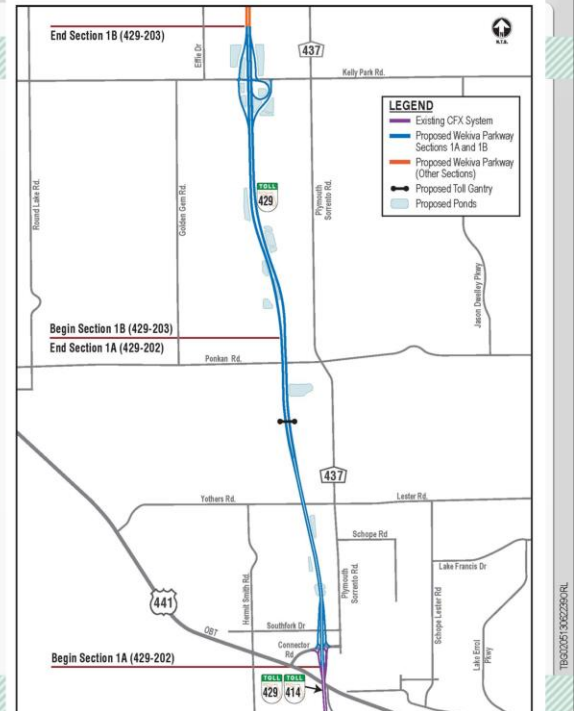
Section 1A

- Construction Start: June 8, 2015
- US 441 / Connector Rd. to Ponkan Rd.
- Contractor: Prince; CEI: RK&K

Section 1B

- Construction Start: Aug. 3, 2015
- Ponkan Rd. to Kelly Park Rd. Interchange
- Contractor: Superior Construction; CEI: GAI

Completion: Spring 2017



CFX this summer began construction on its first two sections in Apopka: Sections 1A and 1B. These sections stretch from US 441 near Plymouth Sorrento Road to the planned Kelly Park Road interchange in Apopka. You can see here the firms hired by CFX to accomplish these projects.

Both sections are scheduled to open to traffic in the spring of 2017.

Section 1 - Construction Impacts

Parkway Depressed

- Under Belgian St. & Yothers Rd. (Road Closure / Detour)
- Similar: SR 414 Under Marden Rd.



Construction of Section 1A will include “depressing” or lowering the parkway below ground in the area of Belgian Street and Yothers Road. During construction in this area, Yothers Road will be closed and a detour put in place. CFX will provide advance notice of this closure.

This will reduce the visibility and noise from the parkway in this area. In these locations, the parkway will be somewhat similar to the way SR 414 runs underneath Marden Road (shown here).

Construction Impacts

Other Affected Side Streets:

Southfork Dr.

Kiowa Ave.

Hideaway Rd.

Phils Ln.

Plymouth Sorrento Rd.

Ponkan Rd.

Kelly Park Rd.

SR 429 Connector Rd.

Construction Vehicles

Detours

Noise

Dust

Night Work

- No Pile Driving 10 p.m. – 6 a.m.

Road & Lane Closures

Utility Work

Vibration



Work so far has entailed some of the construction impacts shown here. Lane and road closures so far have been mostly limited to the SR 429 Connector Road, but you can see here that other side streets will be affected at various times.

Section 1A



WEKIVA PARKWAY
Completing Central Florida's Beltway

Pile Driving began Aug. 11 on Section 1A for bridges planned at the SR 429 Connector Road near US 441 in Apopka. Earthwork is underway, and work on drainage pipe is expected to begin in October.

Section 1A



WEKIVA PARKWAY
Completing Central Florida's Beltway

Crews have nearly completed clearing the vegetation and structures on Section 1A, and are focused on removing debris.

Section 1A



WEKIVA PARKWAY
Completing Central Florida's Beltway

Here you can see some aerial shots of the construction. These shots show the SR 429 Connector Road.

Section 1B



Section 1B – which includes the Kelly Park Road interchange – is in the process of clearing and removing vegetation and structures. On both of these sections CFX and project staff are working closely with property owners to address questions and concerns.

Section 1B



Here are some aerial shots of Section 1B. On the left is the section just north of Ponkan Road. The middle picture is from midway on this section, and the last shot is showing Kelly Park Road. You can see how work is progressing from south to north on this section.

What's Next?

Section 2 (429-204, -205 & -206) – Construction Begins Early 2016

Section 1 (429-202 & -203) – Open Spring 2017

- **Opportunities for Community Updates**

Presentations

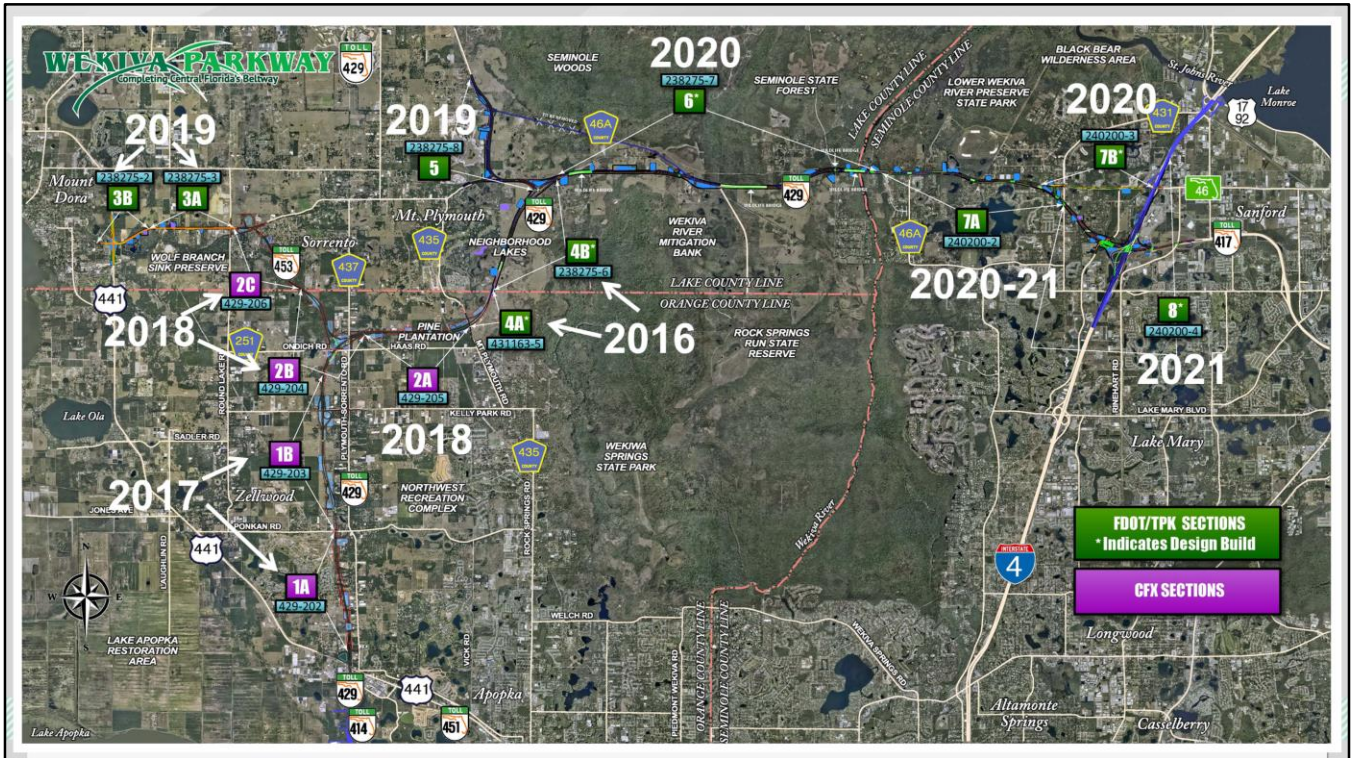
Website: www.wekivaparkway.com – Latest News, Construction Updates &
Sign up for Email Updates



In terms of what's next for the CFX Sections of the parkway: Construction begins in 2016 on the Section 2 projects. And Section one is scheduled to open to traffic in spring of 2017.

We continue to offer opportunities for community updates. If you know of a group that would like a presentation on the project, contact public information officer Mary Brooks as shown on an upcoming slide.

You can also get updates and submit questions or comments via the www.wekivaparkway.com website.



Here's a snapshot of when the various Wekiva Parkway sections are expected to open to traffic. Basically the plan is to have a new section open every year or two, starting with 4A & 4B in early 2016. And then Section 1 in the spring of 2017 and so on.

All of the project is expected to be open to traffic by the end of 2021.

For More Information:

Mary Brooks

Public Information Officer

C: 407-694-5505

E: Info@wekivaparkway.com

W: www.wekivaparkway.com



You can contact public information officer Mary Brooks as noted here.

All of the exhibits in this presentation will be available on the project website – www.wekivaparkway.com - early next week. There's also a wealth of other Wekiva Parkway information there for your review.

And for real time updates, follow the project on Facebook and twitter.

Get the Latest Online Construction Updates

WEKIVA PARKWAY
Completing Central Florida's Beltway

HOME SECTIONS PROJECT HISTORY ALL ELECTRONIC TOLLING **CONSTRUCTION UPDATES** FAQ CONTACT US

CONSTRUCTION UPDATES

Wekiva is your construction information source for the Wekiva Parkway. We strive to meet the all concerns Central Florida's Beltway. Here you can find the full construction schedule, lane and road closures, and details. You can also view the latest community presentations or request an update for your project. All done on the appropriate build section.

Construction on the Wekiva Parkway is being done in sections by the Central Florida Expressway Authority (CFEA) and the Florida Department of Transportation (FDOT). FDOT began work on the first sections in 2011. These two design-build sections extend from U.S. 441 to Pumphrey Road (County Road 422) north of Lake Road in Orange County, to State Road 46 west of County Center Road in Lake County. Work on the section is scheduled to finish in early 2016.

CFEA in June 2015 began construction Section 1A, and is slated to begin work on Section 1B on August 2, 2015. Work on the portion from near US 441 and Pumphrey-Summers Road to near Floridian Road is scheduled to finish in spring of 2017.

SCHEDULE

Check out the latest construction schedule for the Wekiva Parkway

ALERTS

Prepare for your travel by finding out the latest news on lane and road closures and more

COMMUNITY PRESENTATIONS

Schedule a project update for your community or group. Check out the latest presentations on the Wekiva Parkway

VISUAL GALLERY

Want to see the latest photos and video on how the Wekiva Parkway is taking shape? [CLICK HERE!](#)

NEWS

- September 2015
CFEA Section 1A, SR 422 Connector Road Lane Closing
- August 2015
CFEA Section 1A, SR 422 Connector Road Lane Closing
- August 2015
CFEA Section 1A, Lighttime SR 422 Lane Closure to Westbound Connector Road
- August 2015
CFEA Section 1B Ramps Off with Soggy Turnpike Reopening
- August 2015
New Photos of FDOT Sections 4A & 4B
- August 2015
Section 1A Driving to Begin on CFEA Section 1A
- August 2015
CFEA Section 1A, Be Alert for Interim Lane Closures on SR 422 Connector Road
- July 2015
CFEA Section 1A, Be Alert for Turn Lane Closures on SR 422 Connector Road
- July 2015
Construction Near Underway on CFEA Section 1A
- June 2015
CFEA Begins Building Section 1A on June 5
- June 2015
Interim Paving Operations For Section 1A on SR 422

CONTACT US

Wekiva Drive
Public Information Officer
info@wekivaparkway.com
407-654-6505

And to get the latest information on construction and possible lane closures, be sure to check out the Construction Updates page on the project website – www.wekivaparkway.com.



Thank You!

This presentation will begin again shortly.



Thank you for attending tonight's meeting. We hope you have found this presentation helpful. Project staff members here tonight are available to address questions.

You're also welcome to submit a comment form at tonight's meeting – either on paper or by using the electronic comment form on the laptop indicated. You may submit a comment form tonight, or send it later as noted on the form. You may also submit a comment to the project email address – info@wekivaparkway.com.

This presentation will begin again in a few moments ...