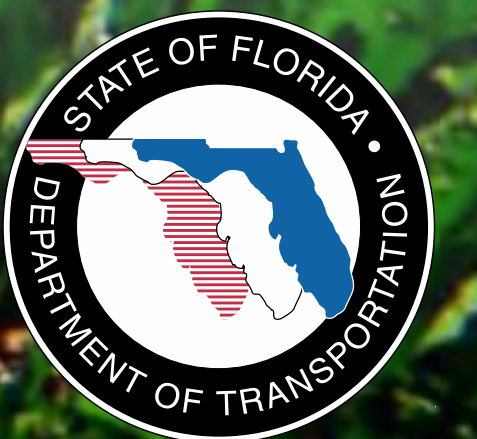


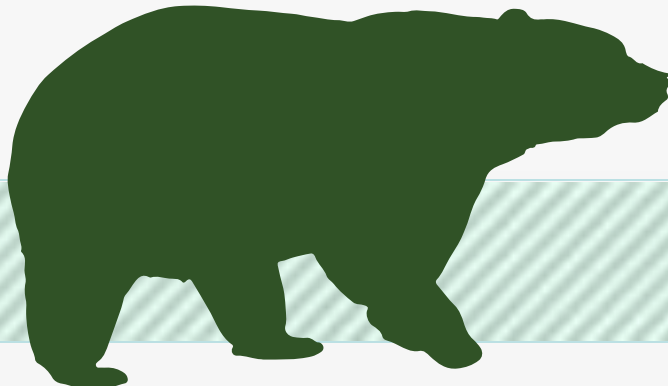
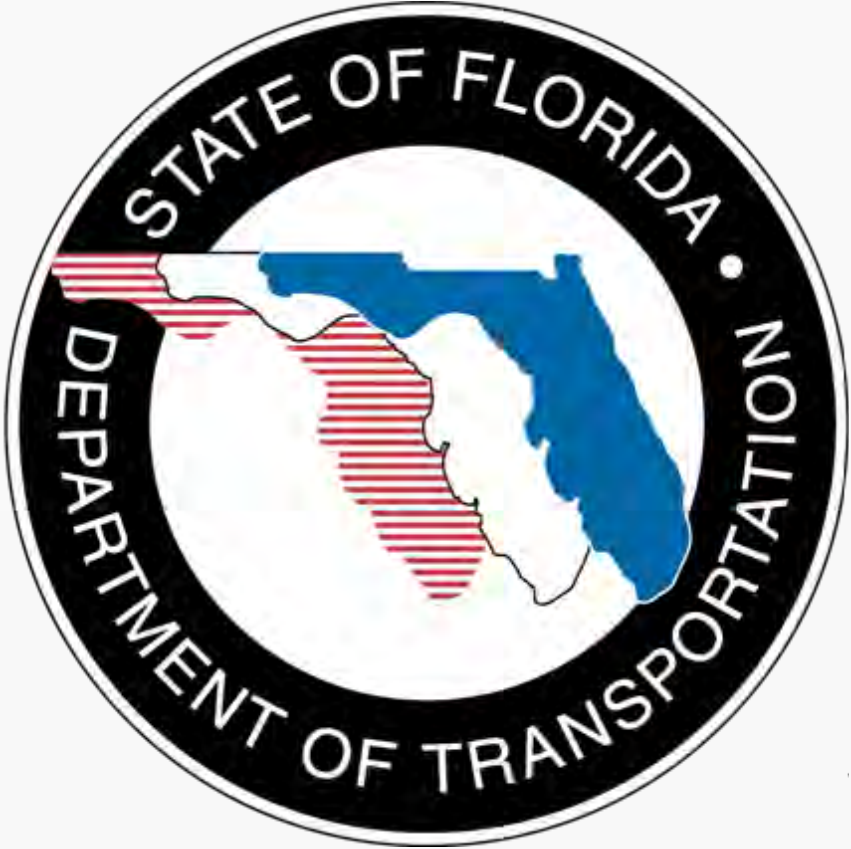


## Community Open House Meeting

**Design Update – Sections 429-204 (2B),  
-205 (2A) & -206 (2C)  
Nov. 7, 2013**

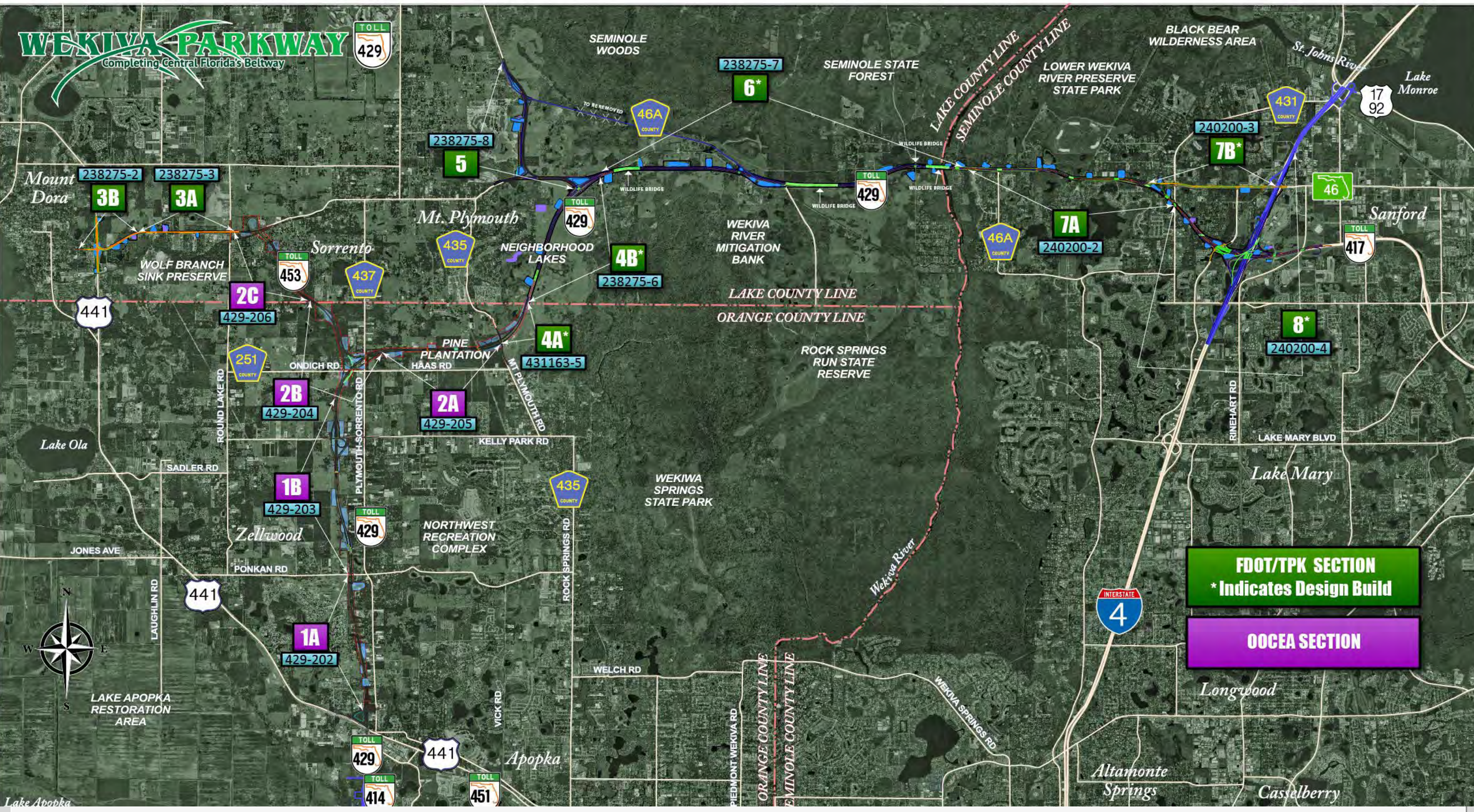


# Funding Partners



# WEKIWA PARKWAY

Completing Central Florida's Beltway



**FDOT/TPK SECTION**  
\* Indicates Design Build

**OCEA SECTION**



# WEKIVA PARKWAY



**LEGEND**

- Existing OCEA System
- Future OCEA Segments (Under Design)
- OCEA Toll Facility
- Florida's Turnpike System
- - - Future Florida's Turnpike Segments
- Wekiva Parkway PD&E
- Under Construction

**WEKIVA PARKWAY**

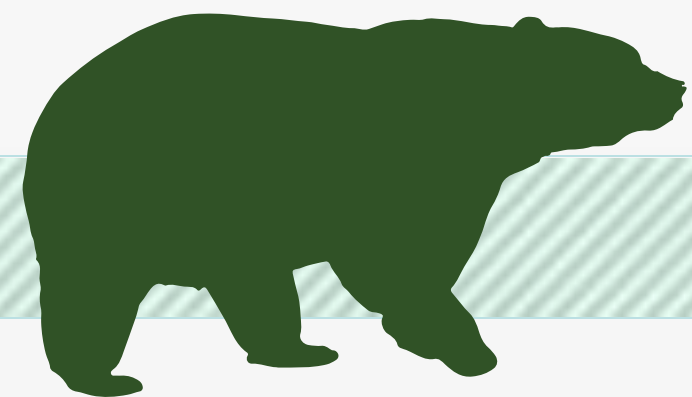
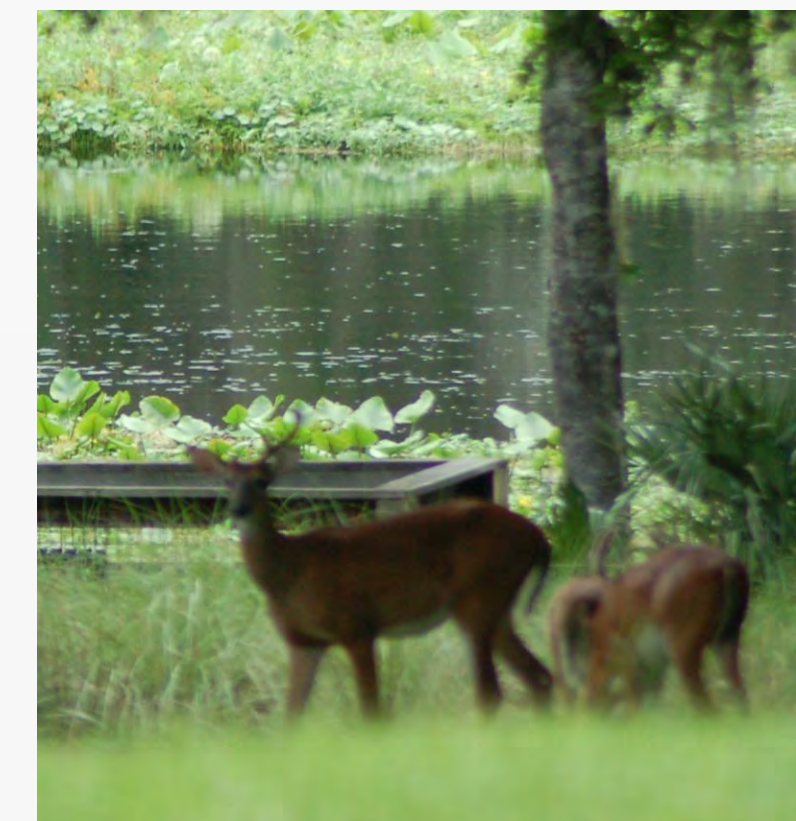
## Project Description

- **\$1.6 Billion Completion of Central Florida's Beltway**
- **25-mile Toll Road**
- **Non-Toll Road Improvements:**
  - **Widening SR 46 in Mount Dora and Sanford**
  - **Rebuilding the US 441/SR 46 Interchange in Mount Dora**
  - **Relocating CR 46A to Improve Wildlife Connectivity**
  - **Parallel Service Roads in East Lake & Seminole Counties**
- **Multi-use Trail (Portions of East Lake & Seminole Counties)**



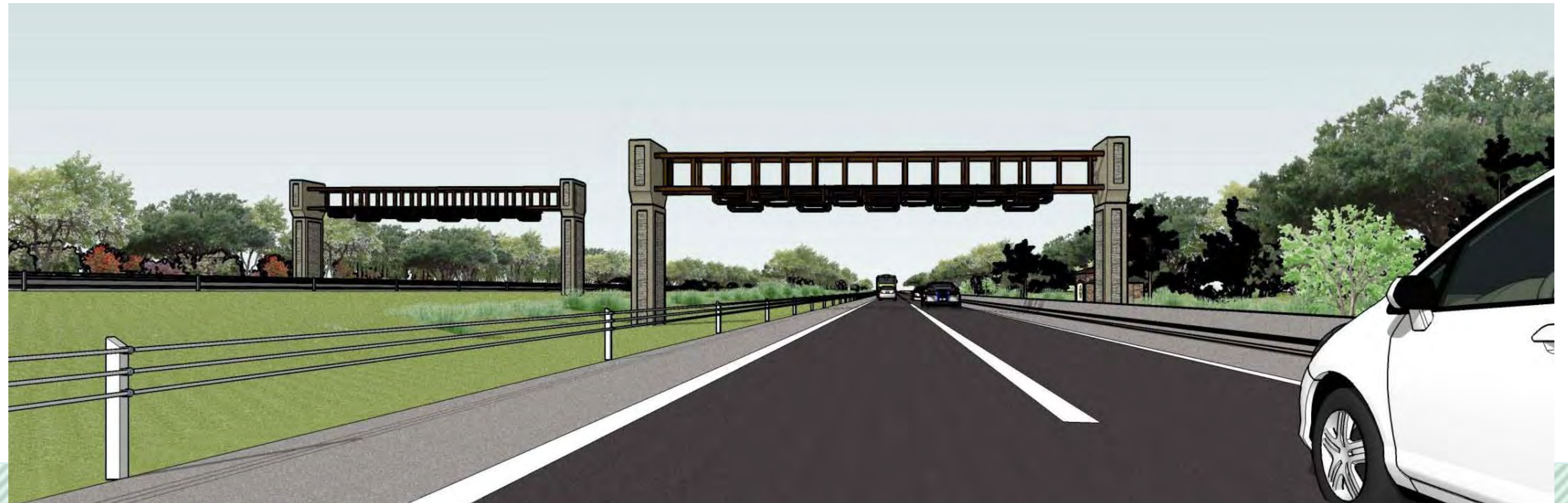
## Protecting Nature

- **Wekiva River: Outstanding Florida Water & National Wild & Scenic River**
- **Authorized by the 2004 Wekiva Parkway and Protection Act**
  - **Setting Aside More than 3,400 Acres for Conservation**
  - **Largely Elevated to Reduce Accidents Between Vehicles & Wildlife**
  - **Several Wildlife Bridges**
  - **Few Interchanges (Limit Development)**



# All Electronic Tolling (AET)

- **First in Central Florida**
- **No Toll Plazas (SUNPass or E-Pass)**
- **Improved Traffic Flow Efficiency**
- **Enhanced Safety**
- **Under Development: Locations & Costs**



# PROJECT ECONOMIC IMPACT

**At an estimated cost of \$1.6 Billion for Engineering & Construction, the Wekiva Parkway is Projected to Provide:**

|                                   |               |
|-----------------------------------|---------------|
| <b>Construction Related Jobs</b>  | <b>12,272</b> |
| <b>Supporting Industries Jobs</b> | <b>5,570</b>  |
| <b>Induced Employment Jobs</b>    | <b>17,983</b> |

**\*Estimated Total Jobs 35,825**

\*Job Multiplier Source: Federal Highway Administration (FHWA) Employment Impacts of Highway Infrastructure Investment; Updated March 2010



# Expressway Authority Aesthetics Concepts



# Pier Option

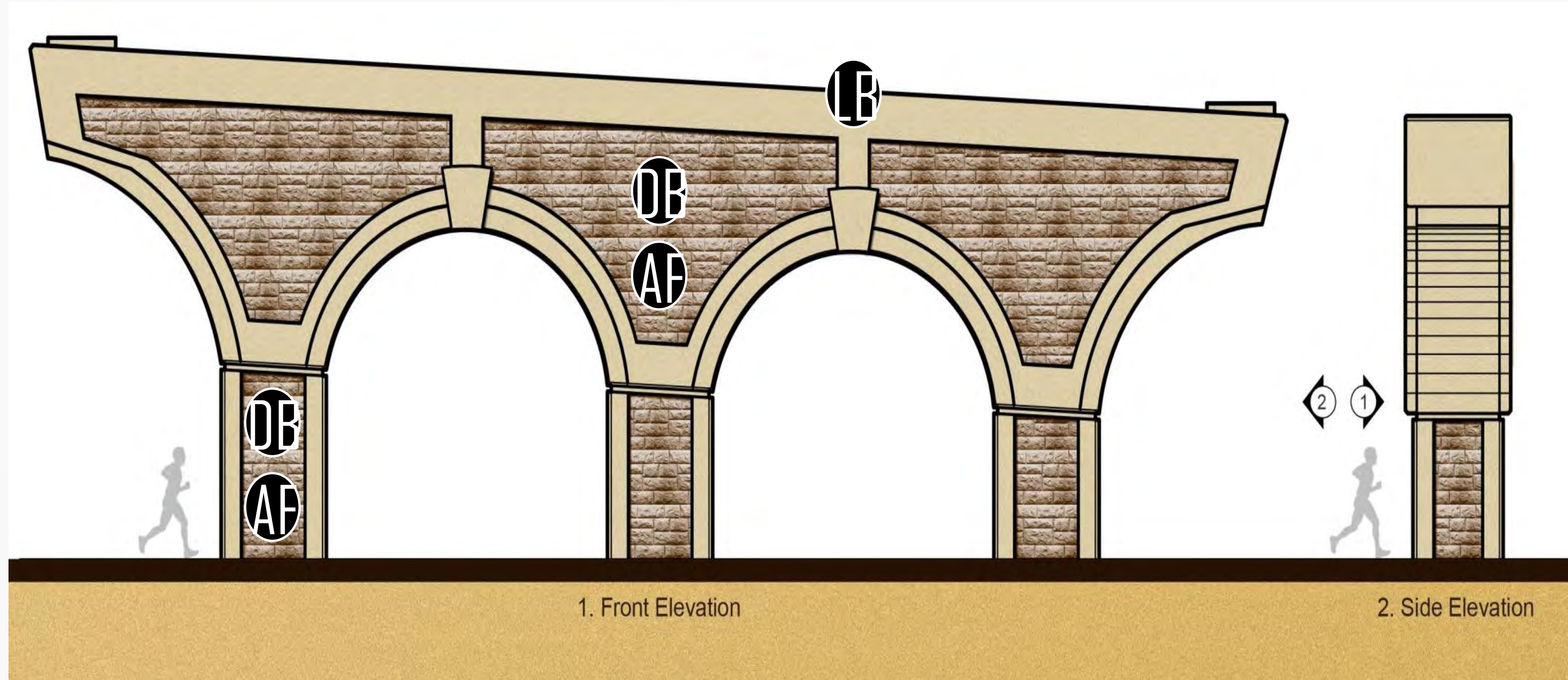
## Standard Colors



Light Brown  
Dark Green



Dark Brown  
Ashlar Formline



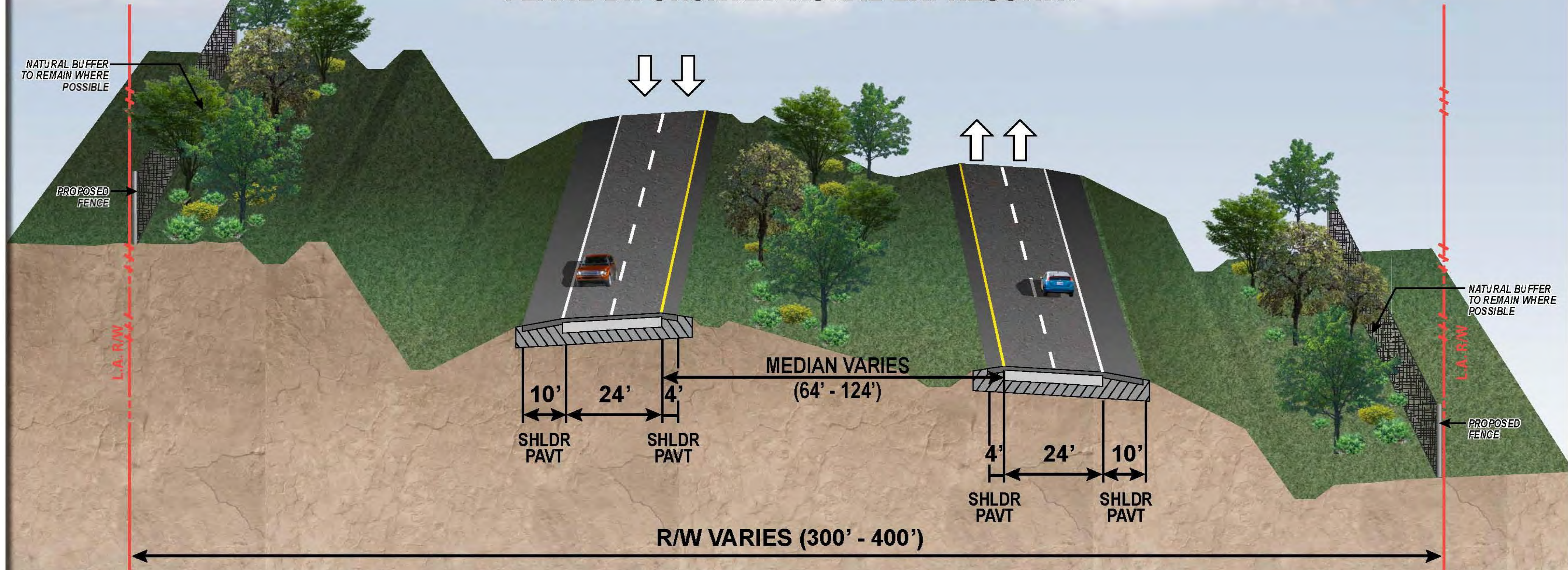
1. Front Elevation

2. Side Elevation

# WEKIVA PARKWAY

## TYPICAL SECTION

### SR 429 (WEKIVA PARKWAY) 4-LANE BIFURCATED RURAL EXPRESSWAY



NOTE: PRELIMINARY, SUBJECT TO CHANGE

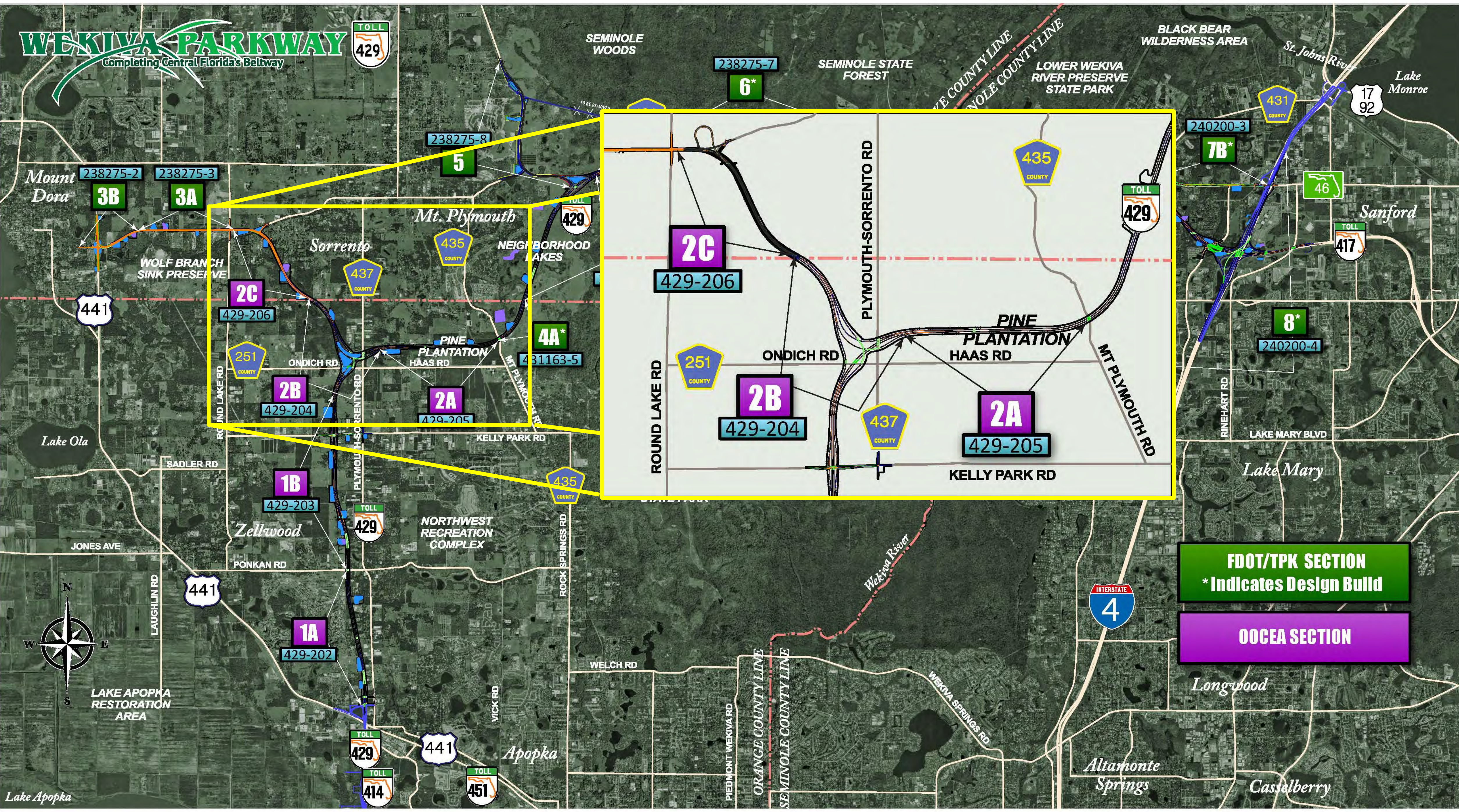


# Expressway Authority Section 2 Projects



# WEKIVA PARKWAY

Completing Central Florida's Beltway



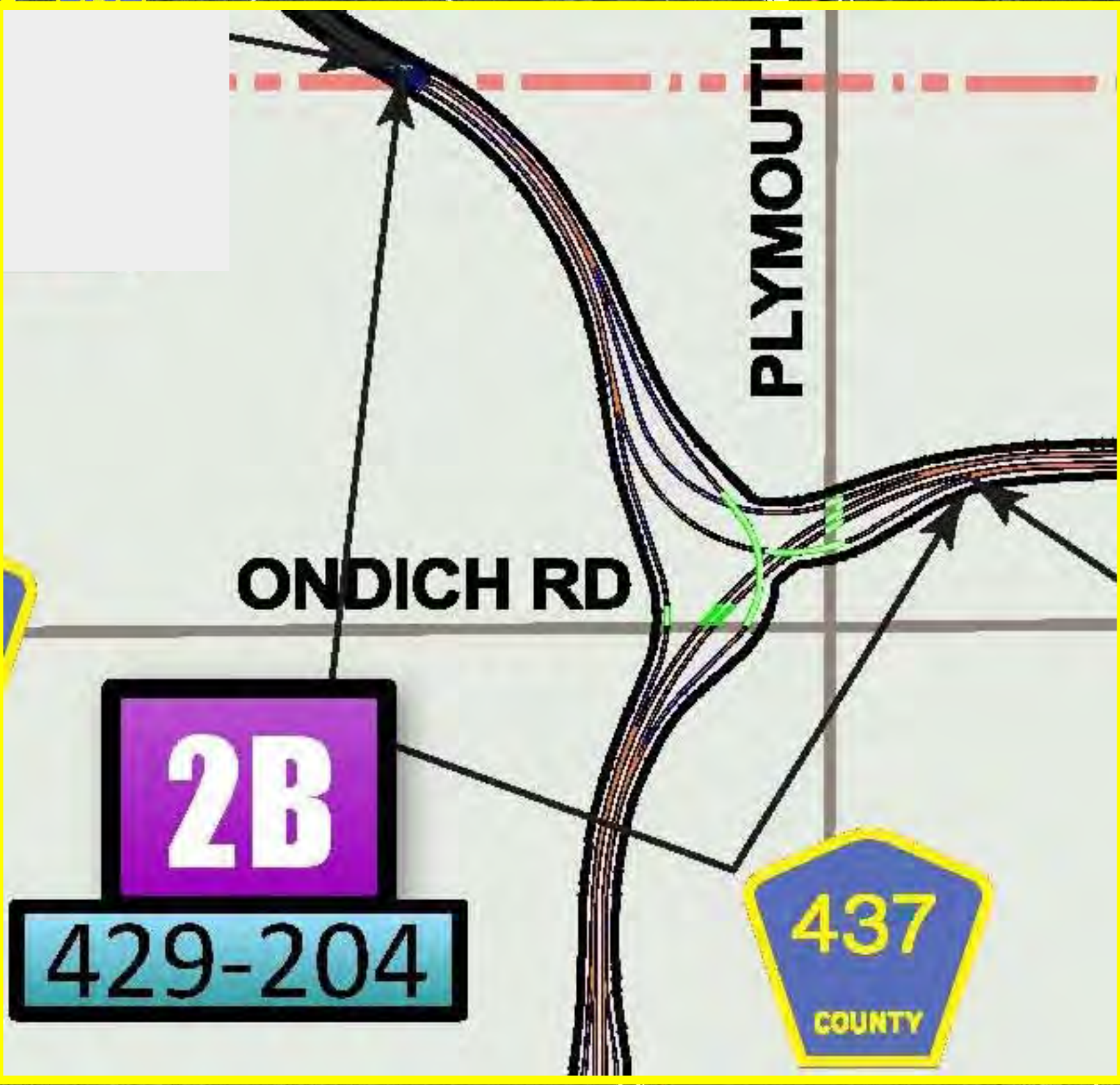
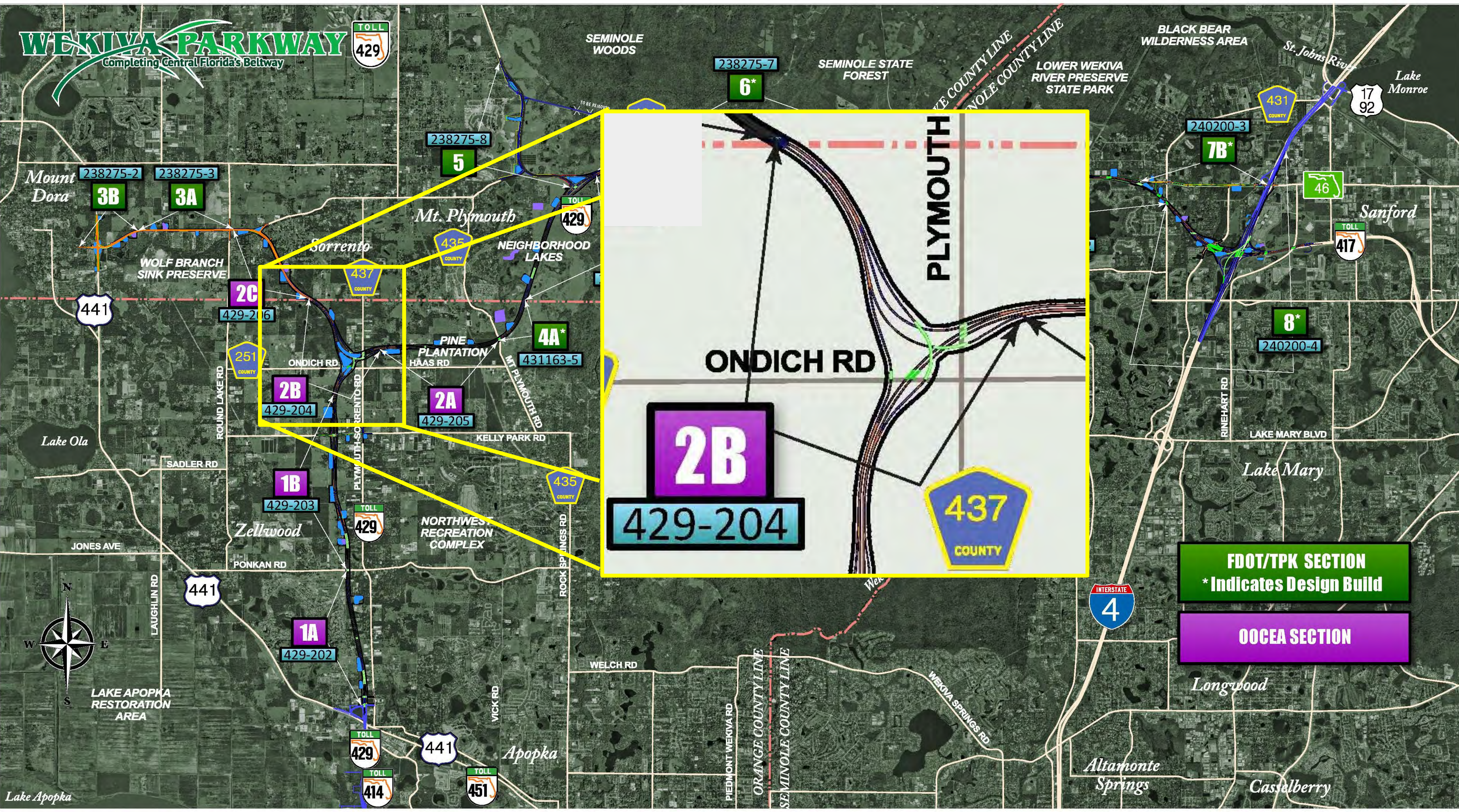
**FDOT/TPK SECTION**  
\* Indicates Design Build

**OCEA SECTION**



# WEKIVA PARKWAY

Completing Central Florida's Beltway



**FDOT/TPK SECTION**  
\* Indicates Design Build

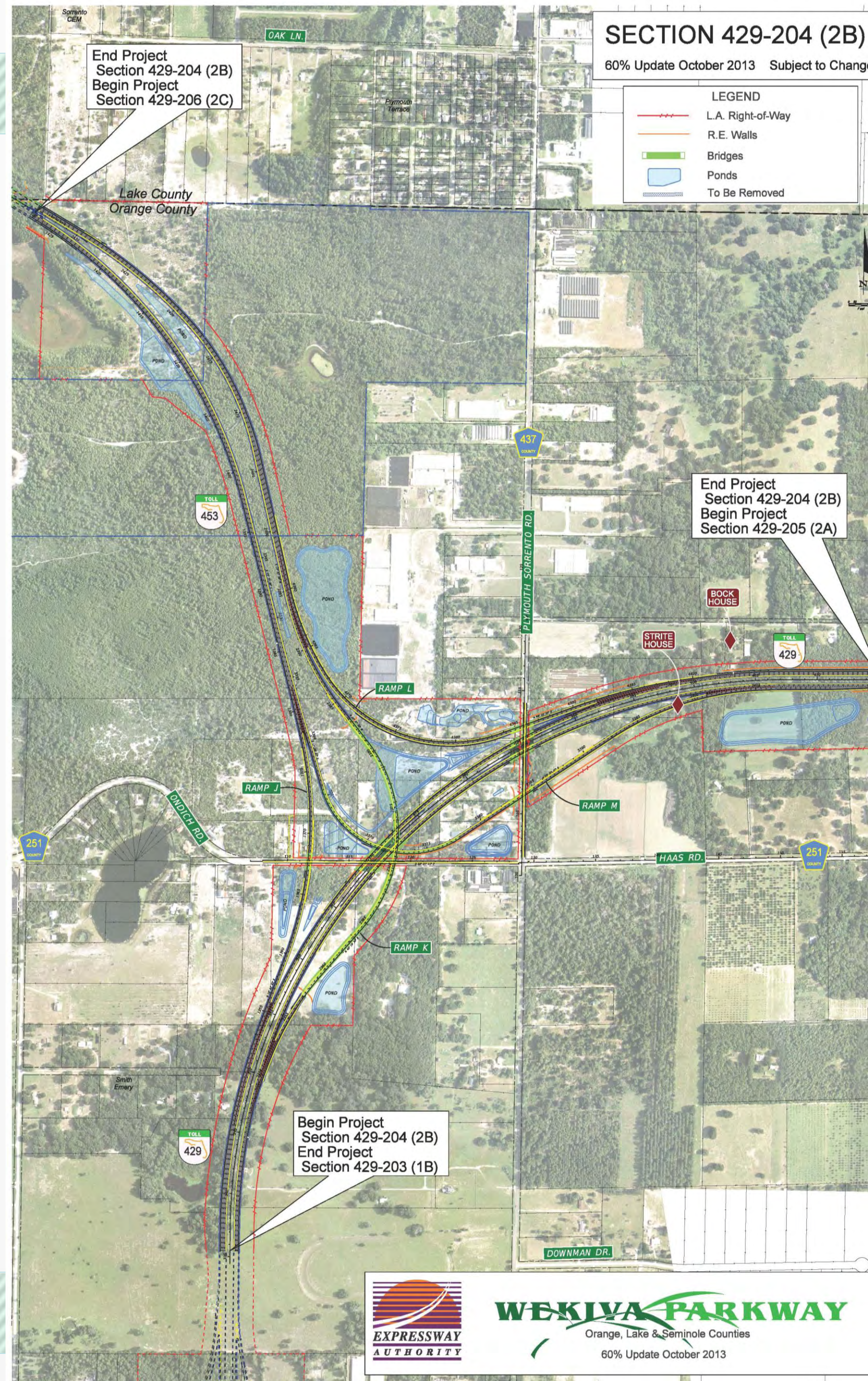
**OOCEA SECTION**



Lake Apopka

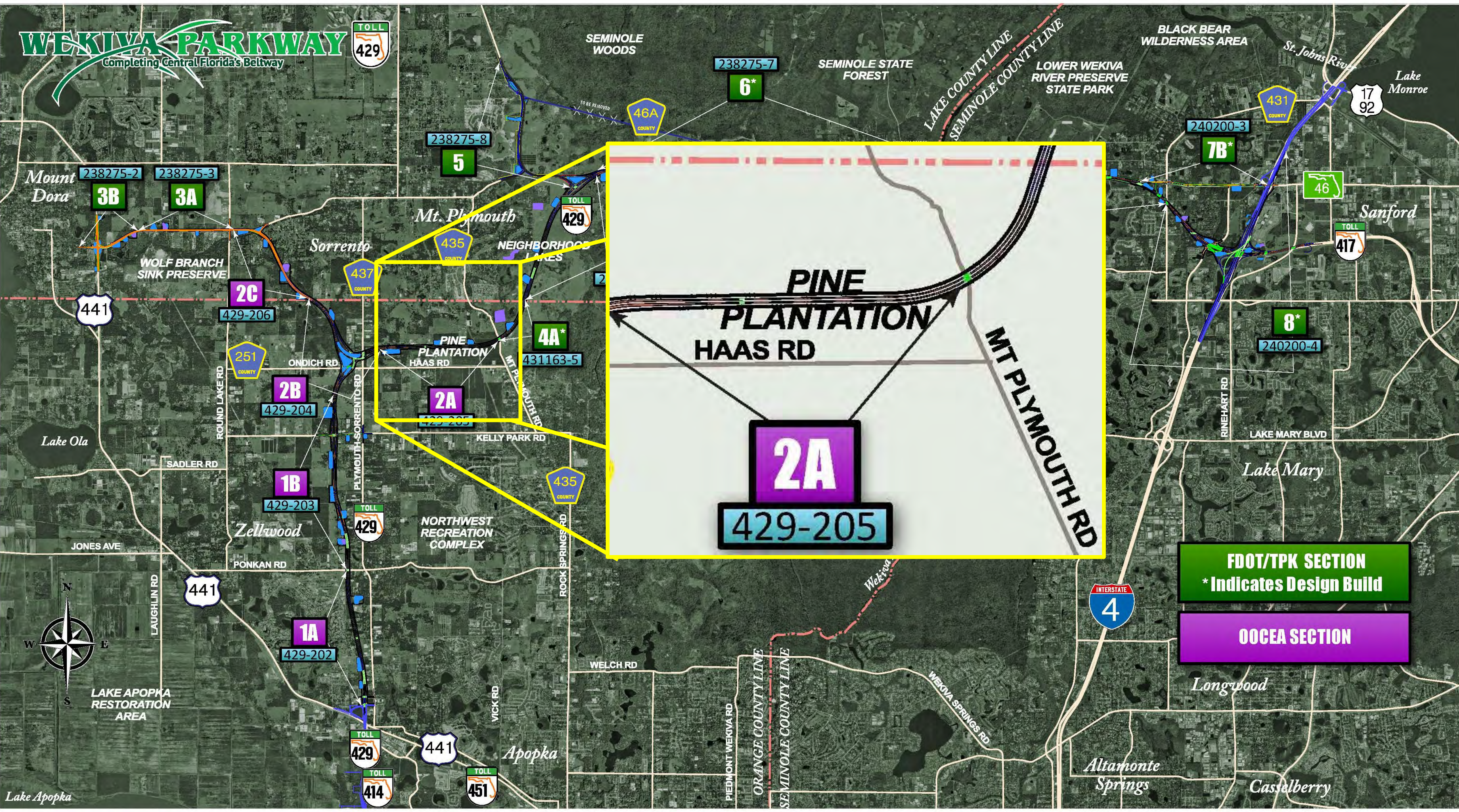
# Section 2B

Systems Interchange:  
Northwest of Kelly Park Rd  
& Plymouth Sorrento Rd



# WEKIVA PARKWAY

Completing Central Florida's Beltway



**PINE PLANTATION**  
**HAAS RD**

**2A**  
**429-205**

**MT PLYMOUTH RD**

**FDOT/TPK SECTION**  
\* Indicates Design Build

**OOCEA SECTION**

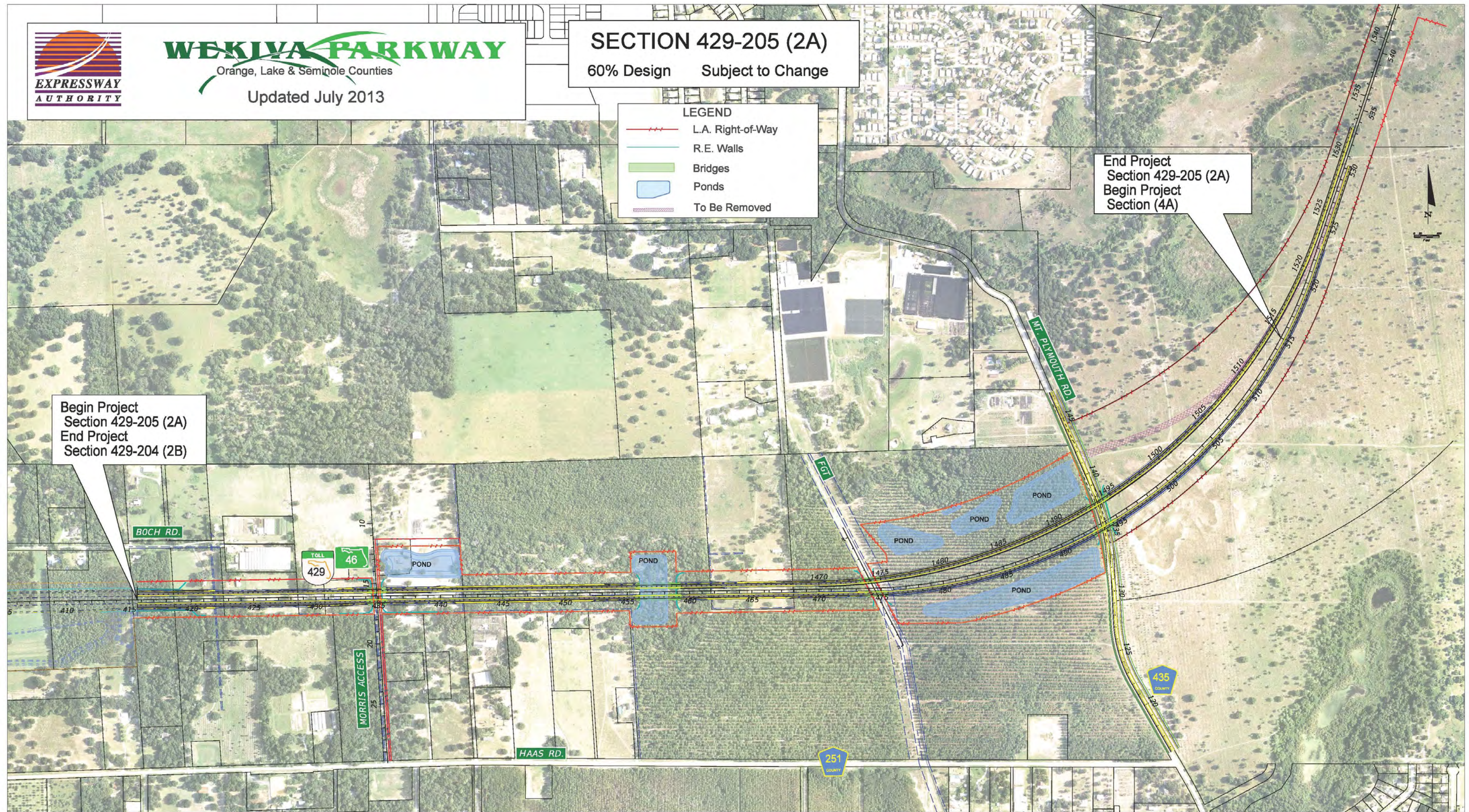


Lake Apopka



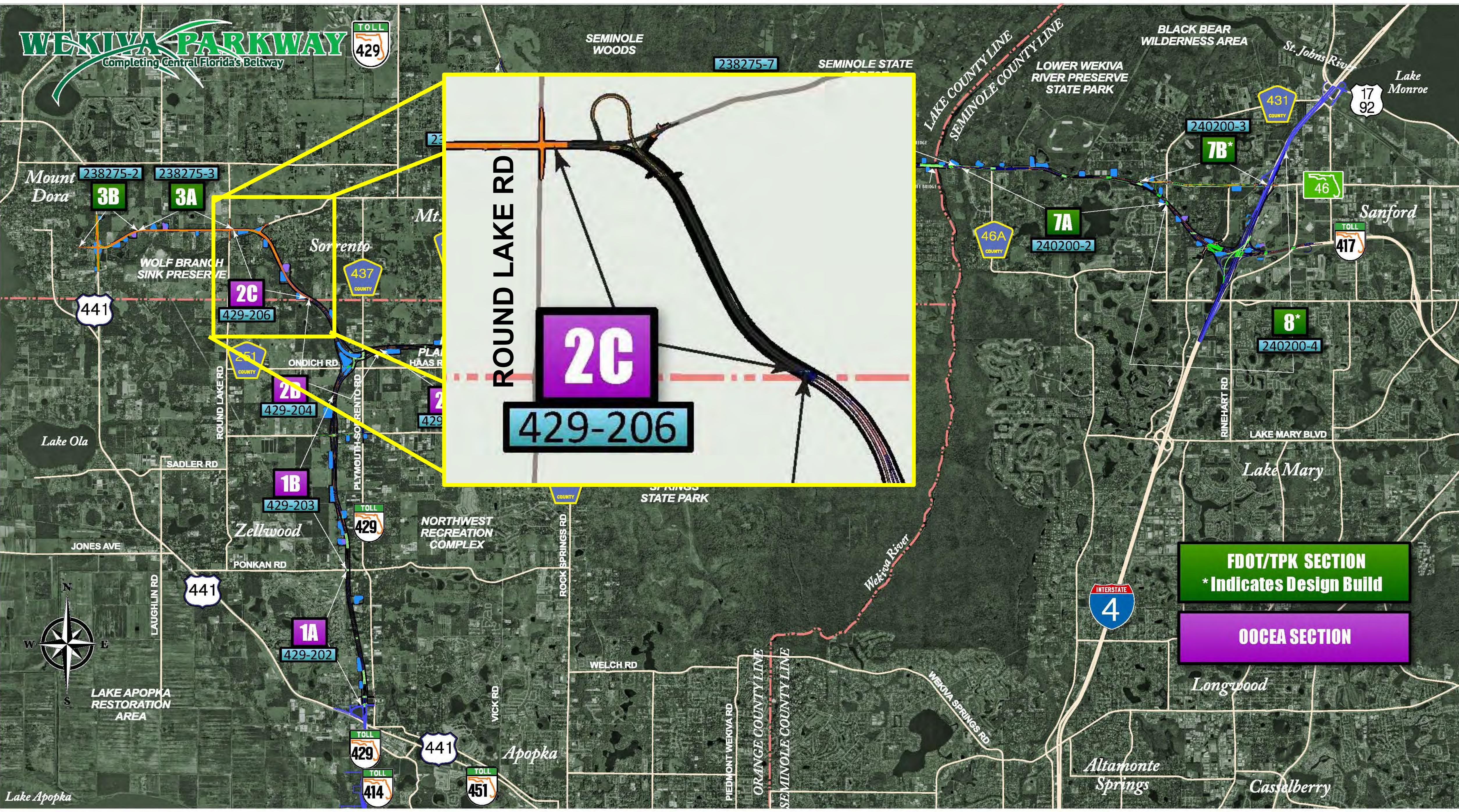
# Section 2A

From East of  
Plymouth  
Sorrento Rd to  
Mt. Plymouth  
Rd (CR 435)



# WEKIVA PARKWAY

Completing Central Florida's Beltway



**ROUND LAKE RD**

**2C**

**429-206**

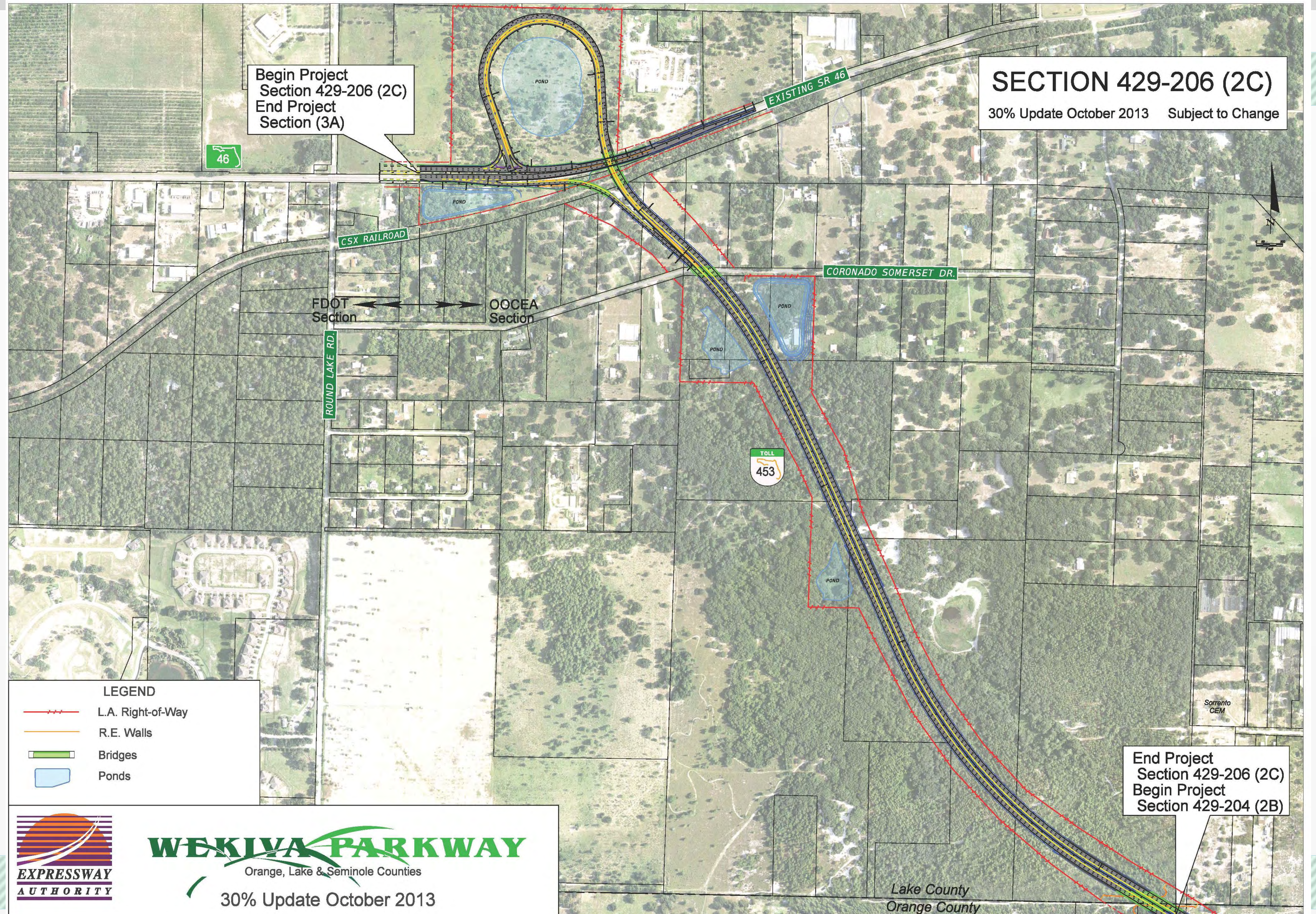
**FDOT/TPK SECTION**  
\* Indicates Design Build

**OOCEA SECTION**



# Section 2C

County Line to SR 46  
East of Round Lake Rd



# Expressway Authority

## Section 2 Schedule

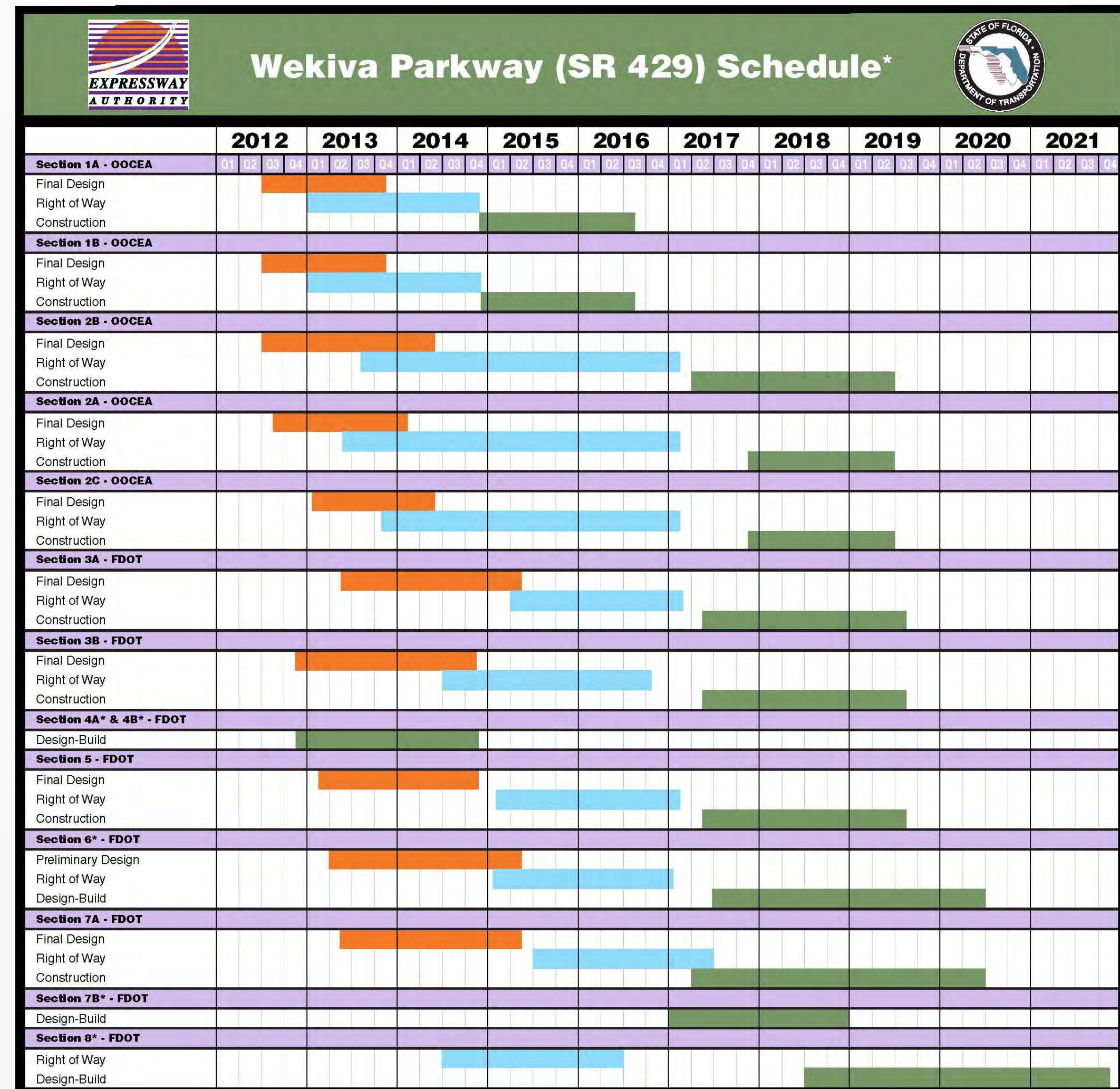
| PROJECT PHASE            | SCHEDULE    |
|--------------------------|-------------|
| Design                   | 2012 – 2014 |
| Right-Of-Way Acquisition | 2013 – 2015 |
| Construction             | 2017 – 2019 |

Right of Way Acquisition: Deborah Keeter, ROW Coordinator  
407-806-4183  
deborah.keeter@atkinsglobal.com



The Overall Wekiva Parkway Schedule is available for review at tonight's meeting.

Please keep in mind that schedules are subject to change.



For More Information:

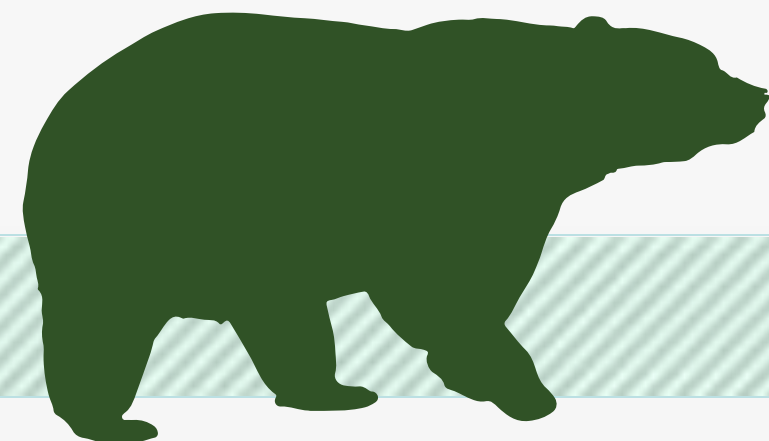
Mary Brooks

Public Involvement Coordinator

C: 407-694-5505

E: [Info@wekivaparkway.com](mailto:Info@wekivaparkway.com)

W: [www.wekivaparkway.com](http://www.wekivaparkway.com)



**WEKIVA PARKWAY**  
Completing Central Florida's Beltway

**TOLL 429**

HOME | PROJECTS | COCEA PROJECTS | PROJECTS BY COUNTY | PROJECT HISTORY | FAQ | CONTACT US

**WELCOME**

On behalf of the Florida Department of Transportation and the Orlando-Orange County Expressway Authority, thank you for your interest in the Wekiva Parkway design and construction projects. The Wekiva Parkway (State Road 429) is a cooperative effort between these agencies and the Florida's Turnpike Enterprise.

The Wekiva Parkway (SR 429) would connect to SR 417, completing the beltway around northwest metropolitan Orlando. This estimated \$1.5 billion project includes \$500 million of non-toll road improvements including:

- Building seven (7) miles of four- and six-laning of SR 46 in Lake and Seminole Counties
- Rebuilding the US 441/SR 46 interchange in Mount Dora
- Relocating the CR 46A connection to SR 46 to provide improved wildlife connectivity and additional local road system benefits

[Click here](#) to view the overall project schedule. Please understand schedules are subject to change due to a host of variables.

**WEKIVA PARKWAY PROJECT SECTION MAP**

Click on a Section Number for Project Details.

**Click here to view larger map**

The 25-mile tolled expressway will provide travel alternatives and relieve US 441, SR 46 and other area roads of traffic congestion resulting from growth and travel between Orange, Lake and Seminole Counties.

Authorized in 2004 by the Wekiva Parkway and Protection Act (Chapter 369, Part III, F.S.), this expressway has been heralded as a shining example for transportation planning through an environmentally sensitive area. Development of the Wekiva Parkway has included setting aside more than 3,400 acres of

**LATEST NEWS**

Click on text for details

**August 2013**  
COCEA Reaches 60% Design Plans on Section 2A

**July 2013**  
FDOT Kicks Off Design for Section 7A

**July 2013**  
Gov. Scott Kicks Off Wekiva Parkway - July 10, 2013

**July 2013**  
150 Attend Section 3A & 3B Public Meeting Open House - July 11, 2013

**June 2013**  
Nearly 200 Attend FDOT Section 8 Public Meeting - June 11, 2013

**May 2013**  
Lake Co. Commissioners Adopt Recommended CR 46A Alignment

**PUBLIC MEETING - Sections 3A & 3B Preliminary Design Open House Reop**

**PROJECT DOCUMENTS**

**PRESENTATIONS**

**PRE 88 RELEASES**

[Add More](#)

**CONTACT US**

Mary Brooks  
Public Information Officer  
[Info@wekivaparkway.com](mailto:Info@wekivaparkway.com)  
407-694-5505

twitter

facebook

# WEKIWA PARKWAY

Completing Central Florida's Beltway



## Thank You!

