



A Regional Transportation Solution

**Section 4 Opening
Jan. 20, 2016**



WEKIWA PARKWAY

Completing Central Florida's Beltway



OPEN

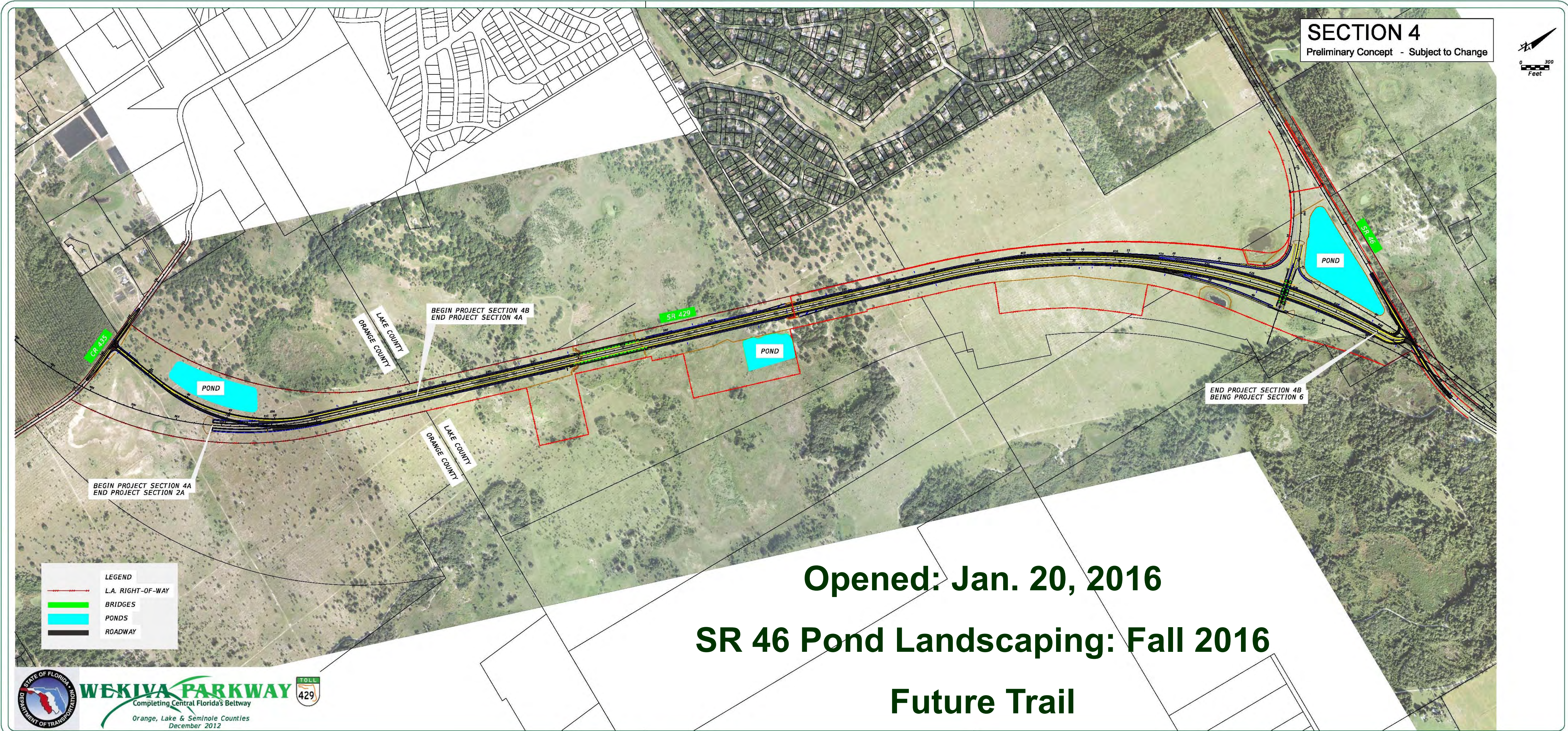
Years Indicate Section Openings

FDOT/TPK SECTIONS
* Indicates Design Build

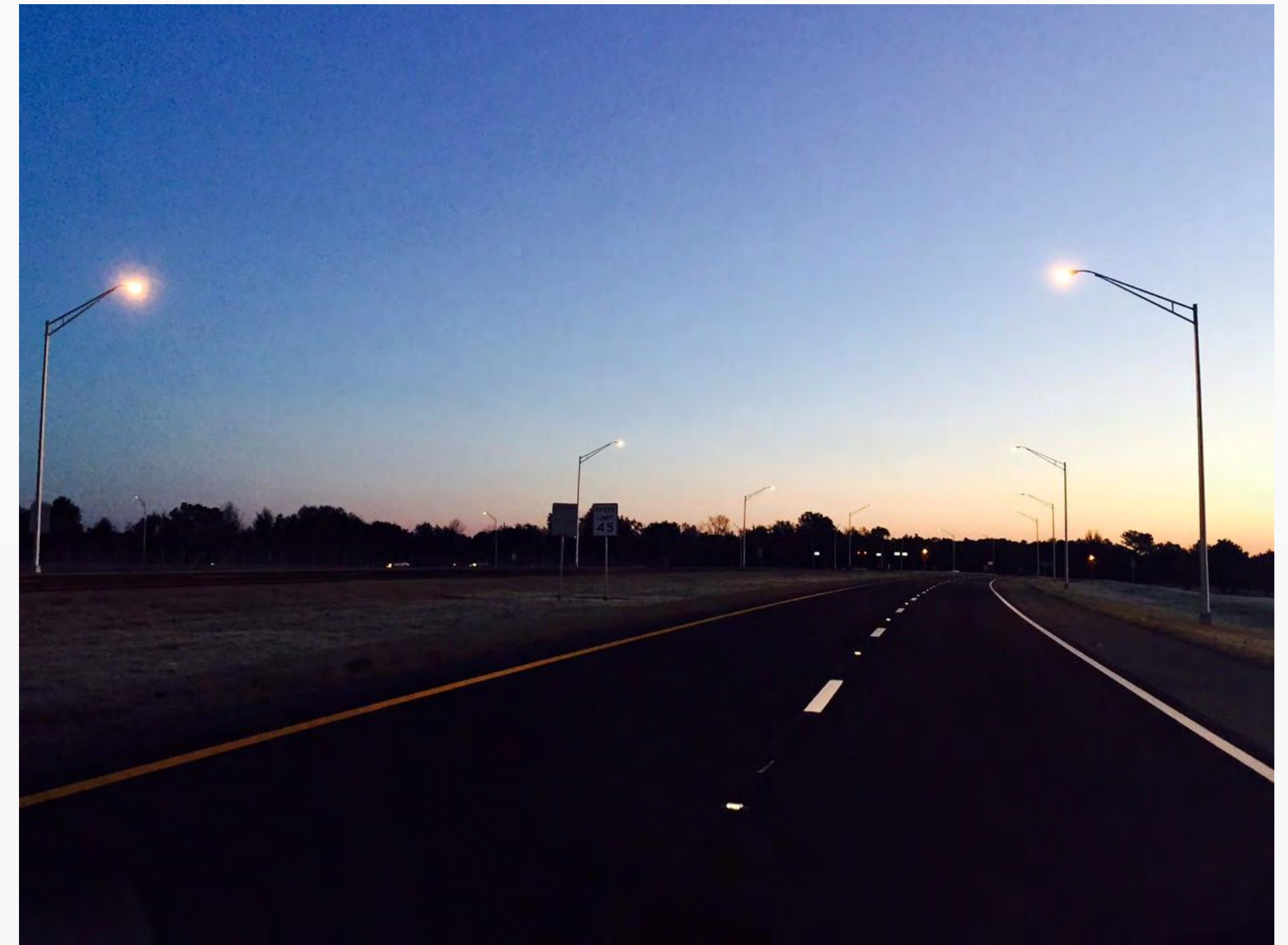
CFX SECTIONS



Section 4A & 4B



Sections 4A & 4B



Sun rises on the opening day on the parkway.

Sections 4A & 4B



Bat houses show as silhouettes in the roseate sky at sun rise.

Section 4 Opening

US
Congressman
Daniel Webster
joins FDOT staff
in opening the
ramp.



Section 4 Opening



Sections 4A & 4B



One of the first vehicles to use the Wekiva Parkway!

Within 4 hours of the opening, more than 260 vehicles used this 3.14 mile stretch.

Sections 4A & 4B



Sections 4A & 4B



Toll-By-Plate is a toll collection method that takes a photo of a vehicle's license plate as it travels through an FDOT tolling location. It then mails a monthly bill for the tolls, **plus a \$2.50 administrative charge**, to the registered owner of the vehicle.

What's Next?

- **CFX Construction Starts in 2016:**
 - **Sections 2A (August) & 2C (May)**
- **CFX Section 1 Opens: Spring 2017**
- **Next FDOT Construction: 2017 (Sections 3, 5 & 6)**



Other Recent News:

- **CFX Section 2B Construction Started: Jan. 4, 2016**
- **FDOT Industry Forum: Jan. 26, 2016**



For More Information:

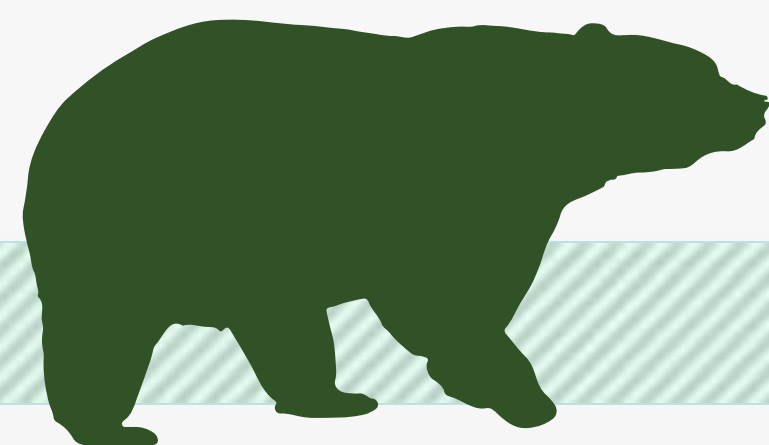
Mary Brooks

Public Information Officer

C: 407-694-5505

E: Info@wekivaparkway.com

W: www.wekivaparkway.com



The screenshot shows the Wekiva Parkway website with the following sections:

- CONSTRUCTION UPDATES:** Welcome to your construction information source for the Wekiva Parkway, the 25-mile toll road that will complete Central Florida's Beltway. Here you can find out about construction schedules, lane and road closures, and detours. You can also view the latest community presentations, or request an update for your group. Just click on the appropriate button below.
- SCHEDULE:** Check out the latest construction schedule for the Wekiva Parkway. Includes a Gantt chart showing construction progress from February 2013 to early 2016.
- ALERTS:** Prepare for your travel by finding out the latest news on lane and road closures and more. Includes an image of orange traffic cones.
- COMMUNITY PRESENTATIONS:** Schedule a project update for your community or group. Check out the latest presentations on the Wekiva Parkway. Includes an image of a community meeting.
- VISUAL GALLERY:** Want to see the latest photos and video on how the Wekiva Parkway is taking shape? CLICK HERE! Includes an image of a bridge under construction.
- ALERTS (Right Sidebar):** Click on link for details. September 2015: CPX Section 1A, SR 429 Connector Road Lane Closing. August 2015: CPX Section 1A, SR 429 Connector Road Lane Closing. August 2015: CPX Section 1A, Nighttime SR 429 Ramp Closure to Westbound Connector Road. August 2015: CPX Section 1B Work Off with Gopher Tortoise Relocation. August 2015: New Photos of FDOT Sections 4A & 4B. August 2015: Bridge Pile Driving to Begin on CPX Section 1A. August 2015: CPX Section 1A, Be Alert for Intermittent Lane Closures on SR 429 Connector Road. July 2015: CPX Section 1A, Be Alert for Turn Lane Closure on SR 429 Connector Road. July 2015: Construction Will Underway on CPX Section 1A. June 2015: CPX Begins Building Section 1A on June 5. June 2015: Intermittent Flagging Operations For Section 4 on SR 429.
- CONTACT US (Right Sidebar):** Mary Brooks, Public Information Officer, Info@wekivaparkway.com, 407-694-5505. Includes an image of a bridge.

twitter

facebook