

WEKIWA PARKWAY

Completing Central Florida's Beltway



A Regional Transportation Solution

Sections 5 & 6 Design Update
Public Information Meeting – Open House
April 7, 2015



CENTRAL
FLORIDA
EXPRESSWAY
AUTHORITY



Florida Department of Transportation

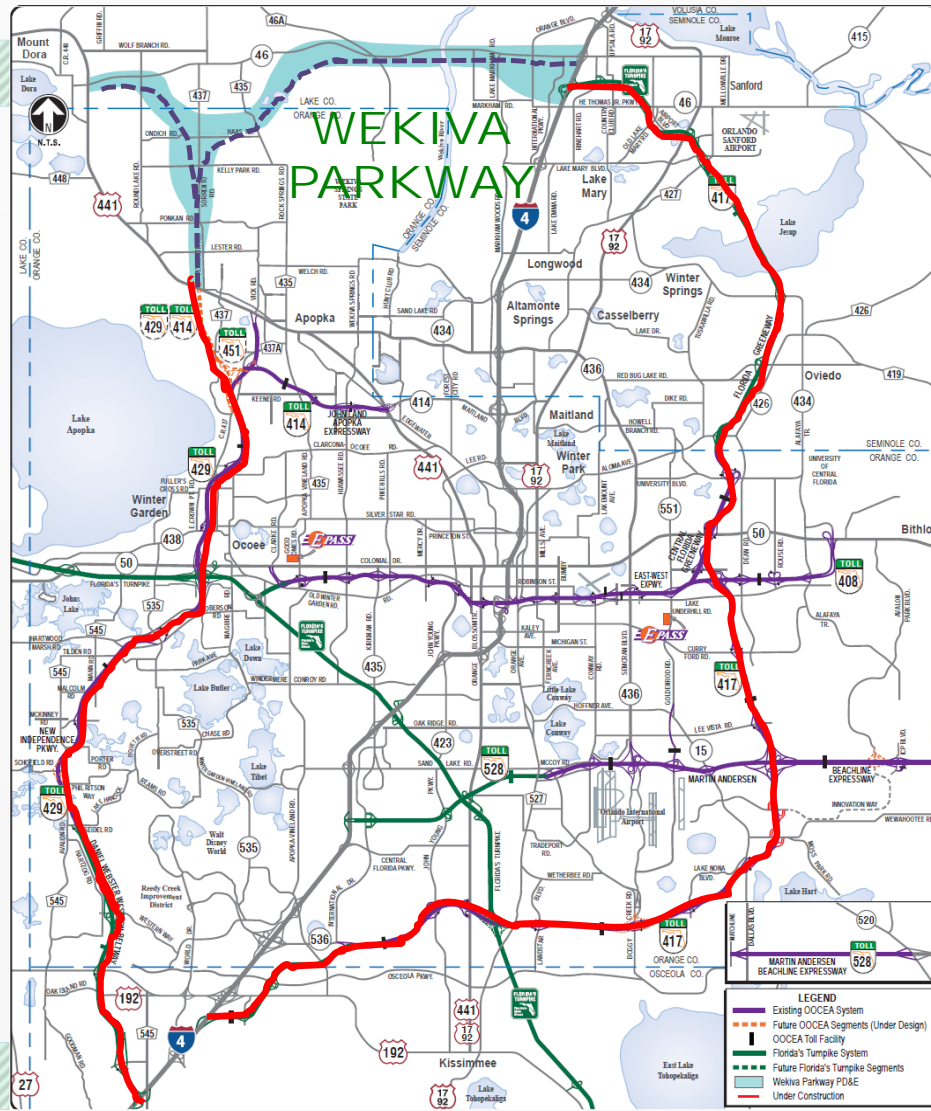
This meeting and project are being conducted without regard to race, color, national origin, age, sex, religion, disability or family status. Persons wishing to express their concerns relative to FDOT compliance with Title VI may do so by contacting:

Jennifer Smith
FDOT District Five Title VI Coordinator
719 South Woodland Boulevard
Deland, Florida 32720
386-943-5367
Jennifer.taylor@dot.state.fl.us

Jacqueline Paramore
State Title VI Coordinator
605 Suwannee Street, Mail Station 65
Tallahassee, FL 32399-0450
850-414-4753
Jacqueline.paramore@dot.state.fl.us

All inquiries or complaints will be handled according to FDOT procedure and in a prompt and courteous manner.





WEKIVA PARKWAY



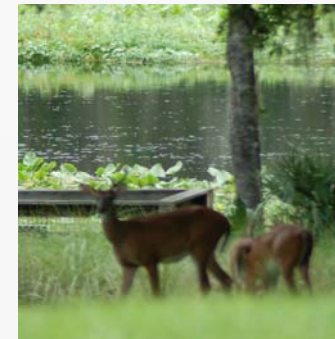
**CENTRAL
FLORIDA
EXPRESSWAY
AUTHORITY**



WEKIVA PARKWAY

Protecting Nature

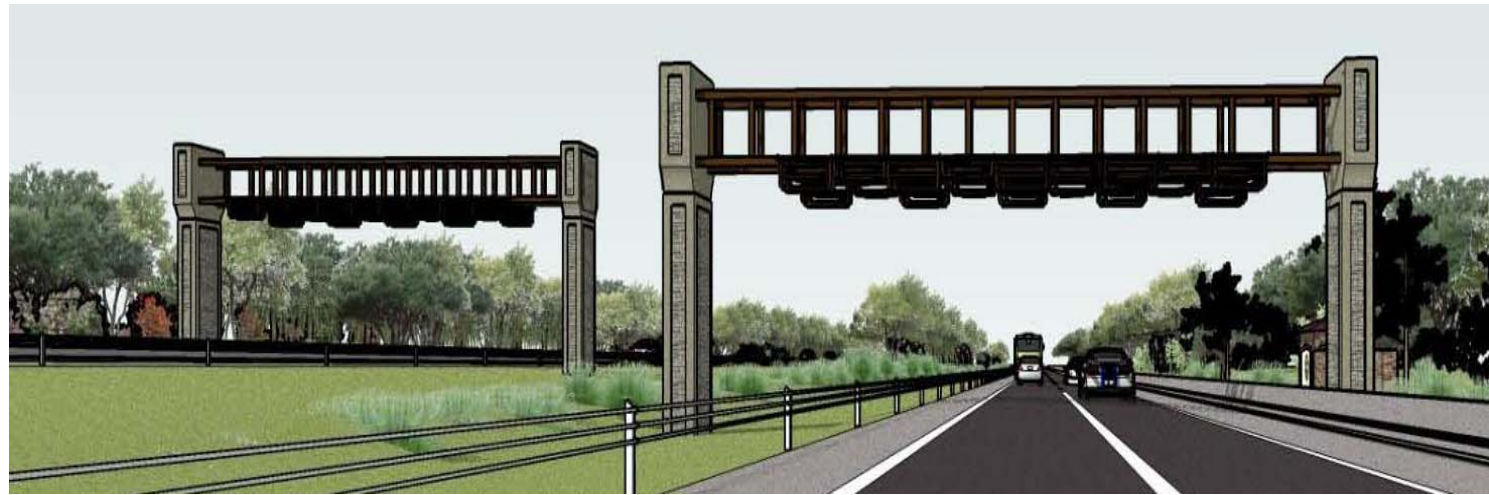
- **Wekiva River: Outstanding Florida Water & National Wild & Scenic River**
- **Authorized by the 2004 Wekiva Parkway and Protection Act**
 - **Setting Aside More than 3,400 Acres for Conservation**
 - **Largely Elevated to Reduce Accidents Between Vehicles & Wildlife**
 - **Several Wildlife Bridges**
 - **Limited Interchanges (Curb Development)**



WEKIVA PARKWAY

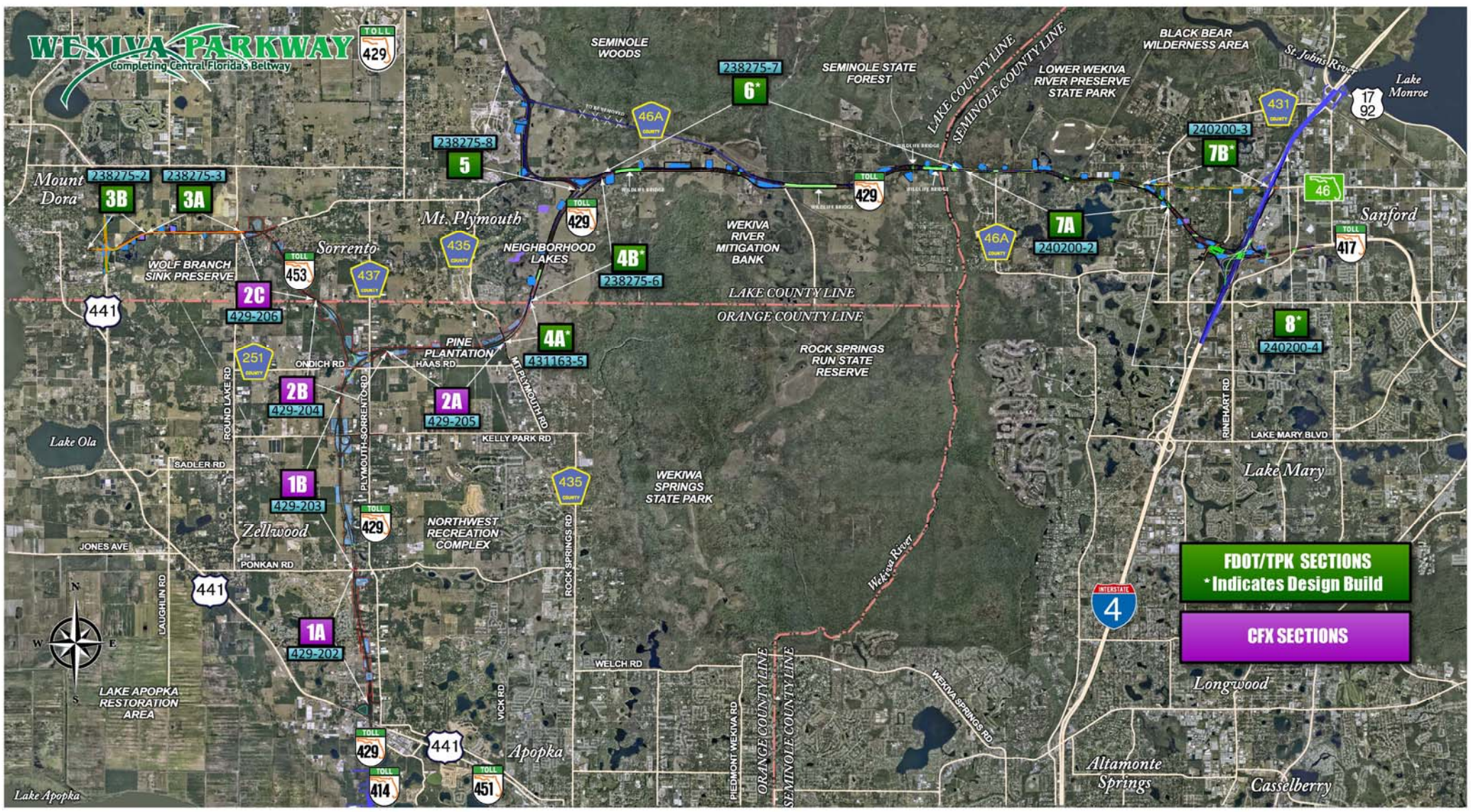
All Electronic Tolling (AET)

- First in Central Florida
- No Toll Plazas – No Cash
- Enhances Safety
- Maximizes Convenience
- Reduces Noise & Pollution
- Improves Mobility
- Saves Money
- AET Info on Website



WEKIVA PARKWAY

Completing Central Florida's Beltway



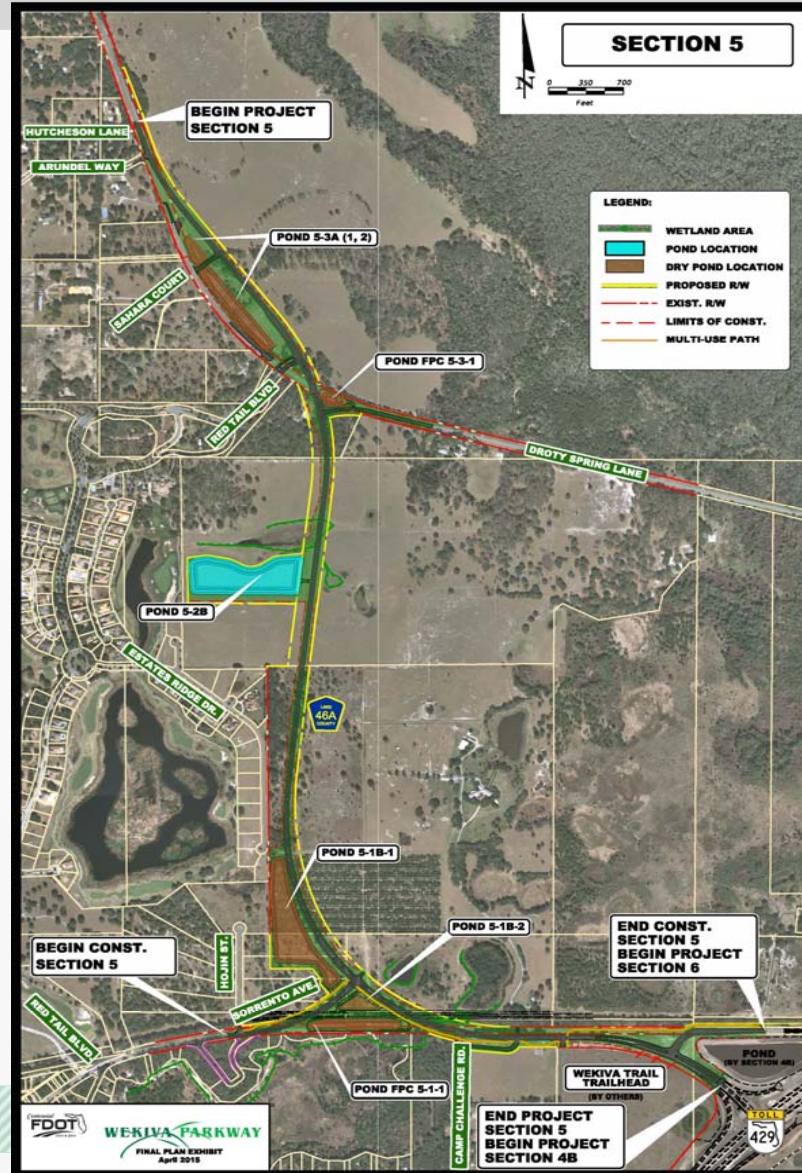
FDOT/TPK SECTIONS
* Indicates Design Build

CFX SECTIONS

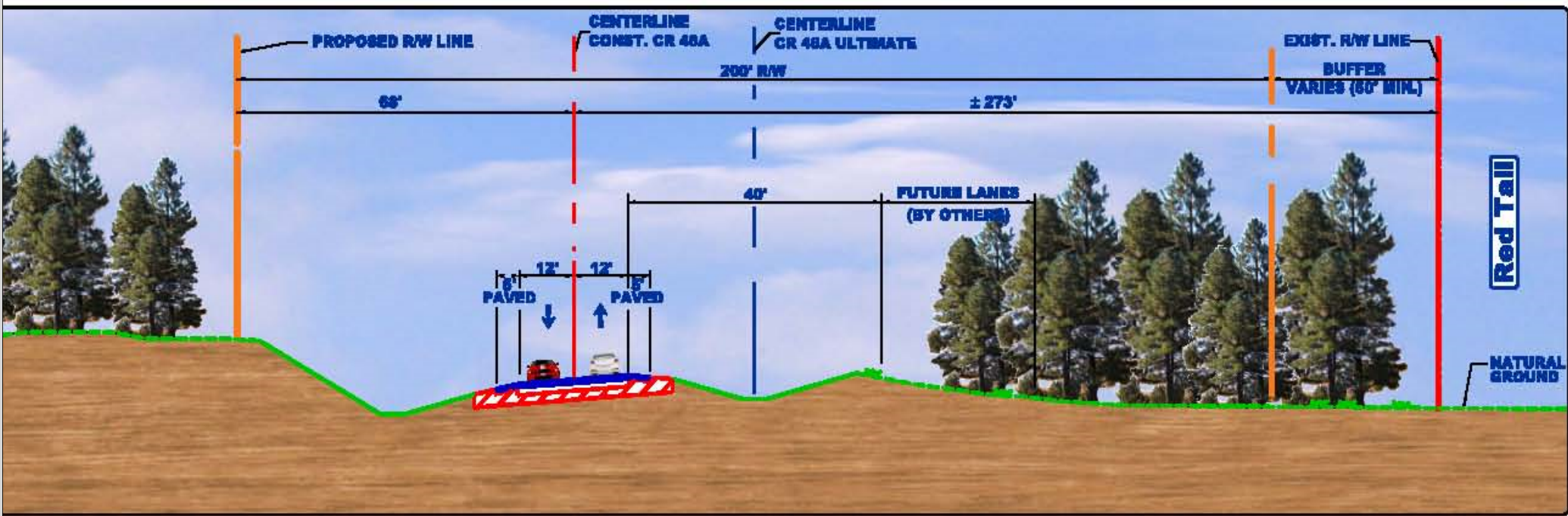
Sections 5 & 6 Design Projects



Section 5

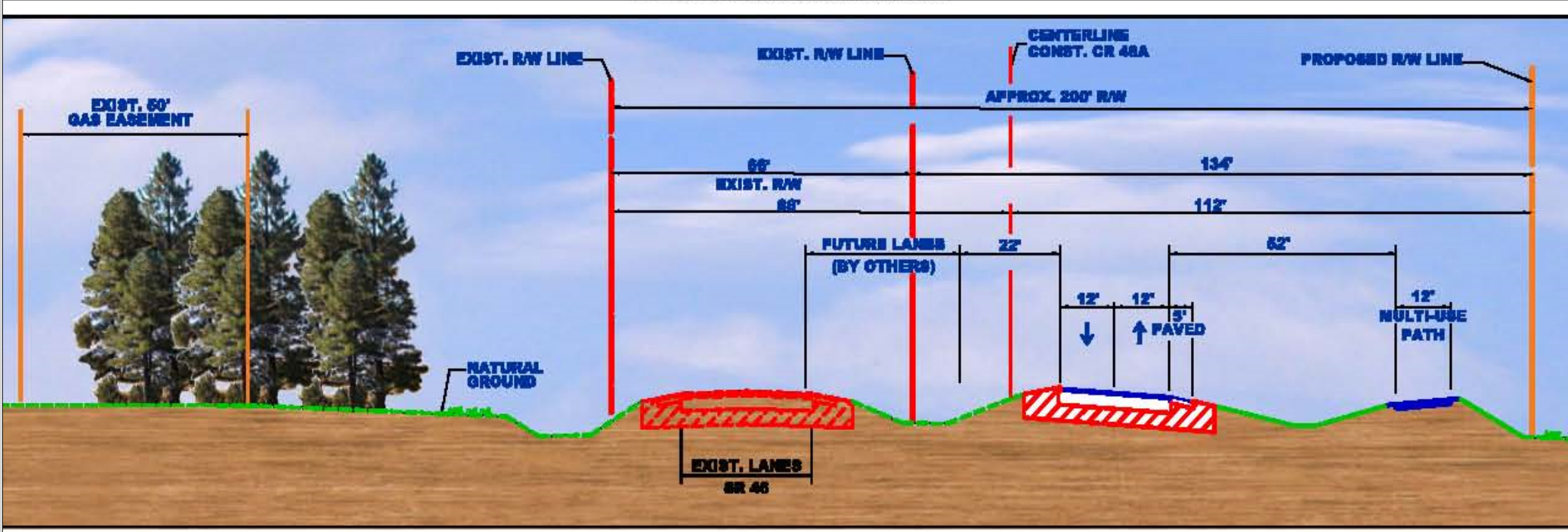


Section 5 – Typical Section Arundel Way to Sorrento Ave

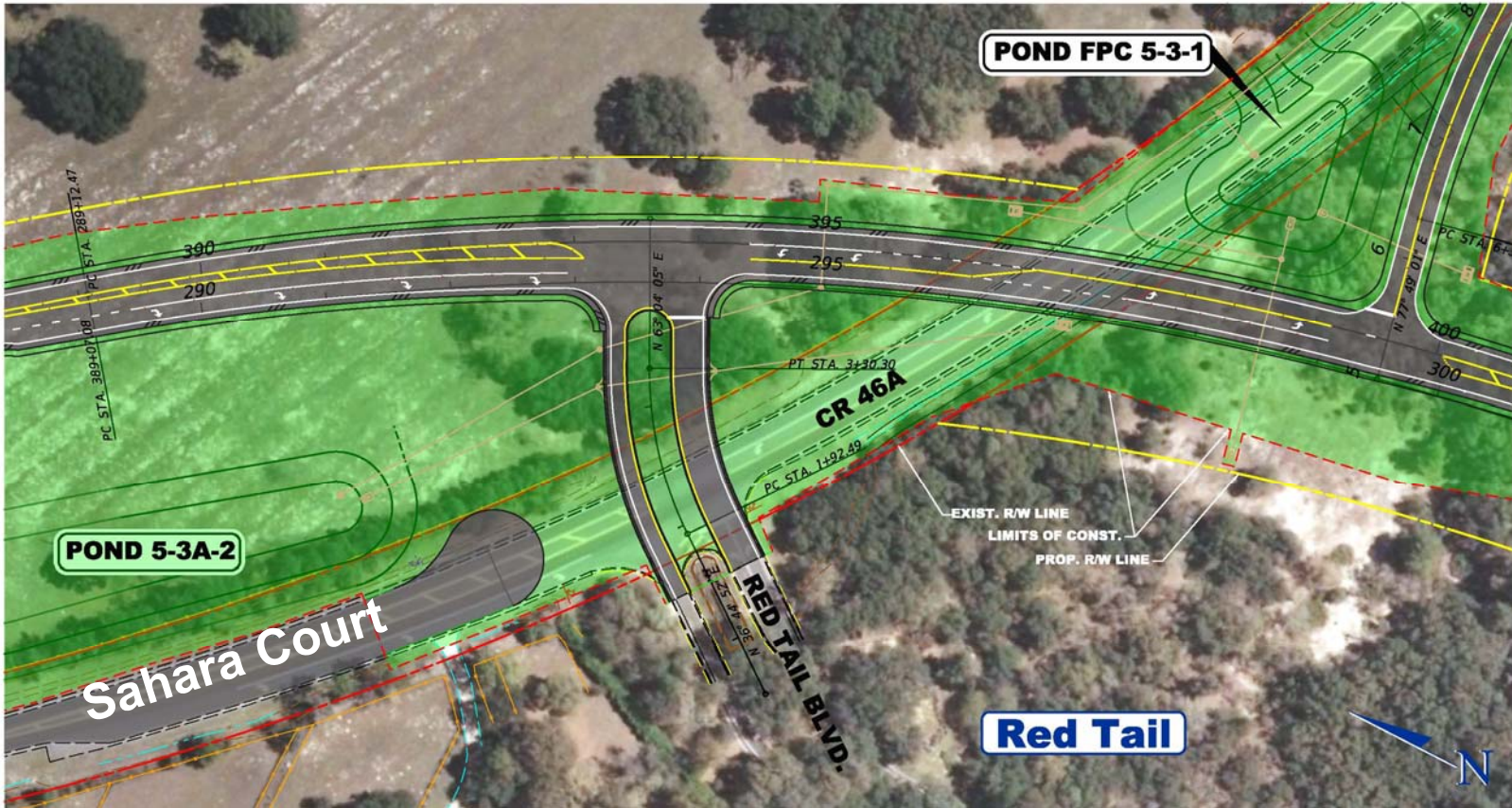


TYPICAL SECTION
From Arundel Way to Sorrento Avenue

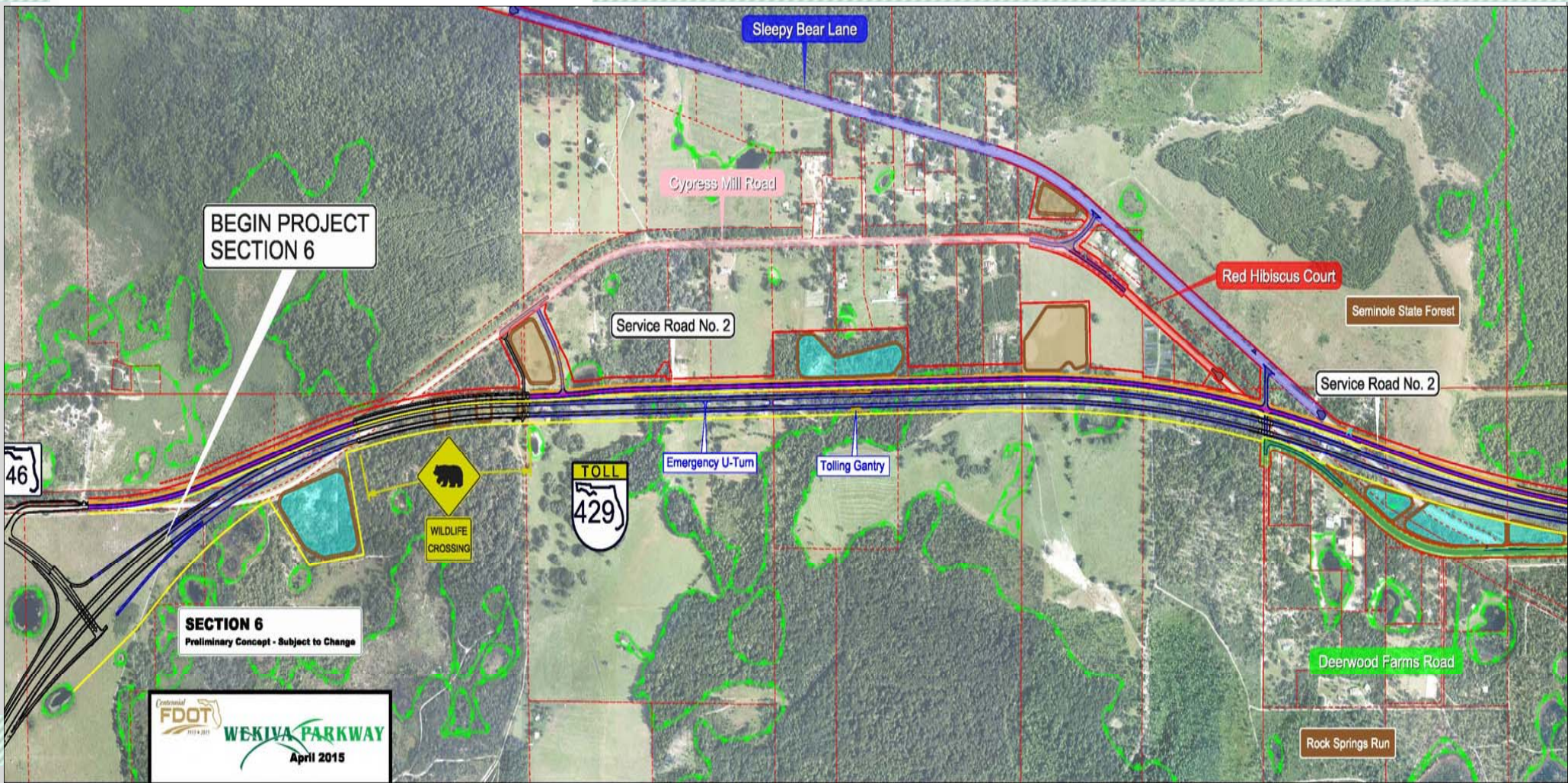
Section 5 – Typical Section Sorrento Ave to Wekiva Trailhead



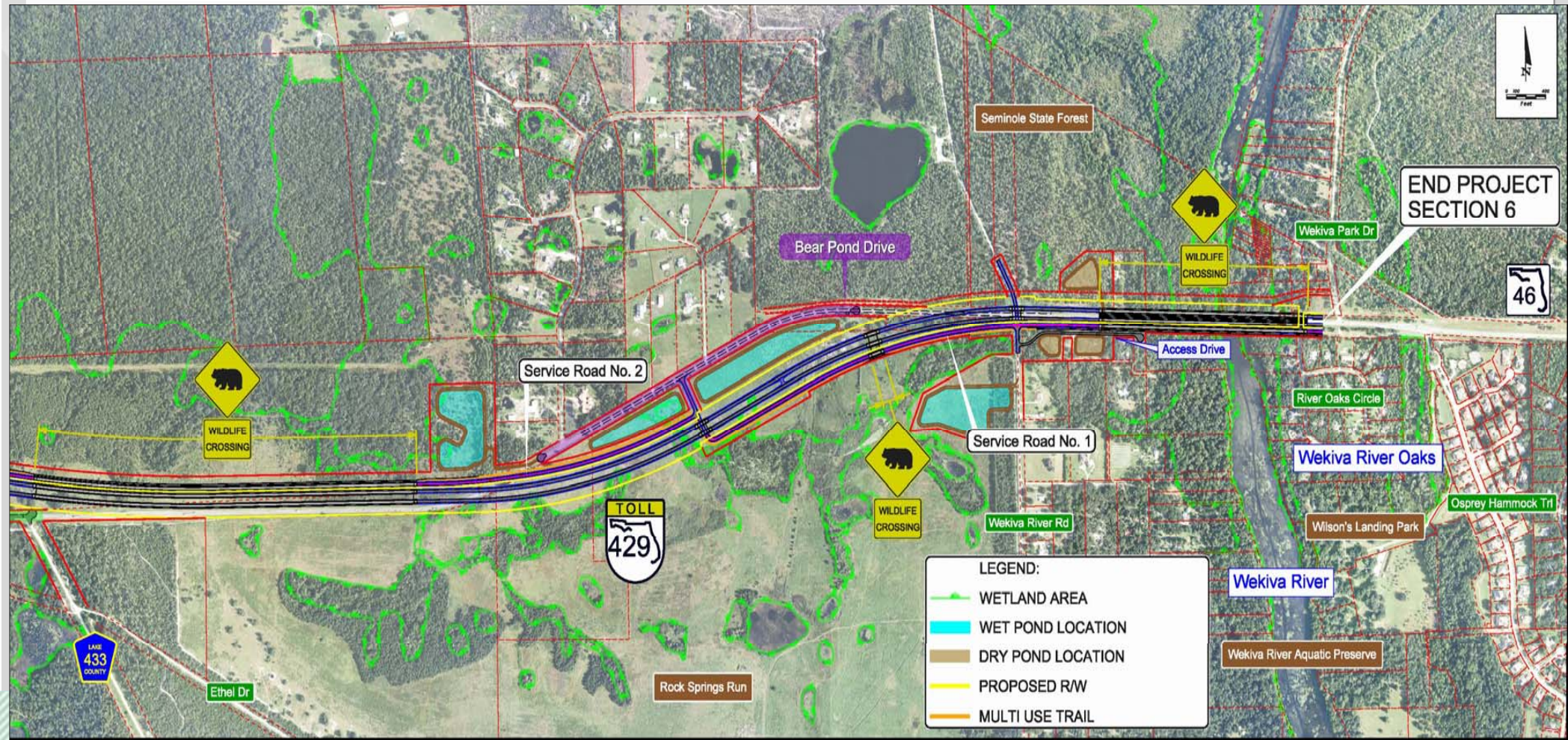
Section 5 Red Tail North Entrance



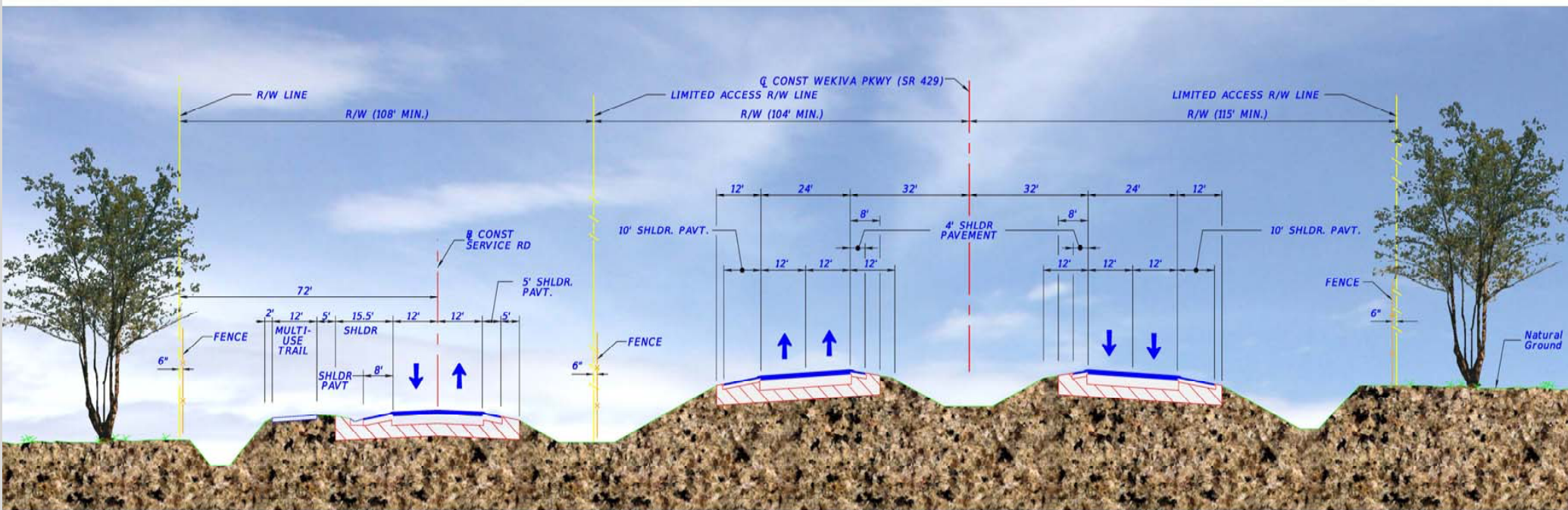
Section 6 - West End



Section 6 - East End



Section 6 – Typical Section



Site Features



Wekiva River

Seminole State Forest

Rock Springs Run State Reserve

SR 46 Wekiva River Bridge

Wekiva River Oaks

Lower Wekiva Aquatic Preserve State Park

**Katie's Landing Park
1 Mile from Bridge**

**Wilson's Landing Park
0.5 Miles from Bridge**

**Foxspur
Estates at Wekiva Park**

Wekiva Park Drive

Wekiva River Rd

Peachtree Lane

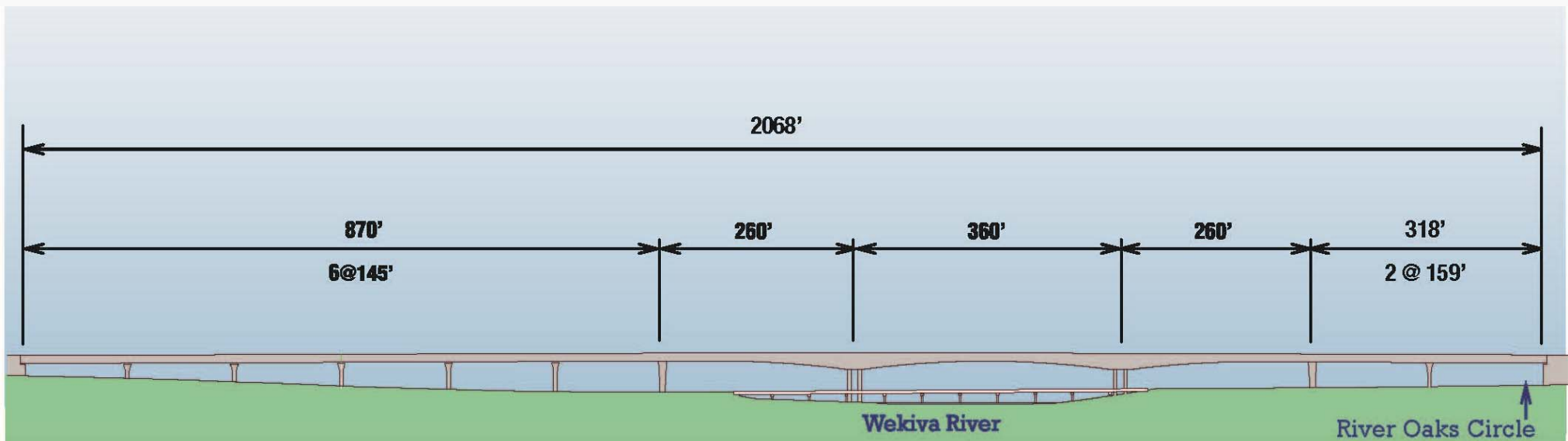
Wekiva River Bridge - Profile



**Wekiva River
Bridges –
River User's
View**



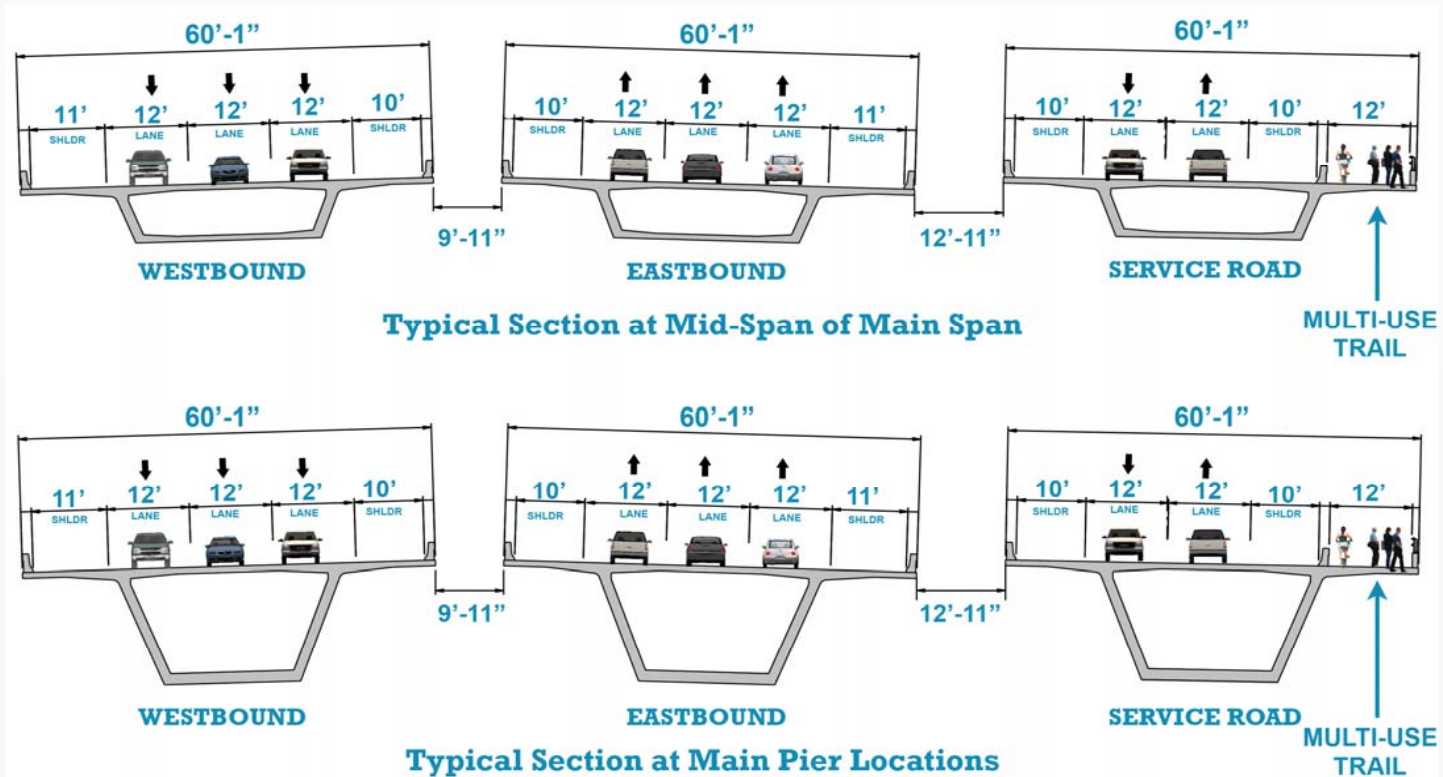
Wekiva River Bridge - Layout



Proposed Bridge Layout

New span configuration with additional bridge spans on east end

Wekiva River Bridge - Cross Sections



***Showing ultimate configuration.
Parkway bridges will have 2 lanes in each direction
for initial configuration.***

Wekiva Parkway Trail

10 Miles

Concurrent Design: Sections 5, 6 & 7A

✓ **2017-2021**

Separate Design: Sections 4A & 4B

✓ **2017-2021**

Connections:

✓ **West Orange Trail Extension**

✓ **Lake-Wekiva Trail (Planned)**

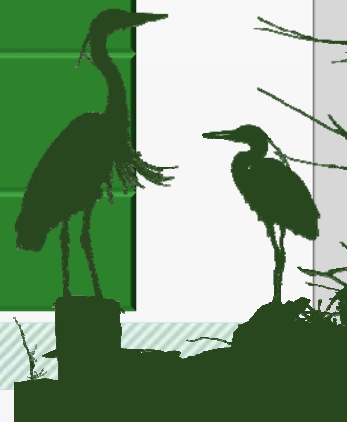
✓ **Seminole-Wekiva Trail Extension**



WEKIVA PARKWAY

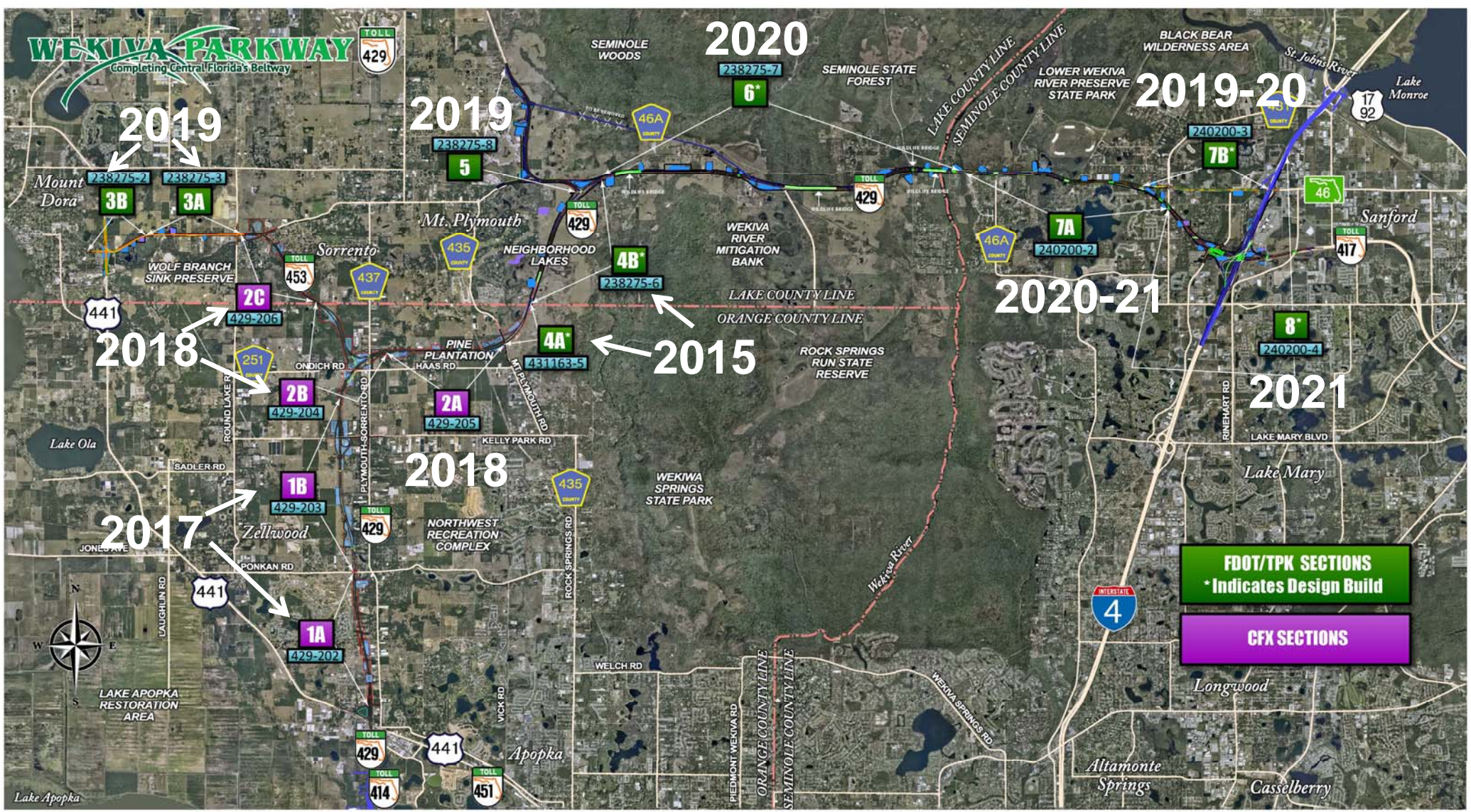
Sections 5 & 6 Costs & Schedule

PROJECT PHASE	COST	SCHEDULE
Design	\$ 10 Million	2013 – 2015
Right-Of-Way Acquisition	\$ 50 Million	2015 – 2017
Procurement		2017
Construction	\$ 227 Million	2017 - 2020
TOTAL	\$ 287 Million	



WEKIVA PARKWAY

Completing Central Florida's Beltway



FDOT/TPK SECTIONS
* Indicates Design Build

CFX SECTIONS





For More Information:

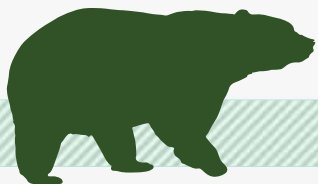
Mary Brooks

Public Involvement Coordinator

C: 407-694-5505

E: Info@wekivaparkway.com

W: www.wekivaparkway.com



The screenshot shows the Wekiva Parkway website with the following content:

- Header:** WEKIVA PARKWAY logo, "Completing Central Florida's Beltway", and Florida 429 shield.
- Navigation:** HOME, SECTIONS, PROJECT HISTORY, ALL ELECTRONIC TOLLING, CONSTRUCTION UPDATES, FAQ, CONTACT US.
- WELCOME:** A paragraph about the project's purpose and a list of key features:
 - Widening seven (7) miles of SR 46 in Lake and Seminole Counties
 - Rebuilding the US 44/SR 46 interchange in Mount Dora
 - Shifting the CR 46A connection to SR 46 so wildlife can move more safely between habitats
 - Building a multi-use trail along portions of the parkway in east Lake and Seminole counties
- Map:** A map of the project area with various sections highlighted in different colors. A callout box for "FOURTH SECTION - BAYHORN REGION DRIVE" is visible.
- PROJECT DOCUMENTS:** A list of documents including "PUBLIC MEETINGS - More than 275 Attend Sections 1A Public Workshop" and "PROJECT DOCUMENTS - Clean Cow HDA Finalization".
- CONTACT US:** Mary Brooks, Public Information Officer, Info@wekivaparkway.com, 407-694-5505.
- Footer:** HELPFUL LINKS (Central Florida Expressway Authority, Florida Department of Transportation, Florida 429) and FOLLOW US (Twitter, Facebook).

twitter

facebook

WEKIWA PARKWAY

Completing Central Florida's Beltway



Thank You!

This presentation will begin again shortly.

