



A Regional Transportation Solution

Sections 5 & 6 Preliminary Design
Public Information Meeting – Open House
April 29, 2014





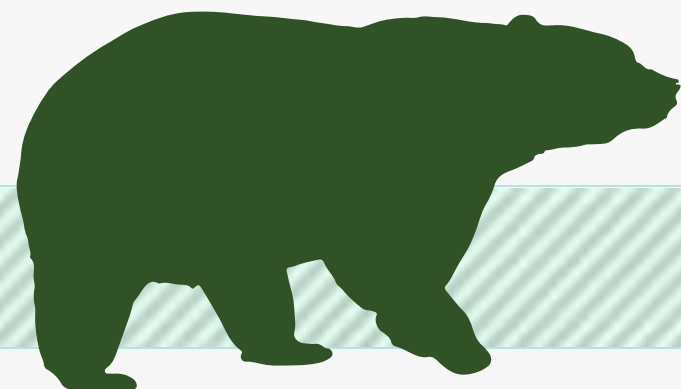
Florida Department of Transportation

This meeting and project are being conducted without regard to race, color, national origin, age, sex, religion, disability or family status. Persons wishing to express their concerns relative to FDOT compliance with Title VI may do so by contacting:

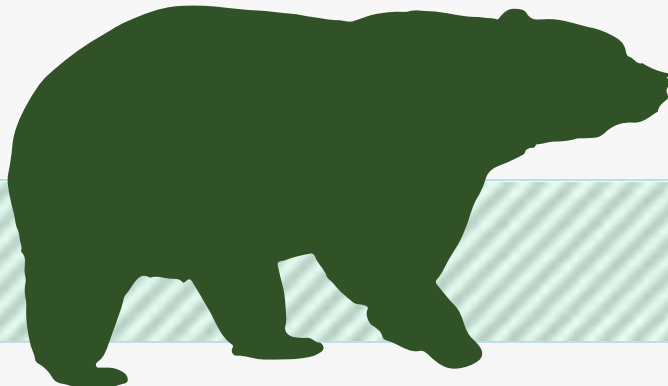
Jennifer Taylor
FDOT District Five Title VI Coordinator
719 South Woodland Boulevard
Deland, Florida 32720
386-943-5367
Jennifer.taylor@dot.state.fl.us

Jacqueline Paramore
State Title VI Coordinator
605 Suwannee Street, Mail Station 65
Tallahassee, FL 32399-0450
850-414-4753
Jacqueline.paramore@dot.state.fl.us

All inquiries or complaints will be handled according to FDOT procedure and in a prompt and courteous manner.



Funding Partners



WEKIVA PARKWAY



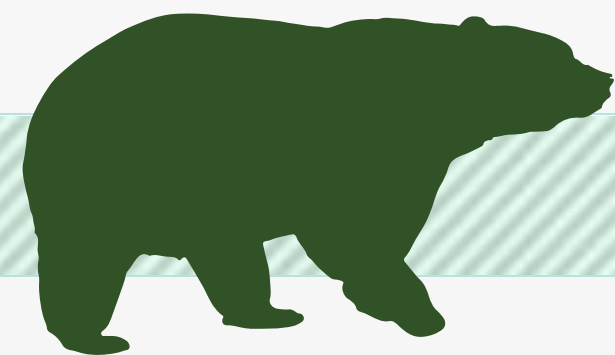
LEGEND

- Existing OOCEA System
- Future OOCEA Segments (Under Design)
- OOCEA Toll Facility
- Florida's Turnpike System
- Future Florida's Turnpike Segments
- Wekiva Parkway PD&E
- Under Construction



Protecting Nature

- **Wekiva River: Outstanding Florida Water & National Wild & Scenic River**
- **Authorized by the 2004 Wekiva Parkway and Protection Act**
 - **Setting Aside More than 3,400 Acres for Conservation**
 - **Largely Elevated to Reduce Accidents Between Vehicles & Wildlife**
 - **Several Wildlife Bridges**
 - **Limited Interchanges (Curb Development)**



All Electronic Tolling (AET)

- First in Central Florida
- No Toll Plazas (SUNPass, E-Pass or Toll by Plate)
- Improved Traffic
- Enhanced Safety
- Reduces Noise
- Toll Costs Pending



PROJECT ECONOMIC IMPACT

At an estimated cost of \$1.5 Billion for Engineering & Construction, the Wekiva Parkway is Projected to Provide:

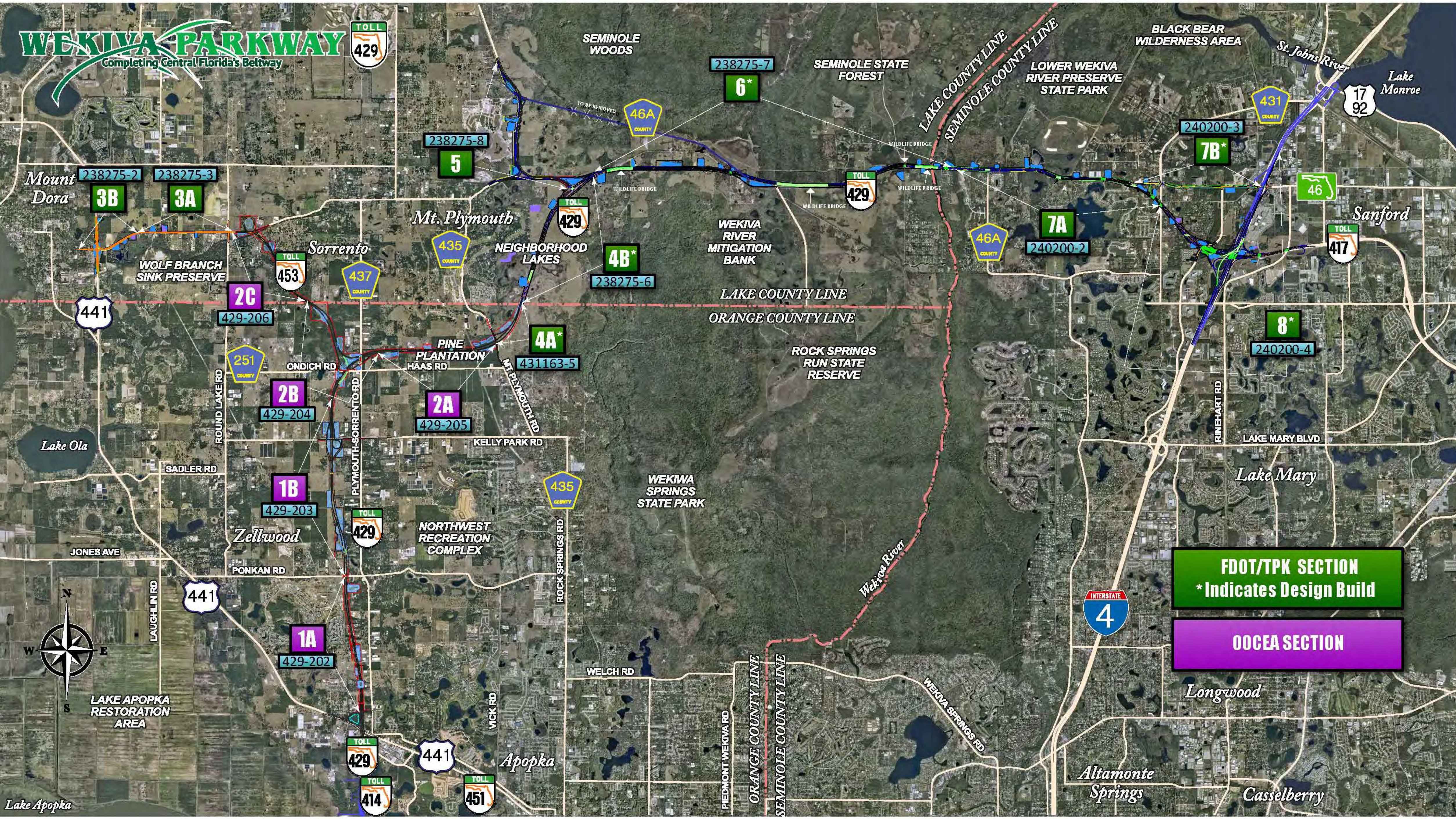
Construction Related Jobs	12,272
Supporting Industries Jobs	5,570
Induced Employment Jobs	17,983

***Estimated Total Jobs 35,825**

*Job Multiplier Source: Federal Highway Administration (FHWA) Employment Impacts of Highway Infrastructure Investment; Updated March 2010

WEKIWA PARKWAY

Completing Central Florida's Beltway



FDOT/TPK SECTION
* Indicates Design Build

OCEA SECTION





Wekiva Parkway (SR 429) Schedule*



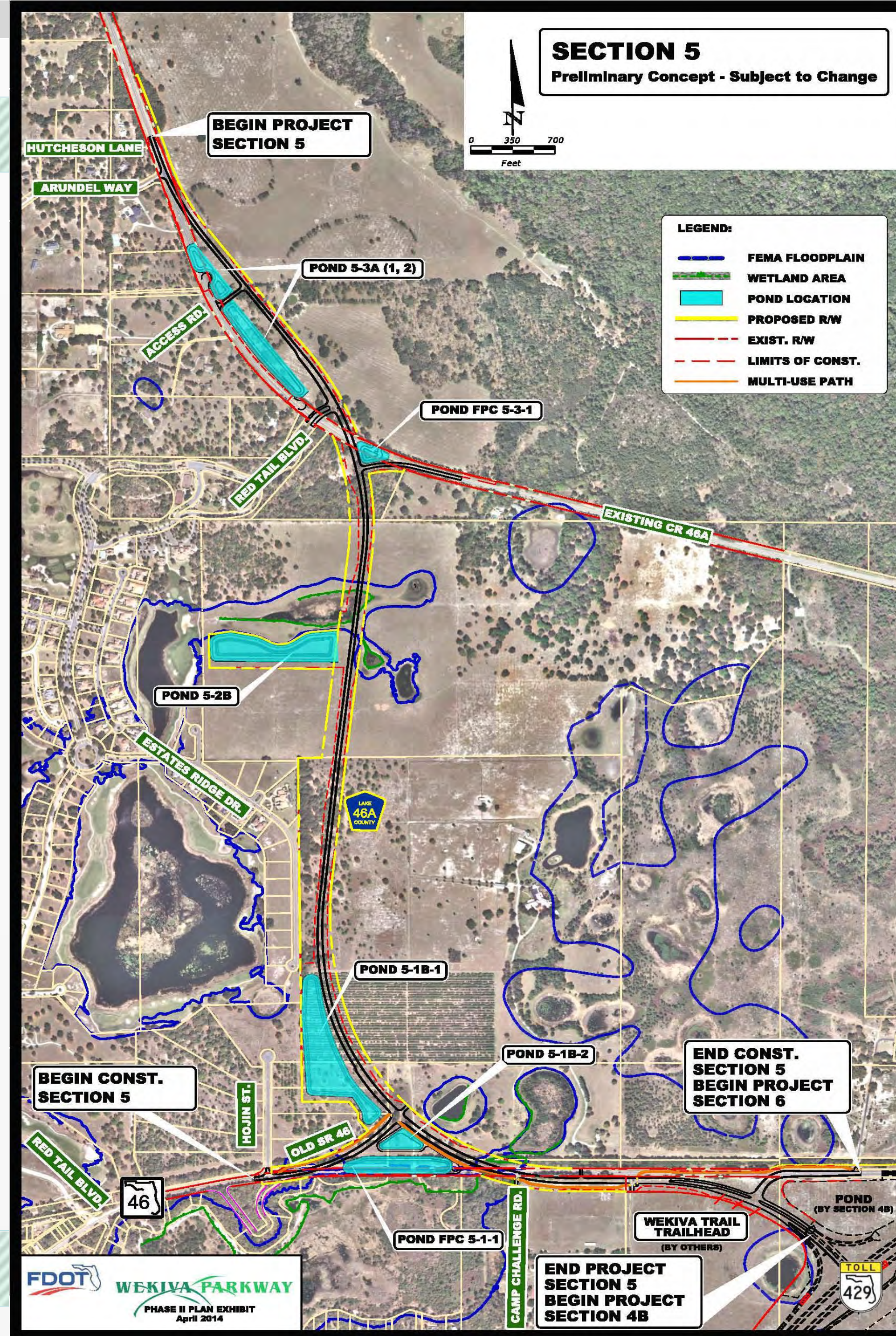
	2012				2013				2014				2015				2016				2017				2018				2019				2020				2021							
	Q1	Q2	Q3	Q4	Q1	Q2	Q3	Q4	Q1	Q2	Q3	Q4	Q1	Q2	Q3	Q4	Q1	Q2	Q3	Q4	Q1	Q2	Q3	Q4	Q1	Q2	Q3	Q4	Q1	Q2	Q3	Q4	Q1	Q2	Q3	Q4	Q1	Q2	Q3	Q4				
Section 1A - OOCEA																																												
Final Design																																												
Right of Way																																												
Construction																																												
Section 1B - OOCEA																																												
Final Design																																												
Right of Way																																												
Construction																																												
Section 2B - OOCEA																																												
Final Design																																												
Right of Way																																												
Construction																																												
Section 2A - OOCEA																																												
Final Design																																												
Right of Way																																												
Construction																																												
Section 2C - OOCEA																																												
Final Design																																												
Right of Way																																												
Construction																																												
Section 3A - FDOT																																												
Final Design																																												
Right of Way																																												
Construction																																												
Section 3B - FDOT																																												
Final Design																																												
Right of Way																																												
Construction																																												
Section 4A* & 4B* - FDOT																																												
Design-Build																																												
Section 5 - FDOT																																												
Final Design																																												
Right of Way																																												
Construction																																												
Section 6* - FDOT																																												
Preliminary Design																																												
Right of Way																																												
Design-Build																																												
Section 7A - FDOT																																												
Final Design																																												
Right of Way																																												
Construction																																												
Section 7B* - FDOT																																												
Design-Build																																												
Section 8* - FDOT																																												
Right of Way																																												
Design-Build																																												



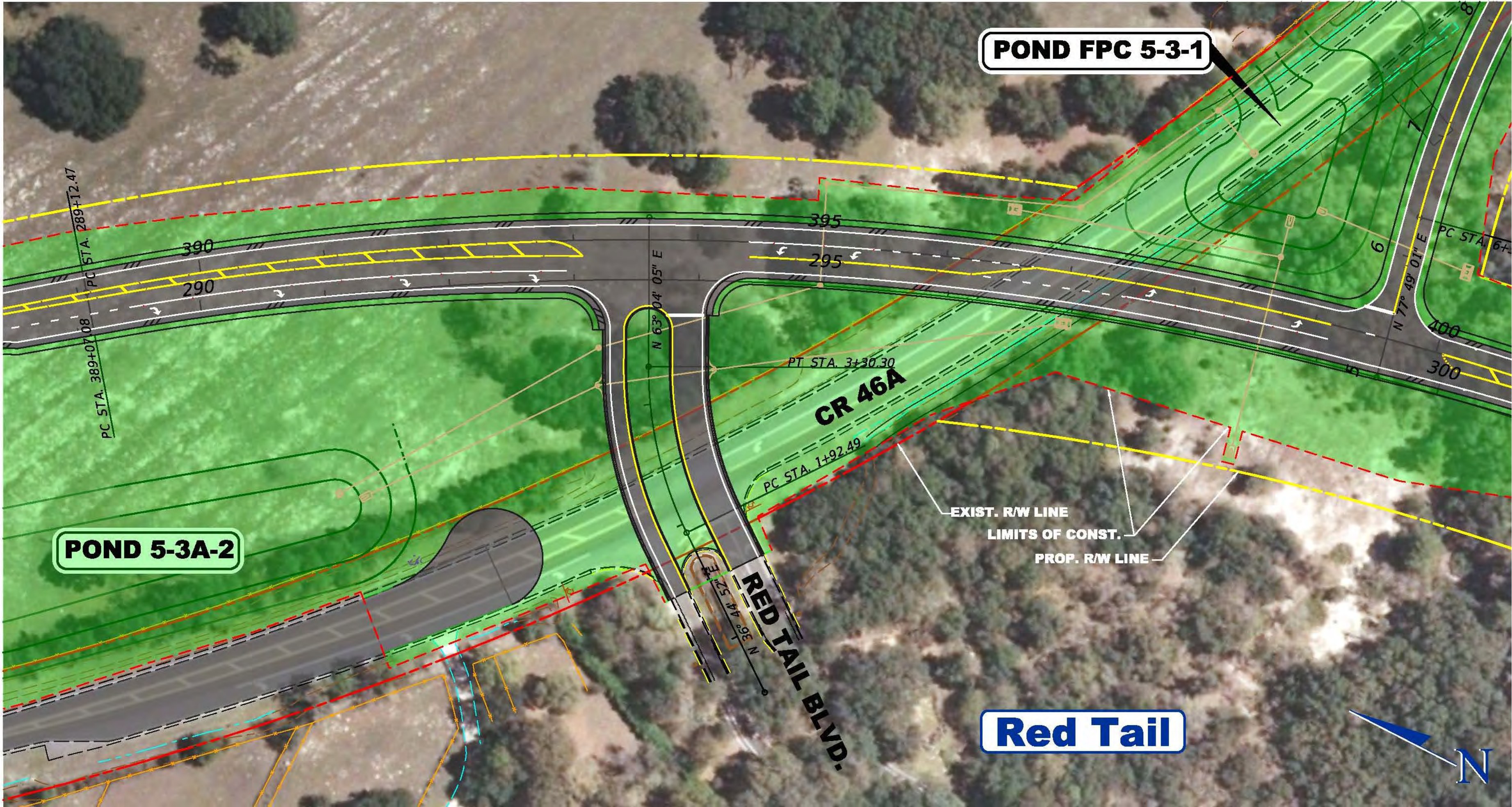
Sections 5 & 6 Design Projects



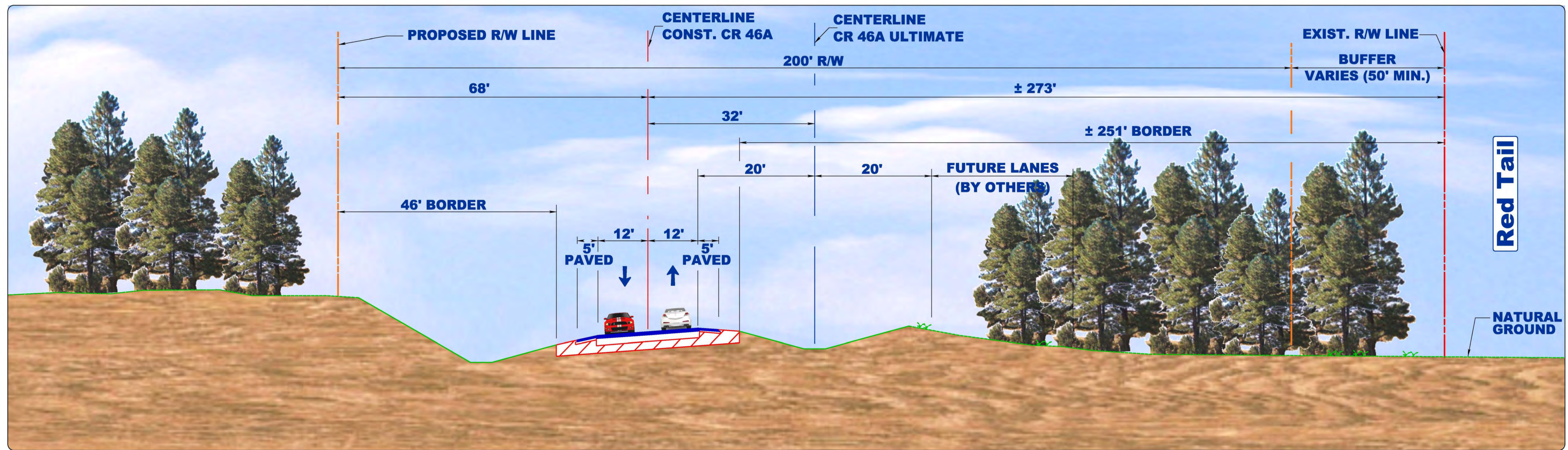
Section 5



Red Tail North Entrance

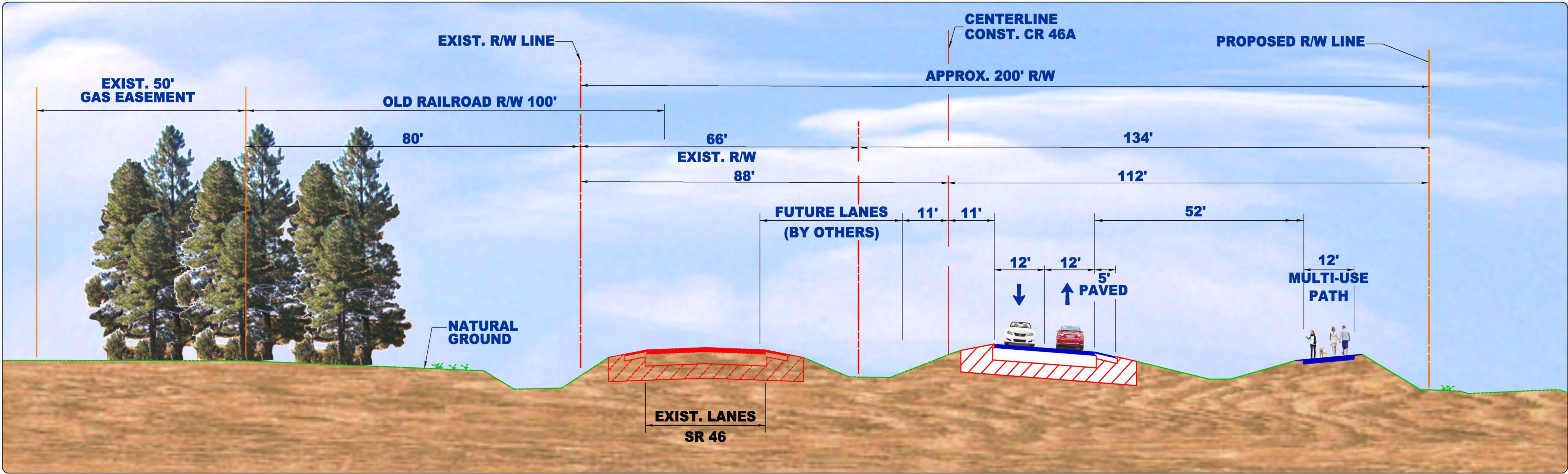


CR 46A Typical Section



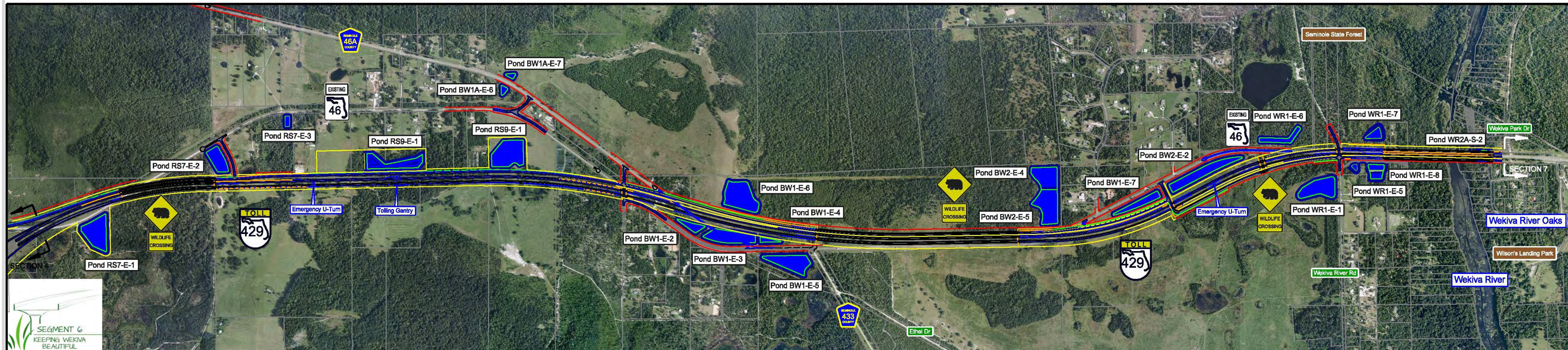
TYPICAL SECTION
From Arundel Way to Old SR 46

SR 46 Typical Section

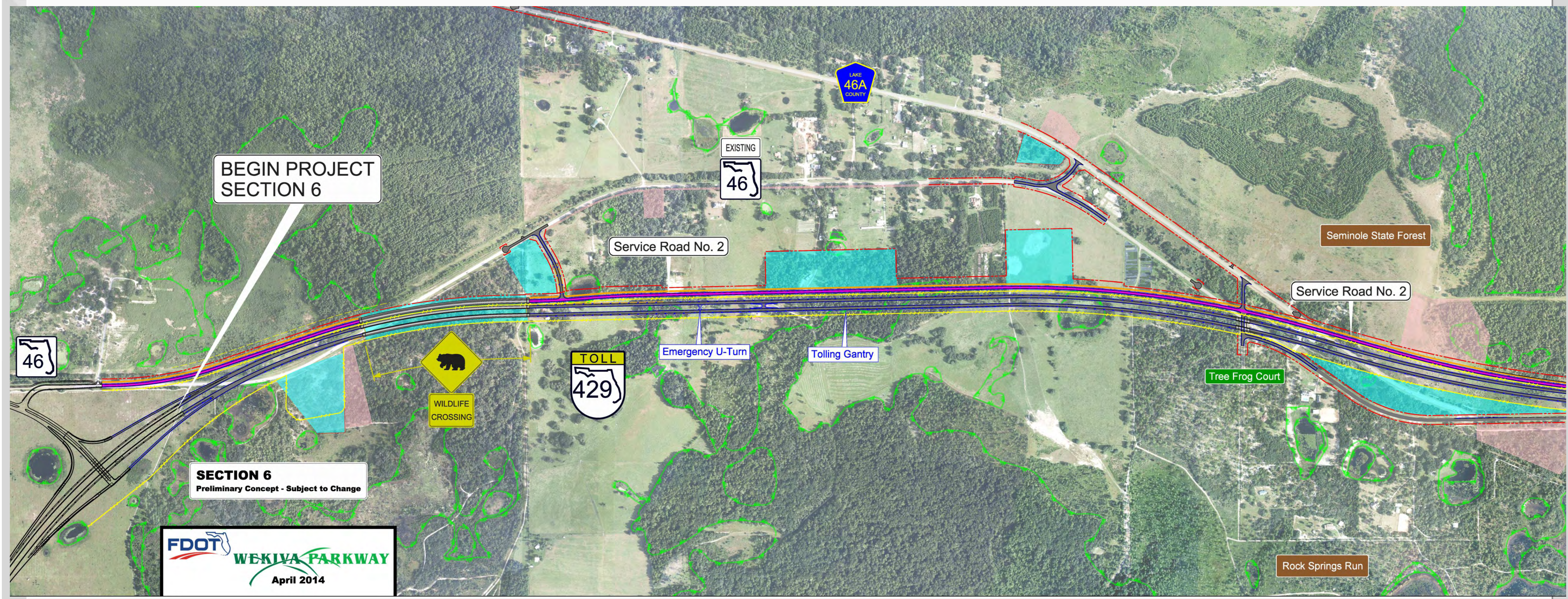


TYPICAL SECTION
 From Old SR 46 To Wekiva Trail Trailhead

Section 6



Section 6 - West End

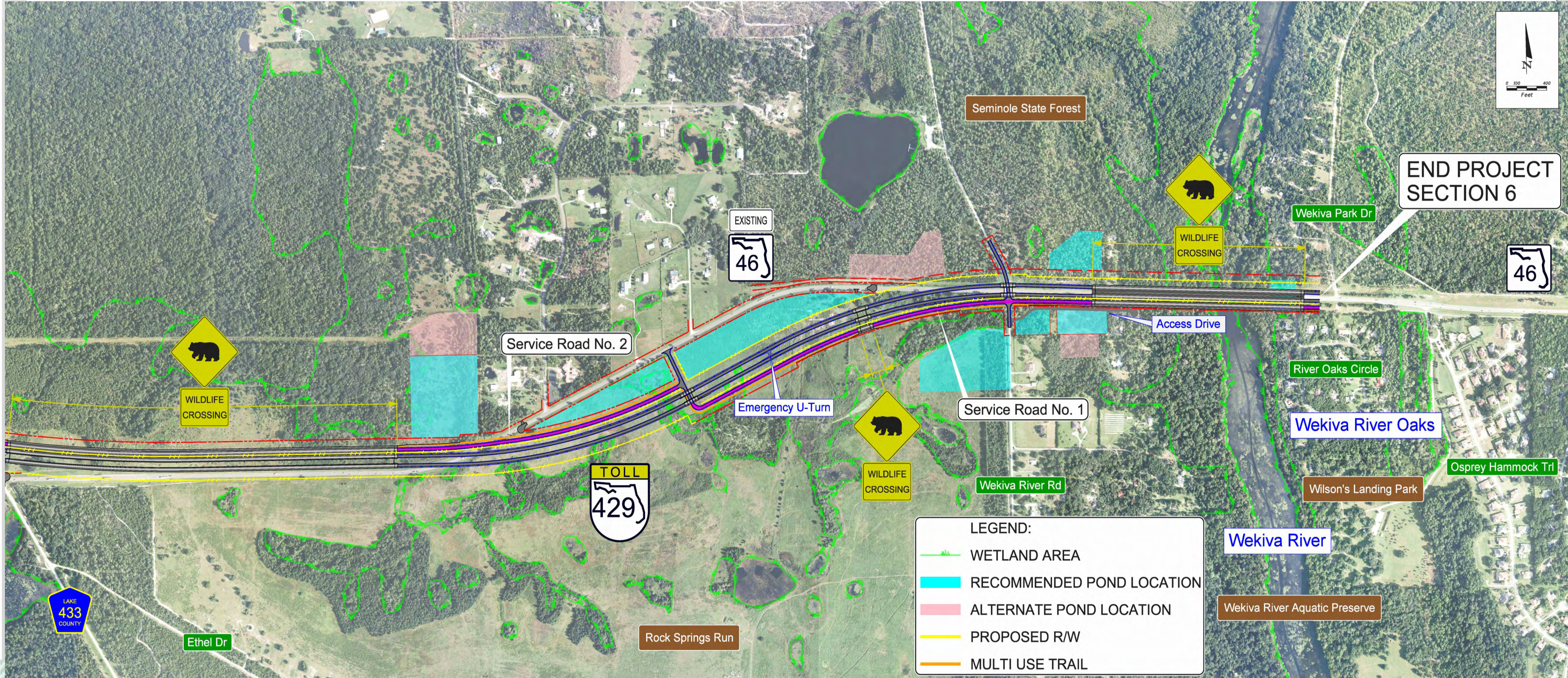


BEGIN PROJECT SECTION 6

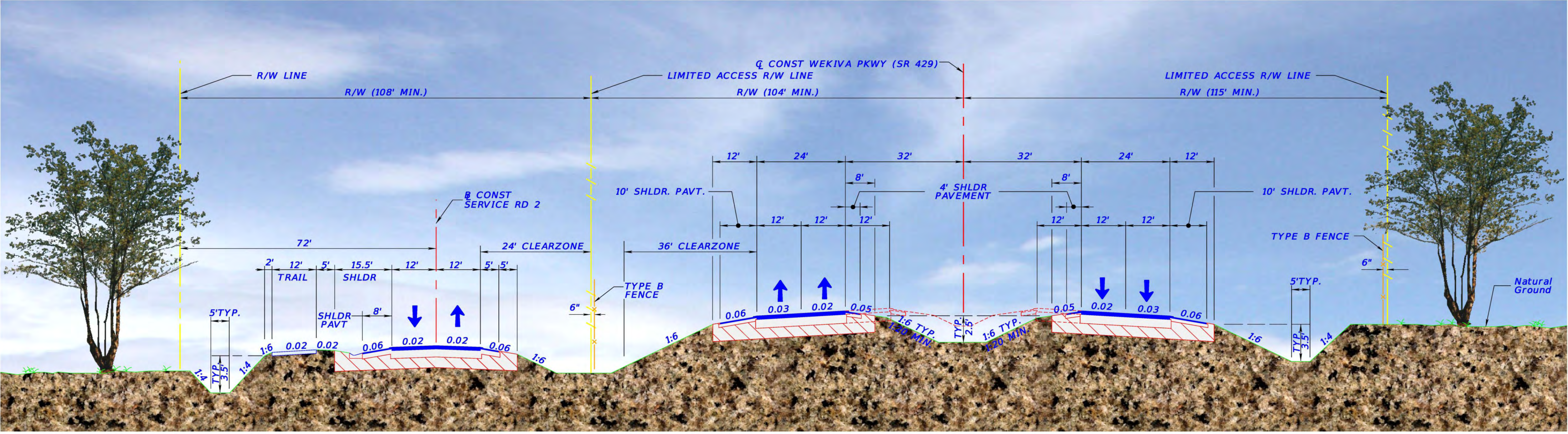
SECTION 6
Preliminary Concept - Subject to Change

FDOT
WEKIVA PARKWAY
April 2014

Section 6 - East End



Section 6 – Typical Section



Site Features



Wekiva River

Katie's Landing Park
1 Mile from Bridge

Seminole State Forest

Lower Wekiva Aquatic Preserve
State Park

SR 46 Wekiva River Bridge

Rock Springs Run
State Reserve

Wekiva River
Oaks

Foxspur

Peachtree Lane

Estates at Wekiva
Park

Wekiva River Rd

Wilson's
Landing Park
0.5 Miles from Bridge

Wekiva River Bridge - Profile



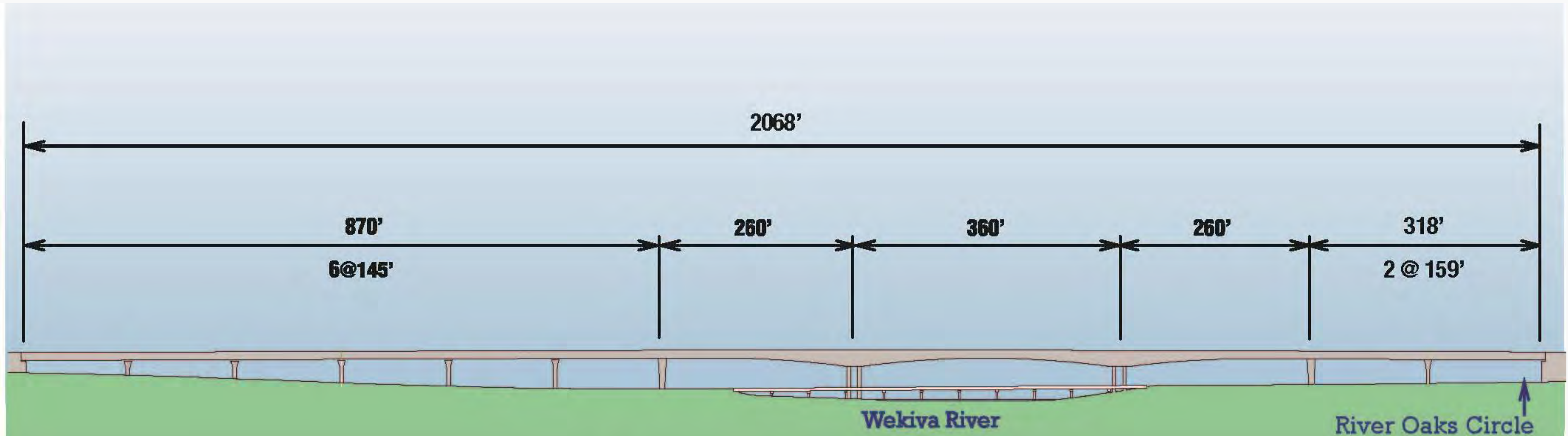
Pier Design



Wekiva River Bridges – River User's View



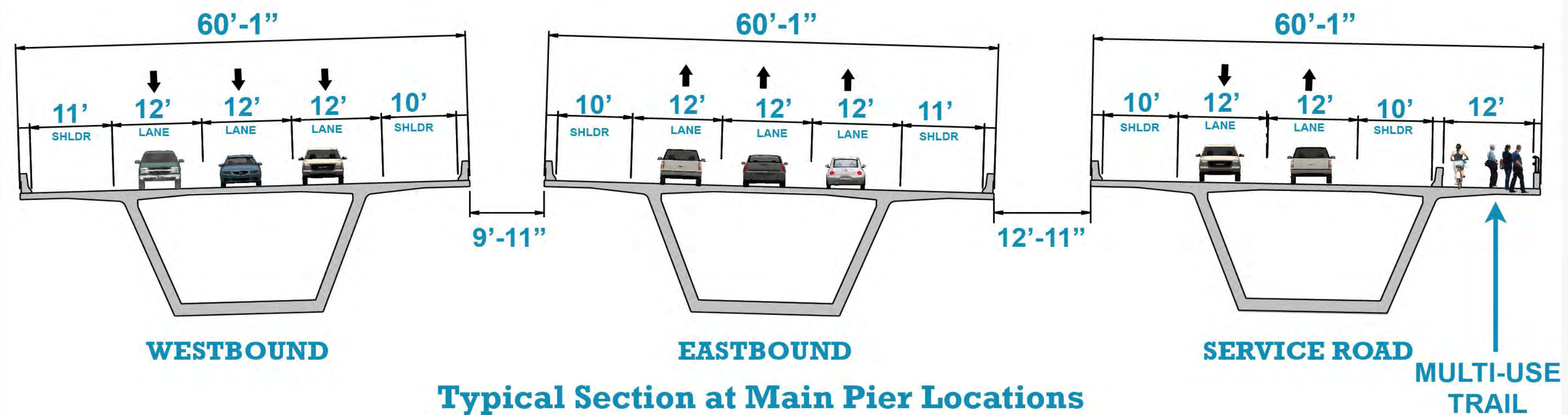
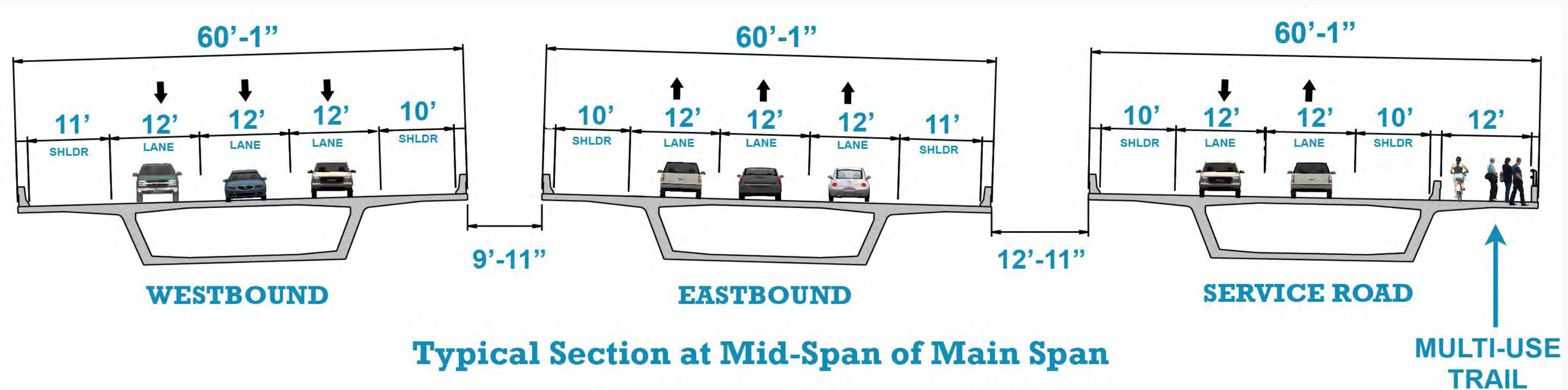
Wekiva River Bridge - Layout



Proposed Bridge Layout

New span configuration with additional bridge spans on east end

Wekiva River Bridge - Cross Sections



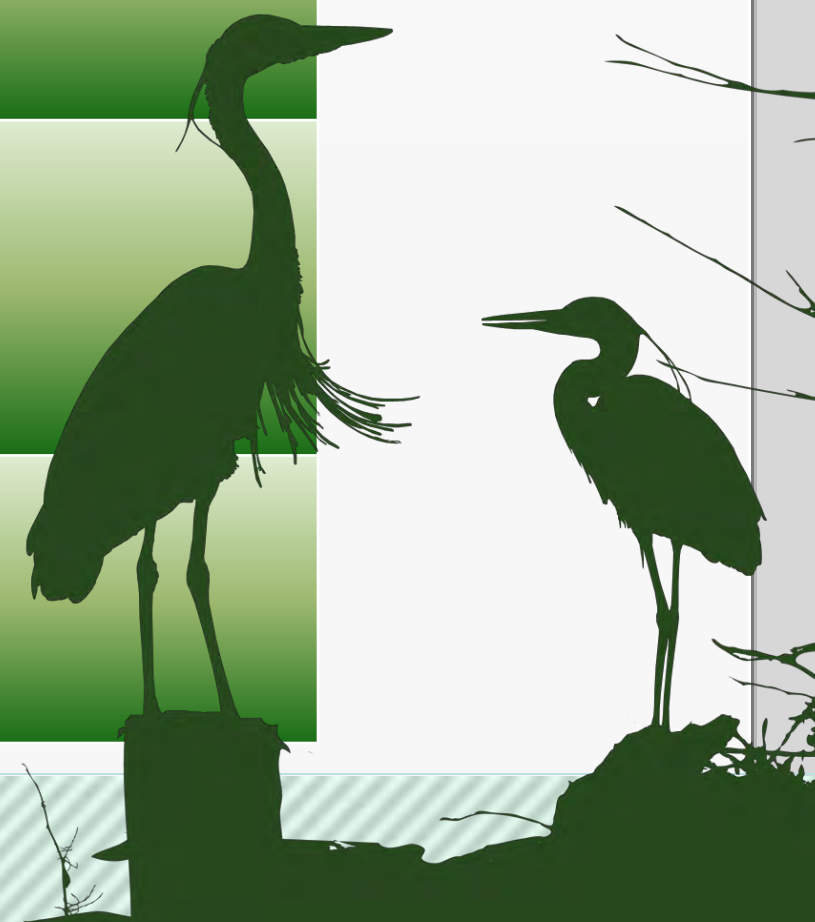
***Showing ultimate configuration.
Parkway bridges will have 2 lanes in each direction
for initial configuration.***

Wekiva Trail – Pedestrian Rail



Section 5 & 6 Costs & Schedule

PROJECT PHASE	COST	SCHEDULE
Design	\$ 10 Million	2013 – 2015
Right-Of-Way Acquisition	\$ 50 Million	2014 – 2017
Procurement		2017
Construction:	\$ 227 Million	2017 - 2020
TOTAL	\$ 287 Million	



For More Information:

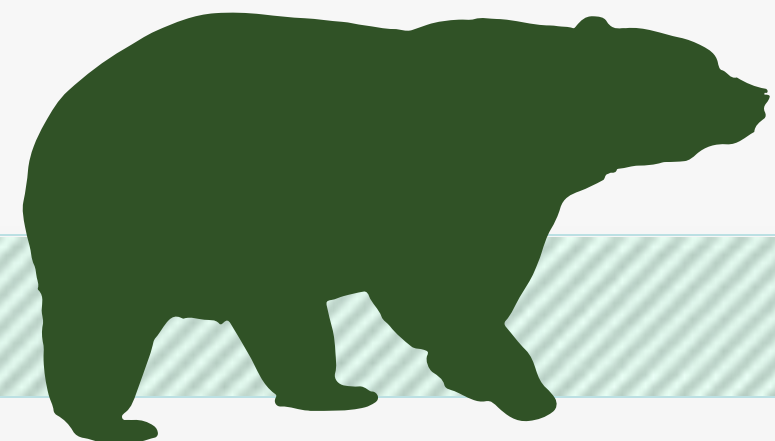
Mary Brooks

Public Involvement Coordinator

C: 407-694-5505

E: Info@wekivaparkway.com

W: www.wekivaparkway.com



The screenshot shows the Wekiva Parkway website with the following content:

- Header:** WEKIVA PARKWAY logo, "Completing Central Florida's Beltway", and a "TOLL 429" badge. Navigation links include HOME, FDOT SECTION 8, OOCEA SECTION 8, SECTION 8 BY COUNTY, PROJECT HISTORY, FAQ, and CONTACT US.
- WELCOME:** A message from the Florida Department of Transportation and the Orlando-Orange County Expressway Authority, thanking visitors for their interest in the Wekiva Parkway design and construction projects.
- Project Description:** The Wekiva Parkway (BR 429) would connect to BR 417, completing the beltway around northwest metropolitan Orlando. This estimated \$1.6 billion project includes \$500 million of non-toll road improvements including:
 - Widening seven (7) miles of BR 46 in Lake and Seminole Counties
 - Rebuilding the US 441/BR 46 interchange in Mount Dora
 - Shifting the CR 46A connection to BR 46 so wildlife can move more safely between habitats
- Map:** WEKIVA PARKWAY PROJECT SECTION MAP. A map of the project area with various sections highlighted in green (FDOT/TPK SECTION - Indicates Design Build) and purple (OOCEA SECTION). A legend in the bottom right of the map area identifies these colors. A link below the map says "Click here to view larger map".
- LATEST NEWS:** A sidebar with news items:
 - March 2014: Check Out the Latest Pond Concept for FDOT Section 3B
 - March 2014: Learn More About FDOT's Charettes for Wekiva River Bridge Design
 - February 2014: OOCEA Section 2B Reaches 90% Design Plans
 - February 2014: FDOT Section 3B Completes Noise Assessment Re-evaluation
 - December 2013: OOCEA Section 2C Reaches 30% Design Plans on Segment 2
 - December 2013: FDOT Section 3B Reaches 60% Design Plans
 - December 2013: FDOT Section 3A Reaches 30% Design Plans
- Other Links:** PUBLIC MEETING - FDOT Section 7A Public Meeting Recap, PROJECT DOCUMENT 8, PRESENTATION 8, PRESS RELEASE 8, CONTACT US (listing Mary Brooks as Public Information Officer).

twitter

facebook

WEKIWA PARKWAY

Completing Central Florida's Beltway



Thank You!

