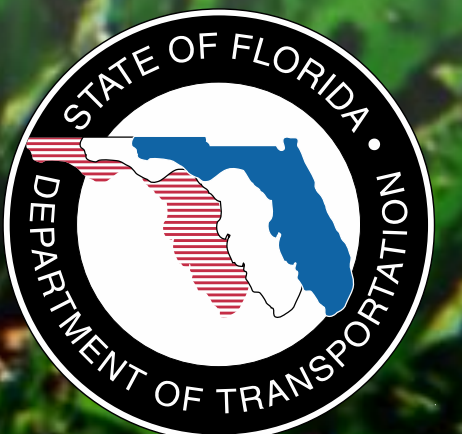




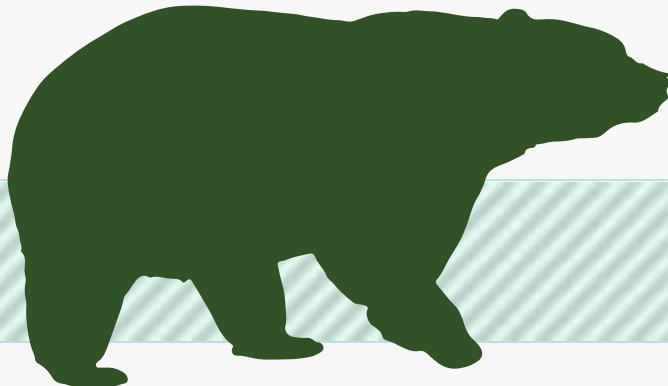
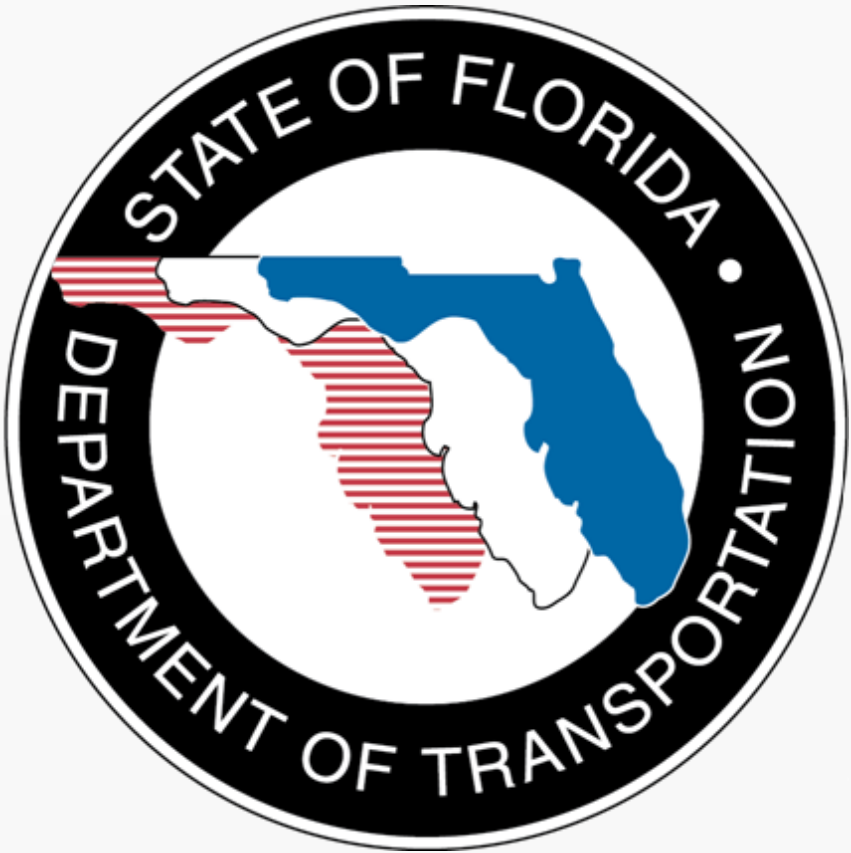
# Public Meeting - Open House

**Section 7A Preliminary Design &  
Intersection Safety Enhancements  
Nov. 12, 2013**





# Funding Partners





# WEKIVA PARKWAY

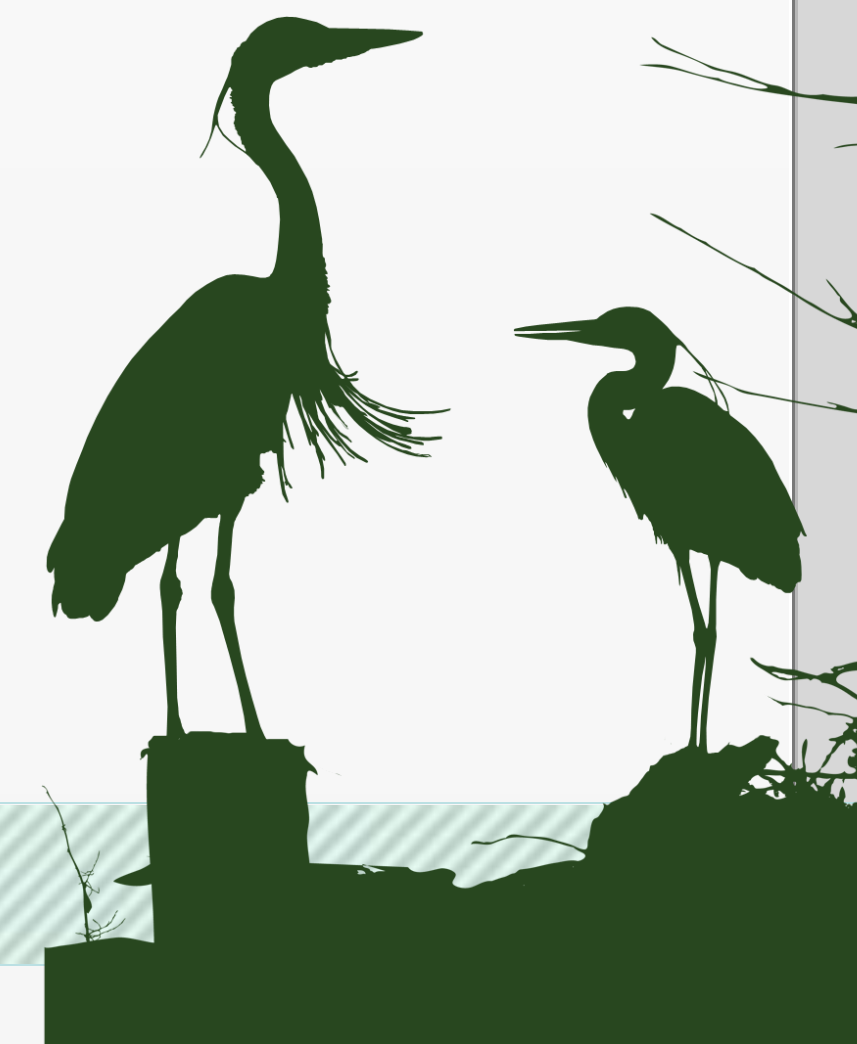


**WEKIVA PARKWAY**



# Project Description

- **\$1.6 Billion Completion of Central Florida's Beltway**
- **25-mile Toll Road**
- **Non-Toll Road Improvements:**
  - **Widening SR 46 in Lake & Seminole Counties**
  - **Rebuilding the US 441/SR 46 Interchange in Mount Dora**
  - **Relocating CR 46A to Improve Wildlife Connectivity**
  - **Parallel Service Roads in East Lake & Seminole Counties**
- **Multi-use Trail (Portions of East Lake & Seminole Counties)**





# All Electronic Tolling (AET)

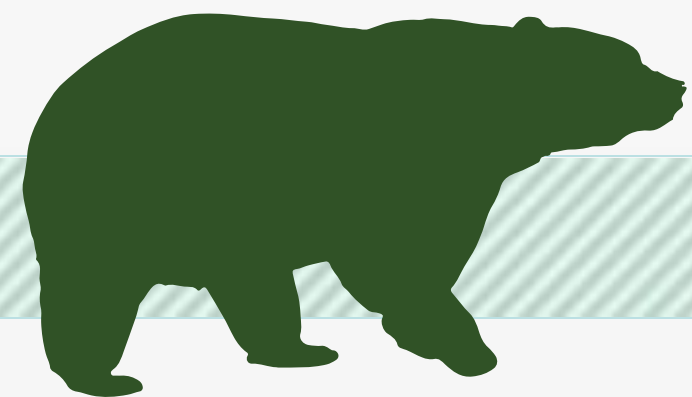
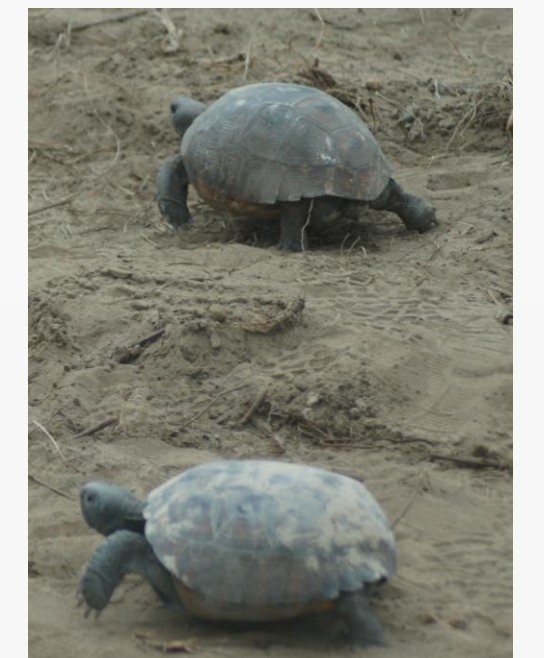
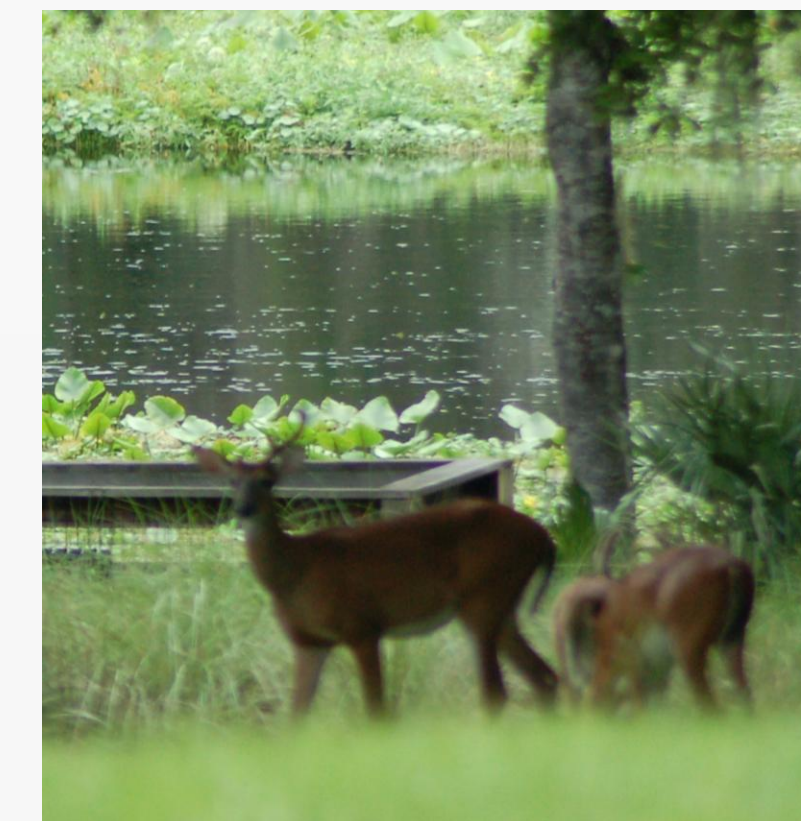
- First in Central Florida
- No Toll Plazas (SUNPass, E-Pass or Toll by Plate)
- Improved Traffic
- Enhanced Safety
- Reduces Noise
- Toll Costs Pending





## Protecting Nature

- **Wekiva River: Outstanding Florida Water & National Wild & Scenic River**
- **Authorized by the 2004 Wekiva Parkway and Protection Act**
  - **Setting Aside More than 3,400 Acres for Conservation**
  - **Largely Elevated to Reduce Accidents Between Vehicles & Wildlife**
  - **Several Wildlife Bridges**
  - **Few Interchanges (Reduce Development)**





# PROJECT ECONOMIC IMPACT

At an estimated cost of \$1.6 Billion for Engineering & Construction, the Wekiva Parkway is Projected to Provide:

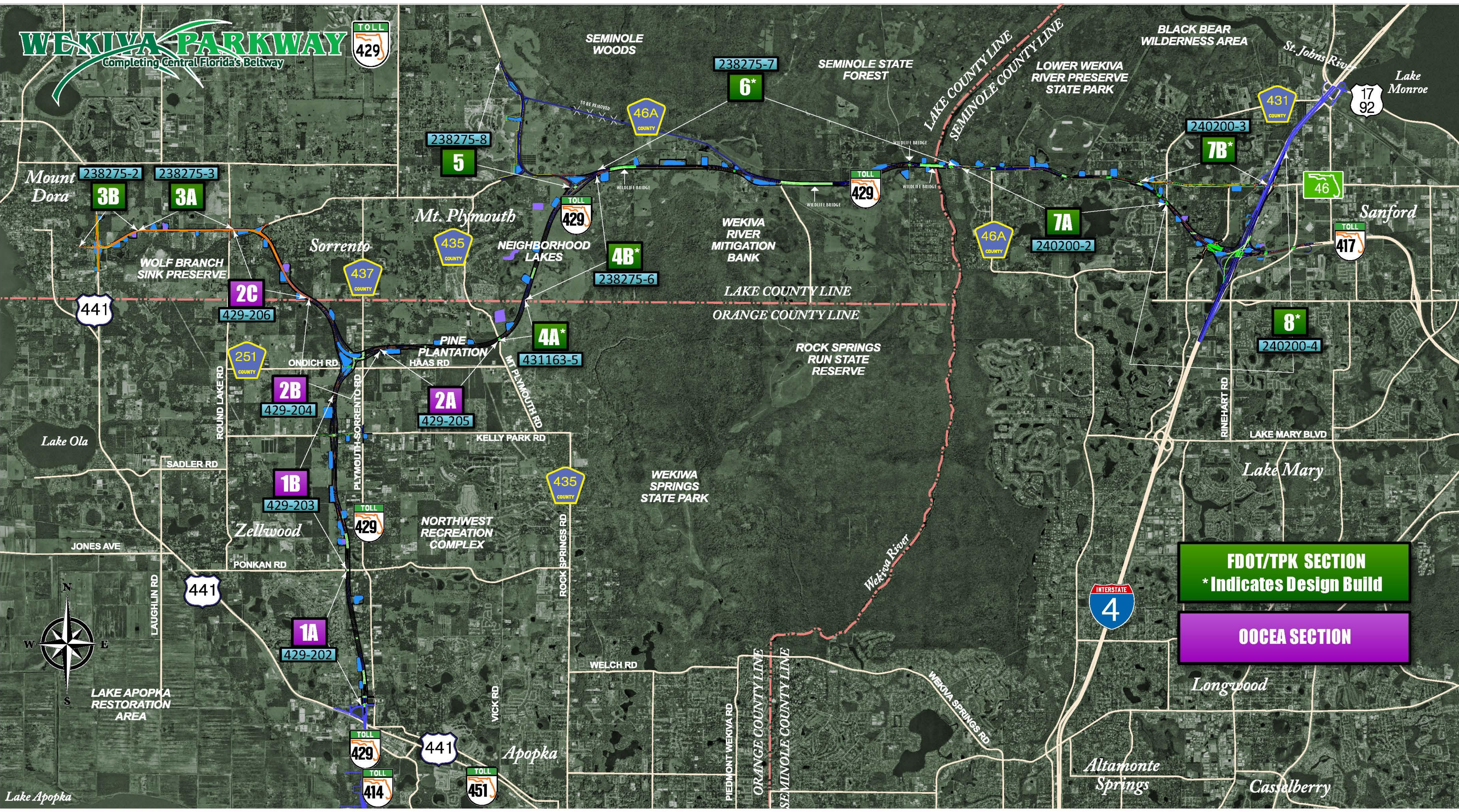
Construction Related Jobs	12,272
Supporting Industries Jobs	5,570
Induced Employment Jobs	17,983

**\*Estimated Total Jobs 35,825**



# WEKIWA PARKWAY

Completing Central Florida's Beltway



**FDOT/TPK SECTION**  
\* Indicates Design Build

**OCEA SECTION**

Lake Apopka

Lake Monroe

Castelberry

Altamonte Springs

Longwood

Lake Mary

Sanford

Mt. Plymouth

Mount Dora

Zellwood

Apopka

Sorrento

SEMINOLE WOODS

SEMINOLE STATE FOREST

LOWER WEKIWA RIVER PRESERVE STATE PARK

BLACK BEAR WILDERNESS AREA

WEKIWA RIVER MITIGATION BANK

ROCK SPRINGS RUN STATE RESERVE

WEKIWA SPRINGS STATE PARK

WOLF BRANCH SINK PRESERVE

NEIGHBORHOOD LAKES

PINE PLANTATION

NORTHWEST RECREATION COMPLEX

JONES AVE

SADLER RD

PONKAN RD

ONDICH RD

HAAS RD

KELLY PARK RD

WELCH RD

VICK RD

LAUGHLIN RD

ROUND LAKE RD

PLYMOUTH-SORRENTO RD

KELLY PARK RD

ROCK SPRINGS RD

PIEDMONT WEKIWA RD

ORANGE COUNTY LINE

SEMINOLE COUNTY LINE

WEKIWA SPRINGS RD

RINEHART RD

LAKE MARY BLVD

St. Johns River

LAKE COUNTY LINE  
SEMINOLE COUNTY LINE

LAKE COUNTY LINE  
ORANGE COUNTY LINE

Wekiwa River

TO BE REMOVED

WILDLIFE BRIDGE

WILDLIFE BRIDGE

WILDLIFE BRIDGE

441

429-206

429-204

429-203

429-202

429

429

414

441

451

238275-8

5

238275-7

6\*

238275-6

4B\*

431163-5

4A\*

435

435

46A

240200-3

7B\*

240200-2

7A

240200-4

8\*

431

1792

46

417

4

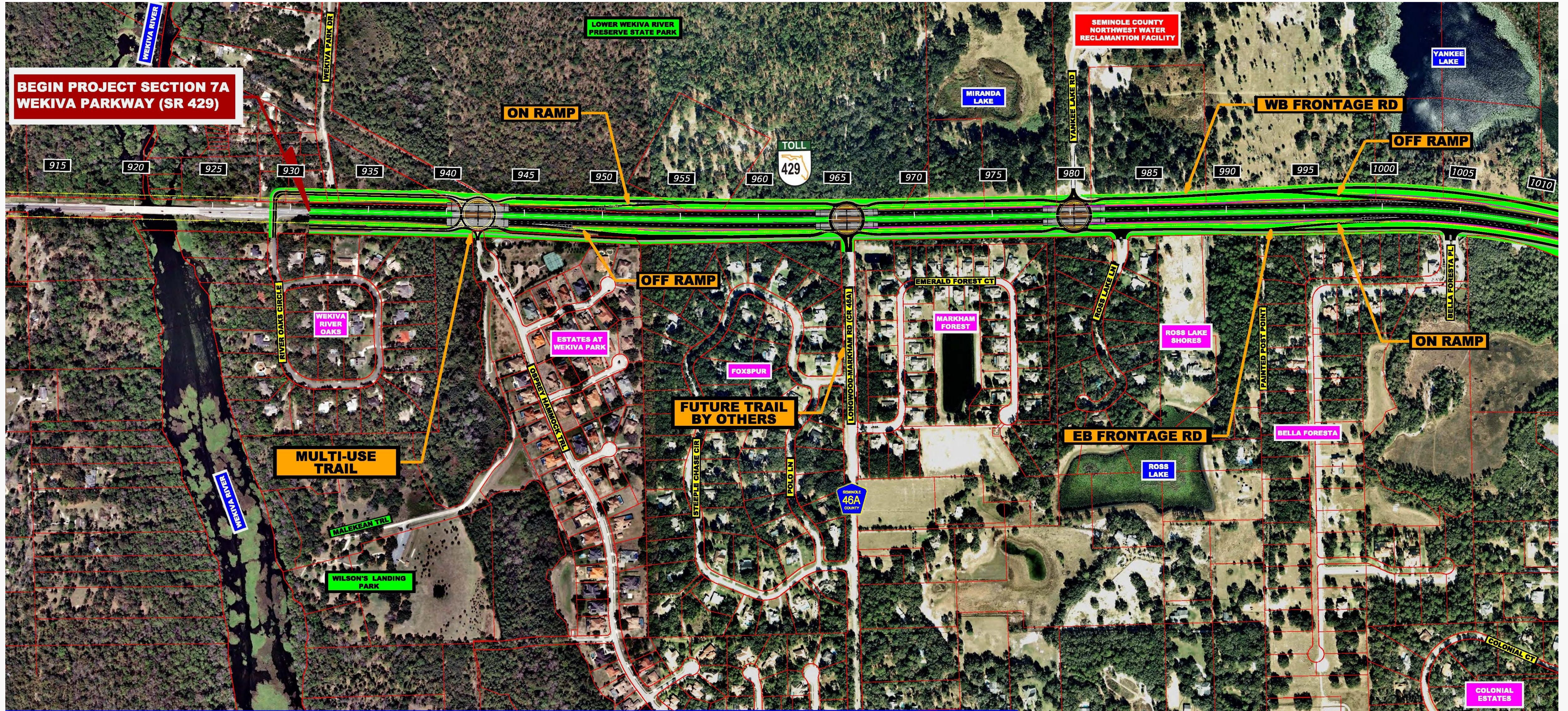


# Section 7A Preliminary Plans





# Section 7A - West

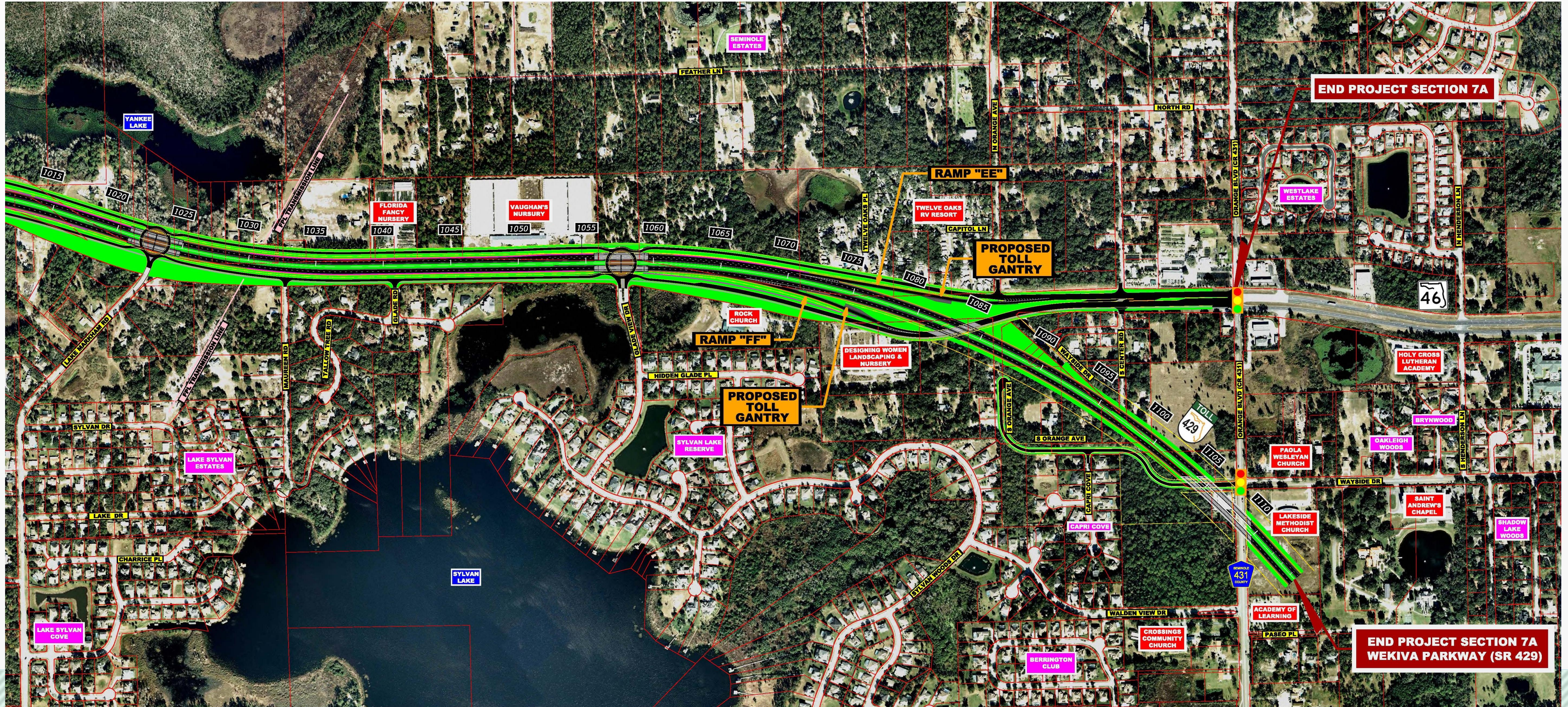


**WEKIVA PARKWAY (SR 429)**  
SECTION 7A

LEGEND	
	PROPOSED ROADWAY
	PROPOSED BRIDGE
	PROPOSED L/A ROW
	SOD
	PROPOSED SIDEWALK & SHARED USE PATH
	PROPOSED ROW
	SIGNALIZED INTERSECTION
	EXISTING ROW & PROPERTY LINE

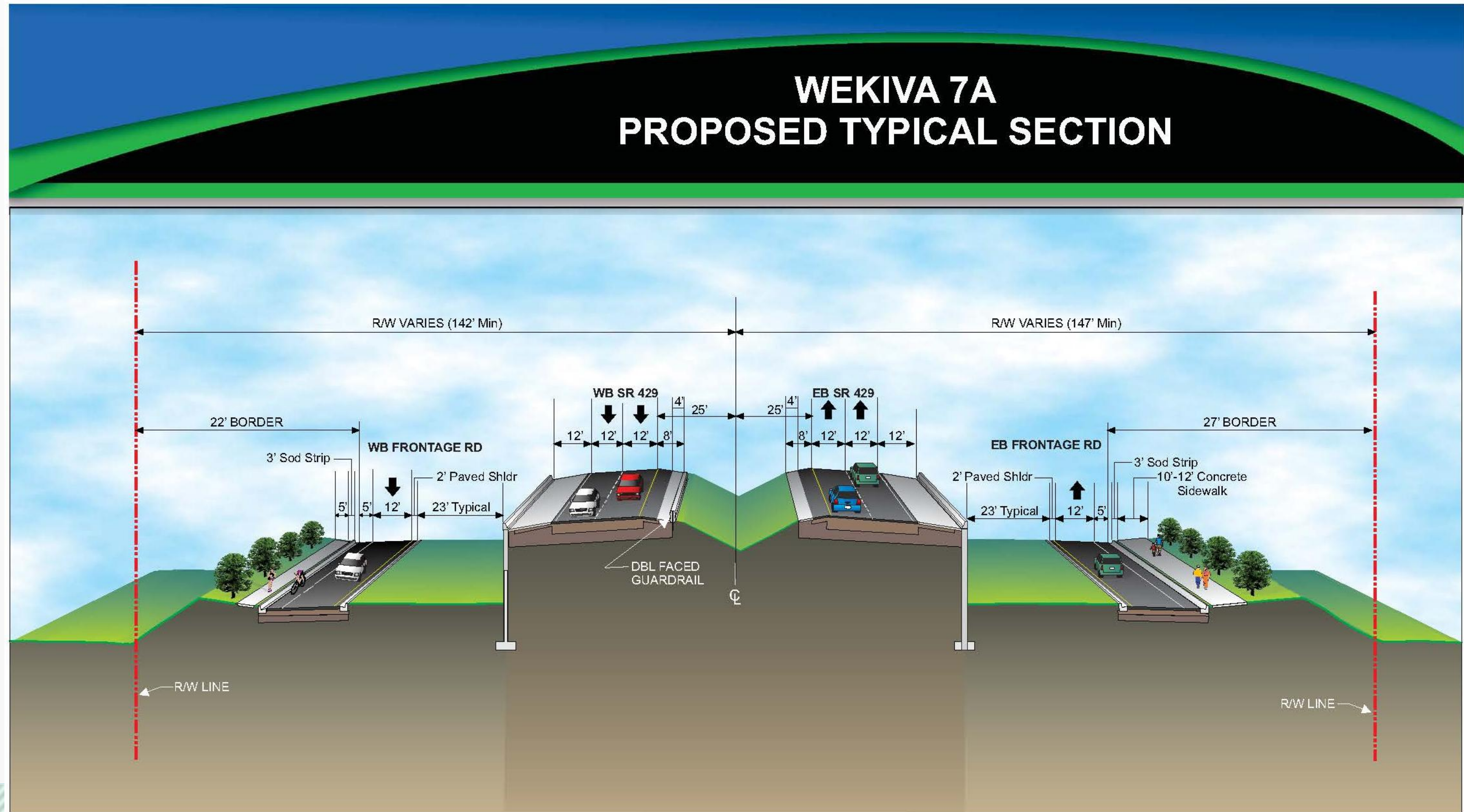


# Section 7A - East





# Section 7A – Typical Section





# Section 7A Cost & Schedule

PROJECT PHASE	COST	SCHEDULE
Design	\$ 7 Million	2013 – 2015
Right-Of-Way Acquisition	\$ 70 Million	2015 – 2017
Procurement		2017
Construction:	\$129 Million	2017 - 2019
<b>TOTAL</b>	<b>\$206 Million</b>	







# Wekiva Parkway (SR 429) Schedule\*



	2012				2013				2014				2015				2016				2017				2018				2019				2020				2021			
	Q1	Q2	Q3	Q4	Q1	Q2	Q3	Q4	Q1	Q2	Q3	Q4	Q1	Q2	Q3	Q4	Q1	Q2	Q3	Q4	Q1	Q2	Q3	Q4	Q1	Q2	Q3	Q4	Q1	Q2	Q3	Q4	Q1	Q2	Q3	Q4	Q1	Q2	Q3	Q4
<b>Section 1A - OOCEA</b>																																								
Final Design																																								
Right of Way																																								
Construction																																								
<b>Section 1B - OOCEA</b>																																								
Final Design																																								
Right of Way																																								
Construction																																								
<b>Section 2B - OOCEA</b>																																								
Final Design																																								
Right of Way																																								
Construction																																								
<b>Section 2A - OOCEA</b>																																								
Final Design																																								
Right of Way																																								
Construction																																								
<b>Section 2C - OOCEA</b>																																								
Final Design																																								
Right of Way																																								
Construction																																								
<b>Section 3A - FDOT</b>																																								
Final Design																																								
Right of Way																																								
Construction																																								
<b>Section 3B - FDOT</b>																																								
Final Design																																								
Right of Way																																								
Construction																																								
<b>Section 4A* &amp; 4B* - FDOT</b>																																								
Design-Build																																								
<b>Section 5 - FDOT</b>																																								
Final Design																																								
Right of Way																																								
Construction																																								
<b>Section 6* - FDOT</b>																																								
Preliminary Design																																								
Right of Way																																								
Design-Build																																								
<b>Section 7A - FDOT</b>																																								
Final Design																																								
Right of Way																																								
Construction																																								
<b>Section 7B* - FDOT</b>																																								
Design-Build																																								
<b>Section 8* - FDOT</b>																																								
Right of Way																																								
Design-Build																																								

\*Schedule Subject to Change  
 \*For more information, visit [www.wekivaparkway.com](http://www.wekivaparkway.com)





For More Information:

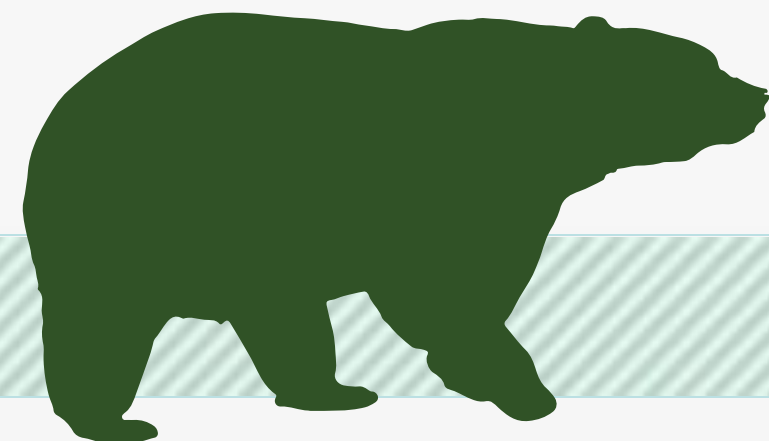
Mary Brooks

Public Involvement Coordinator

C: 407-694-5505

E: [Info@wekivaparkway.com](mailto:Info@wekivaparkway.com)

W: [www.wekivaparkway.com](http://www.wekivaparkway.com)



The screenshot shows the official website for Wekiva Parkway, titled "Completing Central Florida's Beltway". The page features a navigation menu with links for Home, FDOT Projects, OOCEA Projects, Projects by County, Project History, and Contact Us. A "TOLL 429" logo is prominently displayed. The main content area includes a "WELCOME" section with a project overview and a list of improvements: building seven miles of four- and six-laning of SR 46, rebuilding the US 441/SR 46 interchange, and relocating the CR 46A connection. Below this is a "WEKIVA PARKWAY PROJECT SECTION MAP" with a legend indicating "FDOT/TPK SECTION" (green) and "OOCEA SECTION" (purple). A right-hand sidebar contains "LATEST NEWS" with dates from August 2013 to May 2013, "PROJECT DOCUMENTS", "PRESENTATIONS", and "PRESS RELEASES". At the bottom of the page, there is a paragraph of text and a "Click here to view larger map" link.





# WEKIWA PARKWAY

Completing Central Florida's Beltway



Thank You!

