



## A Regional Transportation Solution

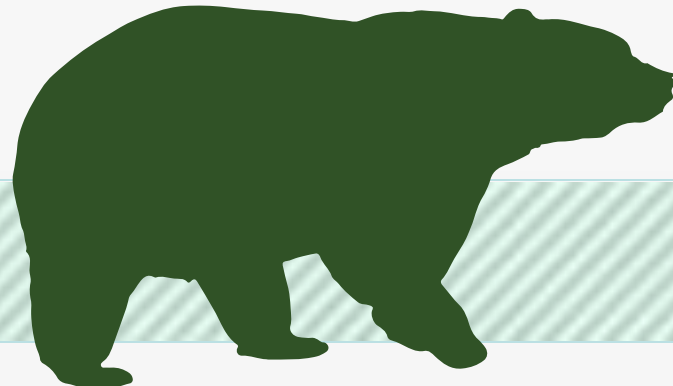
St. Johns River Alliance  
July 24, 2014



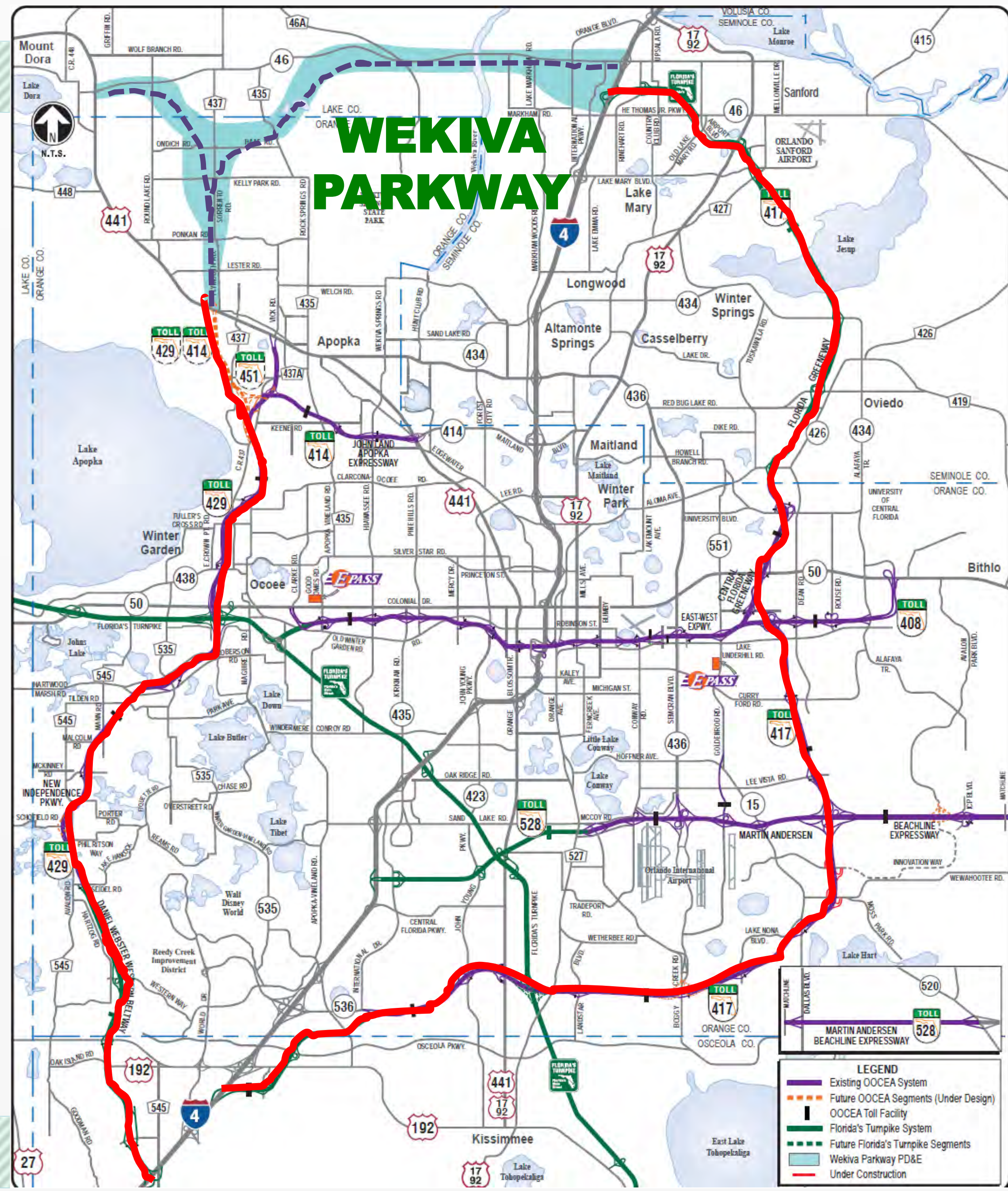
# CENTRAL FLORIDA LEGACY PROJECTS



# Funding Partners



# WEKIVA PARKWAY



**LEGEND**

- Existing OCEA System
- Future OCEA Segments (Under Design)
- | OCEA Toll Facility
- Florida's Turnpike System
- - - Future Florida's Turnpike Segments
- Wekiva Parkway PD&E
- Under Construction



## Project Description

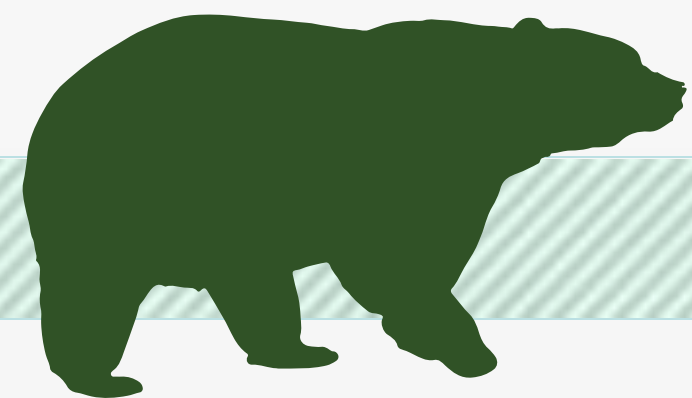
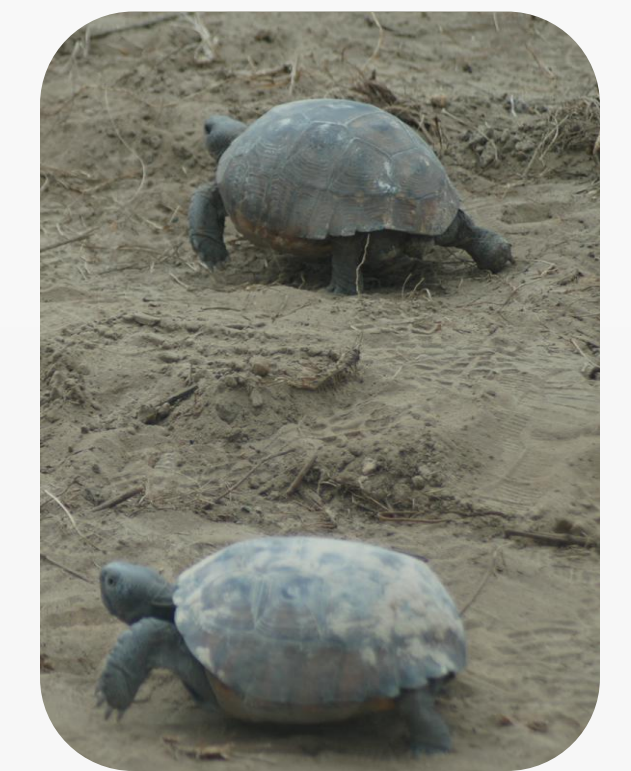
- **\$1.6 Billion Completion of Central Florida's Beltway**
- **25-mile Toll Road**
- **Non-Toll Road Improvements:**
  - **Widening SR 46 in Lake & Seminole Counties**
  - **Rebuilding the US 441/SR 46 Interchange in Mount Dora**
  - **Relocating CR 46A to Improve Wildlife Connectivity**
  - **Parallel Service Roads in East Lake & Seminole Counties**
- **Multi-use Trail (Parts of East Lake & Seminole Counties)**

**WEKIYA PARKWAY**



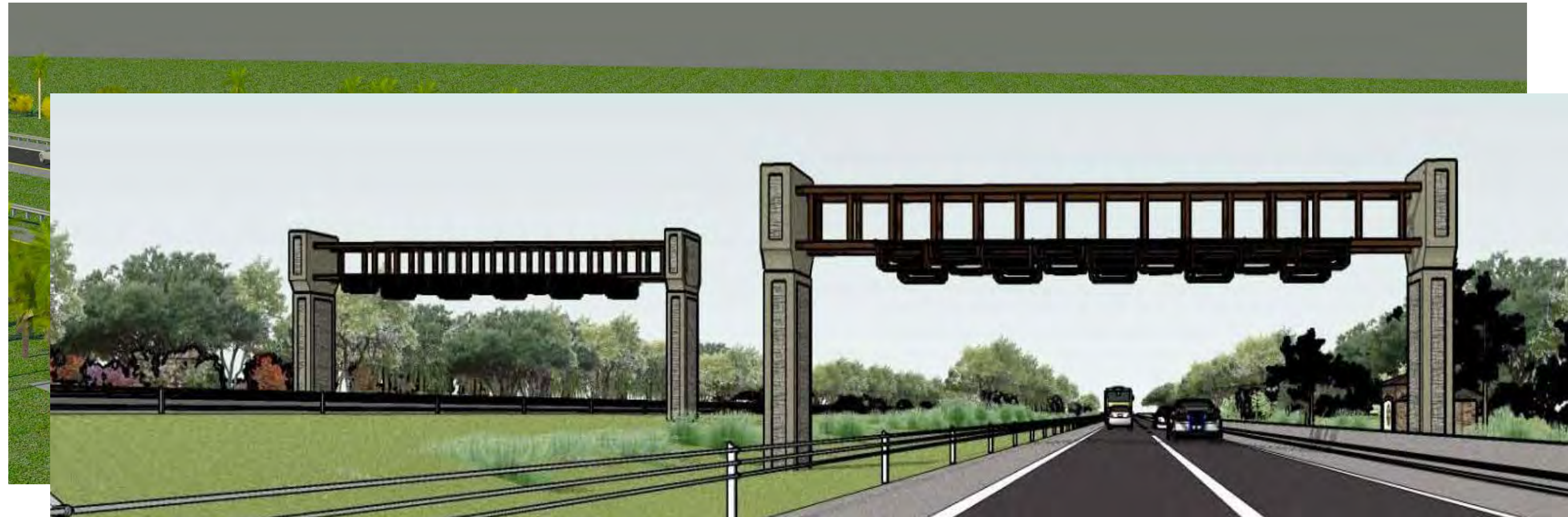
# Protecting Nature

- **Wekiva River: Outstanding Florida Water & National Wild & Scenic River**
- **Authorized: 2004 Wekiva Parkway & Protection Act**
  - **Set Aside > 3,400 Acres for Conservation**
  - **Largely Elevated to Reduce Accidents Between Vehicles & Wildlife**
  - **Several Wildlife Bridges**
  - **Few Interchanges (Reduce Development)**



# All Electronic Tolling (AET)

- **First in Central Florida**
- **No Toll Plazas (SUNPass or E-Pass)**
- **Improved Traffic Flow Efficiency**
- **Enhanced Safety**
- **Reduced Noise**
- **Toll Costs Pending**



# PROJECT ECONOMIC IMPACT

**At an estimated cost of \$1.6 Billion for Engineering & Construction, the Wekiva Parkway is Projected to Provide:**

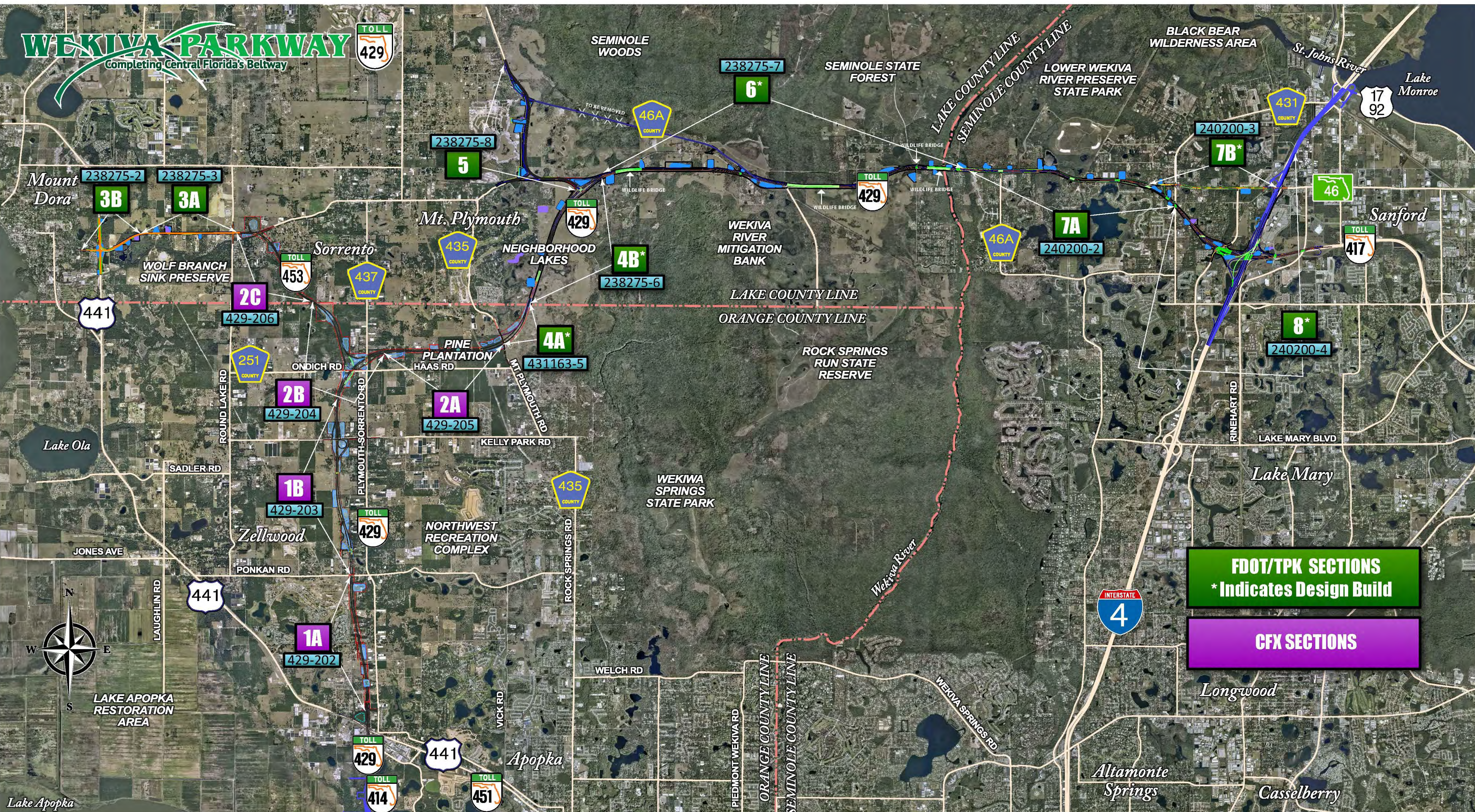
<b>Construction Related Jobs</b>	<b>12,272</b>
<b>Supporting Industries Jobs</b>	<b>5,570</b>
<b>Induced Employment Jobs</b>	<b>17,983</b>

**\*Estimated Total Jobs 35,825**



# WEKIVA PARKWAY

Completing Central Florida's Beltway



**FDOT/TPK SECTIONS**  
\* Indicates Design Build

**CFX SECTIONS**



Lake Apopka

# Design Status

SECTION	MILESTONE	SUBMITTAL SCHEDULE
1A	100%	July 2014
1B	100%	June 2014
2A	100%	June 2014
2B	100%	August 2014
2C	90%	August 2014
3A	90%	August 2014
3B	90%	August 2014
5	90%	November 2014
6	60%	November 2014
7A	60%	November 2014
7B & 8	Design-Build	





# Expressway Authority Sections



# Pier Option

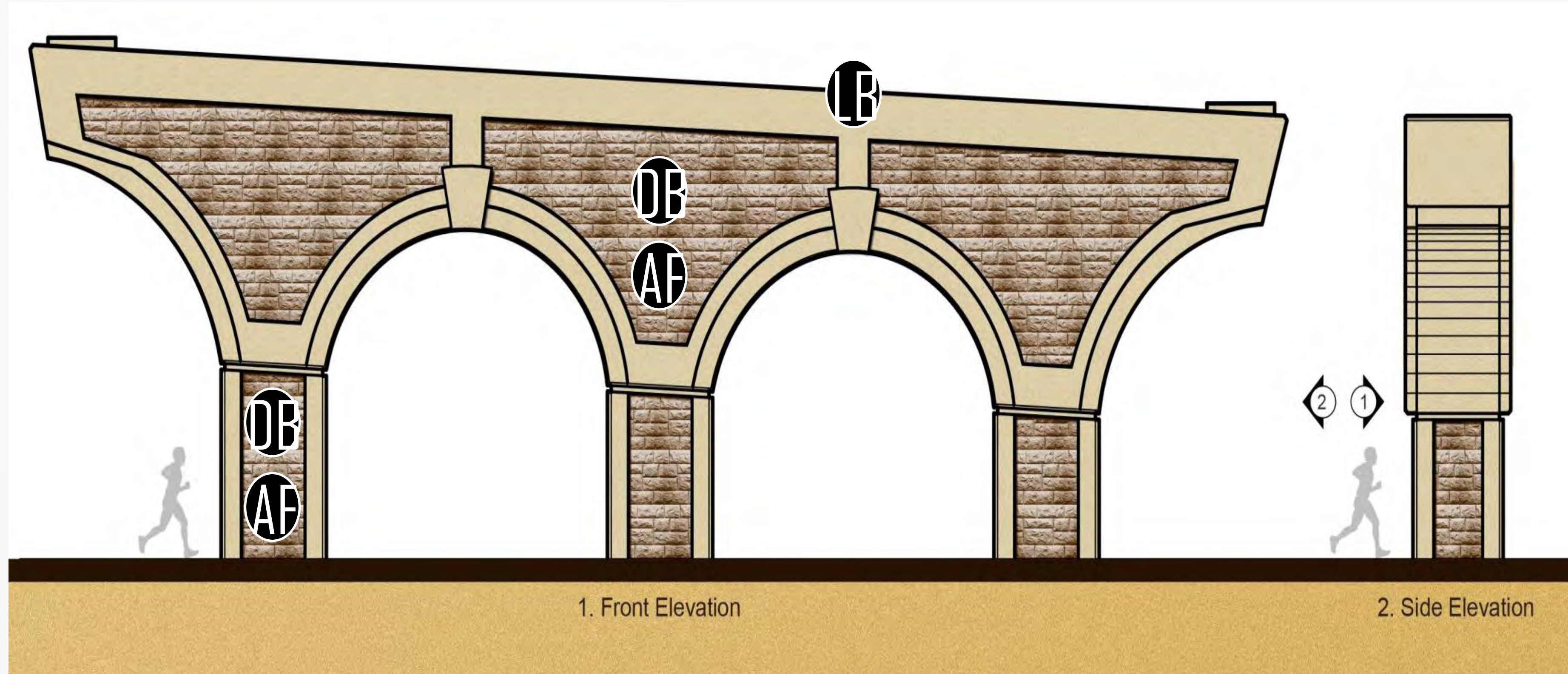
## Standard Colors



Light Brown  
Dark Green



Dark Brown  
Ashlar Formline



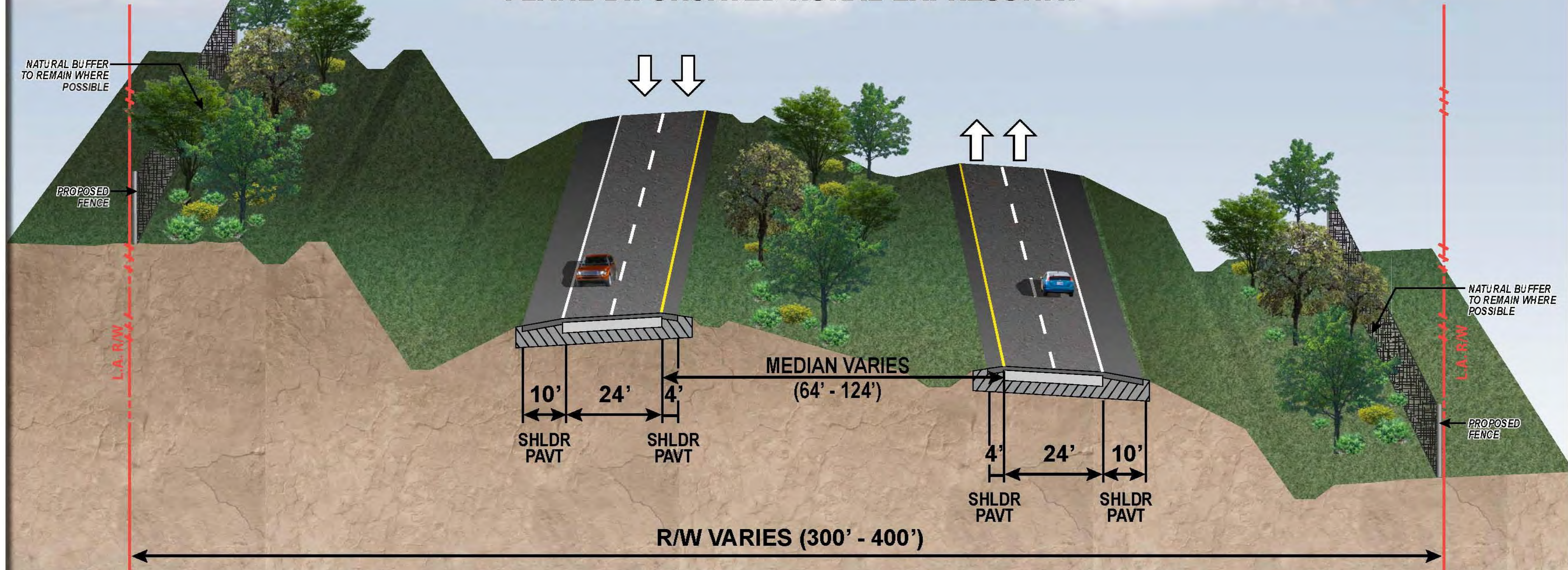
1. Front Elevation

2. Side Elevation

# WEKIVA PARKWAY

## TYPICAL SECTION

### SR 429 (WEKIVA PARKWAY) 4-LANE BIFURCATED RURAL EXPRESSWAY

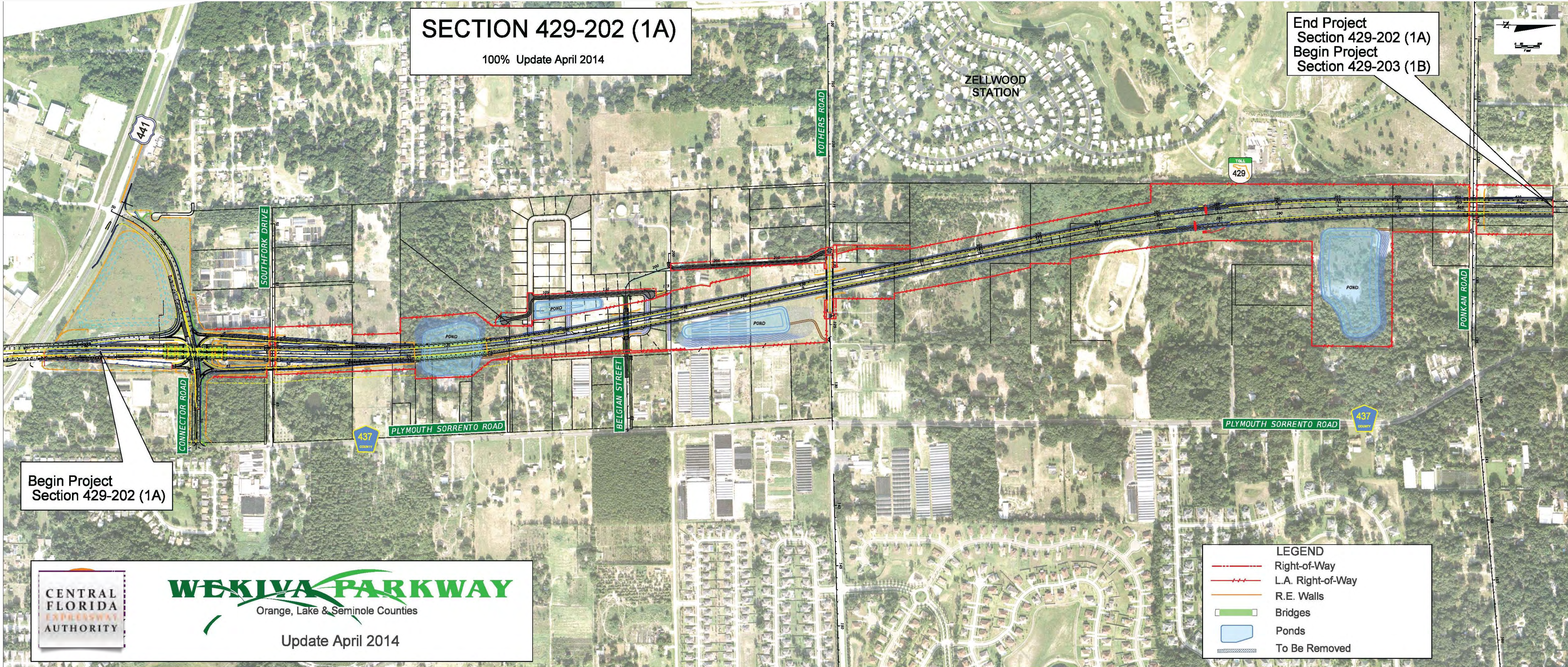


NOTE: PRELIMINARY, SUBJECT TO CHANGE

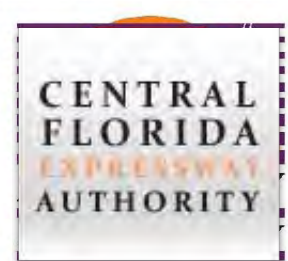
# Section 1A

**SECTION 429-202 (1A)**  
100% Update April 2014

End Project  
Section 429-202 (1A)  
Begin Project  
Section 429-203 (1B)



Begin Project  
Section 429-202 (1A)



**WEKIVA PARKWAY**  
Orange, Lake & Seminole Counties  
Update April 2014

LEGEND	
	Right-of-Way
	L.A. Right-of-Way
	R.E. Walls
	Bridges
	Ponds
	To Be Removed

# Section 1 Construction Impacts

## - Local Roads

### Parkway Depressed

- Under Belgian St. & Yothers Rd.
- Similar to SR 414 Under Marden Rd.





# Section 1B

## SECTION 429-203 (1B)

90% Update October 2013 Subject to Change

Begin Project  
Section 429-203 (1B)  
End Project  
Section 429-202 (1A)

End Project  
Section 429-203 (1B)  
Begin Project  
Section 429-204 (2B)





CENTRAL  
FLORIDA  
EXPRESSWAY  
AUTHORITY

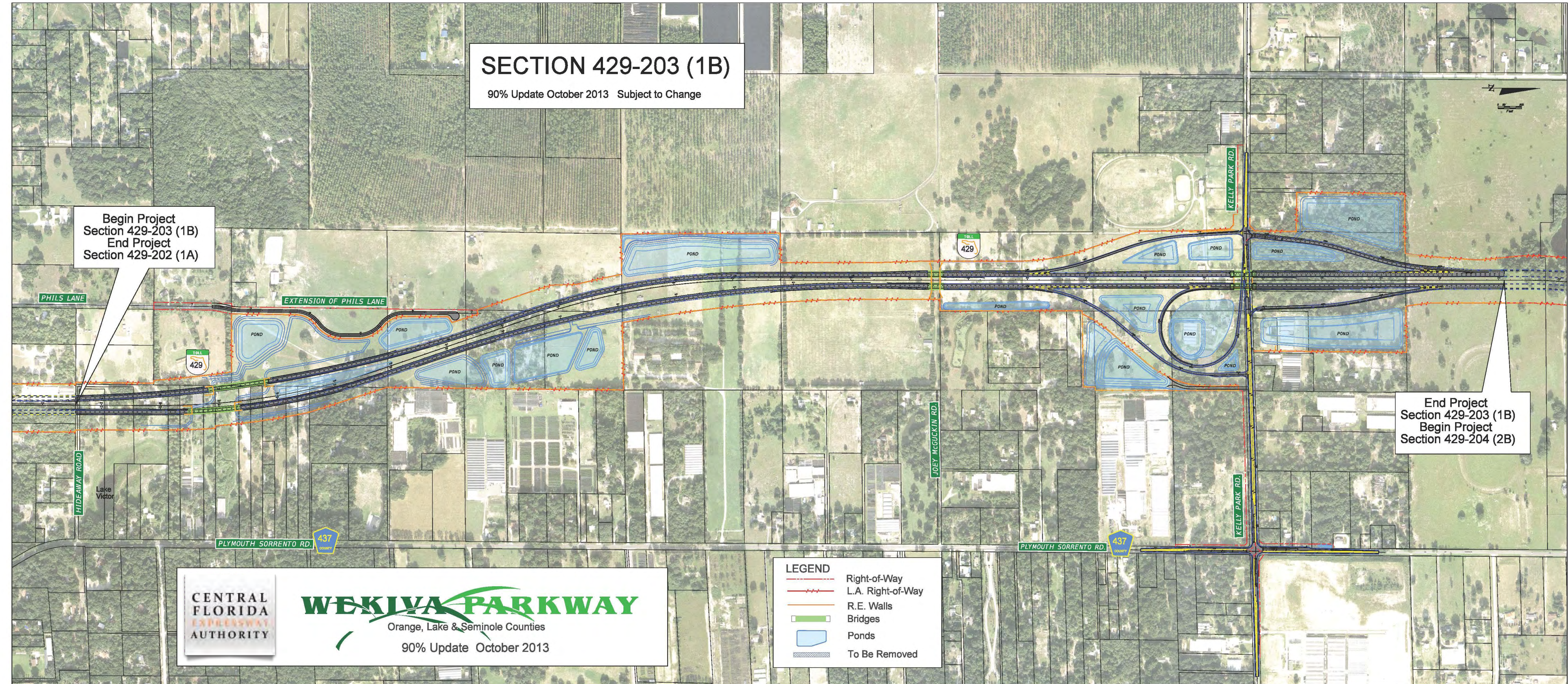
### WEKIVA PARKWAY

Orange, Lake & Seminole Counties

90% Update October 2013

#### LEGEND

-  Right-of-Way
-  L.A. Right-of-Way
-  R.E. Walls
-  Bridges
-  Ponds
-  To Be Removed



# Construction Impacts

## Other Affected Side Streets:

Southfork Dr.  
Kiowa Ave.  
Hideaway Rd.  
Phils Ln.

Plymouth Sorrento Rd.  
Ponkan Rd.  
Kelly Park Rd.



Construction Vehicles  
Detours  
Noise  
Dust  
Night Work

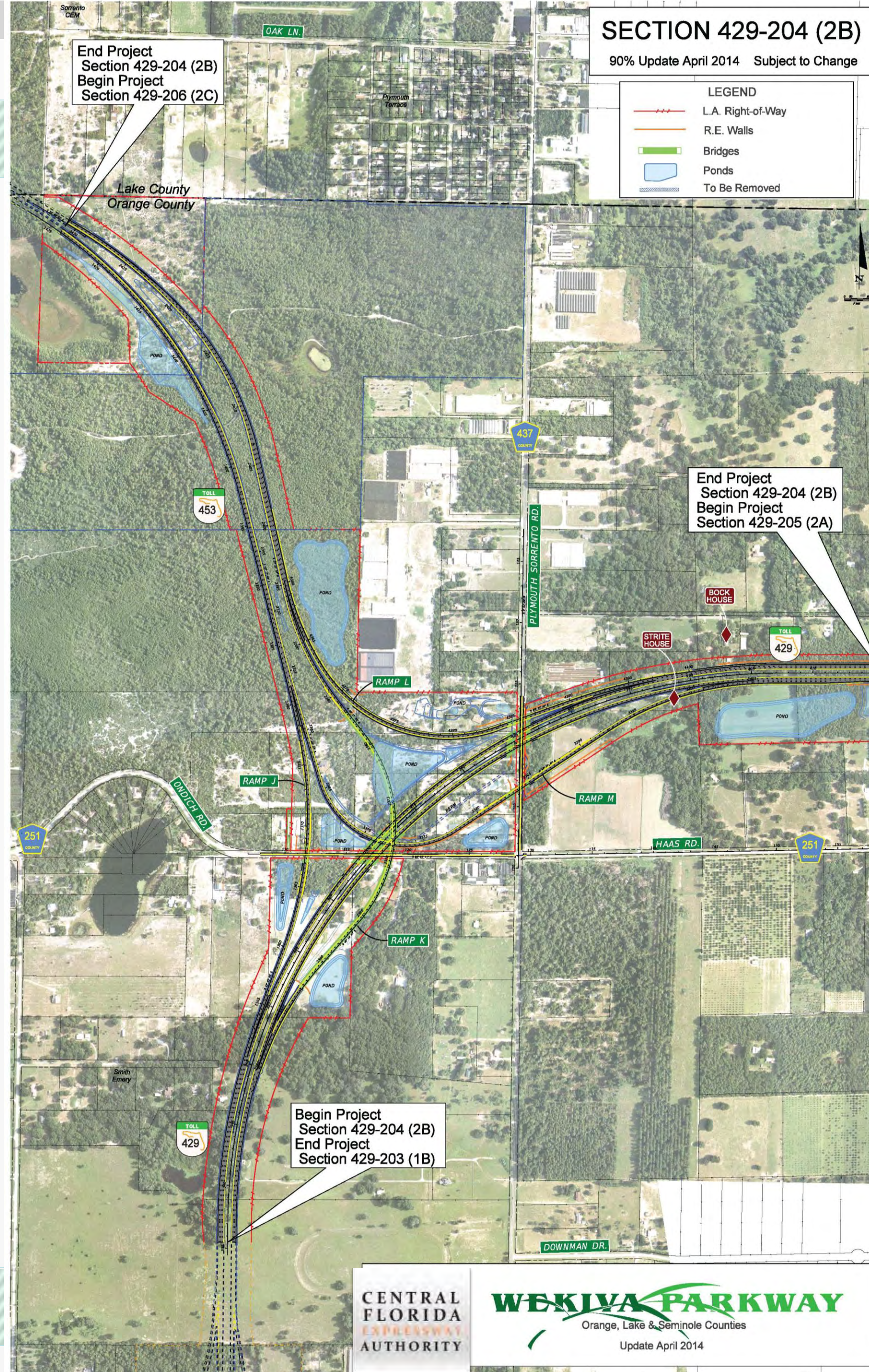
Road & Lane Closures  
Utility Work  
Vibration

- No Pile Driving 10 p.m. – 6 a.m.



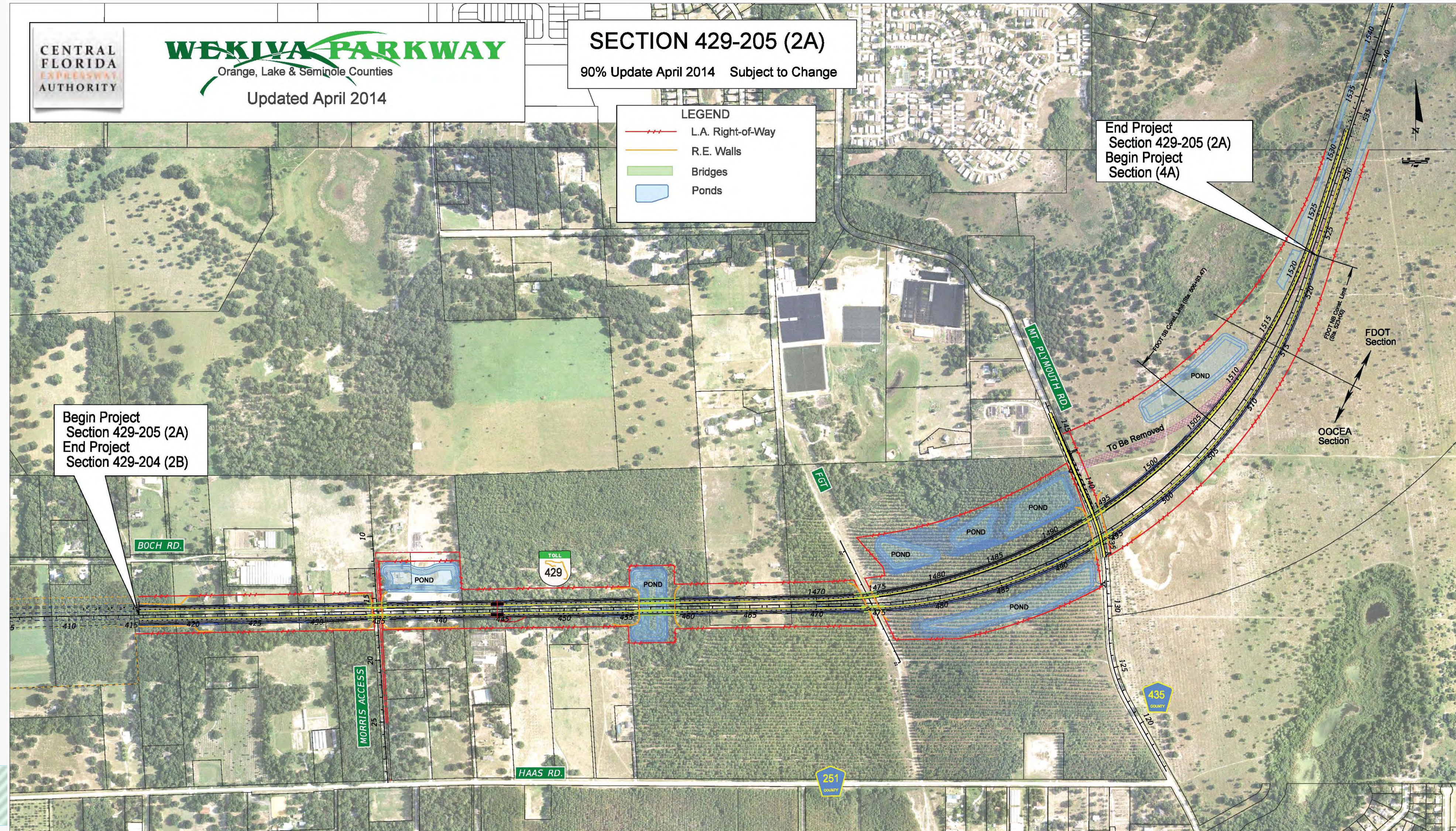
# Section 2B

- Aug.-Sept. – 100% Design Complete
- 2017 – Construction Start



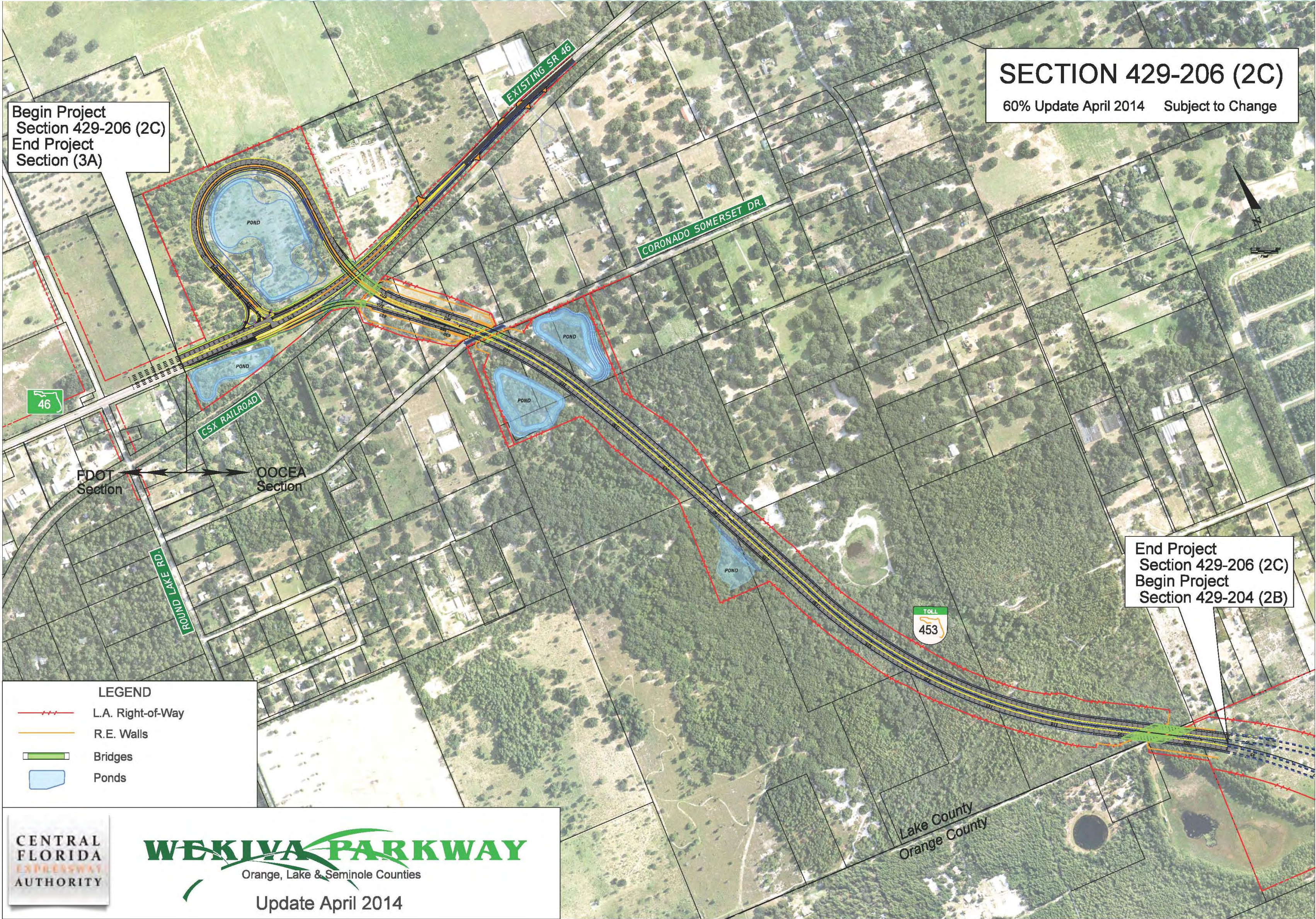
# Section 2A

- June: Design 100% Complete
- 2017: Start Construction

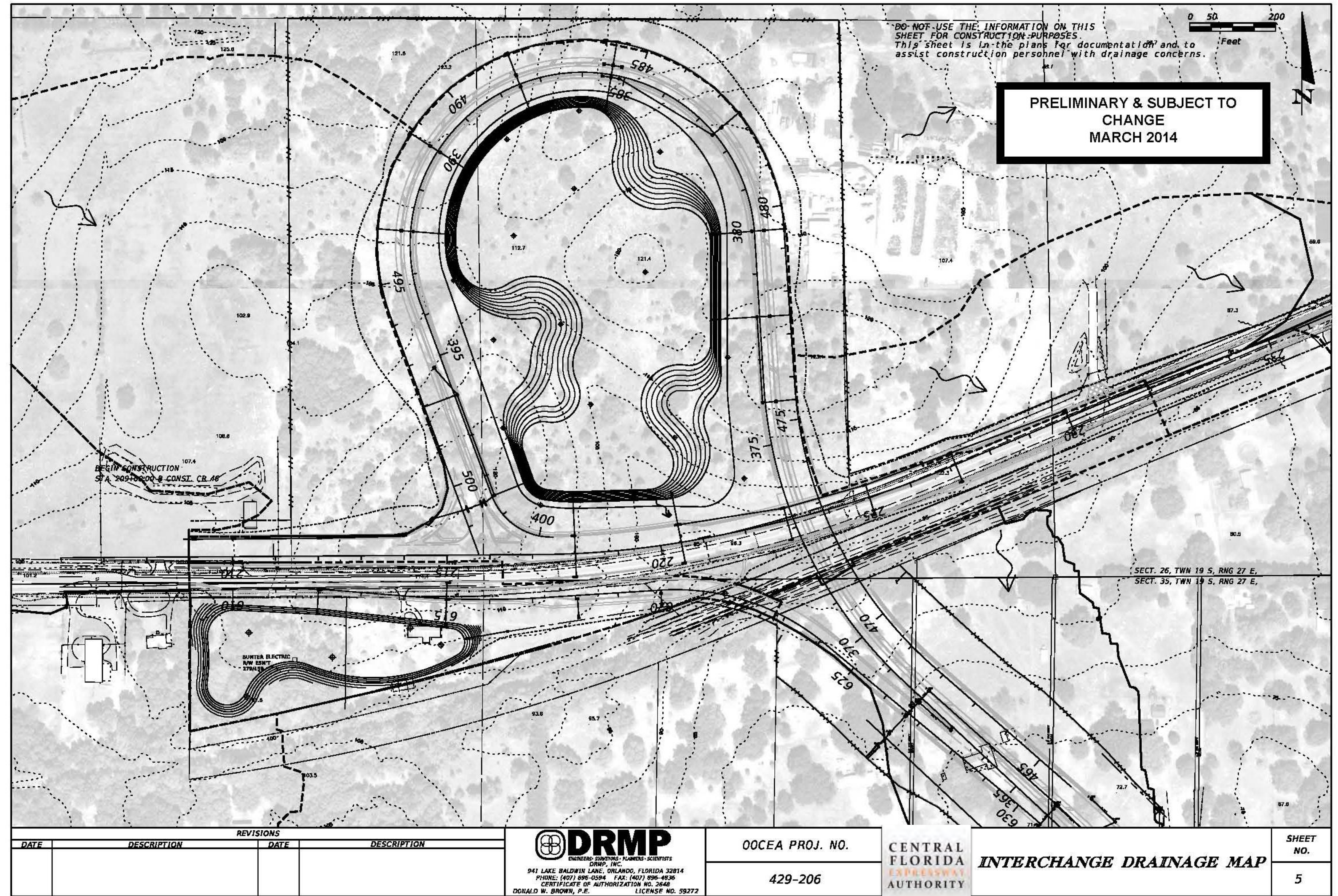


# Section 2C

- Nov. – 100% Design Complete
- 2017 – Start Construction



# Section 2C - Pond Contours



# Section 2C

## - Pond Aesthetics

PRELIMINARY & SUBJECT TO  
CHANGE  
MARCH 2014



# FDOT Sections





# Status - Section 3

## June 24 – Section 3 Public Meeting Open House

### Section 3A – East of Round Lake Rd to East of Vista View Ln

- Aug. – Design 90% Complete
- 2017 – Construction Start

### Section 3B – East of Vista View Ln to SR 46/US 441 Interchange

- Oct. – 90% Design Complete
- 2017 – Construction Start



# Section 3A

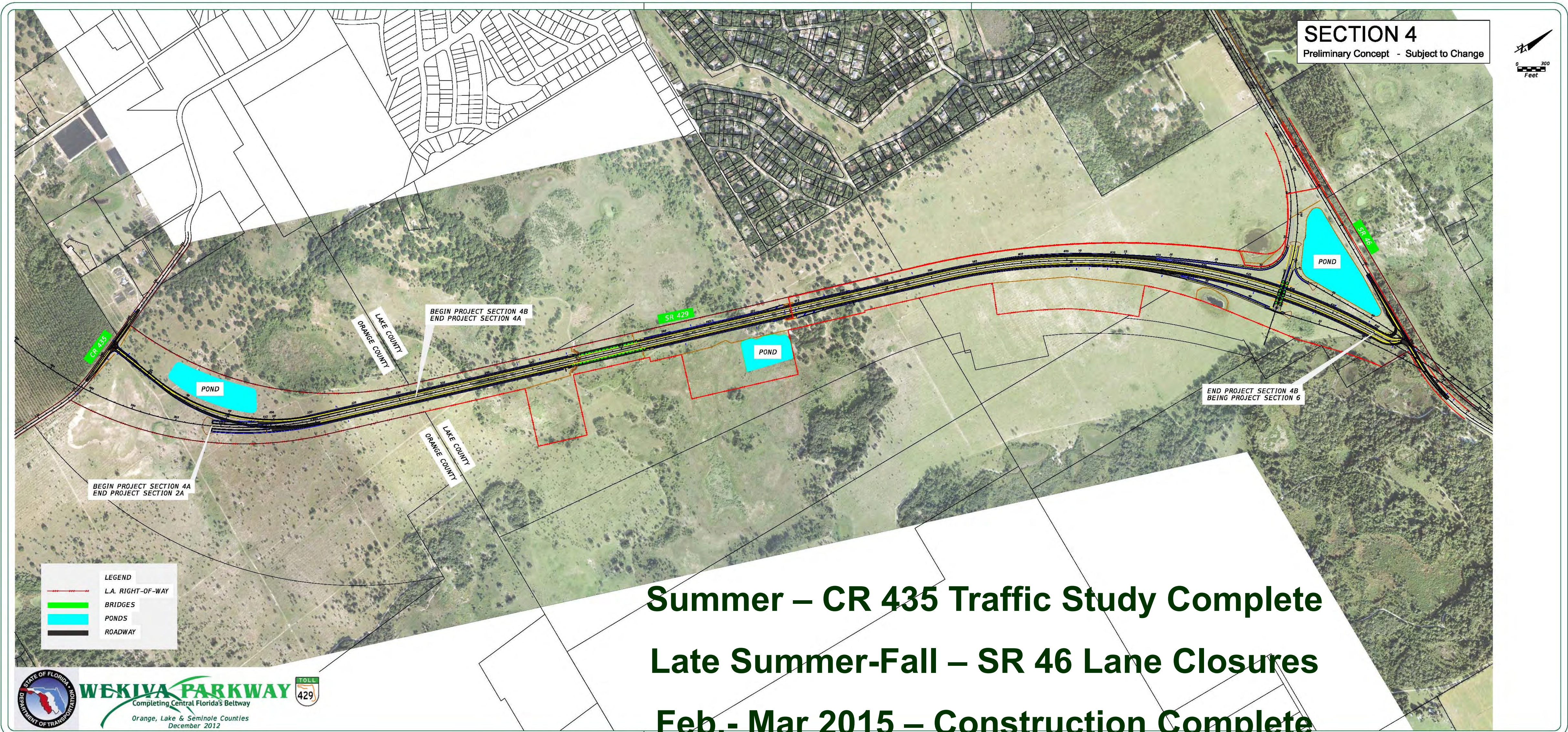


# Section 3B

**FDOT** **WEKIVA PARK**  
Completing Central Florida's Railway  
**SECTION 3B PLAN AND PROFILE**  
**SR 46 FROM WEST OF US 441 TO EAST OF US 46**  
**MARCH 2011**  
**PRELIMINARY - SUBJECT TO CHANGE**



# Section 4A & 4B



**Summer – CR 435 Traffic Study Complete**  
**Late Summer-Fall – SR 46 Lane Closures**  
**Feb.- Mar 2015 – Construction Complete**

# Section 4A & 4B



# Section 4A & 4B



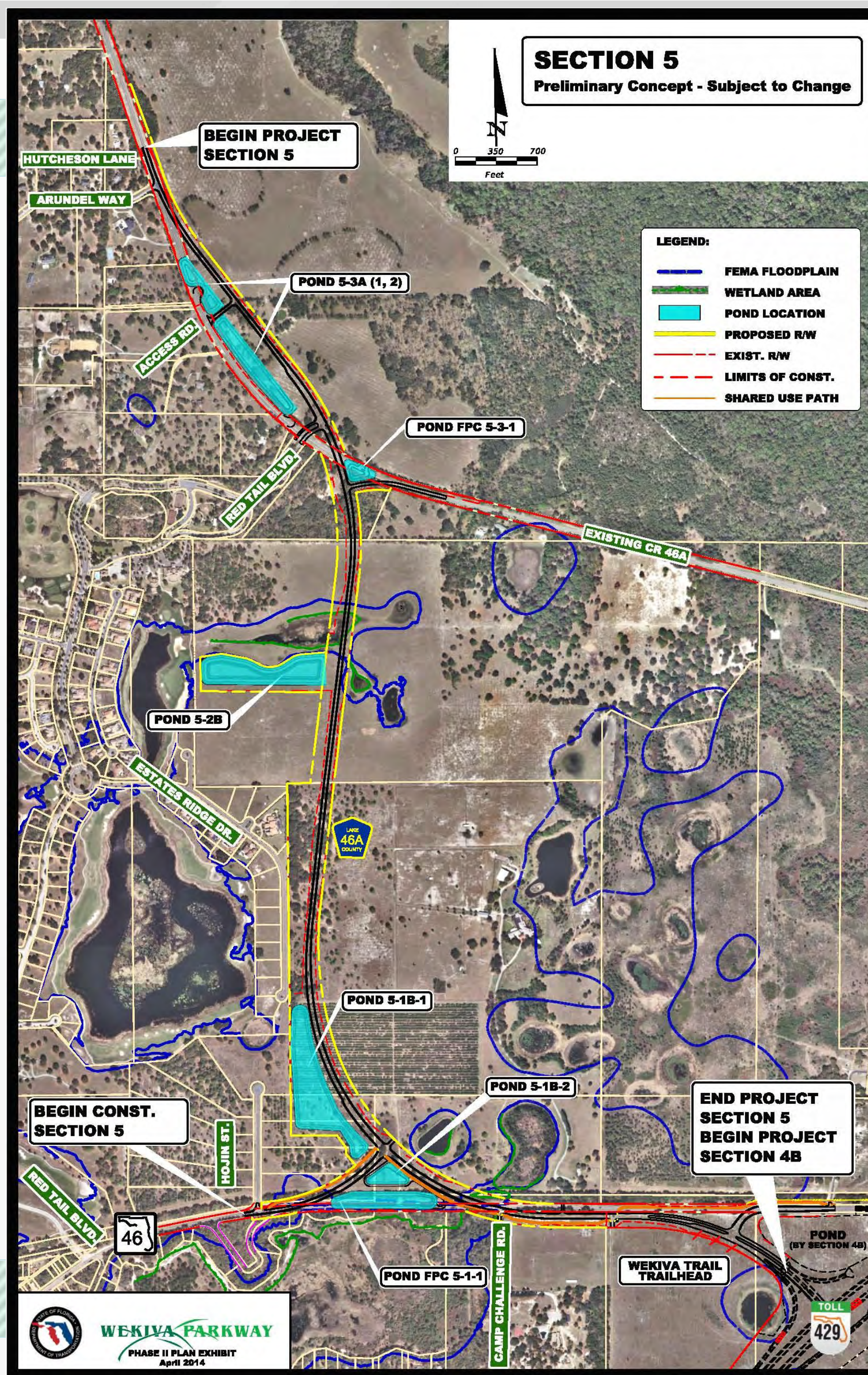
# Section 4A & 4B



# Section 5

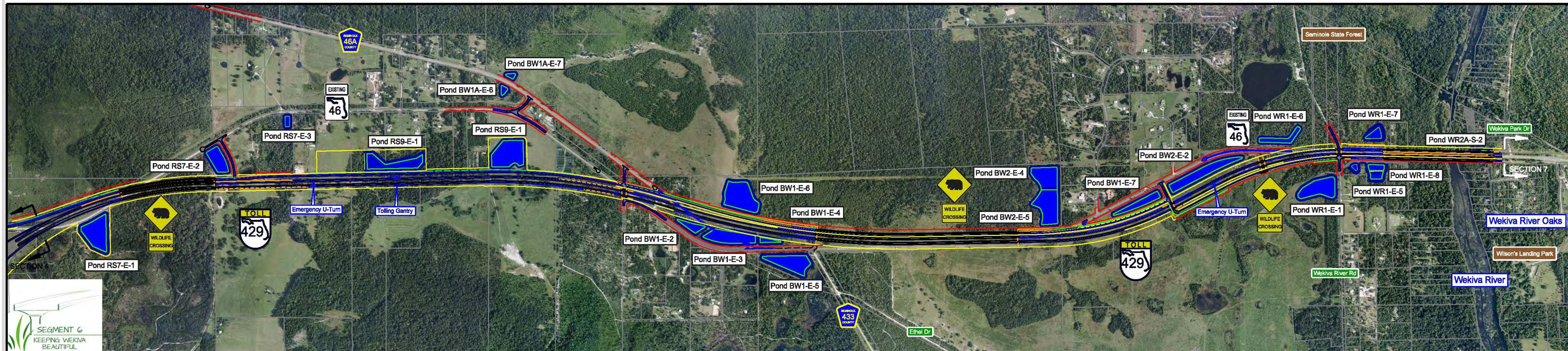
Nov. 2014 - 90% Design Complete

2017 - Construction Start





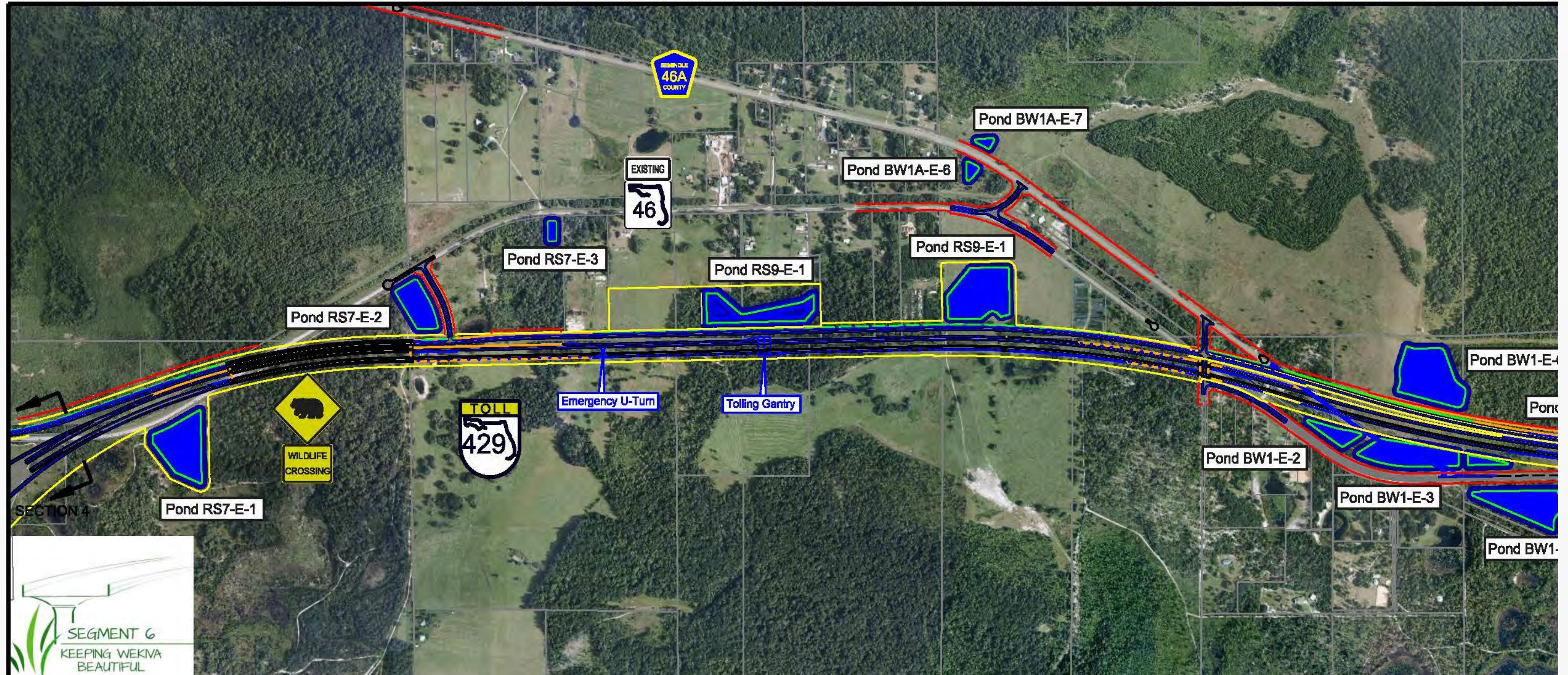
# Section 6



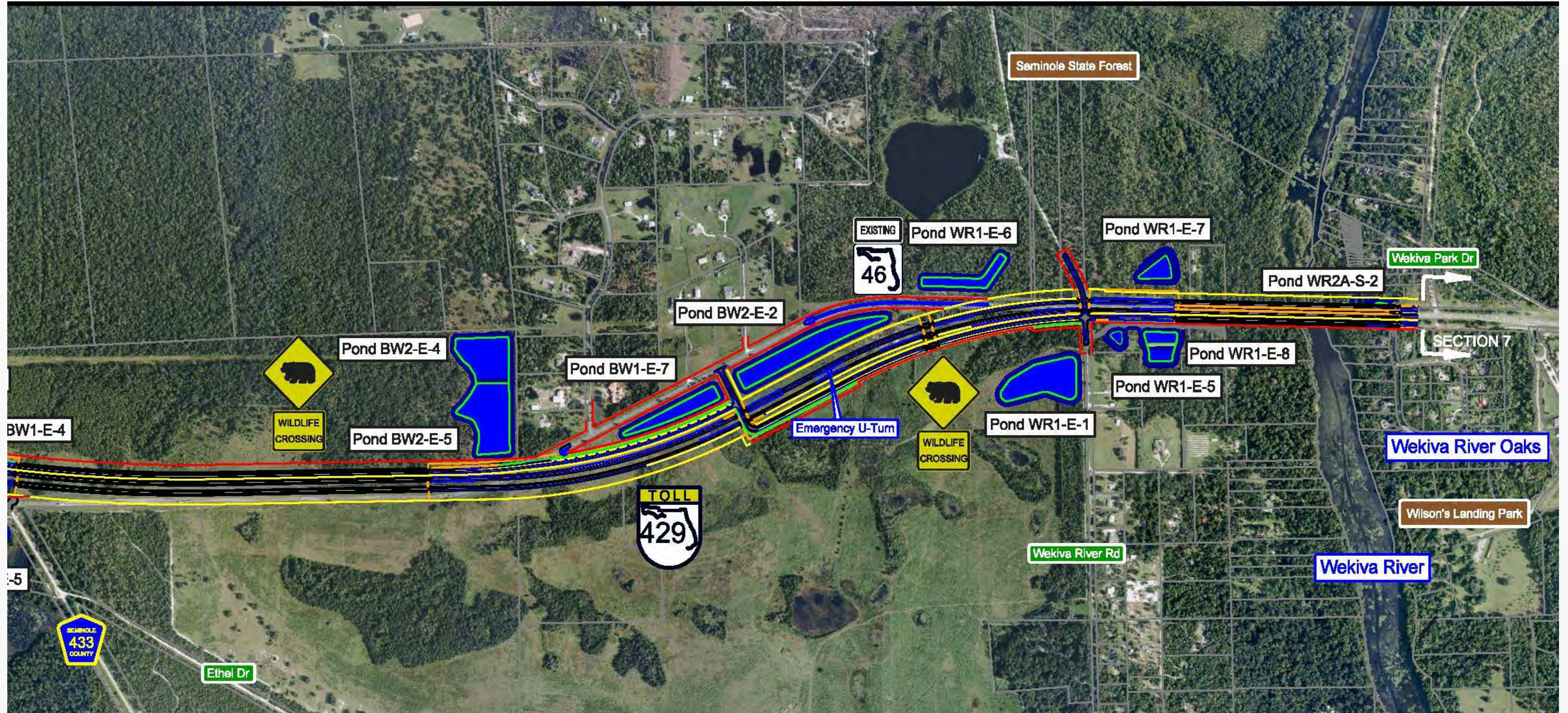
Nov.-Dec. – 60% Design  
2017 – Construction Start



# Section 6 - West



# Section 6 - East



# Section 6 – Bridge Charettes



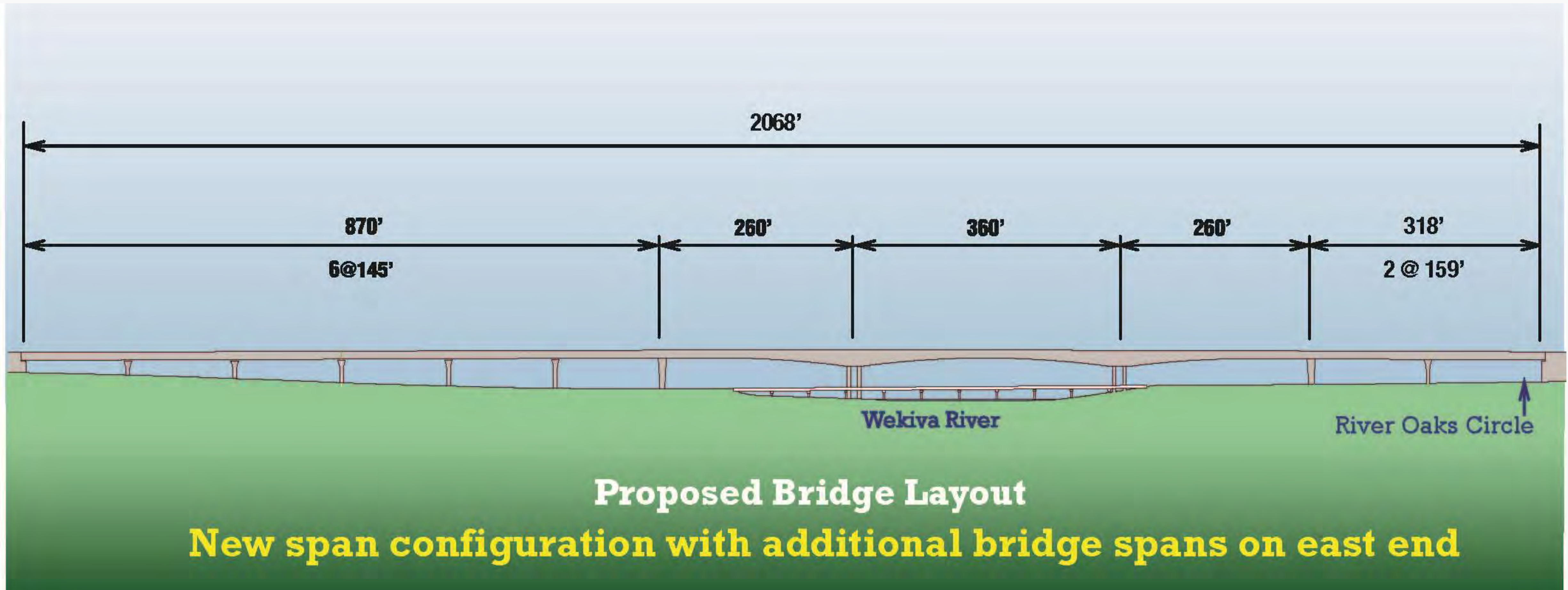
# Wekiva River Bridge - Profile



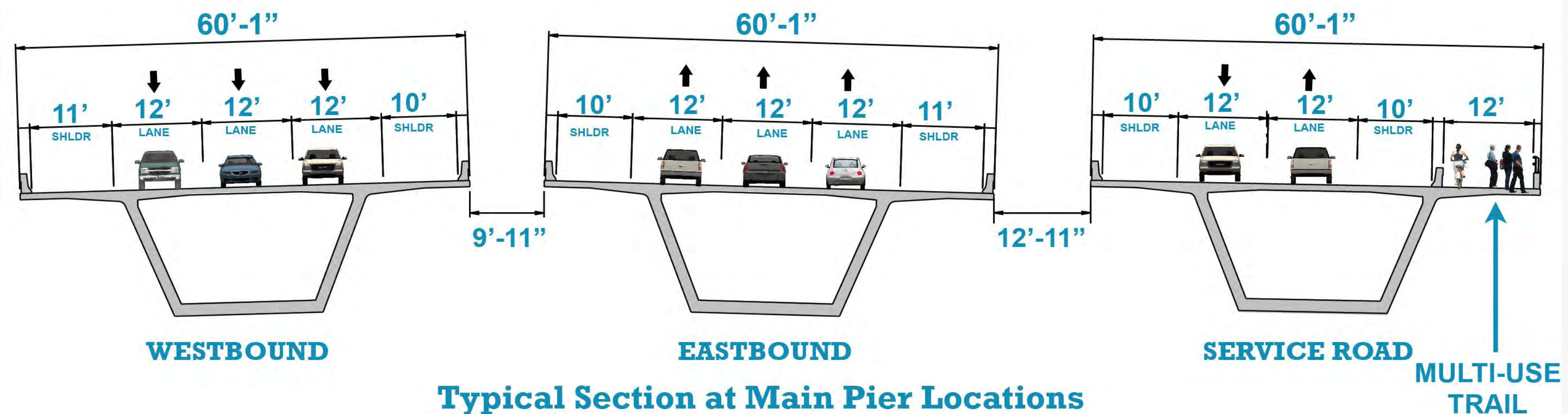
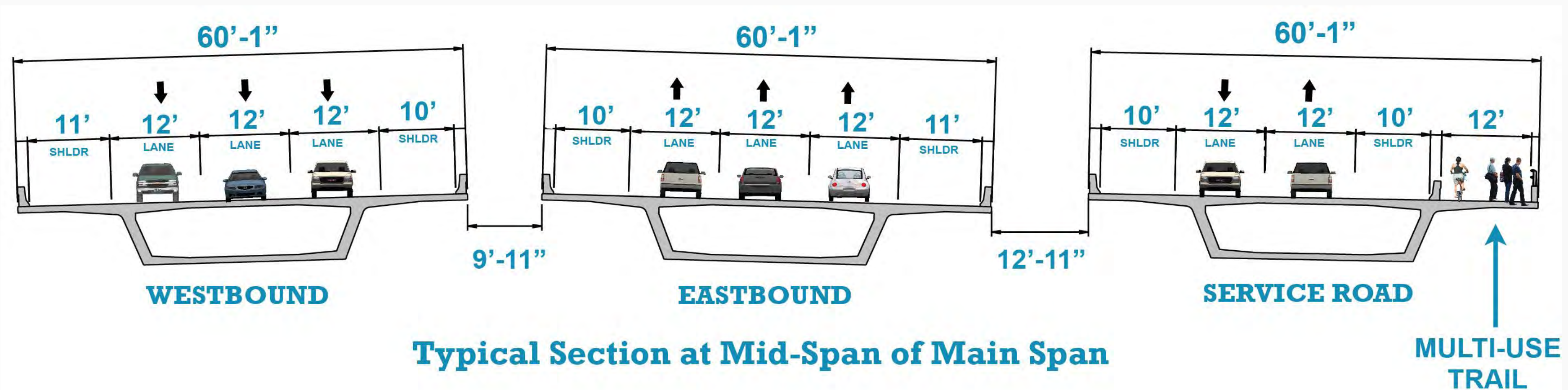
# **Wekiva River Bridges – River User's View**



# Wekiva River Bridge - Layout



# Wekiva River Bridge - Cross Sections



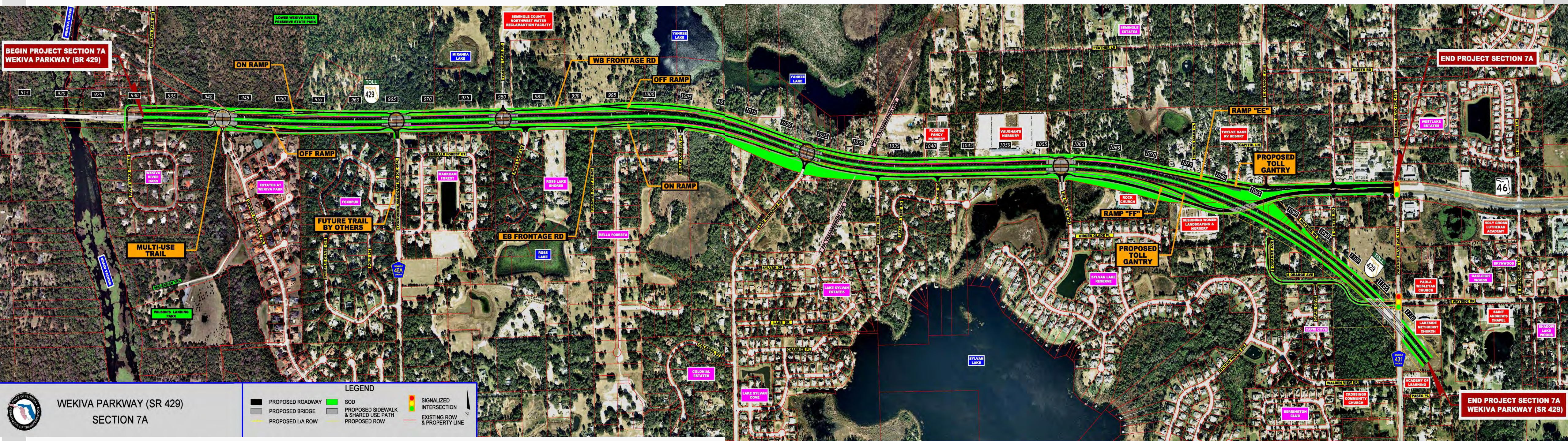
*Showing ultimate configuration.  
Parkway bridges will have 2 lanes in each direction  
for initial configuration.*



# Wekiva River – Ped Rail



# Section 7A



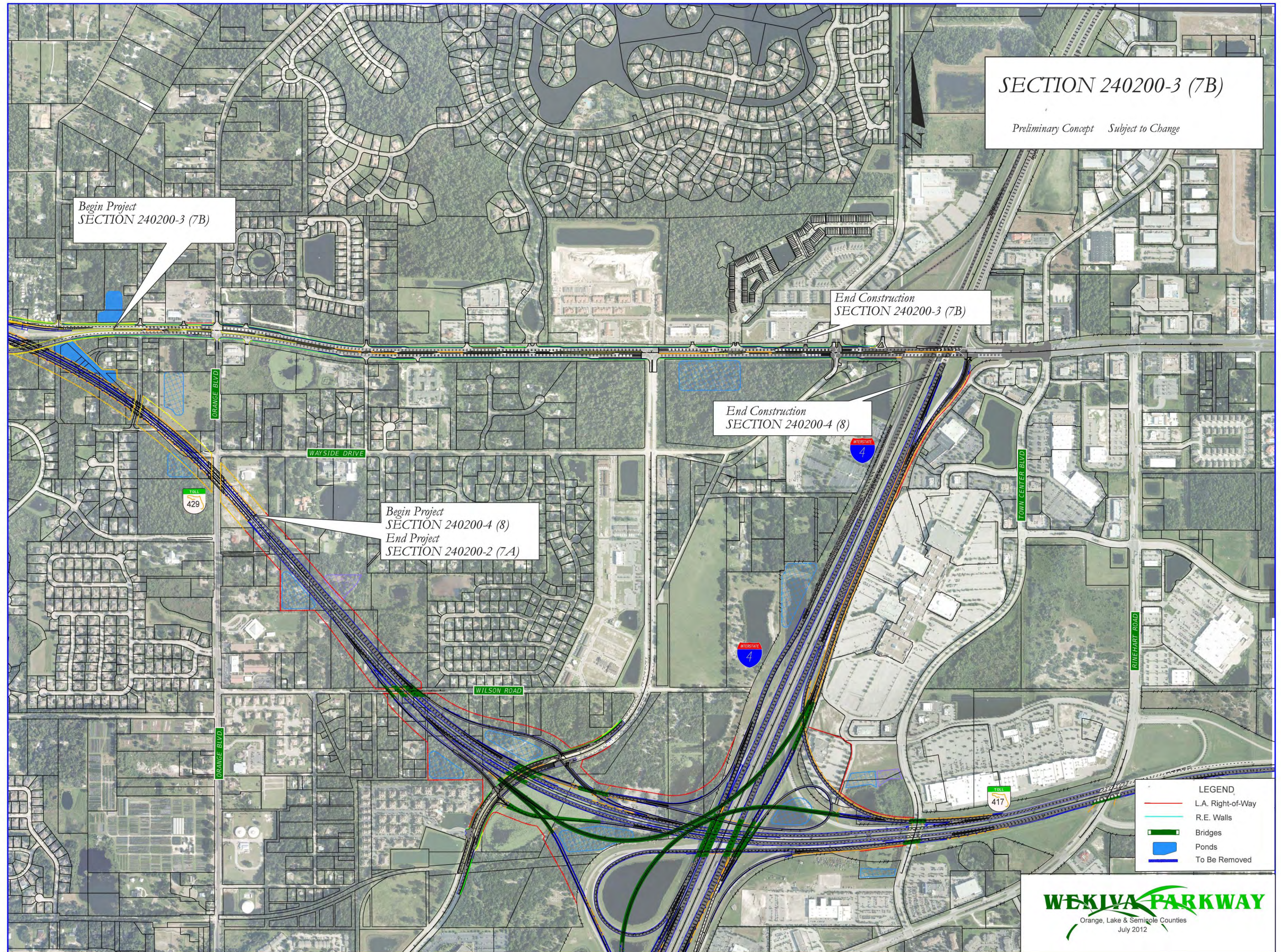
Nov.: 60% Design Complete  
2017-2018: Construction Start

# Section 7A – Roundabout Concept



**Section 7B:  
2017 – Construction  
Start**

**Section 8:  
2018 – Construction  
Start**



# What's Next?

- **Final Design: Completion 2015**
- **Opportunities for Community Input**

**Public Meetings: Section 1A & 1B – Late Sept. 2014**  
**Section 7A – Late 2014**

Community Presentations

Updates & Comments via Website: [www.wekivaparkway.com](http://www.wekivaparkway.com)

- **First Section (4A & 4B) Open to Traffic – Early 2015**
- **First CFX Sections Begin Construction – Early 2015**



# WEKIVA PARKWAY

Completing Central Florida's Beltway



2020

2019-20

2020-21

2021

2015

2019

2019

2019

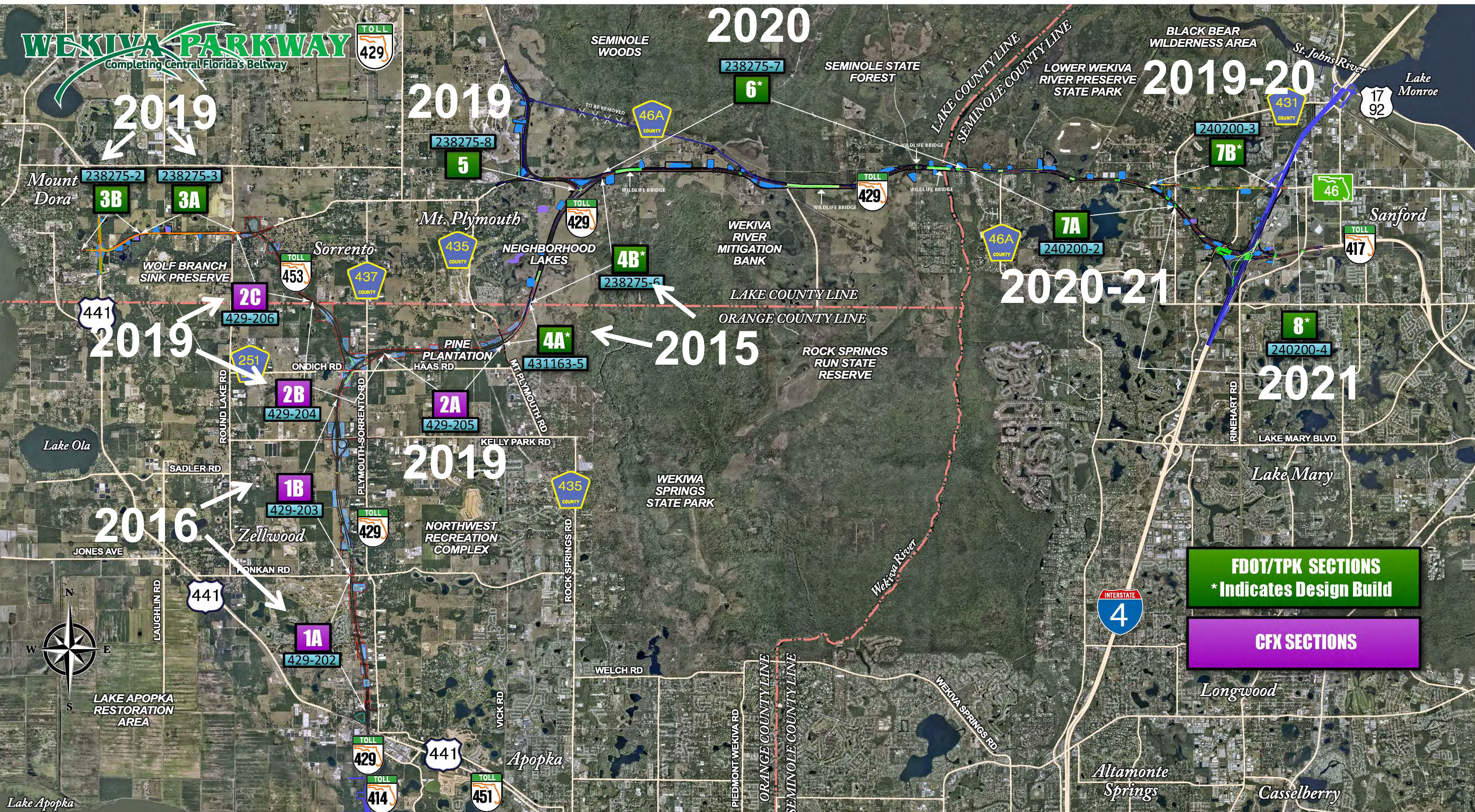
2019

2016



**FDOT/TPK SECTIONS**  
\* Indicates Design Build

**CFX SECTIONS**



## For More Information:

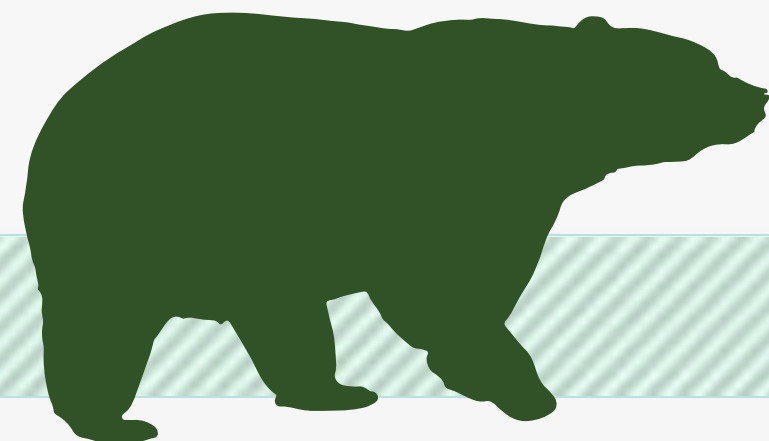
### Mary Brooks

### Public Involvement Coordinator

### C: 407-694-5505

### E: [Info@wekivaparkway.com](mailto:Info@wekivaparkway.com)

### W: [www.wekivaparkway.com](http://www.wekivaparkway.com)



The screenshot displays the Wekiva Parkway website with the following content:

- Header:** WEKIVA PARKWAY logo, "Completing Central Florida's Beltway", and "429" shield.
- Navigation:** HOME, FOOT SECTIONS, CFX SECTIONS, SECTIONS BY COUNTY, PROJECT HISTORY, FAQ, CONTACT US.
- WELCOME:** A paragraph of introductory text and a list of project highlights:
  - Widening section (7 miles) of SR 49 in Lake and Seminole Counties
  - Rebuilding the US 401/SR 49 interchange in Mount Dora
  - Splitting the SR 440 connection to SR 49 so wildlife can move more safely between habitats
- WEEKLY PARKWAY PROJECT SECTION MAP:** A map of the project area with numbered sections (1-10) and a legend for "FUTURE SECTION" and "EXISTING SECTION".
- CONTACT US:** Mary Brooks, Public Information Officer, [Info@wekivaparkway.com](mailto:Info@wekivaparkway.com), 407-694-5505.
- Footer:** "HELPFUL LINKS" (Central Florida Expressway Authority, Florida Department of Transportation, Florida's 311, SunRail, I-4 Police, FDOT Central Florida Project, Florida's Wildlife Escapes), "FOLLOW US" (Facebook, Twitter), and copyright information.

# WEKIWA PARKWAY

Completing Central Florida's Beltway



**Thank You!**

**Questions?**

