

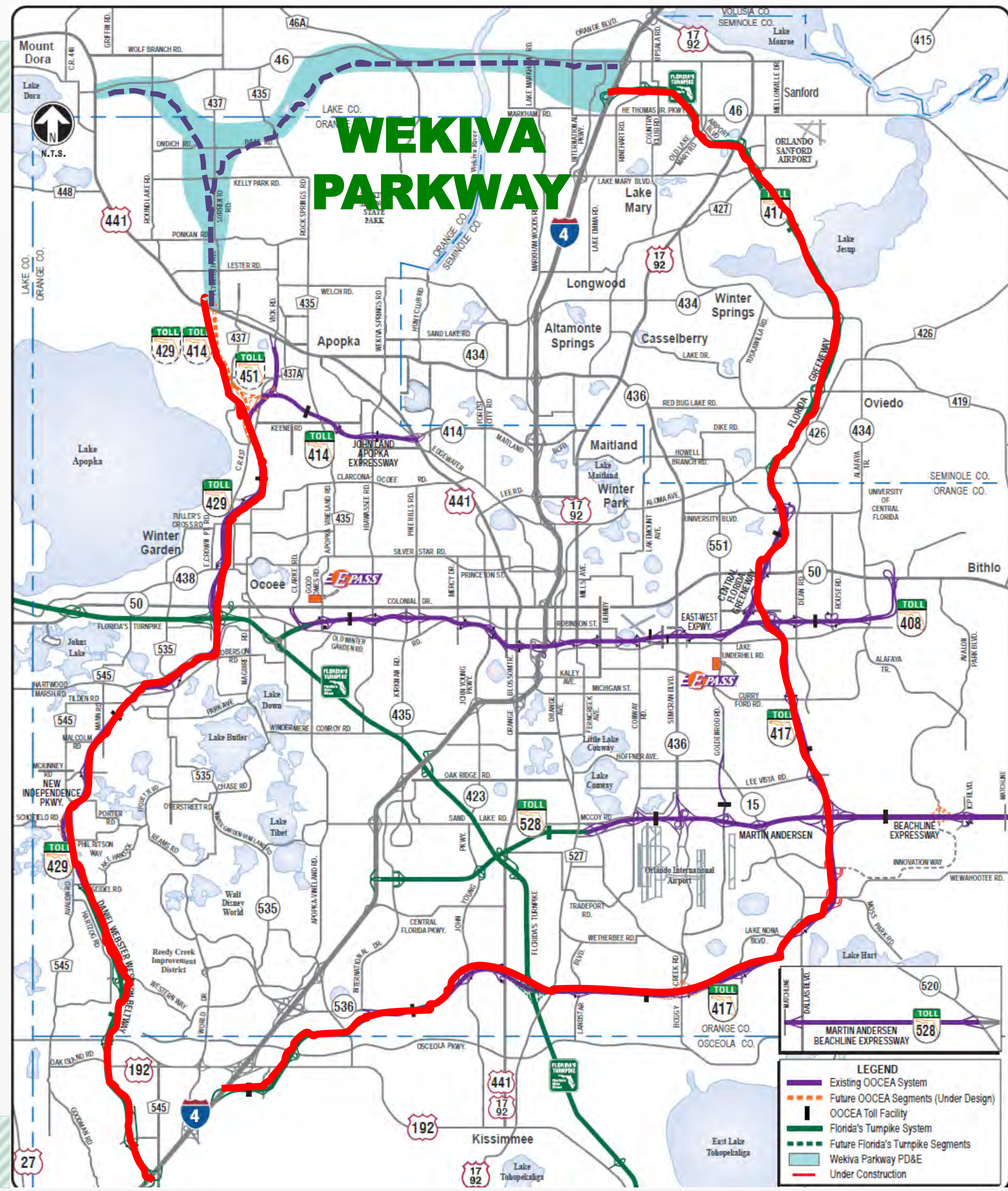


A Regional Transportation Solution

**Sylvan Lake Reserve
HOA Board
Jan. 20, 2015**



WEKIVA PARKWAY



WEKIVA PARKWAY

Project Description

- **\$1.6 Billion Completion of Central Florida's Beltway**
- **25-mile Toll Road**
- **Non-Toll Road Improvements:**
 - **Improving SR 46 in Lake & Seminole Counties**
 - **Rebuilding the US 441/SR 46 Interchange in Mount Dora**
 - **Relocating CR 46A to Improve Wildlife Connectivity**
 - **Parallel Service Roads in East Lake & Seminole Counties**
- **Multi-use Trail (Parts of East Lake & Seminole Counties)**

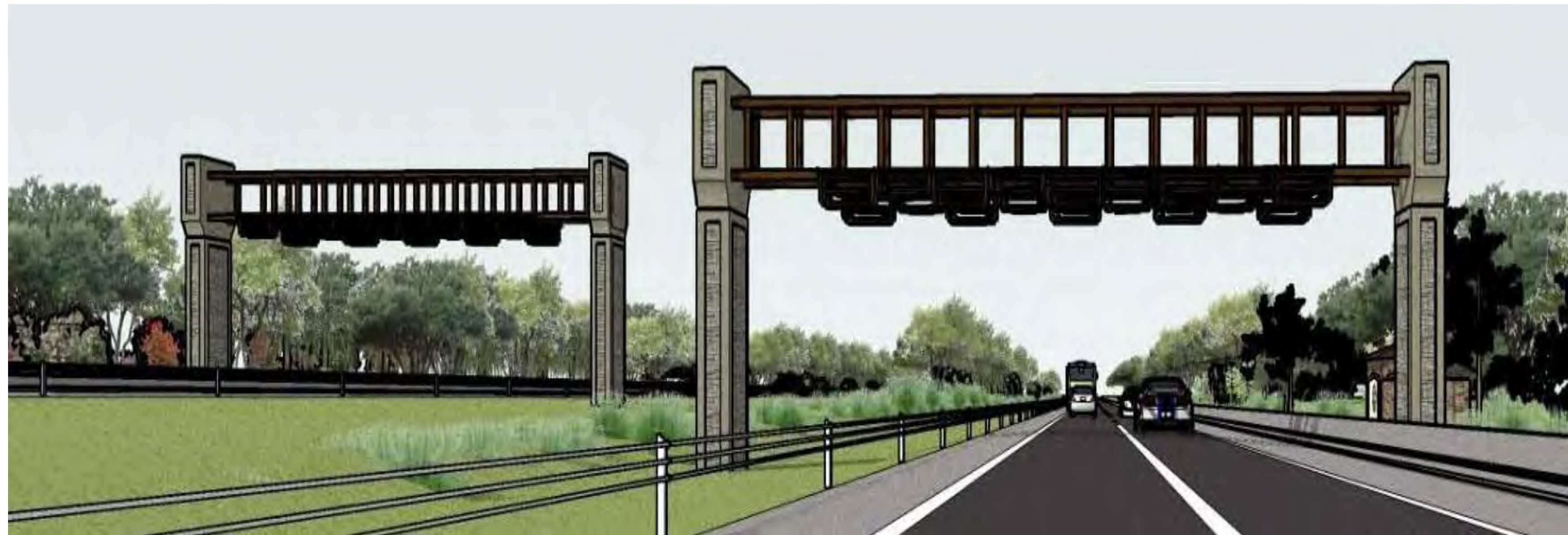
WEKIIVA PARKWAY



All Electronic Tolling (AET)

- First in Central Florida
- No Toll Plazas – No Cash
- Enhances Safety
- Maximizes Convenience
- AET Info on Website

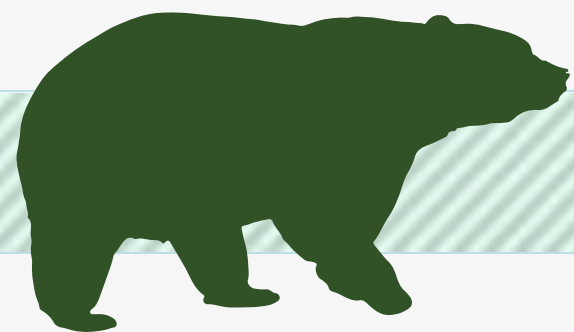
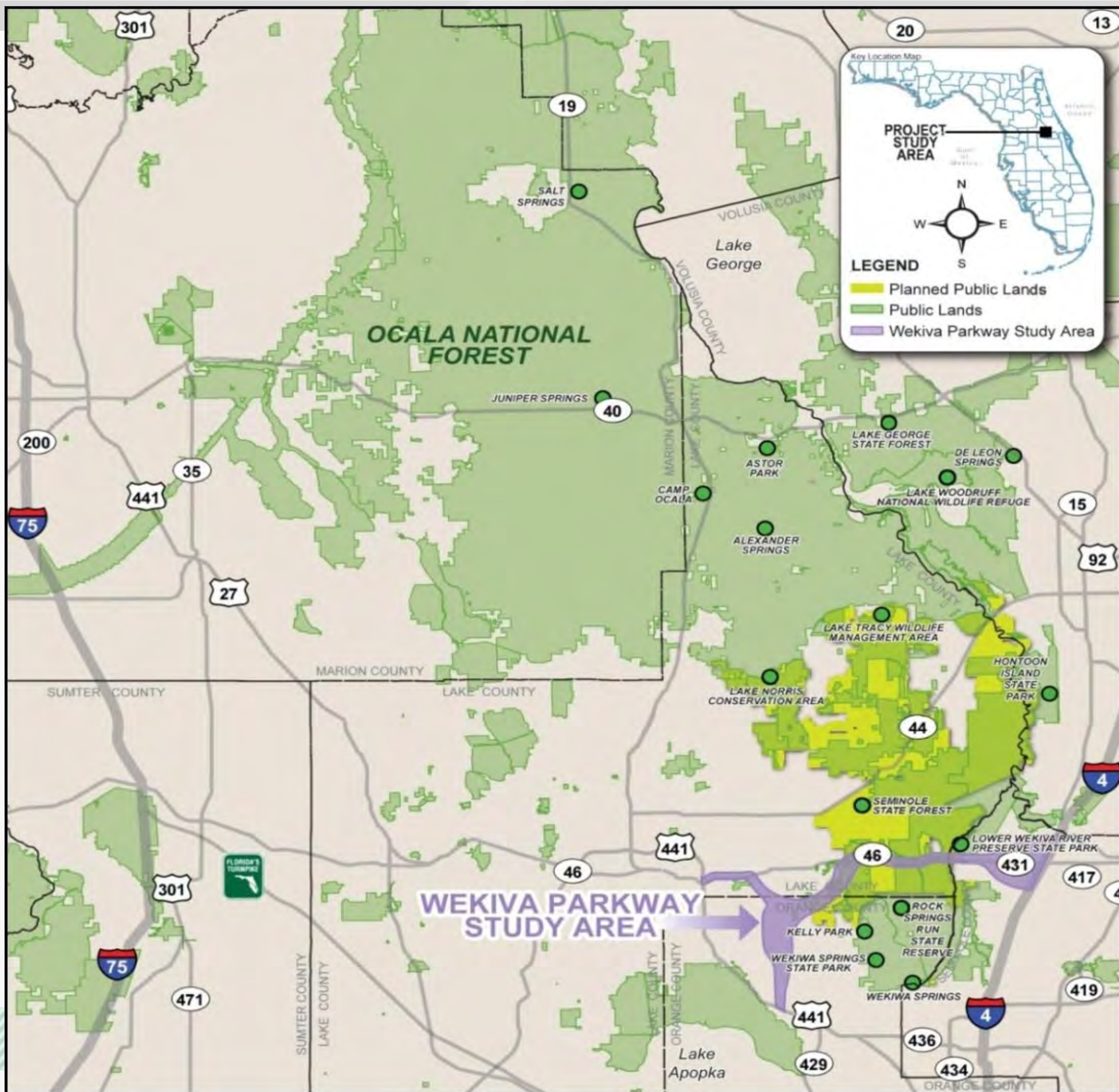
- Reduces Noise & Pollution
- Improves Mobility
- Saves Money



Protecting Nature

- **Wekiva River: Outstanding Florida Water & National Wild & Scenic River**
- **Authorized by the 2004 Wekiva Parkway and Protection Act**
 - **Setting Aside More than 3,400 Acres for Conservation**
 - **Largely Elevated to Reduce Accidents Between Vehicles & Wildlife**
 - **Several Wildlife Bridges**
 - **Few Interchanges (Reduce Development)**





WEKIWA PARKWAY

Wekiva Parkway Trail

10 Miles

Concurrent: Sections 5, 6 & 7A

✓ **2017-2021**

Separate: Sections 4A & 4B

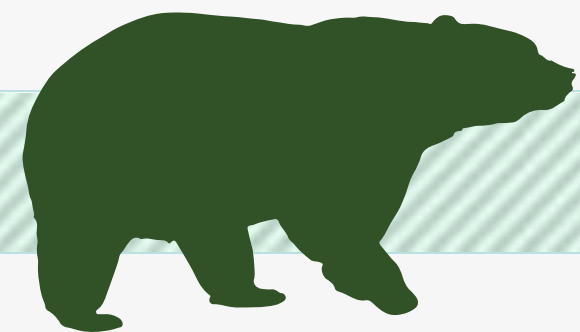
✓ **2017-2021**

Connections:

✓ **West Orange Trail Extension**

✓ **Lake-Wekiva Trail (Planned)**

✓ **Seminole-Wekiva Trail Extension**



PROJECT ECONOMIC IMPACT

At an estimated cost of \$1.6 Billion for Engineering & Construction, the Wekiva Parkway is Projected to Provide:

Construction Related Jobs	12,272
Supporting Industries Jobs	5,570
Induced Employment Jobs	17,983

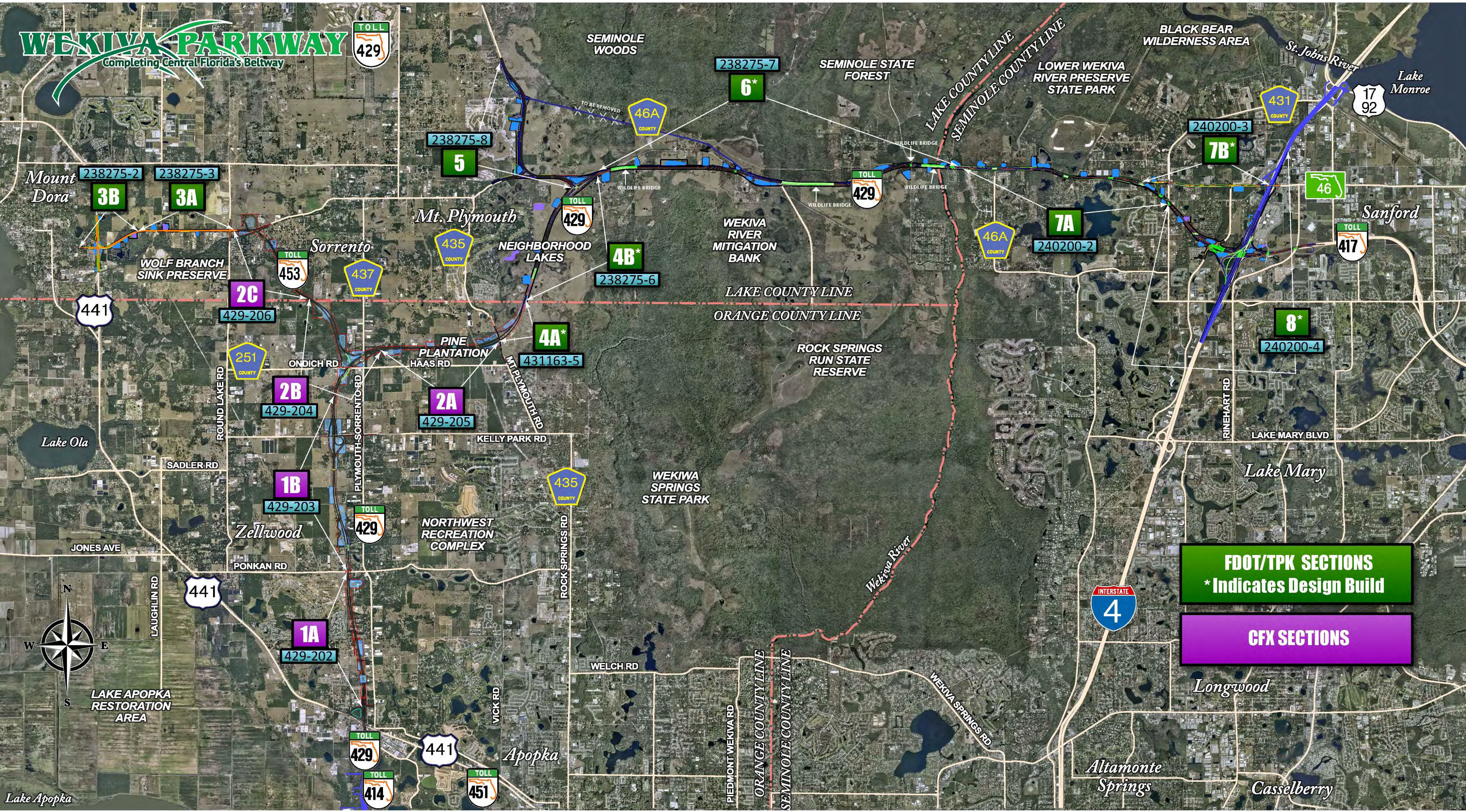
***Estimated Total Jobs 35,825**

*Job Multiplier Source: Federal Highway Administration (FHWA) Employment Impacts of Highway Infrastructure Investment; Updated March 2010



WEKIVA PARKWAY

Completing Central Florida's Beltway



FDOT/TPK SECTIONS
* Indicates Design Build

CFX SECTIONS



Lake Apopka

Design Status

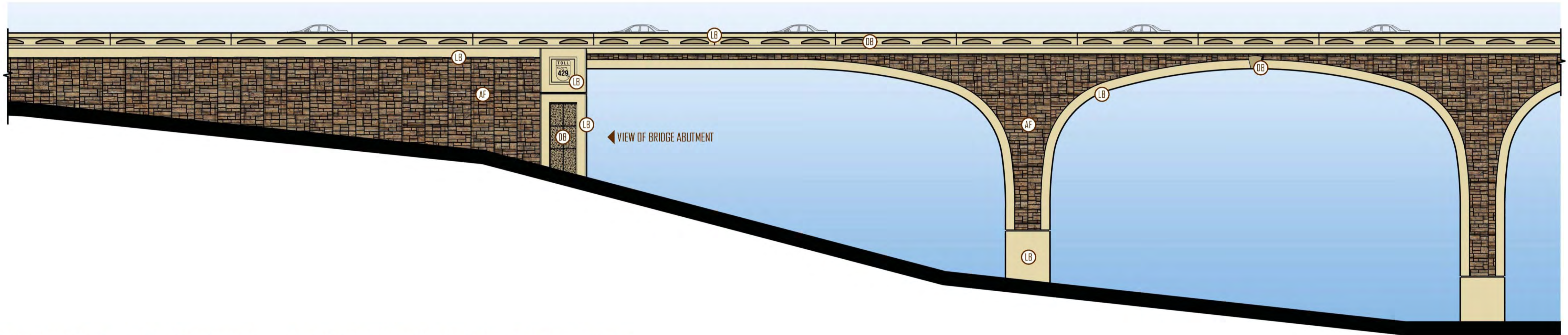
SECTION	MILESTONE	SUBMITTAL SCHEDULE
1A	100%	July 2014
1B	100%	June 2014
2A	100%	June 2014
2B	100%	March-April 2014
2C	100%	January 2015
3A	100%	December 2014
3B	90%	January 2015
5	90%	December 2014
6	60%	February-March 2015
7A	60%	February 2015
7B	Design Starts 2016	Construction 2018
8	Design-Build	Construction 2018



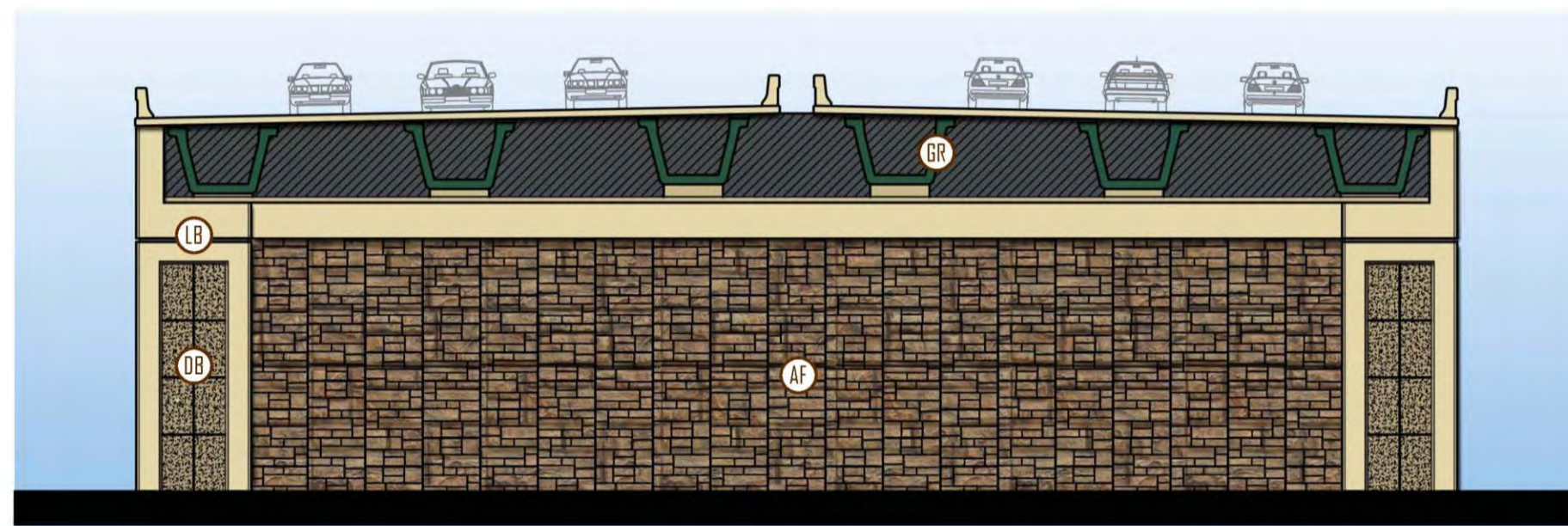
Central Florida Expressway Authority Sections



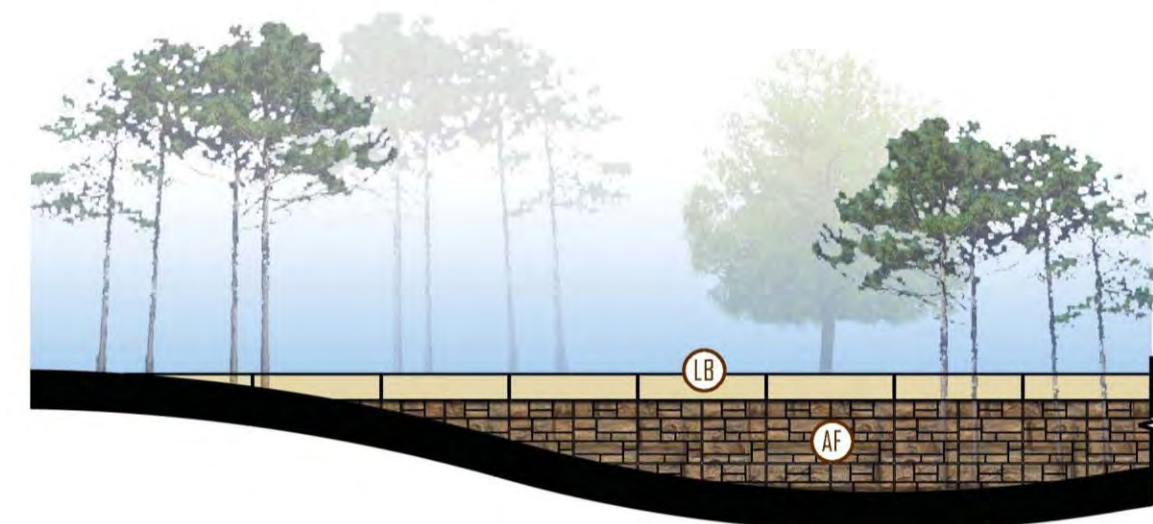
Aesthetics Plans



LOW AREA/LAKE VICTOR - BRIDGE MSE WALL ELEVATION NOT TO SCALE



LOW AREA/LAKE VICTOR
BRIDGE MSE WALL ABUTMENT ELEVATION NOT TO SCALE



TIERED / LANDSCAPE WALL NOT TO SCALE

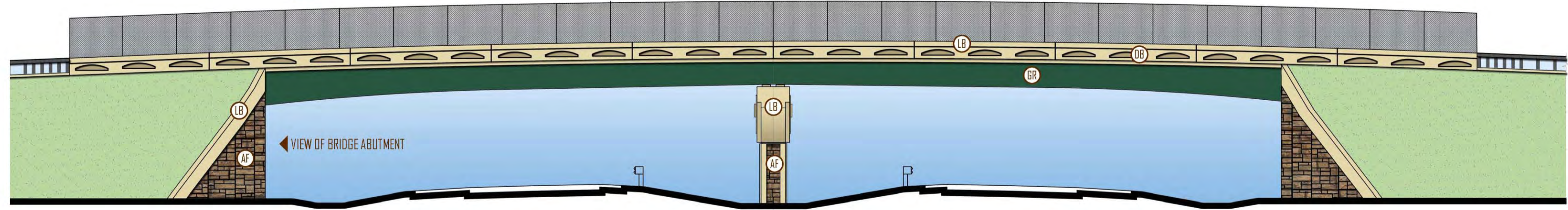
LEGEND

- LARGE ASHLAR FORMLINER
 PATTERN: CUSTOMROCK #1501-R2
 MAX. RELIEF = 2"
 BASE COLOR: FED. COLOR #33510
 HIGHLIGHTS: #SW-2195 [50-60%]
 #SW-2124 [10-20%]
 #SW-2070 [WASH COAT]
- LB LIGHT BROWN (FED. COLOR #33690)
 FINISH: SMOOTH / LIGHT SANDBLAST
- DB DARK BROWN (FED. COLOR #33446)
 FINISH: SMOOTH / LIGHT SANDBLAST
- GR DARK GREEN (FED. COLOR #34227)
- BR DARK BRONZE (FED. COLOR #20062)

NOTES: ALL COLORS ARE FEDERAL STANDARD 595B (7/1994) COLORS OR SHERWIN WILLIAMS (SW) COLORS.

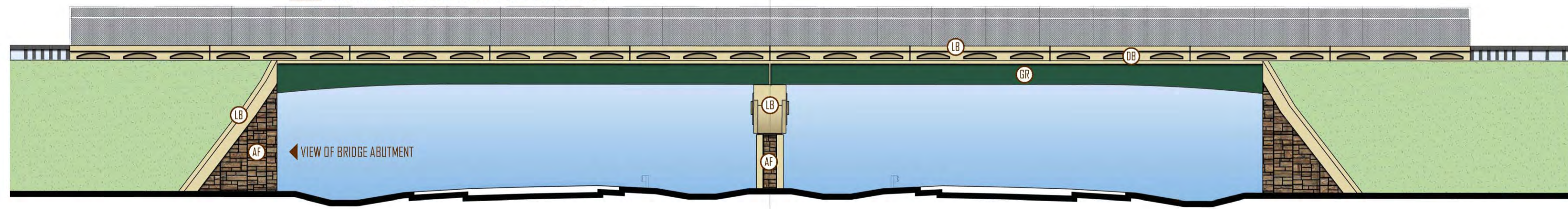
Aesthetics Plans

FENCE TYPE: FOOT INDEX 810 FENCE (VERTICAL)
FINISH: VINYL COATED
COLOR: DARK BROWN (SUBMIT SAMPLE FOR OWNER REVIEW AND APPROVAL)

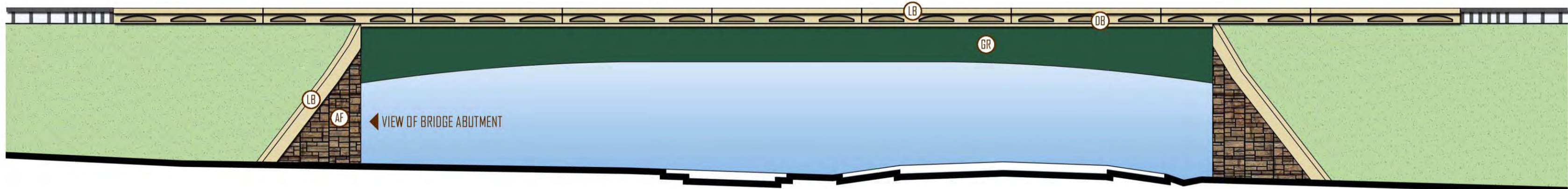


BELGIAN STREET BRIDGE NOT TO SCALE

FENCE TYPE: FOOT INDEX 811 FENCE (CURVED TOP)
FINISH: VINYL COATED
COLOR: DARK BROWN (SUBMIT SAMPLE FOR OWNER REVIEW AND APPROVAL)



YOTHERS ROAD BRIDGE NOT TO SCALE



KELLY PARK ROAD BRIDGE NOT TO SCALE

LEGEND

LARGE ASHLAR FORMLINER
 PATTERN: CUSTOMROCK #1501-R2
 MAX. RELIEF = 2"
 (AF) **BASE COLOR:** FED. COLOR #33510
HIGHLIGHTS: #SW-2195 [50-60%]
 #SW-2124 [10-20%]
 #SW-2070 [WASH COAT]

(LB) **LIGHT BROWN (FED. COLOR #33690)**
 FINISH: SMOOTH / LIGHT SANDBLAST

(DB) **DARK BROWN (FED. COLOR #33446)**
 FINISH: SMOOTH / LIGHT SANDBLAST

(GR) **DARK GREEN (FED. COLOR #34227)**

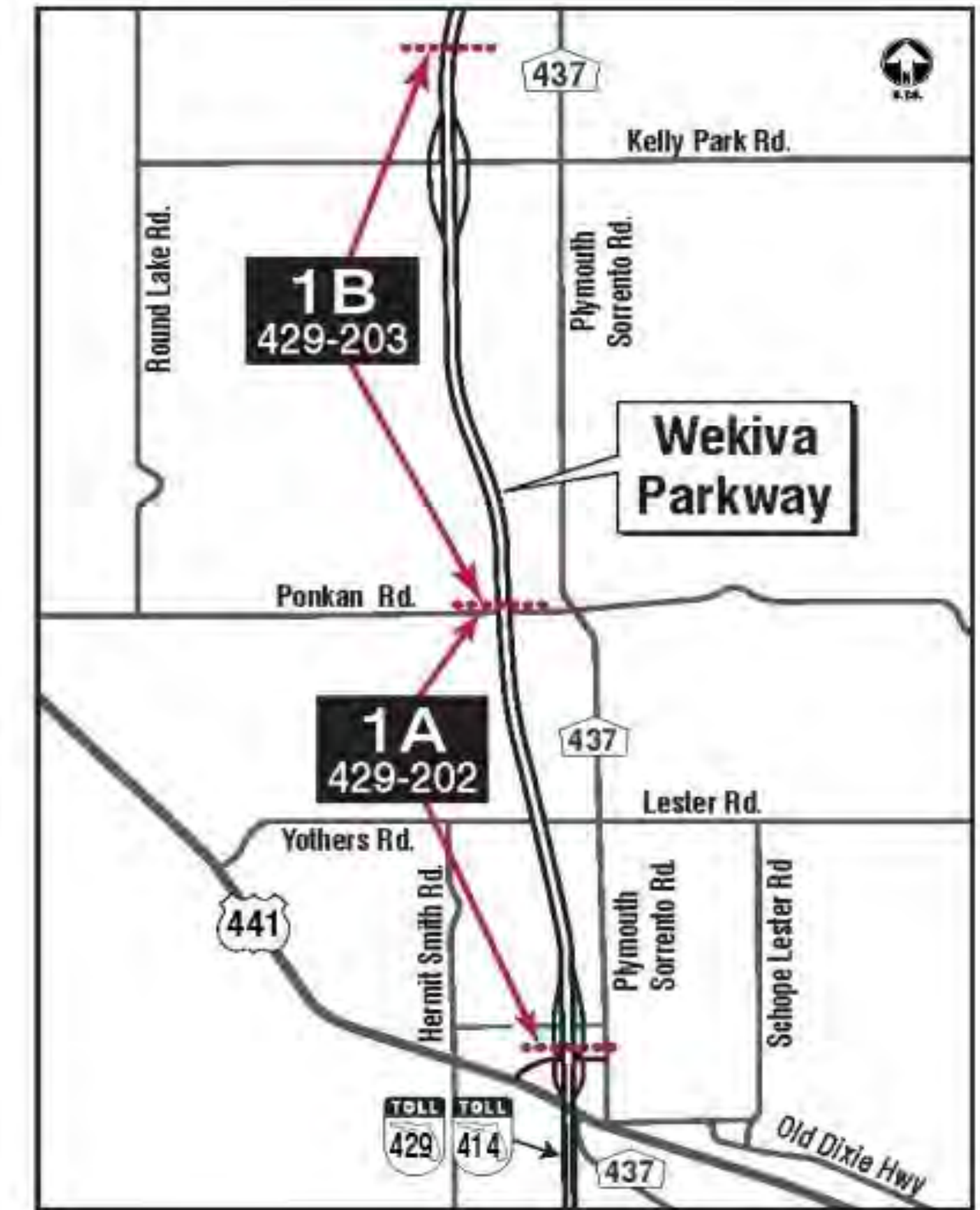
(BR) **DARK BRONZE (FED. COLOR #20062)**

NOTES: ALL COLORS ARE FEDERAL STANDARD 595B (7/1994) COLORS OR SHERWIN WILLIAMS (SW) COLORS.



CFX Sections 1A & 1B Update

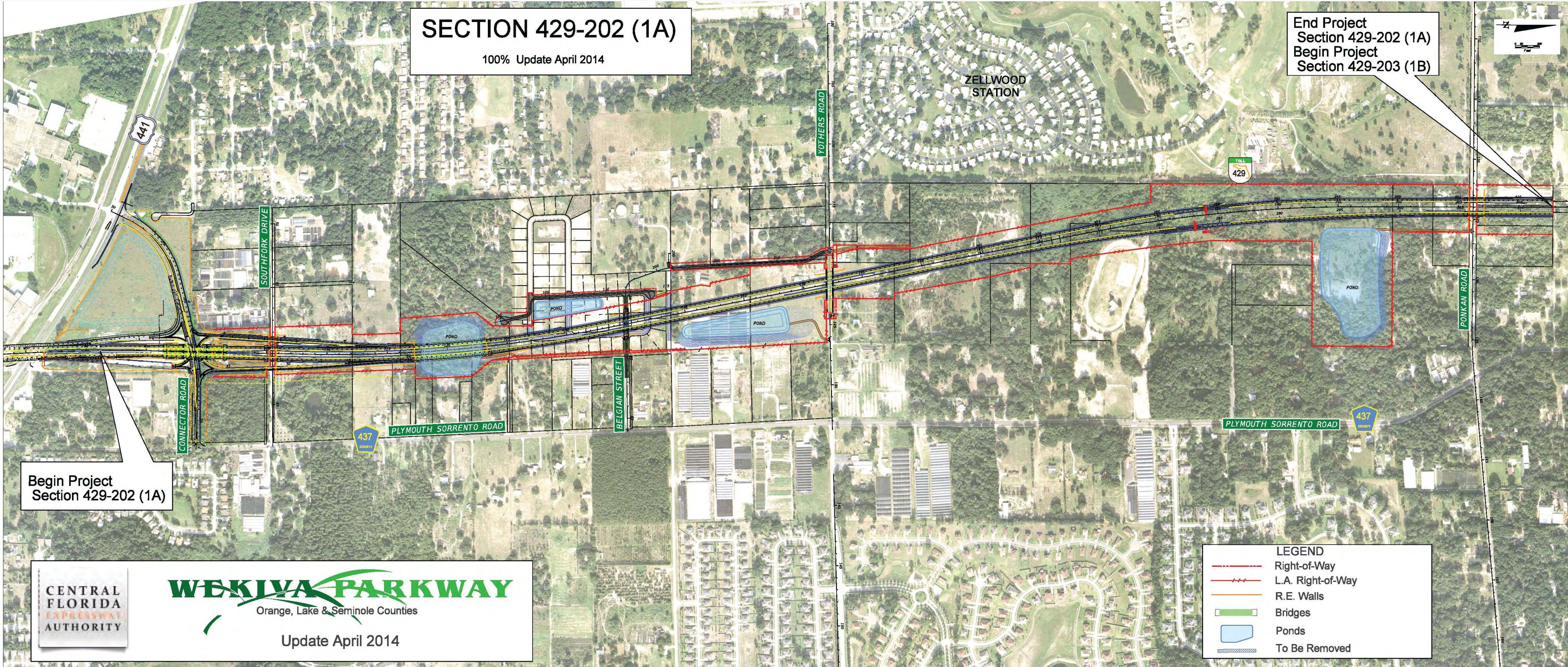
- ✓ Design Complete
- ✓ CEI Procurement Underway
- ✓ Ad for Contractor Bids – Spring 2015
- ✓ Construction Start: Summer 2015



Section 1A

SECTION 429-202 (1A)
100% Update April 2014

End Project
Section 429-202 (1A)
Begin Project
Section 429-203 (1B)



Begin Project
Section 429-202 (1A)

CENTRAL FLORIDA EXPRESSWAY AUTHORITY

WEKIVA PARKWAY
Orange, Lake & Seminole Counties

Update April 2014

LEGEND

- Right-of-Way
- - - - L.A. Right-of-Way
- R.E. Walls
- █ Bridges
- █ Ponds
- To Be Removed

Section 1B

SECTION 429-203 (1B)

90% Update October 2013 Subject to Change

Begin Project
Section 429-203 (1B)
End Project
Section 429-202 (1A)

End Project
Section 429-203 (1B)
Begin Project
Section 429-204 (2B)





CENTRAL
FLORIDA
EXPRESSWAY
AUTHORITY

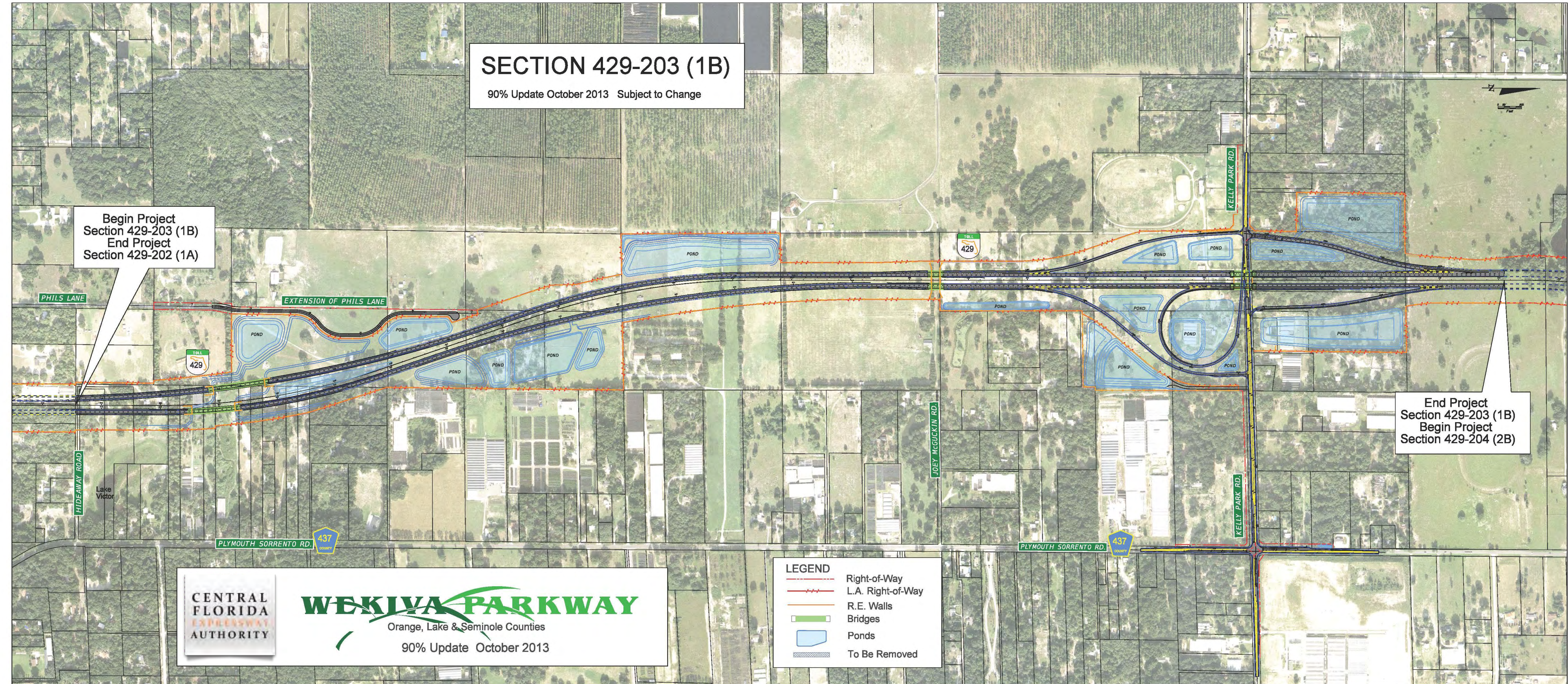
WEKIVA PARKWAY

Orange, Lake & Seminole Counties

90% Update October 2013

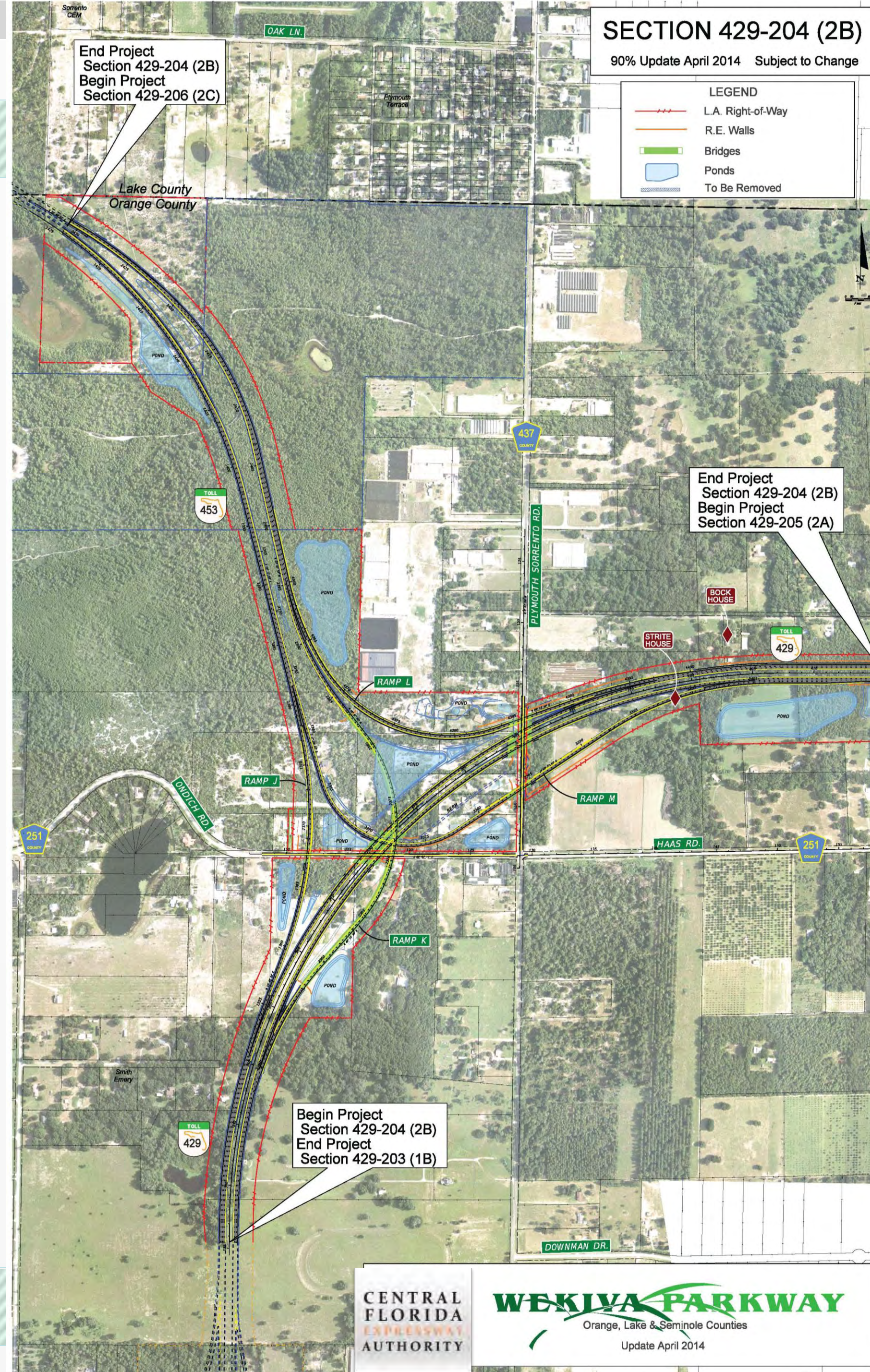
LEGEND

-  Right-of-Way
-  L.A. Right-of-Way
-  R.E. Walls
-  Bridges
-  Ponds
-  To Be Removed



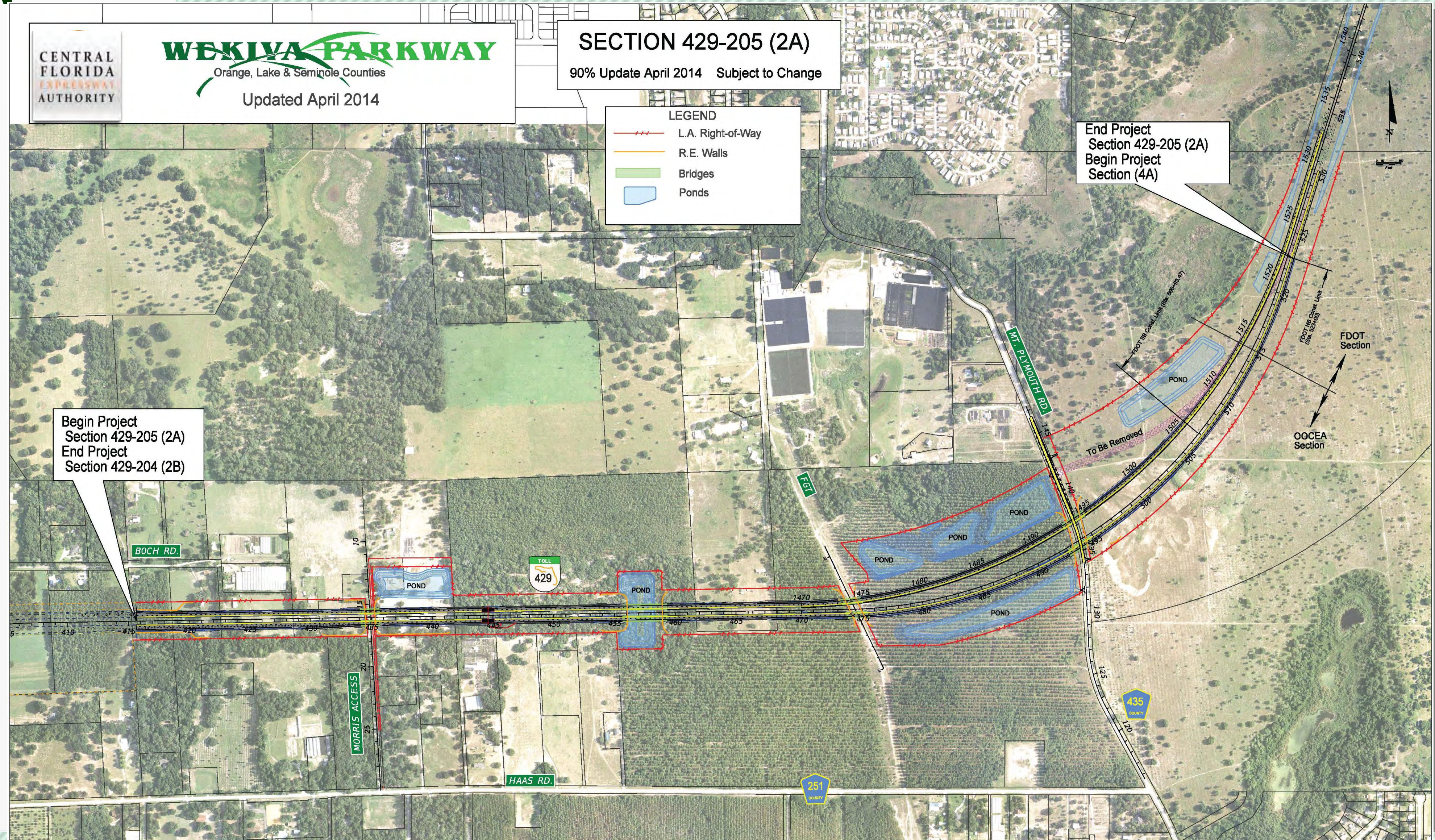
Section 2B

- March-April –
100% Design Complete
- 2017 – Construction
Start



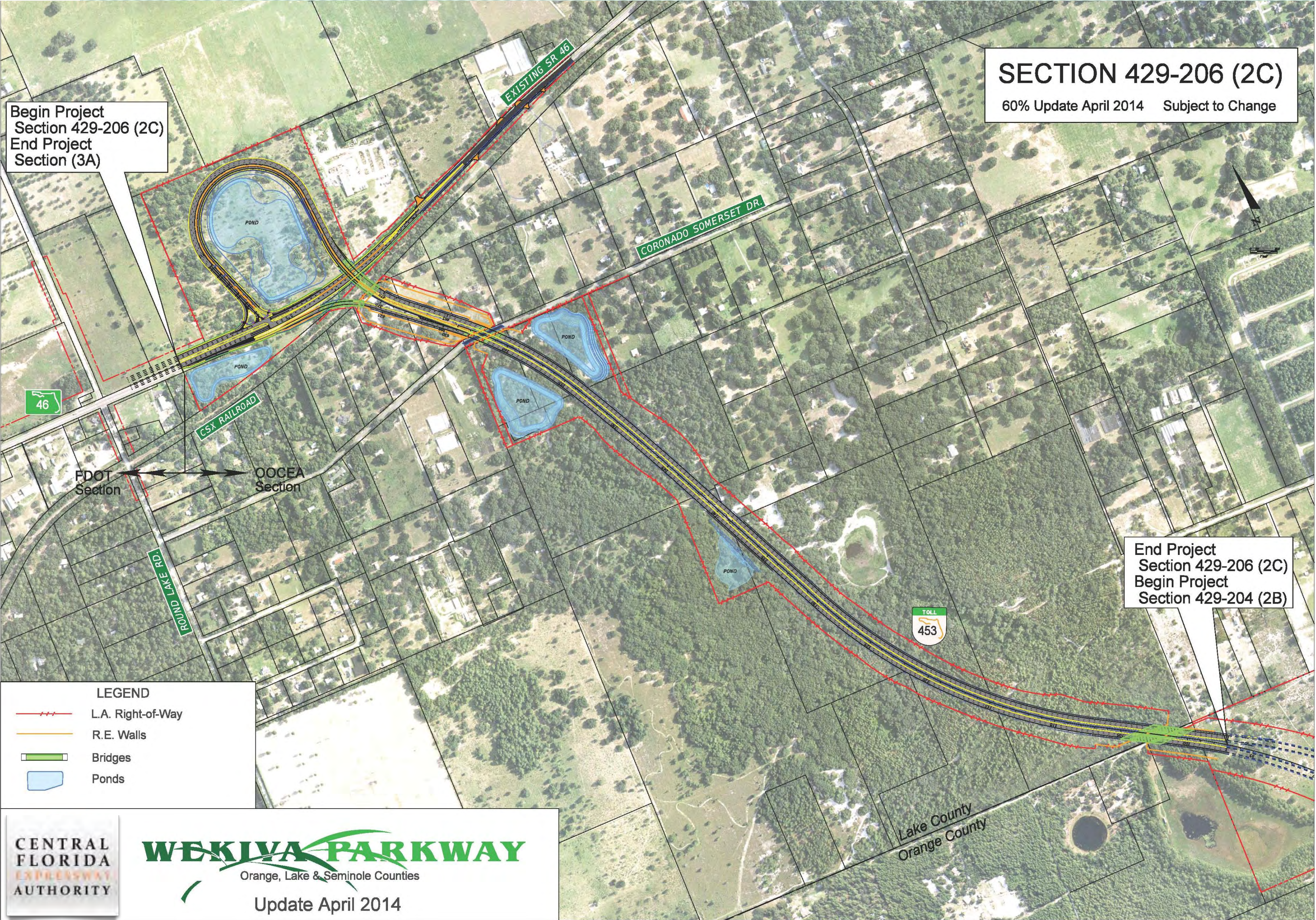
Section 2A

- June: Design 100% Complete
- 2017: Start Construction



Section 2C

- Jan. 2015 – 100% Design Complete
- 2017 – Start Construction



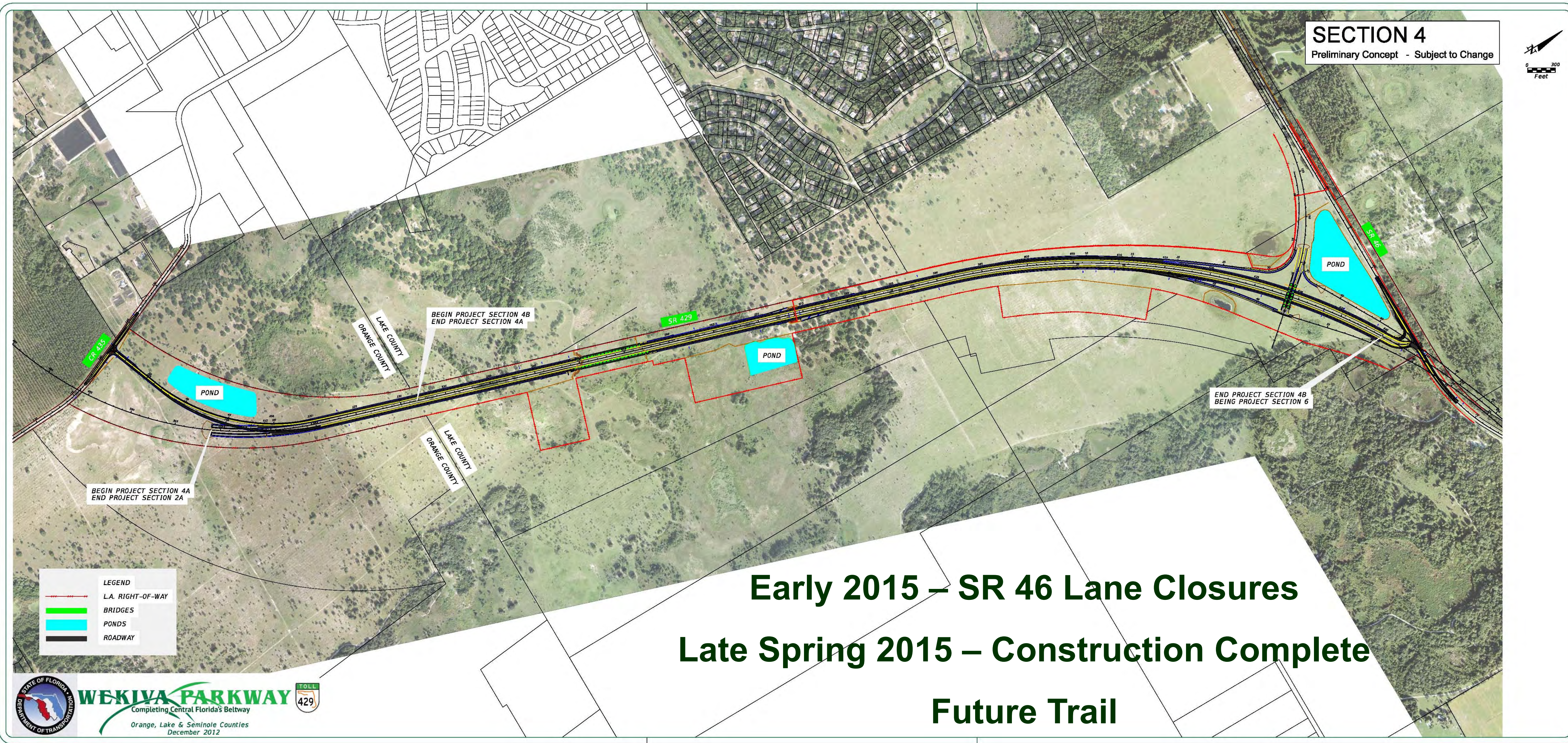
FDOT Sections



Section 3B



Section 4A & 4B

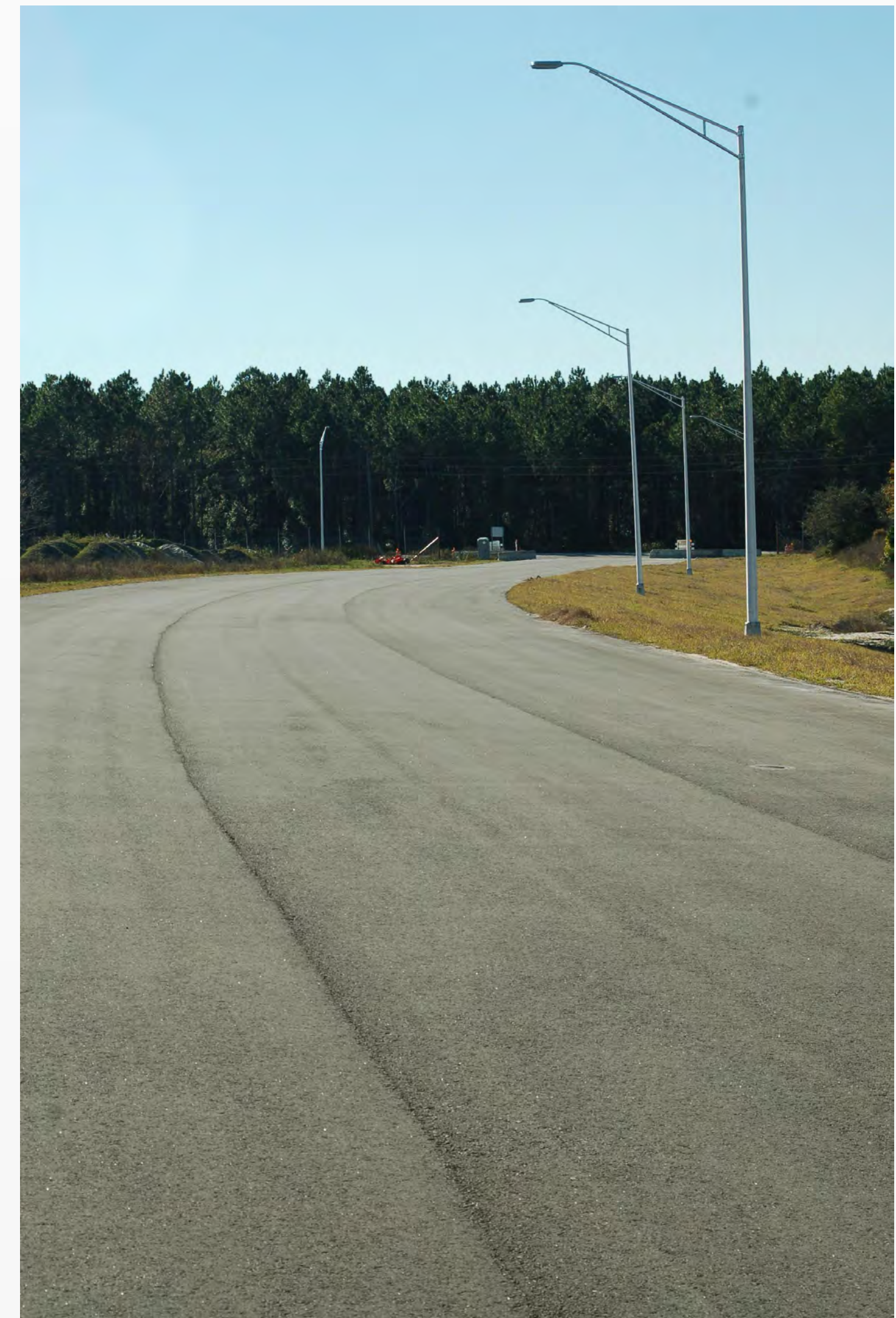


Early 2015 – SR 46 Lane Closures
Late Spring 2015 – Construction Complete
Future Trail

Sections 4A & 4B



Pavement, street lights and wildlife fencing on Section 4A near CR 435 (Mt Plymouth Road)



Sections 4A & 4B



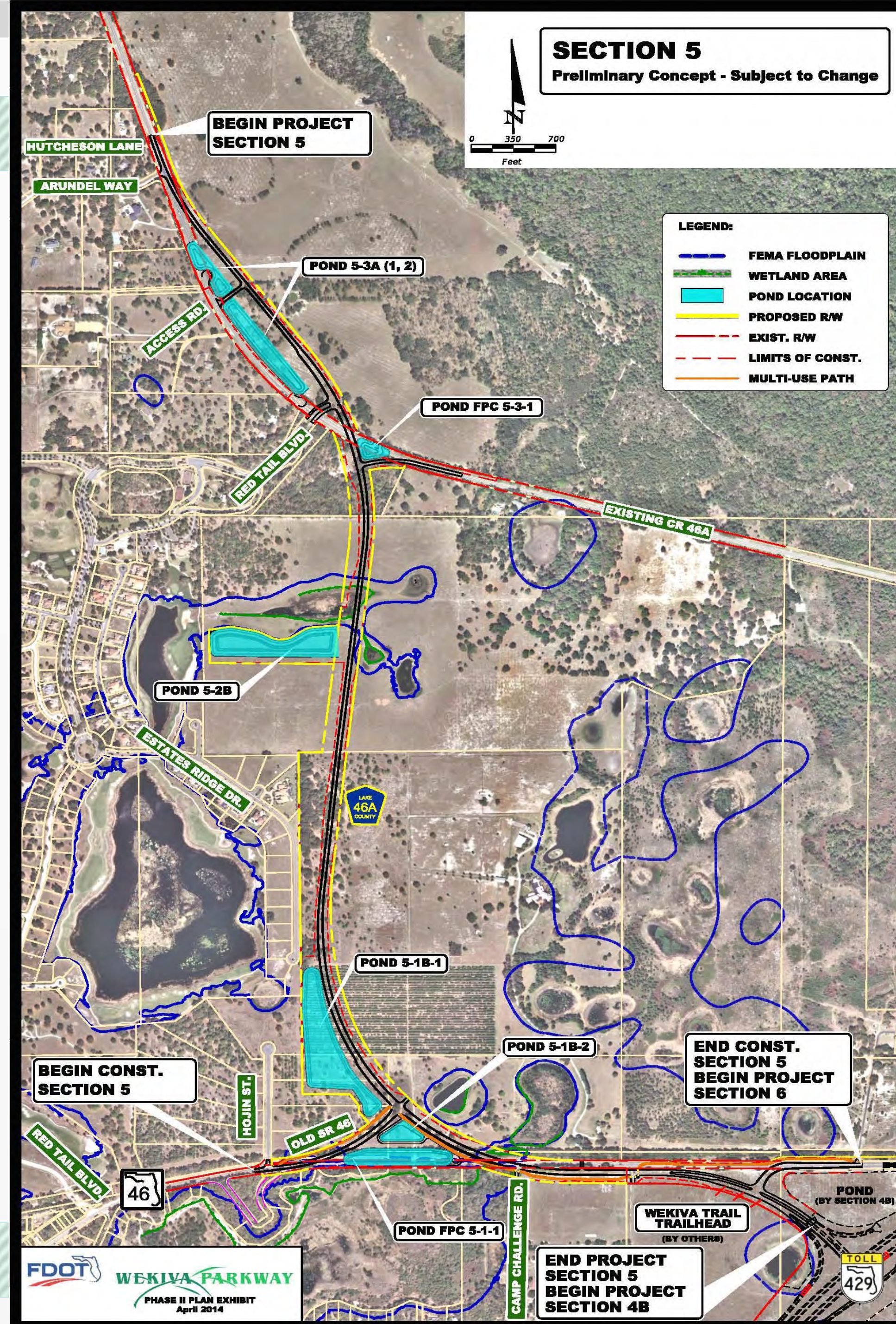
Sections 4A & 4B



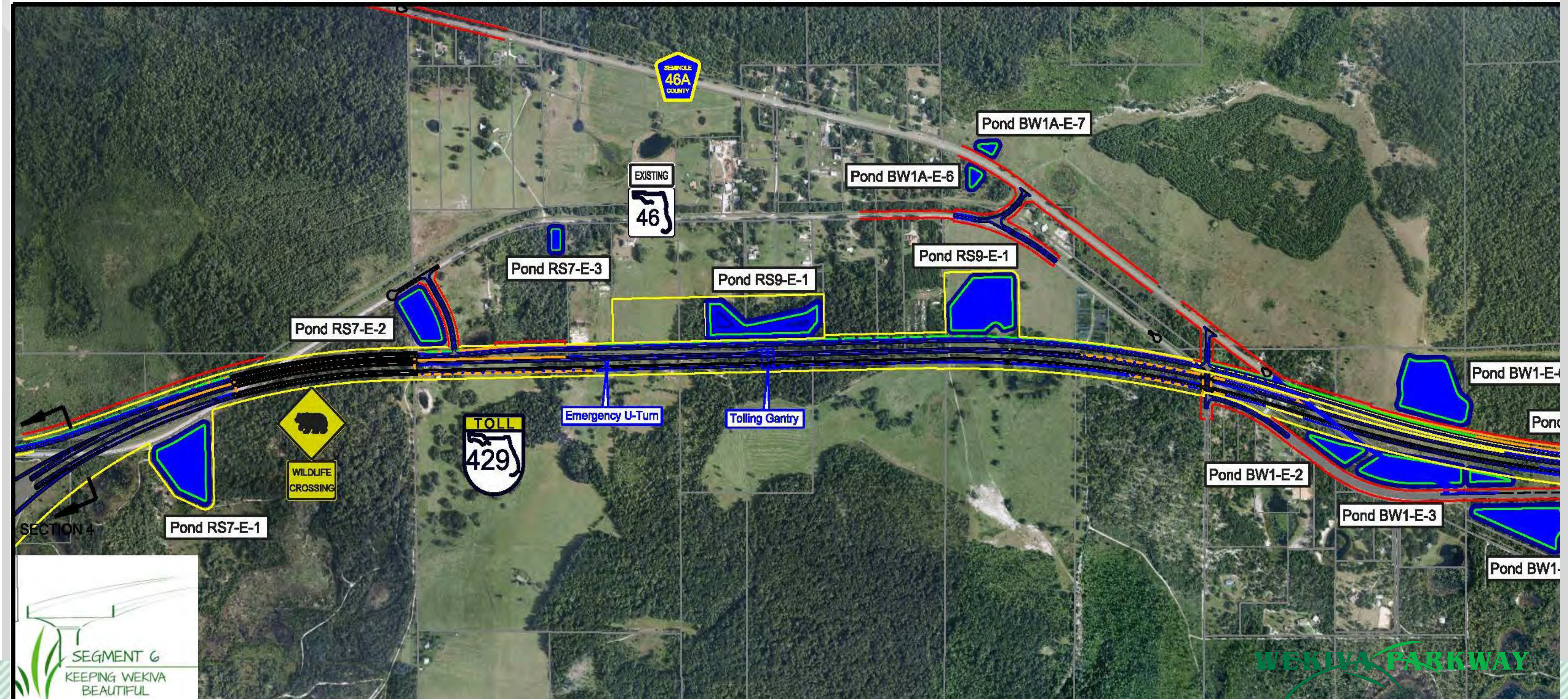
Section 5

Dec. 2014 - 90% Design Complete

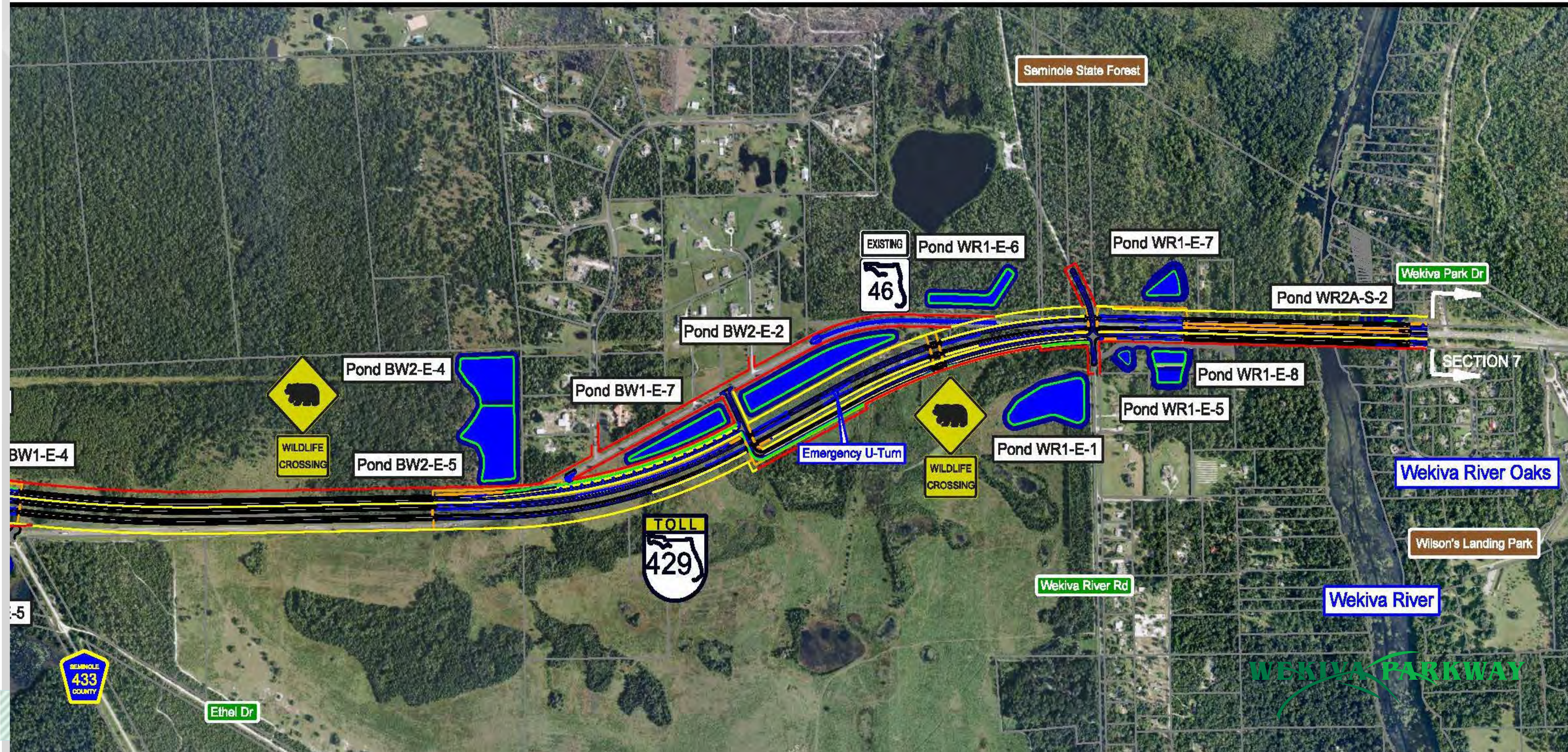
2017 – Construction Start



Section 6 - West



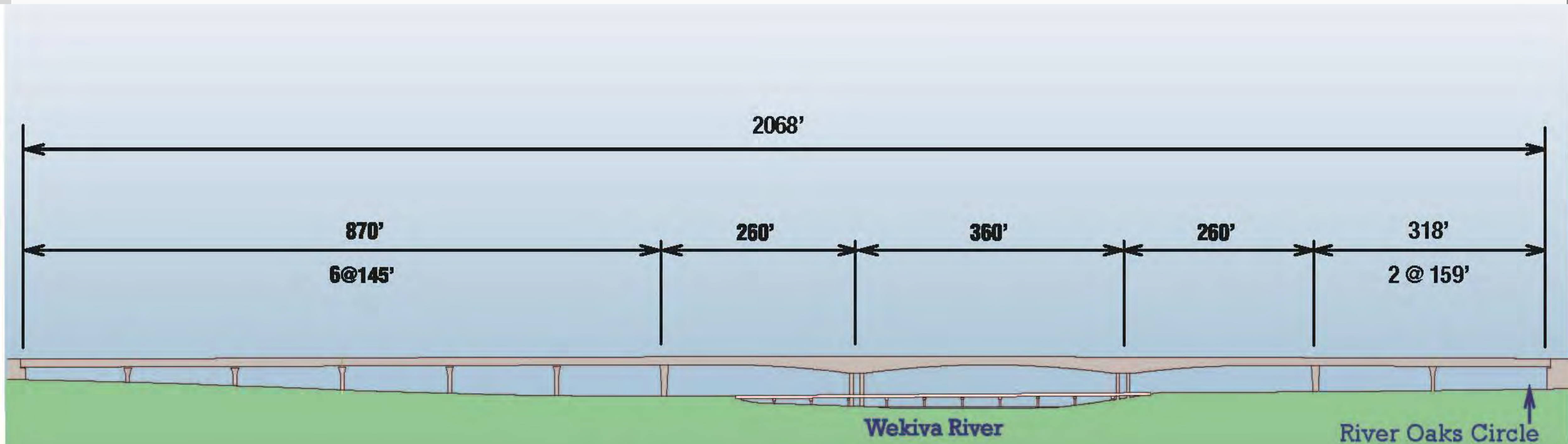
Section 6 - East



Wekiva River Bridge - Profile



Wekiva River Bridge - Layout



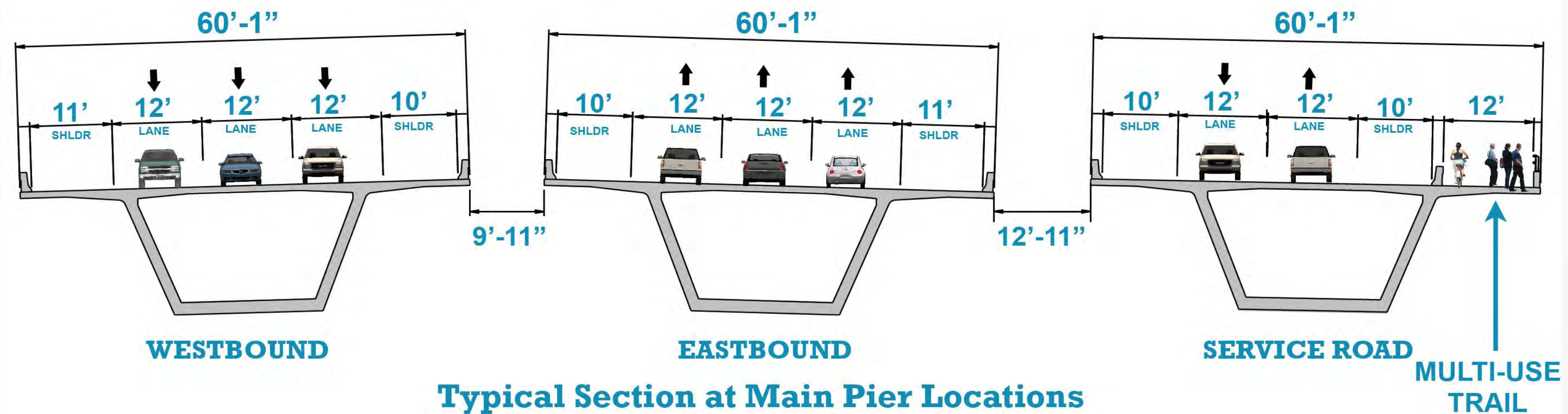
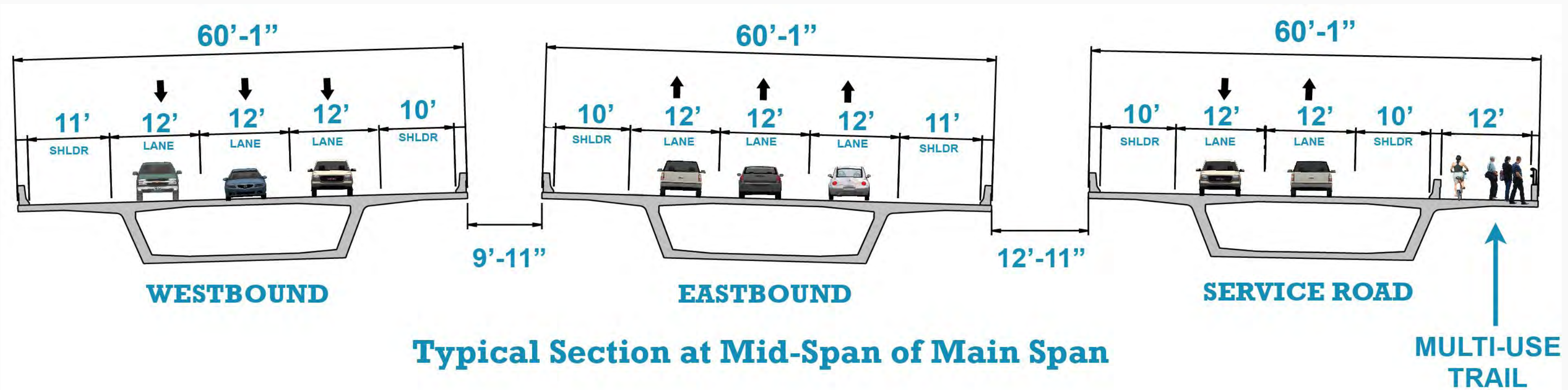
Proposed Bridge Layout

New span configuration with additional bridge spans on east end

Wekiva River Bridges – River User's View



Wekiva River Bridge - Cross Sections



***Showing ultimate configuration.
Parkway bridges will have 2 lanes in each direction
for initial configuration.***

Section 7A - West



BEGIN PROJECT SECTION 7A WEKIVA PARKWAY (SR 429)

Section 7A - East

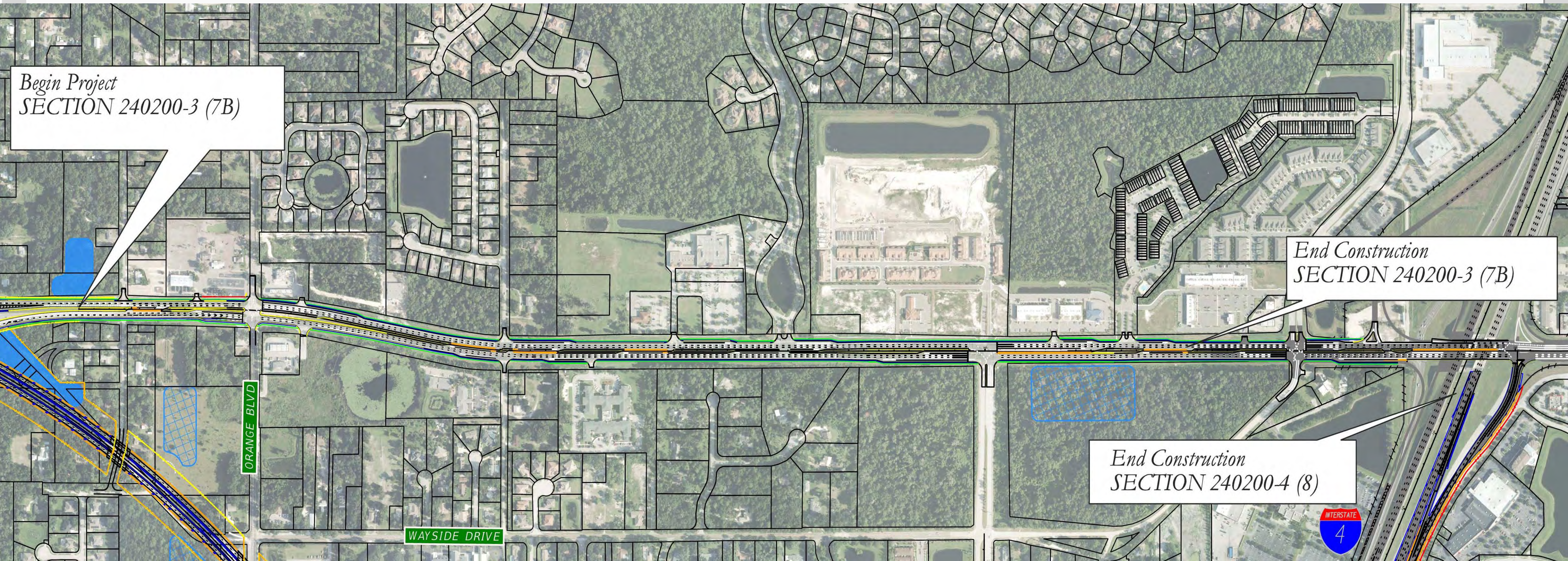


Section 7A – Roundabout Concept

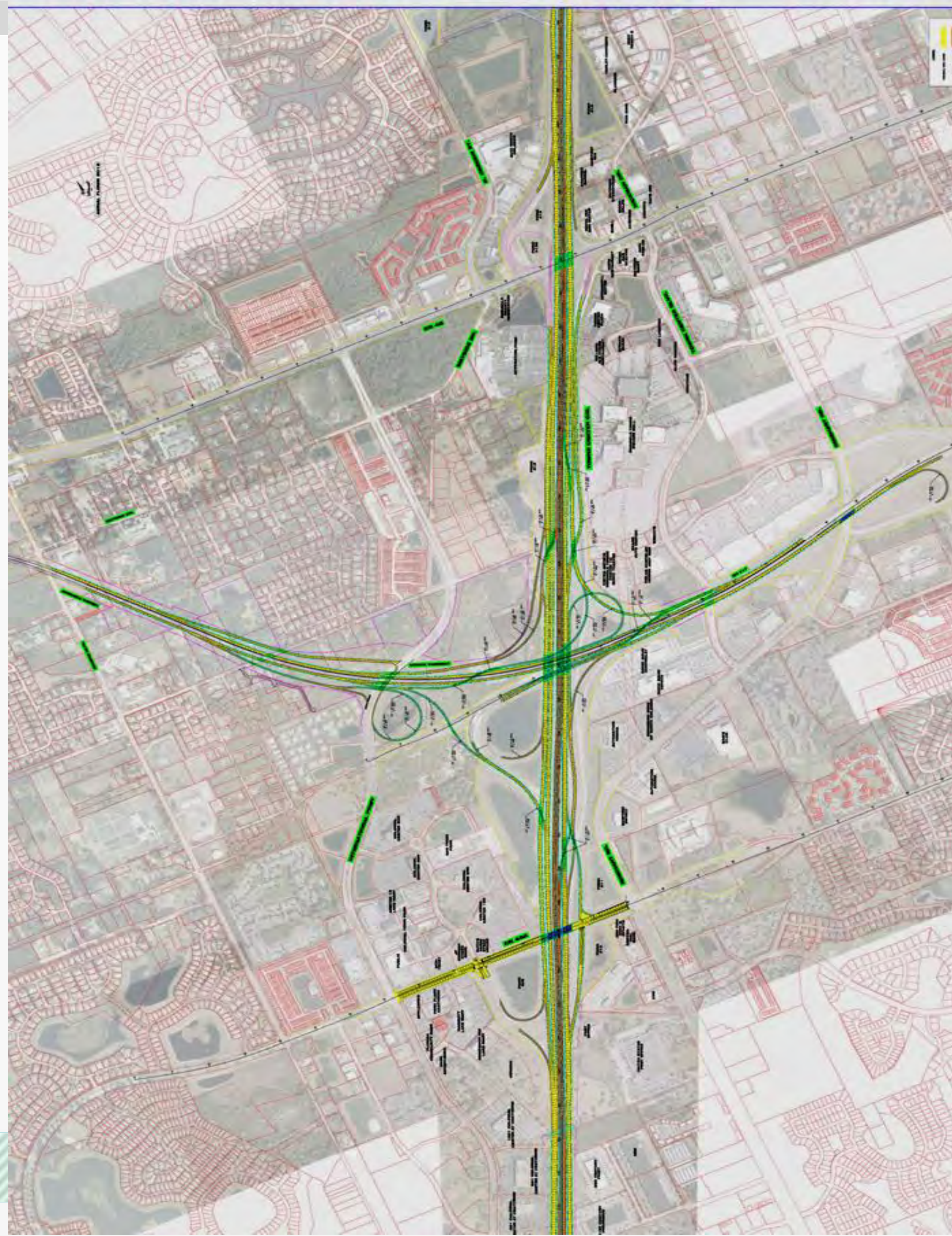


Lighting is planned at roundabout approaches & under bridges. No lighting on the parkway mainline.

Section 7B



Section 8



WEKIVA PARKWAY

Completing Central Florida's Beltway



2020

2019-20

2020-21

2021

2019

2019

2015

2017

2019

FDOT/TPK SECTIONS
* Indicates Design Build

CFX SECTIONS



Lake Apopka

Lake Monroe

Lake Mary

Longwood

Altamonte Springs

Casselberry

Apopka

Zellwood

NORTHWEST RECREATION COMPLEX

WEKIWA SPRINGS STATE PARK

ROCK SPRINGS RUN STATE RESERVE

LAKE COUNTY LINE
ORANGE COUNTY LINE

WEKIWA RIVER MITIGATION BANK

SEMINOLE STATE FOREST

SEMINOLE WOODS

BLACK BEAR WILDERNESS AREA

LOWER WEKIWA RIVER PRESERVE STATE PARK

WOLF BRANCH SINK PRESERVE

NEIGHBORHOOD LAKES

Mt. Plymouth

2019

Mount Dora

Sanford

St. Johns River

Sorrento

Mt. Plymouth

ROUND LAKE RD
SADLER RD
PLYMOUTH-SORRENTO RD

ONDICH RD

251

429-206

2C

429-204

2B

429-203

1B

429-202

1A

429-205

2A

431163-5

4A*

238275-6

4B*

238275-7

6*

238275-8

5

46A

46A

240200-2

7A

240200-3

7B*

46

431

240200-4

8*

46

417

17

92

441

429

414

451

4

441

429

451

4

441

429

414

451

4

441

429

414

451

4

441

429

414

451

4

441

429

414

451

4

441

429

414

451

4

441

429

414

451

4

441

429

414

451

4

441

429

414

451

4

441

429

414

451

4

441

429

414

451

4

441

429

414

451

4

441

429

414

451

4

441

429

414

451

4

441

429

414

451

4

441

429

414

451

4

441

429

414

451

4

441

429

414

451

4

441

429

414

451

4

441

429

414

451

4

441

429

414

451

4

441

429

414

451

4

441

429

414

451

4

441

429

414

451

4

441

429

414

451

4

441

429

414

451

4

441

429

414

451

4

441

429

414

451

4

441

429

414

451

4

441

429

414

451

4

441

429

414

451

4

441

429

414

451

4

441

429

414

451

4

441

429

414

451

4

441

429

414

451

4

441

429

414

451

4

441

429

414

451

4

441

429

414

451

4

441

429

414

451

4

441

429

414

451

4

441

429

414

451

4

441

429

414

451

4

441

429

414

451

4

441

429

414

451

4

441

429

414

451

4

441

429

414

451

4

441

429

414

451

4

441

429

414

451

4

441

429

414

451

4

441

429

414

451

What's Next?

- **Public Meetings: Section 7A – Feb. 17, 2015**
Sections 5 & 6 – Spring 2015

Community Presentations

Updates via Website: www.wekivaparkway.com

- **First Section (4A & 4B) Open to Traffic – Late Spring 2015**
- **First CFX Sections Begin Construction – Summer 2015**



For More Information:

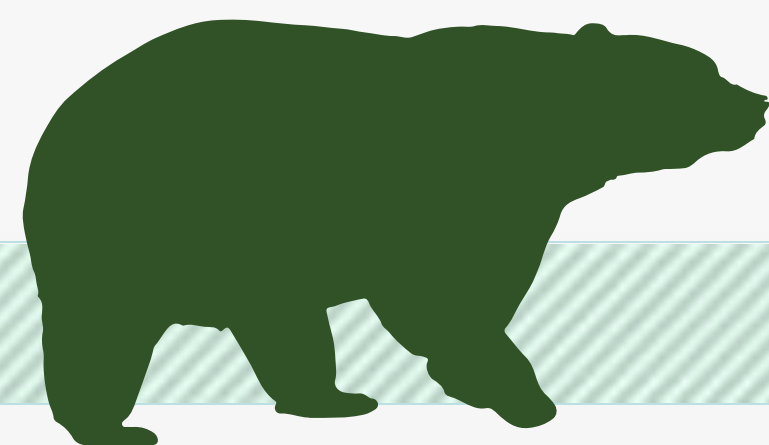
Mary Brooks

Public Information Officer

C: 407-694-5505

E: Info@wekivaparkway.com

W: www.wekivaparkway.com




WEKIVA PARKWAY
Completing Central Florida's Parkway

HOME | FDOT SECTIONS | OFX SECTIONS | SECTIONS BY COUNTY | PROJECT HISTORY | FAQ | CONTACT US

WELCOME
On behalf of the Florida Department of Transportation and the Central Florida Expressway Authority (CFE), formerly the Orlando-Orange County Expressway Authority, thank you for your interest in the Wekiva Parkway design and construction projects. The Wekiva Parkway (State Road 429) is a cooperative effort between these agencies and the Florida's Turnpike Enterprise.

The Wekiva Parkway (SR 429) would connect to SR 417, completing the beltway around northeast metropolitan Orlando. This estimated \$1.6 billion project includes \$200 million of non-toll road improvements including:

- Widening section 7 (7 miles) of SR 429 in Lake and Seminole Counties
- Rebuilding the US 441/SR 429 interchange in Mount Dora
- Shifting the SR 429 connection to SR 44 so wildlife can move more safely between habitats.

[Click here to view the overall Project Schedule.](#) Please understand schedules are subject to change due to a host of variables.

WEKIVA PARKWAY PROJECT SECTION MAP
Click on a Section Number for Project Details.



[Click here to view larger map.](#)

The 30-mile tolled expressway will provide travel alternatives and relieve US 441, SR 429 and other area roads of traffic congestion resulting from growth and travel between Orange, Lake and Seminole Counties.

Authorized in 2002 by the Wekiva Parkway and Protection Act (Chapter 268, Part II, F.S.), this expressway has been heralded as a shining example for transportation planning through an environmentally sensitive area. Development of the Wekiva Parkway has included setting aside more than 2,000 acres of land for conservation. The parkway also will include numerous wildlife bridges, and will be largely elevated to reduce accidents between vehicles and wildlife.

HELPFUL LINKS
Central Florida Expressway Authority
Florida Department of Transportation
Roads 211
SunRail
I-4 Project
FDOT Central Florida Project
Florida's Turnpike Enterprise

FOLLOW US
Facebook
Twitter

Copyright 2012. All rights reserved. Home | FDOT Sections | OFX Sections | Sections by County | Project History | FAQ | Contact Us
Public participation is advised. Vehicles required to wear, color, national origin, age, sex, religion, disability or family status.

LATEST NEWS
Click on link for details.
June 2014
More Than 100 Attend FDOT Section 9 Public Meeting Open House
June 2014
Wekiva Parkway POAG Study Wins 2014 Engineering Excellence Award
June 2014
Seminole County Commissioners Receive Update on Wekiva Parkway
May 2014
Check Out the Latest Section 41 & 42 Construction Photos
April 2014
More Than 200 Attend FDOT Public Meeting on Sections 2 & 6

PUBLIC MEETING - 100-Plus Attend FDOT Section 9 Meeting

PROJECT DOCUMENTS

PRESENTATIONS

PRESS RELEASES

CONTACT US
Mary Brooks
Public Information Officer
Info@wekivaparkway.com
407-694-5505



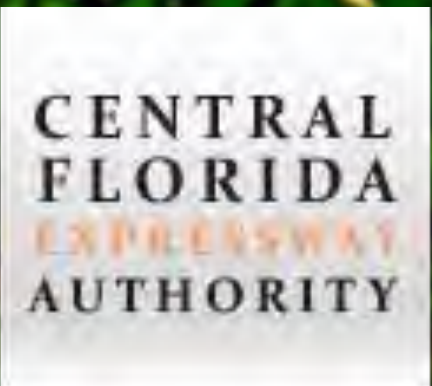
WEKIWA PARKWAY

Completing Central Florida's Beltway



Thank You!

Questions?



Section 3B

