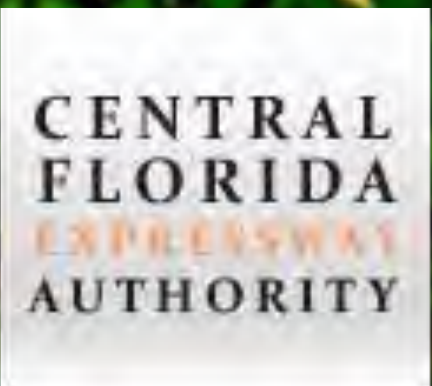


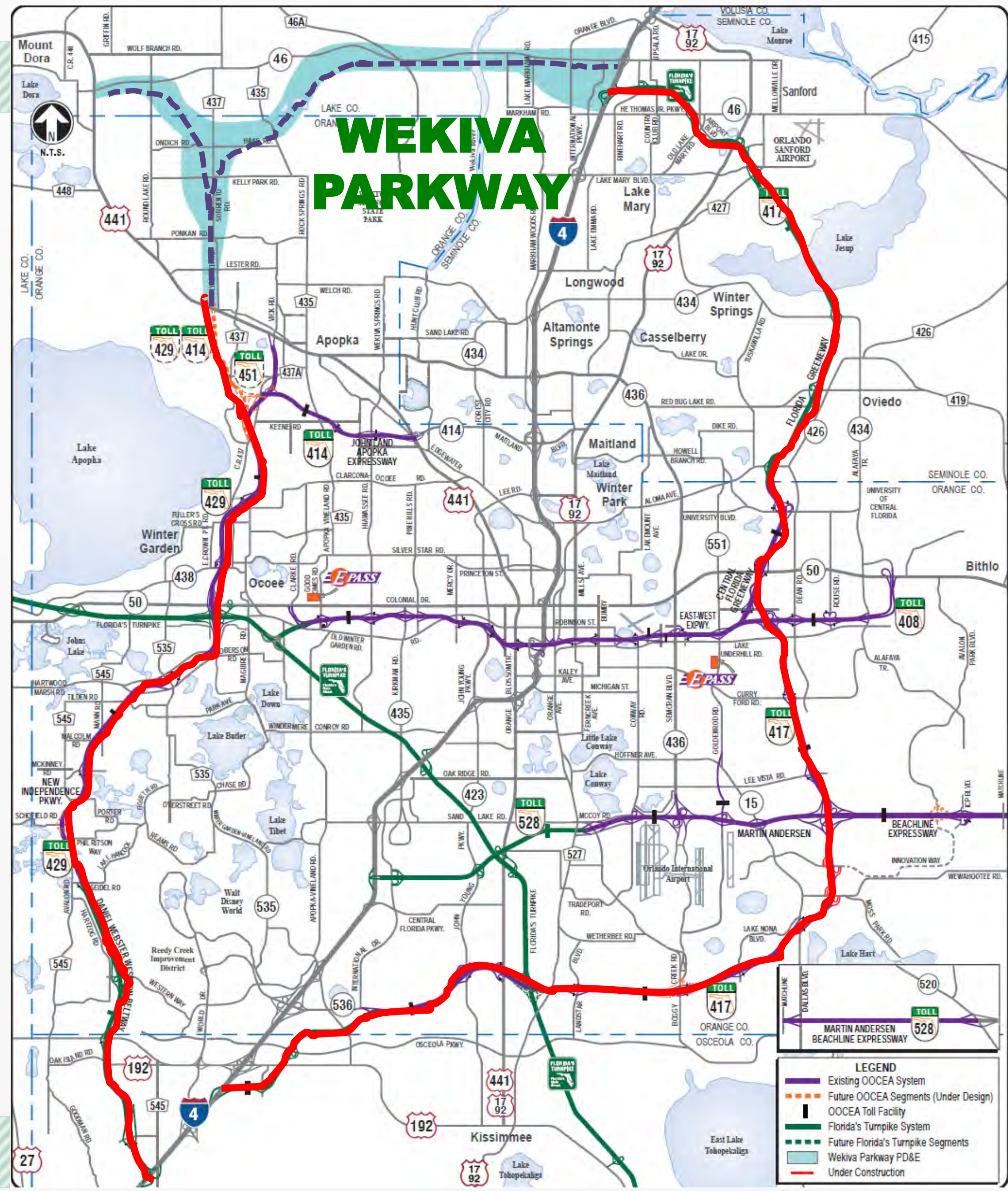


A Regional Transportation Solution

Walden Cove
July 29, 2015



WEKIVA PARKWAY

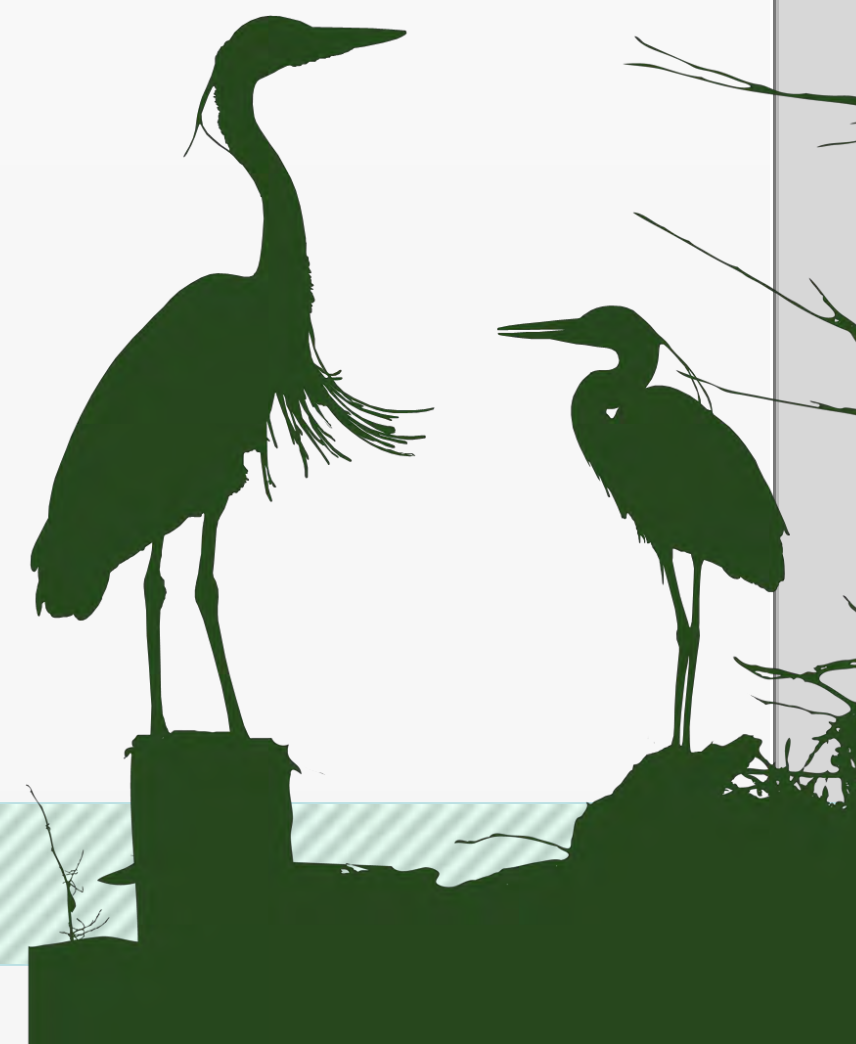


WEKIVA PARKWAY

Project Description

- **\$1.6 Billion Completion of Central Florida's Beltway**
- **25-mile Toll Road**
- **Non-Toll Road Improvements:**
 - **Improving SR 46 in Lake & Seminole Counties**
 - **Rebuilding the US 441/SR 46 Interchange in Mount Dora**
 - **Relocating CR 46A to Improve Wildlife Connectivity**
 - **Parallel Service Roads in East Lake & Seminole Counties**
- **10-mile Multi-use Trail (Parts of East Lake & Seminole Counties)**

WEKIIVA PARKWAY



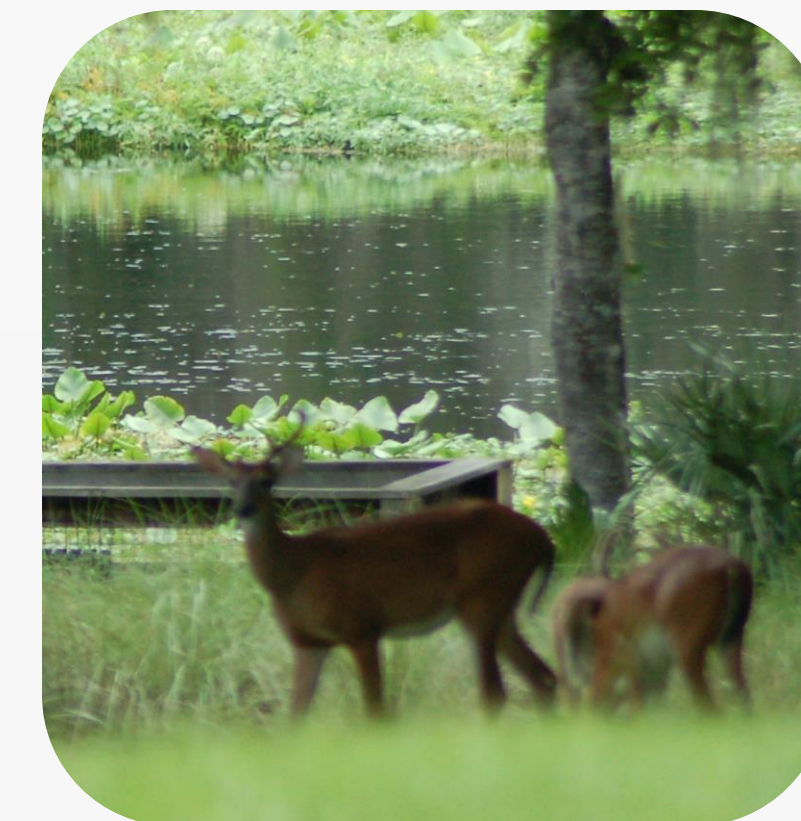
All Electronic Tolling (AET)

- First in Central Florida
- No Toll Plazas – No Cash
- Enhances Safety
- Maximizes Convenience
- AET Info on Website
- Reduces Noise & Pollution
- Improves Mobility
- Saves Money



Protecting Nature

- **Wekiva River: Outstanding Florida Water & National Wild & Scenic River**
- **Authorized by the 2004 Wekiva Parkway & Protection Act**
 - **Purchased 3,400 Acres for Conservation**
 - **Largely Elevated to Reduce Accidents Between Vehicles & Wildlife**
 - **Several Wildlife Bridges**
 - **Few Interchanges (Reduce Development)**
 - **Wildlife Jump-outs & Bat Abodes**



Wekiva Parkway Trail

10 Miles

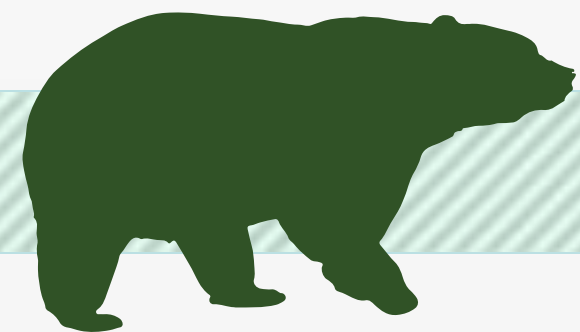
Construction:

- ✓ **Sections 5, 6 & 7A**
- ✓ **2017-2021**

- ✓ **Sections 4A & 4B**
- ✓ **2017-2018**

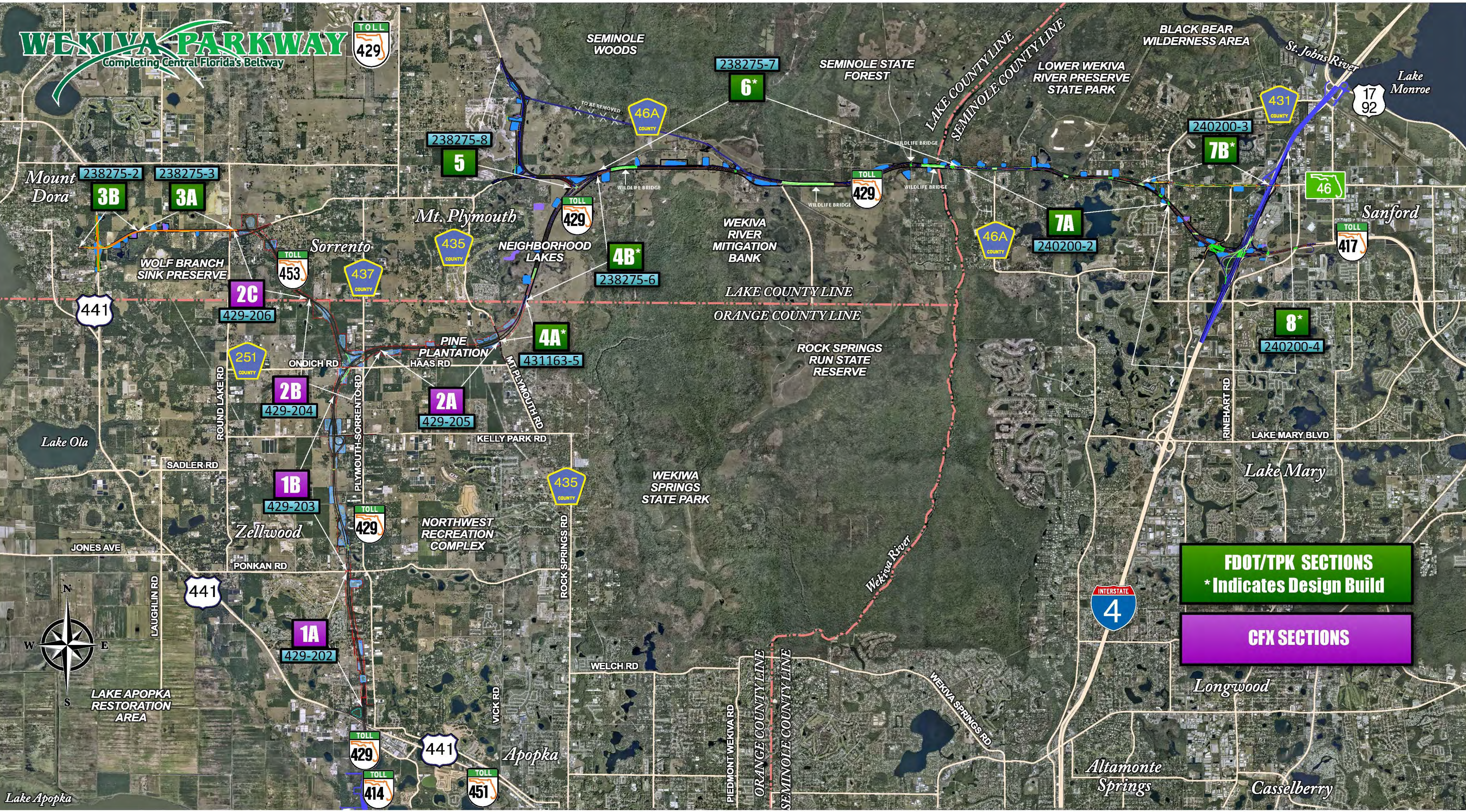
Connections:

- ✓ **West Orange Trail Extension**
- ✓ **Lake-Wekiva Trail (Planned)**
- ✓ **Seminole-Wekiva Trail Extension**



WEKIVA PARKWAY

Completing Central Florida's Beltway



FDOT/TPK SECTIONS
* Indicates Design Build

CFX SECTIONS

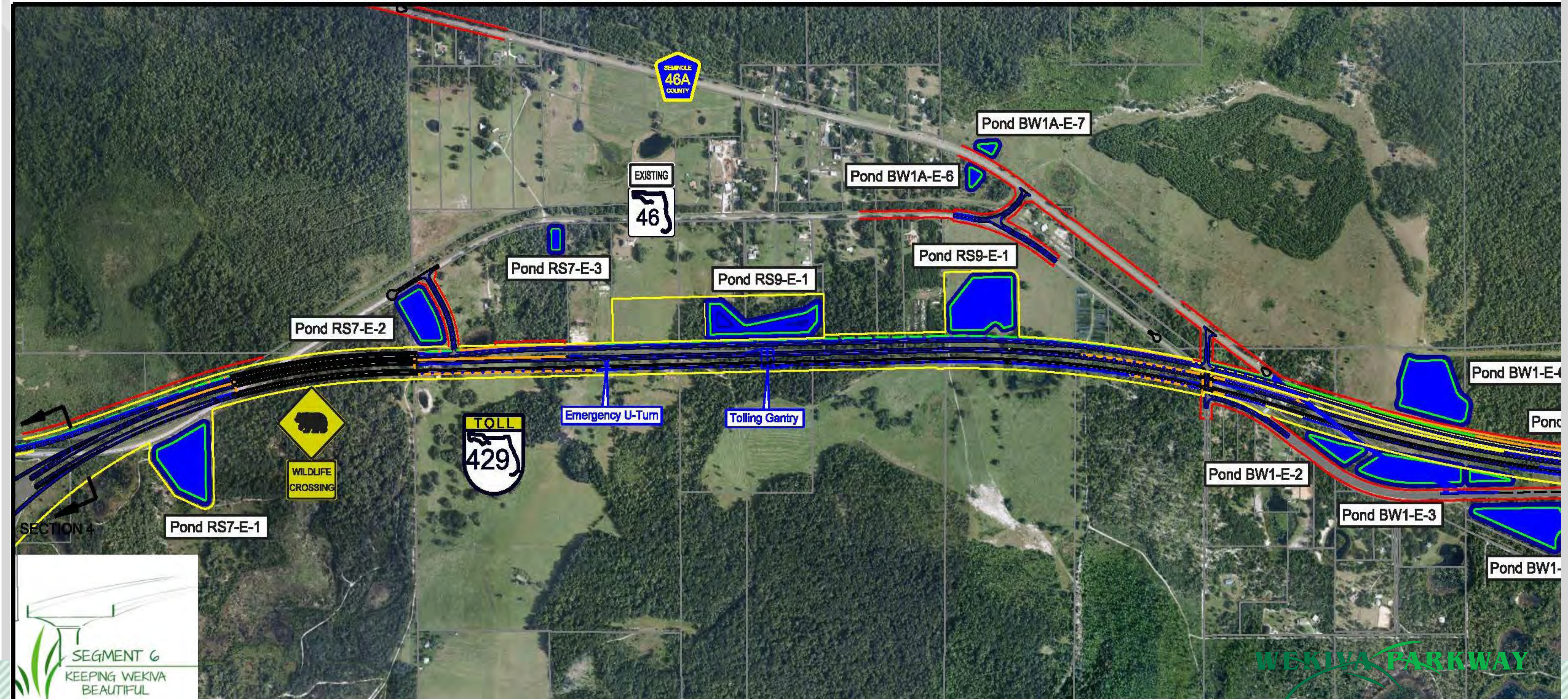


Lake Apopka

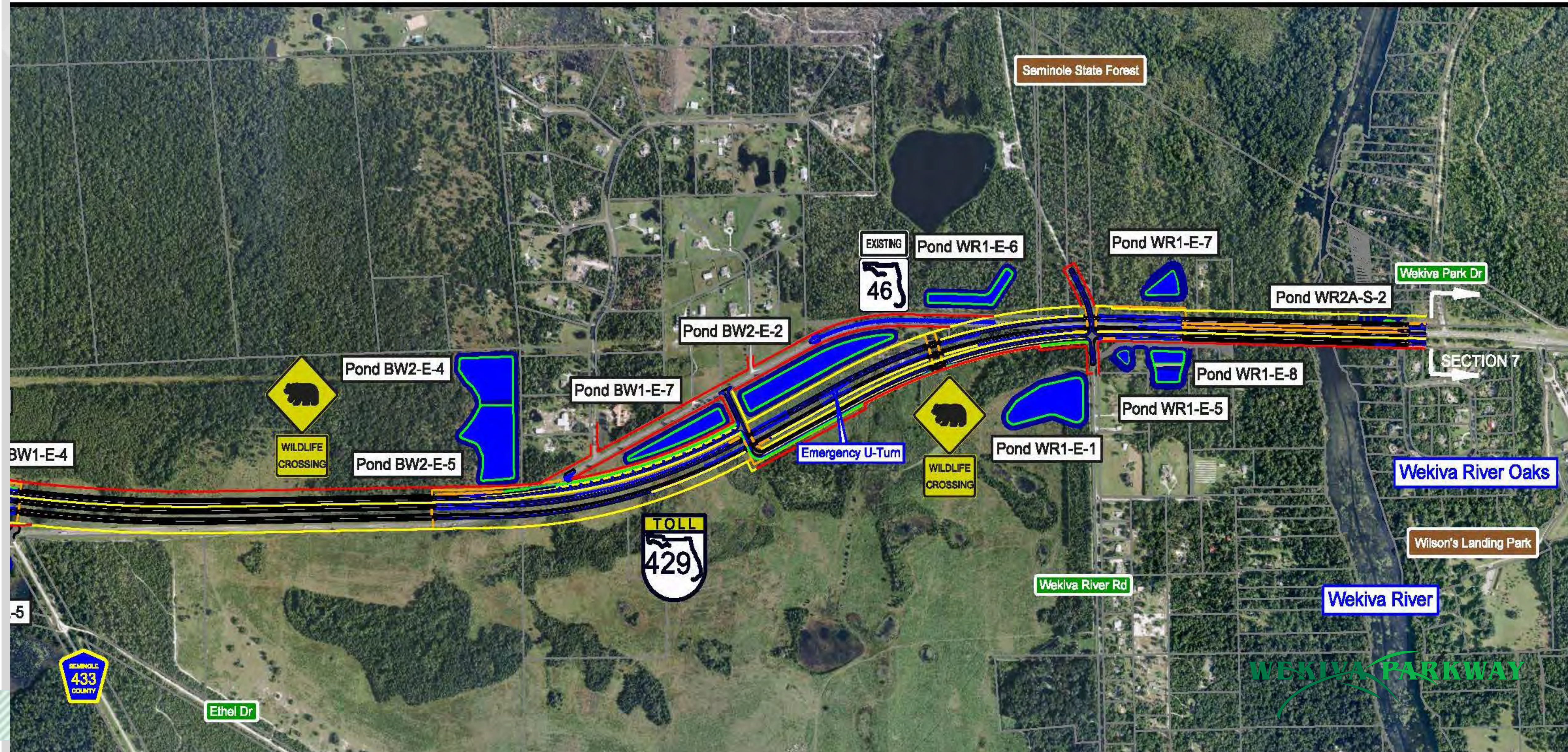
FDOT Sections Seminole County



Section 6 - West



Section 6 - East



Wekiva River Bridge - Profile



Wekiva River Bridges – River User's View



Section 7A Description

Design: 90 Percent Plans

Design Complete: Late 2015-early 2016

Construction: Late 2017-Early 2018

Limits: Wekiva Park Drive to Orange Boulevard (Seminole Co.)

Features: Roundabouts, Non-tolled, Parallel Service Roads,
Trail



Section 7A - West

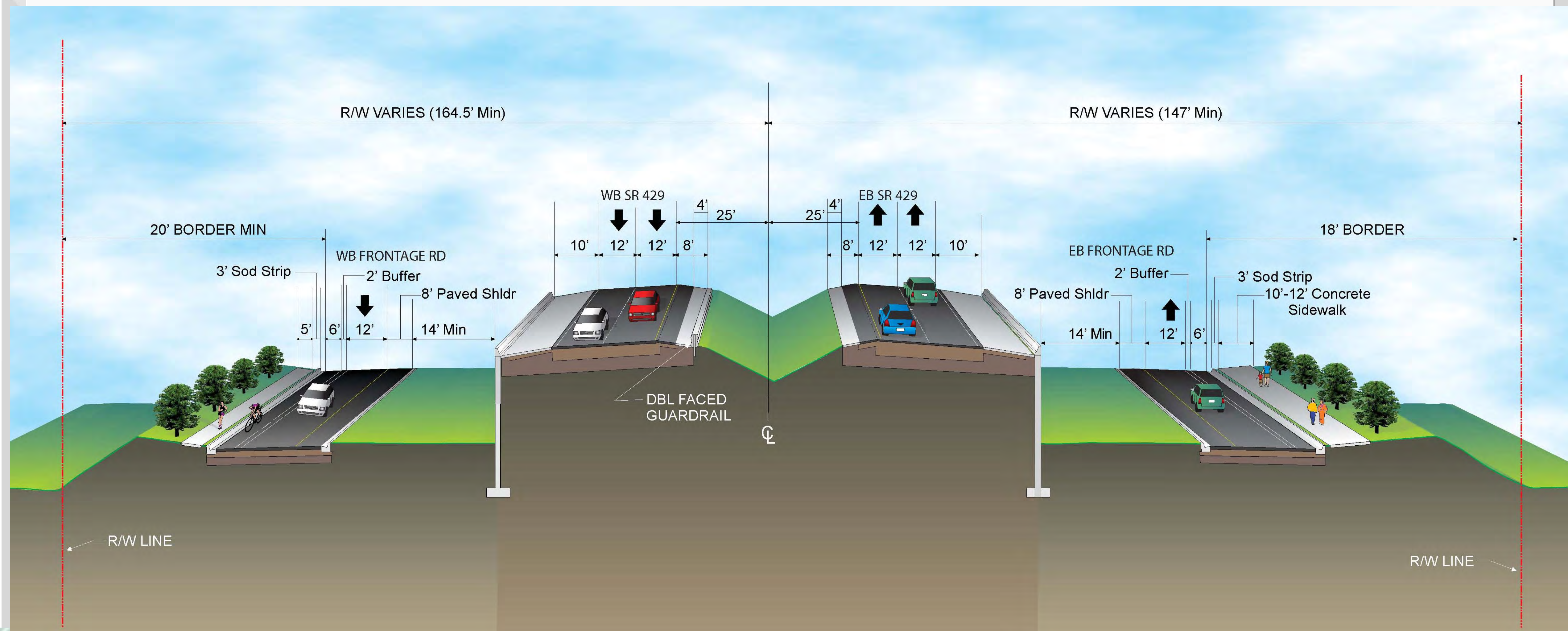


**BEGIN PROJECT SECTION 7A
WEKIVA PARKWAY (SR 429)**

Section 7A - East



Section 7A – Typical Section



Section 7A – Roundabout Concept



Lighting is planned at roundabout approaches & under bridges. No lighting on the parkway mainline.

Walden Community

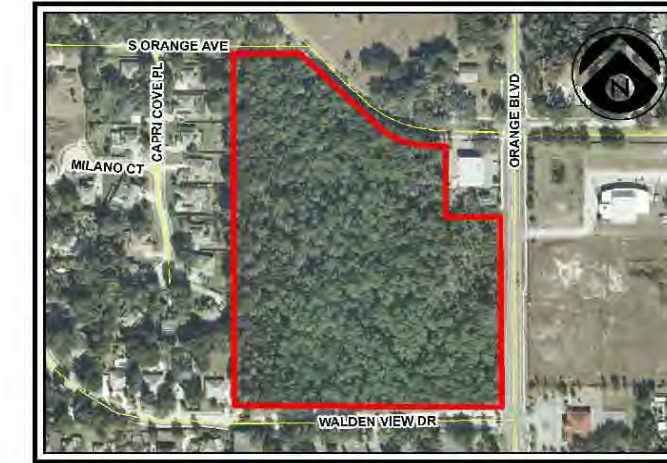
FINAL ENGINEERING PLANS FOR WALDEN ENCLAVE SEMINOLE COUNTY, FLORIDA



VICINITY MAP
SCALE: 1" = 500'

SHEET INDEX:

C1.0	COVER SHEET
C2.0	GENERAL NOTES
C2.1	EROSION CONTROL / DEMOLITION PLAN
C2.2	EROSION CONTROL / M.O.T. DETAILS
C3.0	GEOMETRY SITE PLAN
C4.0	UTILITY NOTES
C4.1	UTILITY PLAN
C5.0	PAVING, GRADING AND DRAINAGE PLAN
C6.0	PLAN AND PROFILES
C7.0	DETAILS SHEET
C8.0	UTILITY DETAILS
C8.1	UTILITY DETAILS



SITE DATA:

SCPA - PARCEL ID #s:	25-19-29-300-0120-0000 25-19-29-300-0340-0000
PROPERTY LOCATION:	WALDEN VIEW DRIVE SANFORD, FL 32771
TOTAL PROPERTY AREA:	18.21 Ac.
PD BOUNDARY AREA:	18.11 Ac.
FDOT TAKING AREA:	2.13 Ac.
REMAINING DEVELOPABLE PROPERTY AREA:	15.98 Ac.
FEMA FLOOD INSURANCE RATE MAP FLOOD ZONE:	X
FIRM PANEL #12117C0065F DATED SEPT. 28, 2007	
FUTURE LAND USE (FLU):	PD
ADJACENT FUTURE LAND USE:	
NORTH	COM/LDR
SOUTH	SE
EAST	LDR
WEST	LDR/PD
ZONING:	PUD/A-1
ADJACENT ZONING:	
NORTH	C-1/A-1
SOUTH	A-1
EAST	A-1
WEST	R-1A/AAA/PUD
ZONING REQUIREMENTS:	
MINIMUM MEAN LOT AREA	11,050 sf
MINIMUM MEAN LOT WIDTH	85 ft.
MINIMUM LOT DEPTH	130 ft.
MAXIMUM BUILDING HEIGHT	35 ft.
SETBACKS	
FRONT YARD	20 ft.
SIDE YARD	5 ft.
REAR YARD	20 ft.
CORNER SIDE YARD	15 ft.*

*CORNER LOT SIDE STREET SETBACK IS REDUCED TO 15 FT. FROM 25 FT. PROVIDED IT MEETS SITE VISIBILITY CRITERIA. (SCLDC - CH. 30-PART II-SECTION 30.186.)

THE PROPOSED PROJECT SHALL INCLUDE SINGLE FAMILY RESIDENTIAL HOMES RANGING IN SIZE FROM 2,500 SF TO 5,500 SF OF LIVING SPACE.

OPEN SPACE REQUIRED:	25% (4.56 Ac.)
OPEN SPACE PROVIDED:	29.2% (5.28 Ac.)
W. PROPERTY LINE	2.60 Ac. (14.4%)
N. & S. PROPERTY LINE	2.01 Ac. (11.1%)
E. PROPERTY LINE	0.67 Ac. (3.70%)

WATER SERVICE PROVIDED BY SEMINOLE COUNTY

RECLAIMED WATER SERVICE PROVIDED BY SEMINOLE COUNTY

SEWER SERVICE PROVIDED BY SEMINOLE COUNTY

SERVICE DEMANDS:		
WATER	(32 DU * 350 GPD/DU)	11,200 GPD
SEWER	(32 DU * 300 GPD/DU)	9,600 GPD
TRAFFIC	(32 DU * 10.74 TRIPS/DU)	344 TRIPS

FIRE PROTECTION WILL BE PROVIDED AND DESIGNED TO MEET SEMINOLE COUNTY AND NFPA REQUIREMENTS.

ALL UTILITY LINES SHALL BE DESIGNED TO MEET SEMINOLE COUNTY REQUIREMENTS

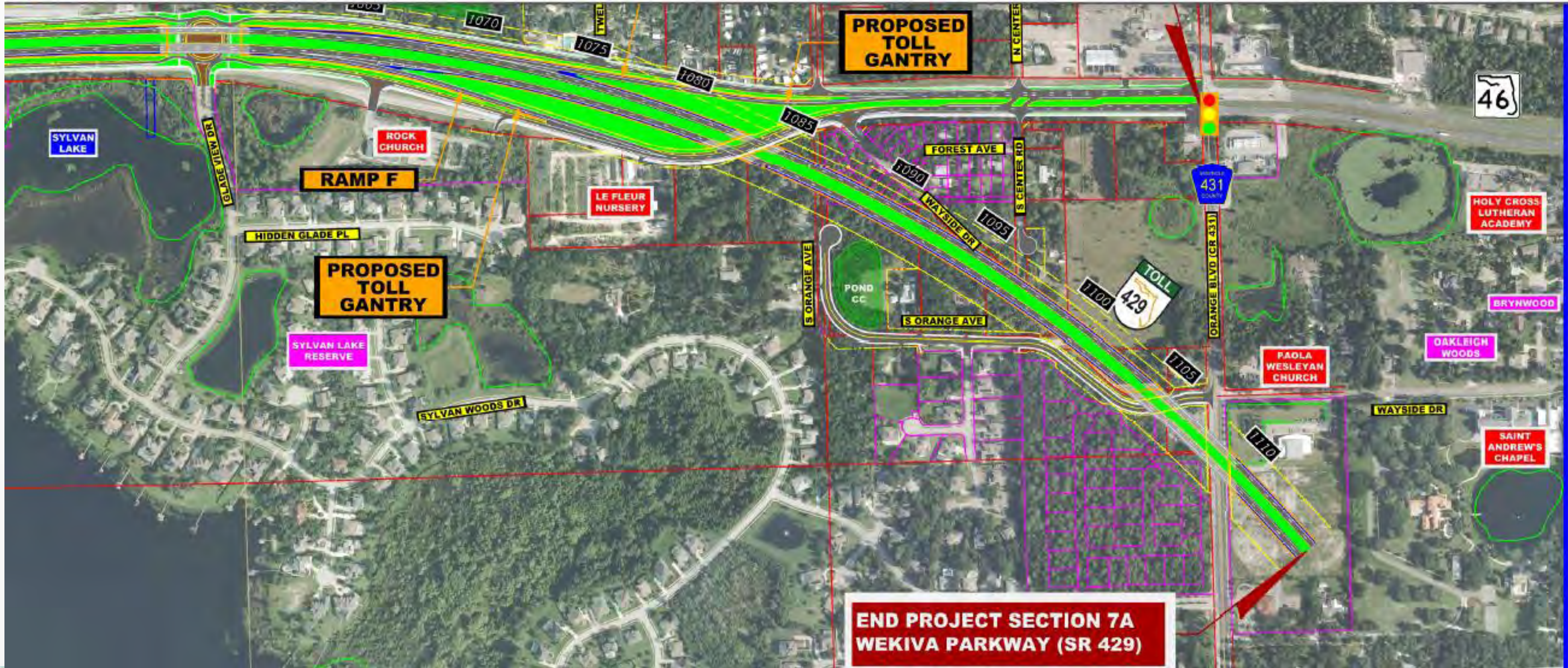
UTILITY EASEMENTS DEDICATED TO SEMINOLE COUNTY SHALL BE PROVIDED OVER ALL WATER AND SEWER MAINS LOCATED OUTSIDE THE PUBLIC RIGHT OF WAY.

THE PROJECT DOES NOT CONTAIN ON-SITE WETLANDS

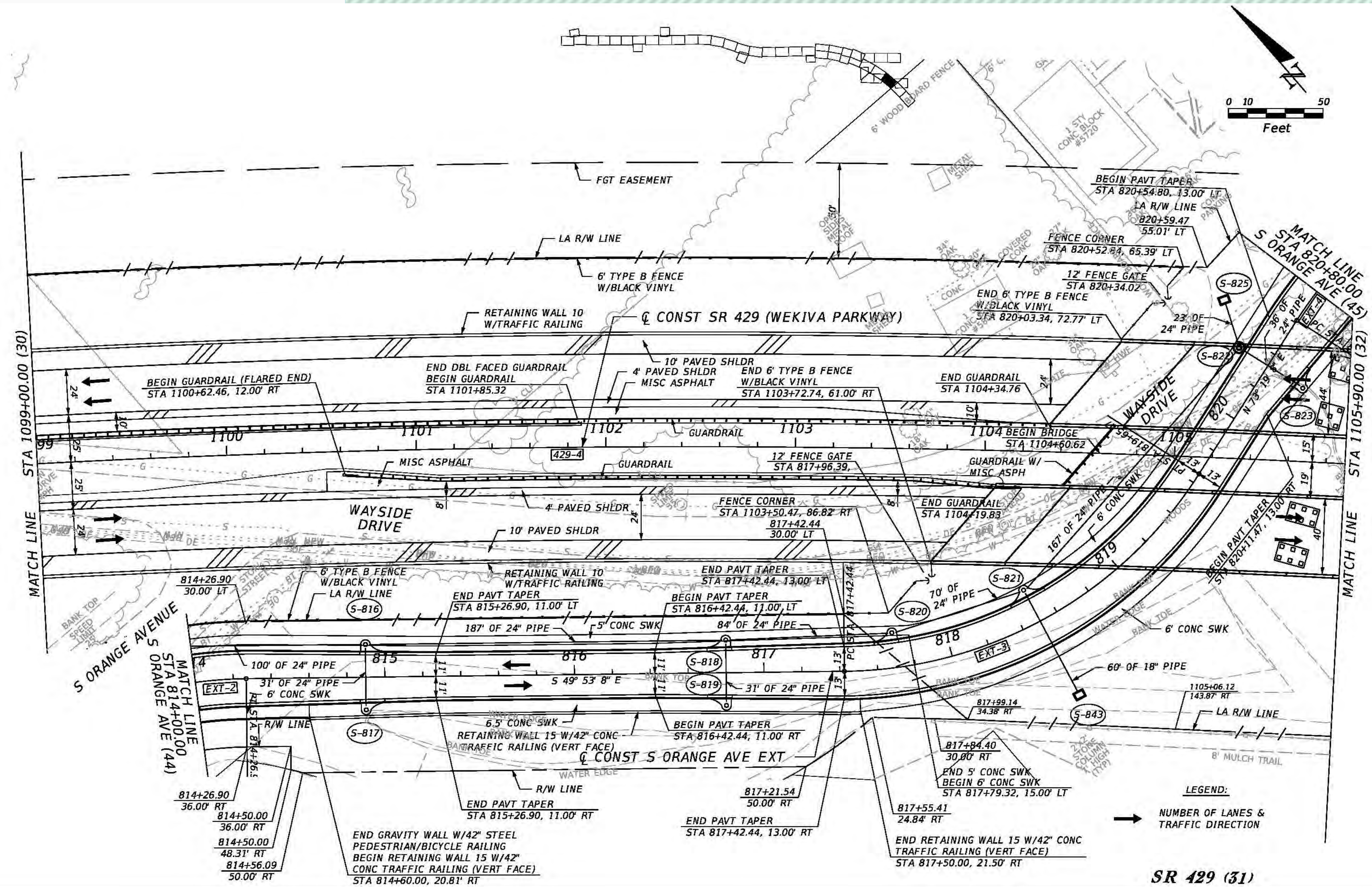
AN HOA SHALL BE CREATED TO PROVIDE FOR THE MANAGEMENT OF ALL COMMON AREA AND FACILITIES

PROJECT SIGNAGE SHALL COMPLY WITH SEMINOLE COUNTY LAND DEVELOPMENT CODE

Walden Cove

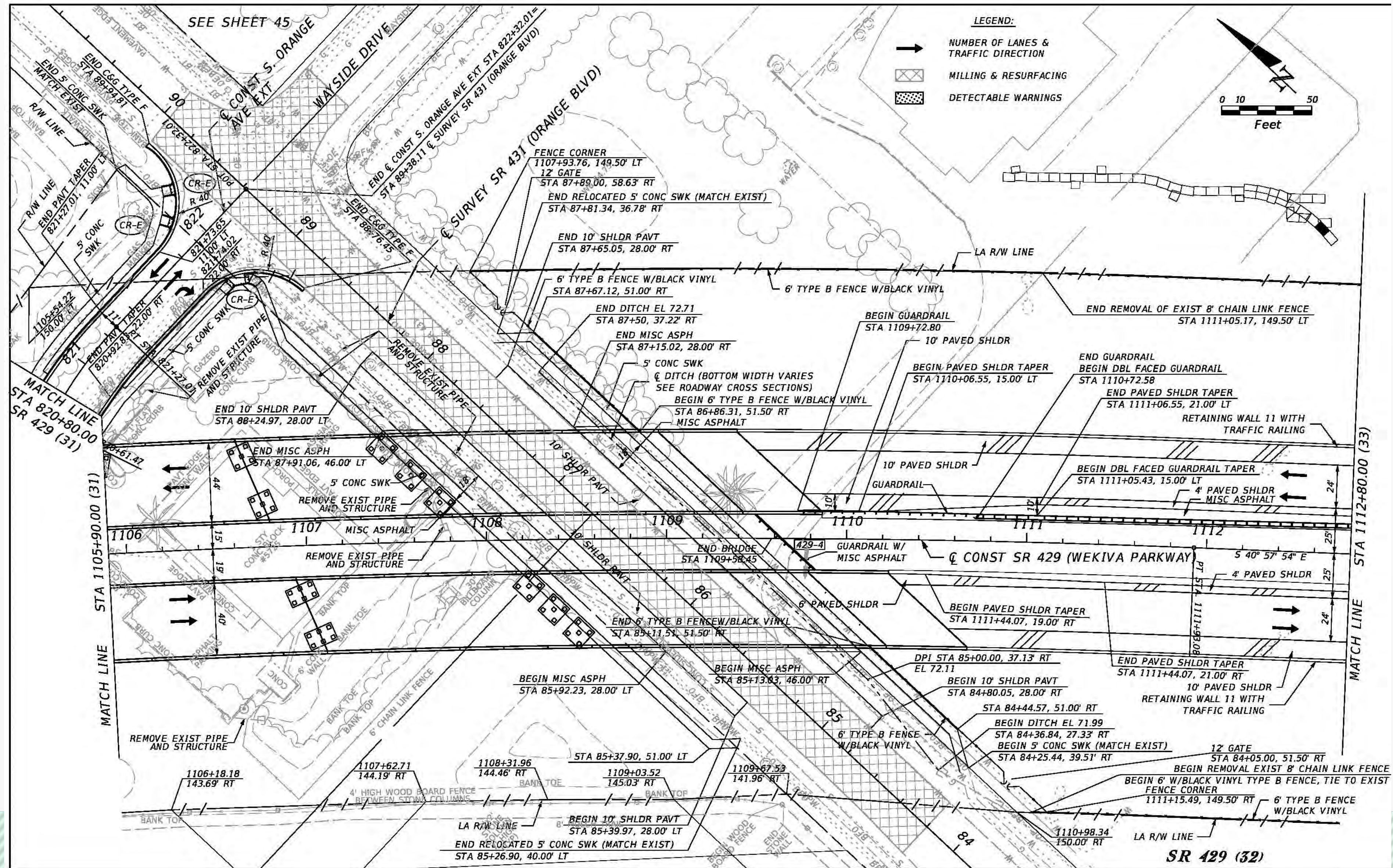


Walden Cove

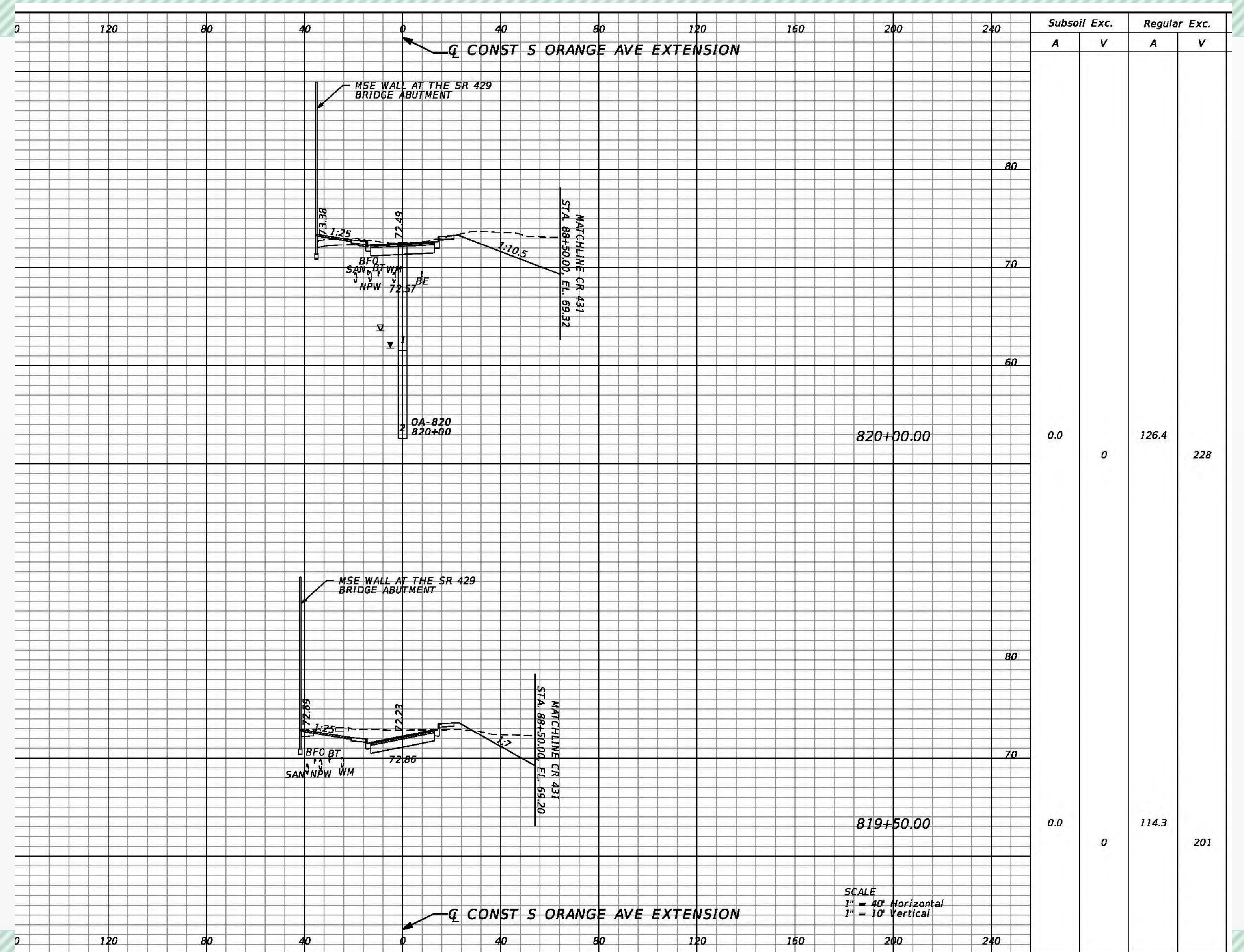


SR 429 (31)

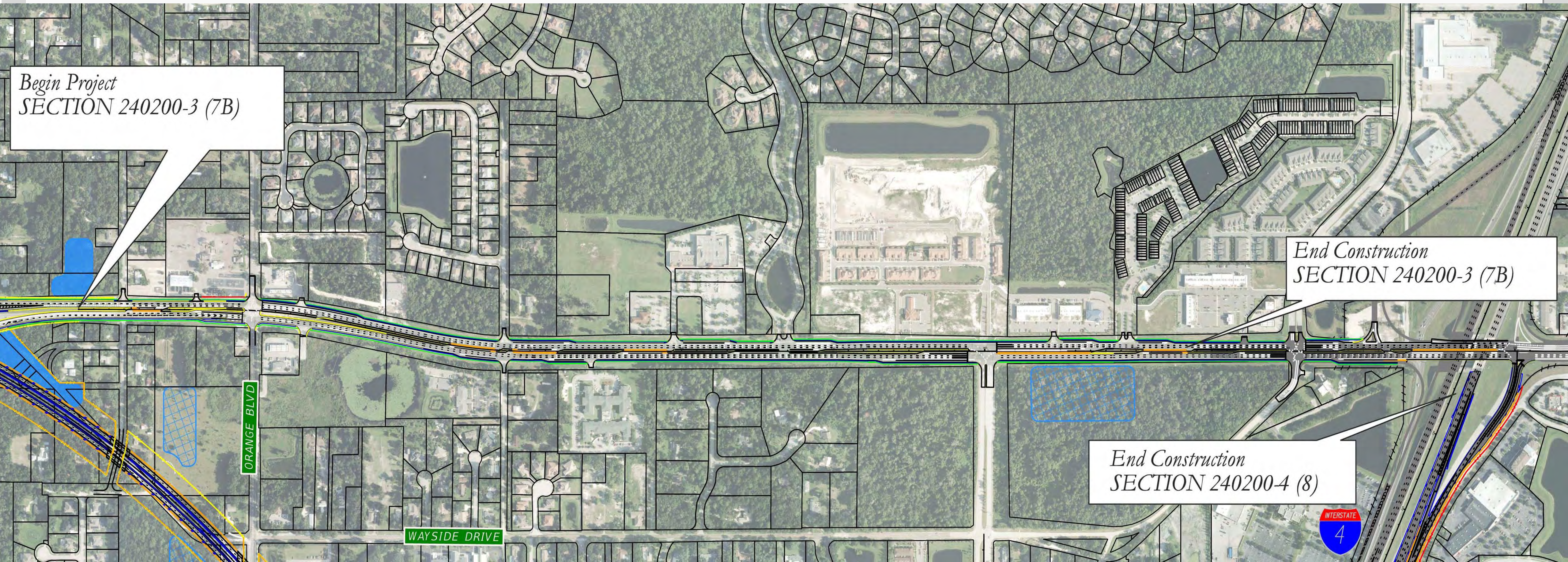
Walden Cove



Orange Avenue Cross Section



Section 7B



Begin Project
SECTION 240200-3 (7B)

End Construction
SECTION 240200-3 (7B)

End Construction
SECTION 240200-4 (8)

ORANGE BLVD

WAYSIDE DRIVE



Section 8



WEKIVA PARKWAY

Completing Central Florida's Beltway

2020

2020

2020-21

2021

2019

2019

2018

2018

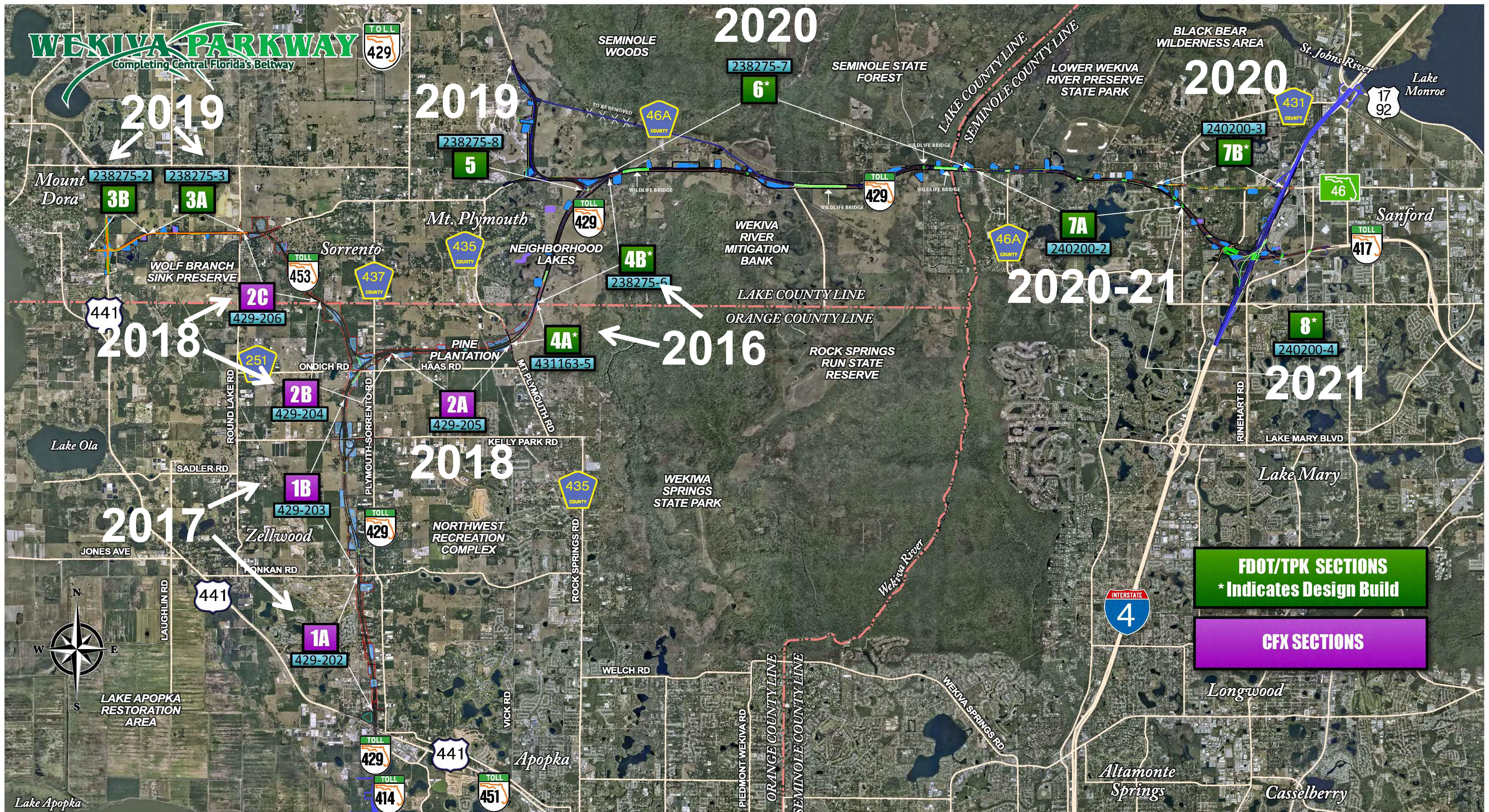
2017

2016



FDOT/TPK SECTIONS
* Indicates Design Build

CFX SECTIONS



238275-2
3B

238275-3
3A

238275-8
5

238275-7
6*

240200-3
7B*

240200-2
7A

240200-4
8*

429-206
2C

429-204
2B

429-203
1B

429-202
1A

429-205
2A

431163-5
4A*

238275-6
4B*

Mount Dora

WOLF BRANCH SINK PRESERVE

Sorrento

Mt. Plymouth

NEIGHBORHOOD LAKES

WEKIVA RIVER MITIGATION BANK

LAKE COUNTY LINE
ORANGE COUNTY LINE

ROCK SPRINGS RUN STATE RESERVE

WEKIVA SPRINGS STATE PARK

Lake Mary

LAKE APOPKA RESTORATION AREA

Lake Apopka

Lake Monroe

Sanford

Longwood

Altamonte Springs

Casselberry

SEMINOLE WOODS

SEMINOLE STATE FOREST

BLACK BEAR WILDERNESS AREA

LOWER WEKIVA RIVER PRESERVE STATE PARK

ROUND LAKE RD
SADLER RD
LAUGHLIN RD

PLYMOUTH-SORRENTO RD

KELLY PARK RD

ROCK SPRINGS RD

Apopka

VICK RD

WELCH RD

PIEDMONT WEKIVA RD

ORANGE COUNTY LINE

SEMINOLE COUNTY LINE

WEKIVA SPRINGS RD

RINEHART RD

LAKE MARY BLVD

437 COUNTY

435 COUNTY

46A COUNTY

431 COUNTY

46A COUNTY

17 92

417 TOLL

TOLL 429

TOLL 429

TOLL 429

TOLL 429

TOLL 429

TOLL 414

441

TOLL 451

INTERSTATE 4

441

441

251

453 TOLL

437 COUNTY

238275-2

238275-3

238275-8

238275-7

240200-3

240200-2

240200-4

429-204

429-203

429-202

429-205

431163-5

238275-6

FDOT/TPK SECTIONS
* Indicates Design Build

CFX SECTIONS

For More Information:

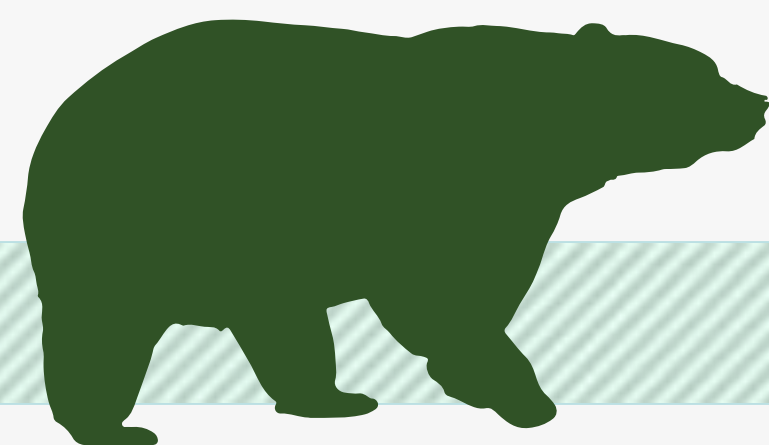
Mary Brooks

Public Information Officer

C: 407-694-5505

E: Info@wekivaparkway.com

W: www.wekivaparkway.com




WEKIVA PARKWAY
Completing Central Florida's Parkway

HOME | FDOT SECTIONS | CFY SECTIONS | SECTIONS BY COUNTY | PROJECT HISTORY | FAQ | CONTACT US

WELCOME

On behalf of the Florida Department of Transportation and the Central Florida Expressway Authority (CFE), formerly the Orlando-Orange County Expressway Authority, thank you for your interest in the Wekiva Parkway design and construction projects. The Wekiva Parkway (State Road 429) is a cooperative effort between these agencies and the Florida's Turnpike Enterprise.

The Wekiva Parkway (SR 429) would connect to SR 417, completing the beltway around northwest metropolitan Orlando. This estimated \$1.6 billion project includes \$200 million of non-toll road improvements including:

- Widening seven (7) miles of SR 429 in Lake and Seminole Counties
- Rebuilding the US 441/SR 429 Interchange in Mount Dora
- Shifting the CR 440 connection to SR 429 so wildlife can move more safely between habitats.

[Click here to view the overall Project Schedule.](#) Please understand schedules are subject to change due to a host of variables.

WEKIVA PARKWAY PROJECT SECTION MAP

Click on a Section Number for Project Details.



[Click here to view larger map.](#)

The 32-mile toll-free expressway will provide travel alternatives and relieve US 441, SR 429 and other area roads of traffic congestion resulting from growth and travel between Orange, Lake and Seminole Counties.

Authorized in 2002 by the Wekiva Parkway and Protection Act (Chapter 268, Part II, F.S.), this expressway has been heralded as a shining example for transportation planning through an environmentally sensitive area. Development of the Wekiva Parkway has included setting aside more than 2,400 acres of land for conservation. The parkway also will include numerous wildlife bridges, and will be largely elevated to reduce accidents between vehicles and wildlife.

HELPFUL LINKS

- Central Florida Expressway Authority
- Florida Department of Transportation
- Florida 211
- Journal
- 4-Prospect
- FDOT Central Florida Project
- Florida's Turnpike Enterprise

FOLLOW US

- Facebook
- Twitter

Copyright 2012. All rights reserved. Home | FDOT Sections | CFY Sections | Sections by County | Project History | FAQ | Contact Us
Public participation is welcomed without regard to race, color, national origin, age, sex, religion, disability or family status.

LATEST NEWS

- Click on link for details
- June 2011
More Than 100 Attend FDOT Section 3 Public Meeting Open House
- June 2011
Wekiva Parkway ROW Study Wins 2011 Engineering Excellence Award
- June 2011
Seminole County Commissioners Receive Update on Wekiva Parkway
- May 2011
Check Out the Latest Section 4.1 & 4.2 Construction Photos
- April 2011
More Than 200 Attend FDOT Public Meeting on Sections 2 & 3
- PUBLIC MEETING - 100 Plus Attend FDOT Section 3 Meeting**
- PROJECT DOCUMENTS**
- PRESENTATIONS**
- PRESS RELEASES**

CONTACT US

Mary Brooks
Public Information Officer
Info@wekivaparkway.com
407-694-5505

