

## PROJECT STATUS

The Wekiva Parkway will be designed and built in sections. Design projects are scheduled to take approximately 18-24 months, followed by right-of-way acquisition and permitting.

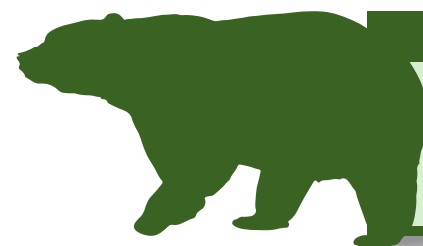
Both CFX and the FDOT will continue to communicate with – and solicit input from – the public during the design process. The public can also make comments and view project updates on the project website at [www.wekivaparkway.com](http://www.wekivaparkway.com). Full construction of the beltway's missing link is expected to take at least seven (7) years.

## PUBLIC MEETINGS

The agencies continue to schedule public meetings to engage the community as design concludes and more sections move into construction. You can expect more public meetings on various sections in 2015. To find out the latest information about public meetings and other project details, log onto [www.wekivaparkway.com](http://www.wekivaparkway.com).

Responsible Agency	Map Section Number	Project Limits	Status*
CFX	1A	From North of US 441 to North of Ponkan Road	Design complete. Construction starts spring 2015
CFX	1B	From North of Ponkan Road to North of a New Kelly Park Road Interchange	Design complete. Construction starts 2015
CFX	2A	From North of Kelly Park Road and East to CR 435/Mt. Plymouth Road	Design complete. Construction starts 2017
CFX	2B	Systems Interchange West of Plymouth Sorrento Road and Ondich Road/Haas Road	Final design to reach 100% spring 2015
CFX	2C	From East of Round Lake Road to the Lake Co.-Orange Co. Line	Final design to reach 100% early 2015
FDOT	3A	SR 46 From East of Pond Road to East of Round Lake Road	Final design to reach 100% Dec. 2014
FDOT	3B	SR 46 From West of US 441 to West of Vista View Lane	Final design to reach 90% early 2015
FDOT	4A	From CR 435/Mt. Plymouth Road to Orange Co./Lake Co. Line	Construction to finish spring 2015
FDOT	4B	From Orange Co./Lake Co. Line to West of Old McDonald Road	Construction to finish spring 2015
FDOT	5	CR 46A Realignment from North of Arundel Way to SR 46	Final design to reach 90% Dec. 2014
FDOT	6	From West of Old McDonald Road to East of Wekiva River Road	Final design to reach 60% spring 2015
FDOT	7A	From East of Wekiva River Road to Orange Boulevard	Final design to reach 60% Dec. 2014
FDOT	7B	From West of Center Road to Interstate 4	Design to start 2016
FDOT	8	From Orange Boulevard to East of Rinehart Road including the SR 417/I-4 Interchange	Advertise for bids 2017

\*Please be advised that schedules are subject to change.



### CONTACT INFORMATION

Log onto the project website: [www.wekivaparkway.com](http://www.wekivaparkway.com)

Or contact:

**Mary Brooks**, Public Information Officer  
407-694-5505 or [info@wekivaparkway.com](mailto:info@wekivaparkway.com)  
Follow us on Facebook and Twitter

# WEKIVA PARKWAY (SR 429) DESIGN & CONSTRUCTION PROJECTS

Orange, Lake and Seminole Counties, Florida

WINTER 2014

## PROJECT OVERVIEW

The Wekiva Parkway (State Road 429) will connect to SR 417, completing the beltway around northwest metropolitan Orlando. The planned 25-mile tolled expressway will provide travel alternatives and relieve US 441, SR 46 and other area roads of traffic congestion resulting from growth and travel between Orange, Lake and Seminole Counties. The parkway also will help improve safety and reduce vehicle crash fatalities, particularly on SR 46.

This is a cooperative effort between the Florida Department of Transportation (FDOT), the Central Florida Expressway Authority (CFX) and the Florida's Turnpike Enterprise. CFX is primarily responsible for the Orange County portion, while the FDOT is responsible for the portions in Lake and Seminole counties.

The parkway will feature all electronic tolling for the greatest customer convenience and to maximize traffic flow. This estimated \$1.6 billion project also includes approximately \$500 million of non-toll road improvements including:

- Widening seven (7) miles of SR 46 to four or six lanes in Lake and Seminole Counties
- Rebuilding the US 441/SR 46 interchange in Mount Dora
- Relocating part of CR 46A out of the state forest to provide improved wildlife connectivity

## PROTECTING THE ENVIRONMENT

Authorized in 2004 by the Wekiva Parkway and Protection Act (Chapter 369, Part III, F.S.), this expressway has been heralded as a shining example for transportation planning through an environmentally sensitive area.

Among the primary goals are to meet regional mobility needs while minimizing impacts to the Wekiva River Basin and improving wildlife habitat connectivity between conservation lands. Development of the expressway has included setting aside more than 3,400 acres of land for conservation. The parkway also will include numerous wildlife bridges, and will be largely elevated to reduce accidents between vehicles and wildlife.

## ACCESS IMPROVEMENTS

The parkway will provide access to private properties and a non-tolled option for local trips from the County Road 46A realignment in Lake County to Orange Boulevard (CR 431) in Seminole County. That will be accomplished by a new two-lane, non-tolled service road parallel to the Wekiva Parkway.

## PROJECT HISTORY

The FDOT and CFX collaborated on a Project Development and Environment Study beginning in January 2005. The study engaged thousands of state and local agency staff and community members in developing and evaluating alternatives that meet the region's transportation needs, while also seeking to minimize public and environmental impacts.

The Federal Highway Administration (FHWA) on May 11, 2012 approved the Wekiva Parkway. The FHWA issued a Finding of No Significant Impact (FONSI), accepting the location and design concept. This allowed the project to move forward for design and construction.

### CONTACT INFORMATION

Log onto the project website: [www.wekivaparkway.com](http://www.wekivaparkway.com)

Or contact:

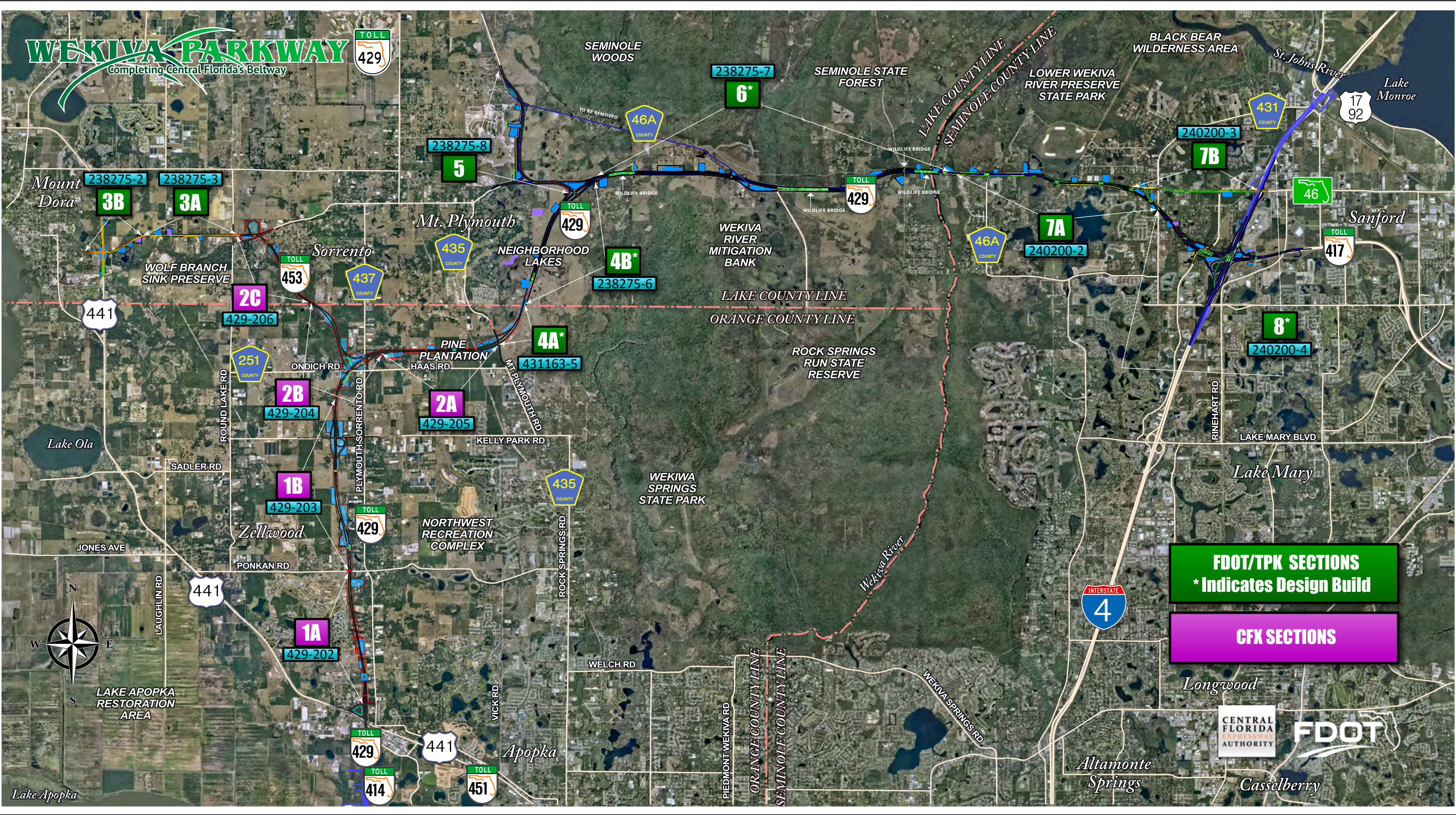
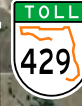
**Mary Brooks**, Public Information Officer  
407-694-5505 or [info@wekivaparkway.com](mailto:info@wekivaparkway.com)  
Follow us on Facebook and Twitter





# WEKIVA PARKWAY

Completing Central Florida's Beltway



**FDOT/TPK SECTIONS**  
\* Indicates Design Build

**CFX SECTIONS**



**FDOT**



Lake Apopka

