

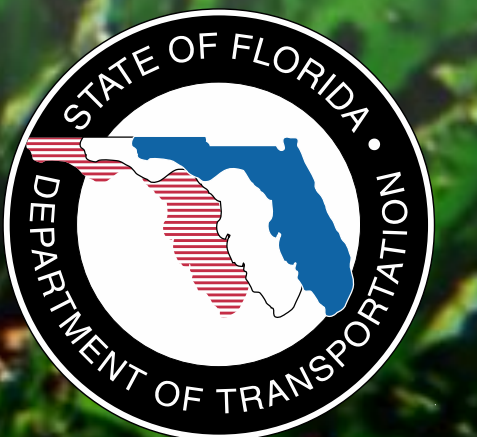
WEKIWA PARKWAY

Completing Central Florida's Beltway



A Regional Transportation Solution

Mount Dora Chamber of Commerce
February 13, 2013

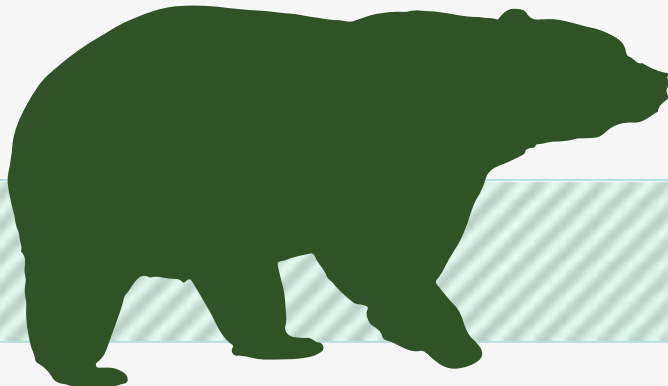
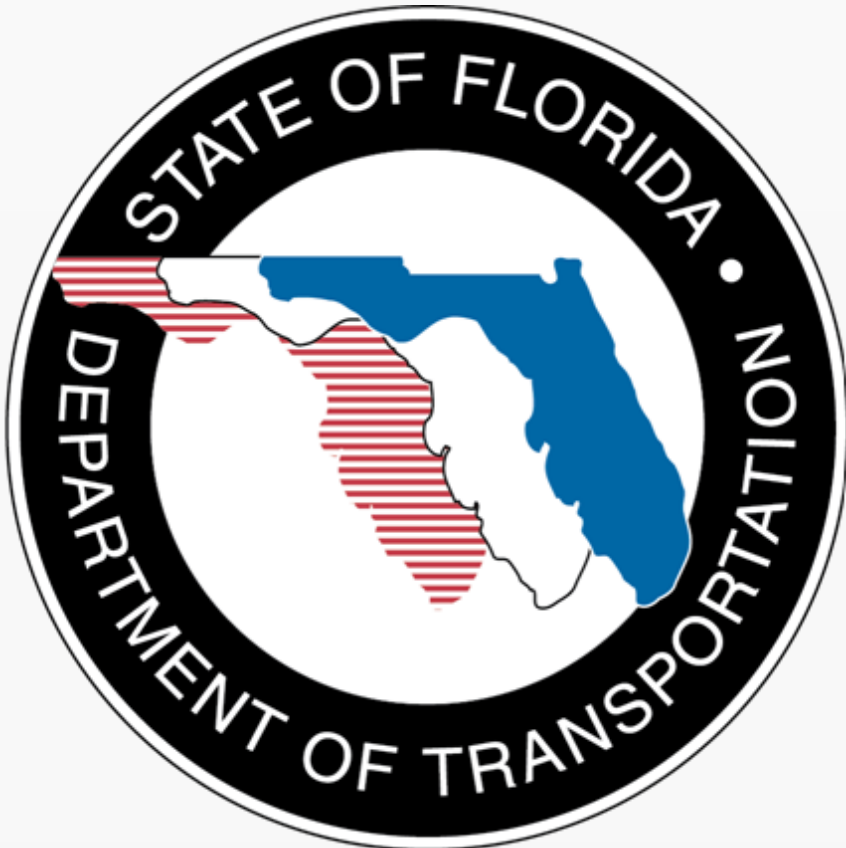


Project Description

- **\$1.7 Billion Completion of Central Florida's Beltway**
- **25-mile Toll Road**
- **Non-Toll Road Improvements:**
 - **4- and 6-Laning about 7 Miles of SR 46 in Lake and Seminole Counties**
 - **Rebuilding the US 441/SR 46 Interchange in Mount Dora**
 - **Relocating CR 46A to Improve Wildlife Connectivity**
 - **Parallel Service Roads in East Lake and Seminole Counties**
- **Connectivity to SR 417 and I-4 Corridors**



Funding Partners

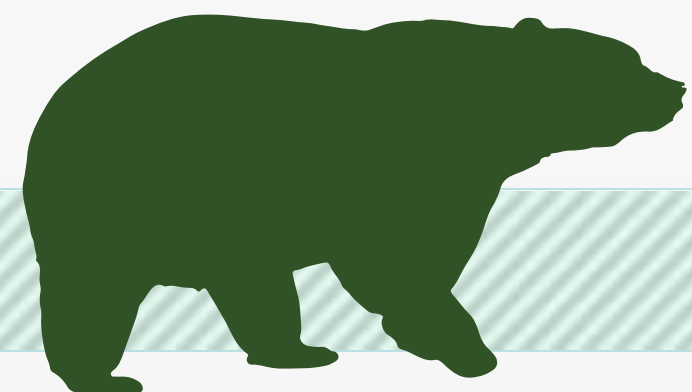
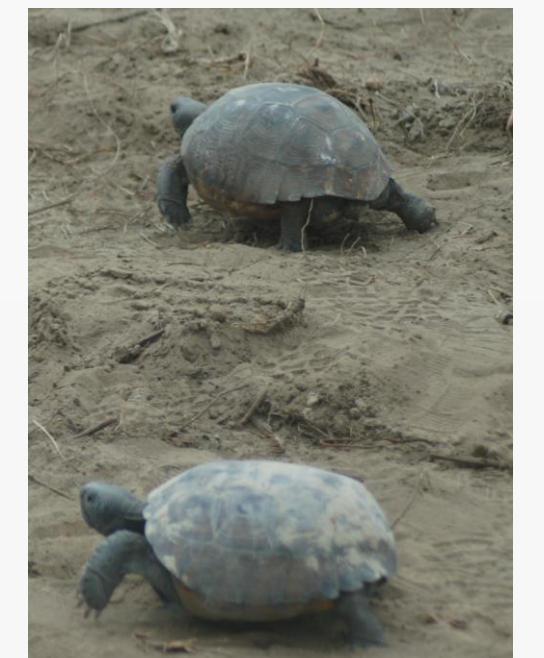
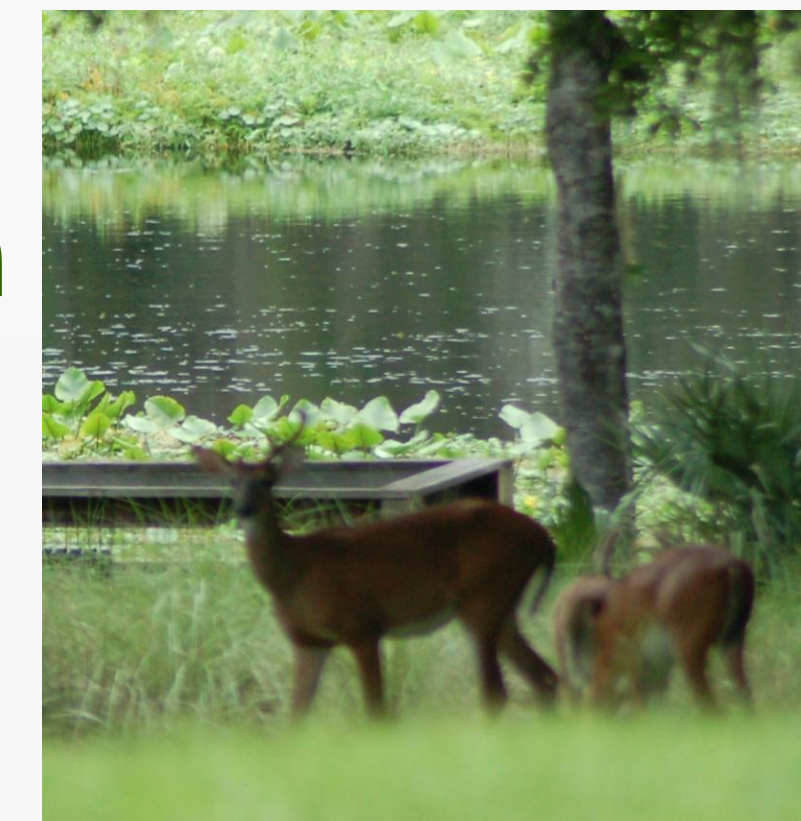


WEKIVA PARKWAY



Protecting Nature

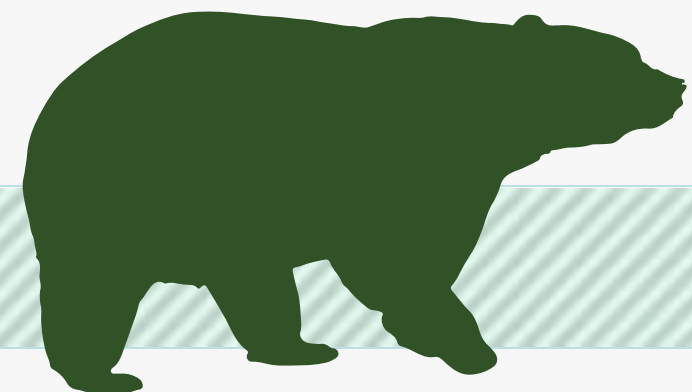
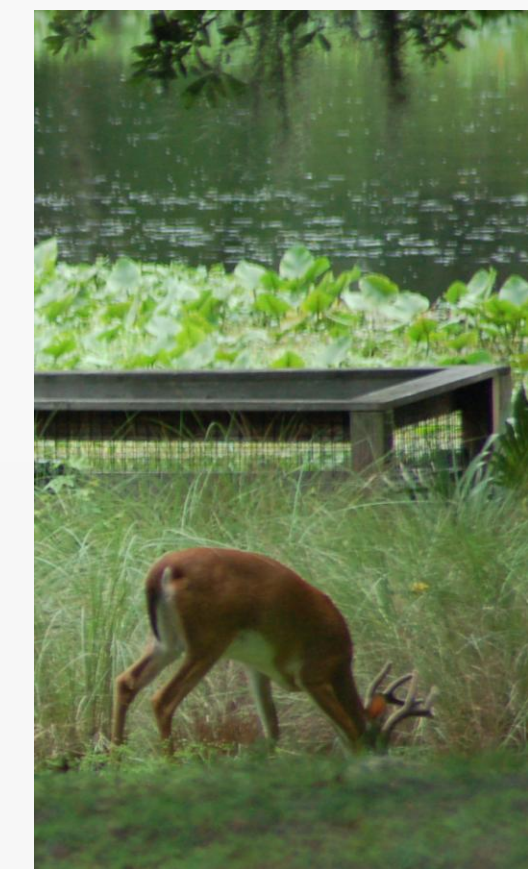
- **Wekiva River: Outstanding Florida Water, State & National Wild & Scenic River**
- **Authorized by the 2004 Wekiva Parkway and Protection Act**
 - **Setting Aside More than 3,400 Acres for Conservation**
 - **Largely Elevated to Reduce Accidents Between Vehicles & Wildlife**
 - **Several Wildlife Bridges**



Regional Project

By the Numbers:

- 3 Agencies
- 14 Project Sections
- 3 Counties, 3 Cities, State & Federal Agencies
- Wekiva River Basin Area Task Force, Coordinating Committee & Wekiva River Basin Commission
- 30,000+ Property Owners in PD&E Study Area
- 400+ Community & Agency Stakeholder Meetings
- 9 Public Meetings & Hearings Drawing 3,600 People



Milestones

- **FHWA Approved Project Development and Environment Study – May 2012**
- **Memorandum of Understanding between FDOT and OOCEA – May 2012**
- **Acquisition and Restoration Council – Public Hearing for Sections 4A/4B – August 2012**
- **Section 4A/4B Design-Build Contract Executed – November 2012**



PROJECT ECONOMIC IMPACT

At an estimated cost of \$1.7 Billion for Engineering & Construction, the Wekiva Parkway is Projected to Provide:

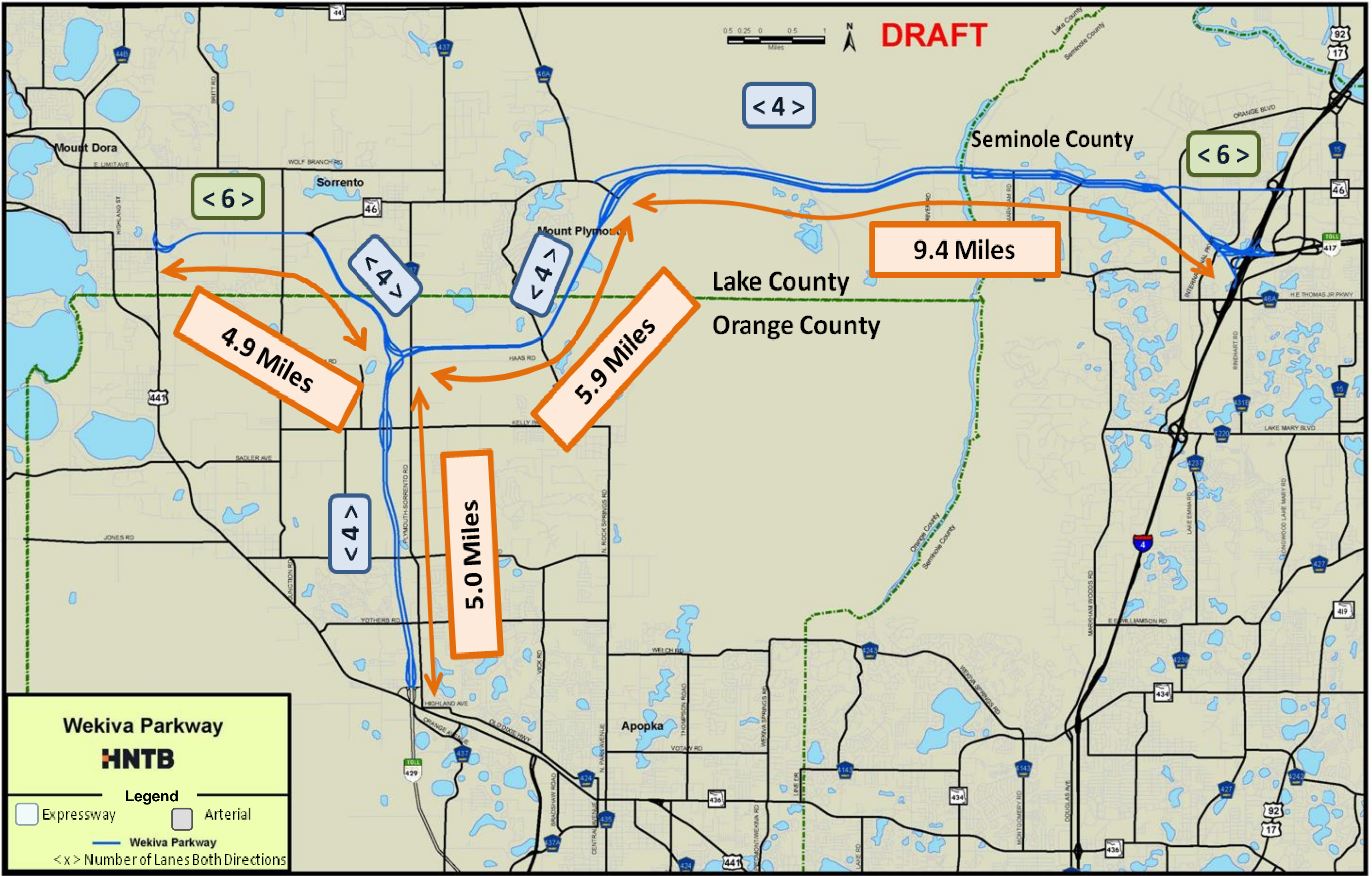
Construction Related Jobs	11,536
Supporting Industries Jobs	5,236
Induced Employment Jobs	16,905

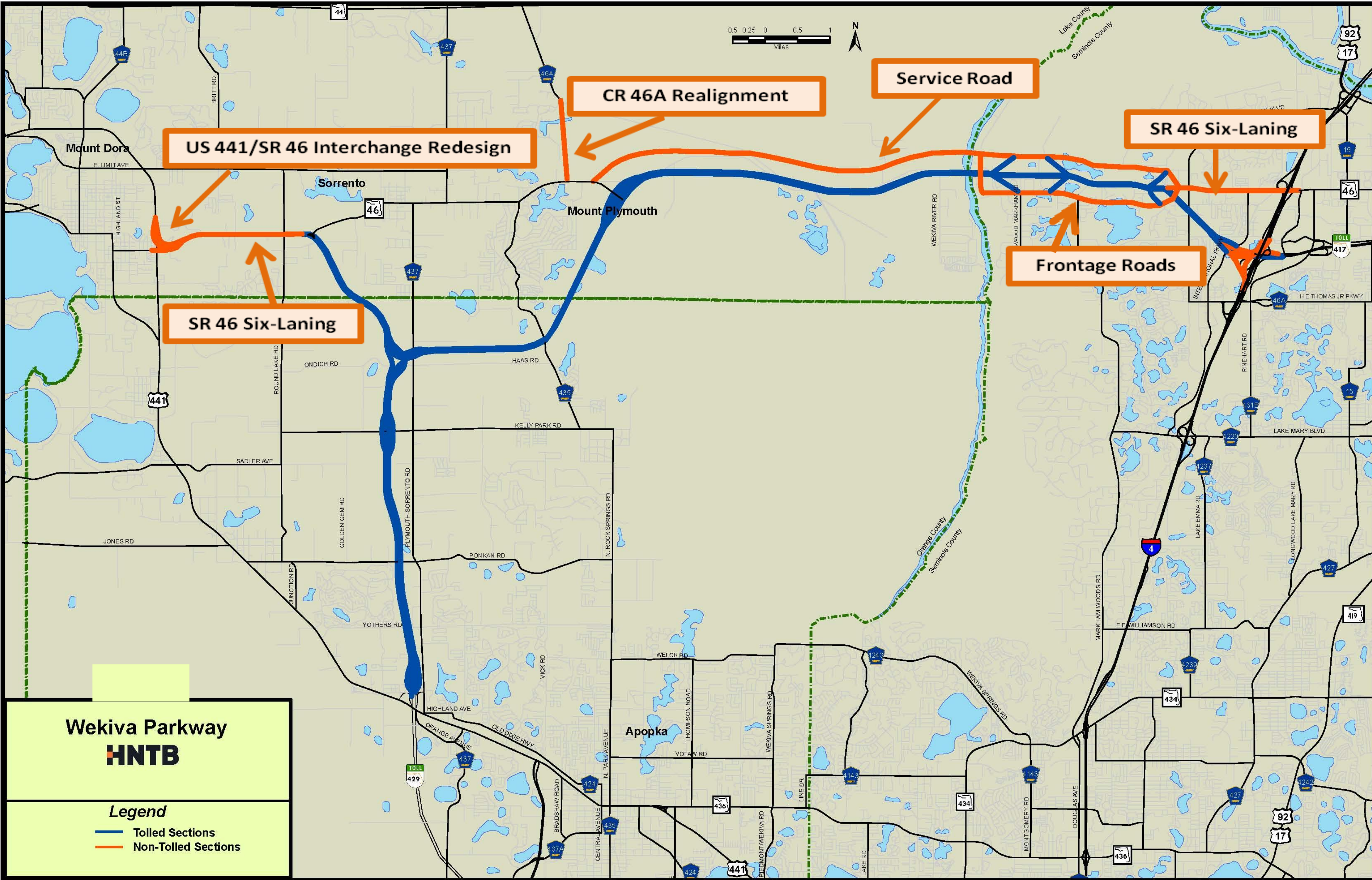
***Estimated Total Jobs 33,677**

- *Source: Orlando-Orange County Expressway Authority Research*

Project Segments







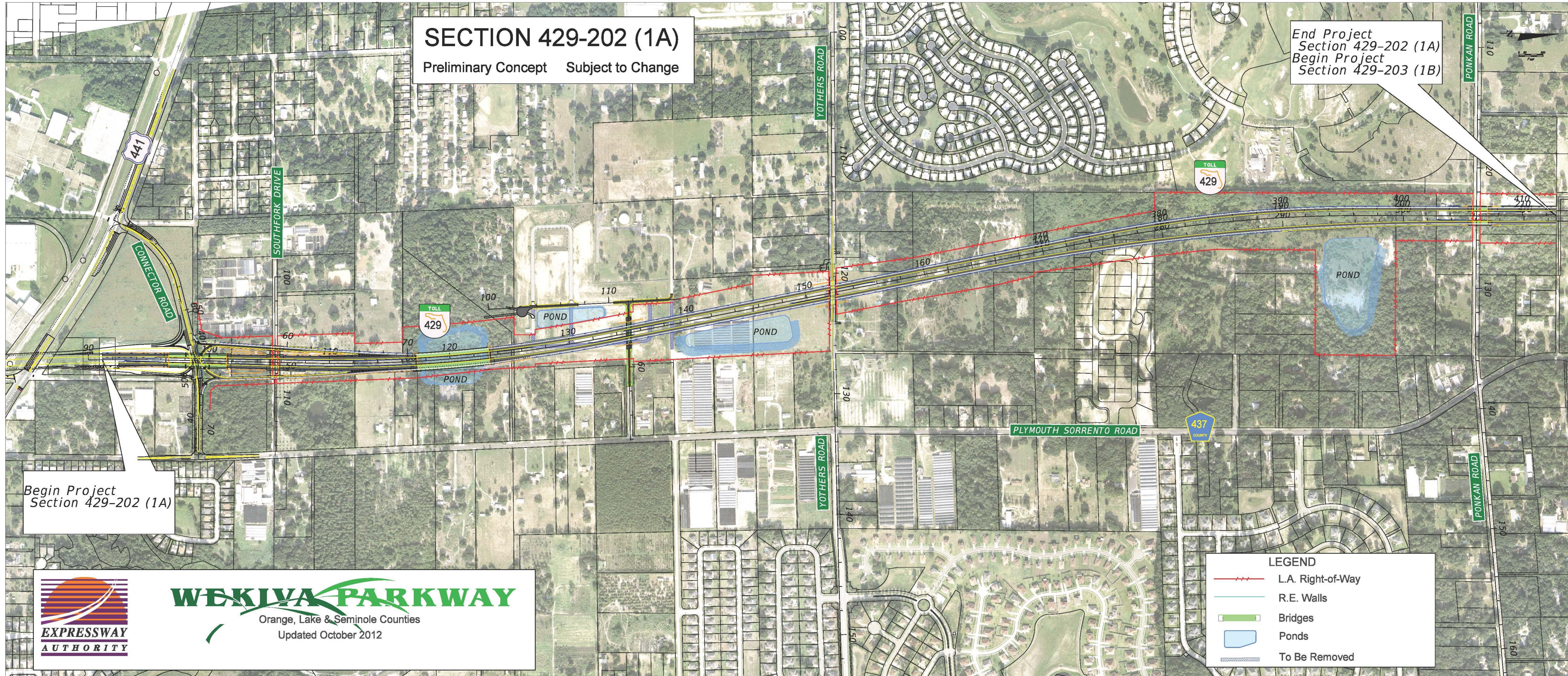
Wekiva Parkway
HNTB

- Legend**
- Tolled Sections
 - Non-Tolled Sections

Expressway Authority Sections



Section 1A



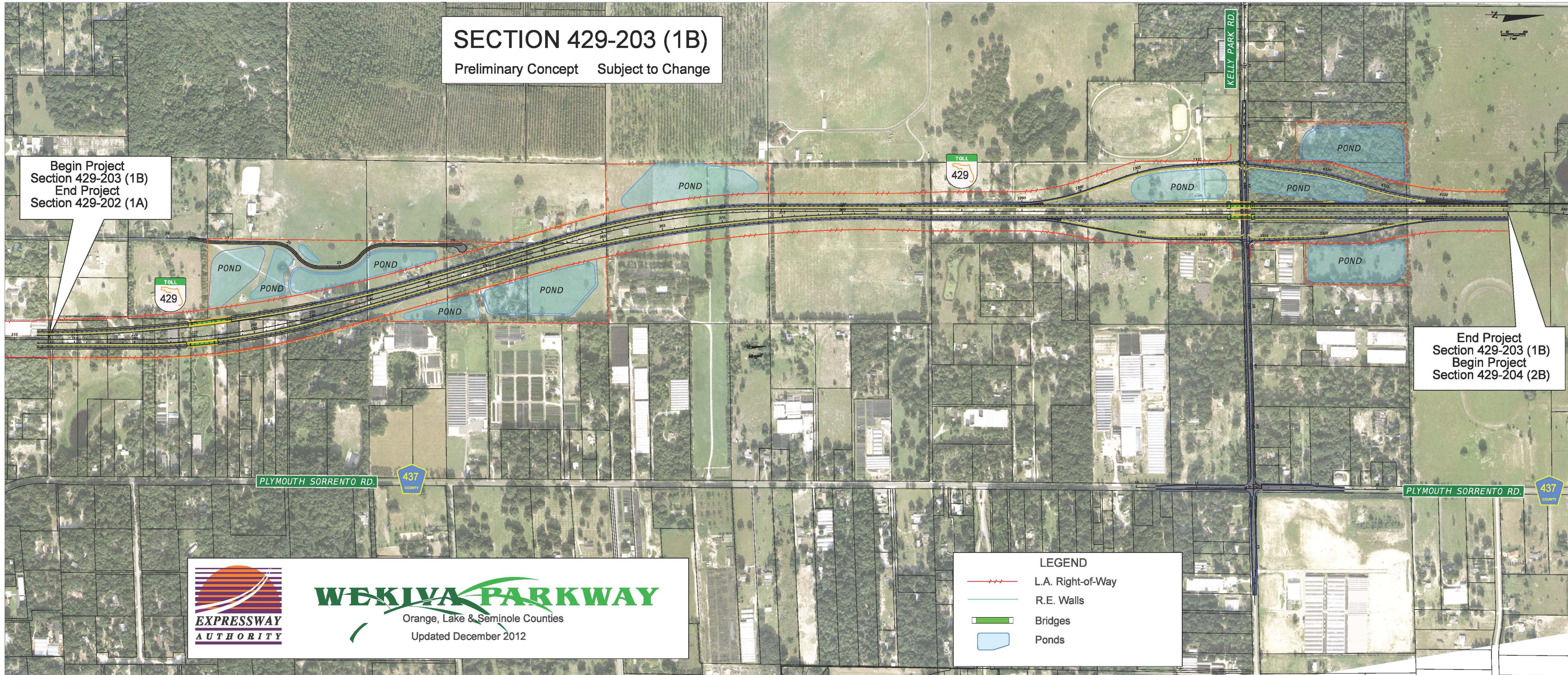
Section 1B

SECTION 429-203 (1B)

Preliminary Concept Subject to Change

Begin Project
Section 429-203 (1B)
End Project
Section 429-202 (1A)

End Project
Section 429-203 (1B)
Begin Project
Section 429-204 (2B)



Section 2A



WEKIYA PARKWAY
Orange, Lake & Seminole Counties
June 2012

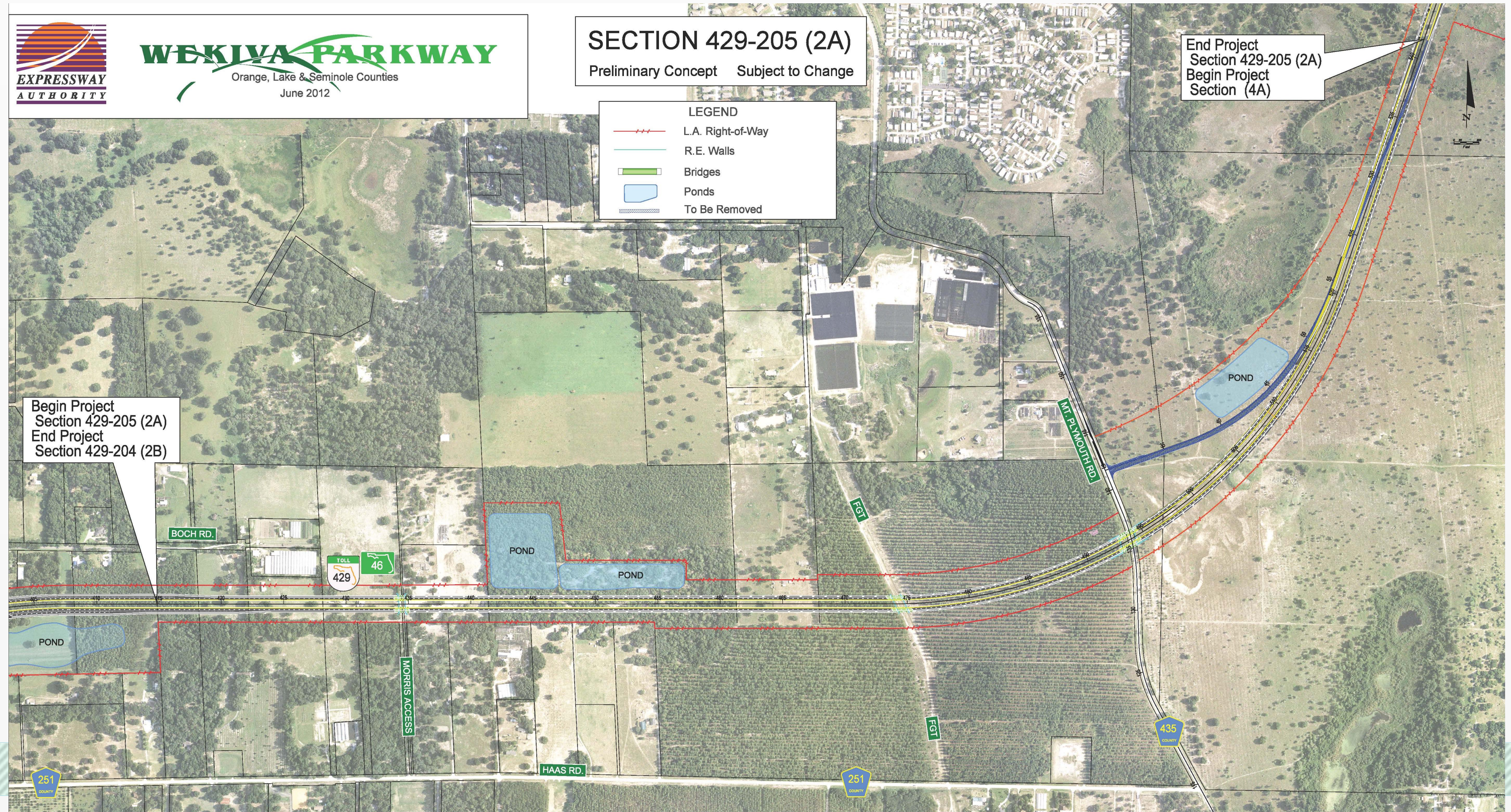
SECTION 429-205 (2A) Preliminary Concept Subject to Change

LEGEND

- L.A. Right-of-Way
- R.E. Walls
- Bridges
- Ponds
- To Be Removed

End Project
Section 429-205 (2A)
Begin Project
Section (4A)

Begin Project
Section 429-205 (2A)
End Project
Section 429-204 (2B)



251
COUNTY

251
COUNTY

435
COUNTY

TOLL
429

46

POND

POND

POND

BOCH RD.

MORRIS ACCESS

HAAS RD.

MT. PL. MOUTH RD.

FGT

FGT



FDOT Sections



Section 3A



Section 4A & 4B

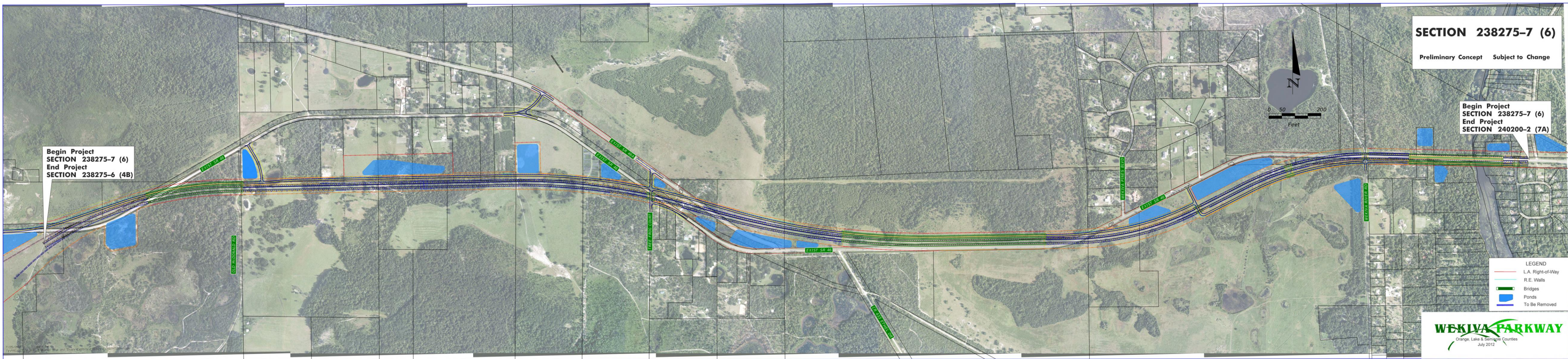


Section 4A & 4B – Gopher Tortoise Relocation

- FFWCC Permit
- 107 Tortoises Recovered (Feb. 7)
- 285 Burrows Cleared
- All Burrowing Owls Relocated



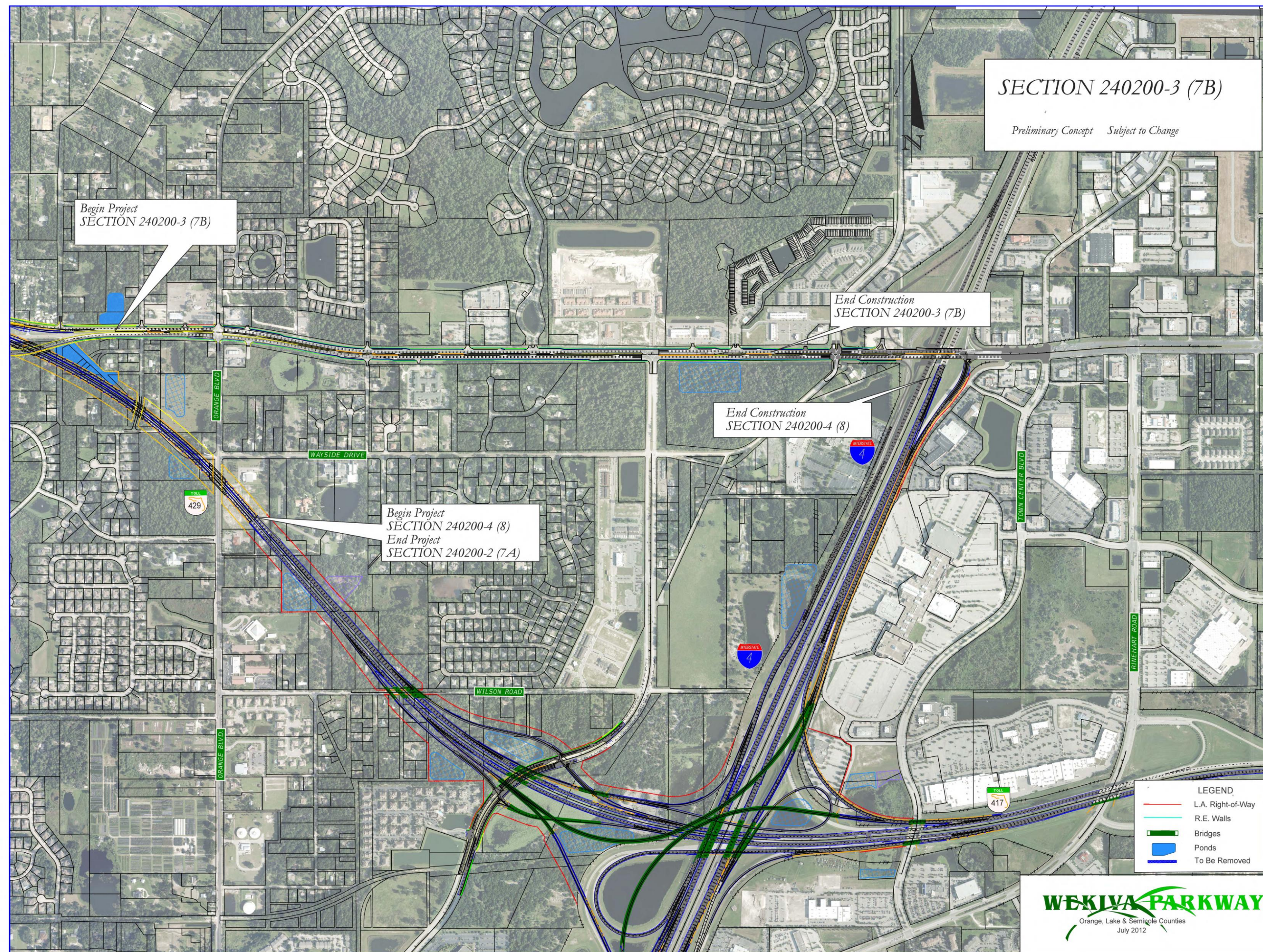
Section 6



Section 7A



Sections 7B & 8



Project Status

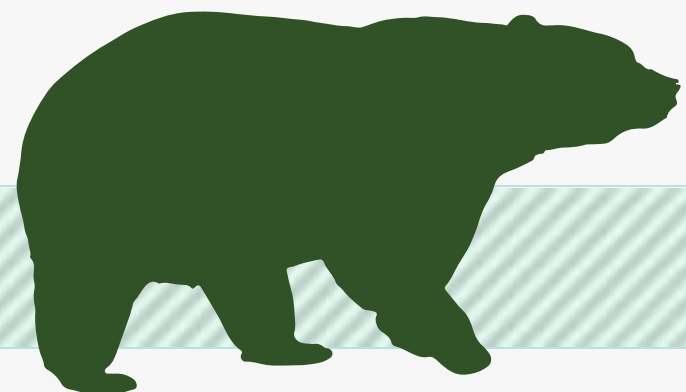
Final Design

- OOCEA Sections 1A, 1B – 60% complete plans Feb. 2013
- OOCEA Section 2A – 30% complete plans Feb. 2013
- OOCEA Section 2B – 30% complete plans March 2013
- OOCEA Section 2C – Began Jan. 2013

- * FDOT Section 3A – Design begins May-June 2013
- * FDOT Section 3B – Design to reach 30% plans Apr.-May 2013
- * FDOT Section 5 – Design starts Feb. 2013
- * FDOT Section 6 – Design starts March-Apr. 2013
- FDOT Section 7A – Design starts June-July 2013

Construction

- * FDOT Section 4A & 4B – Clearing & grubbing starts Feb. 2013
- **Wekiva Parkway Complete - Fall 2021**



What's Next?

- **Final Design Underway**
- **Continued community coordination**
- **Opportunities for Community Input**
 - ✓ **Mount Dora City Council:** March 5 Interchange Concepts
 - ✓ **Section 1 Public Meeting:** March 21, 2013 6 p.m.- 8 p.m.
 - Apopka High School Cafeteria
 - ✓ **Community Presentations**
 - ✓ **Updates & Comments via Website:** www.wekivaparkway.com



For More Information:

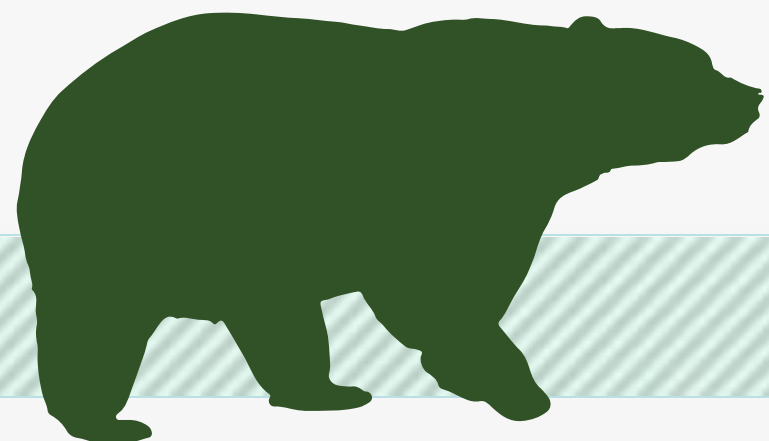
Mary Brooks

Public Involvement Coordinator

C: 407-694-5505

E: Info@wekivaparkway.com

W: www.wekivaparkway.com



The screenshot shows the homepage of the Wekiva Parkway website. At the top, the logo reads "WEKIVA PARKWAY" with the tagline "Completing Central Florida's Beltway" and a "TOLL 429" icon. A navigation menu includes "HOME", "FDOT PROJECTS", "OOCEA PROJECTS", "PROJECTS BY COUNTY", "PROJECT HISTORY", and "CONTACT US".

The main content area features a "WELCOME" section with a message from the Florida Department of Transportation and the Orlando-Orange County Expressway Authority. It describes the project as a cooperative effort and lists key features: building seven miles of four- and six-laning of SR 46, rebuilding the US 441/SR 46 interchange, and relocating the CR 46A connection. Below this is a "WEKIVA PARKWAY PROJECT SECTION MAP" with a legend for "FOOT/TPK SECTION" (indicating Design Build) and "OOCEA SECTION".

On the right side, there is a "LATEST NEWS" section with several entries: "May 2012: FDOT Advertises for Section 3B Design Firm", "June 2012: OOCEA Advertises for Section 2C Design Firm", "August 2012: FDOT Advertises for Section 5 Design Firm", "October 2012: Design-Build Team Selected for Sections 4A & 4B", and "Fall 2012: Wekiva Parkway Groundbreaking". Below the news is a "PROJECT DOCUMENTS" section with links for "PRESENTATIONS", "PRESS RELEASES", and "PUBLIC MEETING NOTICES". A small photo of a wetland is shown under "All News". At the bottom right, a "CONTACT US" section lists "Mary Brooks".

twitter

facebook

WEKIWA PARKWAY

Completing Central Florida's Beltway



Thank You!
Questions?

