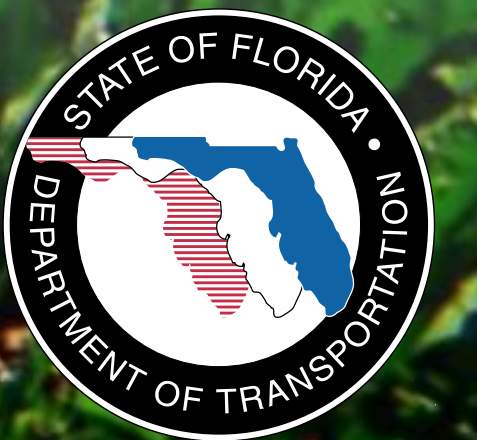




A Regional Transportation Solution

Plymouth Community Improvement Association
February 5, 2013

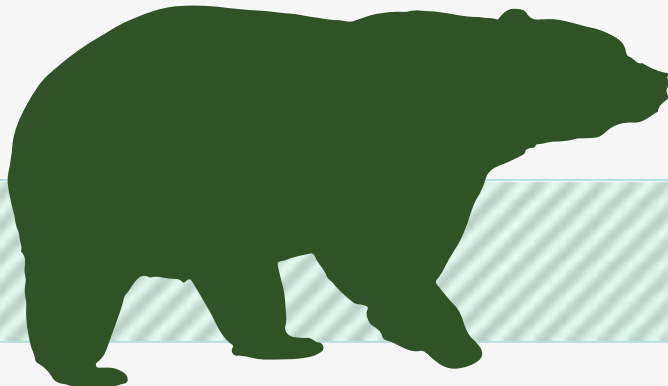
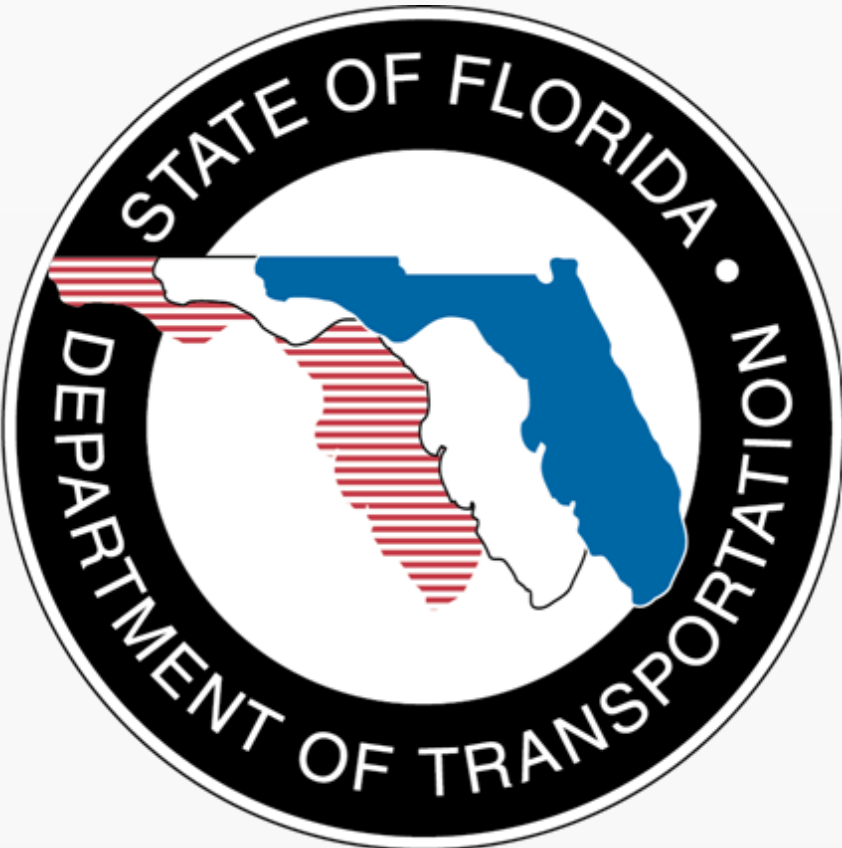


Project Description

- **\$1.7 Billion Completion of Central Florida's Beltway**
- **25-mile Toll Road**
- **Non-Toll Road Improvements:**
 - **4- and 6-Laning about 7 Miles of SR 46 in Lake and Seminole Counties**
 - **Rebuilding the US 441/SR 46 Interchange in Mount Dora**
 - **Relocating CR 46A to Improve Wildlife Connectivity**
 - **Parallel Service Roads in East Lake and Seminole Counties**
- **Connectivity to SR 417 and I-4 Corridors**



Funding Partners

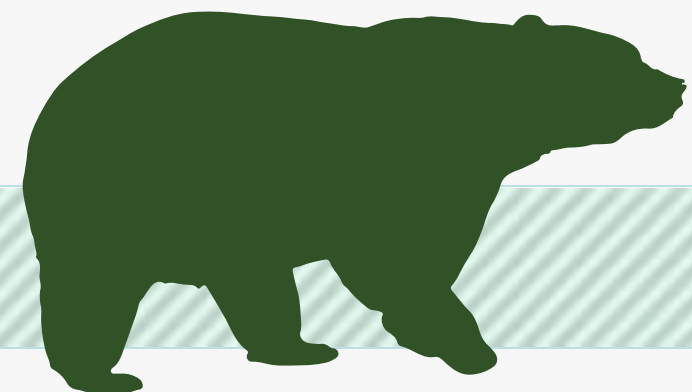
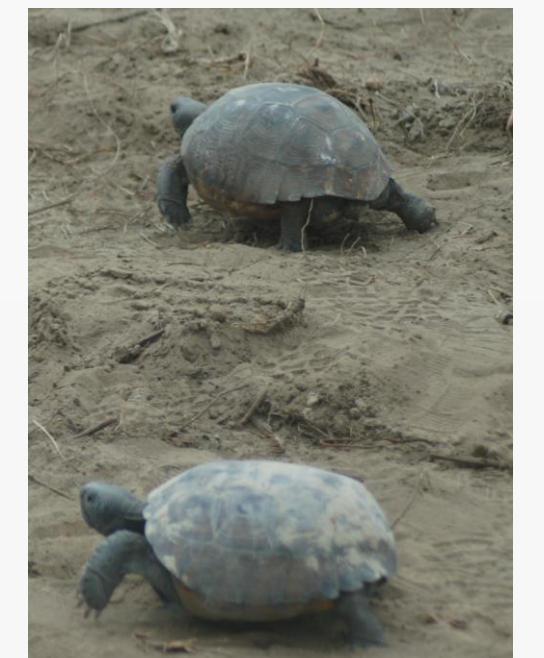
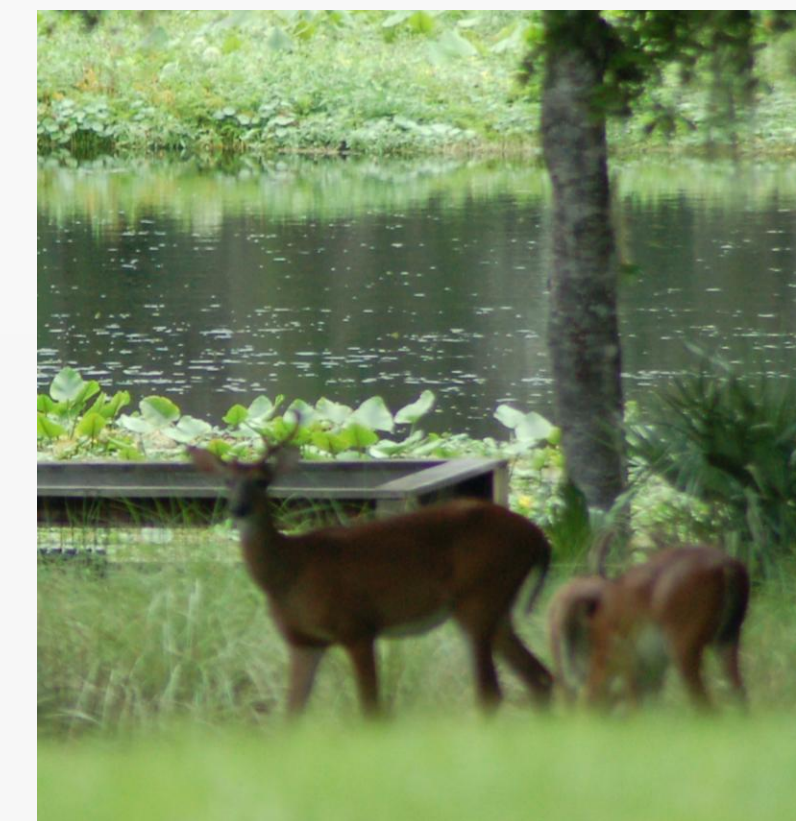


WEKIVA PARKWAY



Protecting Nature

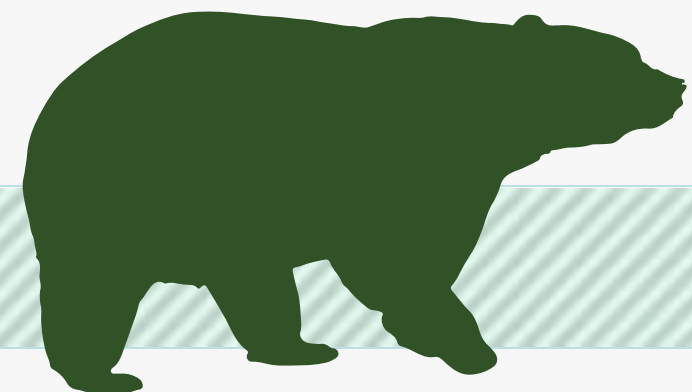
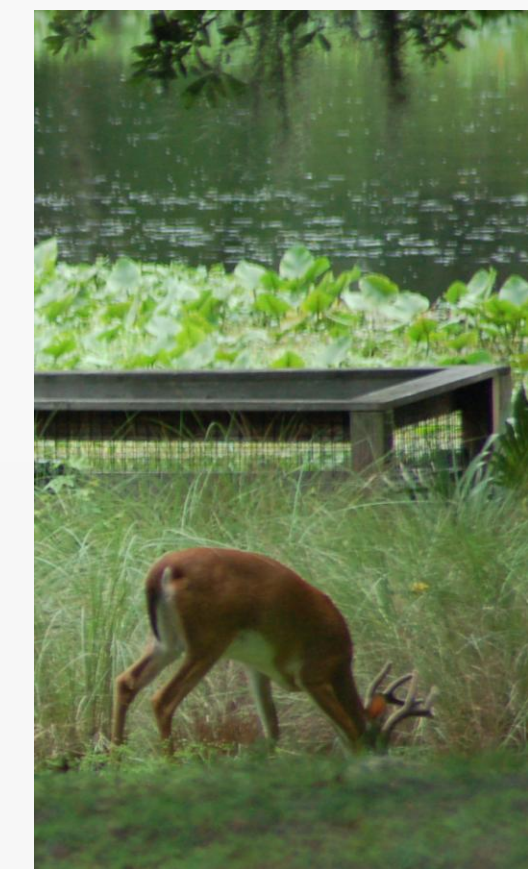
- **Wekiva River: Outstanding Florida Water, State & National Wild & Scenic River**
- **Authorized by the 2004 Wekiva Parkway and Protection Act**
 - **Setting Aside More than 3,400 Acres for Conservation**
 - **Largely Elevated to Reduce Accidents Between Vehicles & Wildlife**
 - **Several Wildlife Bridges**



Regional Project

By the Numbers:

- 3 Agencies
- 14 Project Sections
- 3 Counties, 3 Cities, State & Federal Agencies
- Wekiva River Basin Area Task Force, Coordinating Committee & Wekiva River Basin Commission
- 30,000+ Property Owners in PD&E Study Area
- 400+ Community & Agency Stakeholder Meetings
- 9 Public Meetings & Hearings Drawing 3,600 People



Milestones

- **FHWA Approved Project Development and Environment Study – May 2012**
- **Memorandum of Understanding between FDOT and OOCEA – May 2012**
- **Acquisition and Restoration Council – Public Hearing for Sections 4A/4B – August 2012**
- **Section 4A/4B Design-Build Contract Executed – November 2012**



PROJECT ECONOMIC IMPACT

At an estimated cost of \$1.7 Billion for Engineering & Construction, the Wekiva Parkway is Projected to Provide:

Construction Related Jobs	11,536
Supporting Industries Jobs	5,236
Induced Employment Jobs	16,905

***Estimated Total Jobs 33,677**

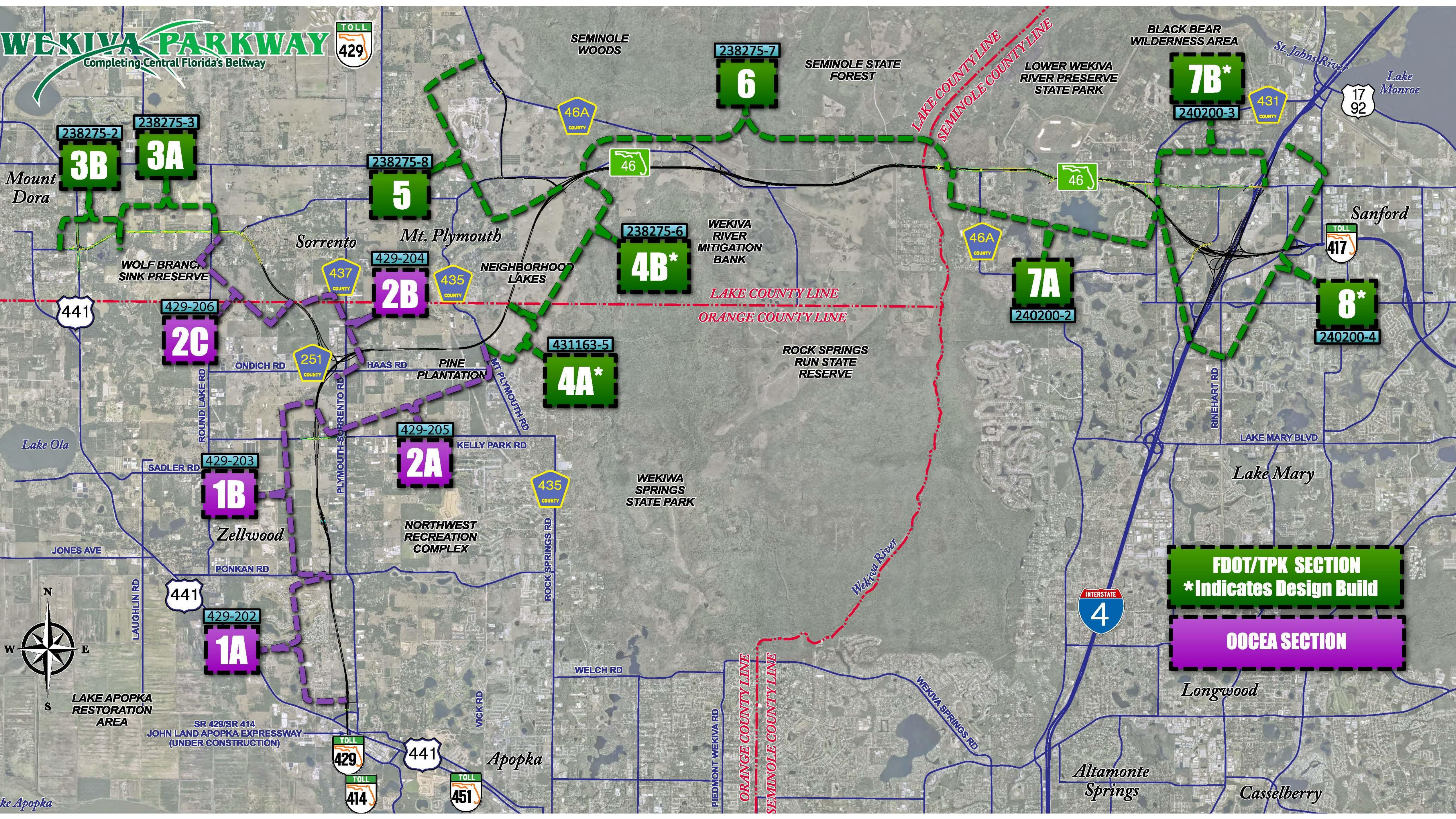
- *Source: Orlando-Orange County Expressway Authority Research*

Project Segments



WEKIWA PARKWAY

Completing Central Florida's Beltway



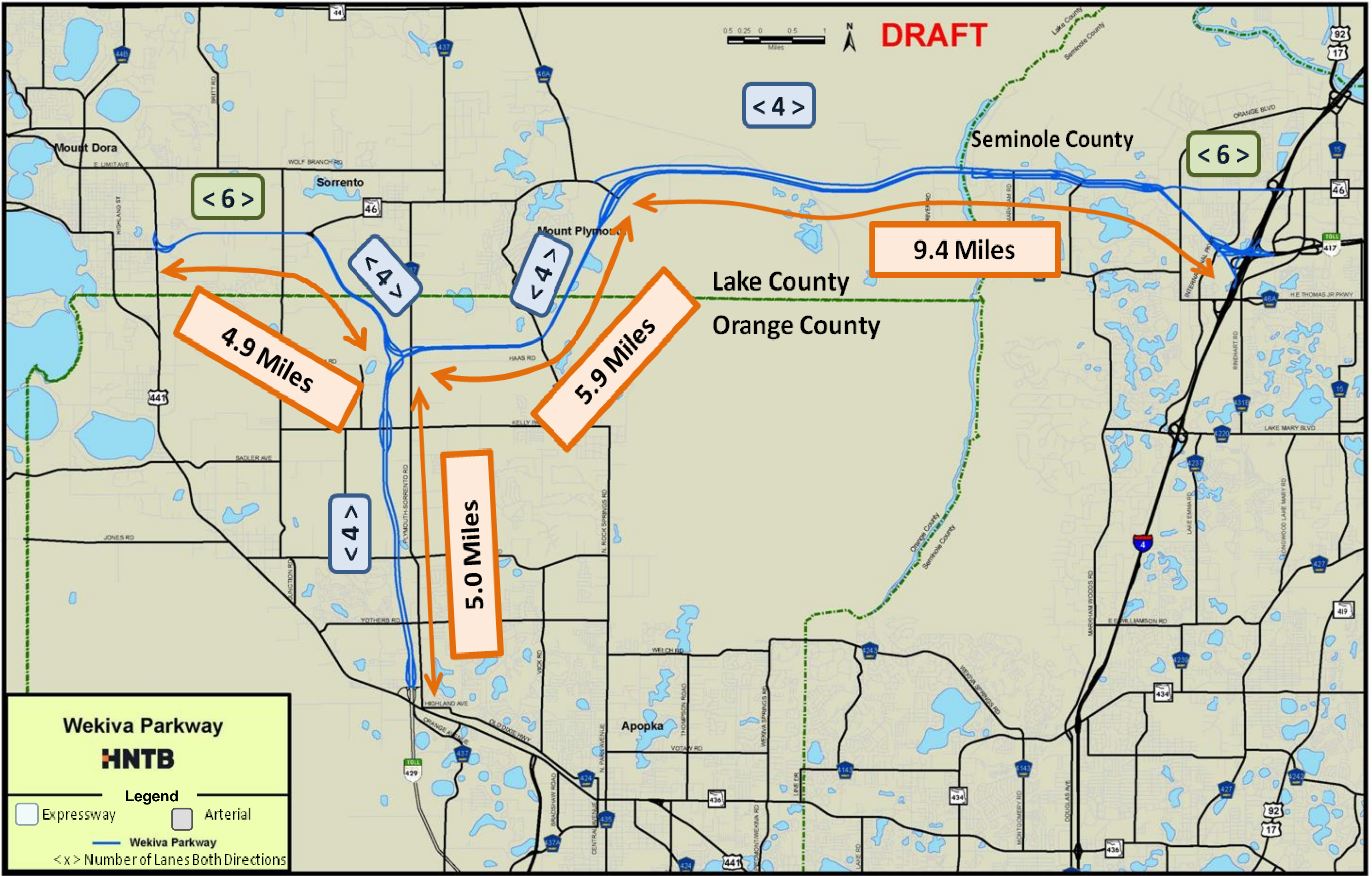
LAKE APOPKA RESTORATION AREA

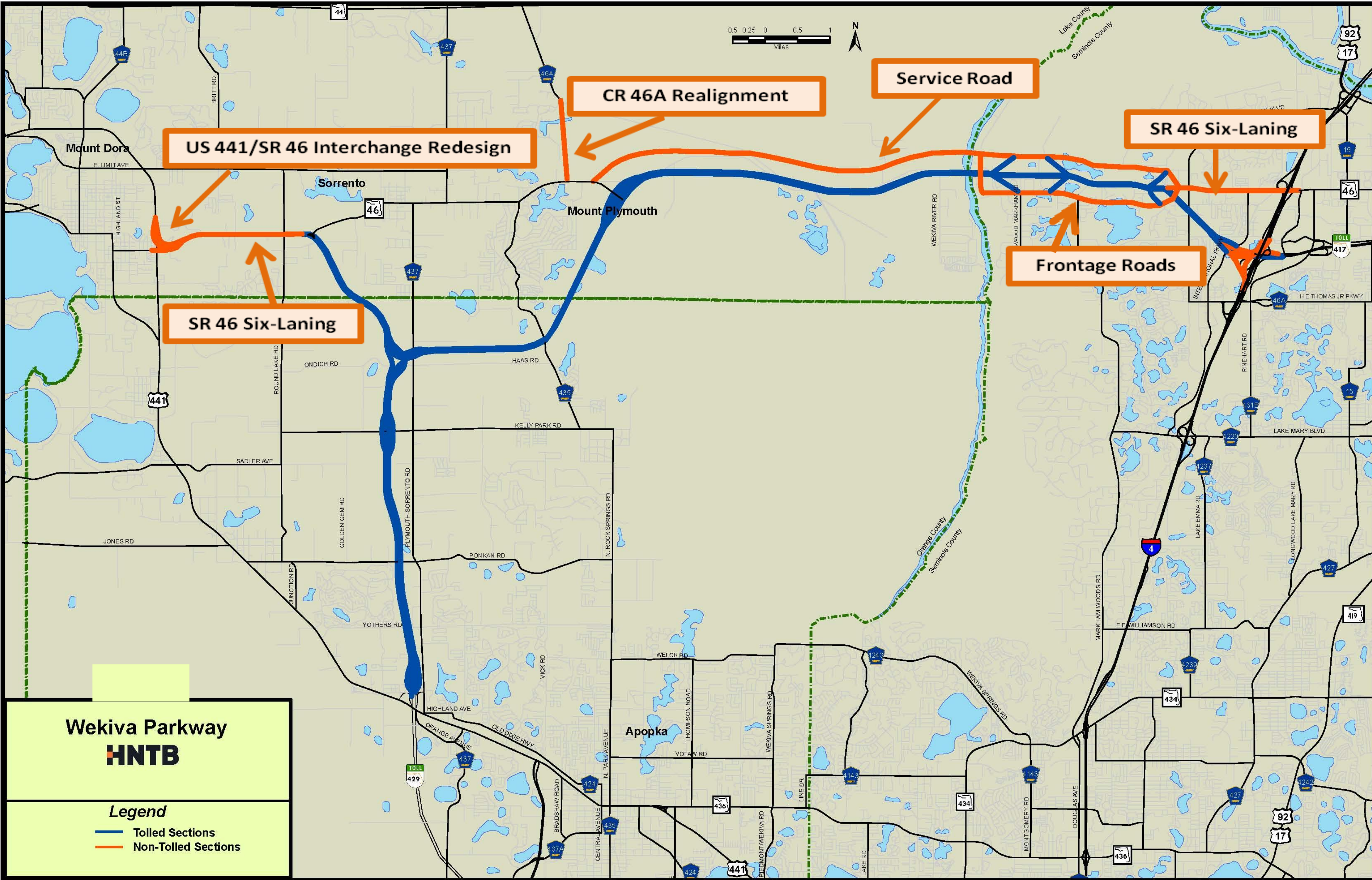
SR 429/SR 414 JOHN LAND APOPKA EXPRESSWAY (UNDER CONSTRUCTION)

FDOT/TPK SECTION
*Indicates Design Build

OOCEA SECTION

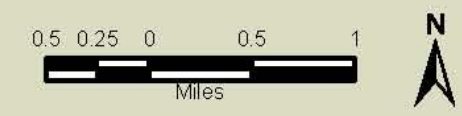






Wekiva Parkway
HNTB

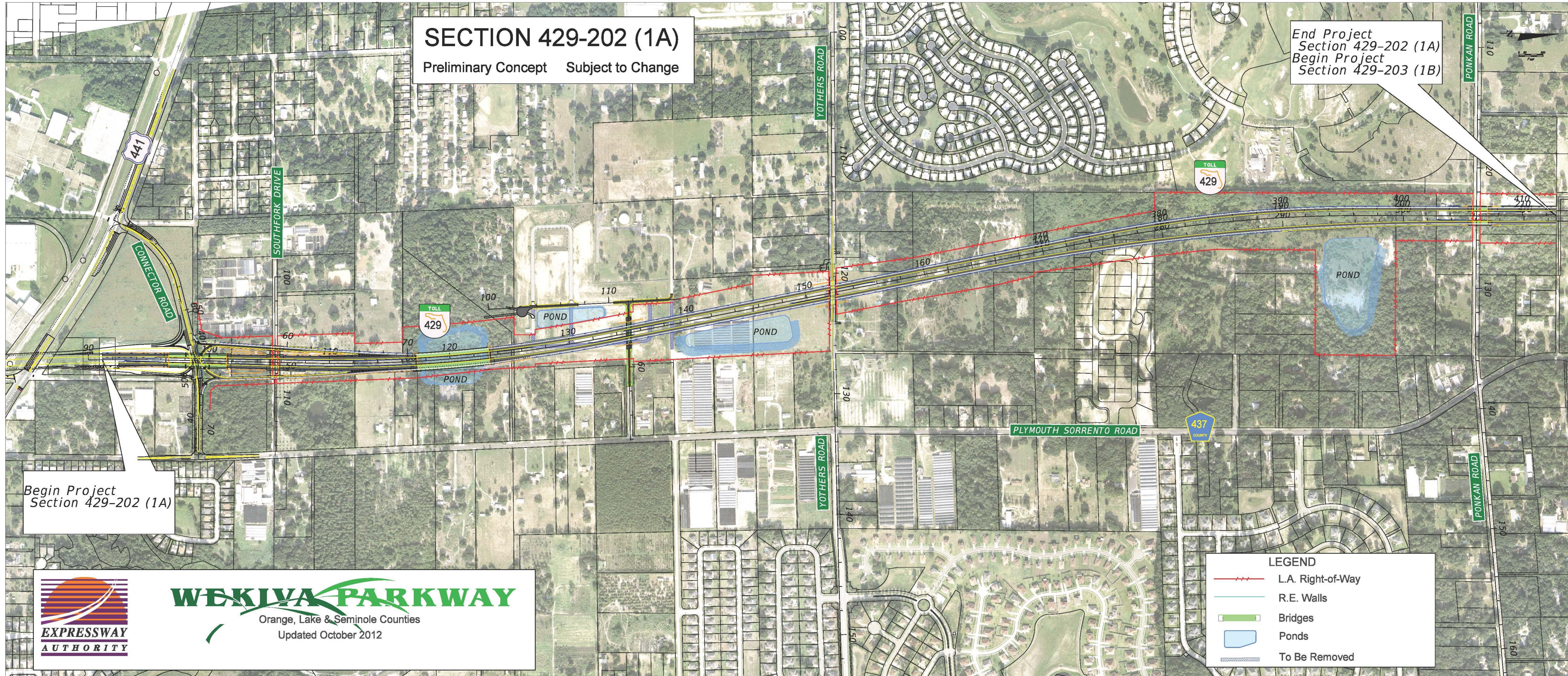
- Legend**
- Tolled Sections
 - Non-Tolled Sections



Expressway Authority Sections



Section 1A



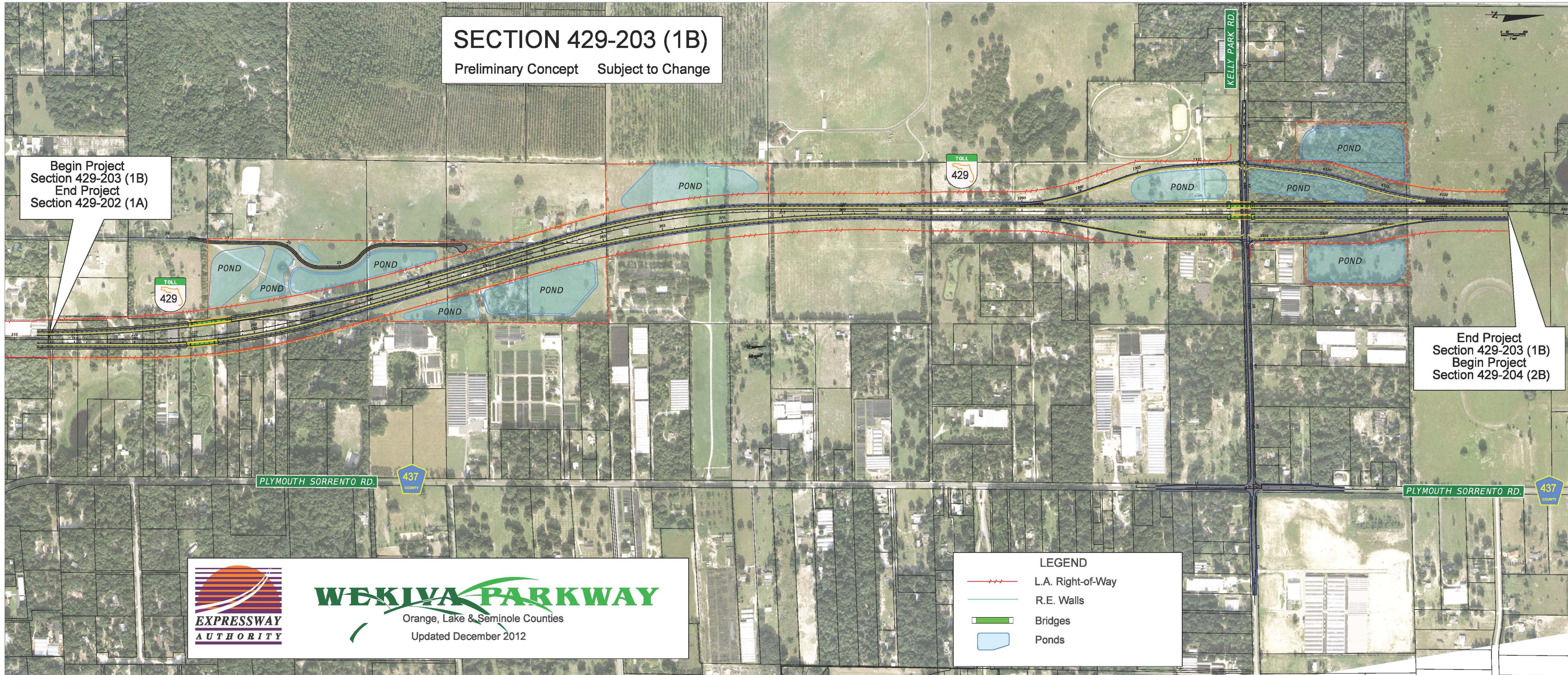
Section 1B

SECTION 429-203 (1B)

Preliminary Concept Subject to Change

Begin Project
Section 429-203 (1B)
End Project
Section 429-202 (1A)

End Project
Section 429-203 (1B)
Begin Project
Section 429-204 (2B)



Section 2A



WEKIYA PARKWAY
Orange, Lake & Seminole Counties
June 2012

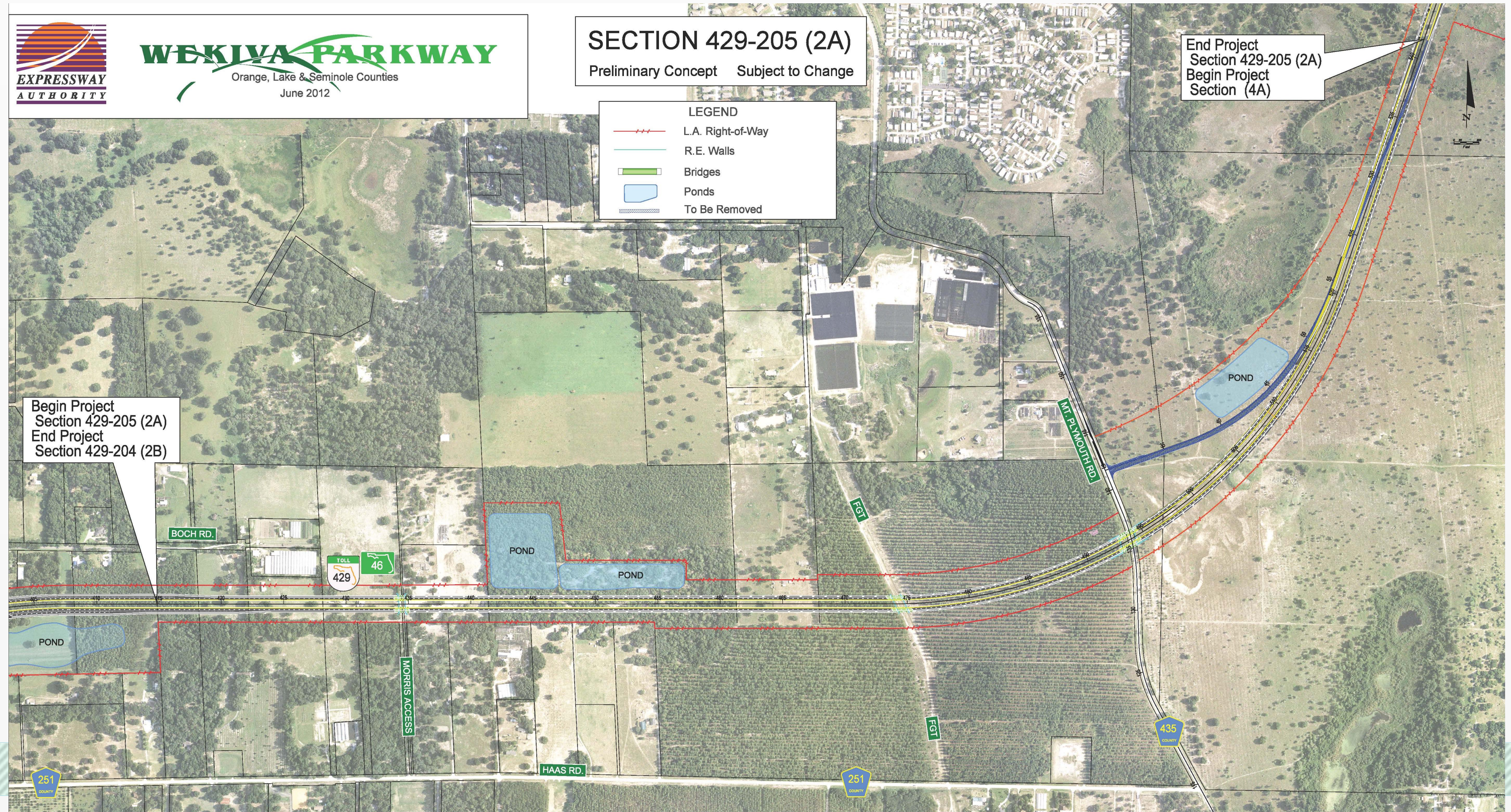
SECTION 429-205 (2A)
Preliminary Concept Subject to Change

LEGEND

- L.A. Right-of-Way
- R.E. Walls
- Bridges
- Ponds
- To Be Removed

End Project
Section 429-205 (2A)
Begin Project
Section (4A)

Begin Project
Section 429-205 (2A)
End Project
Section 429-204 (2B)



POND

POND

POND

BOCH RD.

MORRIS ACCESS

HAAS RD.

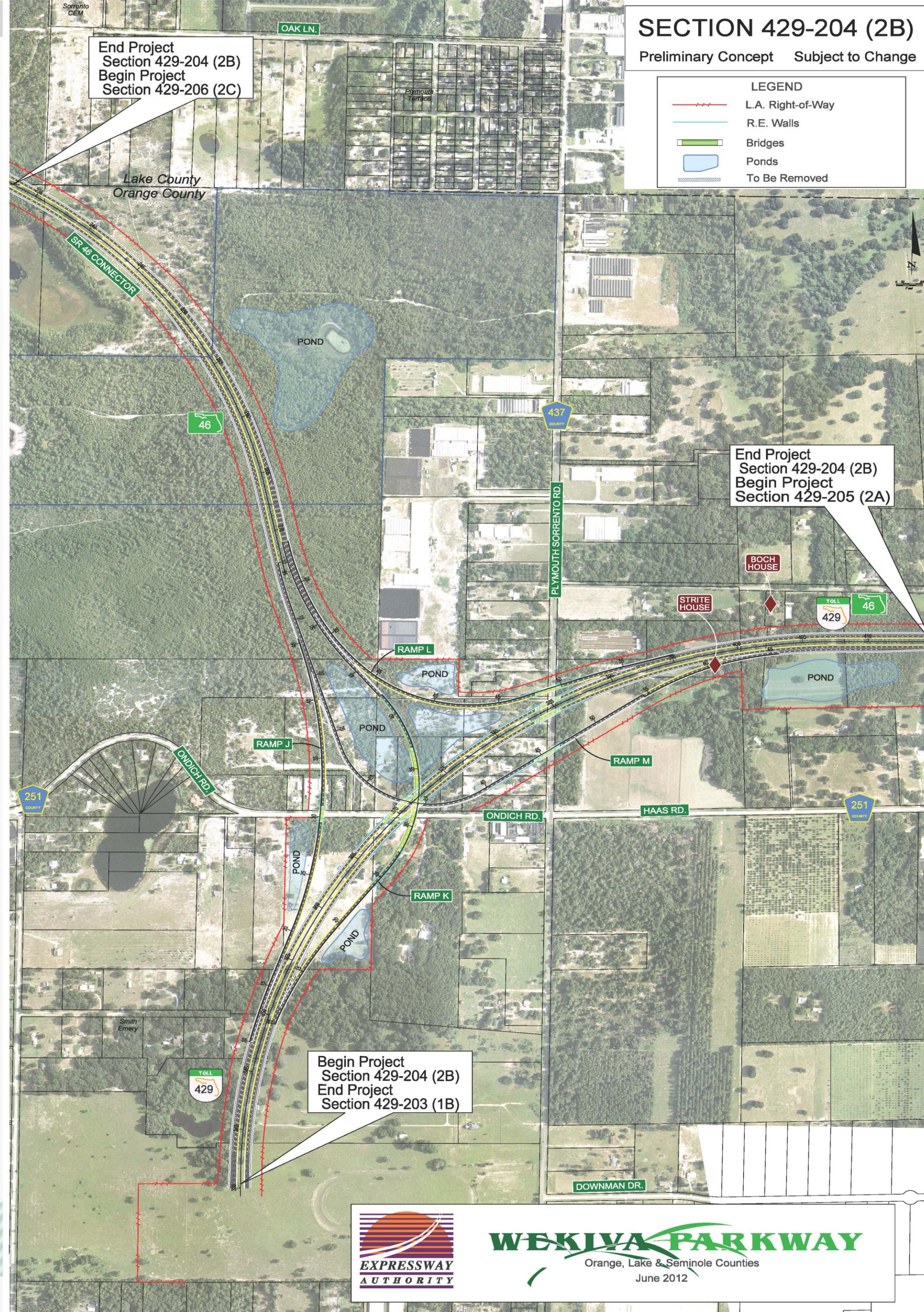
MT. PL. MOUTH RD.

FGT

FGT



Section 2B



SECTION 429-204 (2B)
 Preliminary Concept Subject to Change

LEGEND

- L.A. Right-of-Way
- R.E. Walls
- Bridges
- Ponds
- To Be Removed

End Project
 Section 429-204 (2B)
 Begin Project
 Section 429-206 (2C)

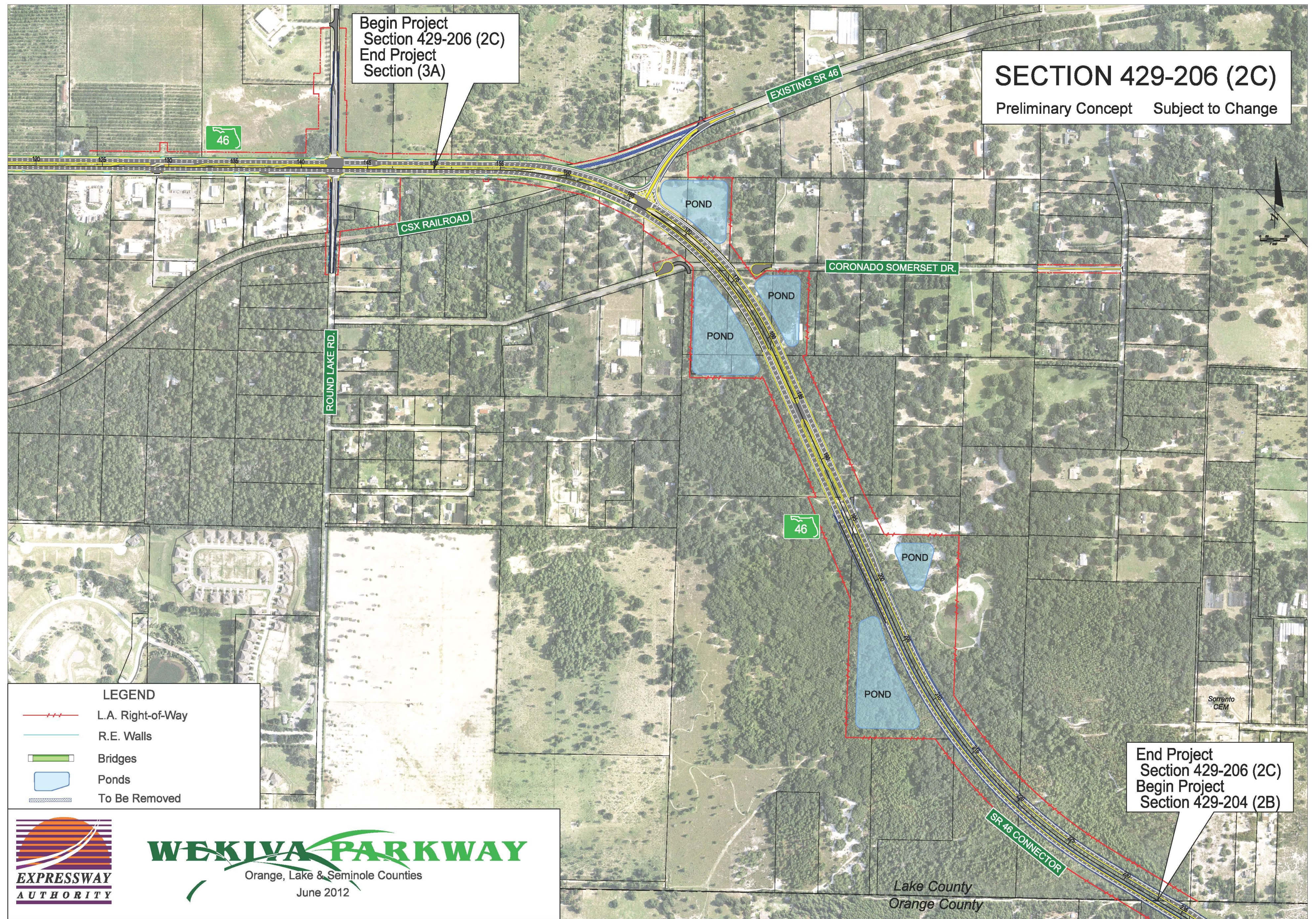
End Project
 Section 429-204 (2B)
 Begin Project
 Section 429-205 (2A)

Begin Project
 Section 429-204 (2B)
 End Project
 Section 429-203 (1B)



WEKIYA PARKWAY
 Orange, Lake & Seminole Counties
 June 2012

Section 2C



SECTION 429-206 (2C)
Preliminary Concept Subject to Change

Begin Project
Section 429-206 (2C)
End Project
Section (3A)

End Project
Section 429-206 (2C)
Begin Project
Section 429-204 (2B)

- LEGEND**
- L.A. Right-of-Way
 - R.E. Walls
 - Bridges
 - Ponds
 - To Be Removed



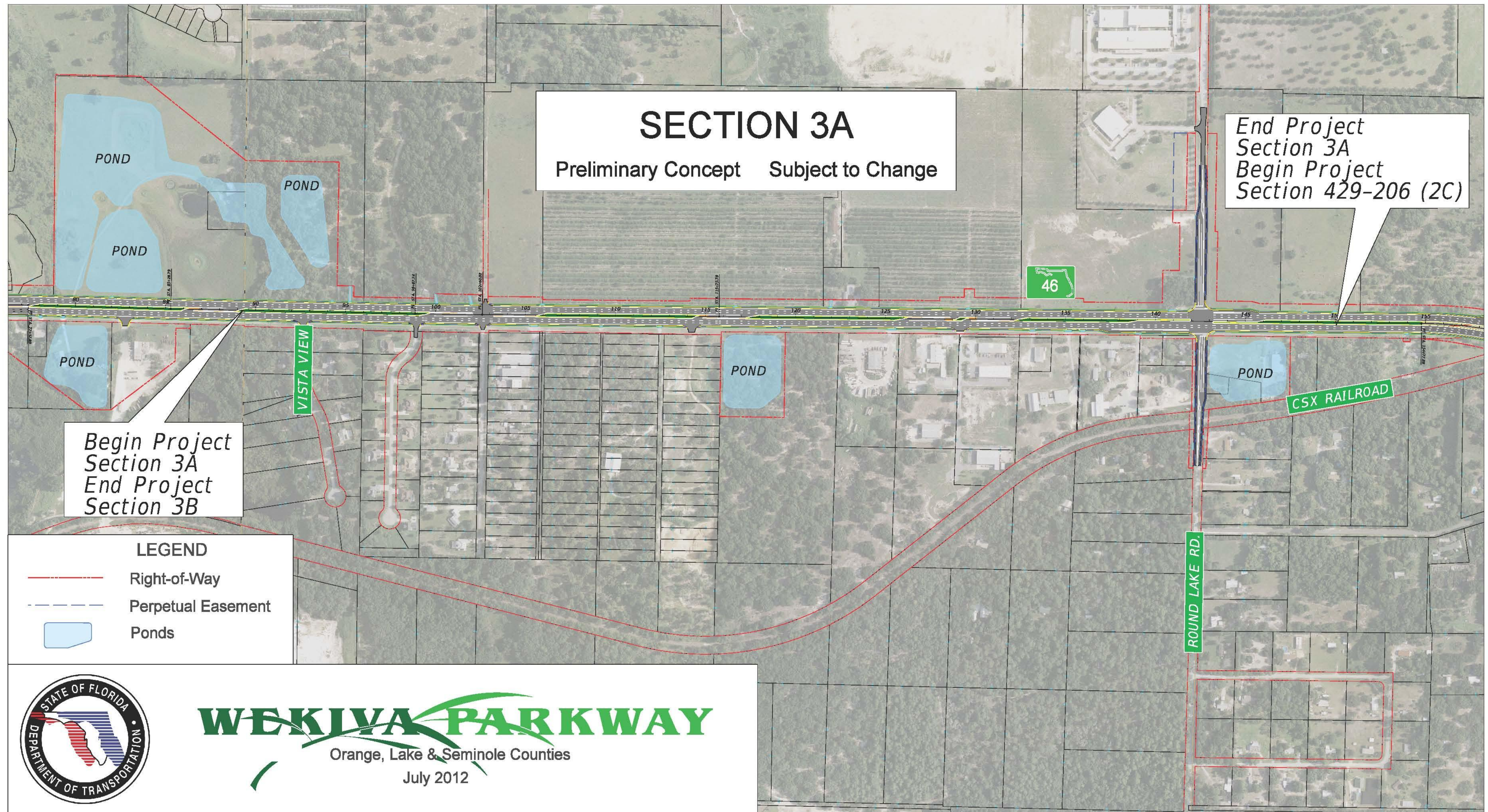
WEKIIVA PARKWAY
Orange, Lake & Seminole Counties
June 2012

Lake County
Orange County

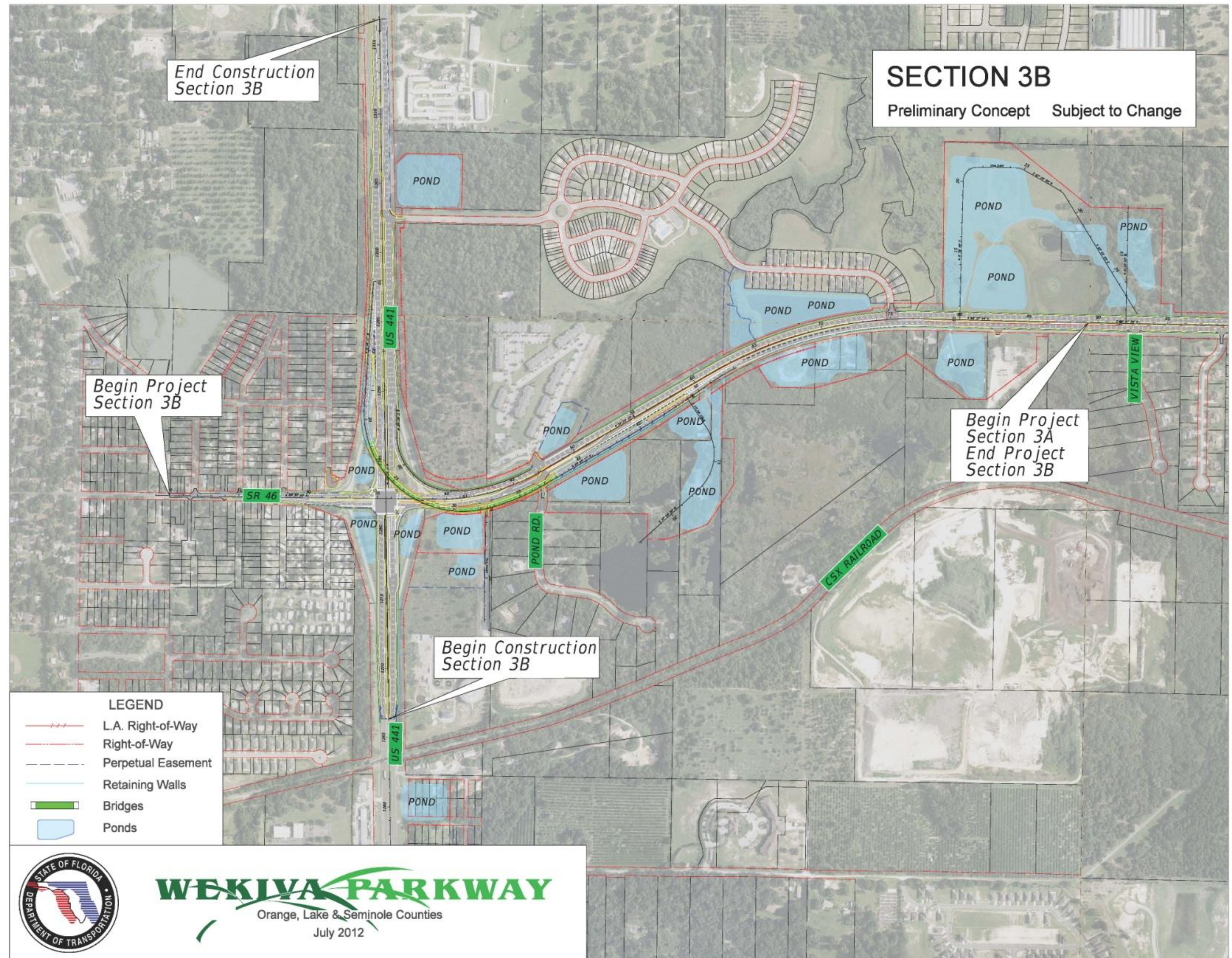
FDOT Sections



Section 3A



Section 3B



Section 4A & 4B

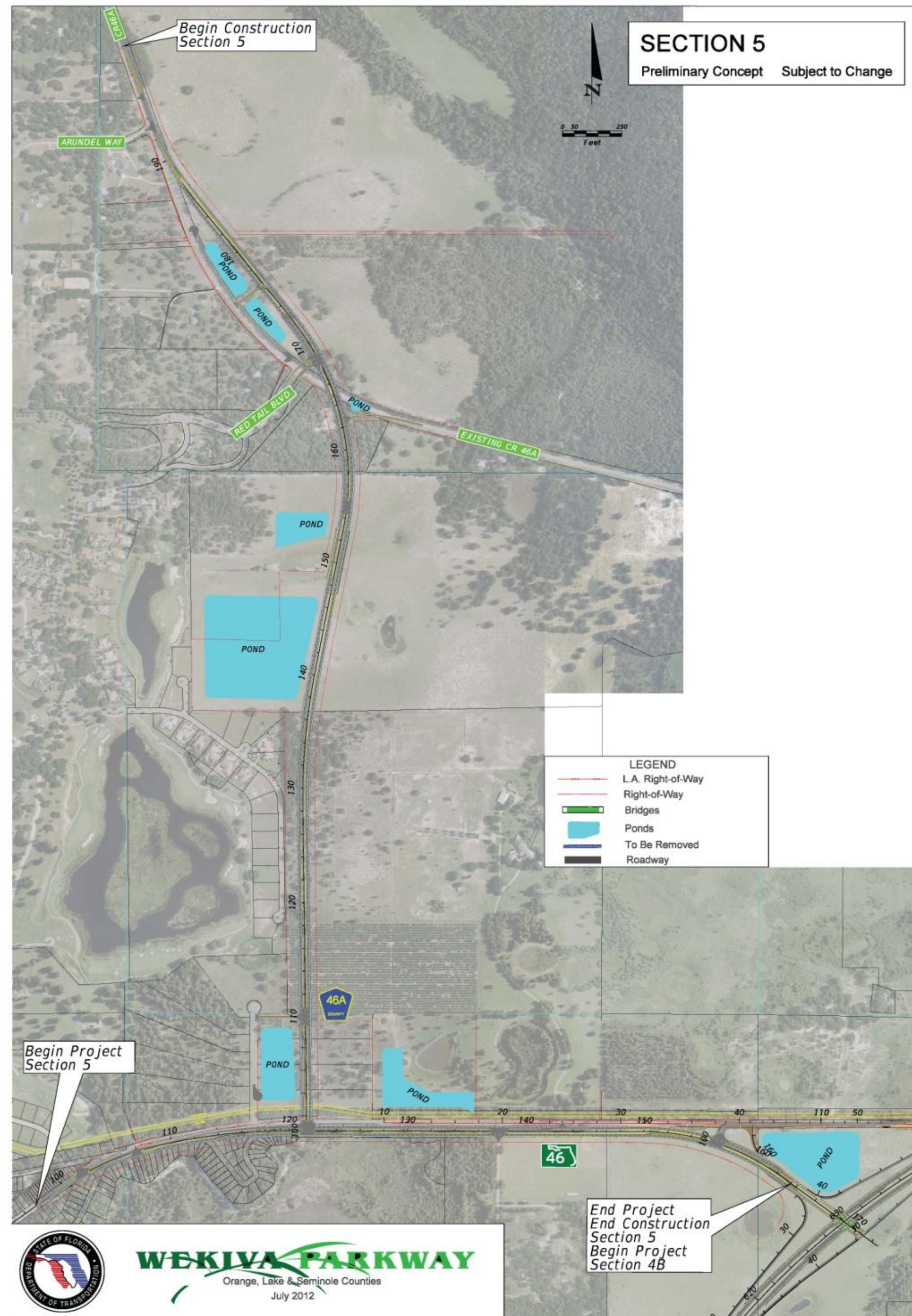


Section 4A & 4B – Gopher Tortoise Relocation

- FFWCC Permit
- 89 Tortoises Recovered (Jan. 30, 2013)
- 222 Burrows Cleared
- 38 Burrows Remaining
- All Burrowing Owls Relocated



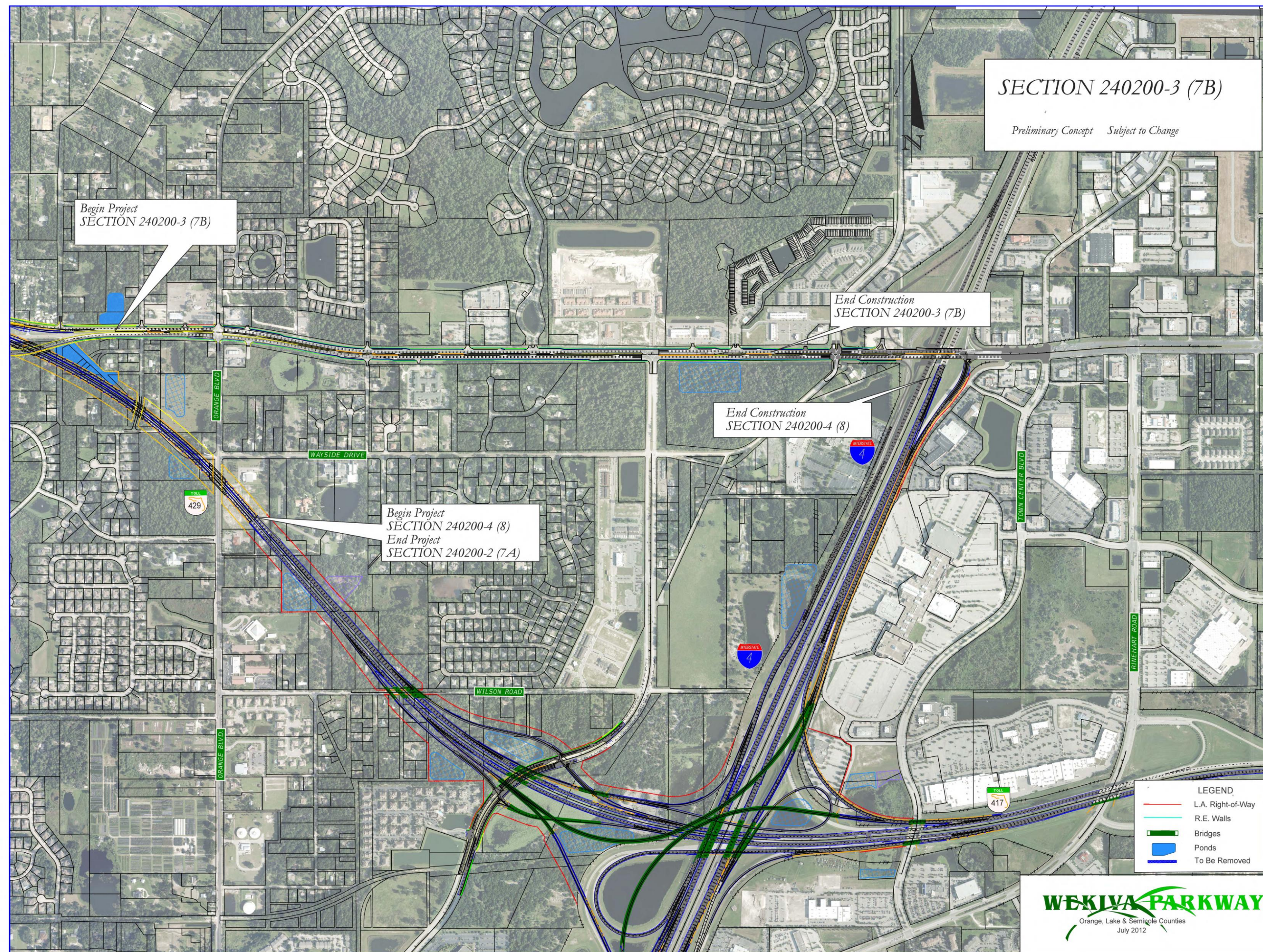
Section 5



Section 7A



Sections 7B & 8



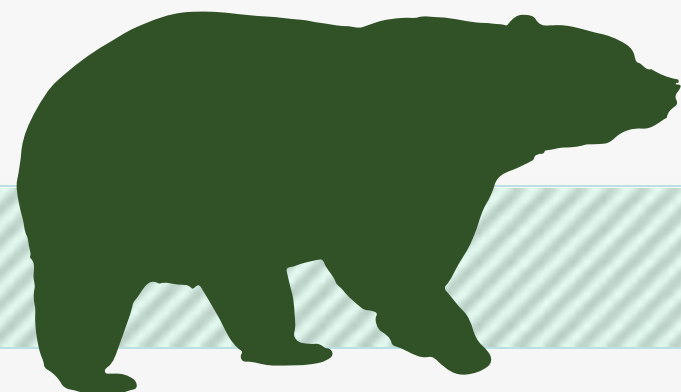
Project Status

Final Design

- OOCEA Sections 1A, 1B – 60% complete plans Feb. 2013
- OOCEA Section 2A – 30% complete plans Feb. 2013
- OOCEA Section 2B – 30% complete plans March 2013
- OOCEA Section 2C – Began Jan. 2013
- FDOT Section 3A – Design begins May-June 2013
- FDOT Section 3B – Design to reach 30% plans Apr.-May 2013
- FDOT Section 5 – Design starts Feb. 2013
- FDOT Section 6 – Design starts March-Apr. 2013
- FDOT Section 7A – Design starts June-July 2013

Construction

- FDOT Section 4A & 4B – Clearing & grubbing starts Feb. 2013
- **Wekiva Parkway Complete - Fall 2021**



What's Next?

- **Final Design Underway**
- **Continued design concept evaluation & community coordination**
- **Opportunities for Community Input**
 - ✓ **Section 1 Public Meeting:** March 21, 2013 6 p.m.- 8 p.m.
- Apopka High School Cafeteria
 - ✓ Community Presentations
 - ✓ Updates & Comments via Website: www.wekivaparkway.com



For More Information:

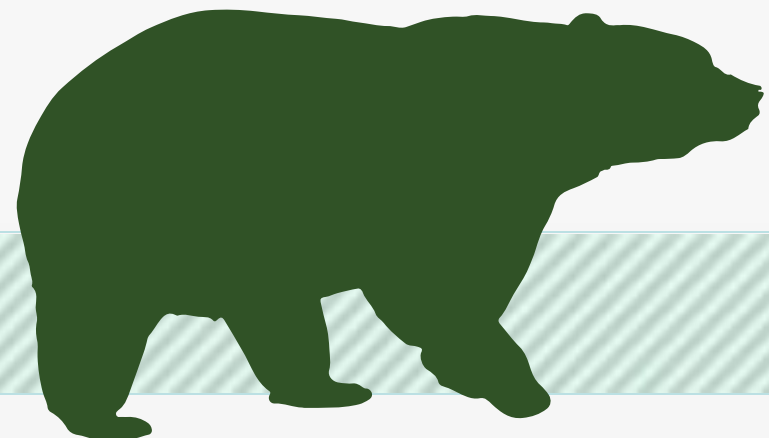
Mary Brooks

Public Involvement Coordinator

C: 407-694-5505

E: Info@wekivaparkway.com

W: www.wekivaparkway.com



The screenshot shows the homepage of the Wekiva Parkway website. At the top, the logo reads "WEKIVA PARKWAY" with the tagline "Completing Central Florida's Beltway" and a "TOLL 429" icon. A navigation menu includes "HOME", "FDOT PROJECTS", "OOCEA PROJECTS", "PROJECTS BY COUNTY", "PROJECT HISTORY", and "CONTACT US".

The main content area features a "WELCOME" section with a message from the Florida Department of Transportation and the Orlando-Orange County Expressway Authority. It describes the project as a cooperative effort and lists key features: building seven miles of four- and six-laning of SR 46, rebuilding the US 441/SR 46 interchange, and relocating the CR 46A connection. A "WEKIVA PARKWAY PROJECT SECTION MAP" is displayed, showing various project sections (1A through 8) and design-build areas. A legend indicates that green boxes represent "FOOT/TPK SECTION *Indicates Design Build" and purple boxes represent "OOCEA SECTION".

On the right side, there is a "LATEST NEWS" section with several news items dated from May 2012 to October 2012, including announcements about design firm selections and groundbreakings. Below this is a "PROJECT DOCUMENTS" section with links for presentations, press releases, and public meeting notices. A small photo of a wetland area is shown under the "Public Meeting Notices" link. At the bottom right, a "CONTACT US" section lists "Mary Brooks" as the contact person.

twitter

facebook

WEKIWA PARKWAY

Completing Central Florida's Beltway



Thank You!
Questions?

