



A Regional Transportation Solution

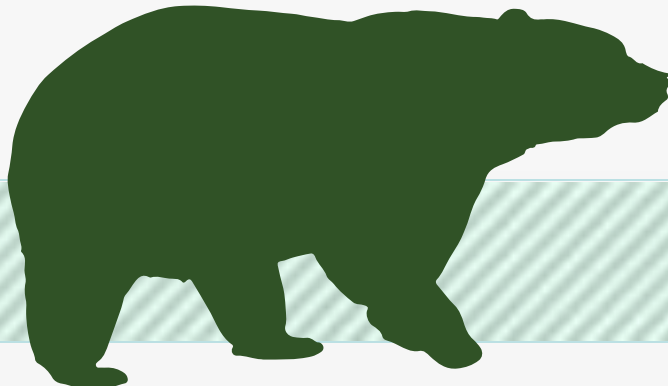
Rotary Club of Apopka
Jan. 30, 2014



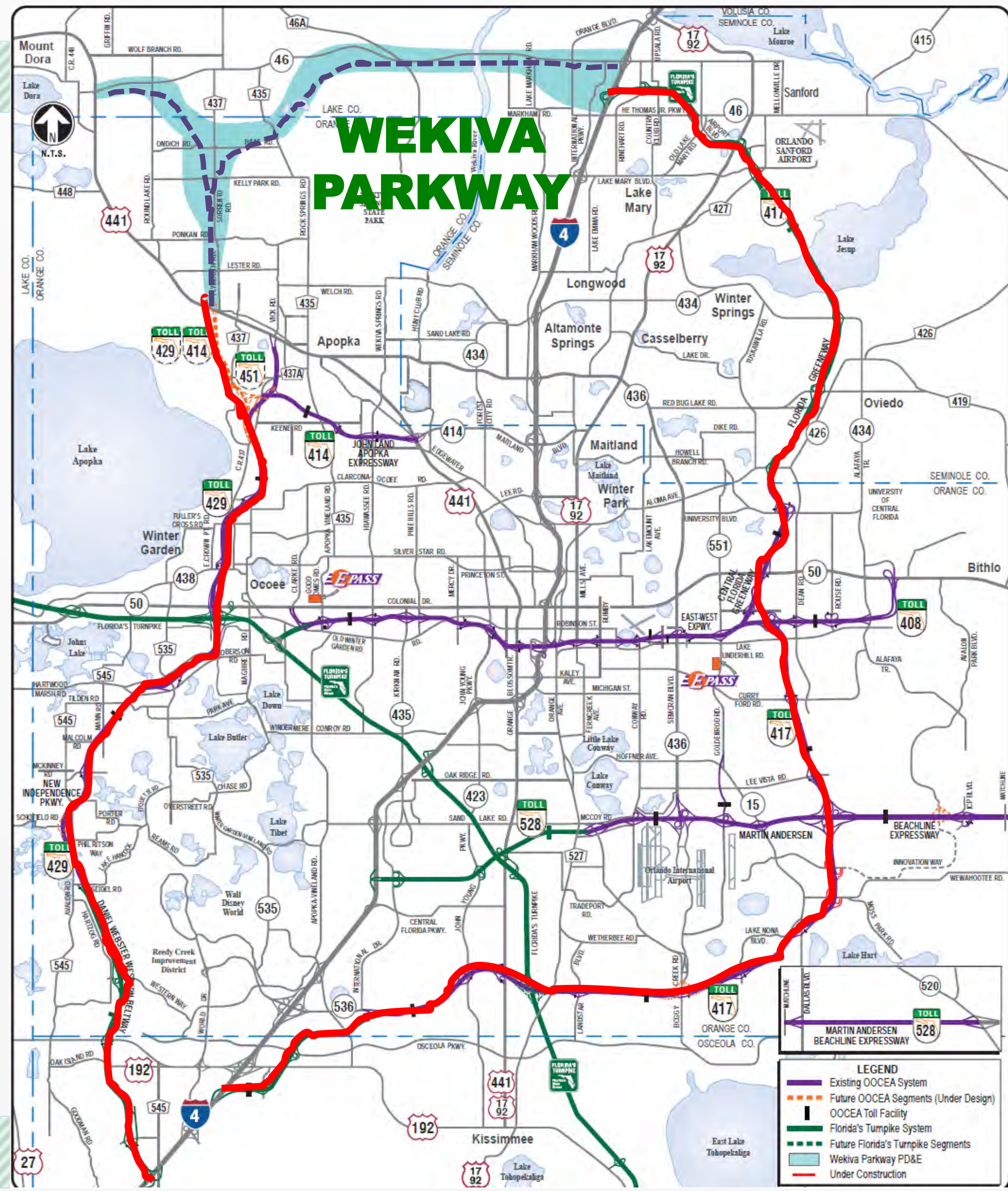
CENTRAL FLORIDA LEGACY PROJECTS



Funding Partners



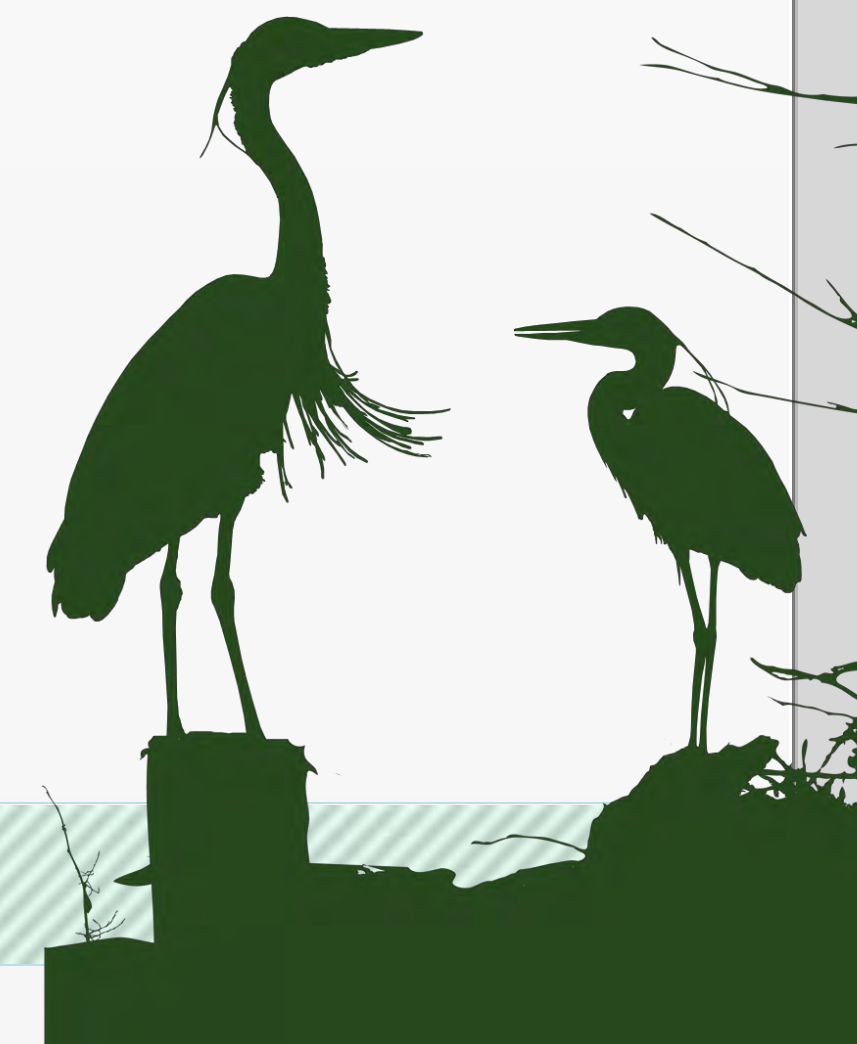
WEKIVA PARKWAY



WEKIVA PARKWAY

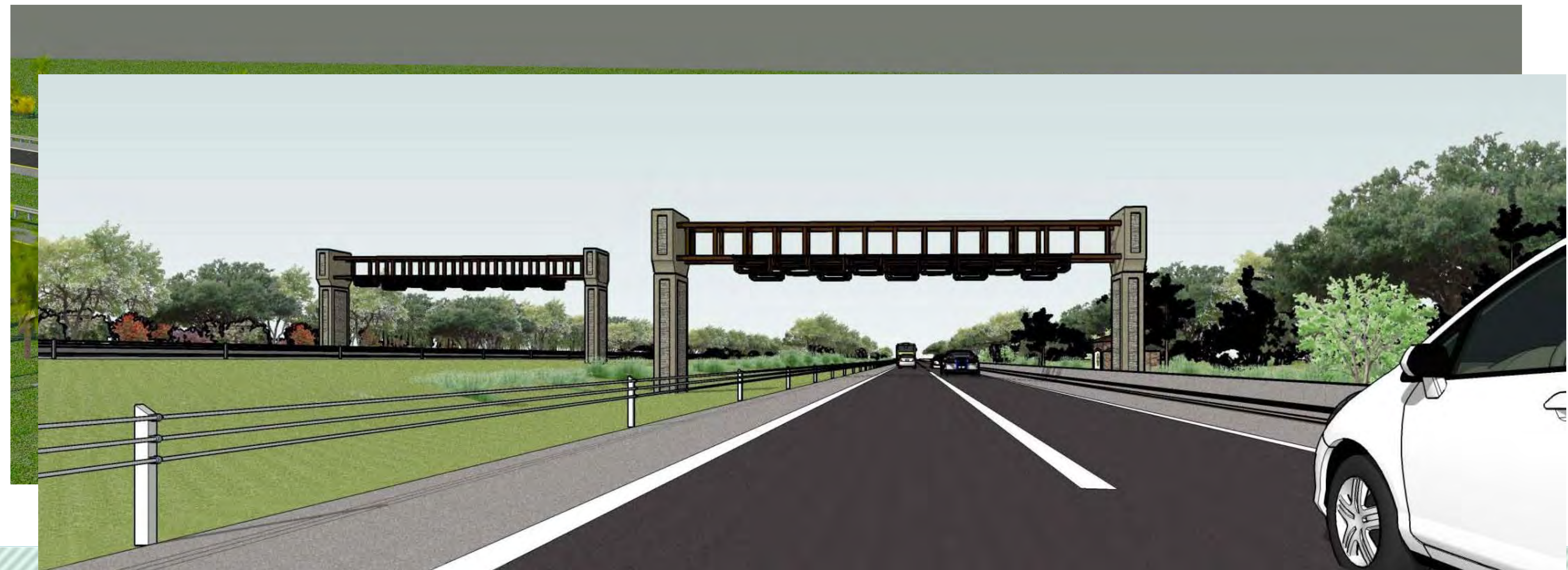
Project Description

- **\$1.6 Billion Completion of Central Florida's Beltway**
- **25-mile Toll Road**
- **Non-Toll Road Improvements:**
 - **Widening SR 46 in Lake & Seminole Counties**
 - **Rebuilding the US 441/SR 46 Interchange in Mount Dora**
 - **Relocating CR 46A to Improve Wildlife Connectivity**
 - **Parallel Service Roads in East Lake & Seminole Counties**
- **Multi-use Trail (Portions of East Lake & Seminole Counties)**



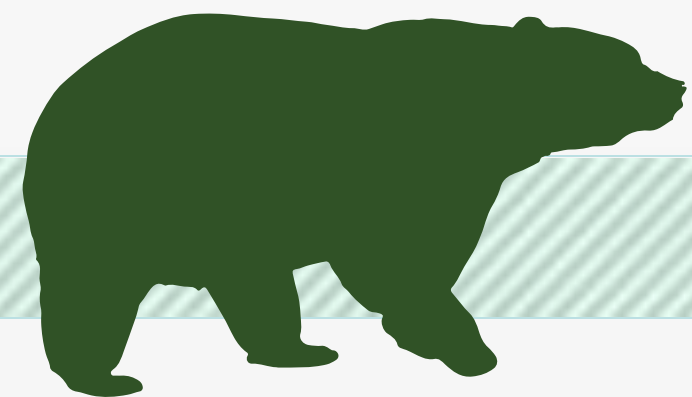
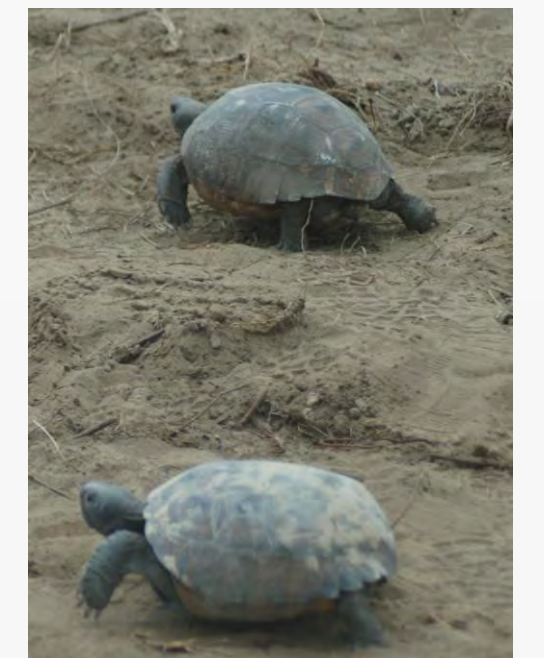
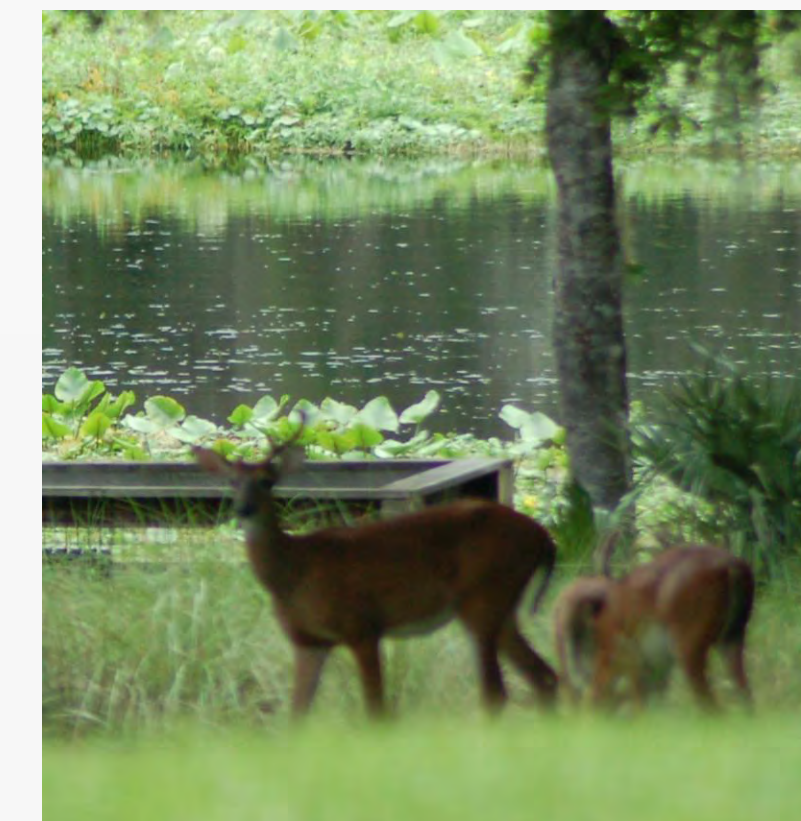
All Electronic Tolling (AET)

- **First in Central Florida**
- **No Toll Plazas (SUNPass or E-Pass)**
- **Improved Traffic Flow Efficiency**
- **Enhanced Safety**
- **Reduced Noise**
- **Toll Costs Pending**



Protecting Nature

- **Wekiva River: Outstanding Florida Water & National Wild & Scenic River**
- **Authorized by the 2004 Wekiva Parkway and Protection Act**
 - **Setting Aside More than 3,400 Acres for Conservation**
 - **Largely Elevated to Reduce Accidents Between Vehicles & Wildlife**
 - **Several Wildlife Bridges**
 - **Few Interchanges (Reduce Development)**



PROJECT ECONOMIC IMPACT

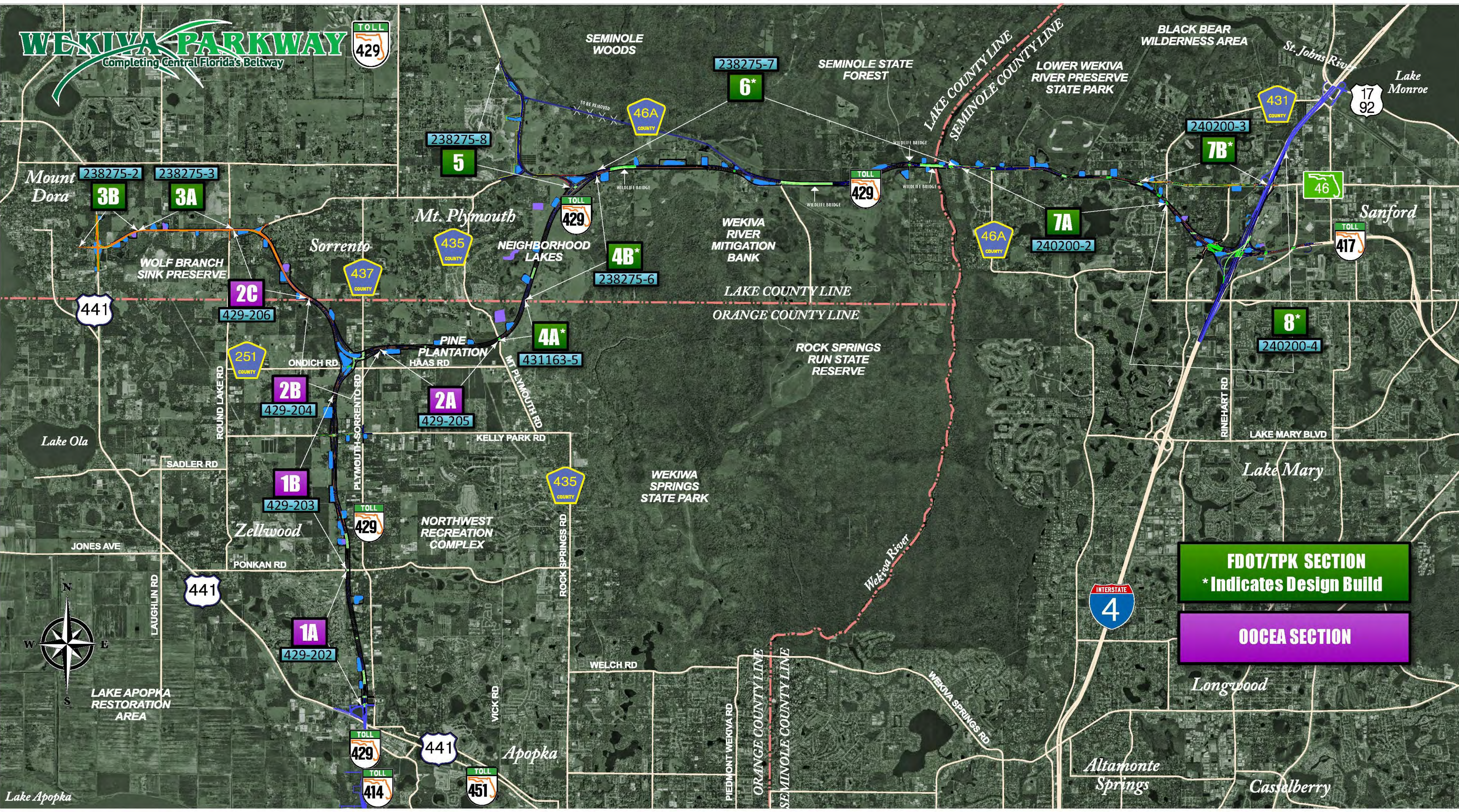
At an estimated cost of \$1.6 Billion for Engineering & Construction, the Wekiva Parkway is Projected to Provide:

Construction Related Jobs	12,272
Supporting Industries Jobs	5,570
Induced Employment Jobs	17,983

***Estimated Total Jobs 35,825**

WEKIWA PARKWAY

Completing Central Florida's Beltway



FDOT/TPK SECTION
* Indicates Design Build

OOCEA SECTION

Design Status

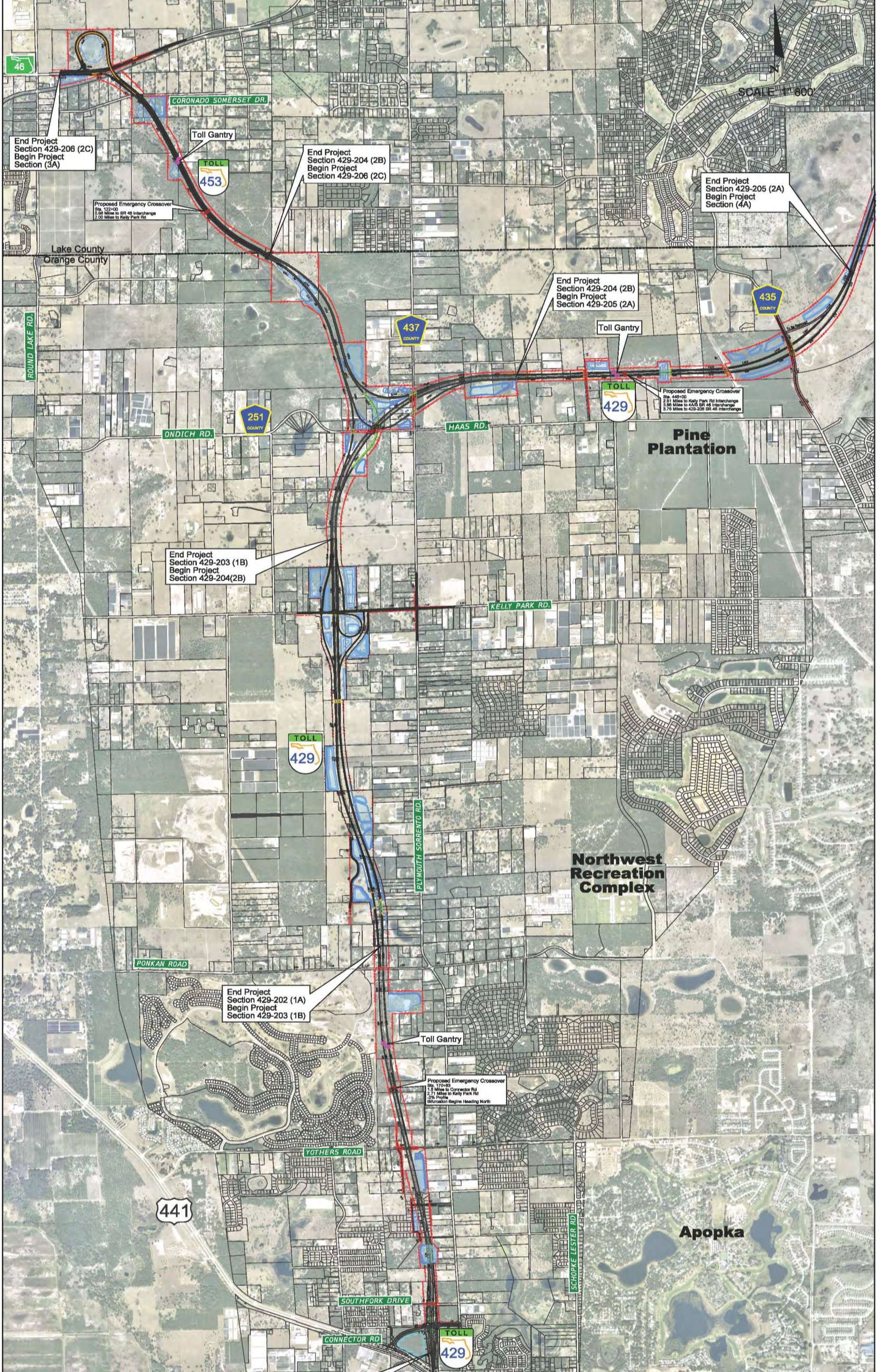
SECTION	MILESTONE	SUBMITTAL SCHEDULE
1A & 1B	100%	Spring 2014
2A	90%	March 2014
2B	90%	Feb. 2014
2C	60%	March 2014
3A	30%	Dec. 2013
3B	60%	Dec. 2013
5	60%	March 2014
6	30%	Feb.- March 2014
7A	30%	March 2014
7B & 8	Design-Build	



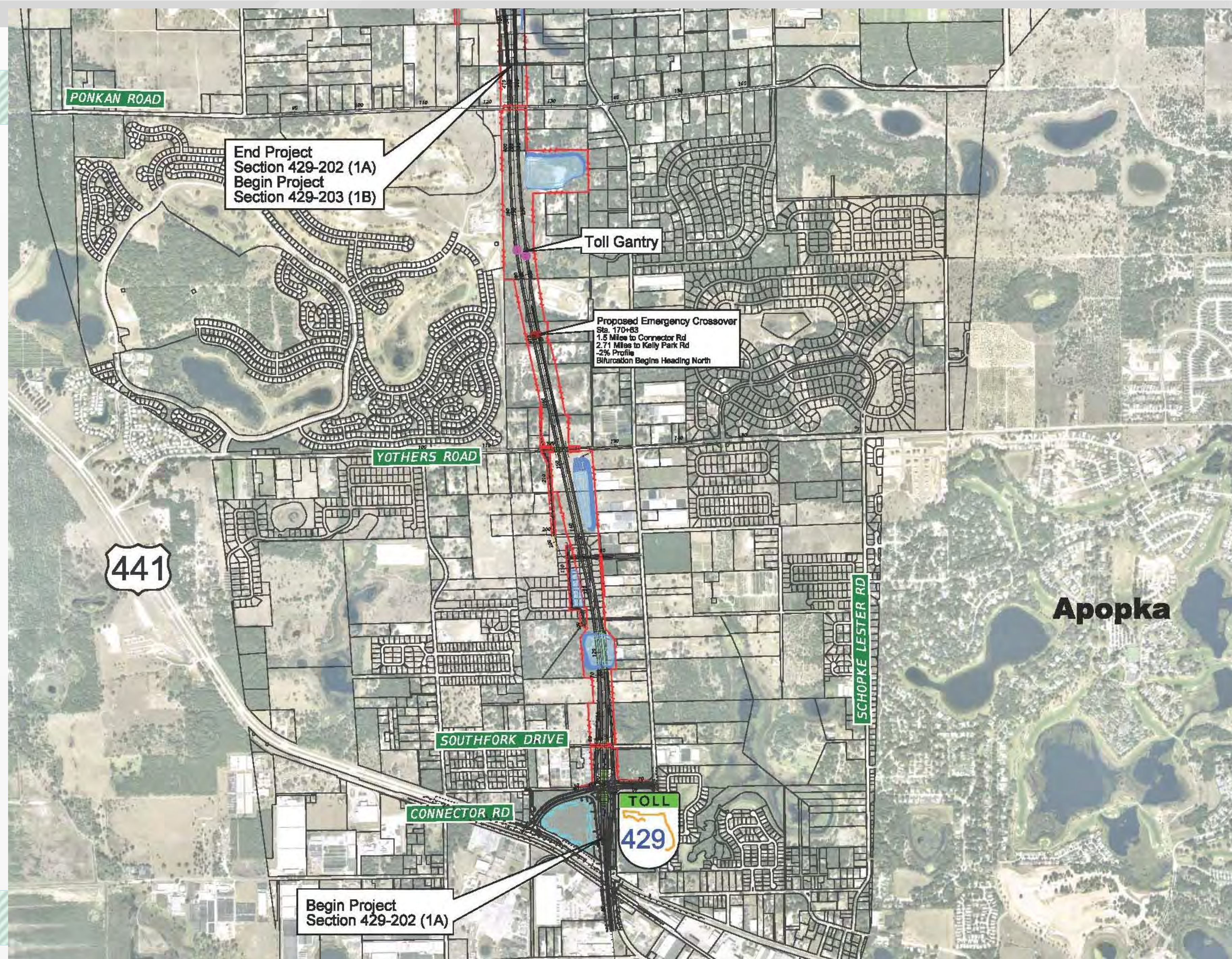
Expressway Authority Sections



OOCEA Projects



OOCEA Section 1A (429-202)



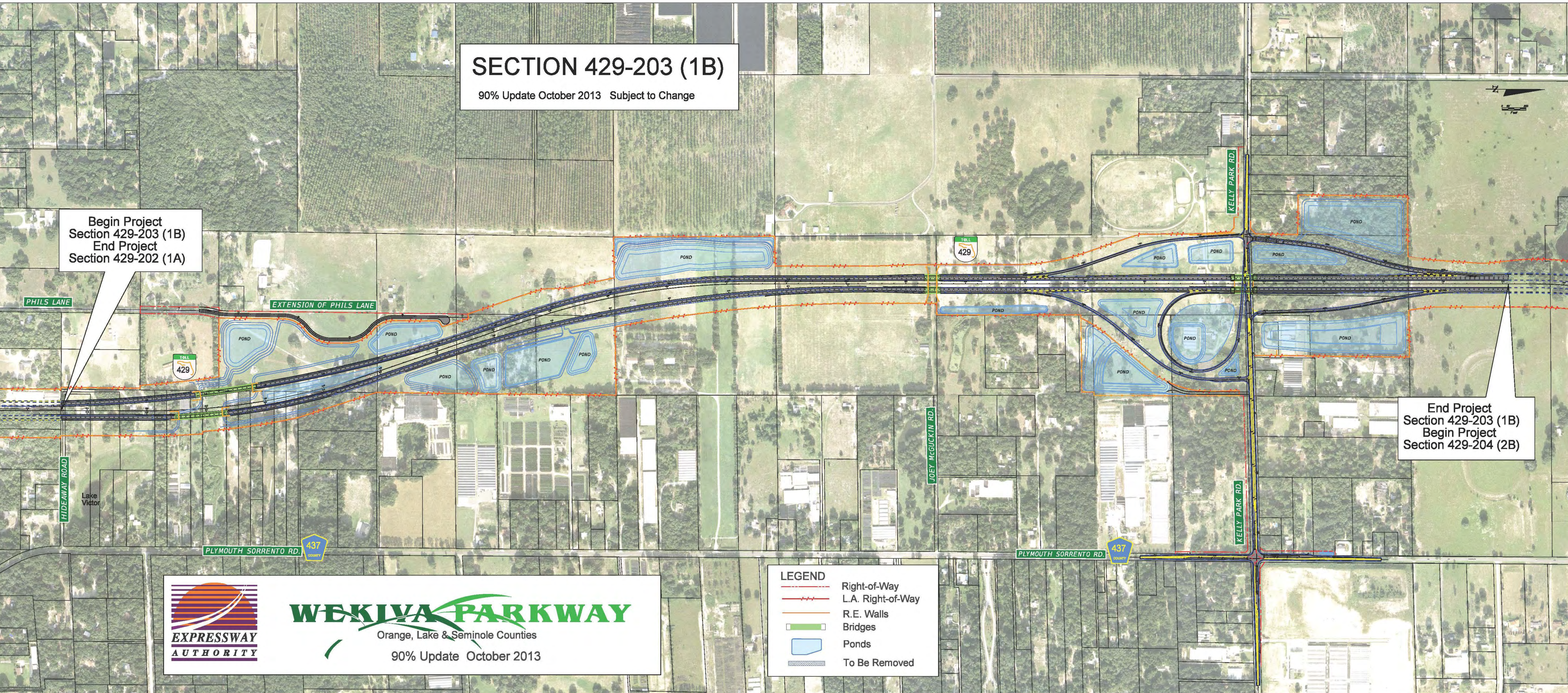
Section 1B

SECTION 429-203 (1B)

90% Update October 2013 Subject to Change

Begin Project
Section 429-203 (1B)
End Project
Section 429-202 (1A)

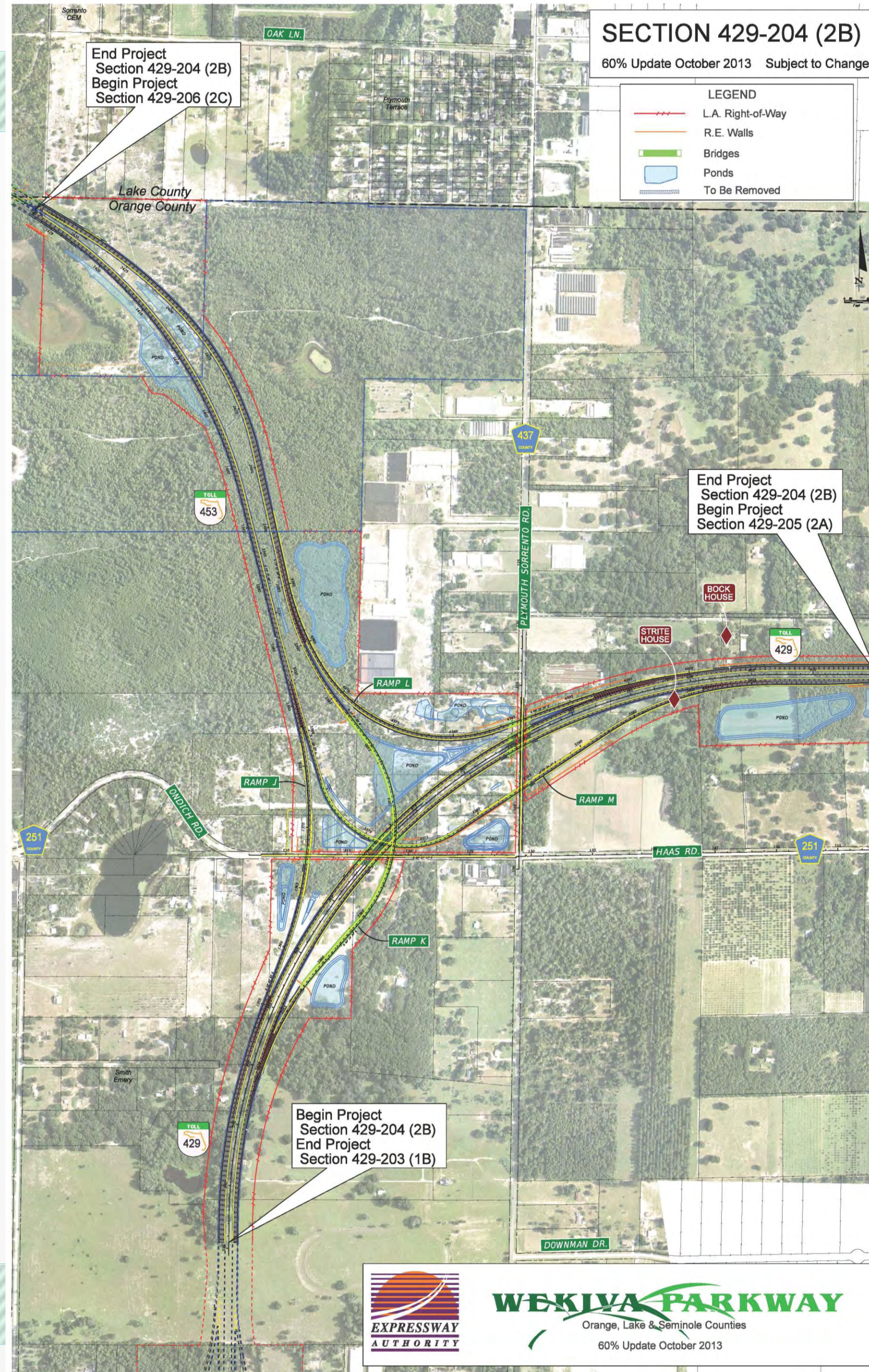
End Project
Section 429-203 (1B)
Begin Project
Section 429-204 (2B)



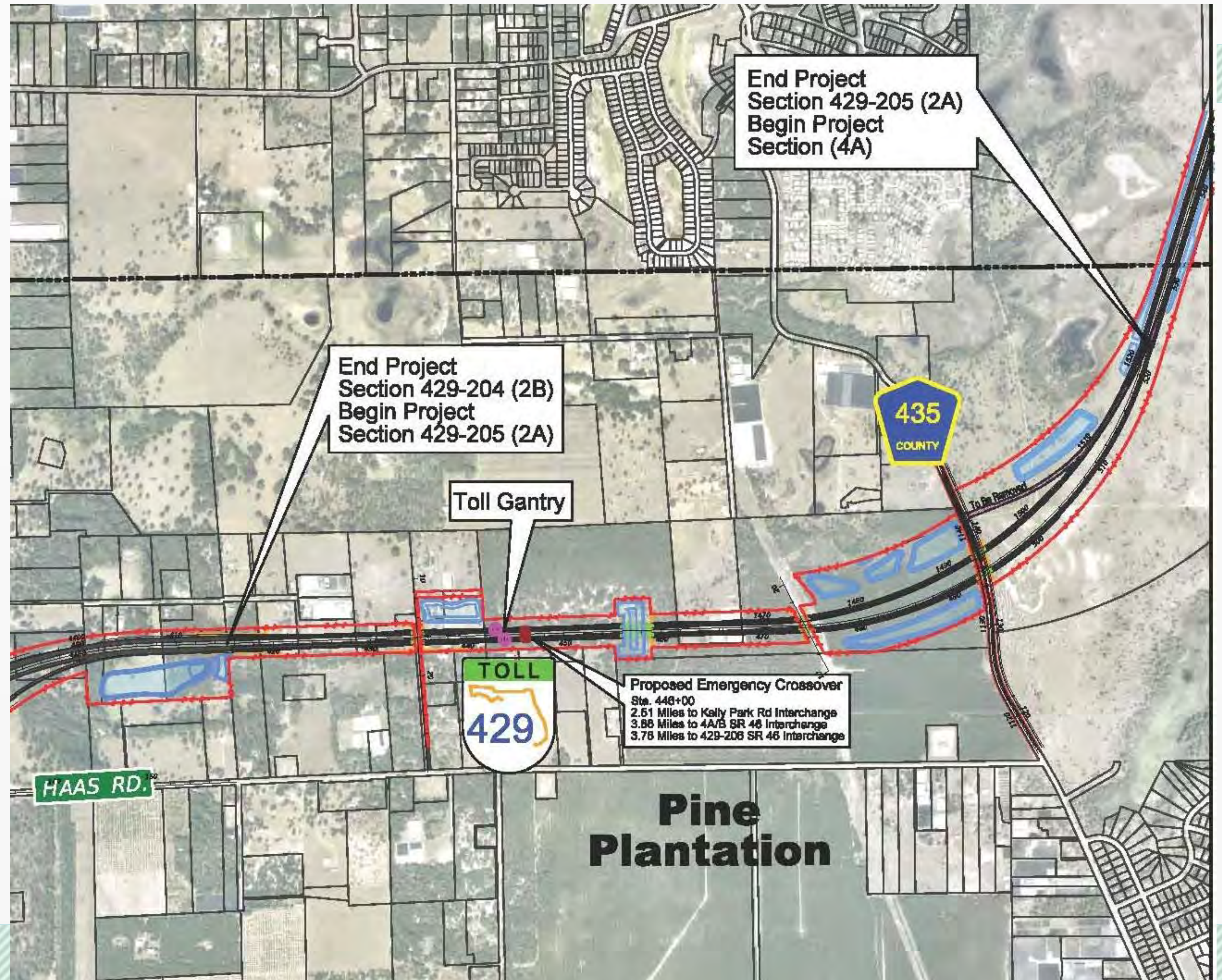
WEKIIVA PARKWAY
Orange, Lake & Seminole Counties
90% Update October 2013

LEGEND	
	Right-of-Way
	L.A. Right-of-Way
	R.E. Walls
	Bridges
	Ponds
	To Be Removed

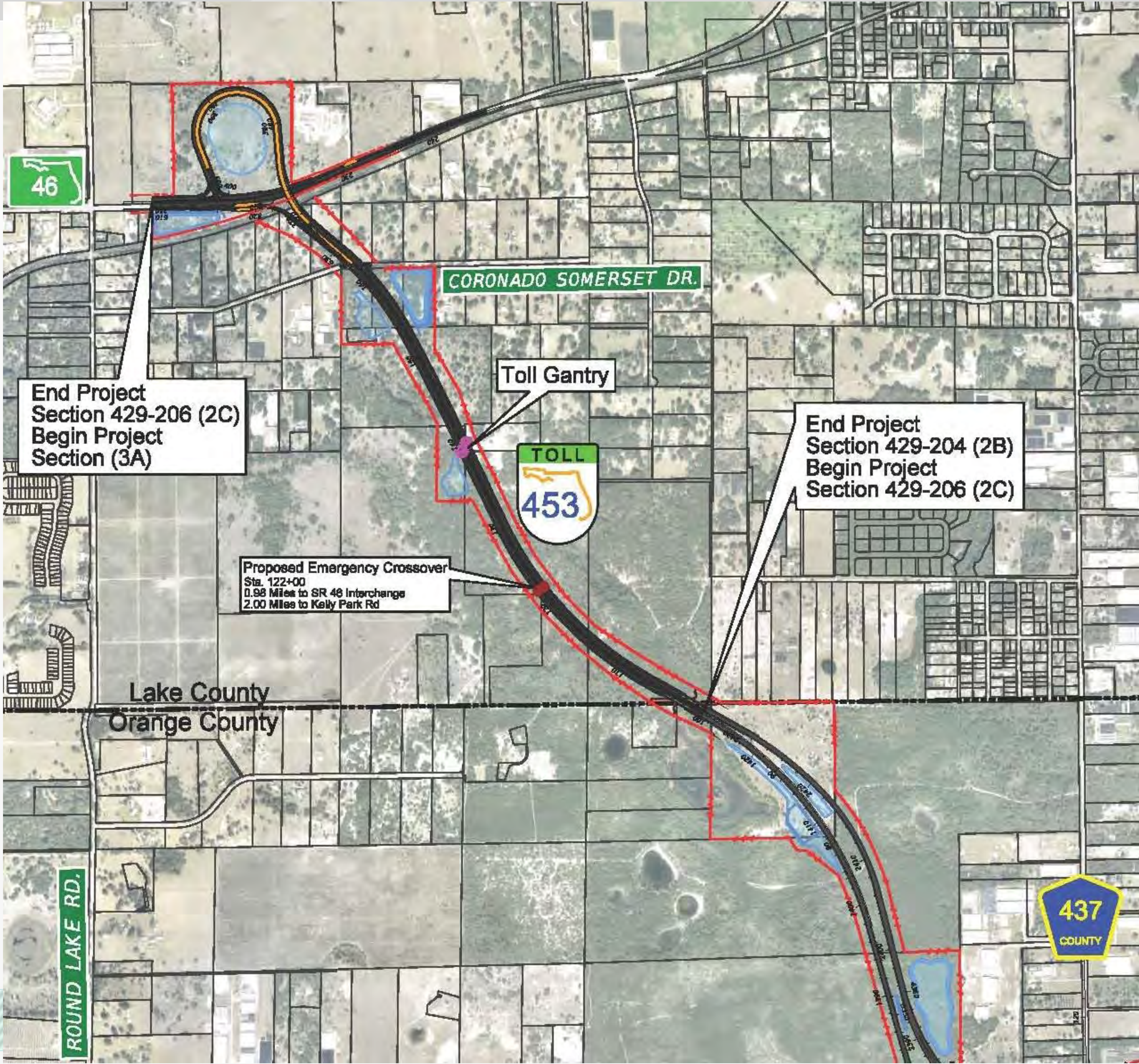
Section 2B



Section 2A



Section 2C



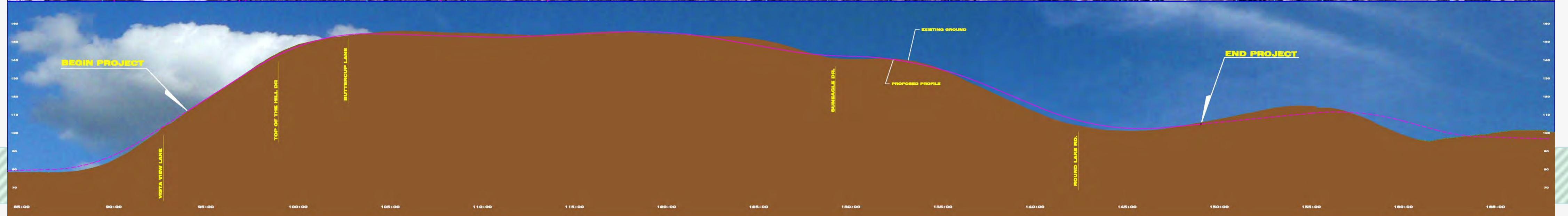
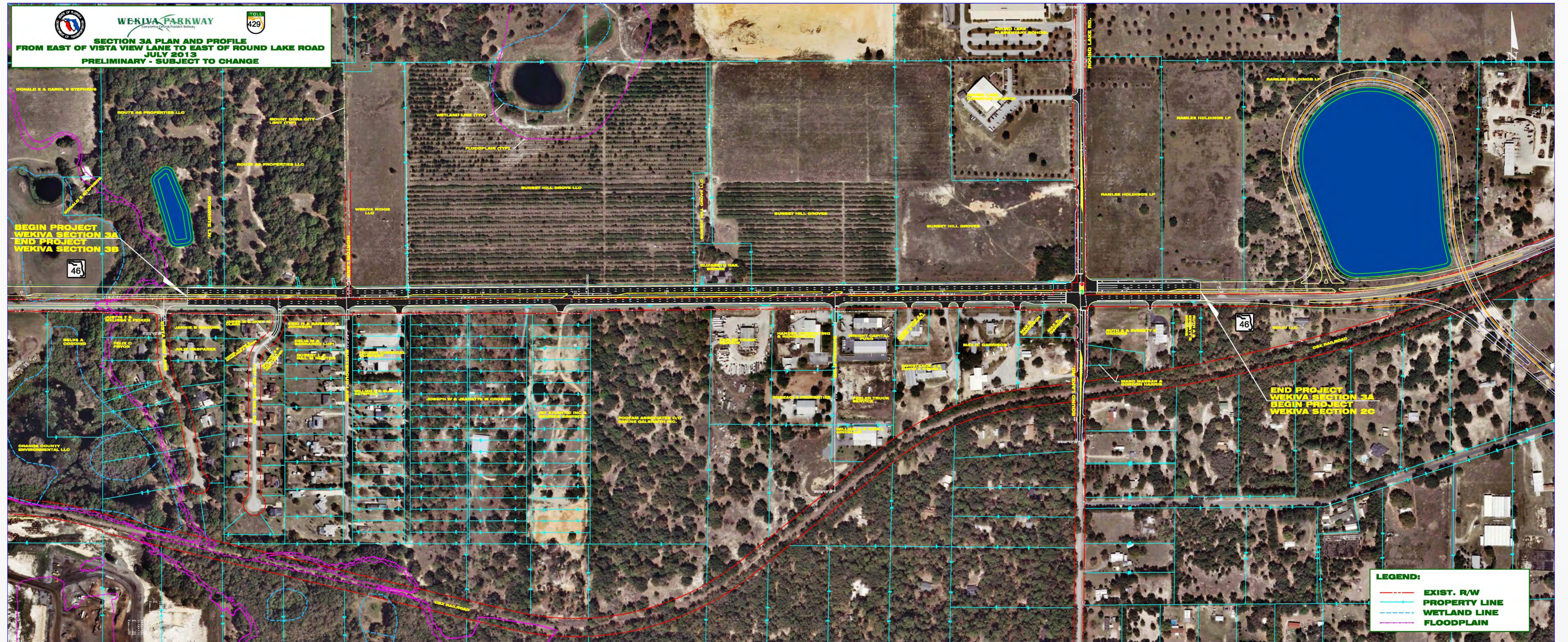
Section 2 – Public Meeting Nov. 7, 2013



FDOT Sections



Section 3A



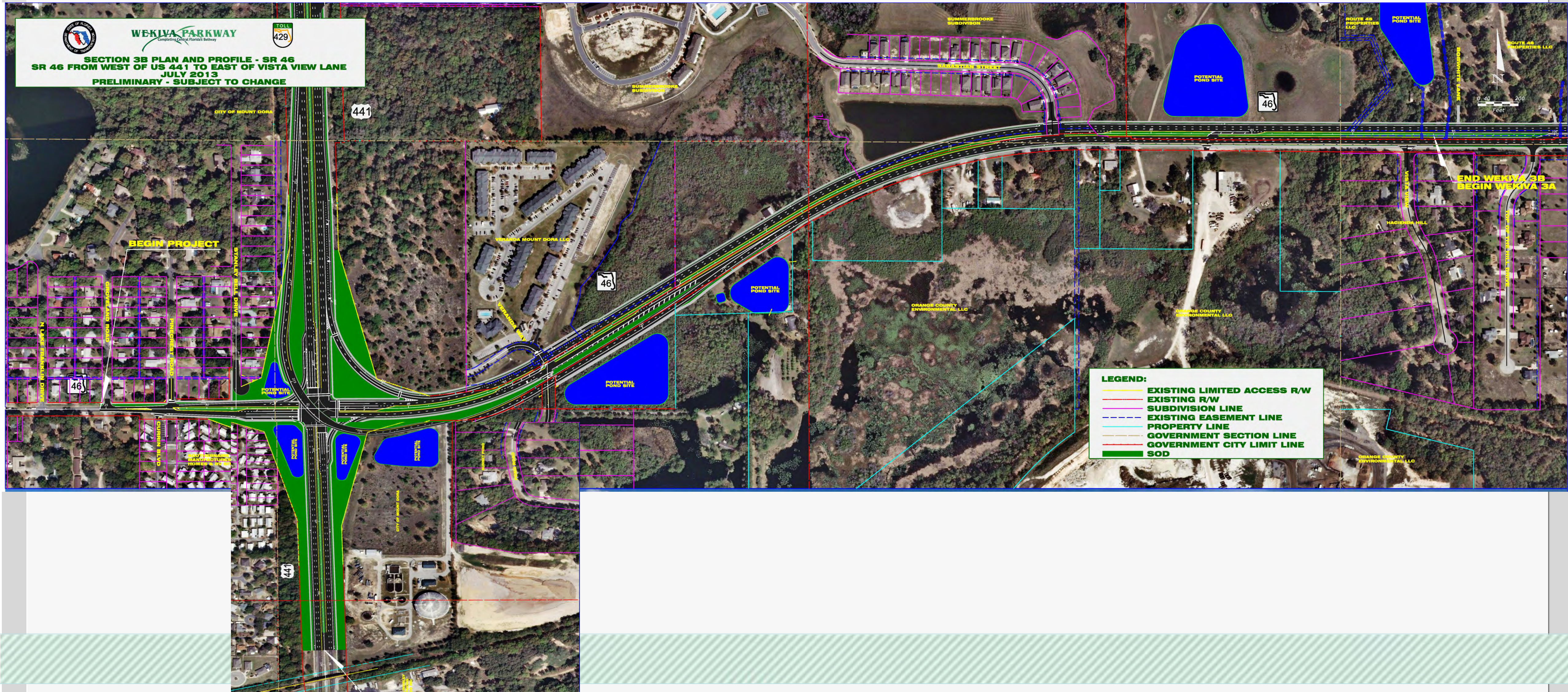
Section 3B



WEKIVA PARKWAY
Completing Central Florida's Beltway



SECTION 3B PLAN AND PROFILE - SR 46
SR 46 FROM WEST OF US 441 TO EAST OF VISTA VIEW LANE
JULY 2013
PRELIMINARY - SUBJECT TO CHANGE



LEGEND:

- EXISTING LIMITED ACCESS R/W
- EXISTING R/W
- SUBDIVISION LINE
- EXISTING EASEMENT LINE
- PROPERTY LINE
- GOVERNMENT SECTION LINE
- GOVERNMENT CITY LIMIT LINE
- ███ SOD



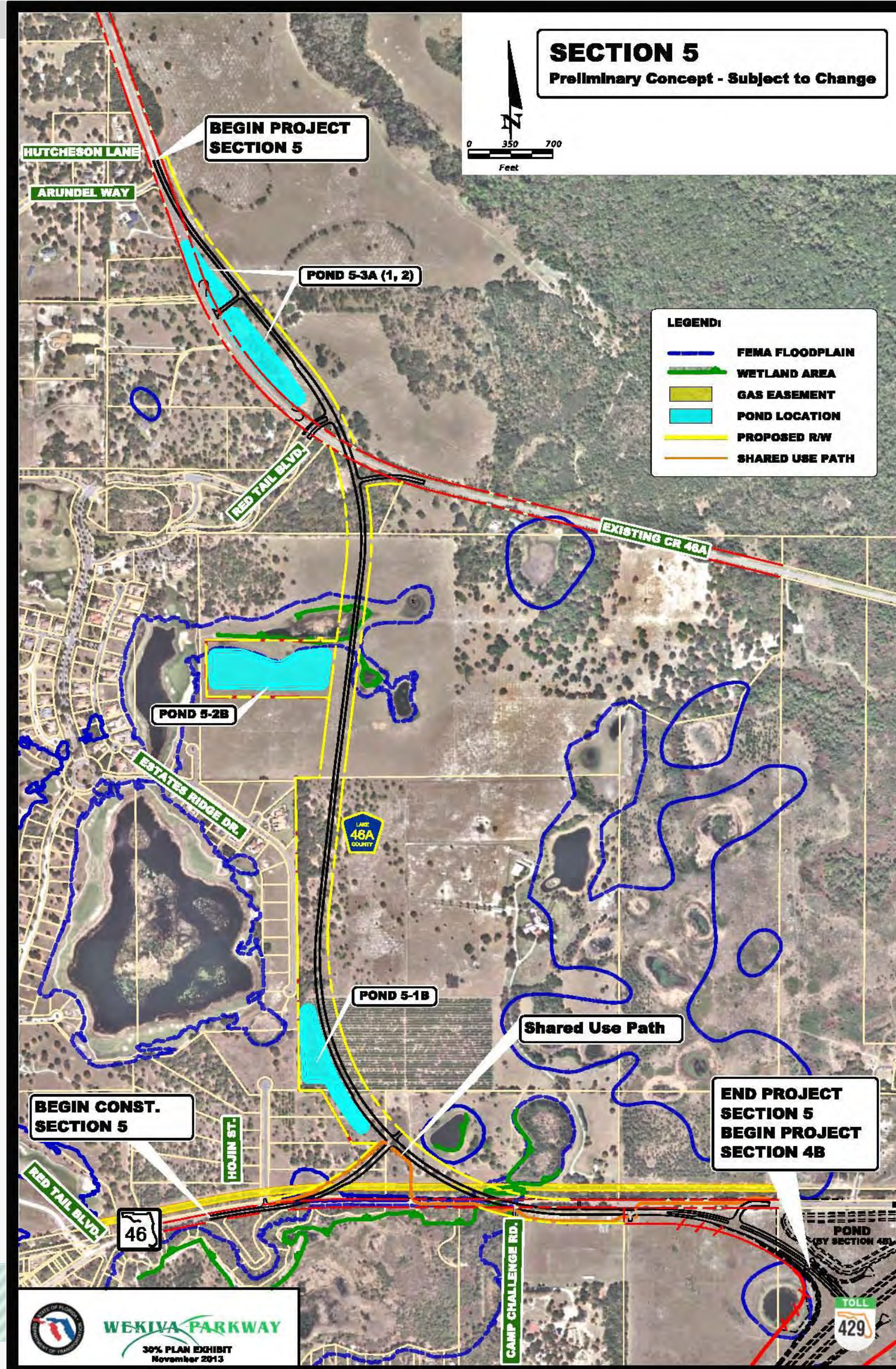
Section 4A & 4B



Section 4A & 4B



Section 5



Section 6

SECTION 238275-7 (6)

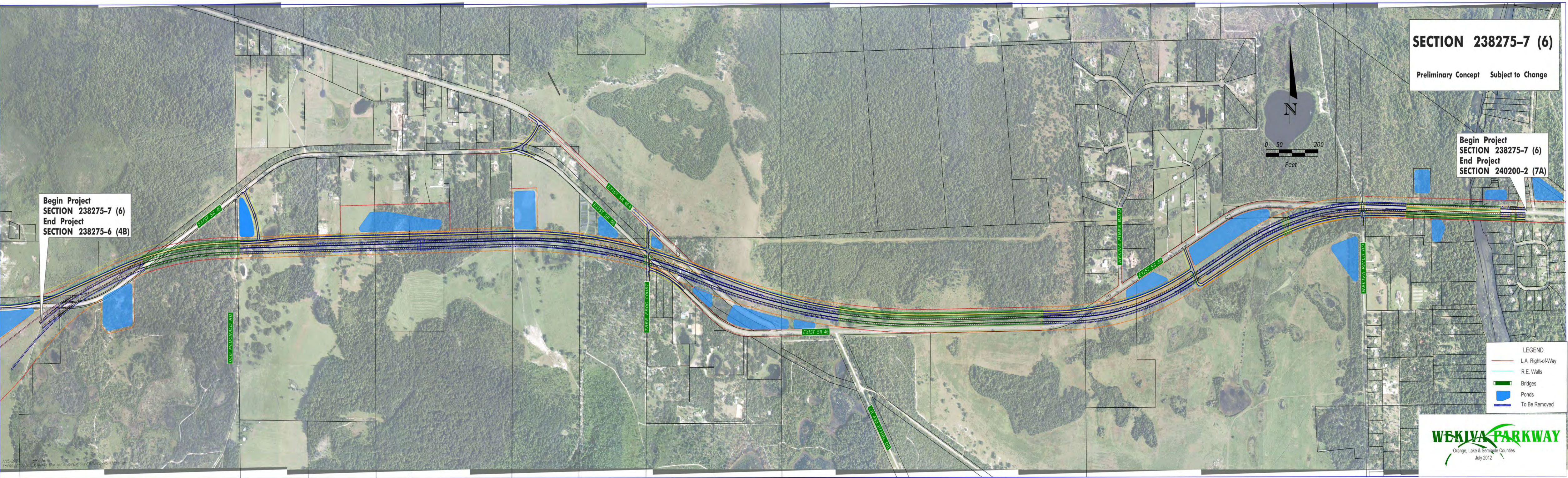
Preliminary Concept Subject to Change

Begin Project
SECTION 238275-7 (6)
End Project
SECTION 240200-2 (7A)

Begin Project
SECTION 238275-7 (6)
End Project
SECTION 238275-6 (4B)



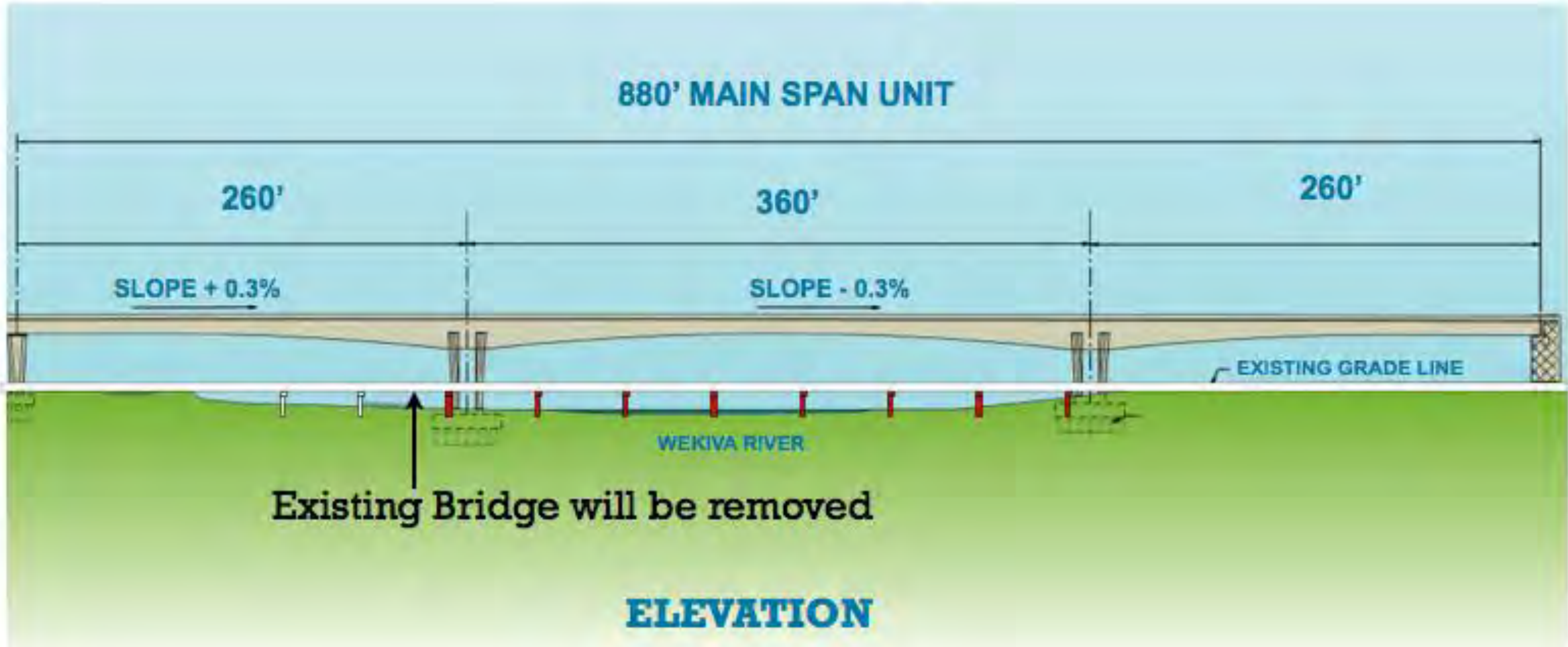
- LEGEND
- L.A. Right-of-Way
 - R.E. Walls
 - Bridges
 - Ponds
 - To Be Removed



Section 6 – Bridge Charettes



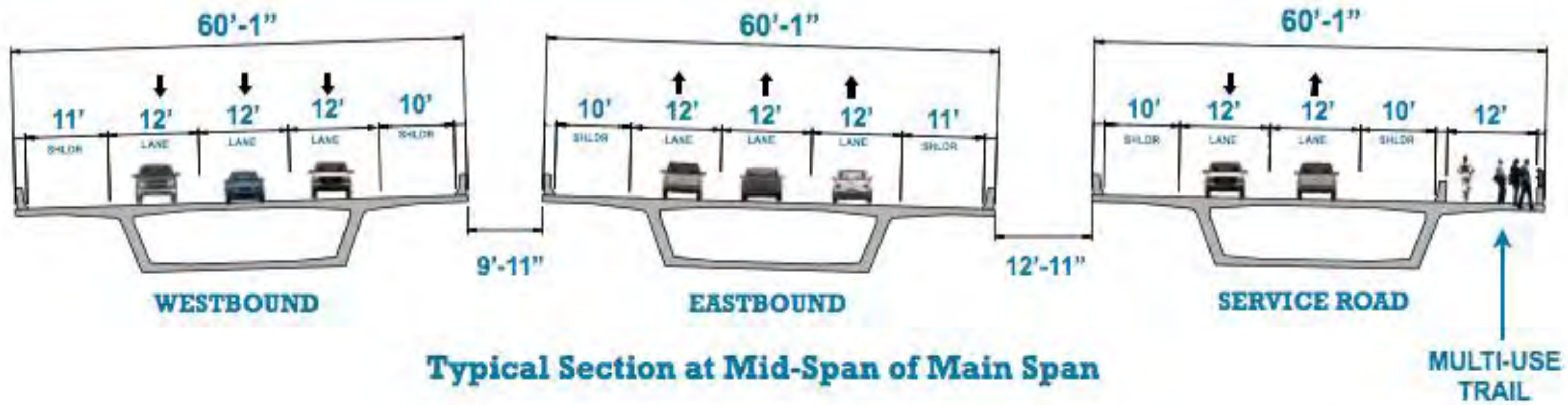
Wekiva River Bridge Concepts



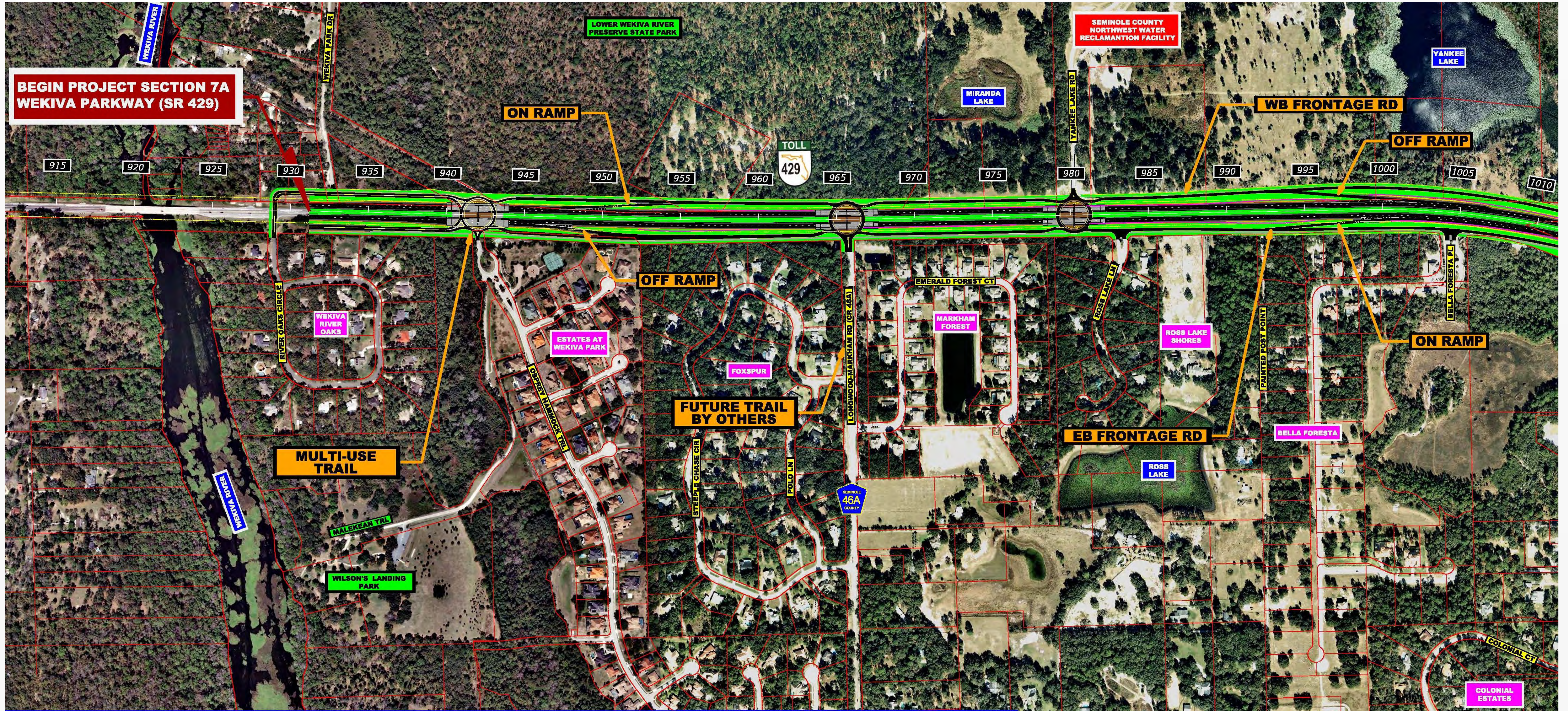
Section 6 – Bridge Concepts



Typical Cross Sections



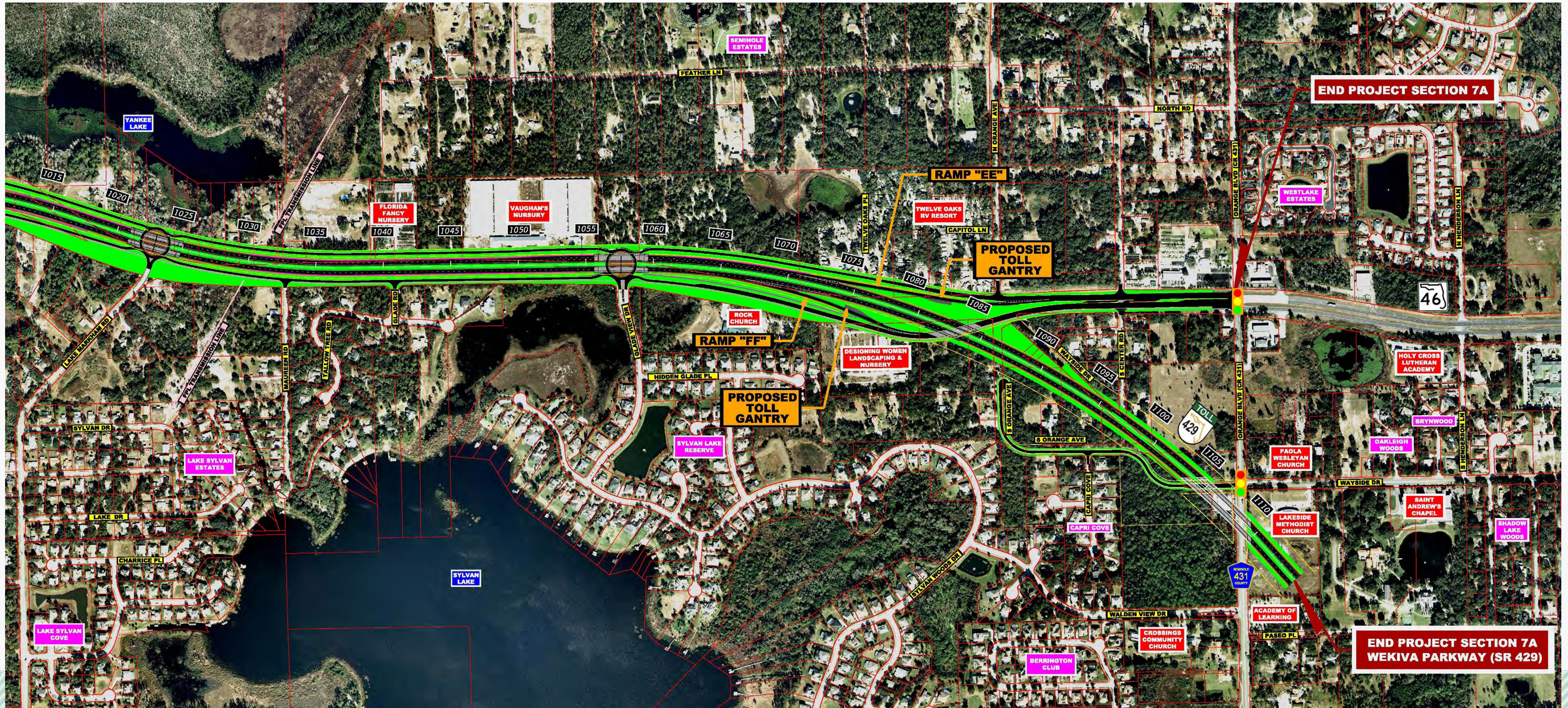
Section 7A - West



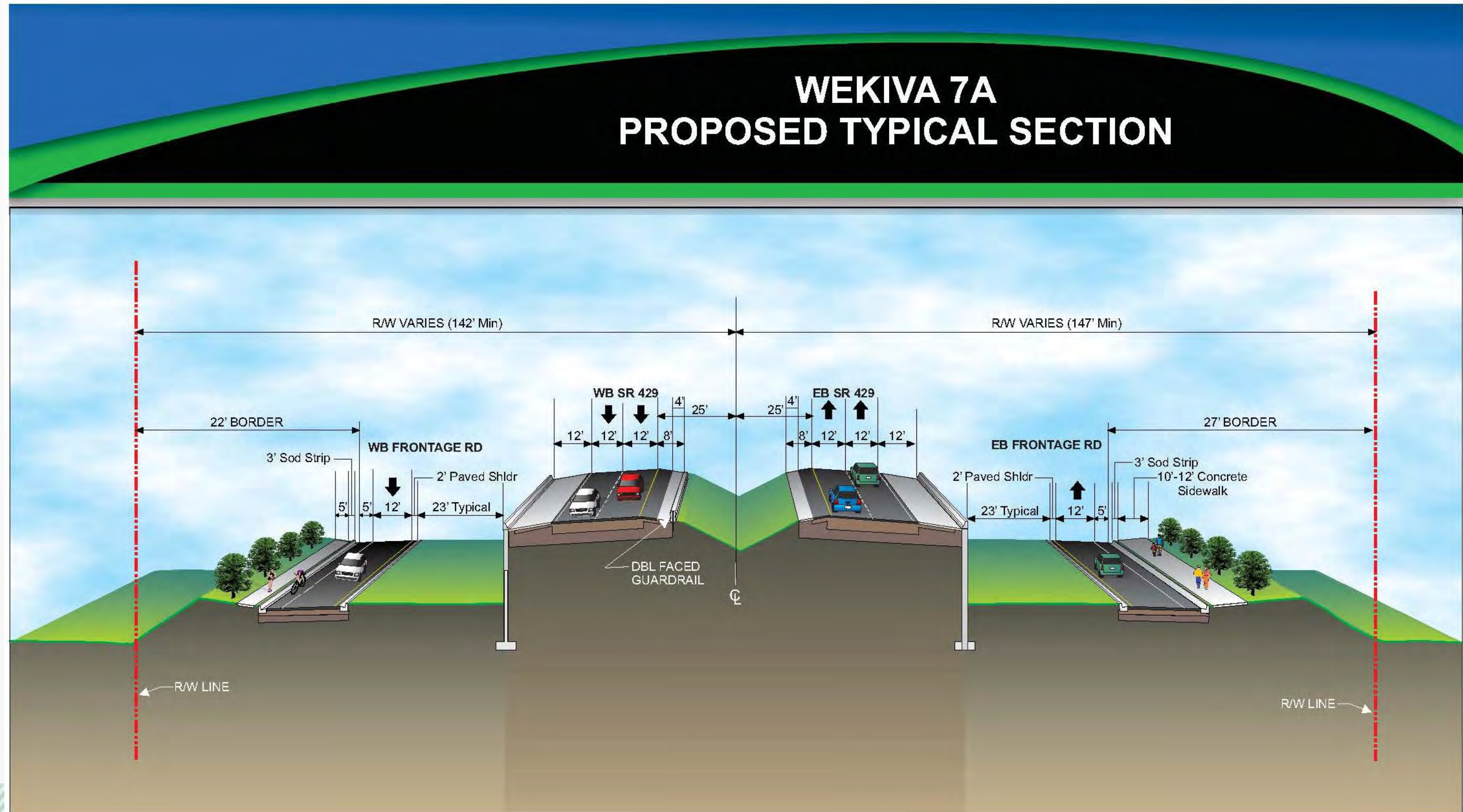
WEKIVA PARKWAY (SR 429)
SECTION 7A

LEGEND	
	PROPOSED ROADWAY
	PROPOSED BRIDGE
	PROPOSED L/A ROW
	SOD
	PROPOSED SIDEWALK & SHARED USE PATH
	PROPOSED ROW
	SIGNALIZED INTERSECTION
	EXISTING ROW & PROPERTY LINE

Section 7A - East



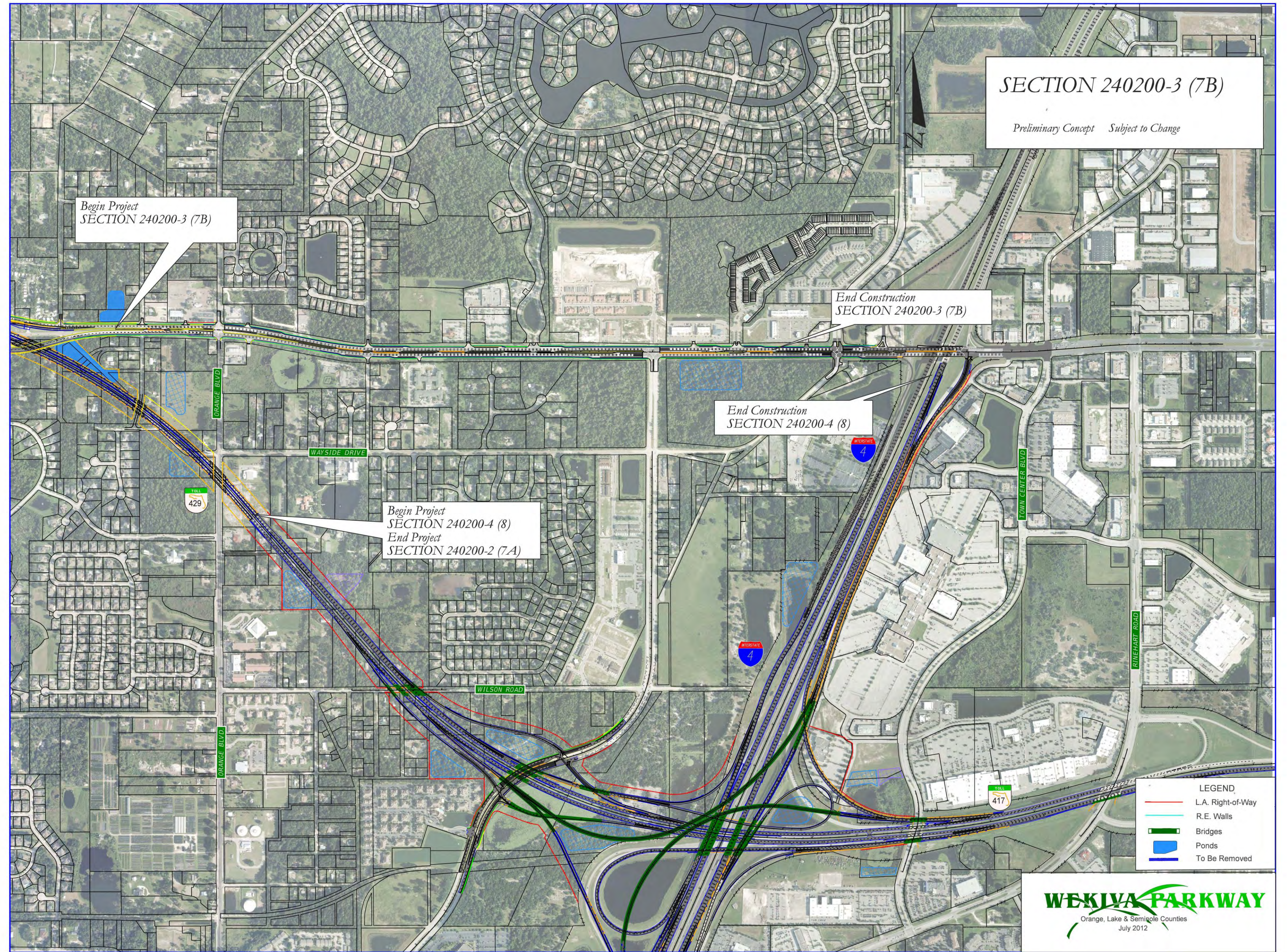
Section 7A – Typical Section



Section 7A – Public Meeting Nov. 12, 2013



Sections 7B & 8



Schedule Recap

The Wekiva Parkway will be completed and **open to traffic***
as follows:

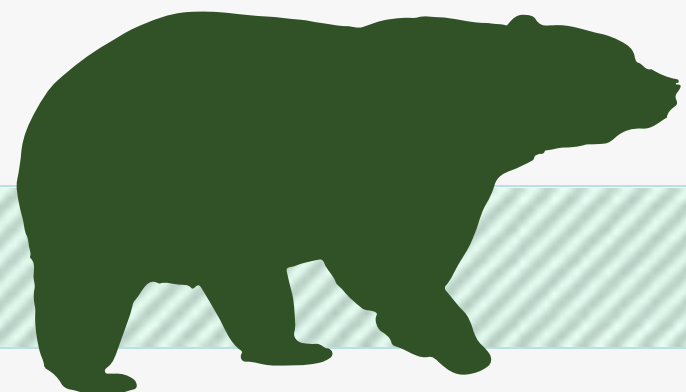
Orlando-Orange County Expressway Authority Sections:

- 1A & 1B – Late 2016
- 2A, 2B & 2C – 2019

Florida Department of Transportation Sections

- 3A, 3B & 5 – 2019
- 4A & 4B – Late 2014 (Under Construction)
- 6 – 2020
- 7A – 2020 - 2021
- 7B & 8 – 2021

*Schedule Subject to Change



What's Next?

- **Final Design Continues**
- **Opportunities for Community Input**
 - ✓ **Public Meetings: Section 5 & 6 – April 2014**
Section 1A & 1B – Summer 2014
 - ✓ **Community Presentations**
 - ✓ **Updates & Comments via Website: www.wekivaparkway.com**
- **First Section (4A & 4B) Open to Traffic – Late 2014**



For More Information:

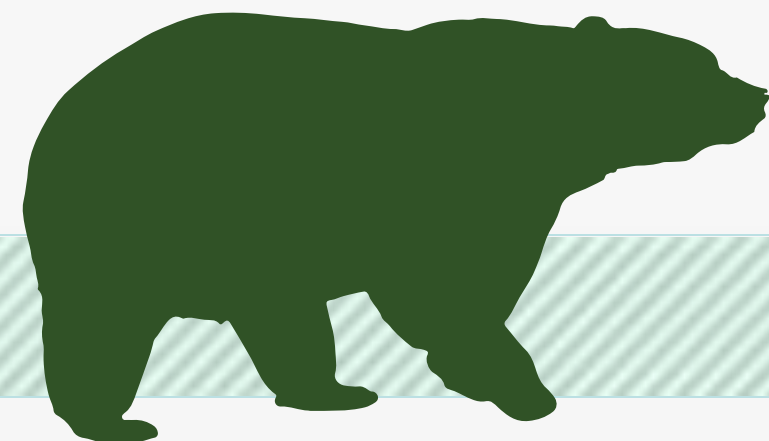
Mary Brooks

Public Involvement Coordinator

C: 407-694-5505

E: Info@wekivaparkway.com

W: www.wekivaparkway.com



WEKIVA PARKWAY
Completing Central Florida's Beltway

TOLL 429

HOME | PROJECTS | COCEA PROJECTS | PROJECTS BY COUNTY | PROJECT HISTORY | FAQ | CONTACT US

WELCOME

On behalf of the Florida Department of Transportation and the Orlando-Orange County Expressway Authority, thank you for your interest in the Wekiva Parkway design and construction projects. The Wekiva Parkway (State Road 429) is a cooperative effort between these agencies and the Florida's Turnpike Enterprise.

The Wekiva Parkway (SR 429) would connect to SR 417, completing the beltway around northwest metropolitan Orlando. This estimated \$1.5 billion project includes \$500 million of non-toll road improvements including:

- Building seven (7) miles of four- and six-laning of SR 46 in Lake and Seminole Counties
- Rebuilding the US 441/SR 46 interchange in Mount Dora
- Relocating the CR 46A connection to SR 46 to provide improved wildlife connectivity and additional local road system benefits

[Click here](#) to view the overall project schedule. Please understand schedules are subject to change due to a host of variables.

WEKIVA PARKWAY PROJECT SECTION MAP

Click on a Section Number for Project Details.

Click here to view larger map

The 25-mile tolled expressway will provide travel alternatives and relieve US 441, SR 46 and other area roads of traffic congestion resulting from growth and travel between Orange, Lake and Seminole Counties.

Authorized in 2004 by the Wekiva Parkway and Protection Act (Chapter 369, Part III, F.S.), this expressway has been heralded as a shining example for transportation planning through an environmentally sensitive area. Development of the Wekiva Parkway has included setting aside more than 3,400 acres of

LATEST NEWS

Click on text for details

August 2013
COCEA Reaches 60% Design Plans on Section 2A

July 2013
FDOT Kicks Off Design for Section 7A

July 2013
Gov. Scott Kicks Off Wekiva Parkway - July 10, 2013

July 2013
150 Attend Section 3A & 3B Public Meeting Open House - July 11, 2013

June 2013
Nearly 200 Attend FDOT Section 8 Public Meeting - June 11, 2013

May 2013
Lake Co. Commissioners Adopt Recommended CR 46A Alignment

PUBLIC MEETING - Sections 3A & 3B Preliminary Design Open House Reop

PROJECT DOCUMENTS

PRESENTATIONS

PRE 88 RELEASES

[All News](#)

CONTACT US

Mary Brooks
Public Information Officer
Info@wekivaparkway.com
407-694-5505

twitter

facebook

WEKIWA PARKWAY

Completing Central Florida's Beltway



Thank You!

Questions?

