

WEKIWA PARKWAY

Completing Central Florida's Beltway

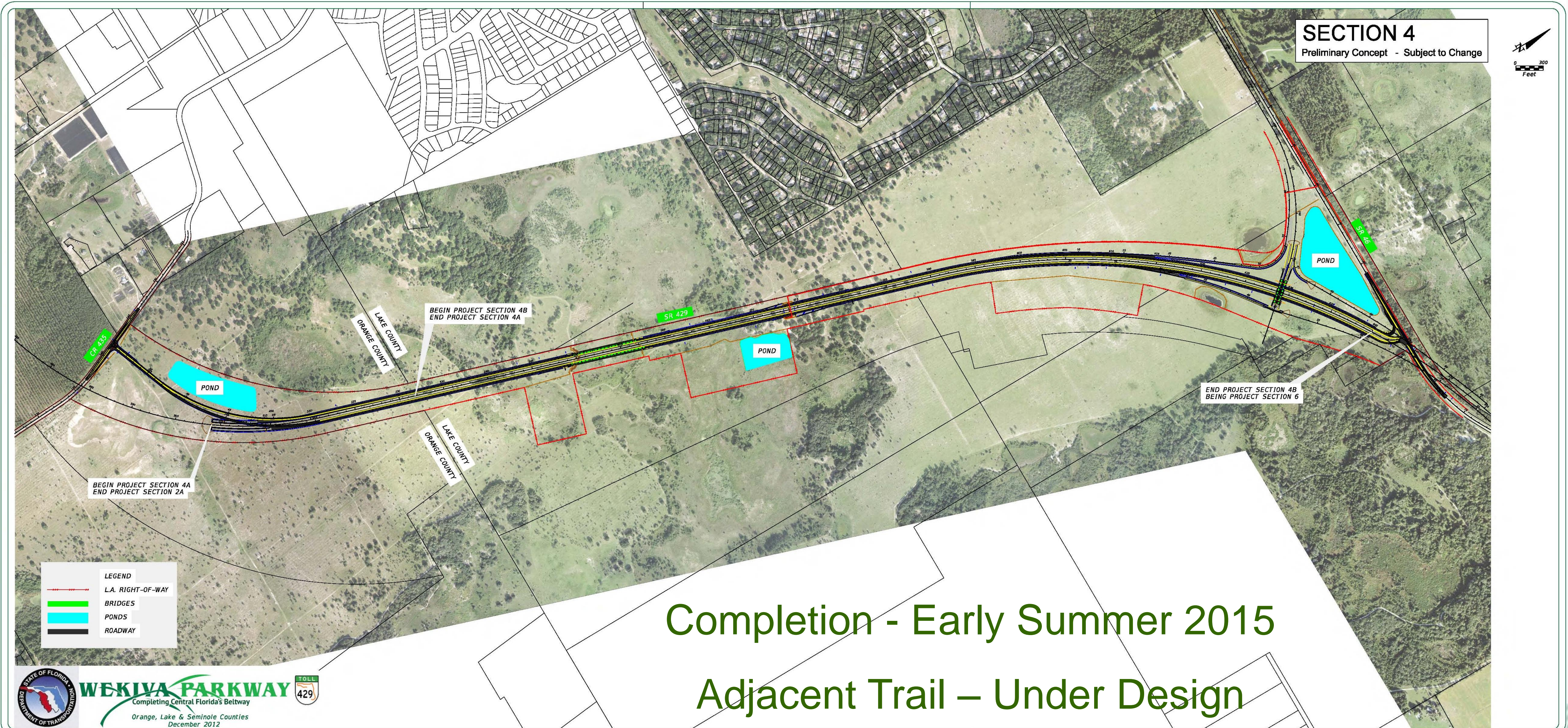
A Regional Transportation Solution



**SECTION 4A & 4B
CONSTRUCTION UPDATE
FEBRUARY 2015**



Section 4A & 4B



Section 4A & 4B

Work on the Floodplain
Bridge and approaching
parkway



Sections 4A & 4B



Section 4A & 4B Construction Update

Paving progressing
north and south of
Floodplain bridge



Section 4A & 4B Construction Update



Sections 4A & 4B



Section 4A & 4B Construction Update

Work on parkway,
ramps and bridge
approaching SR 46



Section 4A & 4B Construction Update



Section 4A & 4B Construction Update



Section 4A & 4B Construction Update

Paving progress south
of Floodplain Bridge
heading toward CR
435 / Mt. Plymouth
Rd.



Section 4A & 4B Construction Update

Temporary parkway
ramp connection to
CR 435



Sections 4A & 4B



Pavement, street lights and wildlife fencing on Section 4A near CR 435 (Mt. Plymouth Rd.)



For More Information:

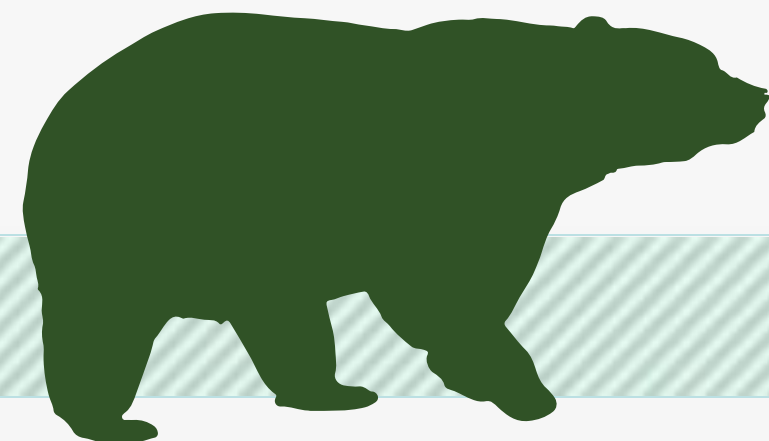
Mary Brooks

Public Involvement Coordinator

C: 407-694-5505

E: Info@wekivaparkway.com

W: www.wekivaparkway.com



WEKIVA PARKWAY

Completing Central Florida's Beltway

HOME | FDOT SECTIONS | CITY SECTIONS | SECTIONS BY COUNTY | PROJECT HISTORY | FAQ | CONTACT US

WELCOME

On behalf of the Florida Department of Transportation and the Central Florida Expressway Authority (CFEA), formerly the Orlando-Orange County Expressway Authority, thank you for your interest in the Wekiva Parkway design and construction project. The Wekiva Parkway (State Road 429) is a cooperative effort between these agencies and the Florida's Turnpike Enterprise.

The Wekiva Parkway (SR 429) would connect to SR 617, completing the beltway around northeast metropolitan Orlando. This estimated \$1.4 billion project includes \$200 million of non-toll road improvements including:

- Widening seven (7) miles of SR 46 in Lake and Seminole Counties
- Rebuilding the US 611/SR 46 interchange in Mount Dora
- Shifting the SR 460 connection to SR 46 so wildlife can move more safely between habitats.

[Click here to view the overall Project Schedule.](#) Please understand schedules are subject to change due to a host of variables.

WEKIVA PARKWAY PROJECT SECTION MAP

[Click on a Section Number for Project Details.](#)

[Click here to view larger map](#)

The 25-mile tolled expressway will provide travel alternatives and relieve US 611, SR 46 and other area roads of traffic congestion resulting from growth and travel between Orange, Lake and Seminole Counties.

Authorized in 2004 by the Wekiva Parkway and Protection Act (Chapter 248, Part II, F.S.), this expressway has been heralded as a shining example for transportation planning through an environmentally sensitive area. Development of the Wekiva Parkway has included setting aside more than 2,000 acres of land for conservation. The parkway also will include numerous wildlife bridges, and will be largely elevated to reduce accidents between vehicles and wildlife.

RELEVANT LINKS

- Central Florida Expressway Authority
- Florida Department of Transportation
- Florida's Turnpike Enterprise
- SR 429
- I-4 Project
- FDOT Central Florida Project
- Florida's Turnpike Enterprise

FOLLOW US

- Facebook
- Twitter

Copyright 2015. All rights reserved. Home | FDOT Sections | City Sections | Sections by County | Project History | FAQ | Contact Us

Public participation is solicited without regard to race, color, national origin, age, sex, religion, disability or family status.

LATEST NEWS

[Click on date for details](#)

- June 2014
More Than 100 Attend FDOT Section 2 Public Meeting Open House
- June 2014
Wekiva Parkway PO&E Study Wins 2014 Engineering Excellence Award
- June 2014
Seminole County Commissioners Receive Update on Wekiva Parkway
- May 2014
Check Out the Latest Section 45 & 46 Construction Phase
- April 2014
More Than 200 Attend FDOT Public Meeting on Sections 2 & 6

PUBLIC MEETING - 100-Plex Attend FDOT Section 2 Meeting

PROJECT DOCUMENTS

PRESENTATIONS

PRESS RELEASES

CONTACT US

Mary Brooks
Public Information Officer
Info@wekivaparkway.com
407-694-5505

