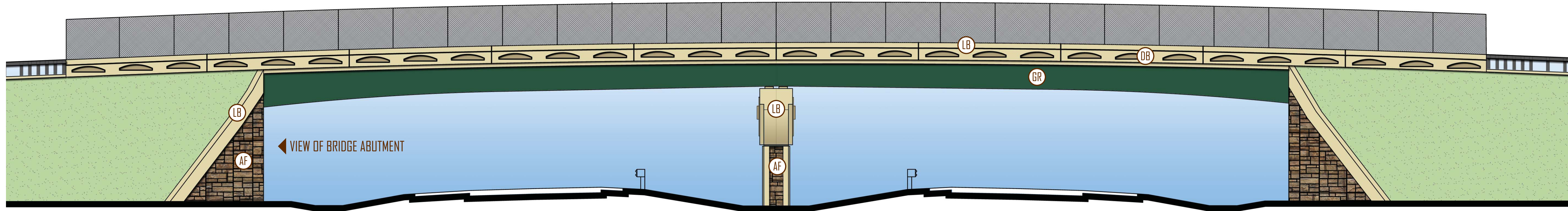
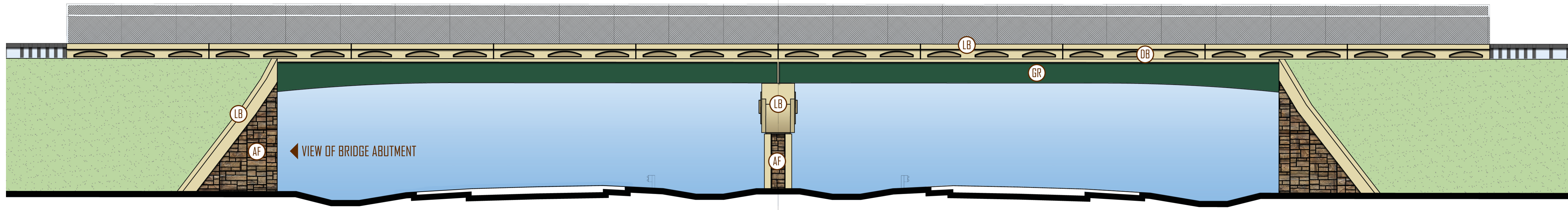


**FENCE TYPE:** FOOT INDEX 810 FENCE (VERTICAL)  
**FINISH:** VINYL COATED  
**COLOR:** DARK BROWN (SUBMIT SAMPLE FOR OWNER REVIEW AND APPROVAL)

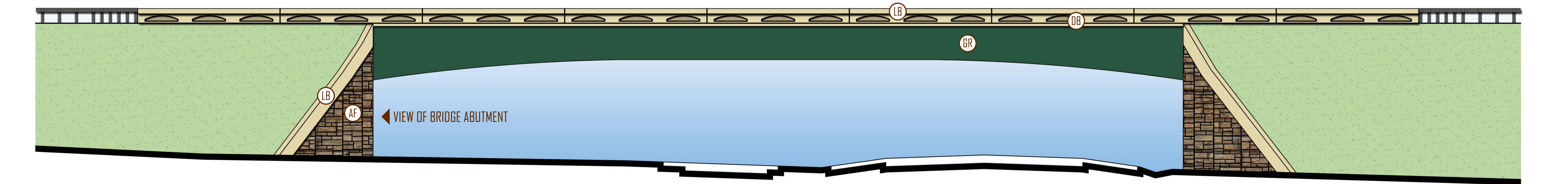


**BELGIAN STREET BRIDGE** NOT TO SCALE

**FENCE TYPE:** FOOT INDEX 811 FENCE (CURVED TOP)  
**FINISH:** VINYL COATED  
**COLOR:** DARK BROWN (SUBMIT SAMPLE FOR OWNER REVIEW AND APPROVAL)



**YOTHERS ROAD BRIDGE** NOT TO SCALE



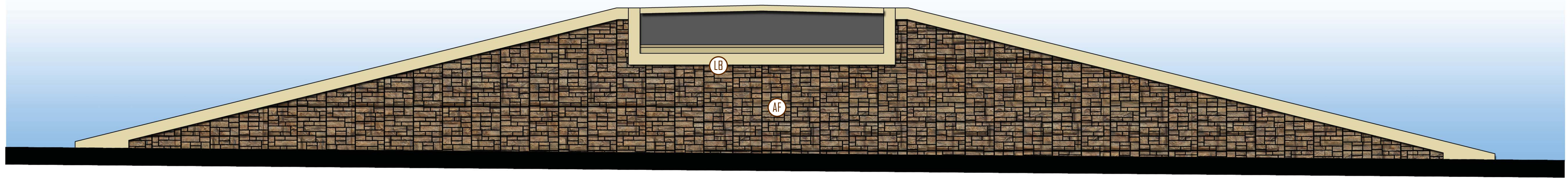
**KELLY PARK ROAD BRIDGE** NOT TO SCALE

**LEGEND**

- AF
 LARGE ASHLAR FORMLINER  
 PATTERN: CUSTOMROCK #1501-R2  
 MAX. RELIEF = 2"  
 BASE COLOR: FED. COLOR #33510  
 HIGHLIGHTS: #SW-2195 [50-60%]  
                   #SW-2124 [10-20%]  
                   #SW-2070 [WASH COAT]
- LB
 LIGHT BROWN (FED. COLOR #33690)  
 FINISH: SMOOTH / LIGHT SANDBLAST
- DB
 DARK BROWN (FED. COLOR #33446)  
 FINISH: SMOOTH / LIGHT SANDBLAST
- GR
 DARK GREEN (FED. COLOR #34227)
- BR
 DARK BRONZE (FED. COLOR #20062)

**NOTES:** ALL COLORS ARE FEDERAL STANDARD 595B (7/1994) COLORS OR SHERWIN WILLIAMS (SW) COLORS.





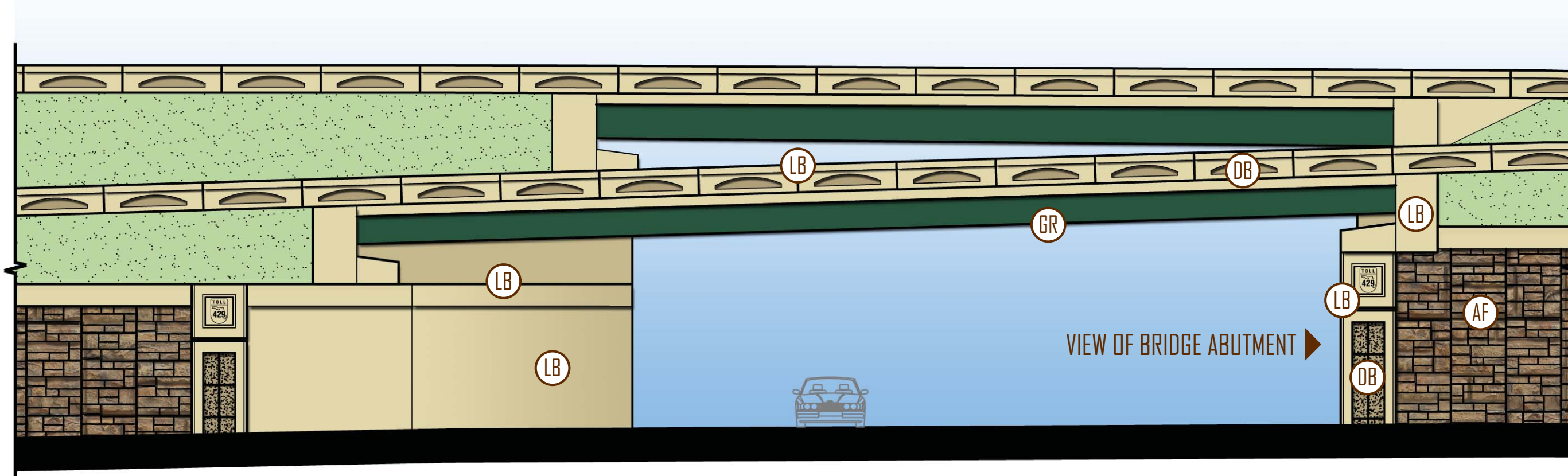
## LEGEND

LARGE ASHLAR FORMLINER  
 PATTERN: CUSTOMROCK #1501-R2  
 MAX. RELIEF = 2"  
 (AF) BASE COLOR: FED. COLOR #3351D  
 HIGHLIGHTS: #SW-2195 [50-60%]  
               #SW-2124 [10-20%]  
               #SW-207D [WASH COAT]

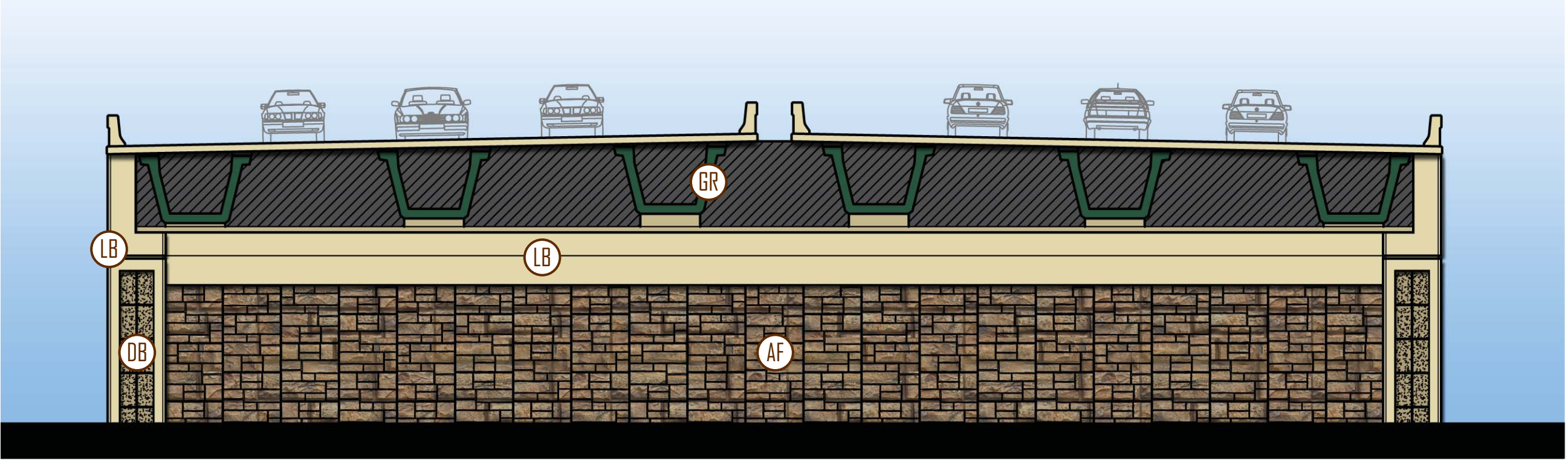
- (LB) LIGHT BROWN (FED. COLOR #33690)  
FINISH: SMOOTH / LIGHT SANDBLAST
- (DB) DARK BROWN (FED. COLOR #33446)  
FINISH: SMOOTH / LIGHT SANDBLAST
- (GR) DARK GREEN (FED. COLOR #34227)
- (BR) DARK BRONZE (FED. COLOR #20062)

NOTES: ALL COLORS ARE FEDERAL STANDARD 595B (7/1994) COLORS OR SHERWIN WILLIAMS (SW) COLORS.

## BRIDGE RETAINING WALL ABUTMENT ELEVATION NOT TO SCALE

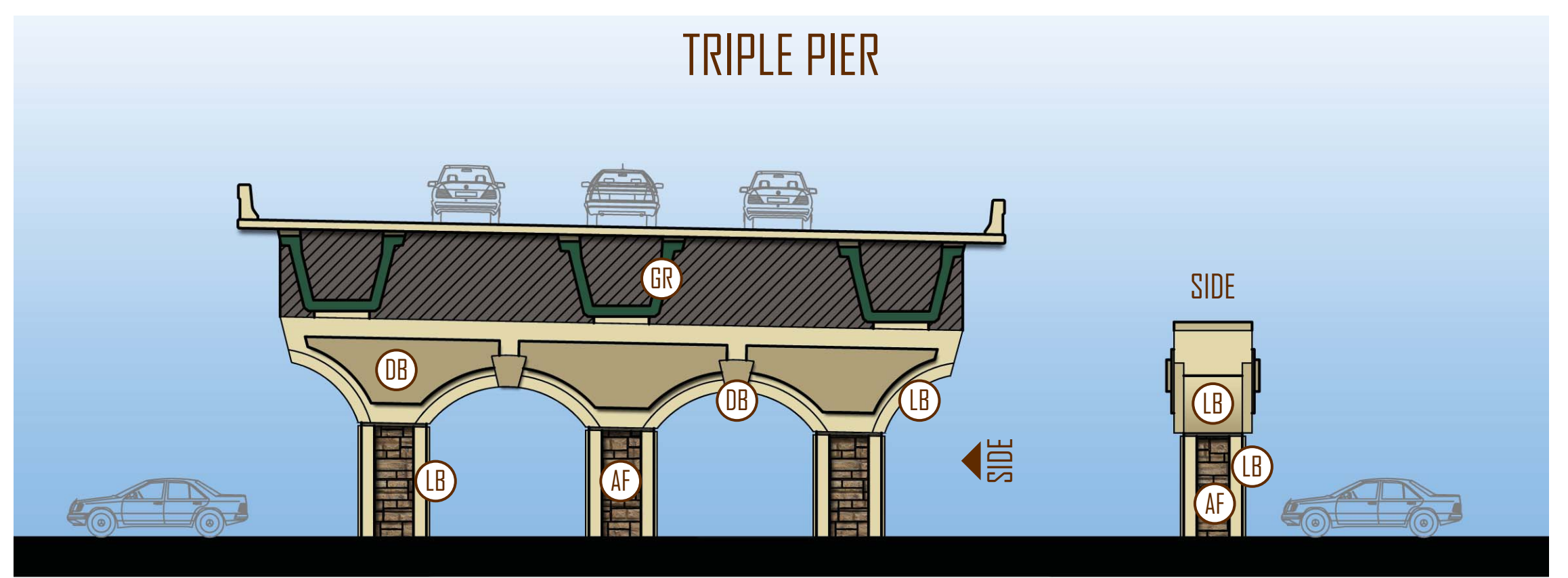
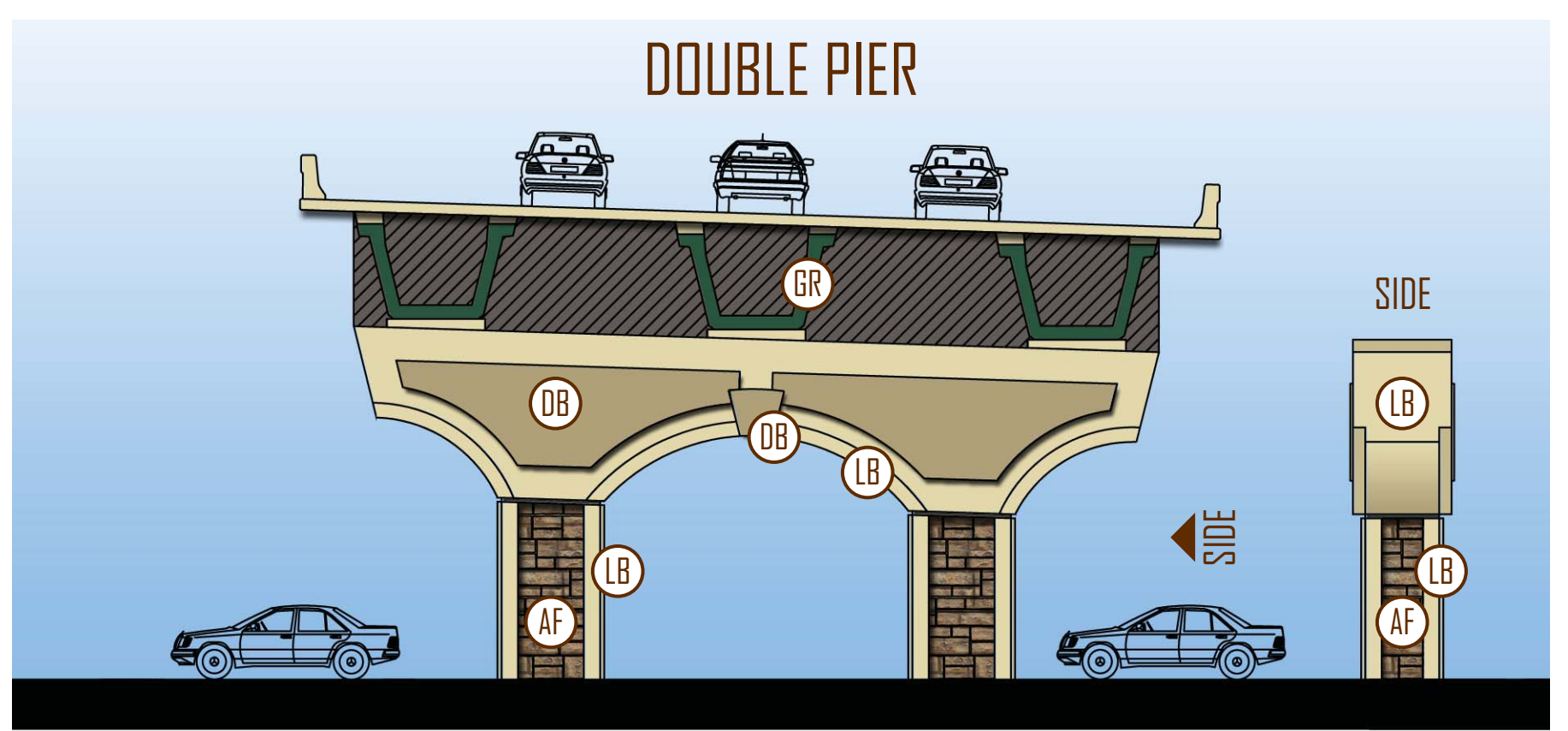
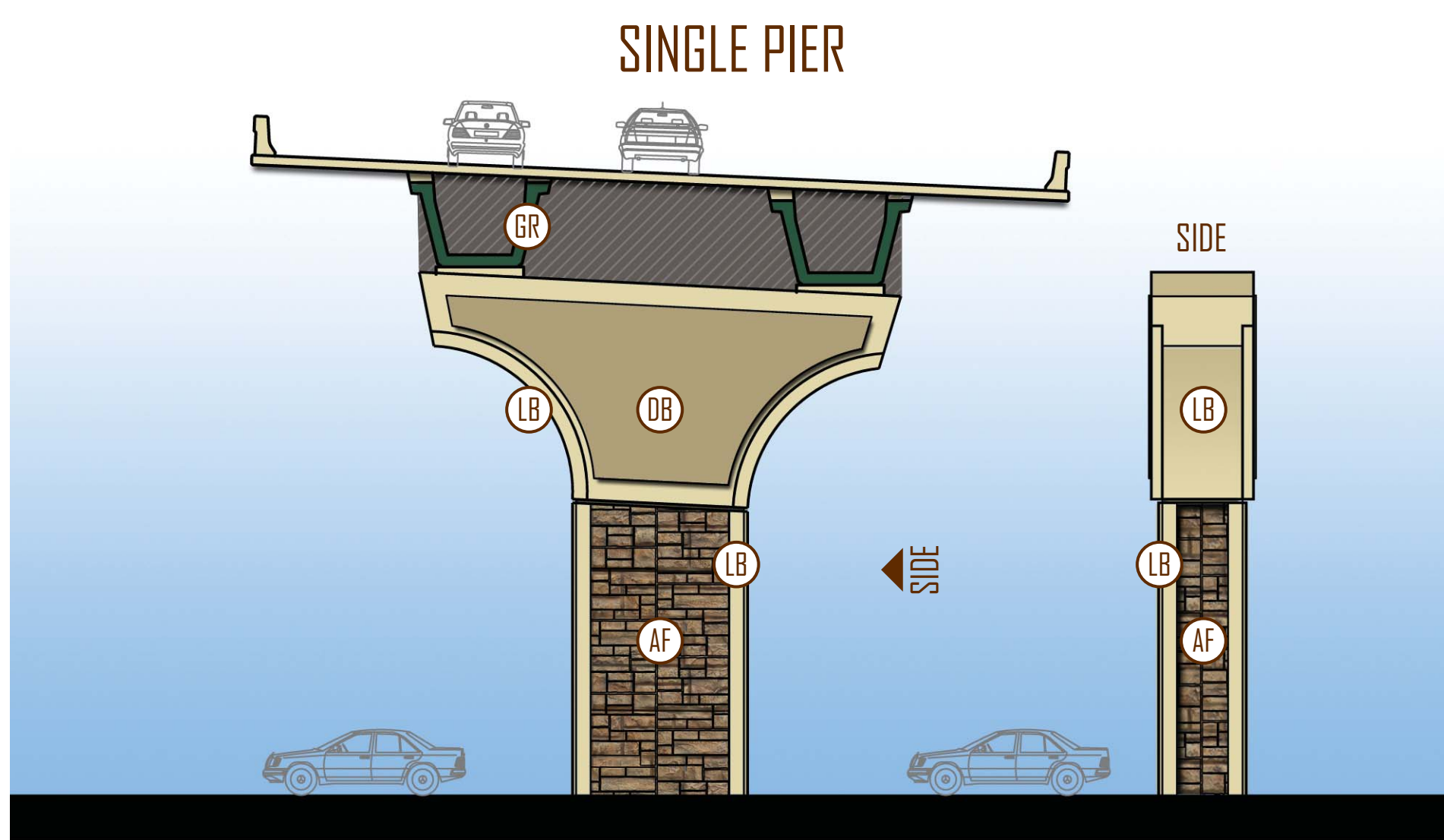


BRIDGE ELEVATION



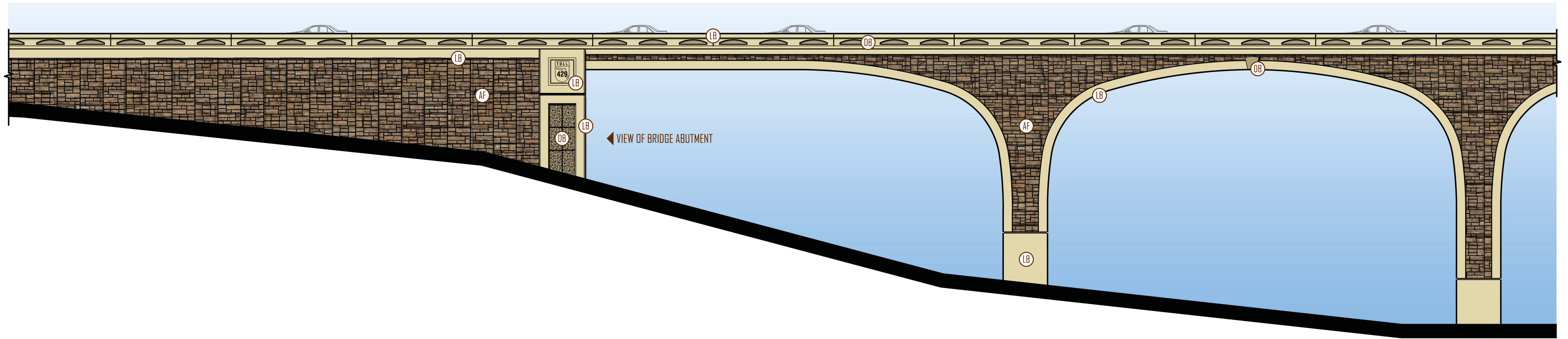
BRIDGE ABUTMENT ELEVATION

## SOUTHFORK DRIVE - BRIDGE MSE WALL ELEVATIONS NOT TO SCALE

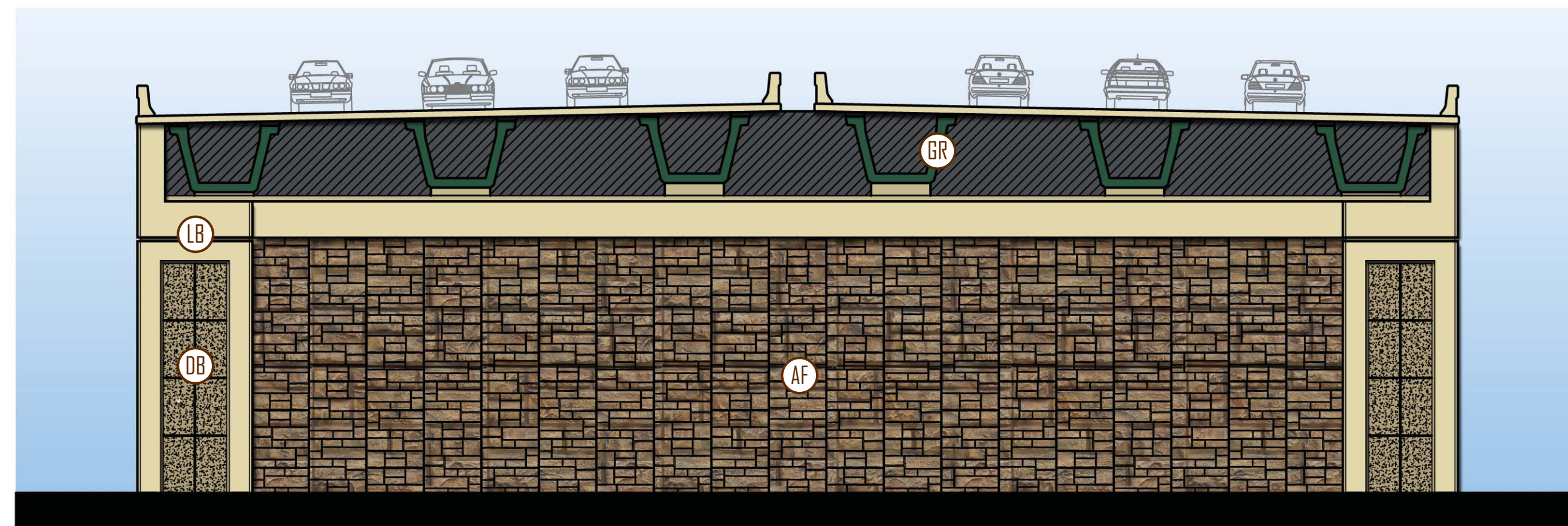


## BRIDGE PIERS NOT TO SCALE

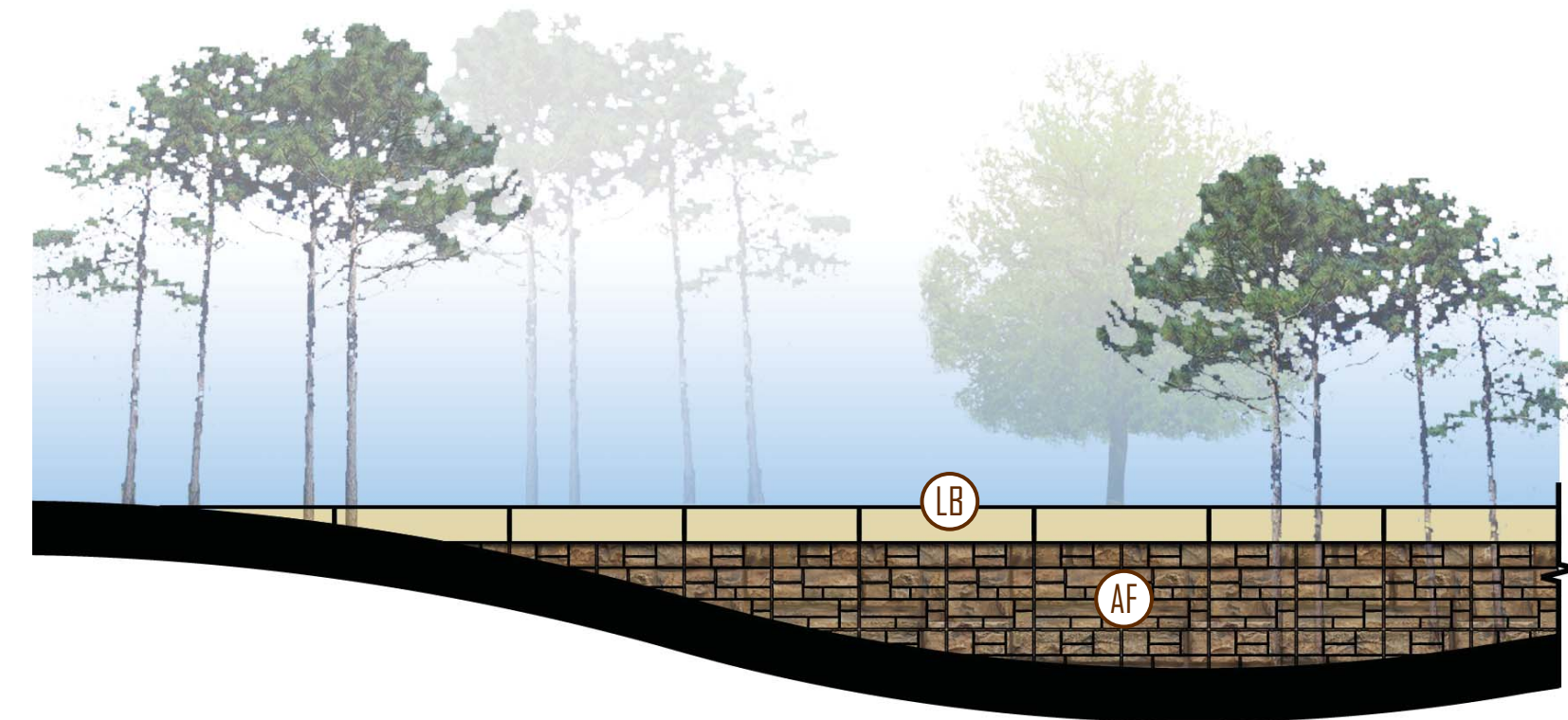




LOW AREA/LAKE VICTOR - BRIDGE MSE WALL ELEVATION NOT TO SCALE



LOW AREA/LAKE VICTOR  
BRIDGE MSE WALL ABUTMENT ELEVATION NOT TO SCALE



TIERED / LANDSCAPE WALL NOT TO SCALE

## LEGEND

LARGE ASHLAR FORMLINER  
 PATTERN: CUSTOMROCK #1501-R2  
 MAX. RELIEF = 2"  
 (AF) BASE COLOR: FED. COLOR #33510  
 HIGHLIGHTS: #SW-2195 [50-60%]  
 #SW-2124 [10-20%]  
 #SW-2070 [WASH COAT]

(LB) LIGHT BROWN (FED. COLOR #33690)  
 FINISH: SMOOTH / LIGHT SANDBLAST

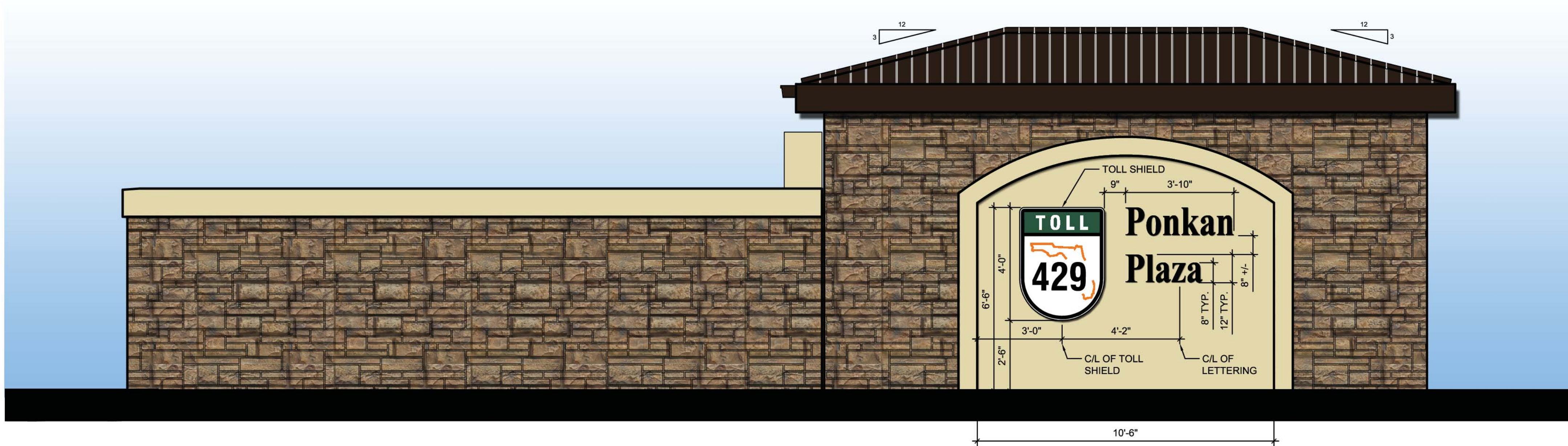
(DB) DARK BROWN (FED. COLOR #33446)  
 FINISH: SMOOTH / LIGHT SANDBLAST

(GR) DARK GREEN (FED. COLOR #34227)

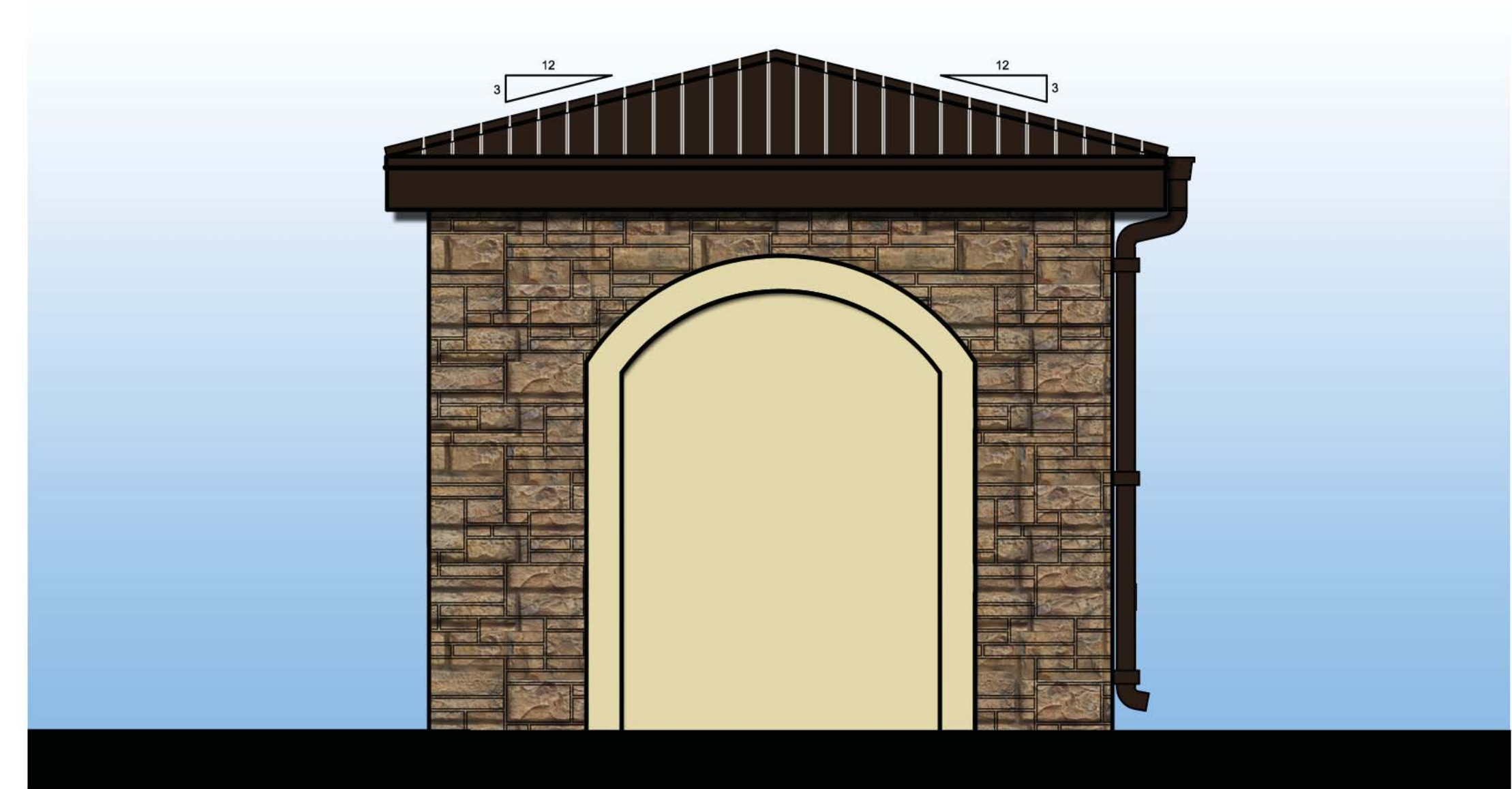
(BR) DARK BRONZE (FED. COLOR #20062)

NOTES: ALL COLORS ARE FEDERAL STANDARD 595B (7/1994) COLORS  
 OR SHERWIN WILLIAMS (SW) COLORS.





WEST ELEVATION



SOUTH ELEVATION

# TOLL BUILDING NOT TO SCALE

## LEGEND

LARGE ASHLAR FORMLINER  
 PATTERN: CUSTOMROCK #1501-R2  
 MAX. RELIEF = 2"  
 BASE COLOR: FED. COLOR #33510  
 HIGHLIGHTS: #SW-2195 [50-60%]  
                   #SW-2124 [10-20%]  
                   #SW-2070 [WASH COAT]

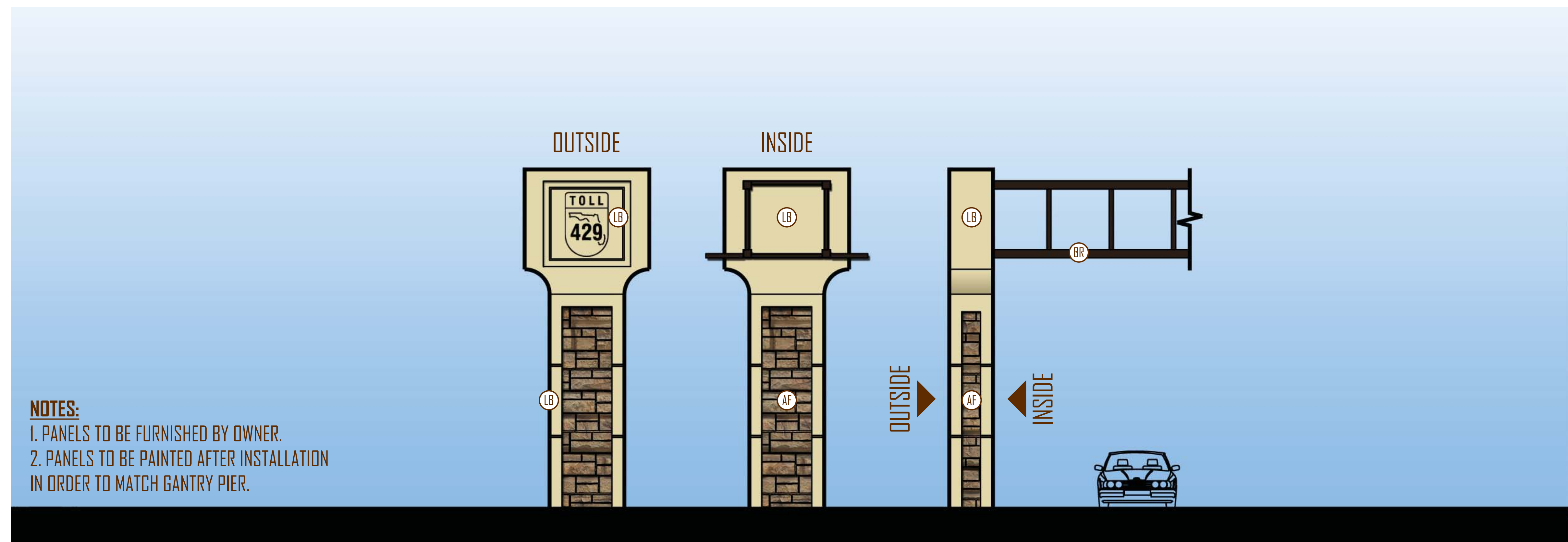
ⓁⓅ LIGHT BROWN (FED. COLOR #33690)  
 FINISH: SMOOTH / LIGHT SANDBLAST

ⓁⓁ DARK BROWN (FED. COLOR #33446)  
 FINISH: SMOOTH / LIGHT SANDBLAST

ⓁⓁ DARK GREEN (FED. COLOR #34227)

ⓁⓁ DARK BRONZE (FED. COLOR #20062)

NOTES: ALL COLORS ARE FEDERAL STANDARD 595B (7/1994) COLORS OR SHERWIN WILLIAMS (SW) COLORS.



**NOTES:**  
 1. PANELS TO BE FURNISHED BY OWNER.  
 2. PANELS TO BE PAINTED AFTER INSTALLATION  
 IN ORDER TO MATCH GANTRY PIER.

# TOLL GANTRY NOT TO SCALE