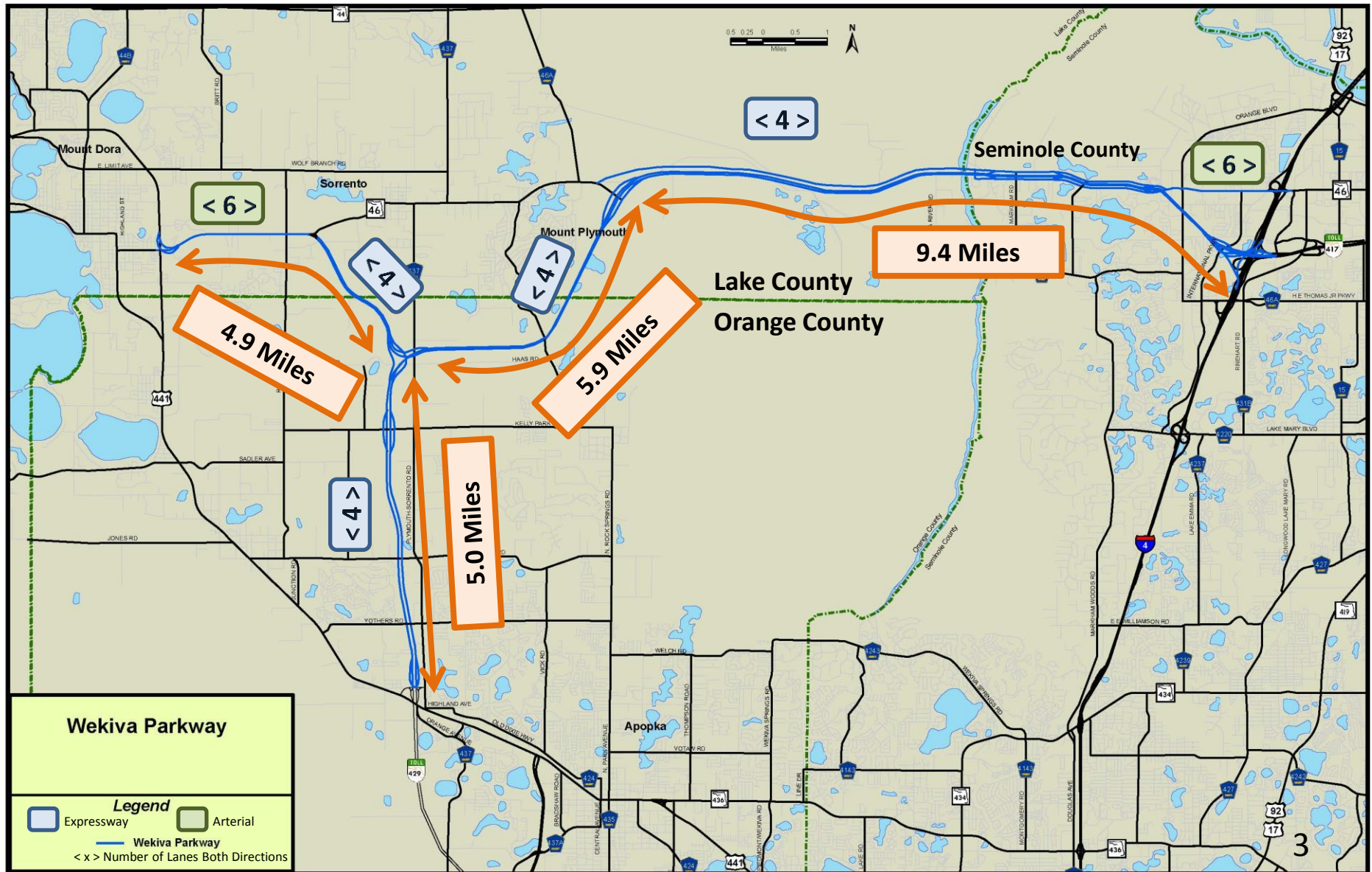


Project Description

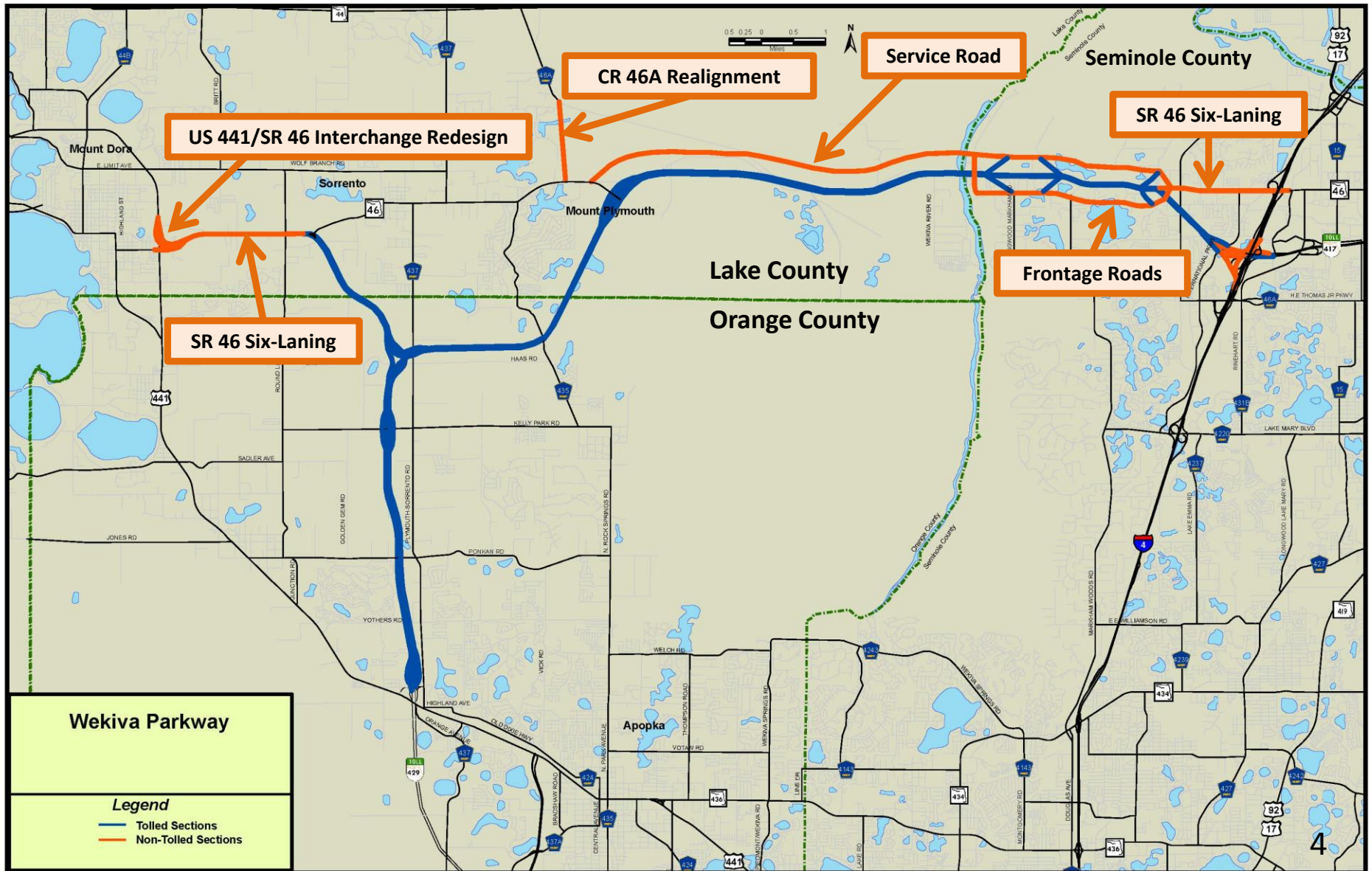
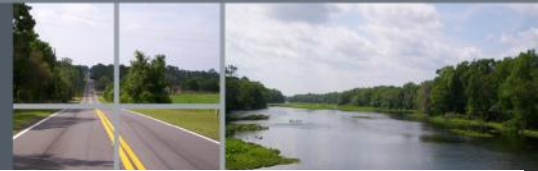


- **The Wekiva Parkway project constructs 25 centerline miles of new toll expressway. Total project cost \$1.7 billion which includes \$500 million of non-toll road improvements including**
 - Construction of 7 miles of 4 and 6-laning of SR 46 in Lake and Seminole Counties
 - Reconstruction of the US 441/SR 46 interchange in Mount Dora
 - Relocation of CR 46A to provide improved wildlife connectivity and additional local road system benefits
- **Provides connectivity to SR 417 and I-4 corridors**

Wekiva Parkway



Tolled/Non-Tolled Segments

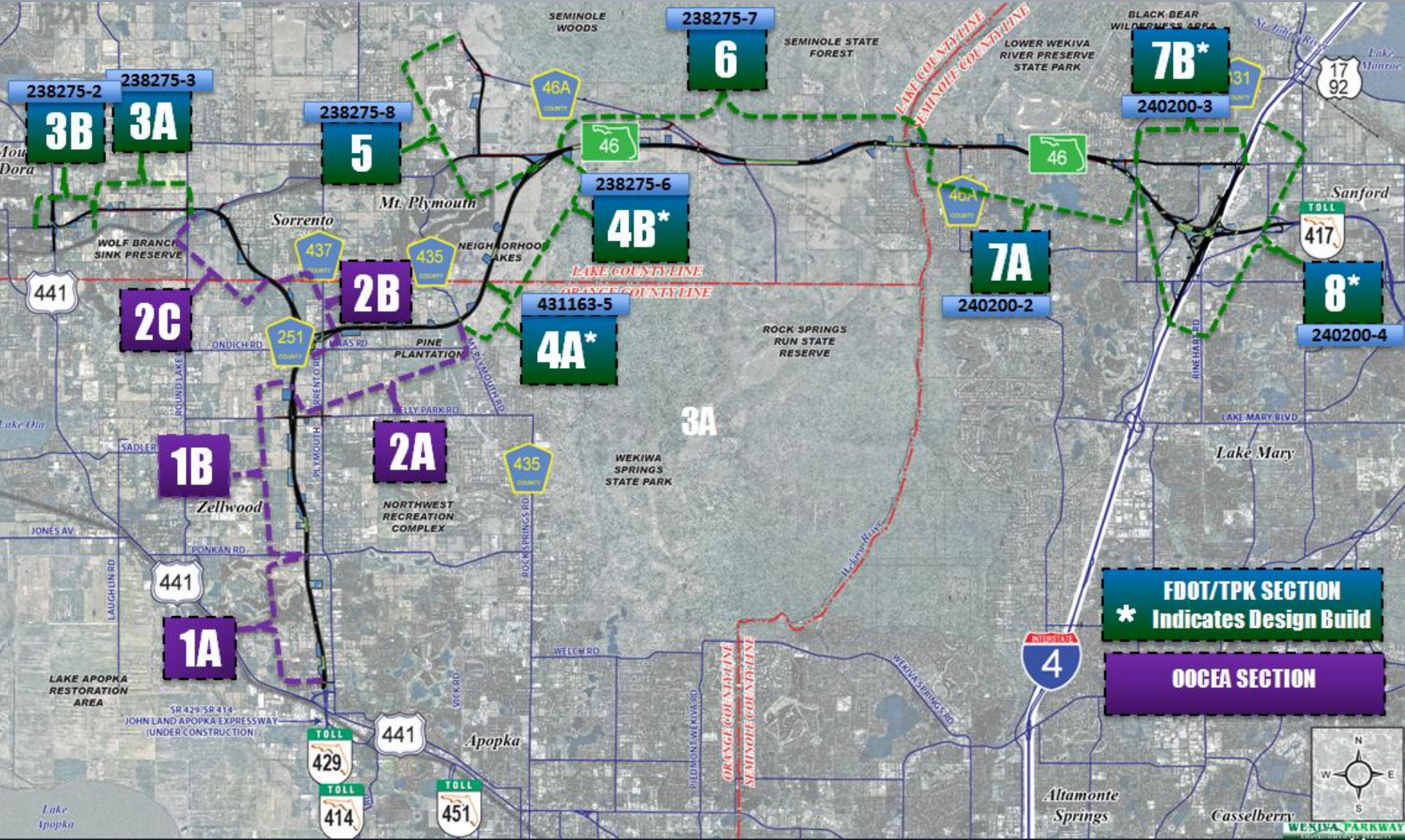


Funding Partners



- **Florida Department of Transportation District 5**
- **Florida's Turnpike**
- **Orlando Orange County Expressway Authority**

Project Construction Sections



FDOT/TPK SECTION
* Indicates Design Build

OOCEA SECTION

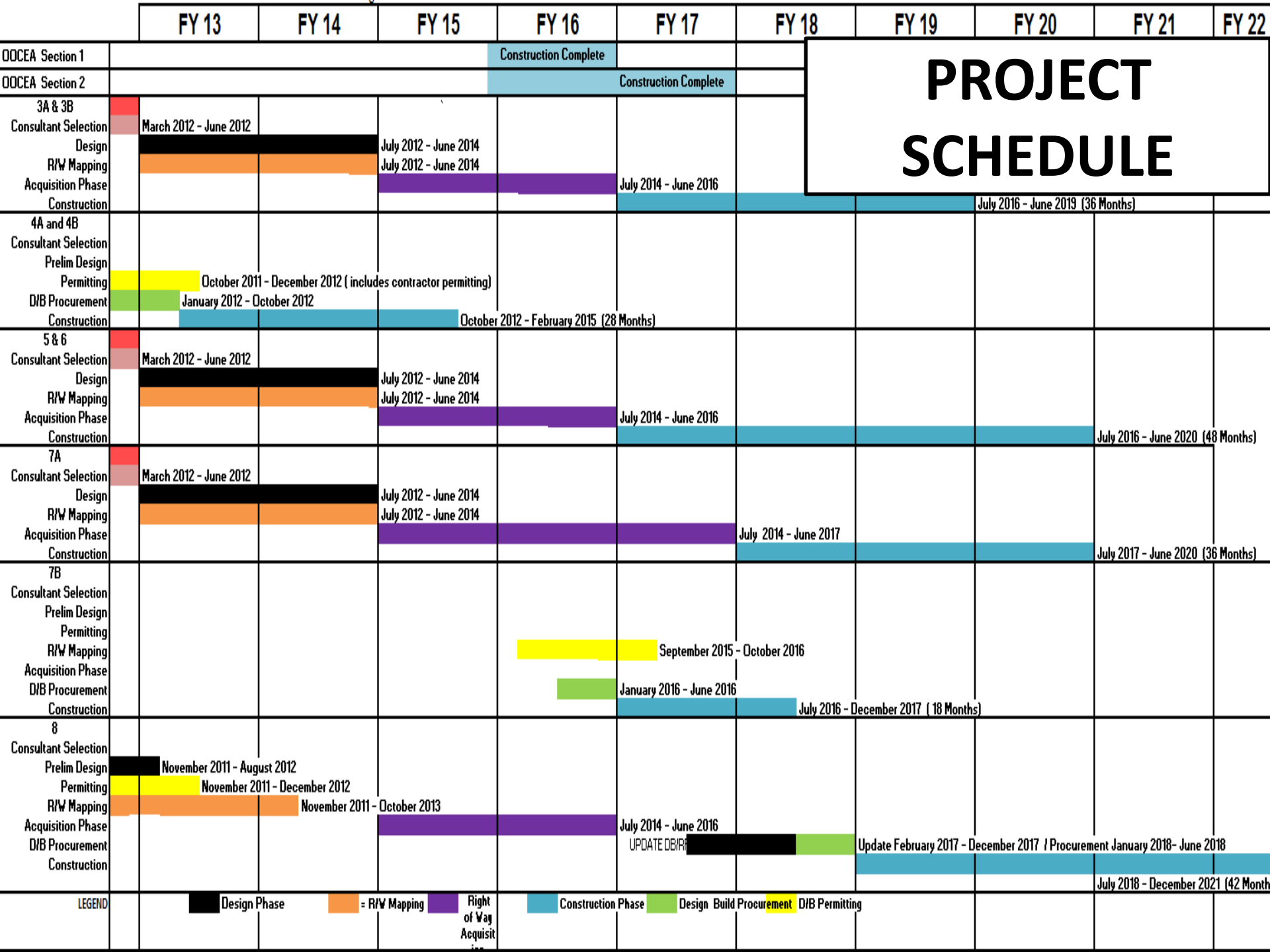


FDOT/OOCEA Agreement in Principle



For each agency's respective section they will:

- Perform Final Design**
- Construct**
- Finance**
- Operate**
- Maintain**
- Collect Tolls**
- Keep all toll revenue**

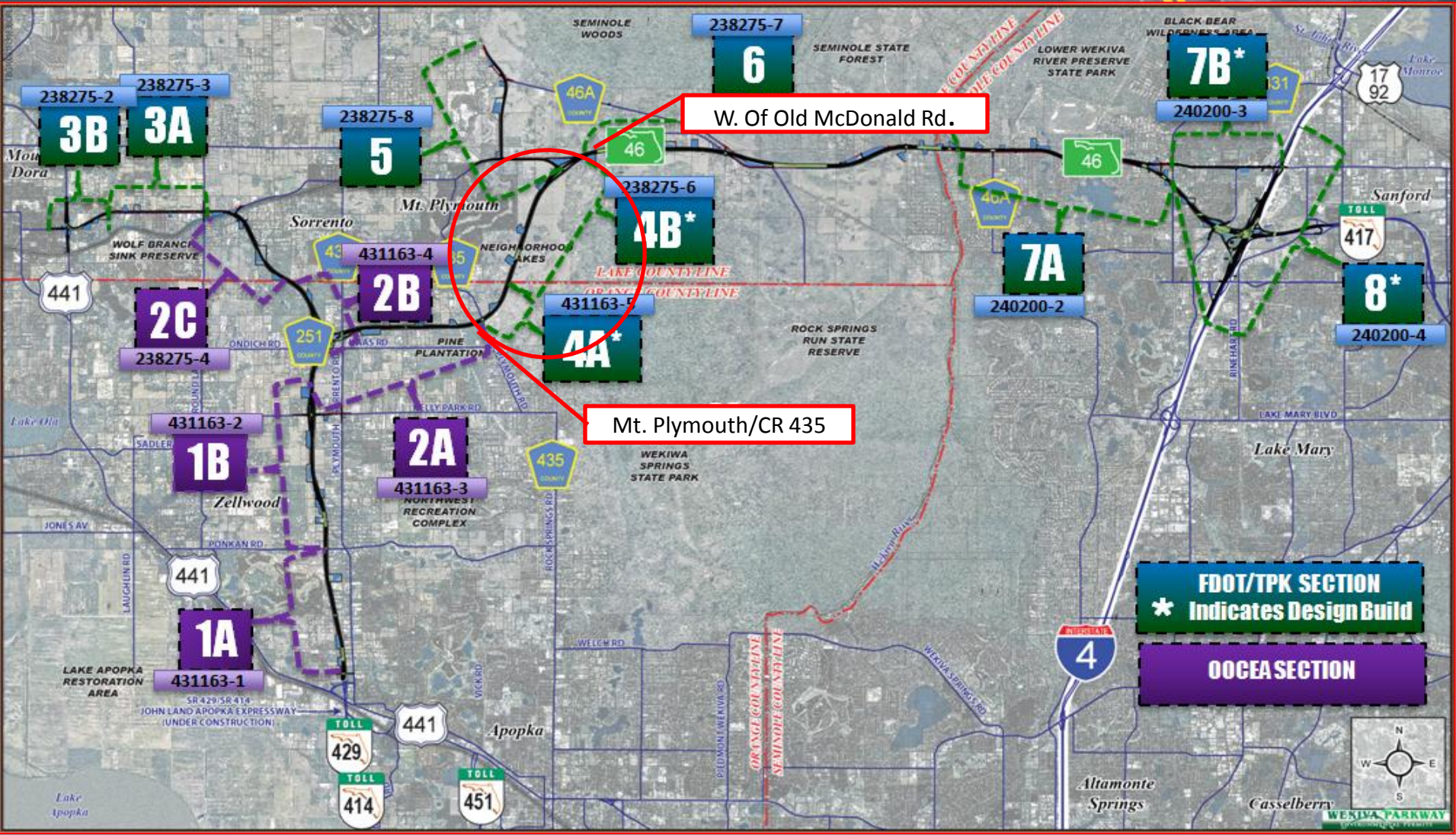


Project Status

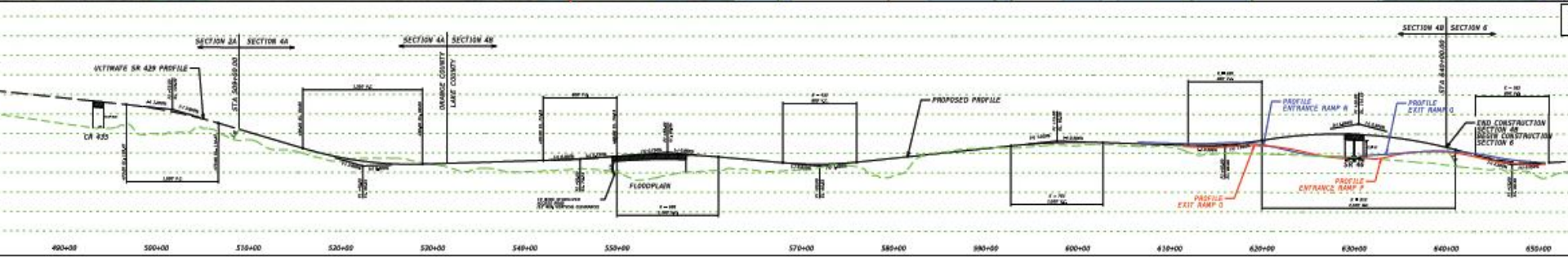
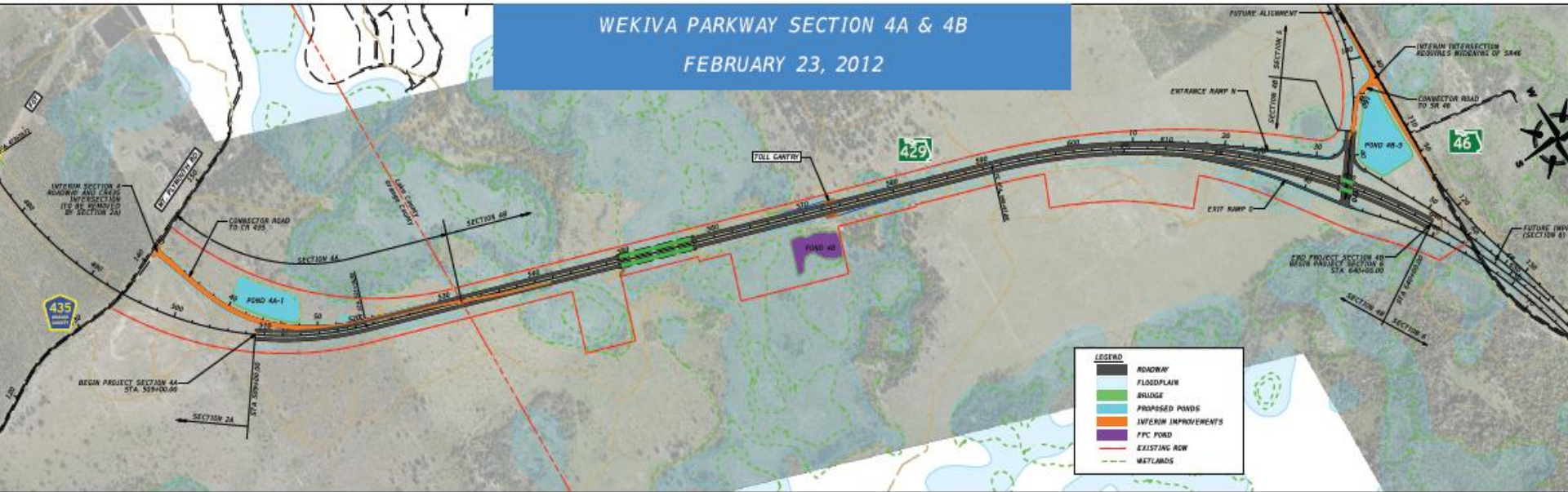


- **Environmental**
 - FONSI – Finding of No Significant Impact- approval anticipated soon
 - FHWA has given the go ahead to advertise Sections 4A & 4B for Design Build Procurement
- **Design**
 - 15% preliminary engineering currently being performed by FDOT.
 - Identifying Right of Way Requirements
 - Value Engineering
 - Risk Assessment
 - Final Design procurement for Sections 3A, 3B, 5, 6, 7A to begin this summer.
- **Construction 4A & 4B**
 - Finalizing concept plans and permits for Sections 4A & 4B.
 - Advertise for Design Build Contractor to begin March 16, 2012
 - Construction anticipated Fall 2012

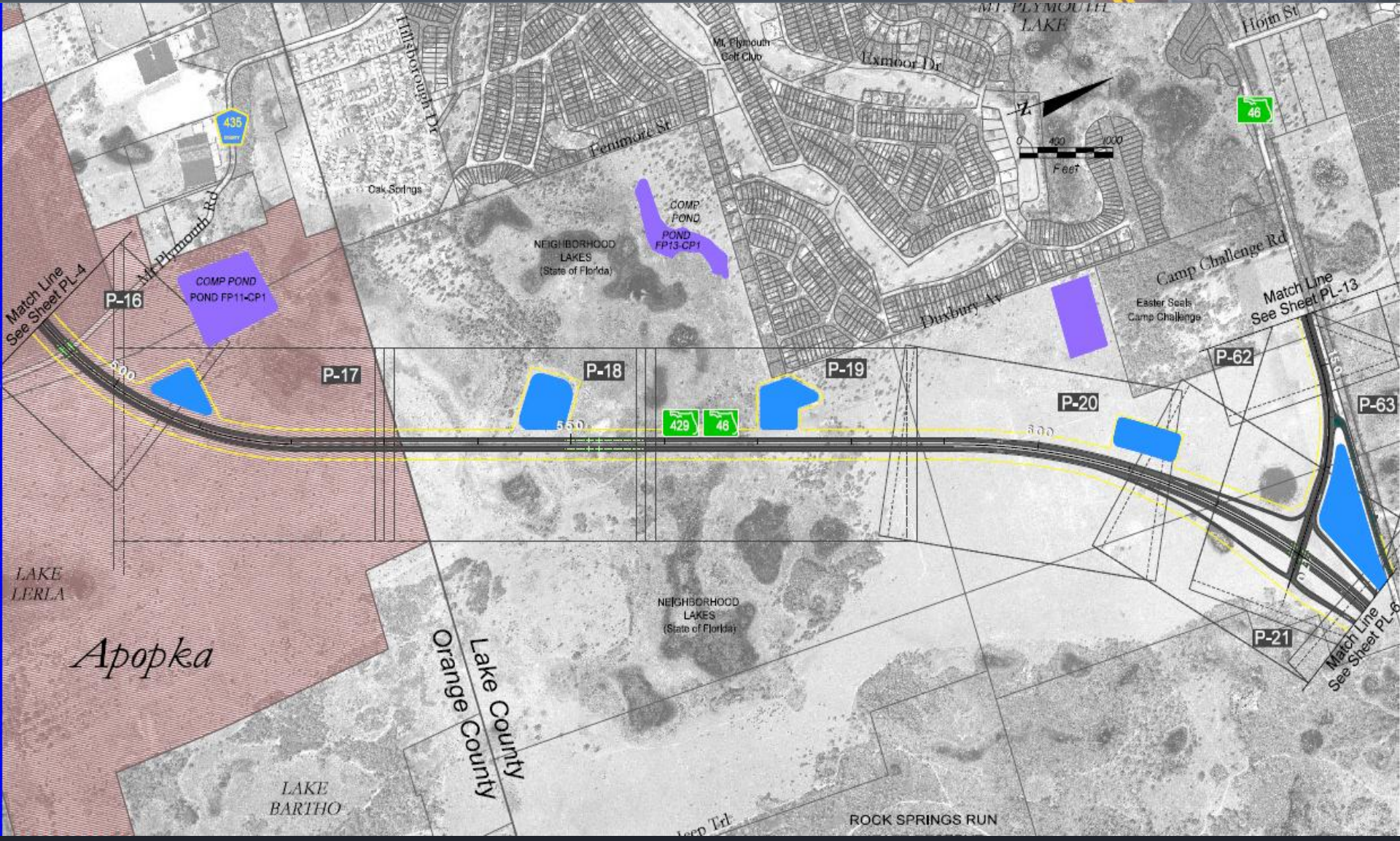
Contract Physical Limits

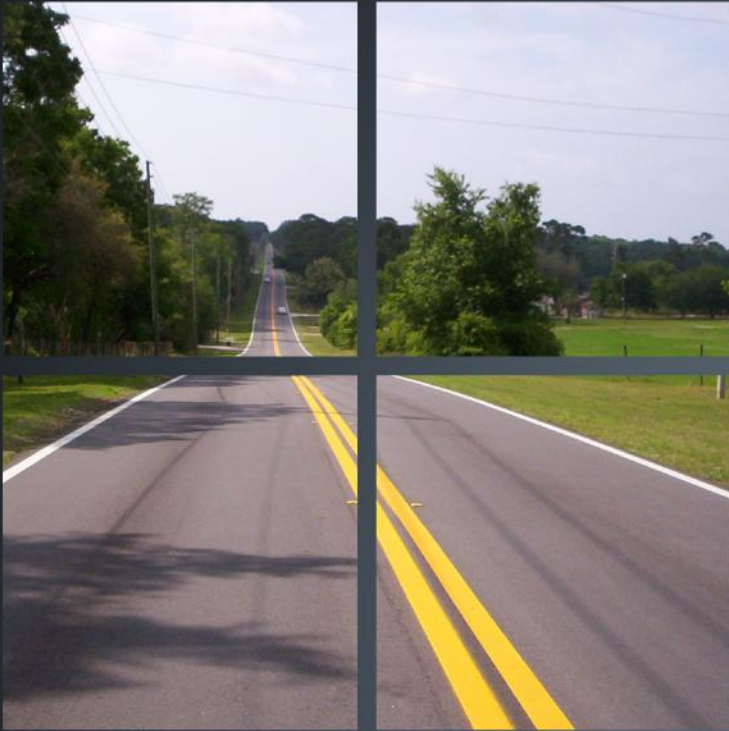


Section 4A & 4B Temporary Connections



Section 4A & 4B Ultimate Connection





QUESTIONS?