



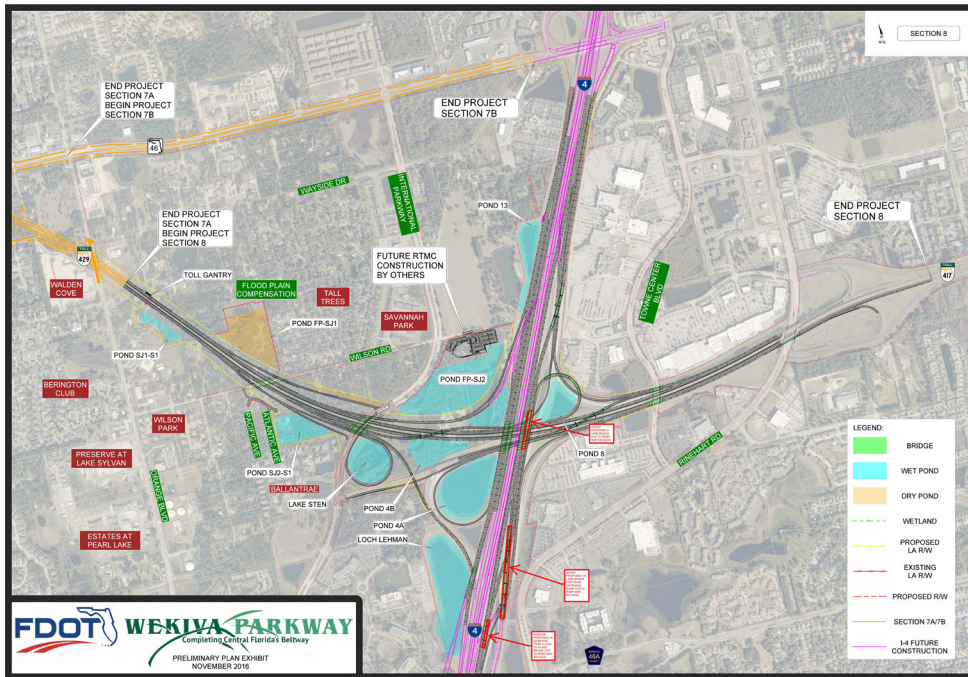
Section 8 Fact Sheet (Seminole County)

Financial Project ID: 240200-4



PROJECT DETAILS

The Florida Department of Transportation, District Five, will build Section 8 of the Wekiva Parkway in Seminole County. This section will connect to Interstate 4 (I-4) and State Road (S.R.) 417, completing Central Florida's beltway.



At a Glance:
Estimated Construction Cost:
\$253.3 million
Construction Start:
Early 2019
Estimated Completion:
2022

Contact Information:
Mary Brooks
Public Information Officer
407-694-5505
info@wekivaparkway.com

Visit
www.wekivaparkway.com
for lane closures and other
project updates.

Section 8 involves building the parkway from Orange Boulevard to east of Rinehart Road in Sanford. This section includes building the general use lanes for the future I-4 Beyond the Ultimate project, from south of S.R. 417 to south of S.R. 46. The parkway will include aesthetic walls and other features. A toll gantry will be built on this section.

Work on this 2.63-mile project will include nearly two dozen bridges, drainage, safety lighting under bridges and at the interchange, utilities and other roadway features.



 
Follow us on
Facebook and Twitter
@WekivaPKWYInfo

WORK ZONE SAFETY

Drivers should be aware that construction will require lane closures, traffic shifts and other changes to travel patterns. There will be night and weekend work on this project.

For the safety of motorists and work crews, speed limits will be strictly enforced during construction. Speeding fines are doubled in work zones when workers are present. Motorists should obey all construction signs and devices, and be alert for large trucks and other equipment entering and leaving the travel lanes.