

PROJECT STATUS

The Wekiva Parkway will be designed and built in sections. Design projects are scheduled to take approximately 18-24 months, followed by right-of-way acquisition and permitting.

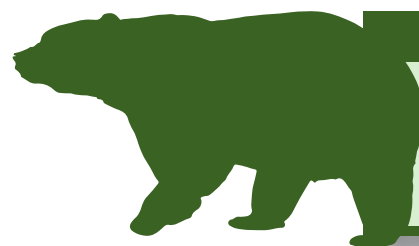
Both the Expressway Authority and the FDOT will continue to communicate with – and solicit input from – the public during the design process. The public can also make comments and view project updates on the project website at www.wekivaparkway.com. Full construction of the beltway's missing link is expected to take at least seven (7) years.

PUBLIC MEETINGS

A public meeting open house to review the preliminary design plans for Section 7A is scheduled for Nov. 12, 2013 from 6:00 p.m. - 8:00 p.m. at The Rock Church of Central Florida, 6641 W. State Road 46, Sanford, FL 32771. For more information log onto www.wekivaparkway.com.

| Responsible Agency | Map Section Number | Project Limits | Status* |
|--------------------|--------------------|---|--|
| OOCEA | 1A | From North of US 441 to North of Ponkan Road | Final design reached 90% Aug. 2013 |
| OOCEA | 1B | From North of Ponkan Road to North of a New Kelly Park Road Interchange | Final design to reach 90% Oct. 2013 |
| OOCEA | 2A | From North of Kelly Park Road and East to CR 435/Mt. Plymouth Road | Final design reached 60% Aug. 2013 |
| OOCEA | 2B | Systems Interchange West of Plymouth Sorrento Road and Ondich Road/Haas Road | Final design reached 60% Sept. 2013 |
| OOCEA | 2C | From East of Round Lake Road to the Lake Co.-Orange Co. Line | Final design to reach 30% Fall 2013 |
| FDOT | 3A | SR 46 From East of Pond Road to East of Round Lake Road | Final design to reach 30% Dec. 2013 |
| FDOT | 3B | SR 46 From West of US 441 to West of Vista View Lane | Final design to reach 60% Nov. 2013 |
| FDOT | 4A | From CR 435/Mt. Plymouth Road to Orange Co./Lake Co. Line | Construction to finish late 2014 |
| FDOT | 4B | From Orange Co./Lake Co. Line to West of Old McDonald Road | Construction to finish late 2014 |
| FDOT | 5 | CR 46A Realignment from North of Arundel Way to SR 46 | Final design to reach 30% Oct. 2013 |
| FDOT | 6 | From West of Old McDonald Road to East of Wekiva River Road | Final design to reach 30% Jan.-Feb. 2014 |
| FDOT | 7A | From East of Wekiva River Road to Orange Boulevard | Final design began June 2013 |
| FDOT | 7B | From West of Center Road to Interstate 4 | Advertise for bids 2016 |
| FDOT | 8 | From Orange Boulevard to East of Rinehart Road including the SR 417/I-4 Interchange | Advertise for bids 2017 |

*Please be advised that schedules are subject to change.



CONTACT INFORMATION

Log onto the project website: www.wekivaparkway.com

Or contact:

Mary Brooks, Public Information Officer
407-694-5505 or info@wekivaparkway.com
Follow us on Facebook and Twitter



PROJECT OVERVIEW

The Wekiva Parkway (State Road 429) will connect to SR 417, completing the beltway around northwest metropolitan Orlando. The planned 25-mile tolled expressway will provide an alternative to Interstate 4, and relieve US 441, SR 46 and other area roads of traffic congestion resulting from growth and travel between Orange, Lake and Seminole Counties. The parkway also will help improve safety and reduce vehicle crash fatalities, particularly on SR 46.

This is a cooperative effort between the Florida Department of Transportation (FDOT), the Orlando-Orange County Expressway Authority and the Florida's Turnpike Enterprise. The Expressway Authority is primarily responsible for the Orange County portion, while the FDOT is responsible for the portions in Lake and Seminole counties.

The parkway will feature all electronic tolling for the greatest customer convenience and to maximize traffic flow. This estimated \$1.7 billion project also includes approximately \$500 million of non-toll road improvements including:

- Widening seven (7) miles of SR 46 to four or six lanes in Lake and Seminole Counties
- Rebuilding the US 441/SR 46 interchange in Mount Dora
- Relocating the CR 46A connection to SR 46 to provide improved wildlife connectivity and additional local road system benefits

PROTECTING THE ENVIRONMENT

Authorized in 2004 by the Wekiva Parkway and Protection Act (Chapter 369, Part III, F.S.), this expressway has been heralded as a shining example for transportation planning through an environmentally sensitive area.

Among the primary goals are to meet regional mobility needs while minimizing impacts to the Wekiva River Basin and improving wildlife habitat connectivity between conservation lands. Development of the expressway has included setting aside more than 3,400 acres of land for conservation. The parkway also will include numerous wildlife bridges, and will be largely elevated to reduce accidents between vehicles and wildlife.

ACCESS IMPROVEMENTS

The parkway will provide access to private properties and a non-tolled option for local trips from the County Road 46A realignment in Lake County to Orange Boulevard (CR 431) in Seminole County. That will be accomplished by a new two-lane, non-tolled service road parallel to the Wekiva Parkway.

PROJECT HISTORY

The FDOT and Expressway Authority collaborated on a Project Development and Environment Study beginning in January 2005. The study engaged thousands of state and local agency staff and community members in developing and evaluating alternatives that meet the region's transportation needs, while also seeking to minimize public and environmental impacts.

The Federal Highway Administration (FHWA) on May 11, 2012 approved the Wekiva Parkway. The FHWA issued a Finding of No Significant Impact (FONSI), accepting the location and design concept. This allowed the project to move forward for design and construction.

CONTACT INFORMATION

Log onto the project website: www.wekivaparkway.com

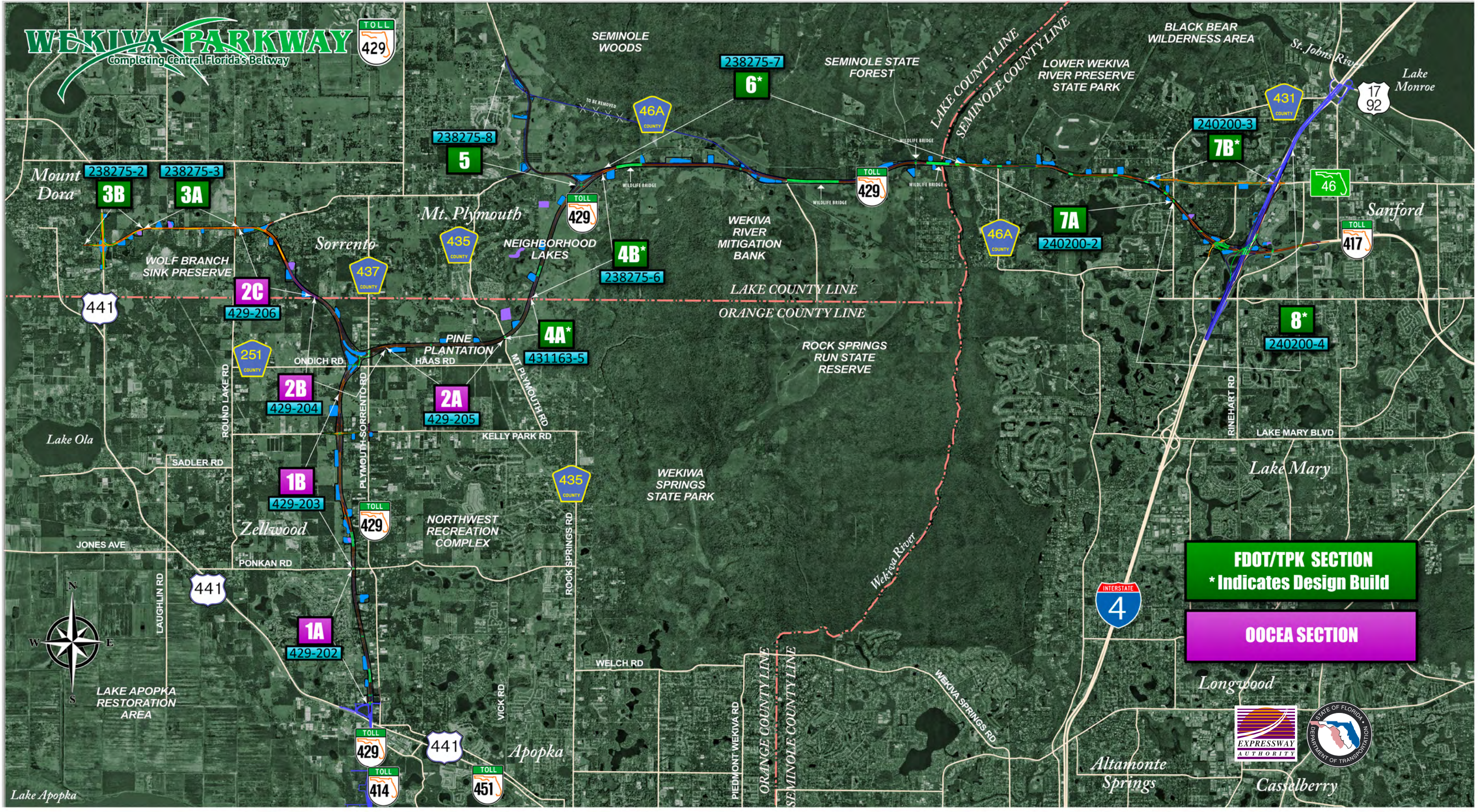
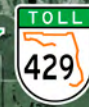
Or contact:

Mary Brooks, Public Information Officer
407-694-5505 or info@wekivaparkway.com
Follow us on Facebook and Twitter



WEKIVA PARKWAY

Completing Central Florida's Beltway



FDOT/TPK SECTION
* Indicates Design Build

OCEA SECTION

