



Responsible Agency	Map Section Number	Project Limits	Construction Schedule*
CFX	1A	From North of US 441 to North of Ponkan Road	June 2015 - 2017
CFX	1B	From North of Ponkan Road to North of New Kelly Park Road Interchange	Aug. 2015 - 2017
CFX	2A	From North of Kelly Park Road and East to CR 435/Mt. Plymouth Road	Aug. 2016 - 2018
CFX	2B	Systems Interchange West of Plymouth Sorrento Road and Ondich Road/Haas Road	Jan. 2016 - 2018
CFX	2C	From East of Round Lake Road to the Lake Co.-Orange Co. Line	May 2016 - 2018
FDOT	3A	SR 46 from West of Vista View Lane to East of Round Lake Road	2017 - 2019
FDOT	3B	SR 46 From West of US 441 to West of Vista View Lane	2017 - 2019
FDOT	4A	From CR 435/Mt. Plymouth Road to Orange Co./Lake Co. Line	Open Jan. 20, 2016
FDOT	4B	From Orange Co./Lake Co. Line to East of Camp Challenge Road	Open Jan. 20, 2016
FDOT	5	CR 46A Realignment From North of Arundel Way to SR 429	2017 - 2019
FDOT	6	From East of Camp Challenge Road to Longwood-Markham Road	2017 - 2020
FDOT	7A	From Longwood-Markham Road to Orange Boulevard	2018 - 2021
FDOT	7B	SR 46 From Orange Boulevard to Wayside Drive	2019 - 2021
FDOT	8	From Orange Boulevard to East of Rinehart Road including the SR 417/I-4 Interchange	2018-2021

*Please be advised that schedules are subject to change.

Multi-Use Trail

The Florida Department of Transportation will build a multi-use trail along portions of Sections 4A, 4B, 5, 6 and 7A in Orange, east Lake and Seminole Counties. The trail will cross over the Wekiva River on a new, high-profile bridge. The Wekiva Parkway trail is planned to tie into a proposed extension of the West Orange Trail in Orange County, the Lake-Wekiva trail in Lake County and a planned extension of the Seminole-Wekiva Trail in Seminole County.

Public Meetings

The agencies continue to schedule public meetings to engage the community as design concludes and more sections move into construction. You can expect more public meetings on various sections in 2017. To find out the latest information about public meetings, project documents and other details, or to make comments, go to WekivaParkway.com. You can also follow the project on Facebook and Twitter for real-time updates.



For more information, visit WekivaParkway.com

Or contact:

Mary Brooks, Public Information Officer
407-694-5505 • info@wekivaparkway.com



Project Overview

The Wekiva Parkway (State Road 429) will connect to SR 417, completing the beltway around Central Florida. The planned 25-mile toll road will provide travel alternatives and relieve US 441, SR 46 and other area roads of traffic congestion in Orange, Lake and Seminole Counties. The parkway also will help improve safety, particularly along SR 46.

This is a cooperative effort between the Florida Department of Transportation (FDOT), the Central Florida Expressway Authority (CFX) and the Florida's Turnpike Enterprise. CFX is primarily responsible for the Orange County portions and a small portion in Lake County, while FDOT is responsible for a small portion in Orange County, as well as portions in the rest of Lake County and Seminole County.

This estimated \$1.6 billion project features approximately \$500 million of non-toll road improvements including:

- Improving SR 46 in Lake and Seminole Counties
- Rebuilding the US 441/SR 46 interchange in Mount Dora
- Moving part of CR 46A out of the state forest to improve wildlife habitat connectivity
- Building a non-tolled service road along the parkway in parts of Lake and Seminole Counties providing property access and an option for local trips

FDOT began construction on its first sections in February 2013. New sections are scheduled to open to traffic every couple of years, with the parkway scheduled to be finished at the end of 2021. Schedules are subject to change on such a major transportation improvement.



For more information, visit WekivaParkway.com

Or contact:

Mary Brooks, Public Information Officer
407-694-5505 • info@wekivaparkway.com



Protecting the Environment

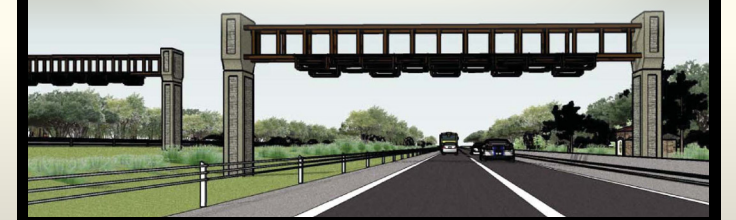
Authorized by the 2004 Wekiva Parkway and Protection Act (Chapter 369, Part III, F.S.), this expressway has been heralded as a shining example for transportation planning through an environmentally sensitive area.

Among the primary goals are to meet regional mobility needs while minimizing impacts to the Wekiva River Basin and surrounding natural habitat. Parkway development has included purchasing more than 3,400 acres of land for conservation. The parkway's wildlife bridges will provide safe passage between state-owned lands. The parkway will be largely elevated to reduce accidents between vehicles and wildlife.

All Electronic Tolling

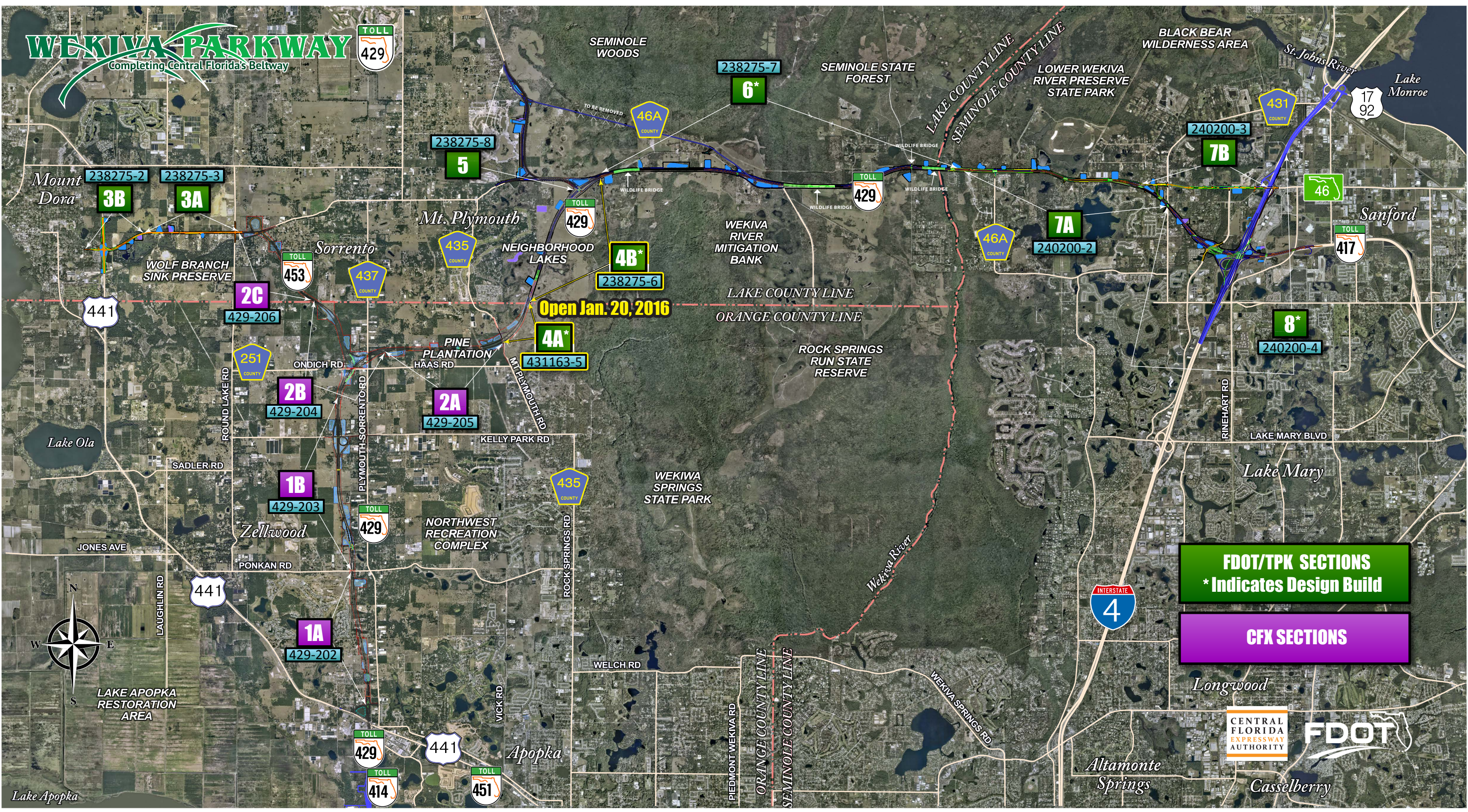
The Wekiva Parkway is the first expressway in Central Florida to feature All Electronic Tolling (AET). AET provides the greatest convenience, allowing customers to pay their tolls at safe highway and ramp speeds, without having to slow down or stop. There will be no toll plazas. Both FDOT and CFX will make accommodations for those who do not have an E-PASS or SunPASS transponder.

For more information on AET go to the Florida's Turnpike Enterprise website at www.floridasturnpike.com



WEKIVA PARKWAY

Completing Central Florida's Beltway



Open Jan. 20, 2016

FDOT/TPK SECTIONS
* Indicates Design Build

CFX SECTIONS

