



Responsible Agency	Map Section Number	Project Limits	Construction Schedule*
CFX	1A	From North of U.S. 441 to North of Ponkan Road	Open July 27, 2017
CFX	1B	From North of Ponkan Road to North of New Kelly Park Road Interchange	Open July 27, 2017
CFX	2A	From North of Kelly Park Road and East to C.R. 435/Mt. Plymouth Road	Open Mar. 31, 2018
CFX	2B	Systems Interchange West of Plymouth Sorrento Road and Ondich Road/Haas Road	Open Mar. 31, 2018
CFX	2C	From East of Round Lake Road to the Lake Co.-Orange Co. Line	Open Mar. 31, 2018
FDOT	3A	S.R. 46 from West of Vista View Lane to East of Round Lake Road	Open Nov. 30, 2020
FDOT	3B	S.R. 46 From West of U.S. 441 to West of Vista View Lane	Open Nov. 30, 2020
FDOT	4A	From C.R. 435/Mt. Plymouth Road to Orange Co./Lake Co. Line	Open Jan. 20, 2016
FDOT	4B	From Orange Co./Lake Co. Line to East of Camp Challenge Road	Open Jan. 20, 2016
FDOT	5	C.R. 46A Realignment From North of Arundel Way to S.R. 429	Open Oct. 31, 2019
FDOT	6	From East of Camp Challenge Road to Longwood-Markham Road	Oct. 2017-2022
FDOT	7A	From Longwood-Markham Road to Orange Boulevard	Apr. 2018-2022
FDOT	7B	S.R. 46 from Orange Boulevard to Wayside Drive-Oregon Street	July 2019-2021
FDOT	8	From Orange Boulevard to East of Rinehart Road including the S.R. 417/I-4 Interchange	Dec. 2018-2023

*Please be advised that schedules are subject to change.

Multi-Use Trail

The FDOT is building a multi-use trail. The trail will cross over the Wekiva River on a new, high-span bridge. The Wekiva Parkway trail will connect to a proposed extension of the West Orange Trail in Orange County, the Lake-Wekiva trail in Lake County and an extension of the Seminole-Wekiva Trail in Seminole County.

Project Information and Updates

For the latest information on project progress, roadway lane closures, detours, past public meetings and other information, go to WekivaParkway.com. To sign up for email blasts, send a request to info@wekivaparkway.com or call (407) 710-5610. You can also follow the project on Facebook or Twitter.



Visit us online at: www.WekivaParkway.com



For more information, visit WekivaParkway.com

Or contact:

Community Outreach Team

407-710-5610 • info@wekivaparkway.com

Find us on facebook at: [Fb.com/WekivaParkway](https://www.facebook.com/WekivaParkway)

Tweet us at: [@WekivaPKWYinfo](https://twitter.com/WekivaPKWYinfo)



Project Overview

The Wekiva Parkway (State Road 429) will connect to State Road (S.R.) 417 and Interstate 4, completing Central Florida's beltway while also helping to protect the natural resources surrounding the Wekiva River. The planned 25-mile toll road is providing travel alternatives and relieving U.S. 441, S.R. 46 and other area roads of traffic congestion in Orange, Lake and Seminole counties. The parkway also will help improve safety, particularly along S.R. 46.

This is a cooperative effort between the Florida Department of Transportation (FDOT), the Central Florida Expressway Authority (CFX) and the Florida's Turnpike Enterprise. CFX is primarily responsible for the Orange County portions and a small portion in Lake County, while FDOT is responsible for a small portion in Orange County, as well as portions in the rest of Lake County and Seminole County.

This estimated \$1.6 billion project features approximately \$500 million of non-tolled road improvements including:

- Improving S.R. 46 in Lake and Seminole counties
- Rebuilding the U.S. 441/S.R. 46 interchange in Mount Dora
- Moving part of County Road 46A (C.R. 46A) out of the state forest to improve wildlife habitat connectivity
- Building a non-tolled service road along the parkway in parts of Lake and Seminole counties providing property access and an option for local trips

FDOT opened its first sections in 2016. By the spring of 2018, CFX had opened its 10 miles of the parkway. The rest of the parkway is scheduled to open by early 2023. Schedules are subject to change on such a major transportation improvement.

Visit us online at: www.WekivaParkway.com



For more information, visit WekivaParkway.com

Or contact:

Community Outreach Team

407-710-5610 • info@wekivaparkway.com

Find us on facebook at: [Fb.com/WekivaParkway](https://www.facebook.com/WekivaParkway)

Tweet us at: [@WekivaPKWYinfo](https://twitter.com/WekivaPKWYinfo)

Protecting the Environment

Authorized by the 2004 Wekiva Parkway and Protection Act (Chapter 369, Part III, F.S.), this expressway has been heralded as a shining example for transportation planning through an environmentally sensitive area.

Among the primary goals are to meet regional mobility needs while minimizing impacts to the Wekiva River, a National Wild and Scenic River, and surrounding habitat. Parkway development has included: purchasing more than 3,400 acres of land for conservation; building 1.5 miles of wildlife bridges between state-owned lands; and largely elevating the parkway to reduce accidents between vehicles and wildlife. Wildlife jump-outs, special fencing and bat houses are additional protections along the parkway.

All Electronic Tolling

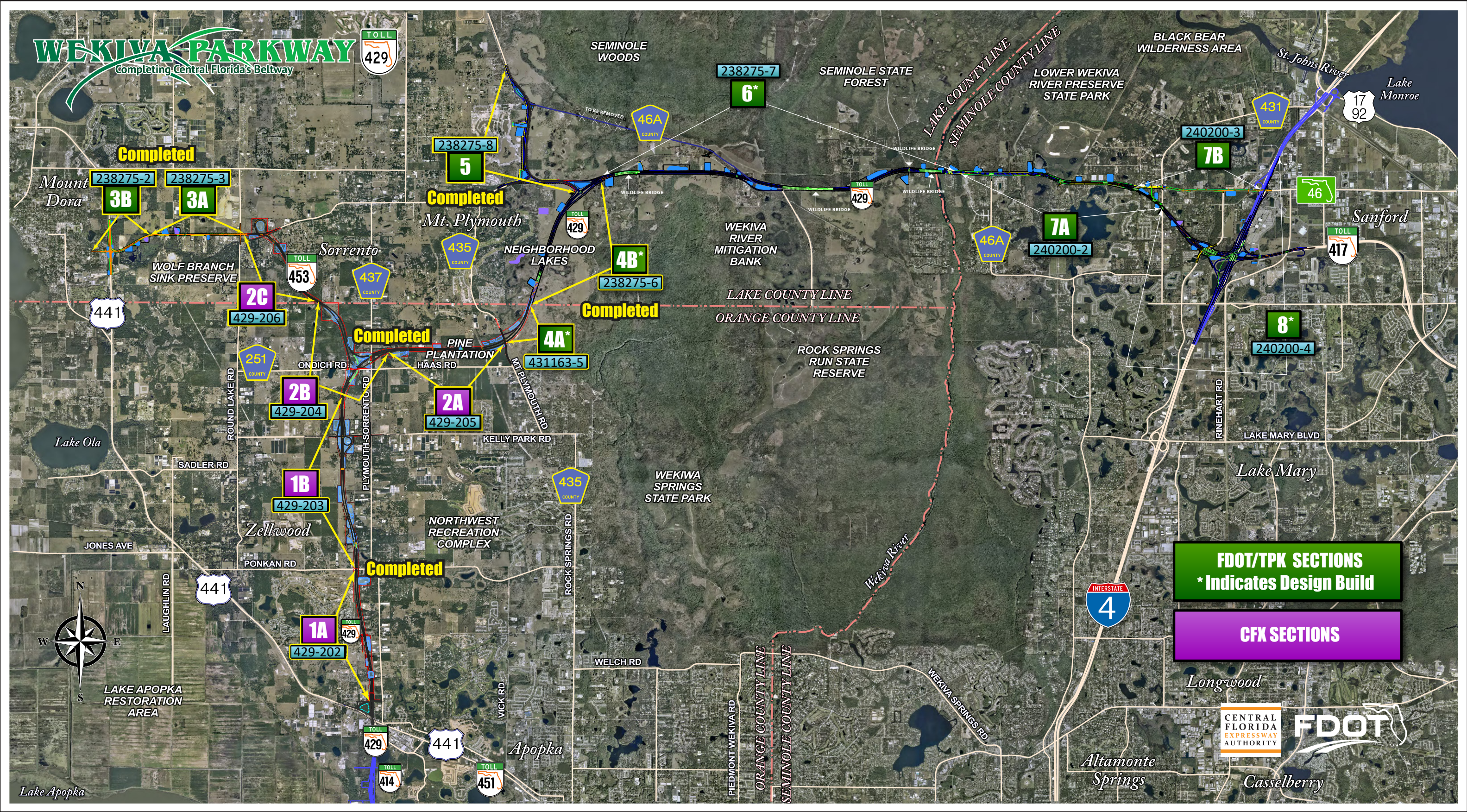
The Wekiva Parkway is the first expressway in Central Florida to feature All Electronic Tolling (AET). AET provides the greatest convenience, allowing customers to pay their tolls at safe highway and ramp speeds without having to slow down or stop. There are no toll plazas. Both FDOT and CFX have programs for those who do not have an E-PASS or SunPASS transponder.

For more information on AET go to the Florida's Turnpike Enterprise website at www.floridasturnpike.com



WEKIVA PARKWAY

Completing Central Florida's Beltway



FDOT/TPK SECTIONS
* Indicates Design Build

CFX SECTIONS



Lake Apopka

Altamonte Springs

Casselberry

Apopka

Longwood

Lake Mary

Sanford

Lake Monroe

SEMINOLE WOODS

SEMINOLE STATE FOREST

LOWER WEKIWA RIVER PRESERVE STATE PARK

BLACK BEAR WILDERNESS AREA

WEKIWA RIVER MITIGATION BANK

LAKE COUNTY LINE
ORANGE COUNTY LINE

ROCK SPRINGS RUN STATE RESERVE

WEKIWA SPRINGS STATE PARK

NORTHWEST RECREATION COMPLEX

WOLF BRANCH SINK PRESERVE

Lake Ola

441

441

429

441

451

435

435

238275-8

238275-7

240200-3

240200-2

240200-4

429-206

429-204

429-203

429-202

431163-5

238275-6

238275-2

238275-3

3B

3A

2C

2B

1B

1A

2A

4A*

4B*

7A

7B

8*

46A

46A

431

46

417

17 92

4



LAKE APOPKA RESTORATION AREA

Mount Dora

Mt. Plymouth

NEIGHBORHOOD LAKES

Sorrento

Zellwood

Apopka

Altamonte Springs

Casselberry

Longwood

Lake Mary

Sanford

Lake Monroe

SEMINOLE WOODS

SEMINOLE STATE FOREST

LOWER WEKIWA RIVER PRESERVE STATE PARK

BLACK BEAR WILDERNESS AREA

WEKIWA RIVER MITIGATION BANK

LAKE COUNTY LINE
ORANGE COUNTY LINE

ROCK SPRINGS RUN STATE RESERVE

WEKIWA SPRINGS STATE PARK

NORTHWEST RECREATION COMPLEX

WOLF BRANCH SINK PRESERVE

Lake Ola

441

441

429

441

451

435

435

238275-8

238275-7

240200-3

240200-2

240200-4

429-206

429-204

429-203

429-202

431163-5

238275-6

238275-2

238275-3

3B

3A

2C

2B

1B

1A

2A

4A*

4B*

7A

7B

8*

46A

46A

431

46

417

17 92

4



LAKE APOPKA RESTORATION AREA

Mount Dora

Mt. Plymouth

NEIGHBORHOOD LAKES

Sorrento

Zellwood

Apopka

Altamonte Springs

Casselberry

Longwood

Lake Mary

Sanford

Lake Monroe