



## A Regional Transportation Solution

Zellwood Station HOA  
Sept. 18, 2014



# WEKIVA PARKWAY



**LEGEND**

- Existing OCEA System
- Future OCEA Segments (Under Design)
- | OCEA Toll Facility
- Florida's Turnpike System
- - - Future Florida's Turnpike Segments
- Wekiva Parkway PD&E
- Under Construction



## Project Description

- **\$1.6 Billion Completion of Central Florida's Beltway**
- **25-mile Toll Road**
- **Non-Toll Road Improvements:**
  - **Widening SR 46 in Lake & Seminole Counties**
  - **Rebuilding the US 441/SR 46 Interchange in Mount Dora**
  - **Relocating CR 46A to Improve Wildlife Connectivity**
  - **Parallel Service Roads in East Lake & Seminole Counties**
- **Multi-use Trail (Parts of East Lake & Seminole Counties)**

**WEKIIVA PARKWAY**



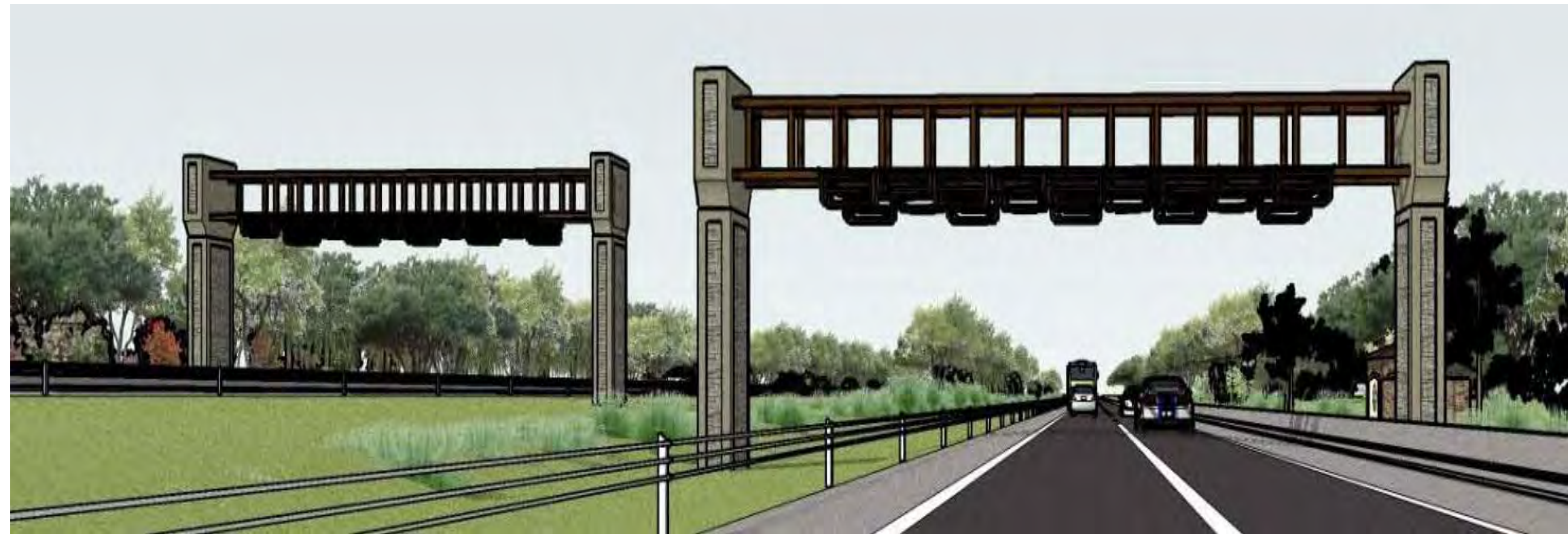
## Protecting Nature

- **Wekiva River: Outstanding Florida Water & National Wild & Scenic River**
- **Authorized by the 2004 Wekiva Parkway and Protection Act**
  - **Setting Aside More than 3,400 Acres for Conservation**
  - **Largely Elevated to Reduce Accidents Between Vehicles & Wildlife**
  - **Several Wildlife Bridges**
  - **Few Interchanges (Reduce Development)**



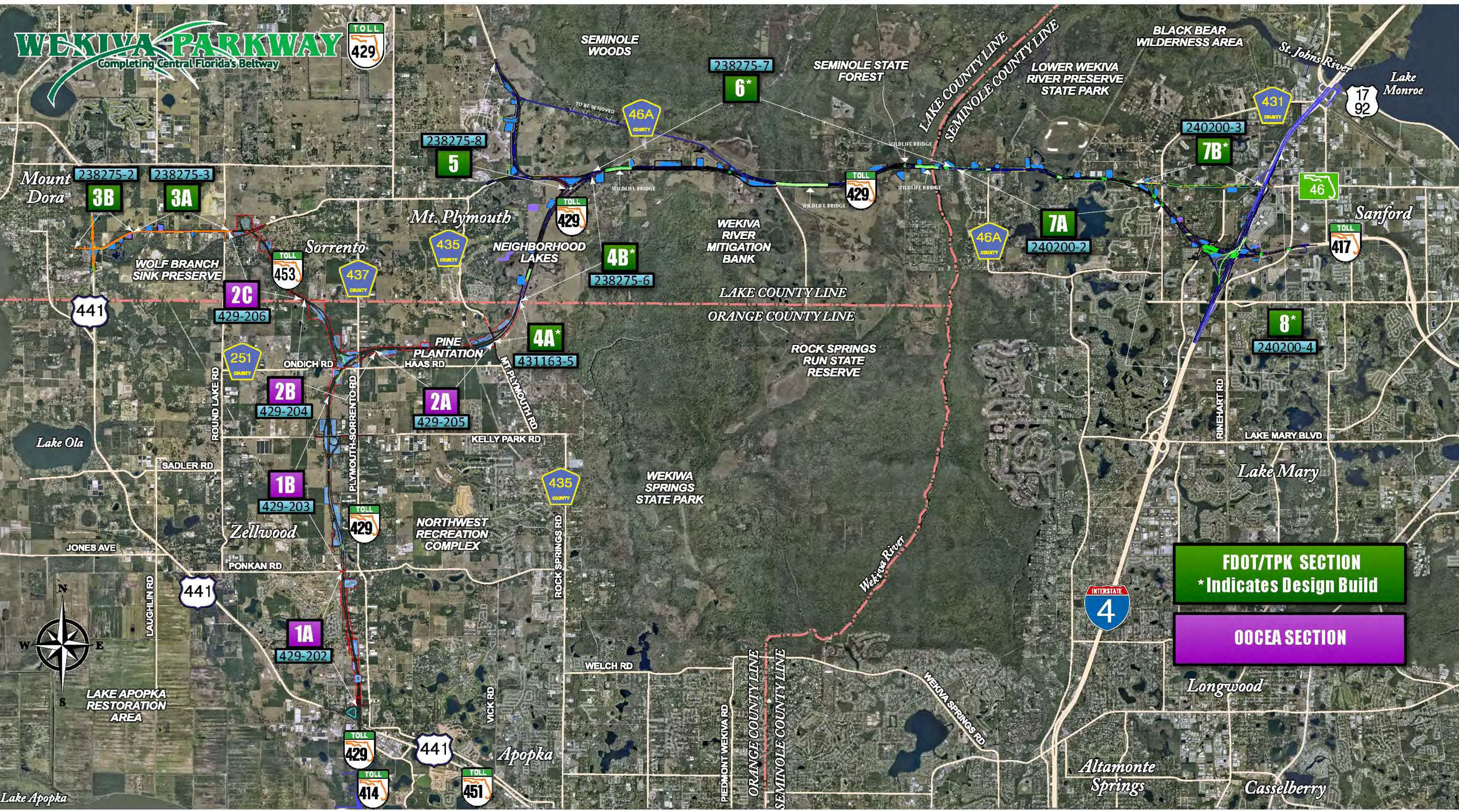
# All Electronic Tolling (AET)

- First in Central Florida
- No Toll Plazas – No Cash
- Enhances Safety
- Maximizes Convenience
- AET Info on Website
- Reduces Noise & Pollution
- Improves Mobility
- Saves Money



# WEKIVA PARKWAY

Completing Central Florida's Beltway



**FDOT/TPK SECTION**  
\* Indicates Design Build

**OOCEA SECTION**



# Design Status

SECTION	MILESTONE	SUBMITTAL SCHEDULE
1A	100%	July 2014
1B	100%	June 2014
2A	100%	June 2014
2B	100%	October 2014
2C	100%	January 2015
3A	90%	September 2014
3B	90%	October 2014
5	90%	November 2014
6	60%	November 2014
7A	60%	November 2014
7B	Design Starts 2016	
8	Design-Build	







# Central Florida Expressway Authority Sections



# Pier Option

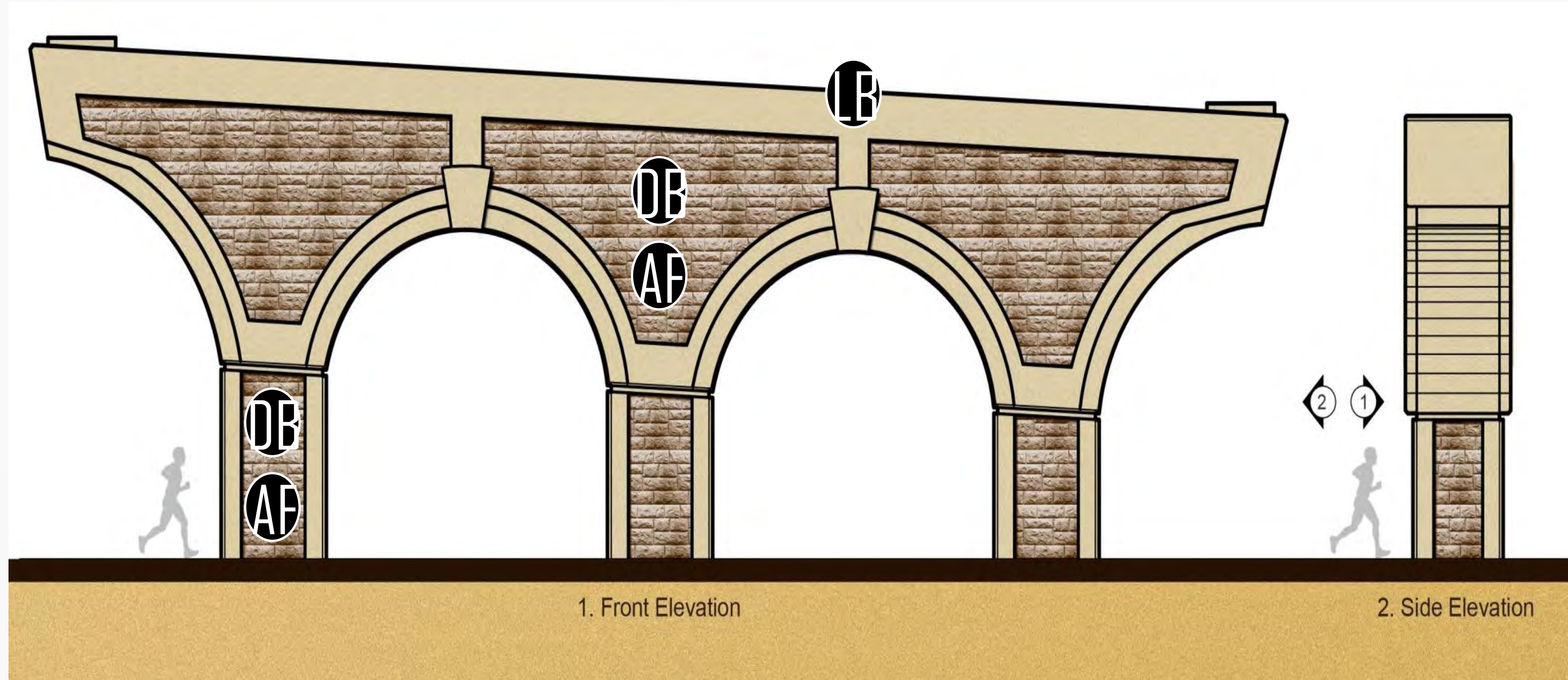
## Standard Colors



Light Brown  
Dark Green



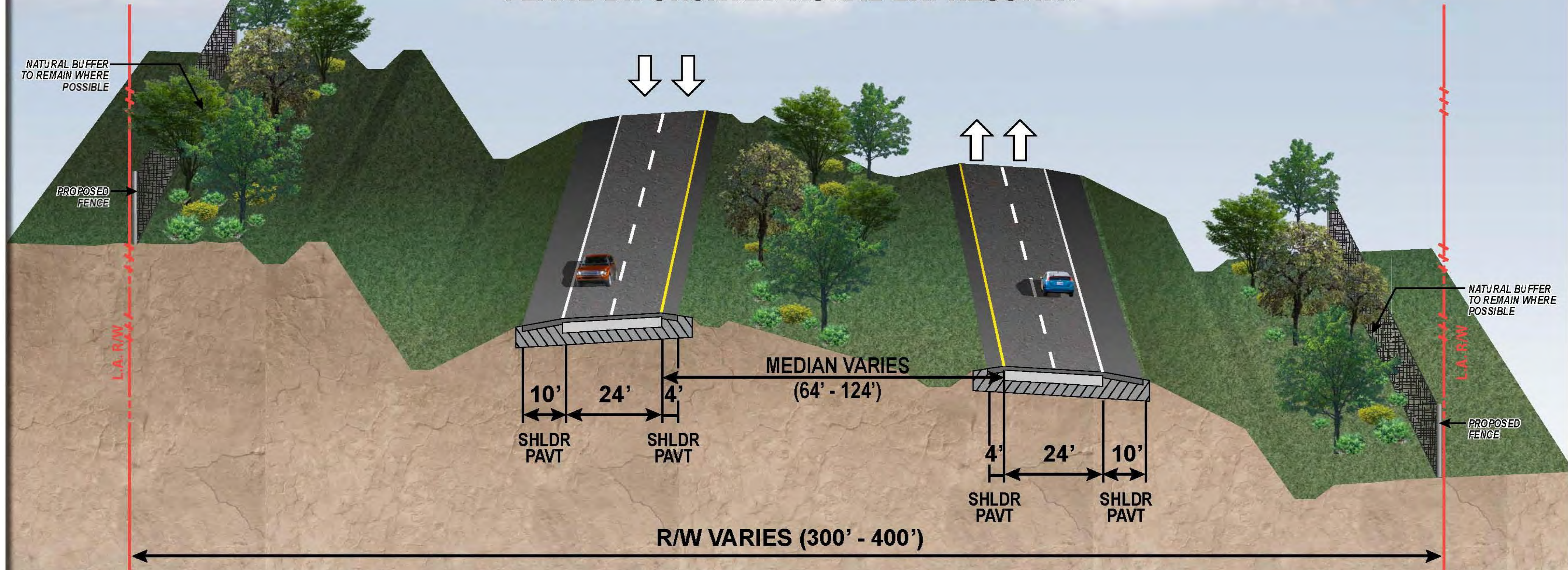
Dark Brown  
Ashlar Formline



# WEKIVA PARKWAY

## TYPICAL SECTION

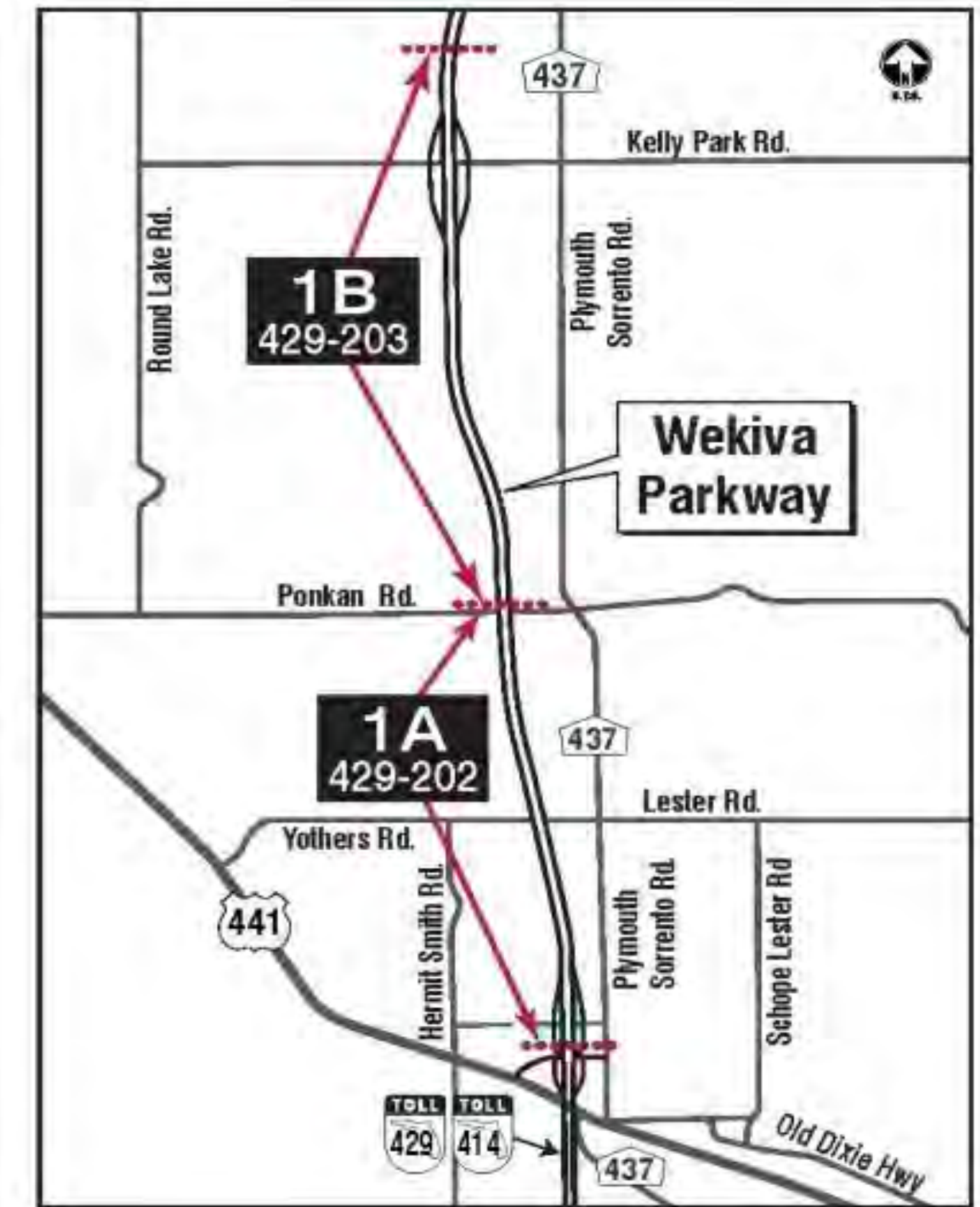
### SR 429 (WEKIVA PARKWAY) 4-LANE BIFURCATED RURAL EXPRESSWAY



NOTE: PRELIMINARY, SUBJECT TO CHANGE

# Sections 1A & 1B Update

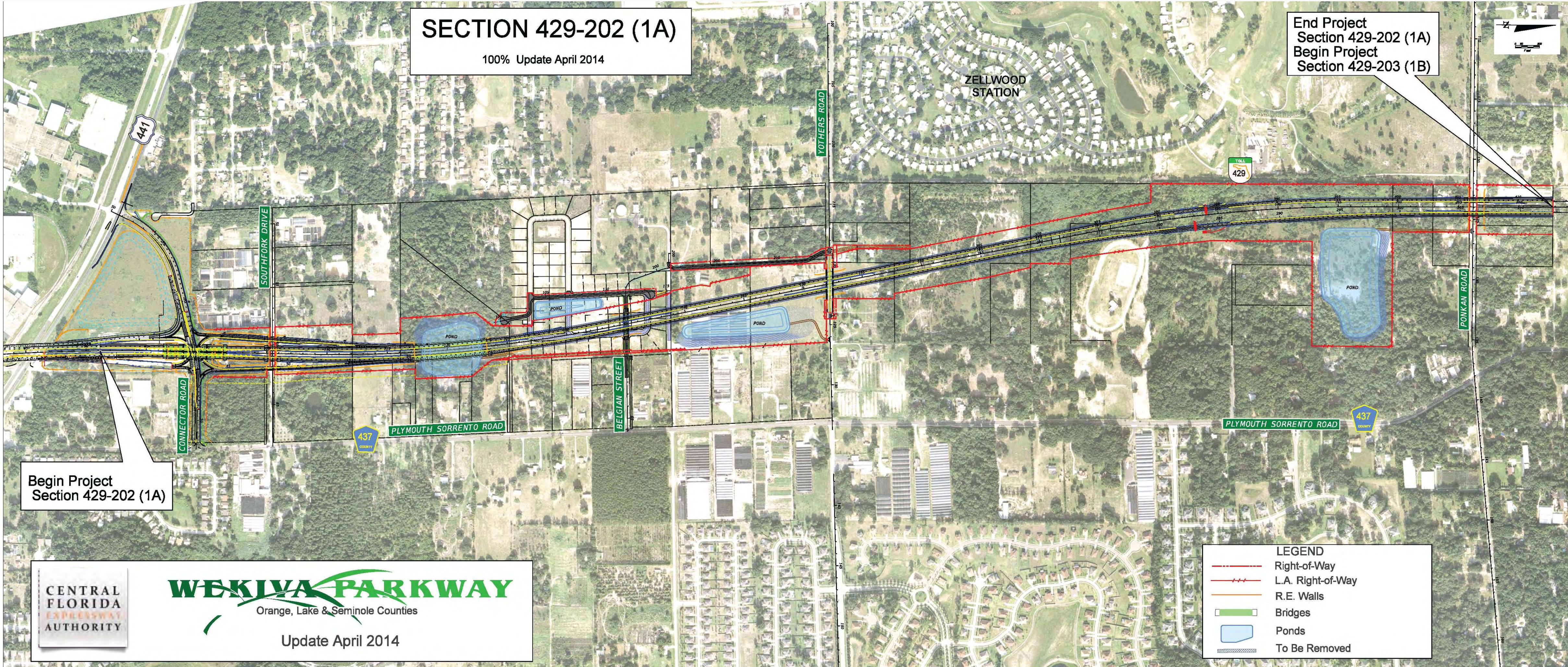
- ✓ Design Complete
- ✓ CEI Procurement Underway
- ✓ Ad for Contractor Bids – Late 2014
- ✓ Construction Start: First Quarter 2015
- ✓ Pre-Construction Community Open House
  - Thursday, Sept. 25, 2014, 5:30 p.m. – 7:30 p.m.
  - Apopka High School (Cafeteria)



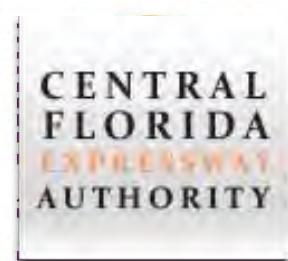
# Section 1A

**SECTION 429-202 (1A)**  
100% Update April 2014

End Project  
Section 429-202 (1A)  
Begin Project  
Section 429-203 (1B)



Begin Project  
Section 429-202 (1A)



**WEKIVA PARKWAY**  
Orange, Lake & Seminole Counties

Update April 2014

LEGEND	
	Right-of-Way
	L.A. Right-of-Way
	R.E. Walls
	Bridges
	Ponds
	To Be Removed

# Section 1 Construction Impacts

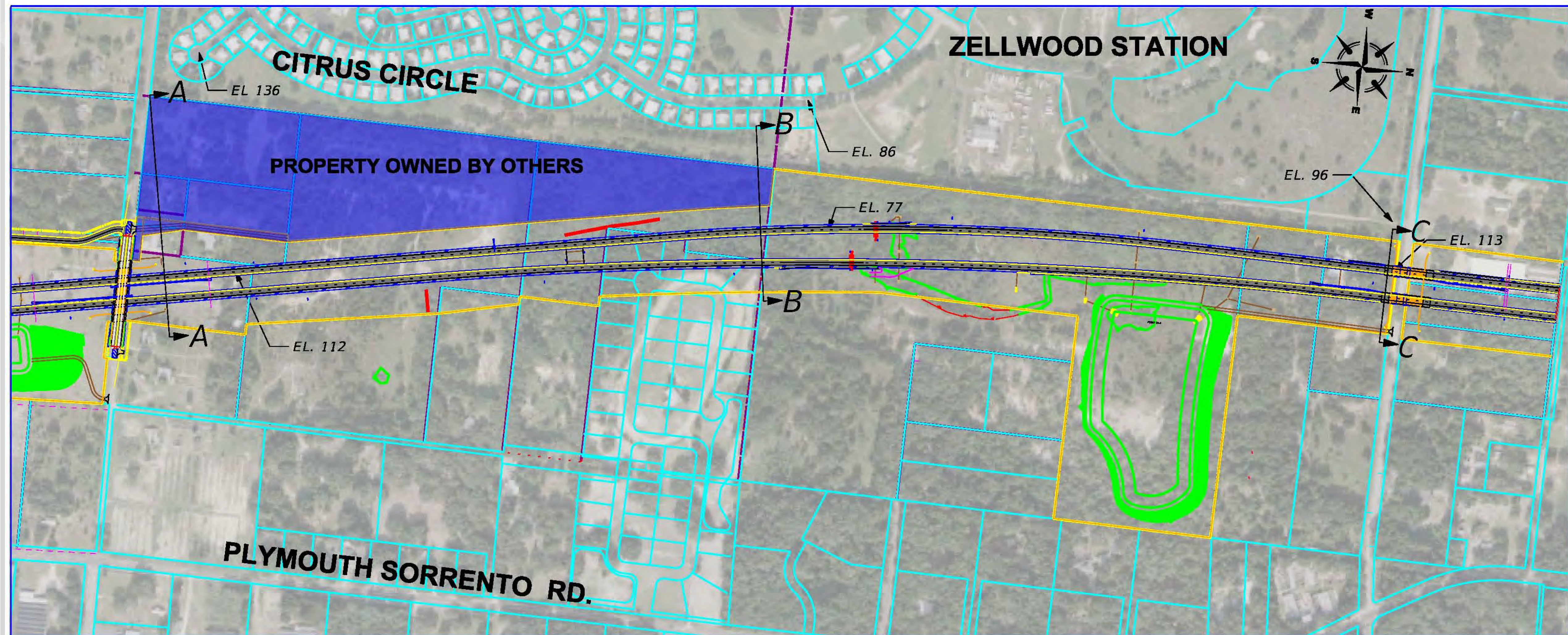
## - Local Roads

### Parkway Depressed

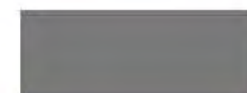
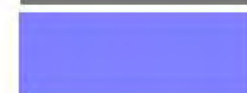
- Under Belgian St. & Yothers Rd.
- Similar: SR 414 Under Marden Rd.



# Section 1A – Zellwood Station Area



**LEGEND**

-  NEW / RECONSTRUCTED ROADWAY
-  PROPERTY OWNED BY OTHERS

**HNTB**

610 CRESCENT EXECUTIVE CT, SUITE 400  
LAKE MARY, FL 32746  
(407) 805-0355 CERT. OF AUTH. NO. 6500

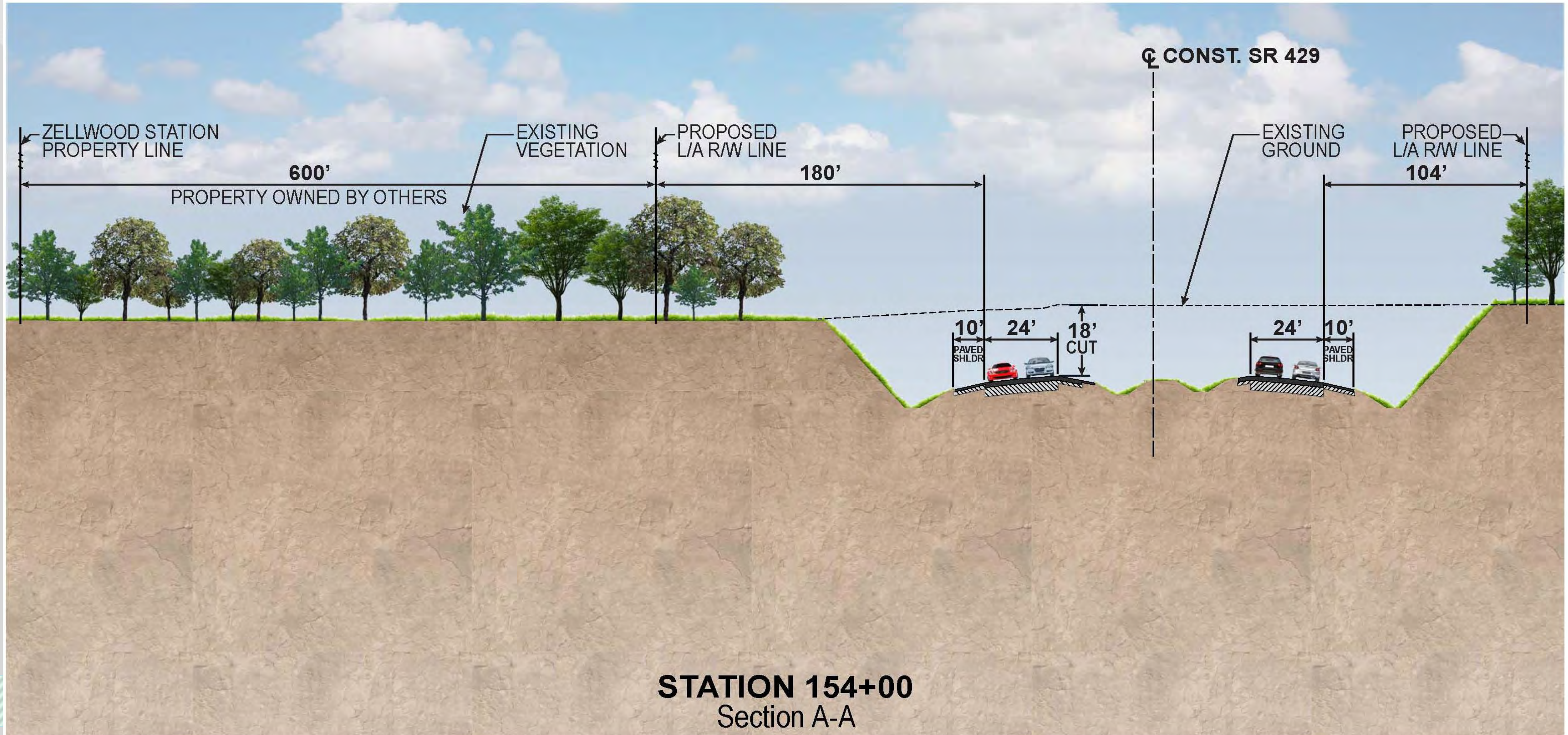
CENTRAL FLORIDA  
EXPRESSWAY AUTHORITY

PROJ. NO. 429-202

**WEKIVA PARKWAY  
SECTION 1A - 8/2014**

# Section 1A – Zellwood Station

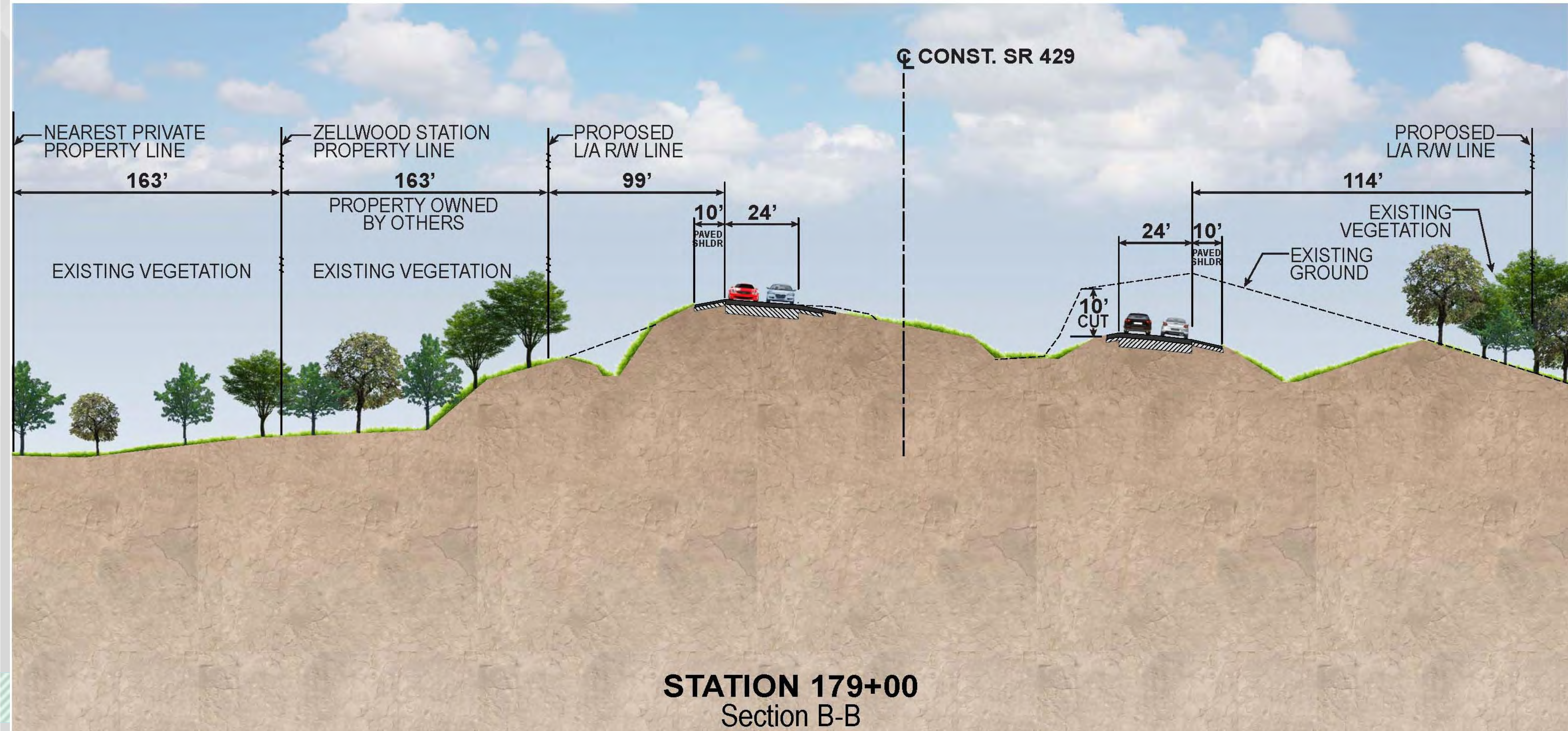
## Typical Section A-A





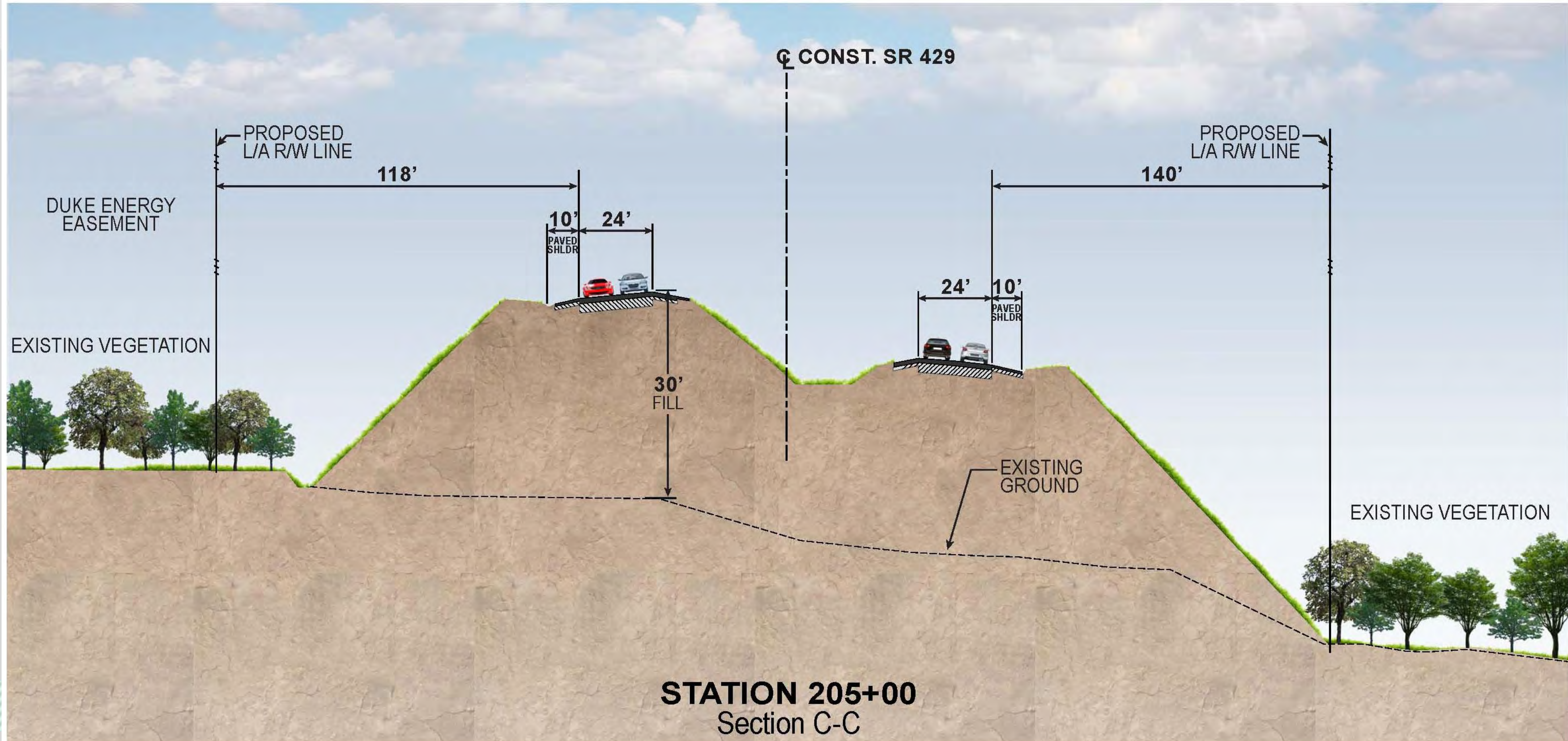
# Section 1A – Zellwood Station

## Typical Section B-B



# Section 1A – Zellwood Station

## Typical Section C-C



# Section 1B

## SECTION 429-203 (1B)

90% Update October 2013 Subject to Change

Begin Project  
Section 429-203 (1B)  
End Project  
Section 429-202 (1A)

End Project  
Section 429-203 (1B)  
Begin Project  
Section 429-204 (2B)

CENTRAL  
FLORIDA  
EXPRESSWAY  
AUTHORITY

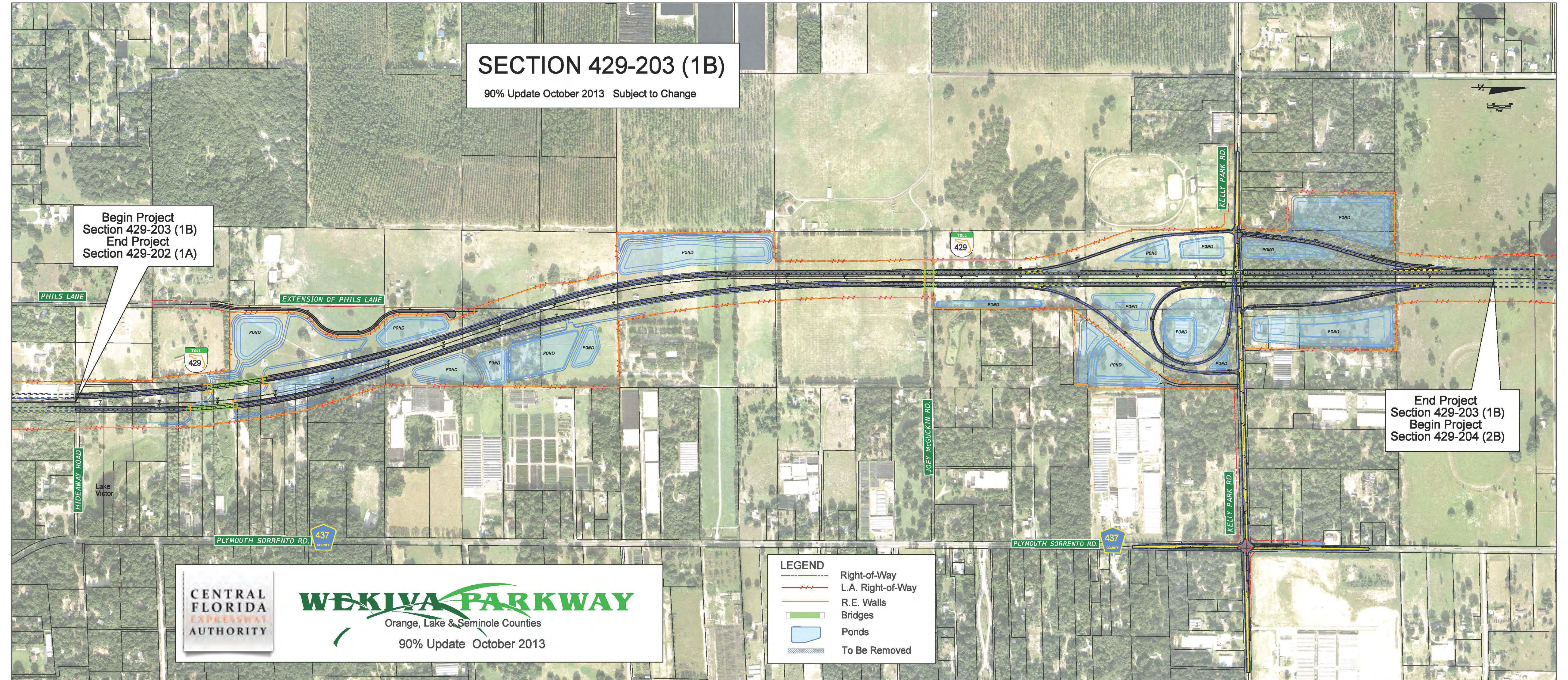
**WEKIWA PARKWAY**

Orange, Lake & Seminole Counties

90% Update October 2013

**LEGEND**

-  Right-of-Way
-  L.A. Right-of-Way
-  R.E. Walls
-  Bridges
-  Ponds
-  To Be Removed



# Construction Impacts

## Affected Side Streets:

Belgian St.  
Southfork Dr.  
Kiowa Ave.  
Hideaway Rd.  
Phils Ln.

Yothers Rd.  
Plymouth Sorrento Rd.  
Ponkan Rd.  
Kelly Park Rd.



Construction Vehicles  
Detours  
Noise  
Dust  
Night Work

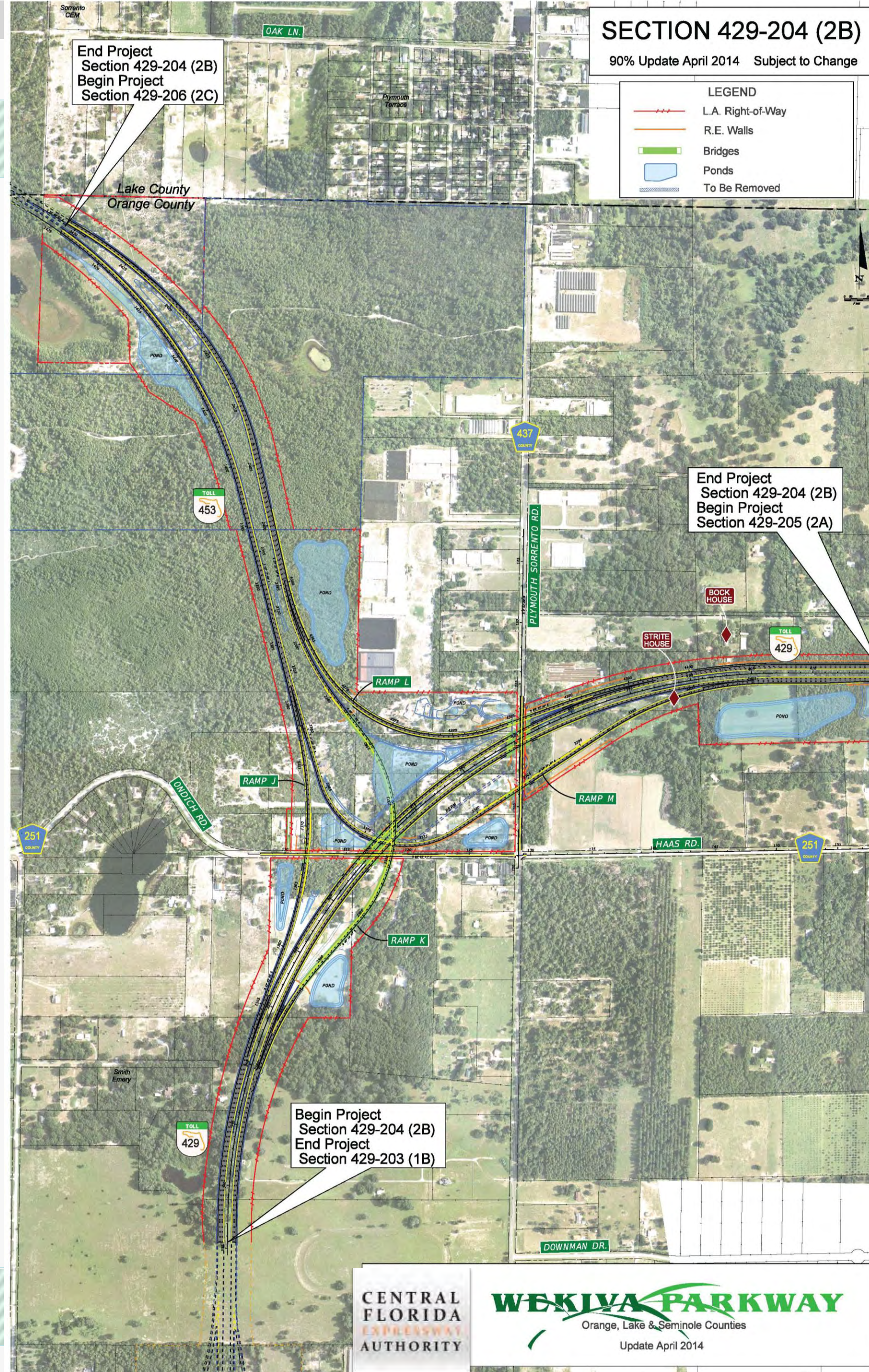
Road & Lane Closures  
Utility Work  
Vibration  
Tree Clearing



- No Pile Driving 10 p.m. – 6 a.m.

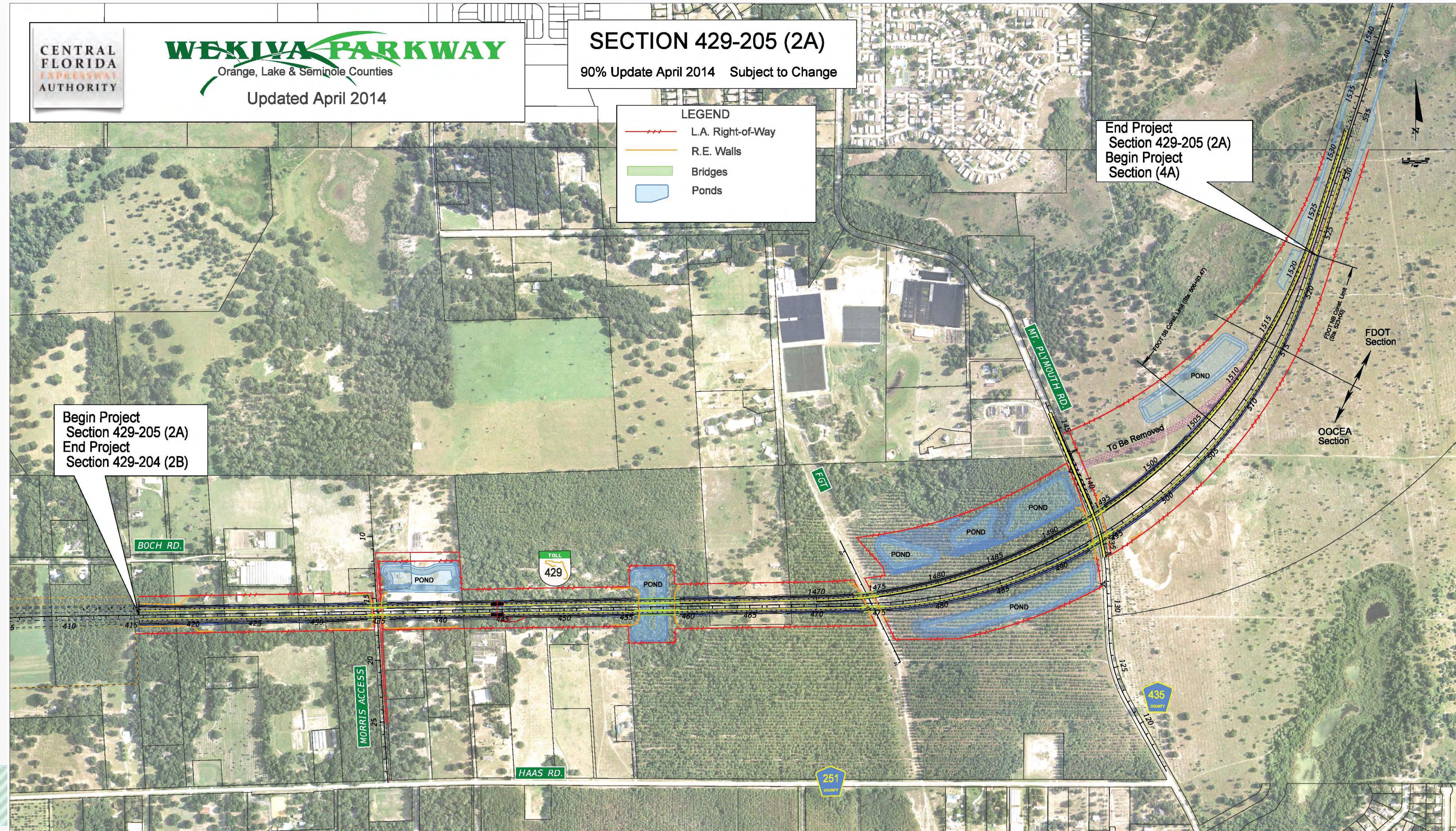
# Section 2B

- Oct. – 100% Design Complete
- 2017 – Construction Start



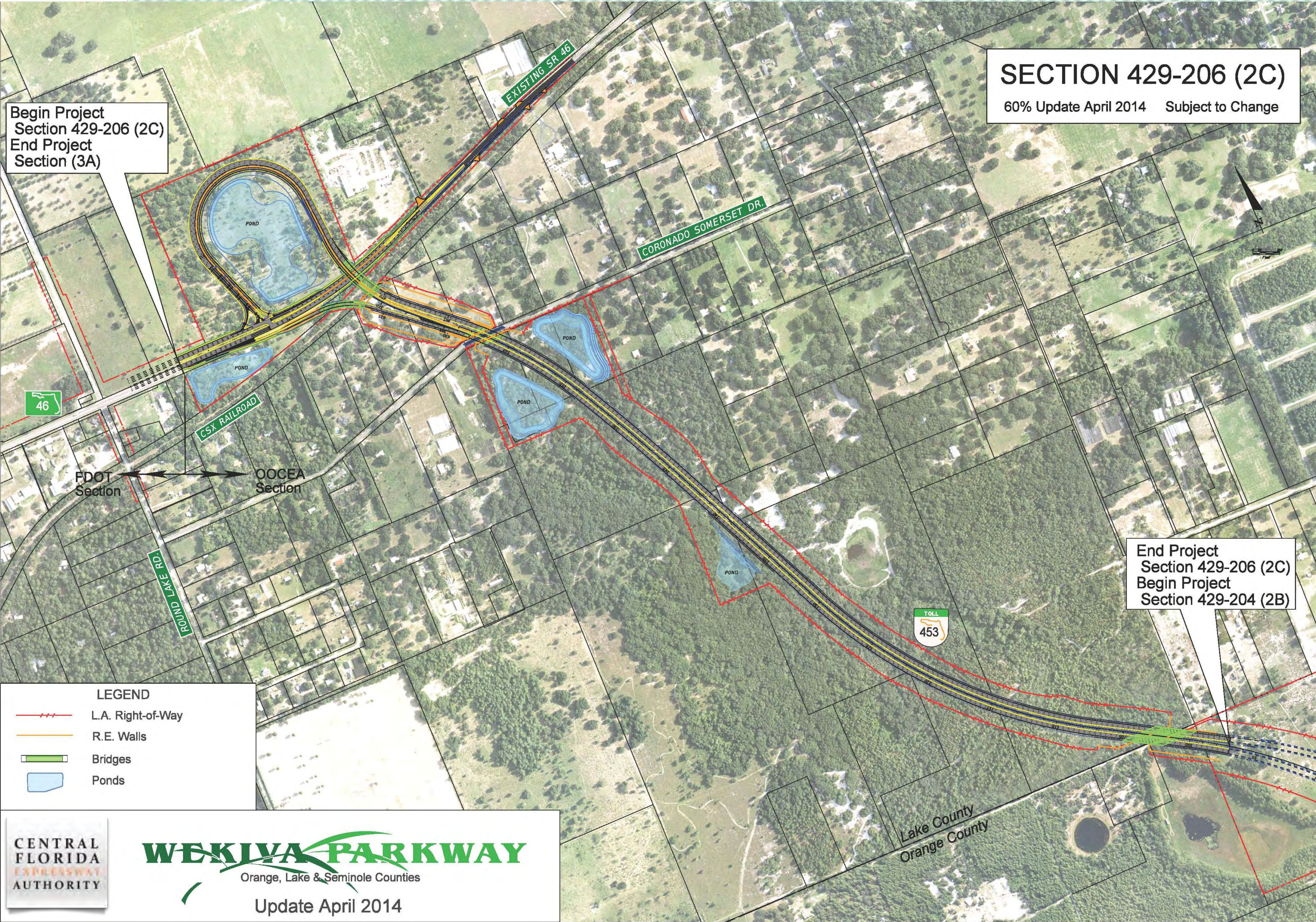
# Section 2A

- June: Design 100% Complete
- 2017: Start Construction



# Section 2C

- Jan. – 100% Design Complete
- 2017 – Start Construction



# Section 2C - Pond Contours & Aesthetics

PRELIMINARY & SUBJECT TO  
CHANGE  
MARCH 2014





# FDOT Sections

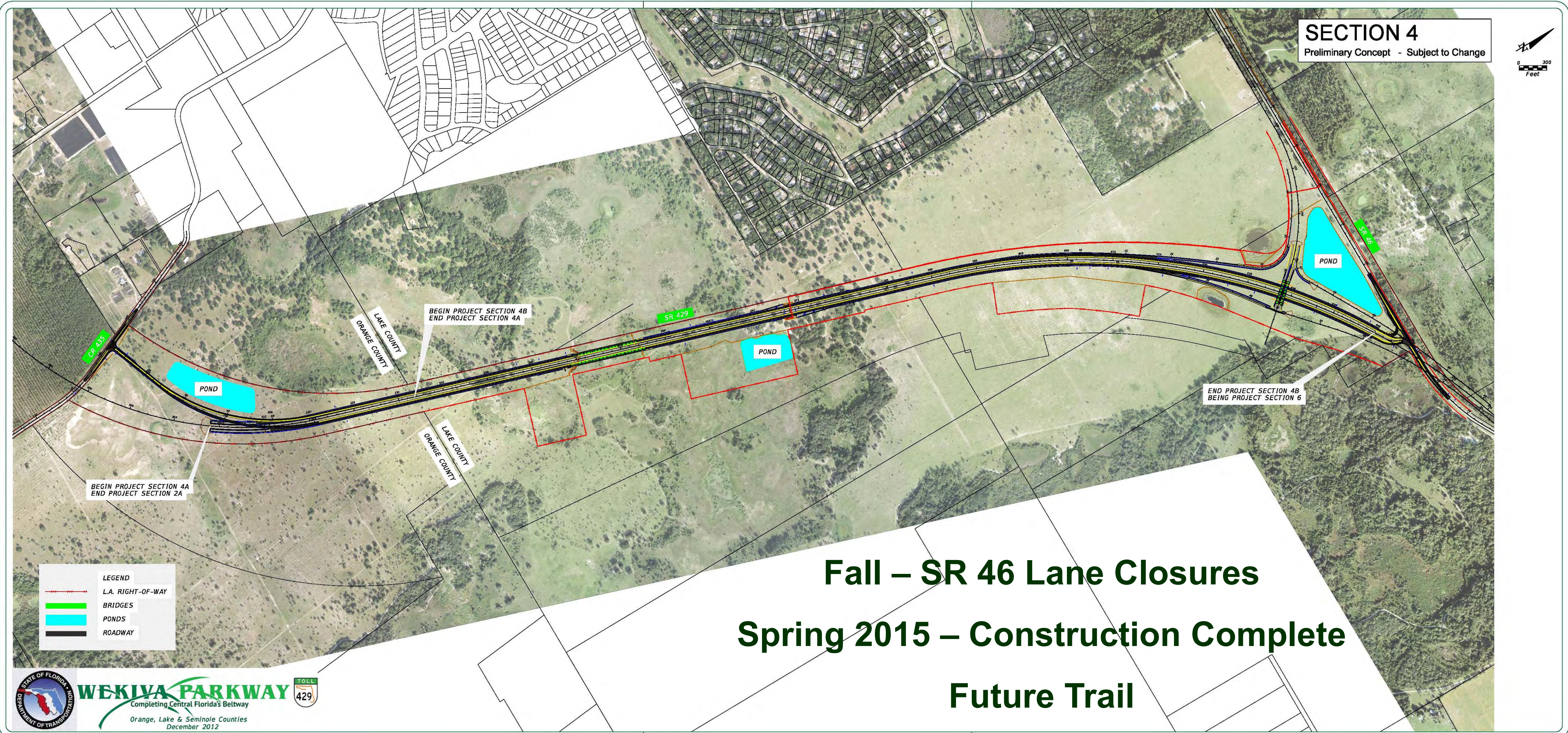




# Section 3B



# Section 4A & 4B



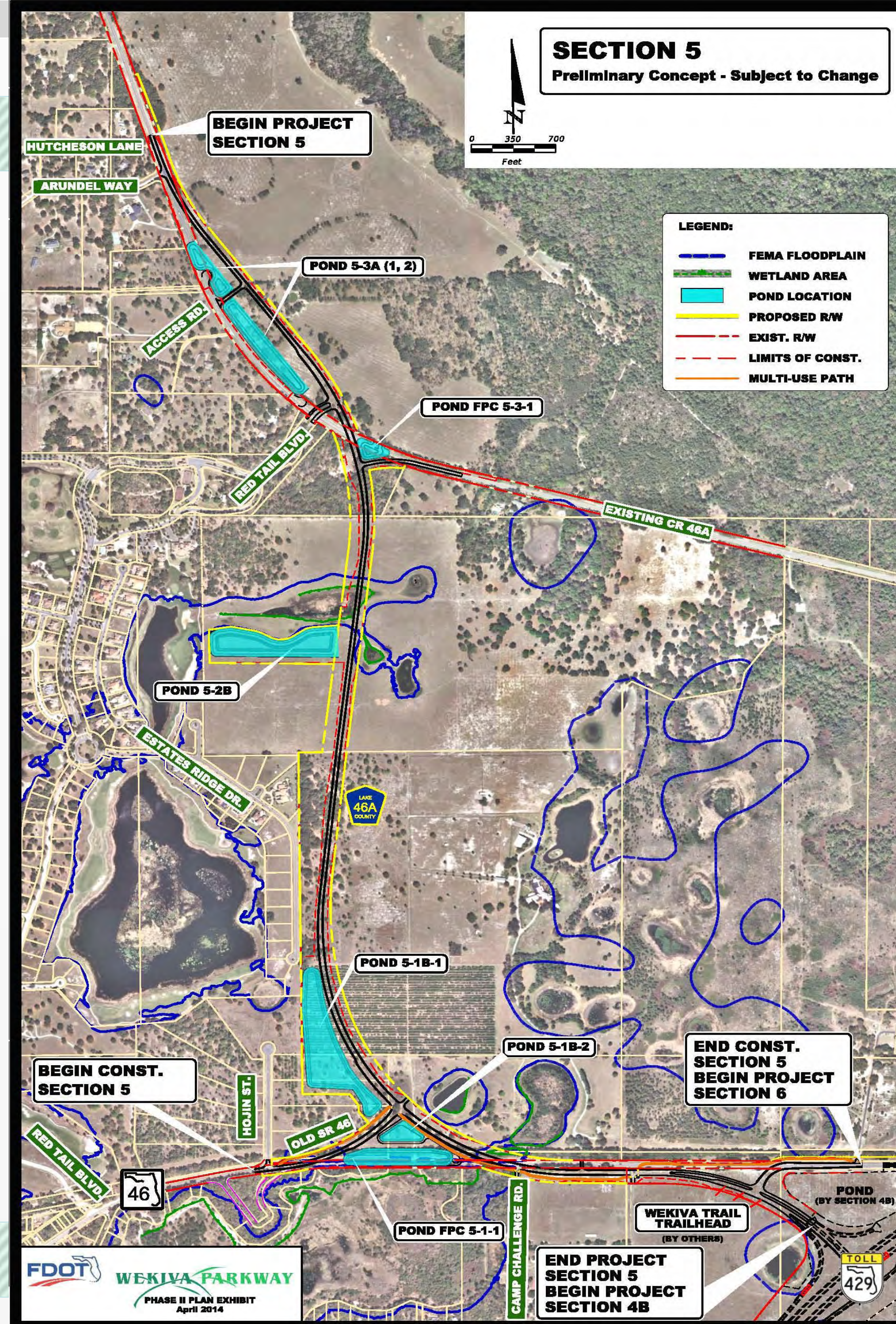
# Section 4A & 4B



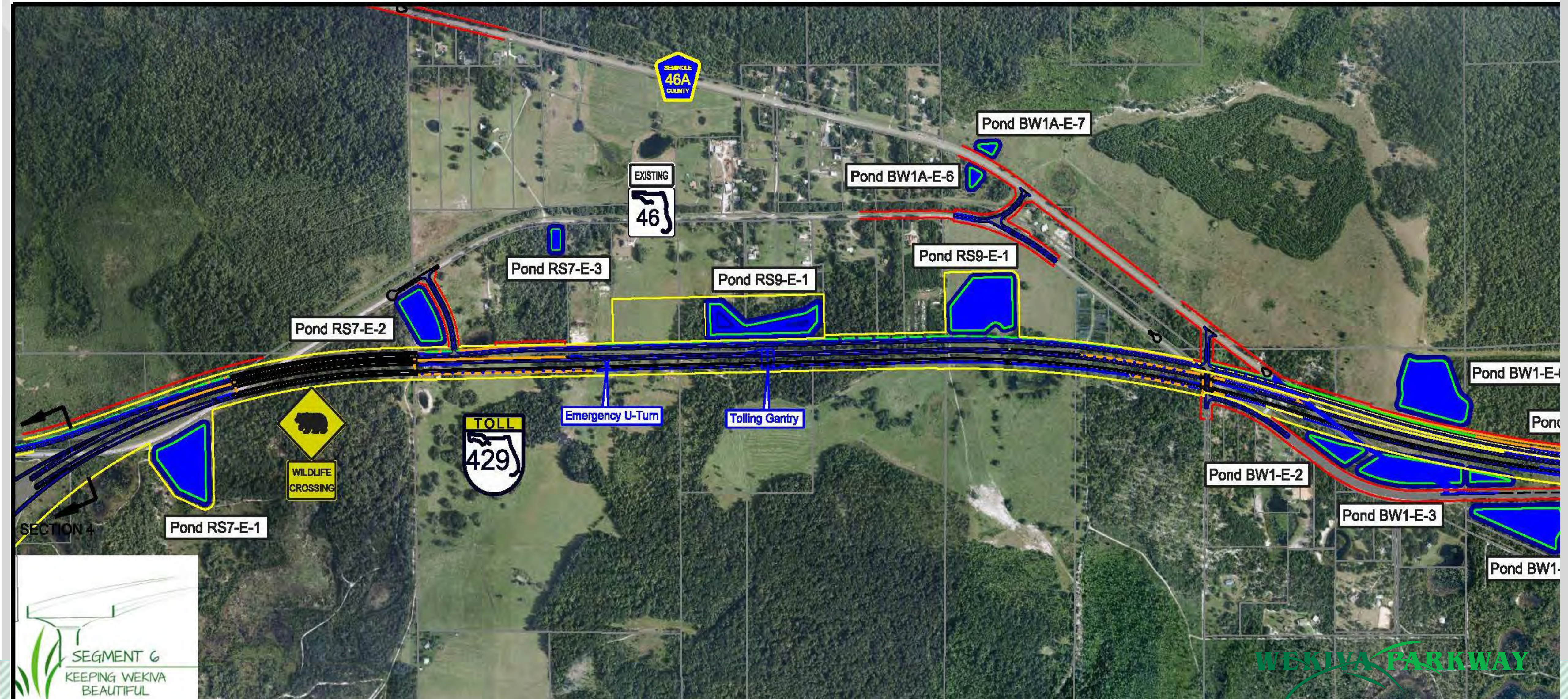
# Section 5

Nov. 2014 - 90% Design Complete

2017 - Construction Start

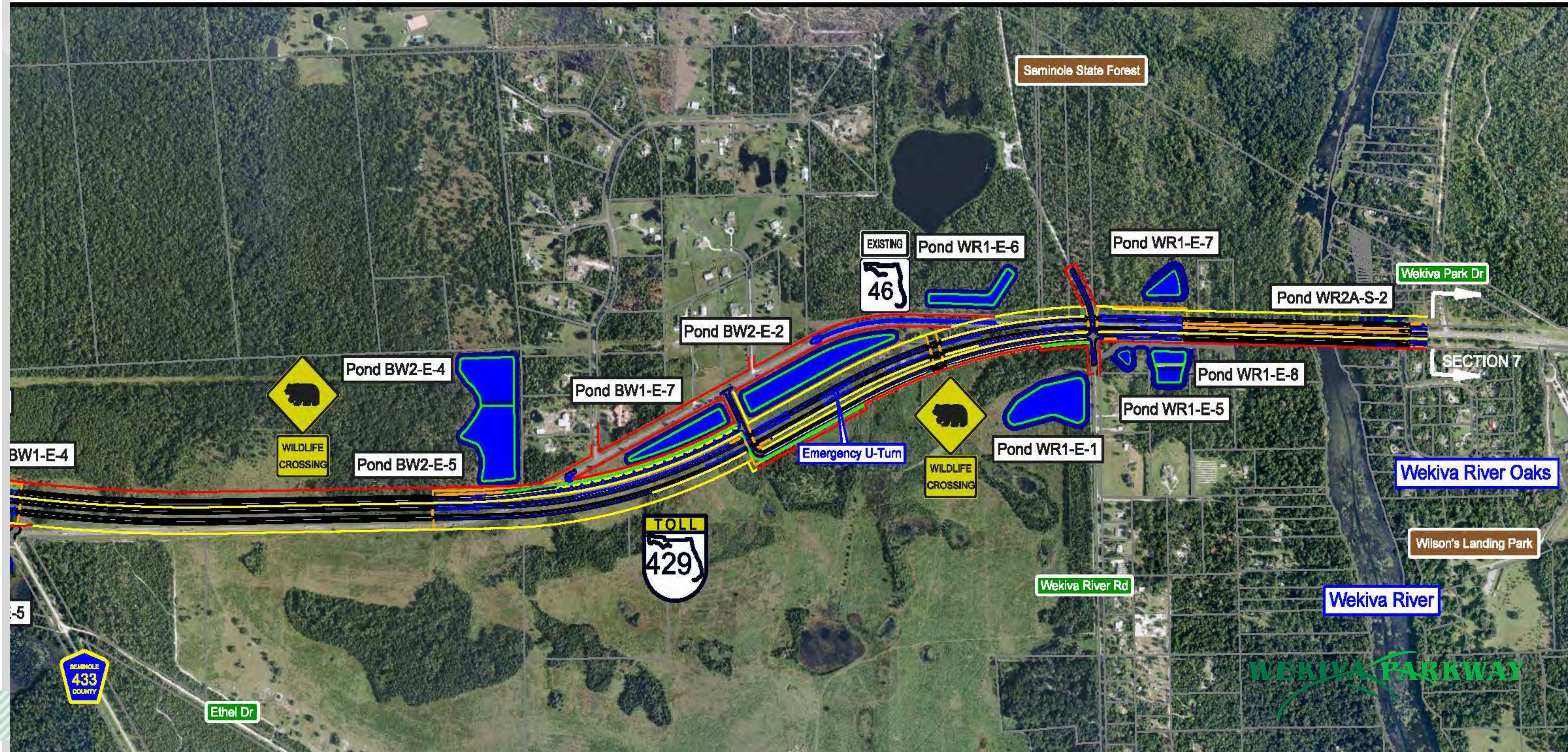


# Section 6 - West



SEGMENT 6  
KEEPING WEKIVA  
BEAUTIFUL

# Section 6 - East

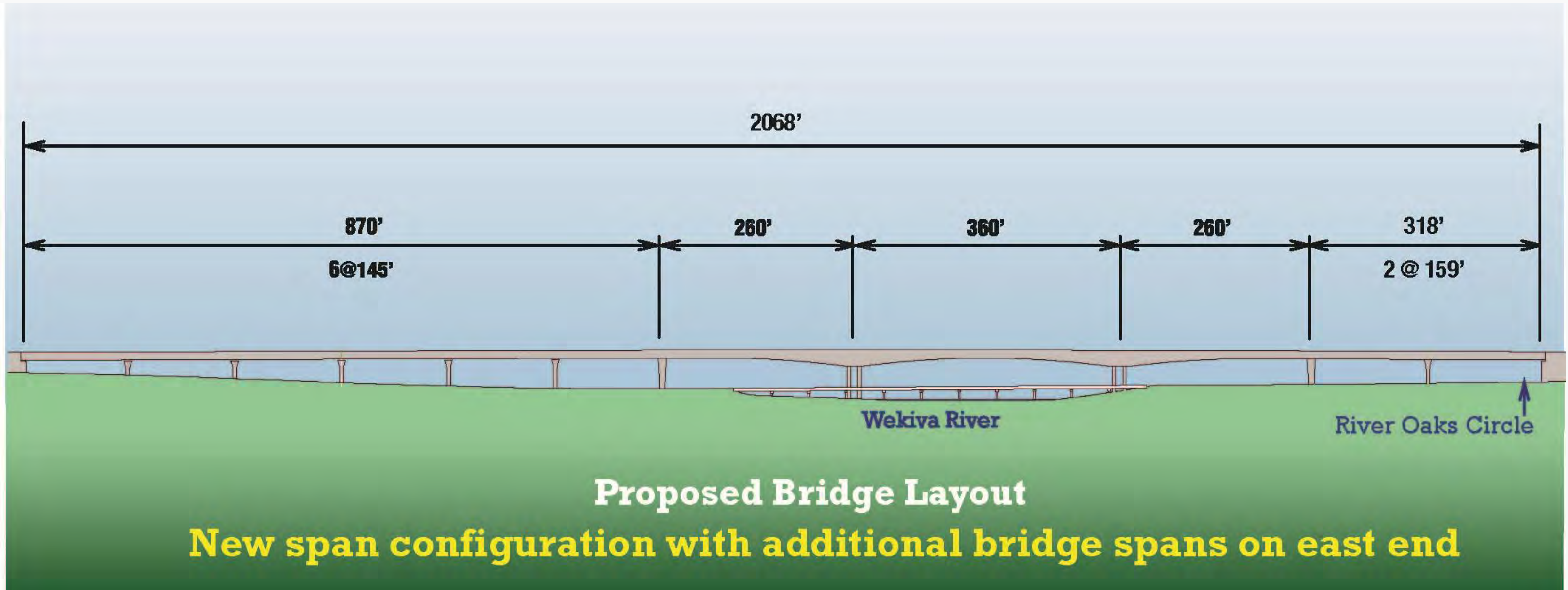




# Wekiva River Bridge - Profile



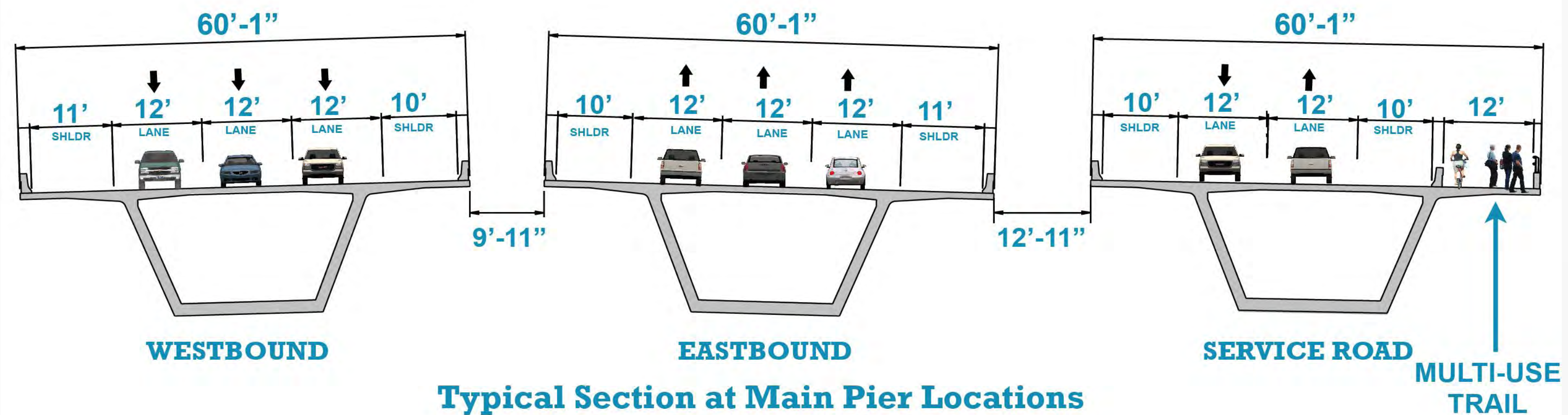
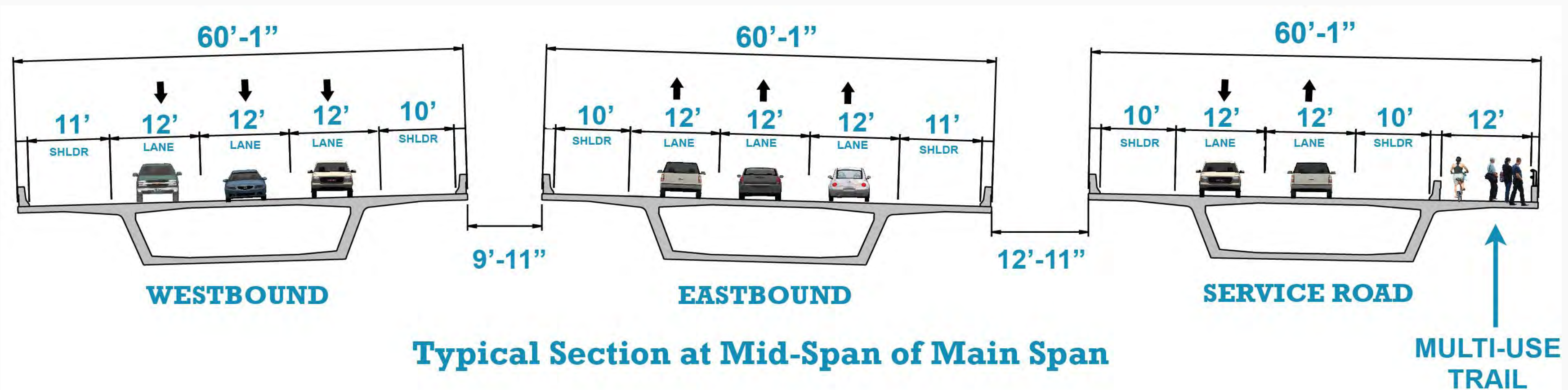
# Wekiva River Bridge - Layout



# Wekiva River Bridges – River User's View



# Wekiva River Bridge - Cross Sections

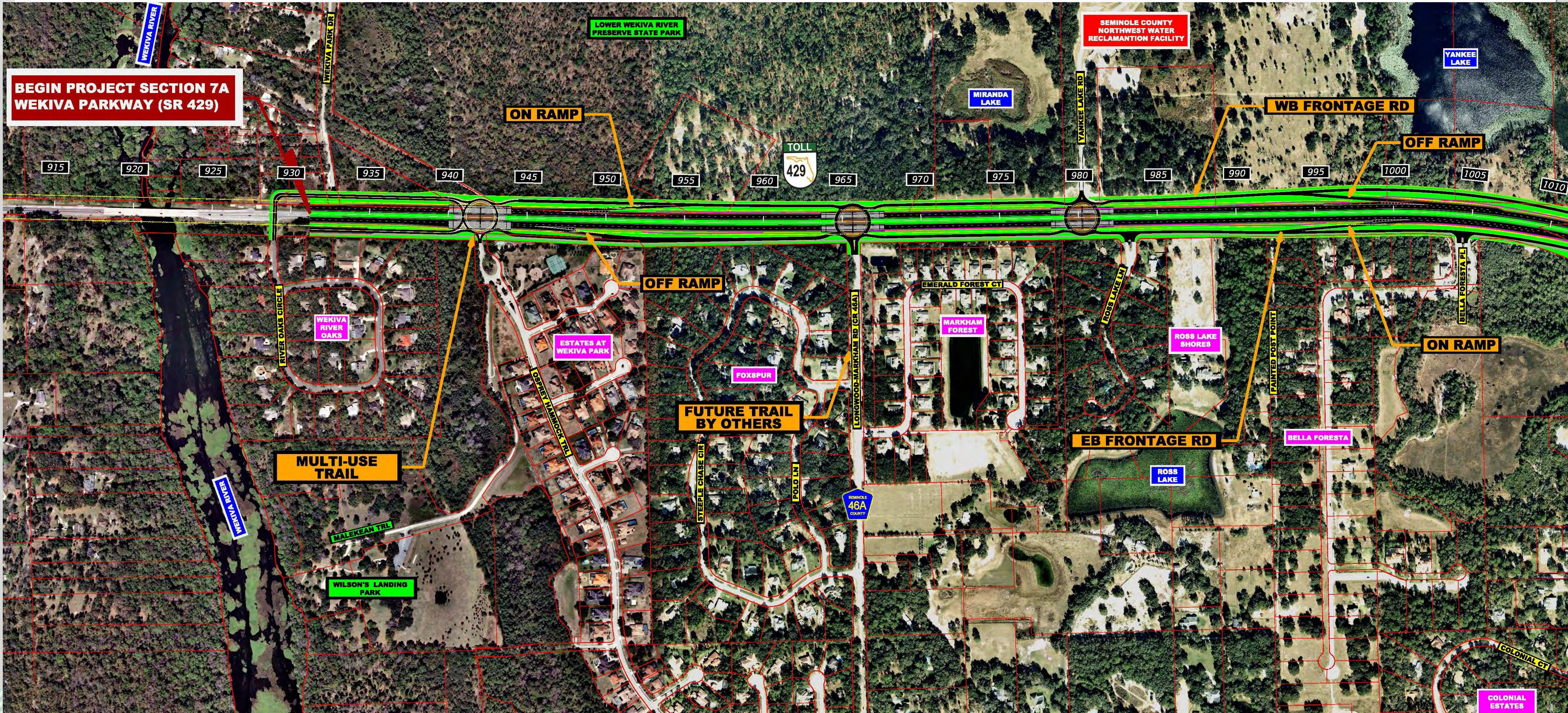


*Showing ultimate configuration.  
Parkway bridges will have 2 lanes in each direction  
for initial configuration.*

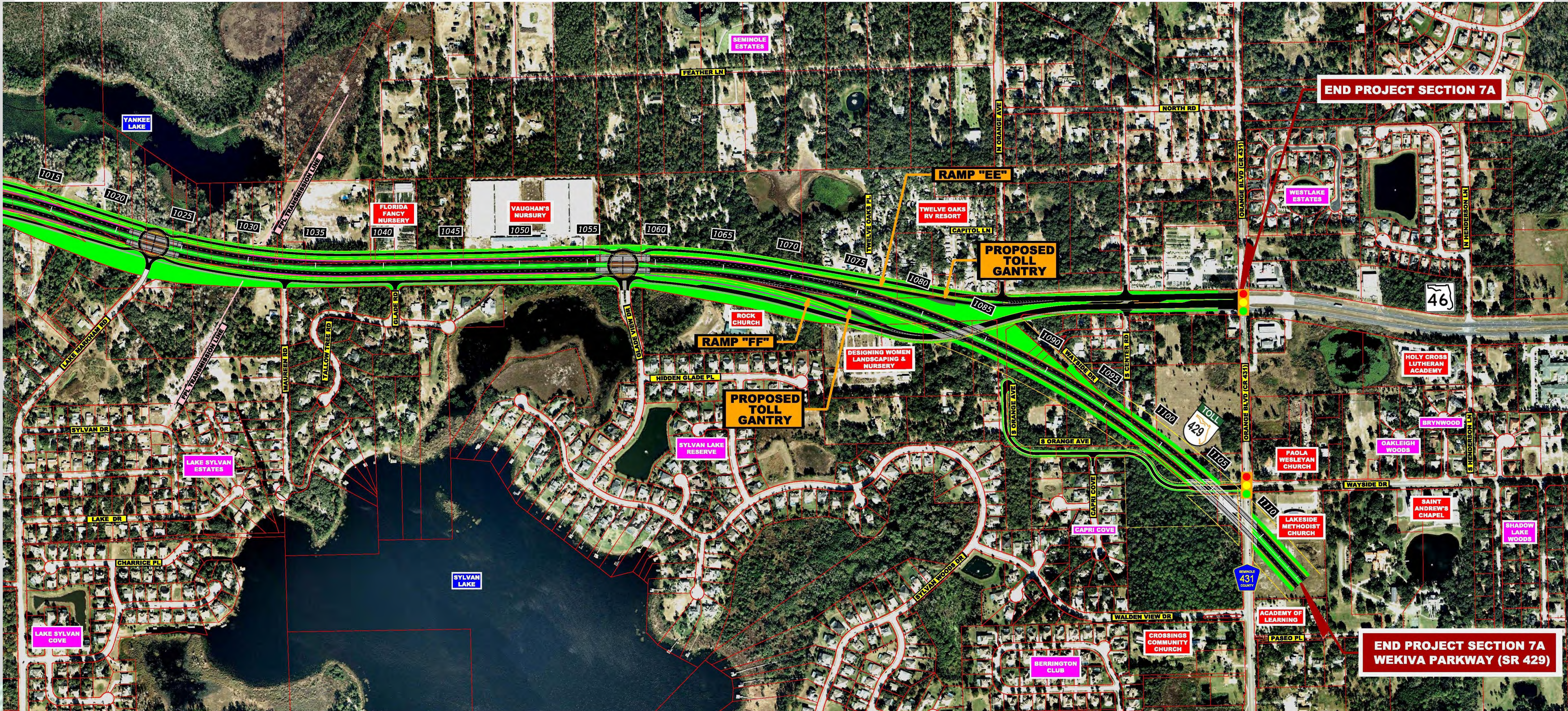
# Wekiva River – Ped Rail



# Section 7A - West



# Section 7A - East

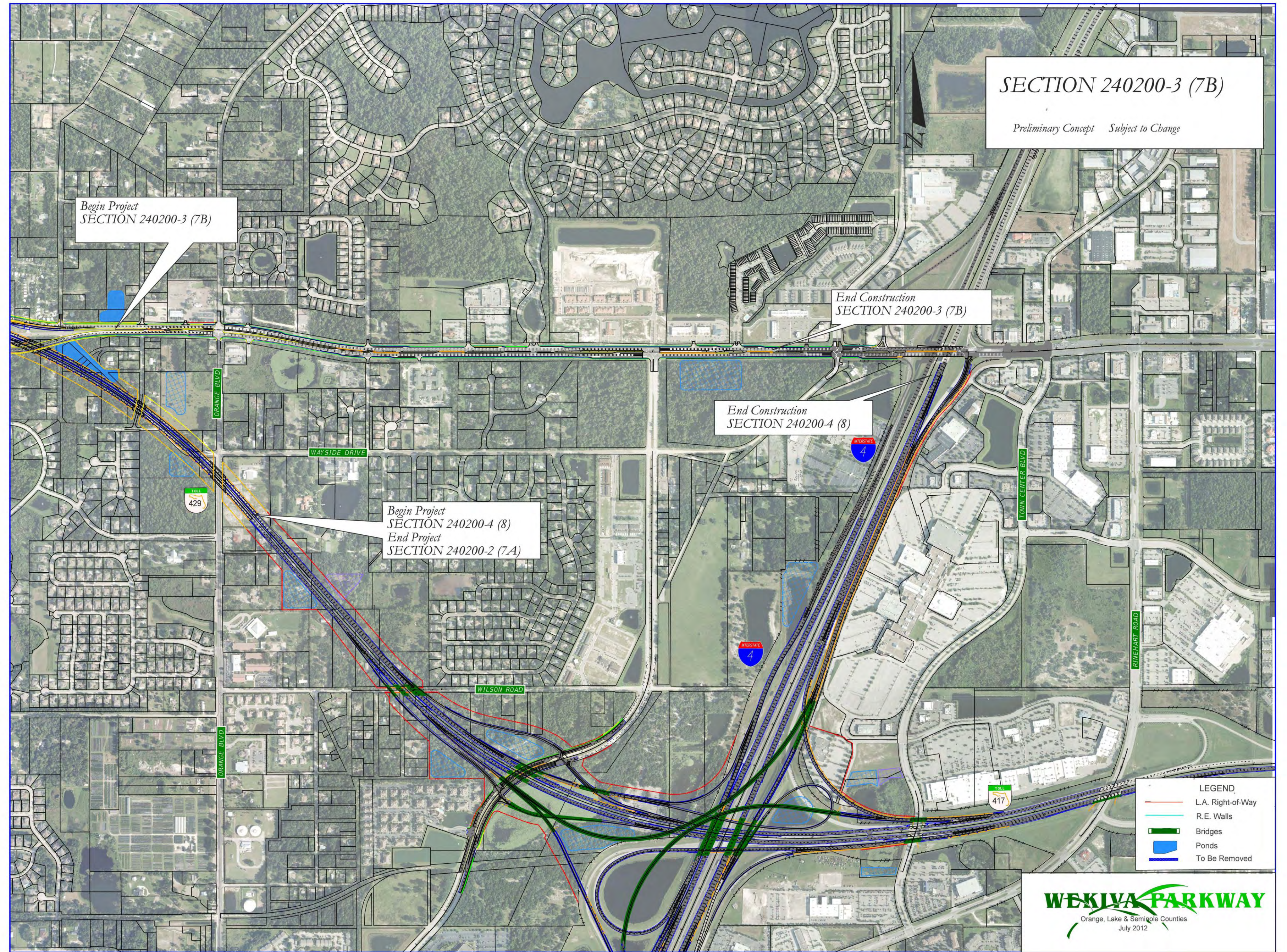


# Section 7A – Roundabout Concept





# Sections 7B & 8





# What's Next?

- **Public Meetings: Section 1A & 1B – Sept. 25, 2014**  
**Apopka H.S. Cafeteria**

**Section 7A – Early 2015**

Community Presentations

Updates & Comments via Website: [www.wekivaparkway.com](http://www.wekivaparkway.com)



- **First Section (4A & 4B) Open to Traffic – Spring 2015**
- **First CFX Sections Begin Construction – First Quarter 2015**



## For More Information:

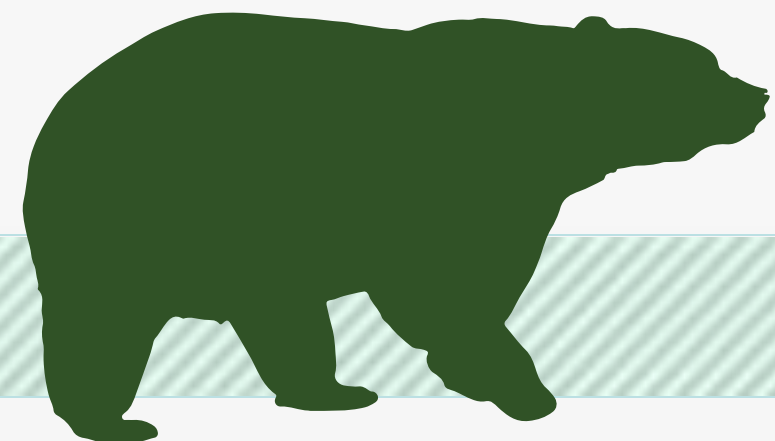
### Mary Brooks

### Public Involvement Coordinator

### C: 407-694-5505

### E: [Info@wekivaparkway.com](mailto:Info@wekivaparkway.com)

### W: [www.wekivaparkway.com](http://www.wekivaparkway.com)



The screenshot shows the Wekiva Parkway website with the following content:

- Header:** WEKIVA PARKWAY logo, "Completing Central Florida's Parkway", and navigation links: HOME, FDOT SECTIONS, CRX SECTIONS, SECTIONS BY COUNTY, PROJECT HISTORY, FAQ, CONTACT US.
- WELCOME:** A message from the Florida Department of Transportation and the Central Florida Expressway Authority (CFE) thanking visitors for their interest in the Wekiva Parkway design and construction project.
- Project Description:** The Wekiva Parkway (SR 429) will connect to SR 417, completing the beltway around northeast metropolitan Orlando. This estimated \$1.6 billion project includes \$200 million of non-toll road improvements including:
  - Widening seven (7) miles of SR 49 in Lake and Seminole Counties
  - Rebuilding the US 401/SR 49 interchange in Mount Dora
  - Shifting the CR 440 connection to SR 49 so wildlife can move more safely between habitats
- Map:** A satellite map of the project area with colored overlays for different sections. A legend indicates "FUTURE SECTION" in green and "DOT SECTIONS" in purple.
- Latest News:** A list of recent events including public meetings and commission updates from June 2014 to April 2014.
- Project Documents, Presentations, and Press Releases:** Links to various project-related resources.
- Contact Us:** Information for Mary Brooks, Public Information Officer, including email and phone number.
- Helpful Links:** Links to the Central Florida Expressway Authority, Florida Department of Transportation, and other related organizations.
- Follow Us:** Social media icons for Facebook and Twitter.
- Footer:** Copyright 2014, all rights reserved. Includes a disclaimer about public participation and website accessibility.



# WEKIWA PARKWAY

Completing Central Florida's Beltway



**Thank You!**

**Questions?**

