



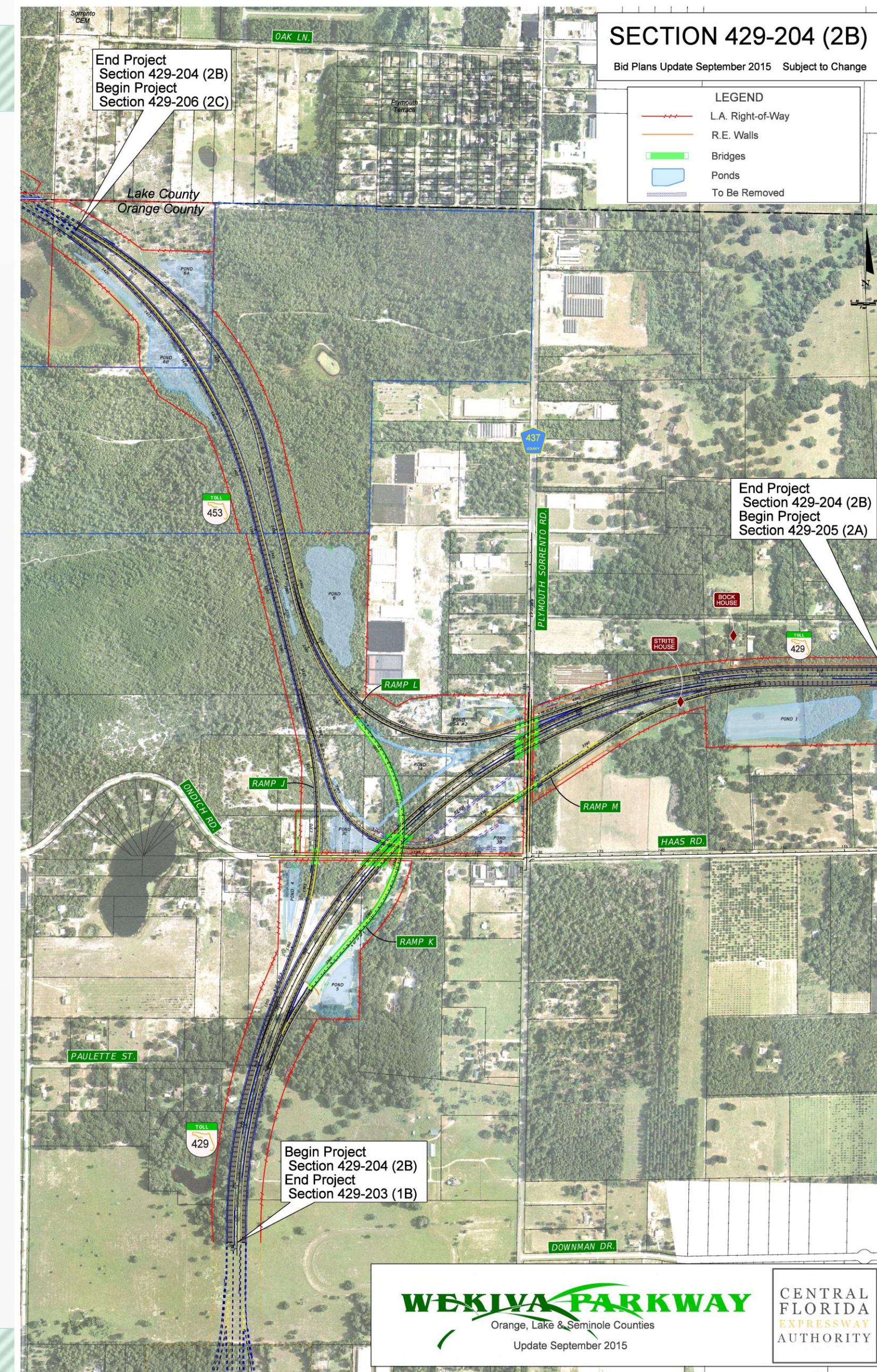
A Regional Transportation Solution

**CFX Section 2B
Construction Aerial Photos
April 2016**

**CENTRAL
FLORIDA
EXPRESSWAY
AUTHORITY**

Section 2B

Construction Started:
January 4, 2016
Open to Traffic: Spring 2018





Earthwork and
pile driving at
Ondich Road

Plymouth Sorrento Road

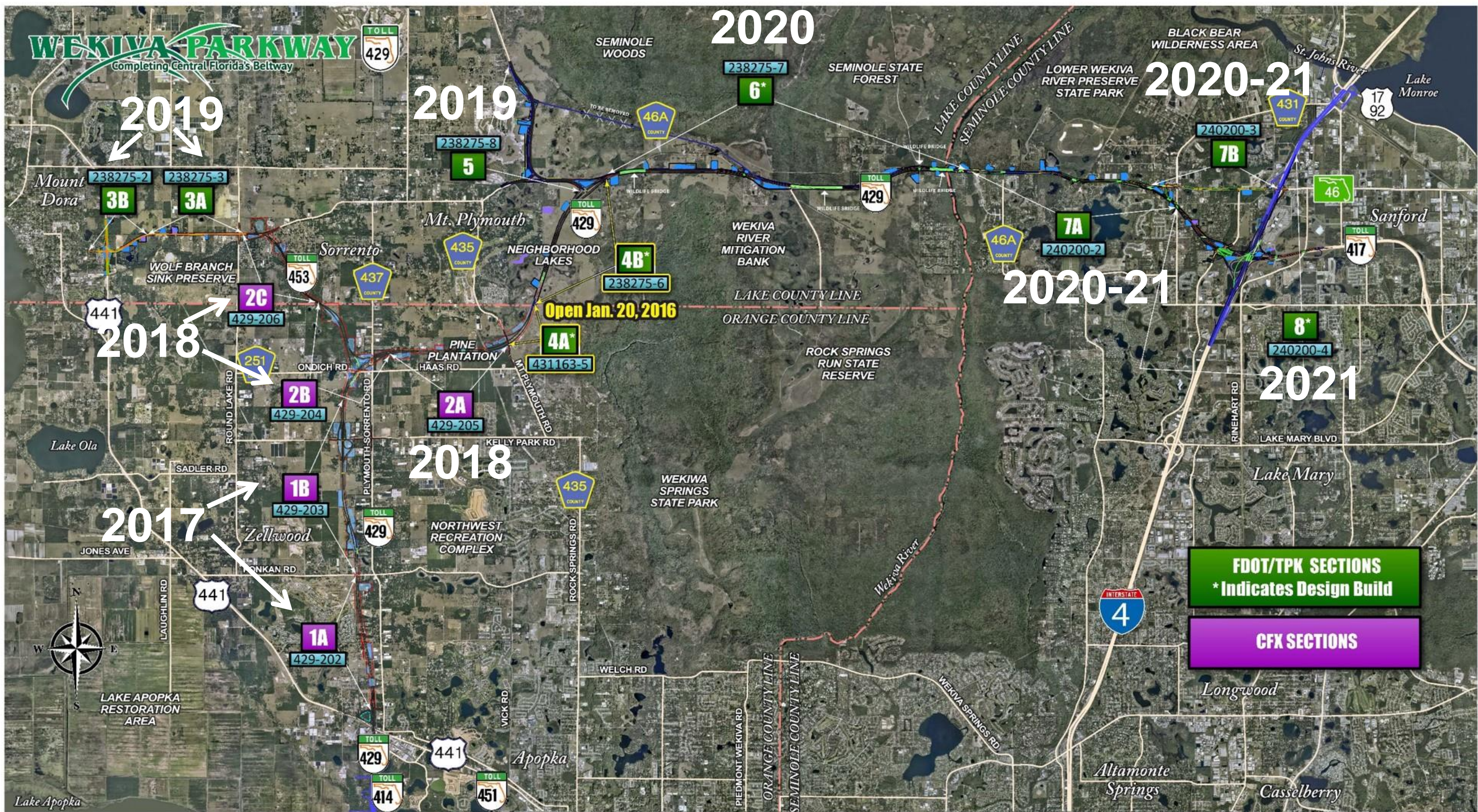


The end of Section 2B
just east of Plymouth
Sorrento Road



Section 2B heading northwest to Lake/Orange County line







For More Information:

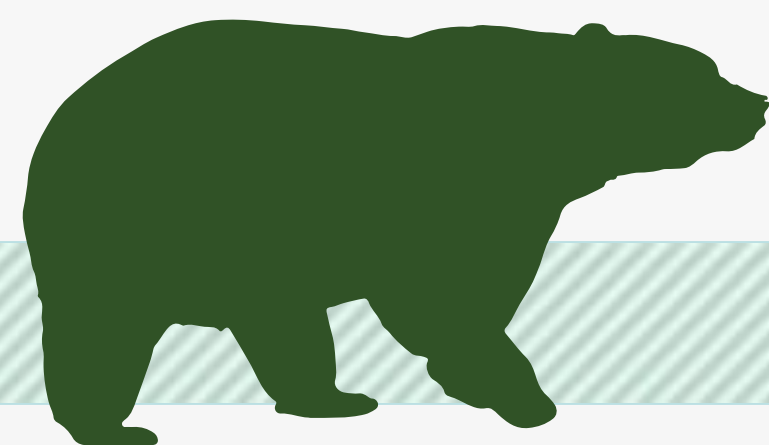
Mary Brooks

Public Involvement Coordinator

C: 407-694-5505

E: Info@wekivaparkway.com

W: www.wekivaparkway.com



WEKIVA PARKWAY
Completing Central Florida's Beltway

TOLL 429

HOME FDOT SECTIONS CFX SECTIONS SECTIONS BY COUNTY PROJECT HISTORY FAQ CONTACT US

WELCOME

On behalf of the Florida Department of Transportation and the Central Florida Expressway Authority (CFX), formerly the Orlando-Orange County Expressway Authority, thank you for your interest in the Wekiva Parkway design and construction projects. The Wekiva Parkway (State Road 429) is a cooperative effort between these agencies and the Florida's Turnpike Enterprise.

The Wekiva Parkway (SR 429) would connect to SR 417, completing the beltway around northeast metropolitan Orlando. This estimated \$1.6 billion project includes \$200 million of non-toll road improvements including:

- Widening seven (7) miles of SR 46 in Lake and Seminole Counties.
- Rebuilding the US 401/SR 46 interchange in Mount Dora.
- Shifting the SR 468 connection to SR 46 so wildlife can move more safely between habitats.

[Click here to view the overall Project Schedule.](#) Please understand schedules are subject to change due to a host of variables.

WEEKIVA PARKWAY PROJECT SECTION MAP

Click on a Section Number for Project Details.

[Click here to view larger map](#)

The 25-mile tolled expressway will provide travel alternatives and relieve US 401, SR 46 and other area roads of traffic congestion resulting from growth and travel between Orange, Lake and Seminole Counties.

Authorized in 2004 by the Wekiva Parkway and Protection Act (Chapter 206, Part II, F.S.), this expressway has been heralded as a shining example for transportation planning through an environmentally sensitive area. Development of the Wekiva Parkway has included setting aside more than 2,000 acres of land for conservation. The parkway also will include numerous wildlife bridges, and will be largely elevated to reduce accidents between vehicles and wildlife.

LATEST NEWS

Click on text for details.

June 2014
More Than 100 Attend FDOT Section 2 Public Meeting Open House

June 2014
Wekiva Parkway PD&E Study Wins 2014 Engineering Excellence Award

June 2014
Seminole County Commissioners Receive Update on Wekiva Parkway

May 2014
Check Out the Latest Section 41 & 45 Construction Photos

April 2014
More Than 200 Attend FDOT Public Meeting on Sections 2 & 6

PUBLIC MEETING - 100-Plus Attend FDOT Section 2 Meeting

PROJECT DOCUMENTS

PRESENTATIONS

PRESS RELEASES

CONTACT US

Mary Brooks
Public Information Officer
Info@wekivaparkway.com
407-694-5505

HELPFUL LINKS

Central Florida Expressway Authority
Florida Department of Transportation
Florida's 511
SunRail
I-4 Project
FDOT Central Florida Project
Florida's Turnpike Enterprise

FOLLOW US

Facebook
Twitter

Copyright 2012. All rights reserved. Home | FDOT Sections | CFX Sections | Sections by County | Project History | FAQ | Contact Us
Public participation is solicited without regard to race, color, national origin, age, sex, religion, disability or family status.

twitter

facebook